

Expertise

Protocol number: 45593435
Order No. / Reference: 26122010
Inspection date: 20 May 2026

Manufacturer: Skoda

Model: Kodiaq 2.0 TSI 4x4 DSG Sportline

VIN: TMBLE9NSXM8047556



Vehicle details

Manufacturer / Type / Model / Equipment

Skoda Kodiaq 2.0 TSI 4x4 DSG Sportline

Vehicle Identification number TMBLE9NSXM8047556

Mileage (Read) 178,988 km

First registration 15 Apr 2021

Number of holders 1

Power / Engine displacement 140 kw / 1,984 ccm

Fuel type / Cylinder Petrol / 4

Gearbox / Number of gears Automatic / 7

Type of drive All-wheel drive

Type of vehicle SUV

Colour / colour code Black Magic Pearlescent (F9R)

Doors / Seats 5 / 5

Upholstery type Alcantara / Leather

Colour of upholstery Black-Anthracite



Vehicle details

Maintenance booklet / proof	digital proof / complete	Next maintenance in	26,300 km
Last service on / at	02/2026 at 178,571 km		
Key is / should be	3 / 3	FZG documents	ZB#2 (B) was available (copy), ZB#1 (S) was not available.
		Letter No.	GA521283
Previous damage / Accident	Detectable	Repainting	Detectable
Inspection conditions	sufficient	Lifting equipment / pit	yes
Test drive	Not performed	Engine function test	Performed
Manufacturer key number/ type code number	8004 / ATO 01444		
Emission standard	EURO6;WLTP;AP;PI/CI; M, N1 I	fine dust sticker	
Permitted total weight	2,207 kg	Empty weight	

Tyres

Mounted tyres

#	Tyre size	Type of tyre	Manufacturer	Tread depth
1)	235/55 R18 104V	Winter tyres on Light alloy	Continental	4mm / 4mm
2)	235/55 R18 104V	Winter tyres on Light alloy	Continental	6mm / 6mm

Additional tyres

#	Tyre size	Type of tyre	Manufacturer	Tread depth
1)	235/50 R19 99V	Summer tyres on Light alloy	Pirelli	3mm / 3mm
2)	235/50 R19 99V	Summer tyres on Light alloy	Pirelli	3mm / 3mm

Replacement

Typ	Tyre size	Type of tyre	Manufacturer	Tread depth
N	145/85 R18 108M	Summer tyres on Steel	Sonstige	4 mm

Legend: Tread depth information for the left tire is listed first, for the right tire it is listed second on the axle in the direction of travel.



Equipment

Standard equipment

- Storage compartment on the left wheel arch
- Storage compartments
- Airbag, driver and passenger
- Airbag, head airbags
- Allergen filter
- Anti-lock braking system (ABS)
- Electrically folding exterior mirrors including interior and exterior mirrors with automatic dimming.
- Hill start assist
- Care Connect: Proactive services (10-year term)
- Roof rails, black
- Tachometer
- Third vehicle key
- eCall
- Electronic transverse differential lock (XDS+)
- Driving light assistant and rain sensor
- Chassis: Adaptive chassis DCC including off-road assistant
- front and rear floor mats
- Front and rear footwell lighting
- Transmission: 7-speed dual-clutch transmission (DSG)
- Green tec (Start/Stop automatic including brake energy recuperation)
- Aero rear window wiper including windshield washer system
- Climatronic air conditioning (2-zone)
- Front headrests are fixed, rear headrests are height-adjustable.
- LED headlights with LED daytime running lights
- Steering wheel: Sport leather steering wheel (DSG) with multifunction buttons
- Front center armrest, including storage compartment
- Multifunction display in the instrument cluster
- Network program in the trunk
- Rear parking sensors
- Progressive steering
- Radio accessories: 8 speakers
- Radio accessories: SmartLink
- Tire Mobility Kit
- Wheels: 19" alloy wheels Triglav anthracite polished
- Heated windshield washer nozzles
- Headlights washer / wiper system
- Kodiaq seat belts
- Seats: Electrically adjustable front seats with memory function
- Speed limiter
- Bumpers painted in body color
- Telephone: Convenient hands-free telephone system including phone box
- Immobiliser
- Storage compartments behind the wheel arches in the trunk
- Airbag, driver's knee airbag
- Airbag, front side airbags
- Permanent all-wheel drive
- Traction control (ASR)
- Electrically adjustable and heated exterior mirrors with integrated side indicators
- Hydraulic brake assist
- Cargo elements in the trunk
- Carbon decorative inlay with SPORTLINE logo
- Third brake light
- Easy Start (start-stop button instead of the ignition lock)
- Electronic parking brake including auto-hold function
- ESC Electronic Stability Control
- Driving profile selection
- Electric windows front and rear
- Front radar assistant including city emergency braking function with pedestrian detection
- Cruise control
- Tinted windows
- Illuminated glove compartment
- Heated rear window
- Rear spoiler
- ISOFIX preparation on the outer rear seats
- Boot cover, roll-up and removable
- Paintwork: Special paintwork
- LED ambient lighting
- LED taillights
- Rear center armrest with cup holders and pass-through option
- MSR (Motor drag torque control)
- Fog lights with integrated LED daytime running lights
- Otto particulate filter
- Upholstery: Microfiber Sport-Black
- Radio: Bolero infotainment system
- Radio accessories: Digital radio reception DAB+
- Radio accessories: Wireless SmartLink
- Tire pressure monitoring
- Rear seat backrest split 60:40, foldable, longitudinally adjustable, backrest angle adjustable
- Electromechanical power steering
- Seats: Heated front and outer rear seats
- Seats: Driver and passenger seats are height-adjustable
- Skoda Care Connect
- 12V socket - in the center console and in the trunk
- Sunset
- Variable fastening concept in the boot (only for 5-seaters)
- Lashing eyes in the trunk
- Central locking with remote control



Extra equipment

- Swiveling trailer hitch (with electric release, including trailer stabilization)
- Digital instrument cluster (Virtual Cockpit) (with, among other functions: time, outside temperature, current fuel consumption, average fuel consumption, distance traveled, driving time, average speed, fuel range, service interval indicator, door and trunk lid warning, display of information from radio, navigation system and telephone (if available))
- Reversible boot mat
- Comfort opening for electric tailgate operation
- Package: Business Columbus (Scout, Sportline) (Columbus dynamic radio navigation system - 9.2" capacitive color display - Color multifunction display in the instrument cluster - Driver fatigue detection - Traffic sign recognition - 230 V socket and USB port (Type-C) on the back of the front center armrest - Electric tailgate operation - Luggage net partition - Infotainment Online (3-year subscription))
- Proactive occupant protection including rear side airbags
- Radio accessories: CANTON sound system (9 speakers, 1 subwoofer, digital equalizer, 575W)
- Wheels: 18" steel spare wheel, space-saving (tire 145/85 R18 incl. jack, wheel bolt wrench, load floor cover replaces tire mobility kit)
- Seats: Remote release of the rear seat backrests (2nd row) in the boot
- 360° surround view camera (area view) including reversing camera
- Traveller Plus (DSG) assistance system (Adaptive Cruise Control ACC (control range up to 210 km/h) - Lane Assist, Blind Spot Detection and Parking Assist, Exit Warning - Adaptive Lane Guidance - Park Assist - Traffic Jam and Emergency Assist - Traffic Sign Recognition)
- Kessy - keyless entry and start-stop system
- Climatronic air conditioning (3-zone) (fully automatic, separately adjustable for driver, front passenger and rear seats)
- Paint finish: Pearl effect
- Package: Family (Removable waste bin for the door panel - Sunshades for the rear side windows - Door edge protectors - Electric child safety lock adjustment)
- Package: Sleeping package (Outer headrests in the 2nd row of seats with sleeping function - sleeping blanket - Lounge Step comfort floor mats - acoustic glazing)
- Electric panoramic sunroof including sunshade (no glasses compartment in the headliner)
- Radio: Columbus infotainment system (Scout, Sportline) (Columbus dynamic radio navigation system - Capacitive 9.2" color display - Color multifunction display in the instrument cluster - Phonebox with inductive charging function (connection via external antenna) - Infotainment Online (1-year subscription))
- Auxiliary heater with remote control
- Phone: USB charging port (Type-C) on the interior mirror
- Windscreen, wirelessly heated

Brief expert findings

Documents submitted	At the time of the inspection, the vehicle registration certificate Part 2 (title) was available, but the vehicle registration certificate Part 1 (document) was not. (Copy)
VIN comparison	The vehicle identification number (VIN) was read from the vehicle and its conformity with the submitted documents was confirmed by the undersigned during the inspection.
Inspection	The inspection conditions were sufficient for the assessment of the vehicle. Lifting equipment and/or a pit were available for examining the vehicle.
Test drive	No test drive/shunting maneuver was carried out during the inspection of the vehicle.
Engine function test	An engine test run was performed.



Value reducing factors

No.	Component group	Description
1	Trim / covers	Floor mats - Broken / torn - Replace
2	Equipment	Vehicle key (Batterie) - Empty - Replace
3	Side panel - rear left side	Side panel - dent(s) - Smooth repair work
4	Door - rear right side	Door - dent(s) - Smooth repair work
5	Body	B-pillar - right side - Scratch(es) - Smart repair
6	Door - front right side	Door - Scratch(es) - Smart repair
7	Interior	Interior (Undefinierbar) - Odour - Ozone treatment
8	Rear bumper	Rear bumper - Scratch(es) - Smart repair
9	Trim / covers	Floor covering - front left side - Broken / torn - Smart repair
10	2nd wheel set	1 tyre (Flanke) - Scratched - Replace
11	Front bumper	Front bumper (+verkratzt inkl. Spoiler) - Stone chips - Paint

Wear and tear

No.	Component group	Description
1	Misc.	Main inspection - No evidence - No deduction
2	Boot lid / rear door	Boot lid - Scratch(es) - No deduction

The vehicle shows signs of wear and tear commensurate with its age and use.

Missing parts

Description

Interior - Boot cover / roller cover

Previous damages

No.	Previous damage	Extent of damage (Net)
1	Rear, Side right, Provided by user / customer, from 19 Jul 2023	712,11 €
2	Rear, Provided by user / customer, from 15 Oct 2025	816,15 €
3	Side right, Provided by user / customer, from 11 Sept 2025	863,46 €
4	Rear, Provided by user / customer, from 11 Sept 2025	1.067,04 €
5	Side - left, Provided by user / customer, from 17 Feb 2023	2.838,71 €

Accident damages

No. Accident

1 Side - left

Repainting

No. Repainting

- 1 Boot lid / rear door, Professionally carried out, Invoice of repair done Non-existent
- 2 Side panel - rear left side, Professionally carried out, Invoice of repair done Non-existent
- 3 Door - rear left side, Professionally carried out, Invoice of repair done Non-existent

Paint coat thickness measurement

Boot lid / rear door	159 µm	Side panel - rear left side	287 µm
Door - rear left side	251 µm		



Order/Scope of Order

An order was placed to prepare a sales report for the described vehicle. This report includes the following:

- Description of key vehicle information
- Documentation of equipment features
(Delivery by third-party service providers)
- Documentation of damage, defects, missing parts
- Documentation of prior damage, unrepaired prior damage, repainting
- A brief visual or functional inspection of the equipment details, if possible.
(Functional testing of driver assistance systems is not included in the scope of services!)
- a photographic documentation of the vehicle

Basis for the order

This product is based on the guidelines for vehicle returns and valuations published by Alphabet Fleet GmbH. The expert makes the specific findings in each individual case objectively, within the framework of the prescribed standards, based on their own expertise.

The vehicle inspection takes place in a fully assembled, unassembled state.

Damage or defects that can only be detected during disassembly/diagnostic work or through further investigation remain within the realm of prognostic risk. An increased risk exists due to concealed defects caused by fraudulent misrepresentation and which were not identifiable by the expert.

Damage or defects resulting from normal use or wear and tear of the vehicle will be accepted in accordance with the applicable standard.

There was no explicit identification or monetary consideration of the expected features within the product.

Features which, in their nature and extent, slightly exceed normal use but do not constitute unacceptable damage, will be documented and indicated as signs of wear, if applicable.

Damage or defects that, according to the applicable standard, can no longer be attributed to normal use or wear and tear are listed under "Value Reducing Factors" in the product description.

Depending on the product specification, a monetary ID can be provided. If this takes place, the costs can be 100% or pro rata depending on the vehicle's age and mileage.

Previous damages

Non-repaired previous damages were found at the vehicle. The necessary repair costs are listed in the expert report or if necessary, are listed in detail in a separately enclosed repair cost calculation.

Comments

Die beigefügte Reparaturkostenkalkulation wurde nach bestem Wissen und Gewissen unter eingeschränkter Besichtigungsbedingung im demontagefreien Zustand erstellt. Es können aufgrund verdeckter Beschädigung erhebliche Mehrkosten und somit Abweichung der für den Unfall ausgewiesenen Reparaturkosten nicht ausgeschlossen werden.



Figure 1: Diagonal front (left)



Figure 2: Diagonal front (right)



Figure 3: Diagonal rear (left)



Figure 4: Diagonal rear (right)



Figure 5: Interior - front



Figure 6: Interior - rear



Figure 7: Instrument cluster



Figure 8: Instrument panel



Figure 9: Interior 360° view



Figure 10: Cargo area



Figure 11: VIN



Figure 12: Mounted tyres



Figure 13: Documents



Figure 14: Additional tyres

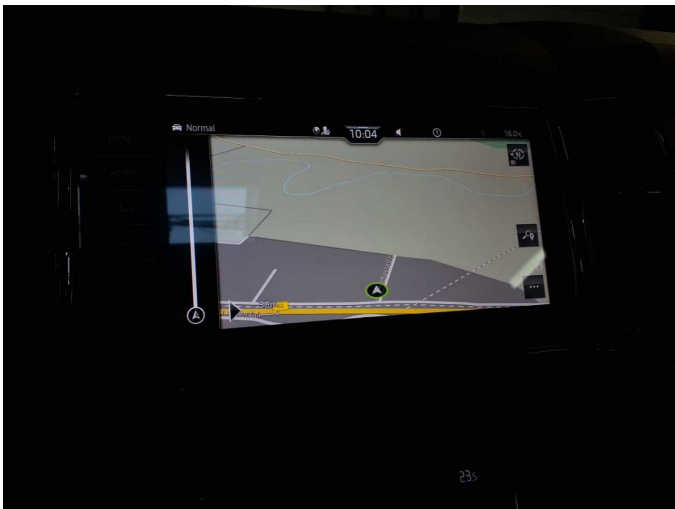


Figure 15: Navigation



Figure 16: Misc.



Figure 17: Misc.

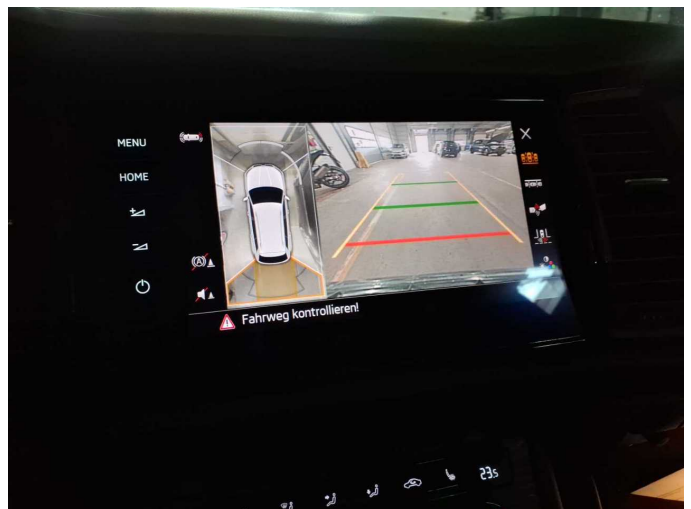


Figure 18: Misc.



Figure 19: Misc.



Figure 20: Misc.



Figure 21: Misc.



Figure 22: Misc.

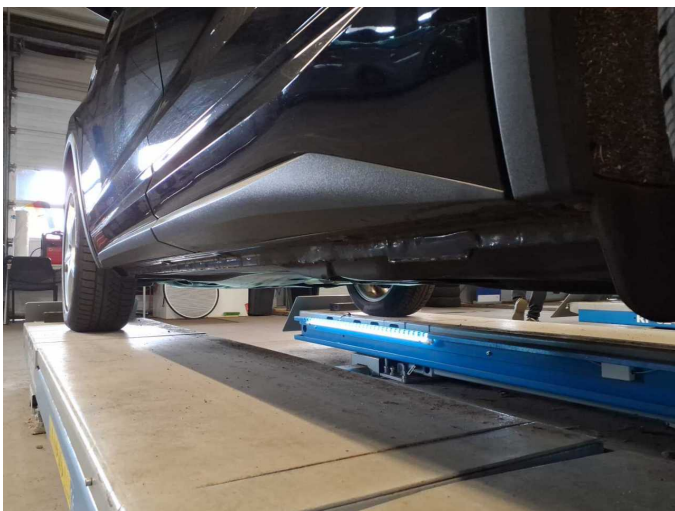


Figure 23: Misc.



Figure 24: Misc.



Figure 25: Misc.

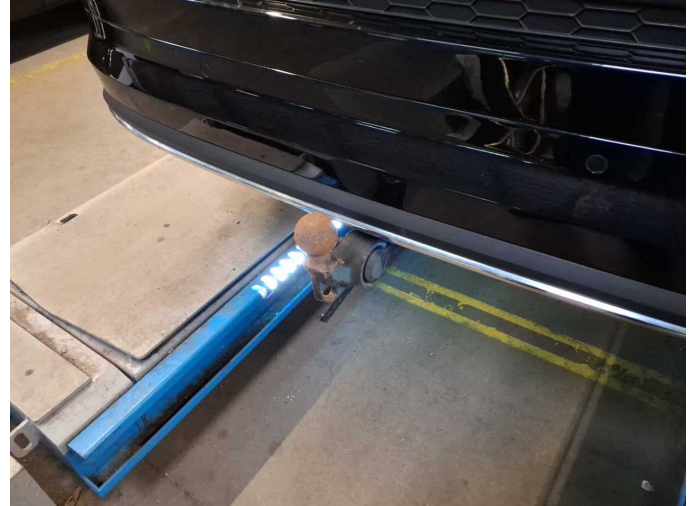


Figure 26: Misc.

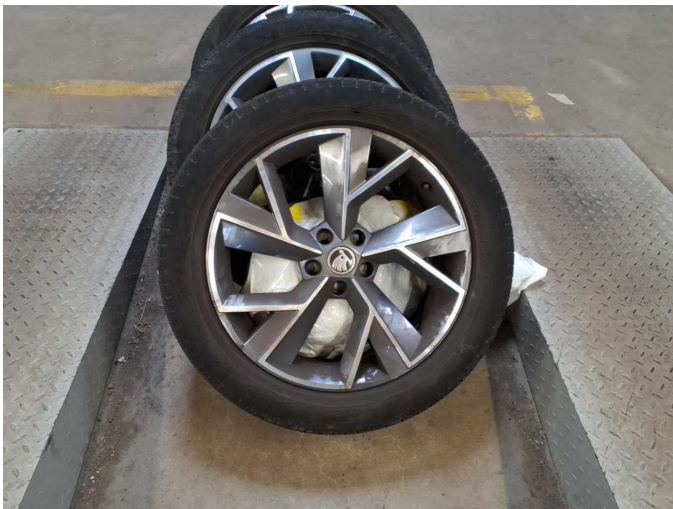


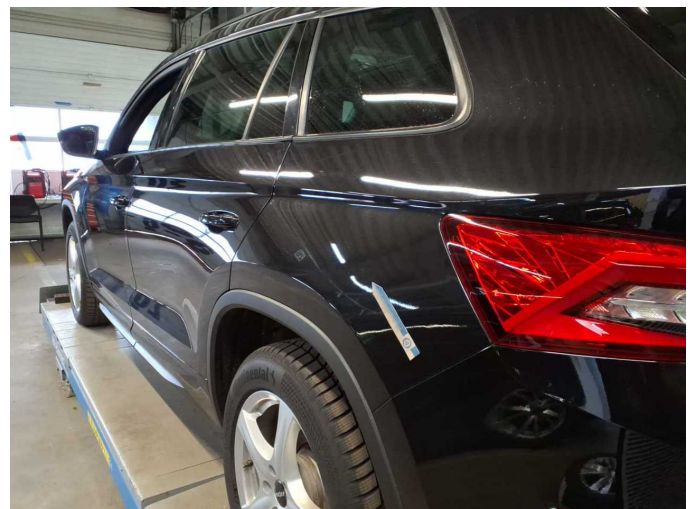
Figure 27: Misc.



Figure 28: Misc.



Damage 1: Trim / covers: Floor mats - Broken / torn - Replace



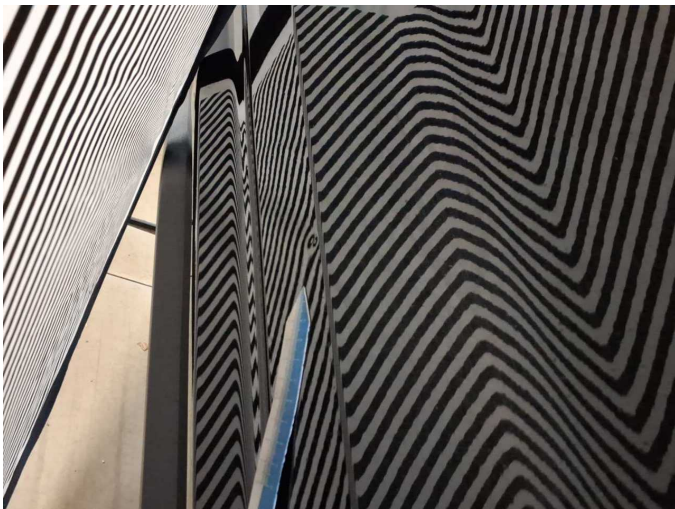
Damage 3: Side panel - rear left side: Side panel - dent(s) - Smooth repair work



Damage 3: Side panel - rear left side: Side panel - dent(s) - Smooth repair work



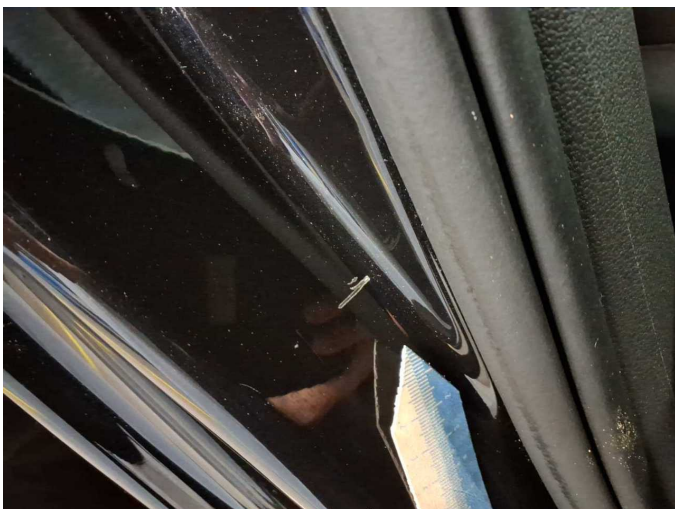
Damage 4: Door - rear right side: Door - dent(s) - Smooth repair work



Damage 4: Door - rear right side: Door - dent(s) - Smooth repair work



Damage 5: Body: B-pillar - right side - Scratch(es) - Smart repair



Damage 5: Body: B-pillar - right side - Scratch(es) - Smart repair



Damage 6: Door - front right side: Door - Scratch(es) - Smart repair



Damage 6: Door - front right side: Door - Scratch(es) - Smart repair



Damage 8: Rear bumper: Rear bumper - Scratch(es) - Smart repair



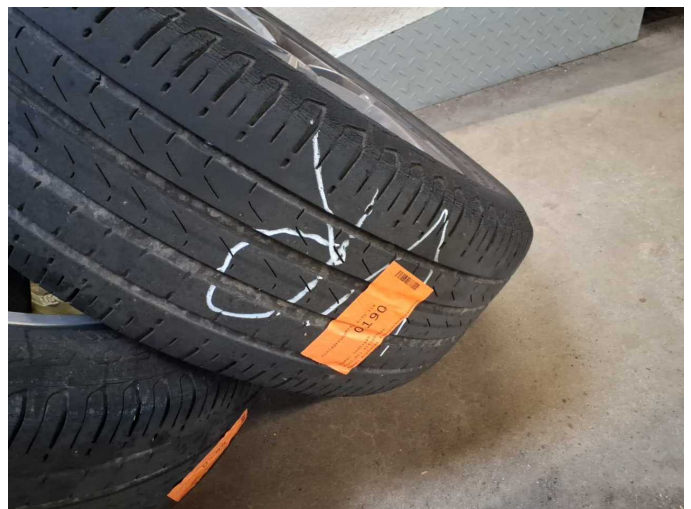
Damage 8: Rear bumper: Rear bumper - Scratch(es) - Smart repair



Damage 9: Trim / covers: Floor covering - front left side - Broken / torn - Smart repair



Damage 9: Trim / covers: Floor covering - front left side - Broken / torn - Smart repair



Damage 10: 2nd wheel set: 1 tyre (Flanke) - Scratched - Replace



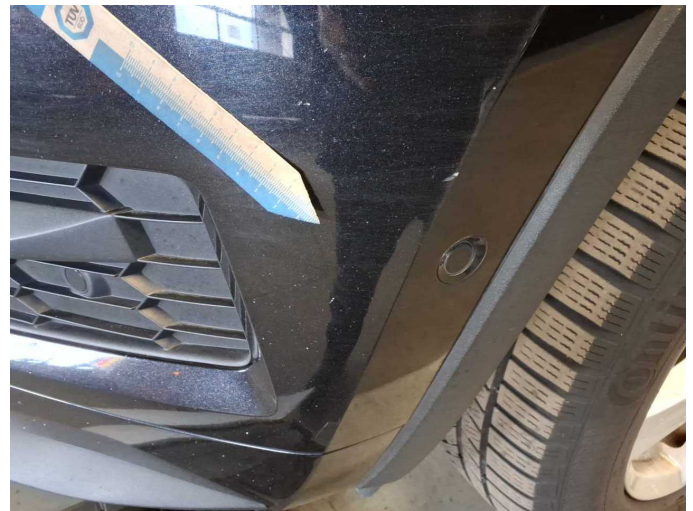
Damage 10: 2nd wheel set: 1 tyre (Flanke) - Scratched - Replace



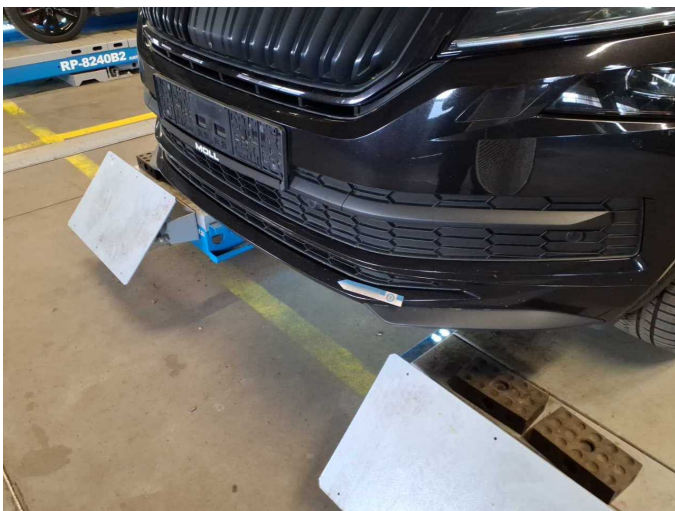
Damage 10: 2nd wheel set: 1 tyre (Flanke) - Scratched - Replace



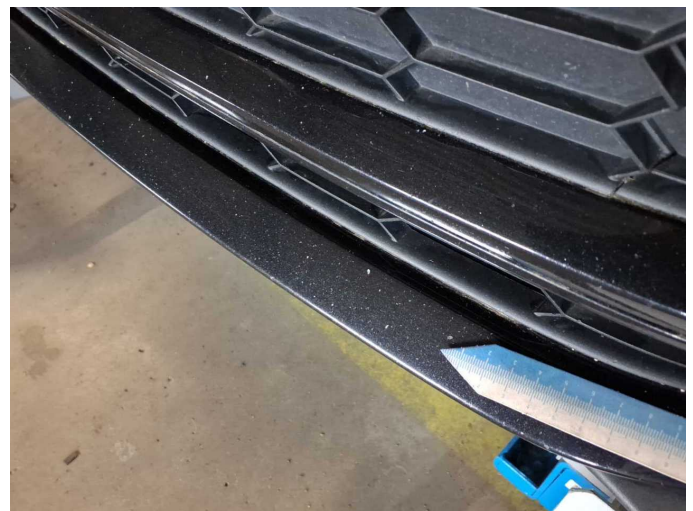
Damage 11: Front bumper: Front bumper (+verkratzt inkl. Spoiler) - Stone chips - Paint



Damage 11: Front bumper: Front bumper (+verkratzt inkl. Spoiler) - Stone chips - Paint



Damage 11: Front bumper: Front bumper (+verkratzt inkl. Spoiler) - Stone chips - Paint



Damage 11: Front bumper: Front bumper (+verkratzt inkl. Spoiler) - Stone chips - Paint



Damage 11: Front bumper: Front bumper (+verkratzt inkl. Spoiler) - Stone chips - Paint



Damage 11: Front bumper: Front bumper (+verkratzt inkl. Spoiler) - Stone chips - Paint



Damage 11: Front bumper: Front bumper (+verkratzt inkl. Spoiler) - Stone chips - Paint



Damage 11: Front bumper: Front bumper (+verkratzt inkl. Spoiler) - Stone chips - Paint



Accident 1: Side - left



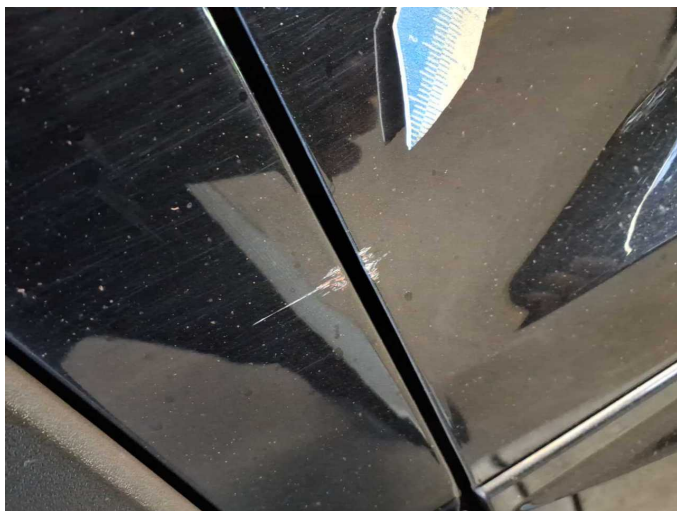
Accident 1: Side - left



Accident 1: Side - left



Accident 1: Side - left



Accident 1: Side - left



Accident 1: Side - left



Repainting 1: Boot lid / rear door



Repainting 2: Side panel - rear left side



Repainting 3: Door - rear left side



Wartungshistorie

(gemäß Auftraggeber Informationen)

Fahrgestellnummer: TMBLE9NSXM8047556
Hersteller / Modell: SKODA SKODA Kodiaq 2.0 TSI ACT 4x4 DSG Sportline

Datum	KM-Stand	Beschreibung
03.02.2026	178.571	Luftfiltereinsatz ern; Motoröl b. Wartung; Ölfilter ern; Regelwartungsdienst; Wartung Sonstiges; Zündkerzen ern
01.09.2025	160.719	Bremse Sonstiges; Bremsklötze vorne; Bremsscheiben vorne
28.04.2025	145.099	Bremsflüssigkeit; Bremsflüssigkeit ern; Getriebeöl ern/prüfen; Motoröl b. Wartung; Ölfilter ern; Ölwechsel - Hinterachse; Regelwartungsdienst; Reparatur Sonstiges; Wartung Sonstiges
17.10.2024	122.208	Bremse Sonstiges; Bremsklötze vorne; Bremsscheiben + Klötze v; Bremsscheiben vorne; Reparatur Sonstiges
26.09.2024	120.078	Bremse Sonstiges; Bremsklötze hinten; Bremsscheiben + Klötze h; Bremsscheiben hinten; Getriebeöl ern/prüfen; Motoröl b. Wartung; Ölfilter ern; Regelwartungsdienst; Wartung Sonstiges; Zündkerzen ern
31.05.2024	104.127	Systemtest/Eigendiagnose
27.04.2024	100.993	HU + AU
24.01.2024	91.952	Bremse Sonstiges; Bremsklötze vorne; Luftfiltereinsatz ern; Motoröl b. Wartung; Ölfilter ern; Regelwartungsdienst; Wartung Sonstiges
12.04.2023	61.925	Bremsflüssigkeit ern; Bremsscheiben + Klötze h; Ölwechsel - Hinterachse; Regelwartungsdienst; Systemtest/Eigendiagnose; Zündkerzen ern
25.01.2023	55.189	Motoröl b. Wartung; Ölwechsel
29.09.2022	44.630	Bremsklötze vorne
25.05.2022	33.177	Regelwartungsdienst
14.03.2022	26.559	Motoröl b. Wartung; Ölwechsel