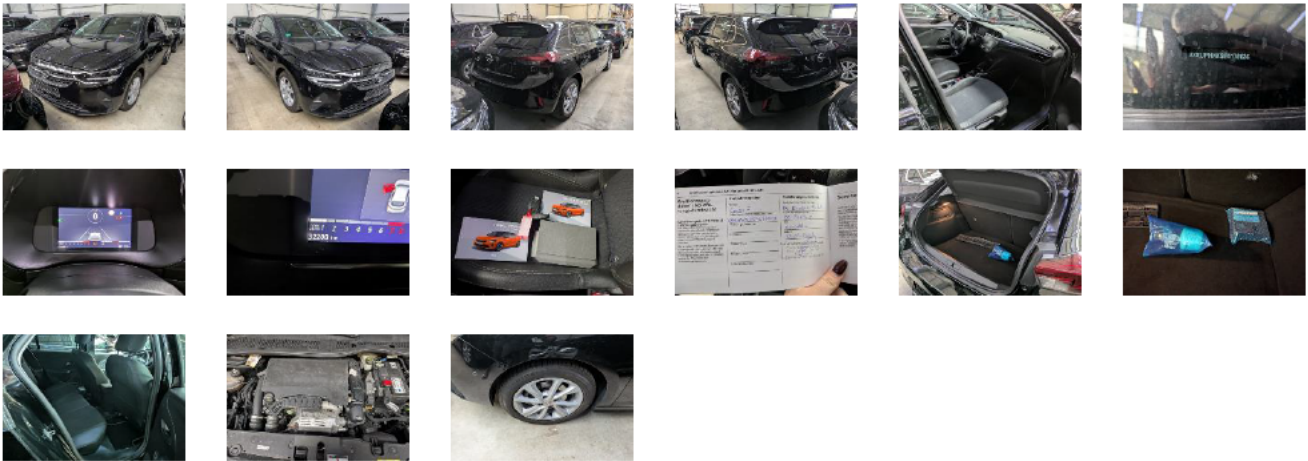


Vehicle details

VIN	VXKUPHNKS P4170036	Registration date	23/08/2023	Exterior Color	Unknown
Brand	OPEL	Licence Plate		Odometer	
Model	CORSA 1.2 Direct Inj Turbo 74kW Elegance				

Inspection Details

Arrival Date	17/03/2026	Inspection ID	6893957	Inspection date	16/04/2026
Assign Date	17/03/2026	Fleet owner		Inspection loc.	



Generic equipment

--

Removable element

Radio user manual	✓
-------------------	---

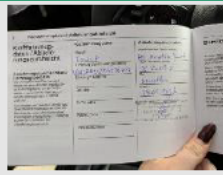
Technical Document

User manual	✓
Log books	✓
Spare key	✓
Key	✓
Warranty booklet	✗
Service	✗

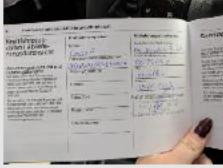




Tyres

195/55/16 V All seasons 5.0 mm Goodride		195/55/16 V All seasons 5.0 mm Goodride	
195/55/16 V All seasons 5.0 mm Goodride		195/55/16 V All seasons 5.0 mm Goodride	

Exception / Damage

1		Part	Warranty booklet	Repair Time	-	Part Cost	20.00€	
		Position		Repair Cost	-	Gross Cost	20.00€	
		Damages	Missing	Paint Time	-	Depreciation %	-	
		Severity		Paint cost	-	Depreciation	-	
		Repair mode	Replace	Flat Rate	-	Net Cost	20.00€	
		verkehrte fin im serviceheft						

DEKRA Automotive Solutions

2		Part	Service	Repair Time	-	Part Cost	250.00€
		Position	-	Repair Cost	-	Gross Cost	250.00€
		Damages	Missing	Paint Time	-	Depreciation %	-
		Severity	-	Paint cost	-	Depreciation	-
		Repair mode	Replace	Flat Rate	-	Net Cost	250.00€
3		Part	Service 2	Repair Time	-	Part Cost	250.00€
		Position	-	Repair Cost	-	Gross Cost	250.00€
		Damages	Missing	Paint Time	-	Depreciation %	-
		Severity	-	Paint cost	-	Depreciation	-
		Repair mode	Replace	Flat Rate	-	Net Cost	250.00€
4		Part	Bumper	Repair Time	-	Part Cost	-
		Position	Front	Repair Cost	-	Gross Cost	-
		Damages	Scratched	Paint Time	-	Depreciation %	15.00%
		Severity	-	Paint cost	-	Depreciation	-
		Repair mode	For info	Flat Rate	-	Net Cost	-
5		Part	Bonnet	Repair Time	-	Part Cost	-
		Position	Front	Repair Cost	-	Gross Cost	-
		Damages	Scratched	Paint Time	-	Depreciation %	15.00%
		Severity	-	Paint cost	-	Depreciation	-
		Repair mode	For info	Flat Rate	-	Net Cost	-
6		Part	Windscreen	Repair Time	-	Part Cost	-
		Position	Front	Repair Cost	-	Gross Cost	-
		Damages	Scratched	Paint Time	-	Depreciation %	-
		Severity	-	Paint cost	-	Depreciation	-
		Repair mode	For info	Flat Rate	-	Net Cost	-

Summary Inspection

Gross Price	520.00€	Depreciation	-	Net Price	520.00€
-------------	---------	--------------	---	-----------	---------

Labor cost summary

	Hourly Rate	Time	Gross Price	Depreciation %	Depreciation	Net Price
Bodywork	0.00€	0.00	0.00€	-	-	0.00€
Paintwork	0.00€	0.00	0.00€	-	-	0.00€
Paint preparation	0.00€	0.00	0.00€	-	-	0.00€

Miscellaneous

	Gross Price	Depreciation %	Depreciation	Net Price
Small parts / disposal charge	0.00€	-	-	0.00€
Part Cost	520.00€	-	-	520.00€
Flat Rate	-520.00€	-	-	-520.00€