

Expertise

Protocol number: 45095213
Order No. / Reference: 26253255
Inspection date: 16 Apr 2026

Manufacturer: Mercedes-Benz

Model: C 300 d T 9G-TRONIC AMG Line

VIN: W1K2062061F039223



Vehicle details

Manufacturer / Type / Model / Equipment

Mercedes-Benz C 300 d T 9G-TRONIC AMG Line

Vehicle Identification number	W1K2062061F039223
Mileage (Read)	73,382 km
First registration	14 Mar 2022
Number of holders	1
Next periodical technical inspection	04/2027
(Report on hand)	

Power / Engine displacement	195 kw / 1,993 ccm
Fuel type / Cylinder	Hybrid Diesel / E / 4
Gearbox / Number of gears	Automatic / 9
Type of drive	Rear drive
Type of vehicle	Station wagon
Colour / colour code	SCHWARZ
Doors / Seats	5 / 5
Upholstery type	Alcantara / Leather
Colour of upholstery	Black



Vehicle details

Maintenance booklet / proof	digital proof / complete	Next maintenance in	11 Tag(e)
Last service on / at	04/2025 at 56,717 km		
Key is / should be	2 / 2	FZG documents	ZB#2 (B) was available (copy), ZB#1 (S) was not available.
		Letter No.	GF772777
Previous damage / Accident	Detectable	Repainting	None detectable
Inspection conditions	sufficient	Lifting equipment / pit	yes
Test drive	Not performed	Engine function test	Performed
Manufacturer key number/ type code number	2222 / AY1 00049		
Emission standard	EURO6;WLTP;AP;PI/CI; M, N1 I	fine dust sticker	
Permitted total weight	2,400 kg	Empty weight	

Tyres

Mounted tyres

#	Tyre size	Type of tyre	Manufacturer	Tread depth
1)	225/45 R18 95H	Winter tyres on Light alloy	Goodyear	7mm / 7mm
2)	225/45 R18 95H	Winter tyres on Light alloy	Goodyear	6mm / 6mm

Additional tyres

#	Tyre size	Type of tyre	Manufacturer	Tread depth
1)	225/40 R19 93Y	Summer tyres on Light alloy	Goodyear	6mm / 6mm
2)	255/35 R19 96Y	Summer tyres on Light alloy	Goodyear	4mm / 4mm

Legend: Tread depth information for the left tire is listed first, for the right tire it is listed second on the axle in the direction of travel.



Equipment

Standard equipment

- 48.3 cm (19") AMG multi-spoke light-alloy wheels
- Airbag: Automatic passenger airbag deactivation (The system automatically deactivates the passenger airbag as soon as it detects a rear-facing child seat or registers that the passenger seat is unoccupied. A transponder in the child seat is not necessary. If it detects that an adult is taking the seat, the airbag is automatically activated, reducing the risk of incorrect operation.)
- AMG sports pedal assembly made of brushed stainless steel with rubber studs
- Basic services (breakdown management, maintenance management, accident management, telediagnosis, remote vehicle diagnostics)
- Diesel particulate filter
- DYNAMIC SELECT (consisting of driving programs: Comfort, Sport, Eco mode)
- ECO start/stop function
- Chassis: Sport chassis with sport direct steering
- Electric windows (4-way)
- Transmission: 9-speed automatic, 9G-TRONIC
- rear window wiper
- Black fabric headliner
- ISOFIX child seat attachment with top tether in the rear
- KEYLESS-GO start function
- THERMATIC automatic climate control with 1 climate zone (controlled via the central display or the climate control unit in the center console) - Sensor system for detecting, for example, interior/ exterior temperature, solar radiation, humidity and dew point - Ventilation system consisting of: 3 center vents in the center area and 2 side vents, 2 ventilation openings each in the footwell for driver and front passenger - Fine dust filter for filtering dust, soot and pollen - Dew point sensor, continuous defroster vent under the windshield and 2 fixed defroster vents)
- Steering wheel: Multifunction sports steering wheel in Nappa leather (sporty steering wheel in a 3-twin-spoke design, flattened at the bottom - finished in Nappa leather, deeply embossed in the grip area - horizontal double spokes in high-gloss black, vertical double spokes in silver chrome - shift paddles in silver chrome - control via touch panels: left: instrument cluster, cruise control and limiter or Active Distance Assist DISTRONIC; right: multimedia system (e.g., audio volume and track selection, telephony and navigation), touch sensitivity adjustment)
- Center console in high-gloss black
- Airbag for driver and front passenger
- Airbag: Center airbag (Additional airbag for increased front occupant protection in the event of a side impact)
- Airbag: Sidebag for driver and front passenger (combined thorax/ pelvis bag)
- Airbag: Windowbag for driver and front passenger
- Ambient lighting with 64 light colors
- AMG floor mats
- Left and right exterior mirrors are heated and electrically adjustable
- Brake system with larger brake discs on the front axle
- Brake assist, active
- black roof rails
- Double cup holder at the front
- EASY-PACK tailgate (with electric operation for opening and closing)
- Electronic Stability Program (ESP) (including Anti-lock Braking System (ABS) and Traction Control System (ASR))
- Speed Limit Assistant (The Speed Limit Assistant detects and displays speed limits.)
- Heated rear window
- Instrument panel and door sills in ARTICO man-made leather in black nappa look
- Mechanical child safety lock for the rear doors
- Rear headrests (3)
- Front headrests
- Paint finish: Solid
- Cargo area cover including EASY-PACK safety net
- LED High Performance headlights (The elements of the LED High Performance headlights: - Torch and trifunctional light guide for daytime running lights, position lights and turn signals - Multi-chamber reflector system with 4 individual reflectors each) for low beam and high beam. The elements of the rear lights in LED technology: - All light functions in full LED technology - Tail light - Brake light and parking light - Rear fog light (only on the left side) - Turn signals - Reversing light - 3rd brake light)
- Mercedes-Benz Emergency Call System (can provide a crucial time advantage in an emergency. A communication module with its own SIM card automatically triggers an emergency call upon detection of an accident, which can shorten the time until emergency services arrive. The emergency call can also be triggered manually to organize assistance.)
- Package: Storage (storage compartment with net on the left in the load compartment - double cup holder in the center console for 2 x 750 ml - elastic tension strap on the right in the load compartment - folding box under the load floor - 1 additional bag hook on the right in the load compartment - recess including storage tray on the right in the load compartment - map pockets on the backs of the front seats - reversible mat in the boot floor)



- Package: Interior lighting package (Illuminated glove compartment - Lighting for wireless mobile interface or mobile phone storage - Lighting for the storage compartment in the center console or the double cupholders - Lighting for the storage compartment under the center console armrest - Two vanity lights in front - Two reading lights in the overhead control unit - Two reading lights in the interior mirror in conjunction with mirror parking - Two reading lights and interior light function in the rear grab handles - Lighting for the trunk or cargo area)
- Radio: MBUX (fully digital instrument display with 26 cm (10.25") color LCD display and a resolution of 1440 x 540 pixels - Bluetooth telephony / audio - WLAN hotspot)
- Radio accessories: Digital radio (DAB)
- Radio accessory: Communication module (LTE) for using Mercedes me connect services (The communication module with a vehicle-integrated, LTE-enabled SIM card offers you added comfort and safety. It continuously connects you to your vehicle – and the vehicle to infrastructure such as the Mercedes-Benz server or the internet. This allows you to use services such as Mercedes me connect Live Traffic Information.)
- Windscreen wipers with rain sensor
- Seats: Rear seat backrests foldable
- Lane Keeping Assist, active
- Cruise control
- High-visibility vest for drivers
- Electronic immobilizer
- Central locking with remote control
- Decorative elements, metal structure

Extra equipment

- Trailer hitch with ESP trailer stabilization
- KEYLESS-GO (access and driving authorization system)
- THERMATIC automatic climate control with 2 climate zones (control via the central display or the climate control unit in the center console; sensor system for detecting, for example, indoor/outdoor temperature, sunlight, humidity, and dew point; automatic recirculation (only in conjunction with navigation system); ventilation system consisting of: 3 center vents and 2 side vents; fine dust activated carbon filter for filtering dust, soot, and pollen; dew point sensor; residual heat function for efficient use of engine waste heat)
- Package: Infotainment Package
- Package: Light (Adaptive Highbeam Assist - automatic switching of the high beams, camera on the inside of the windshield, detects oncoming and preceding illuminated vehicles, activated by pressing the steering wheel control lever to the high beam position)

- Upholstery: ARTICO leatherette/DINAMICA microfiber
- Radio: Extended MBUX functions (personalization (profiles) and prediction functions - MBUX voice assistant "LINGUATRONIC" with natural language understanding - activation via Hey Mercedes - learning function of the MBUX voice assistant through connection with a cloud-based online dictionary, Mercedes me connect service free of charge for 3 years from activation - Wi-Fi hotspot - internet radio)
- Radio accessories: Central display (High-resolution central display, slightly inclined towards the driver with a 24 cm (9.5") screen diagonal, with MBUX multimedia system - touch display with LCD technology)
- Tire pressure monitoring system (TPMS)
- Remote Services Plus (Communication module - Mercedes me services: remote vehicle status query, programming of auxiliary heating/ventilation, remote door locking and unlocking, sunroof/windows with remote locking and opening including ventilation remote control, personalization, vehicle location, vehicle tracking, geographic vehicle monitoring, parking service monitoring, finder function (Remote Vehicle Finder), notification when exceeding the driving speed, Send2Car function)

- Chassis: AGILITY CONTROL chassis with selective damping system with lowering
- Package: Advanced Comfort Package
- Package: Assistance (Blind Spot Assist: The system can warn you of side collisions with other road users in your blind spot, especially as soon as you activate the turn signal. Even after driving, the system remains vigilant and warns you if you open the door at the wrong moment. An important safety feature – especially for cyclists.)
- Package: Business (for Avantgarde Exterior (P15) or AMG Line Exterior (P31)) (Mirror Package: Electrically folding exterior mirrors with automatic dimming function, ambient lighting with Mercedes-Benz logo projection - Advanced Comfort Package: Heated seats for driver and front passenger, 4-way lumbar support, seat comfort package - Parking Package: Parking package with reversing camera - Infotainment Package: MBUX Navigation Premium, traffic sign assist, smartphone integration - Larger fuel tank)
- Package: Park
- Wheels: 48.3 cm (19") AMG multi-spoke light-alloy wheels (painted black with high-sheen rim flange, front axle 225/40 R 19 on 7.5 J x 19 ET 40, rear axle 255/35 R 19 on 8.5 J x 19 ET 58, 1)



- Package: Night (for T-Model with AMG Line exterior) (Radiator grille: diamond grille with silver pins and high-gloss black louvre (18") AMG light-alloy wheels in 5-spoke design, aerodynamically optimized, black-painted, high-shine finish, with front axle 225/45 R18 on 7.5Jx18 ET40, rear axle 245/40 R18 on 8Jx18 ET52 AMG front apron with high-gloss black wing trim. Rear bumper with high-gloss black wing trim. Belt trim strip and window surrounds in high-gloss black. Exterior mirror housings in high-gloss black. Heat-insulating dark-tinted rear glass (from the B-pillar). Roof rails in black.)
- Type designation removed from trunk lid
- Decorative elements, wood, linden, line structure, anthracite, open-pore
- Wheels: Complete summer wheel sets fitted at the factory
- Wheels: Winter complete set of wheels M+S 4x 45.7 cm (18") multi-spoke alloy wheels (black painted and polished with 225/45 R 18 on 7.5 J x 18 ET 40)
- Heated windshield washer system
- Seats: Sports seats
- Heat-insulating dark tinted glass

Brief expert findings

Documents submitted	At the time of the inspection, the vehicle registration certificate Part 2 (title) was available, but the vehicle registration certificate Part 1 (document) was not. (Copy)
VIN comparison	The vehicle identification number (VIN) was read from the vehicle and its conformity with the submitted documents was confirmed by the undersigned during the inspection.
Inspection	The inspection conditions were sufficient for the assessment of the vehicle. Lifting equipment and/or a pit were available for examining the vehicle.
Test drive	No test drive/shunting maneuver was carried out during the inspection of the vehicle.
Engine function test	An engine test run was performed.

Value reducing factors

No.	Component group	Description
1	Front structure	Emblem - Broken / torn - Replace
2	Door - front left side	Door edge - Scratch(es) - Smart repair
3	Rear bumper	Rear bumper - Scratch(es) - Smart repair
4	Door - front right side	Door - Dent / paintcoat damage - Smart repair
5	Wheel / tyres	Alloy rim - front right side - Scratch(es) - Loss in value
6	2nd wheel set	1 alloy rim - Scratch(es) - Loss in value
7	2nd wheel set	1 alloy rim - Scratch(es) - Loss in value
8	2nd wheel set	1 alloy rim - Scratched - Replace
9	Front bumper	Front bumper - Scratch(es) - Paint

Wear and tear

No.	Component group	Description
1	Vehicle glazing	Windscreen with lane departure assistant - Stone chips - No deduction
2	Bonnet	Bonnet - Stone chips - No deduction

The vehicle shows signs of wear and tear commensurate with its age and use.

Previous damages

No.	Previous damage	Extent of damage (Net)
1	Rear, Provided by user / customer, from 23 Apr 2024	682,50 €



Order/Scope of Order

An order was placed to prepare a sales report for the described vehicle. This report includes the following:

- Description of key vehicle information
- Documentation of equipment features
(Delivery by third-party service providers)
- Documentation of damage, defects, missing parts
- Documentation of prior damage, unrepaired prior damage, repainting
- A brief visual or functional inspection of the equipment details, if possible.
(Functional testing of driver assistance systems is not included in the scope of services!)
- a photographic documentation of the vehicle

Basis for the order

This product is based on the guidelines for vehicle returns and valuations published by Alphabet Fleet GmbH. The expert makes the specific findings in each individual case objectively, within the framework of the prescribed standards, based on their own expertise.

The vehicle inspection takes place in a fully assembled, unassembled state.

Damage or defects that can only be detected during disassembly/diagnostic work or through further investigation remain within the realm of prognostic risk. An increased risk exists due to concealed defects caused by fraudulent misrepresentation and which were not identifiable by the expert.

Damage or defects resulting from normal use or wear and tear of the vehicle will be accepted in accordance with the applicable standard.

There was no explicit identification or monetary consideration of the expected features within the product.

Features which, in their nature and extent, slightly exceed normal use but do not constitute unacceptable damage, will be documented and indicated as signs of wear, if applicable.

Damage or defects that, according to the applicable standard, can no longer be attributed to normal use or wear and tear are listed under "Value Reducing Factors" in the product description.

Depending on the product specification, a monetary ID can be provided. If this takes place, the costs can be 100% d or pro rata depending on the vehicle's age and mileage.

Previous damages

According to available information previous damages were repaired at the vehicle. Traces of repairs, which allow conclusions about the area of repair, were not recognizable during the inspection.



Figure 1: Diagonal front (left)



Figure 2: Diagonal front (right)



Figure 3: Diagonal rear (left)



Figure 4: Diagonal rear (right)



Figure 5: Interior - front



Figure 6: Interior - rear



Figure 7: Instrument cluster



Figure 8: Instrument panel

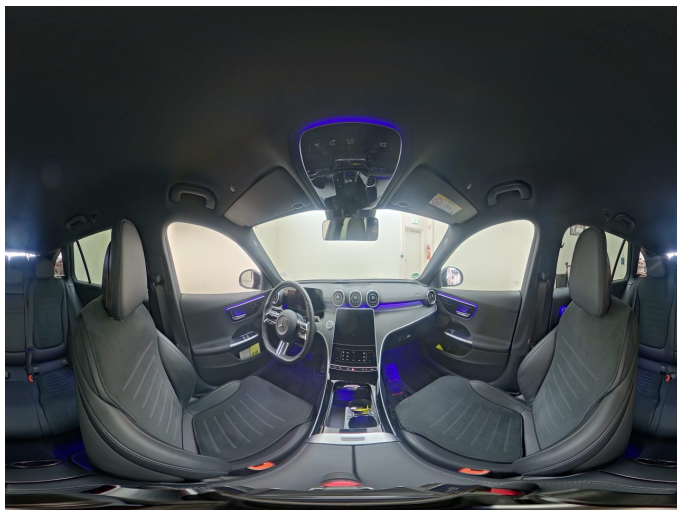


Figure 9: Interior 360° view



Figure 10: Cargo area

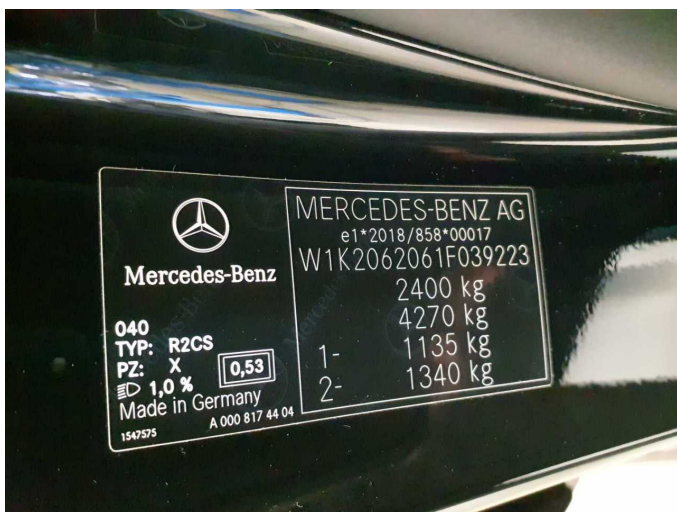


Figure 11: VIN



Figure 12: Mounted tyres



Figure 19: Misc.



Figure 20: Misc.



Figure 21: Misc.



Figure 22: Misc.



Figure 23: Misc.



Figure 24: Misc.



Figure 25: Misc.

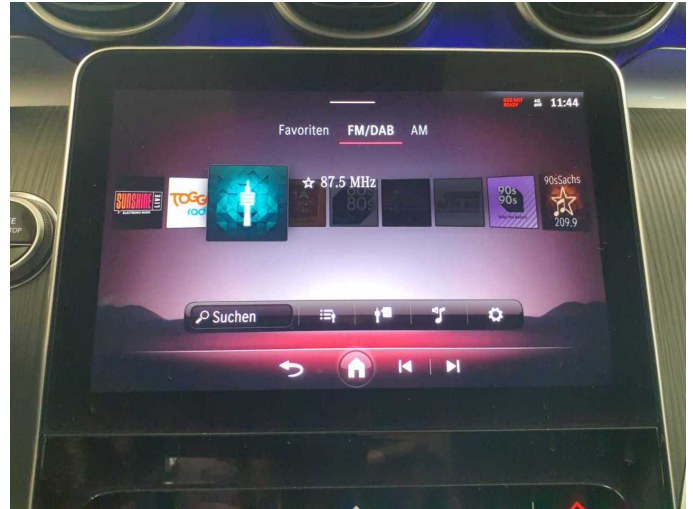


Figure 26: Misc.

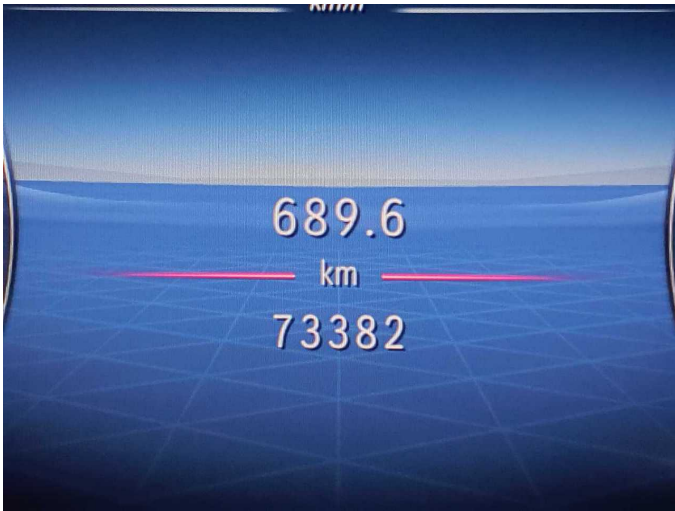


Figure 27: Misc.



Figure 28: Misc.

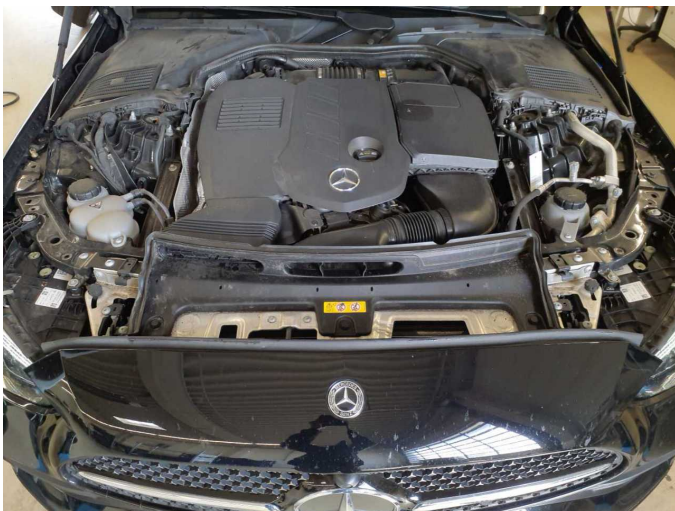


Figure 29: Misc.



Figure 30: Misc.



Figure 31: Misc.



Figure 32: Misc.



Figure 33: Misc.

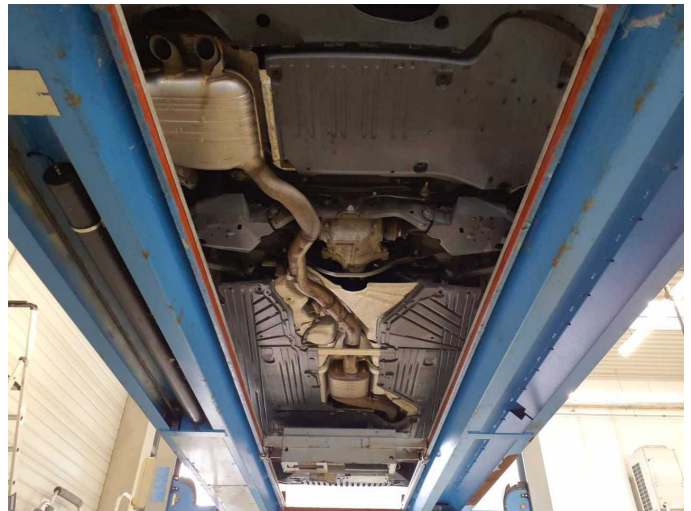
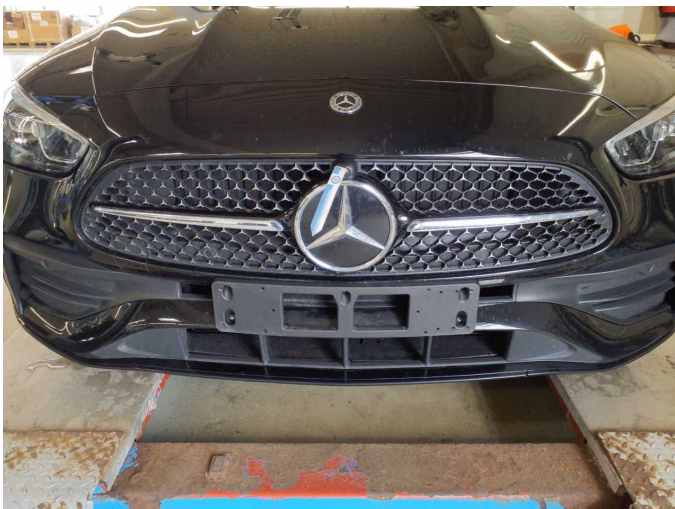


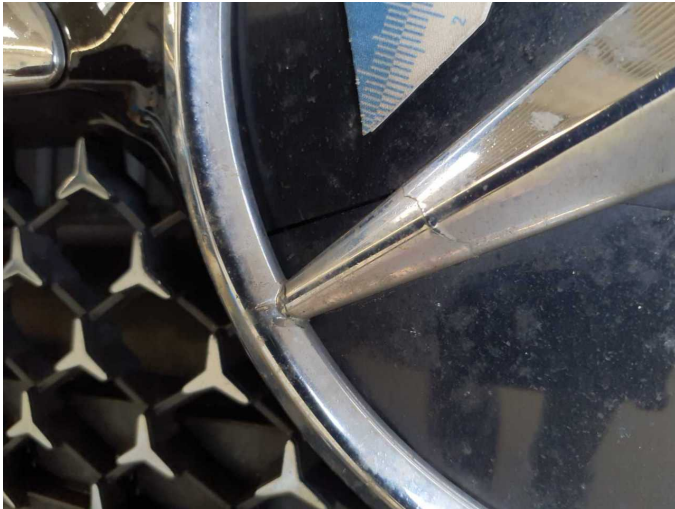
Figure 34: Misc.



Damage 1: Front structure: Emblem - Broken / torn - Replace



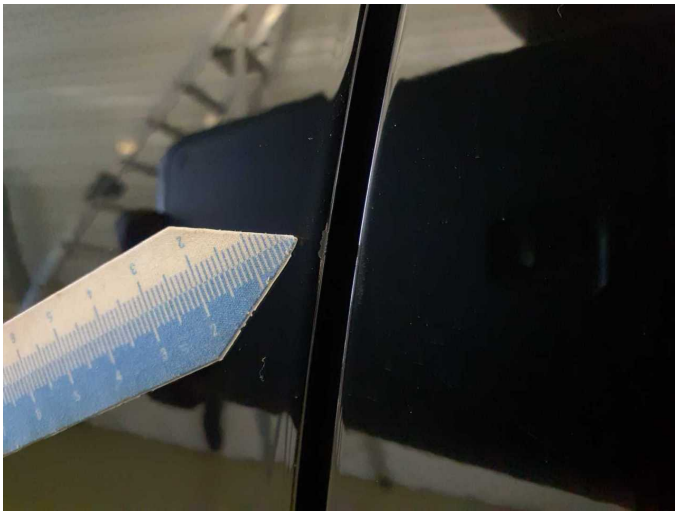
Damage 1: Front structure: Emblem - Broken / torn - Replace



Damage 1: Front structure: Emblem - Broken / torn - Replace



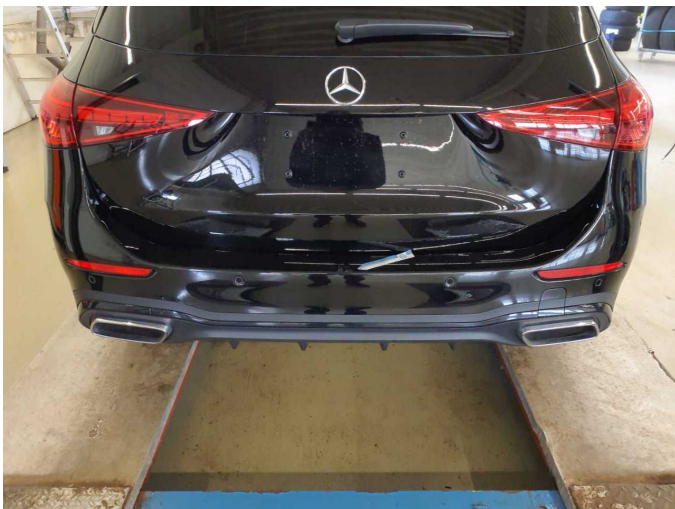
Damage 2: Door - front left side: Door edge - Scratch(es) - Smart repair



Damage 2: Door - front left side: Door edge - Scratch(es) - Smart repair



Damage 2: Door - front left side: Door edge - Scratch(es) - Smart repair



Damage 3: Rear bumper: Rear bumper - Scratch(es) - Smart repair



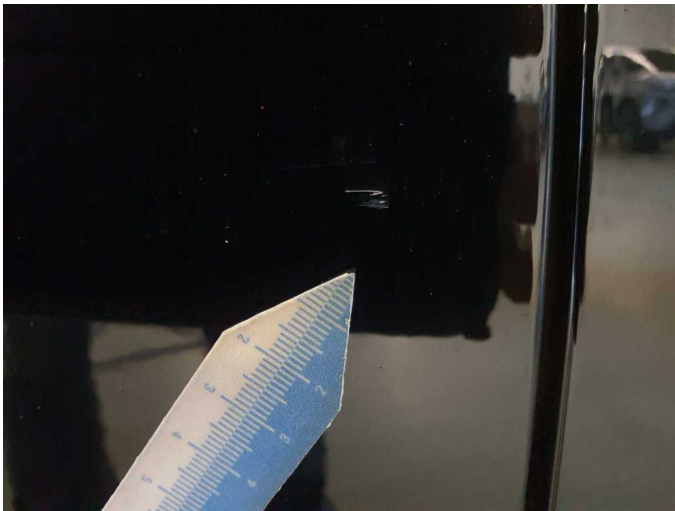
Damage 3: Rear bumper: Rear bumper - Scratch(es) - Smart repair



Damage 4: Door - front right side: Door - Dent / paintcoat damage - Smart repair



Damage 4: Door - front right side: Door - Dent / paintcoat damage - Smart repair



Damage 4: Door - front right side: Door - Dent / paintcoat damage - Smart repair



Damage 5: Wheel / tyres: Alloy rim - front right side - Scratch(es) - Loss in value



Damage 5: Wheel / tyres: Alloy rim - front right side - Scratch(es) - Loss in value



Damage 6: 2nd wheel set: 1 alloy rim - Scratch(es) - Loss in value



Damage 6: 2nd wheel set: 1 alloy rim - Scratch(es) - Loss in value



Damage 6: 2nd wheel set: 1 alloy rim - Scratch(es) - Loss in value



Damage 7: 2nd wheel set: 1 alloy rim - Scratch(es) - Loss in value



Damage 7: 2nd wheel set: 1 alloy rim - Scratch(es) - Loss in value



Damage 7: 2nd wheel set: 1 alloy rim - Scratch(es) - Loss in value



Damage 7: 2nd wheel set: 1 alloy rim - Scratch(es) - Loss in value



Damage 7: 2nd wheel set: 1 alloy rim - Scratch(es) - Loss in value



Damage 8: 2nd wheel set: 1 alloy rim - Scratched - Replace



Damage 8: 2nd wheel set: 1 alloy rim - Scratched - Replace



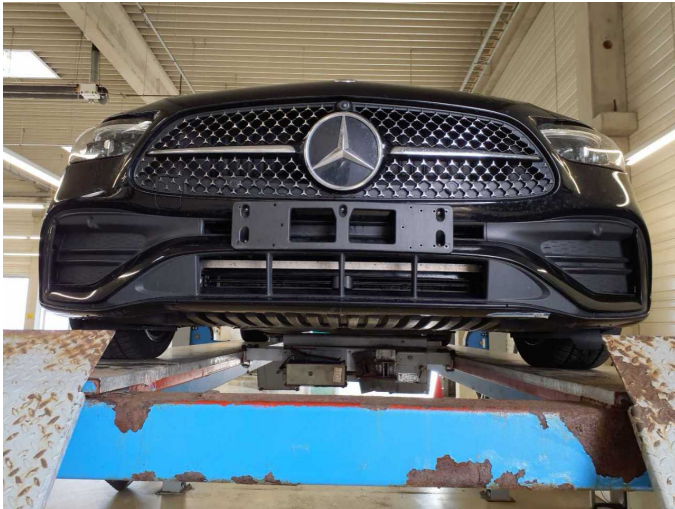
Damage 8: 2nd wheel set: 1 alloy rim - Scratched - Replace



Damage 8: 2nd wheel set: 1 alloy rim - Scratched - Replace



Damage 8: 2nd wheel set: 1 alloy rim - Scratched - Replace



Damage 9: Front bumper: Front bumper - Scratch(es) - Paint



Damage 9: Front bumper: Front bumper - Scratch(es) - Paint



Damage 9: Front bumper: Front bumper - Scratch(es) - Paint



Damage 9: Front bumper: Front bumper - Scratch(es) - Paint



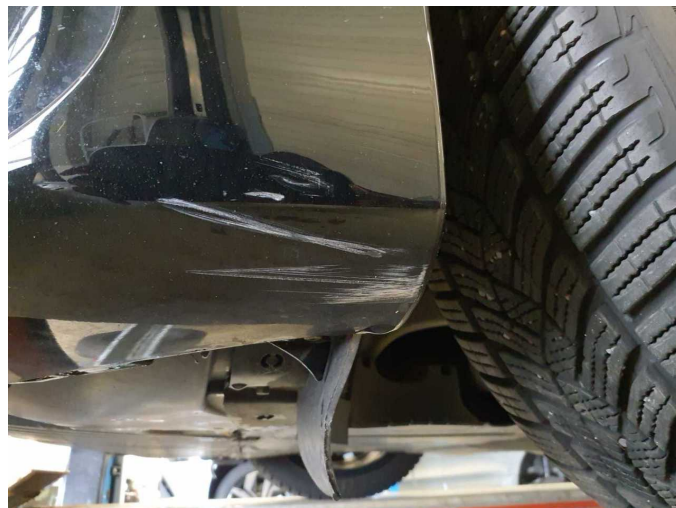
Damage 9: Front bumper: Front bumper - Scratch(es) - Paint



Damage 9: Front bumper: Front bumper - Scratch(es) - Paint



Damage 9: Front bumper: Front bumper - Scratch(es) - Paint



Damage 9: Front bumper: Front bumper - Scratch(es) - Paint



Wartungshistorie

(gemäß Auftraggeber Informationen)

Fahrgestellnummer: W1K2062061F039223
Hersteller / Modell: MERCEDES-BENZ MERCEDES-BENZ C 300 T d 9G-TRONIC
AMG Line

Datum	KM-Stand	Beschreibung
26.05.2025	56.717	HU + AU; Reparatur Sonstiges; Systemtest/Eigendiagnose; Wasserpumpen
22.04.2025	56.717	Bremsscheiben hinten; Regelwartungsdienst
24.06.2024	41.092	Systemtest/Eigendiagnose
08.05.2024	38.413	Regelwartungsdienst
25.04.2023	17.145	Regelwartungsdienst