

## Expertise

Protocol number: 45528614  
Order No. / Reference: 26374156  
Inspection date: 19 May 2026

Manufacturer: Skoda

Model: Kodiaq 2.0 TDI DSG Ambition

VIN: TMBJJ7NS1P8029216



### Vehicle details

#### Manufacturer / Type / Model / Equipment

Skoda Kodiaq 2.0 TDI DSG Ambition

**Vehicle Identification number** TMBJJ7NS1P8029216

**Mileage (Read)** 174,920 km

**First registration** 13 Apr 2023

**Number of holders** 1

**Power / Engine displacement** 110 kw / 1,968 ccm

**Fuel type / Cylinder** Diesel / 4

**Gearbox / Number of gears** Automatic / 7

**Type of drive** Front drive

**Type of vehicle** SUV

**Colour / colour code** Energy-blau Uni

**Doors / Seats** 5 / 7

**Upholstery type** Cloth

**Colour of upholstery** Black-Dark grey



Vehicle details			
<b>Maintenance booklet / proof</b>	digital proof / complete	<b>Next maintenance in</b>	24,400 km
<b>Last service on / at</b>	03/2026 at 172,889 km		
<b>Key is / should be</b>	2 / 2	<b>FZG documents</b>	ZB#2 (B) was available (copy), ZB#1 (S) was not available.
		<b>Letter No.</b>	GQ538335
<b>Previous damage / Accident</b>	Detectable	<b>Repainting</b>	None detectable
<b>Inspection conditions</b>	sufficient	<b>Lifting equipment / pit</b>	yes
<b>Test drive</b>	Not performed	<b>Engine function test</b>	Performed
<b>Manufacturer key number/ type code number</b>	8004 / ART 03863		
<b>Emission standard</b>	EURO6;WLTP;AP;PI/CI; M, N1 I	<b>fine dust sticker</b>	
<b>Permitted total weight</b>	2,434 kg	<b>Empty weight</b>	

## Tyres

Mounted tyres				
#	Tyre size	Type of tyre	Manufacturer	Tread depth
1)	215/65 R17 99H	Winter tyres on Light alloy	Continental	6mm / 6mm
2)	215/65 R17 99H	Winter tyres on Light alloy	Continental	7mm / 7mm
Additional tyres				
#	Tyre size	Type of tyre	Manufacturer	Tread depth
1)	215/65 R17 99V	Summer tyres on Light alloy	Continental	5mm / 5mm
2)	215/65 R17 99V	Summer tyres on Light alloy	Continental	6mm / 6mm
Replacement				
Typ	Tyre size	Type of tyre	Manufacturer	Tread depth
	Tirefit	Expiration date 10/2026		

**Legend: Tread depth information for the left tire is listed first, for the right tire it is listed second on the axle in the direction of travel.**



## Equipment

### Standard equipment

- 12V socket in the center console and in the trunk
- Storage compartments behind the wheel arches in the trunk
- Airbag, driver's knee airbag
- Airbag, front side airbags
- Anti-lock braking system (ABS)
- Dashboard in black / black, door trim in black
- Electrically adjustable and heated exterior mirrors with integrated side indicators
- Hydraulic brake assist (HBA)
- Grey headliner
- Decorative inlay, brushed aluminum
- Digital Cockpit (8")
- Third brake light
- eCall
- Electronic transverse differential lock (XDS+)
- Driving light assistant and rain sensor
- Front radar assistant including city emergency braking function with pedestrian detection
- Transmission: 7-speed dual-clutch transmission (DSG)
- Illuminated glove compartment
- Boot cover, roll-up and removable
- Front and rear headrests are height-adjustable.
- LED taillights in crystal glass look with animated turn signals
- Reading lights at the front of the headliner
- Rear center armrest with cup holders
- Engine drag torque control (MSR)
- Fog lights with integrated LED daytime running lights
- Upholstery: Cloth
- Radio: Swing 6.5" music system
- Radio accessories: Digital radio reception DAB+
- Tire pressure monitoring
- Rear seat backrest split 60:40, foldable, longitudinally adjustable, backrest angle adjustable
- Electromechanical power steering
- Seats: Adjustable lumbar support in the front seats
- Skoda Care Connect
- Speed limiter
- Telephone: Comfort hands-free telephone system (without connection to the external antenna)
- Immobiliser
- Storage compartment on the left wheel arch
- front aero windshield wipers
- Airbag, driver and passenger
- Airbag, head airbags
- Allergen filter
- Traction control (ASR)
- Electrically folding exterior mirrors including interior and driver's side mirrors with automatic dimming
- Hill start assist
- Care Connect: Proactive services (10-year term)
- Roof rails, black
- Diesel particulate filter
- Tachometer
- Easy Start (start-stop button)
- Electronic parking brake including auto-hold function
- ESC Electronic Stability Control
- Electric windows front and rear
- Closed storage compartment on the driver's side
- Cruise control
- Tinted windows
- Isofix anchorage on the outer rear seats including top tether
- Paint finish: Solid
- LED headlights with daytime running lights
- Steering wheel: Leather steering wheel with multifunction buttons including paddle shifters.
- Front center armrest, including storage compartment
- Multi-collision brake
- Rear parking sensors
- Wheel arch cover
- Radio accessories: 8 speakers
- Tire Mobility Kit
- Wheels: 17" Mytikas alloy wheels
- Heated windshield washer nozzles, front
- Headlights washer / wiper system
- Kodiaq seat belts
- Seats: Height-adjustable front seats
- Sun visor on driver and passenger side with illuminated vanity mirror
- Variable fastening concept in the trunk
- Lashing eyes in the trunk
- Central locking with remote control



### Extra equipment

- Swiveling trailer hitch (with electric release, including trailer stabilization)
- Paint finish: Special paint finish, solid color
- Package: Business Columbus (Ambition) (Dynamic radio navigation system Columbus - 9.2" capacitive color display - Digital Cockpit Plus (10") - Wireless SmartLink for Apple CarPlay - Voice control - Phonebox with inductive charging function (connection via external antenna) - Driver fatigue detection - 230V socket and one USB charging port (Type-C) - Electric tailgate operation including comfort opening - Sunset - Keyless entry - Luggage net partition - Infotainment Online (3-year subscription))
- Climatronic air conditioning (3-zone) (fully automatic, separately adjustable for driver, front passenger and rear seats, including humidity sensor and odor and allergen filter)
- Package: Family (Removable waste bin for the door panel - Sunshades for the rear side windows - Door edge protectors)
- Front and rear parking sensors
- Rear view camera
- Seats: 3rd row of seats (7-seater), cargo cover in the trunk

### Brief expert findings

Documents submitted	At the time of the inspection, the vehicle registration certificate Part 2 (title) was available, but the vehicle registration certificate Part 1 (document) was not. (Copy)
VIN comparison	The vehicle identification number (VIN) was read from the vehicle and its conformity with the submitted documents was confirmed by the undersigned during the inspection.
Inspection	The inspection conditions were sufficient for the assessment of the vehicle. Lifting equipment and/or a pit were available for examining the vehicle.
Test drive	No test drive/shunting maneuver was carried out during the inspection of the vehicle.
Engine function test	An engine test run was performed.

### Value reducing factors

No.	Component group	Description
1	Door - front left side	Door edge - Scratch(es) - Smart repair
2	Mudguard - right side	Mudguard - right side - Dent / paintcoat damage - Smart repair
3	Door - rear left side	Door - Scratched - Paint
4	Door - rear right side	Door - Dent / paintcoat damage - Paint
5	Door - front right side	Door - Dent / paintcoat damage - Paint
6	Boot lid / rear door	Boot lid - Scratch(es) - Paint

### Wear and tear

No.	Component group	Description
1	Vehicle glazing	Windscreen - Stone chips - No deduction
2	Bonnet	Bonnet - Stone chips - No deduction
3	Roof	Roof rail - right side - dent(s) - No deduction
4	Trim / covers	Floor mats - Broken / torn - No deduction

The vehicle shows signs of wear and tear commensurate with its age and use.

### Missing parts

#### Description

Equipment - Umbrella

Equipment - Tirefit compressor



## Accident damages

### No. Accident

1 Front

## Order/Scope of Order

An order was placed to prepare a sales report for the described vehicle. This report includes the following:

- Description of key vehicle information
- Documentation of equipment features  
(*Delivery by third-party service providers*)
- Documentation of damage, defects, missing parts
- Documentation of prior damage, unrepaired prior damage, repainting
- A brief visual or functional inspection of the equipment details, if possible.  
(*Functional testing of driver assistance systems is not included in the scope of services!*)
- a photographic documentation of the vehicle

## Basis for the order

This product is based on the guidelines for vehicle returns and valuations published by Alphabet Fleet GmbH. The expert makes the specific findings in each individual case objectively, within the framework of the prescribed standards, based on their own expertise.

The vehicle inspection takes place in a fully assembled, unassembled state.

Damage or defects that can only be detected during disassembly/diagnostic work or through further investigation remain within the realm of prognostic risk. An increased risk exists due to concealed defects caused by fraudulent misrepresentation and which were not identifiable by the expert.

Damage or defects resulting from normal use or wear and tear of the vehicle will be accepted in accordance with the applicable standard.

There was no explicit identification or monetary consideration of the expected features within the product.

Features which, in their nature and extent, slightly exceed normal use but do not constitute unacceptable damage, will be documented and indicated as signs of wear, if applicable.

Damage or defects that, according to the applicable standard, can no longer be attributed to normal use or wear and tear are listed under "Value Reducing Factors" in the product description.

Depending on the product specification, a monetary ID can be provided. If this takes place, the costs can be 100% d or pro rata depending on the vehicle's age and mileage.

## Previous damages

Non-repaired previous damages were found at the vehicle. The necessary repair costs are listed in the expert report or if necessary, are listed in detail in a separately enclosed repair cost calculation.

## Comments

Der montierte Winterradsatz ist kein Bestandteil der Ausstattung.



Figure 1: Diagonal front (left)



Figure 2: Diagonal front (right)



Figure 3: Diagonal rear (left)



Figure 4: Diagonal rear (right)

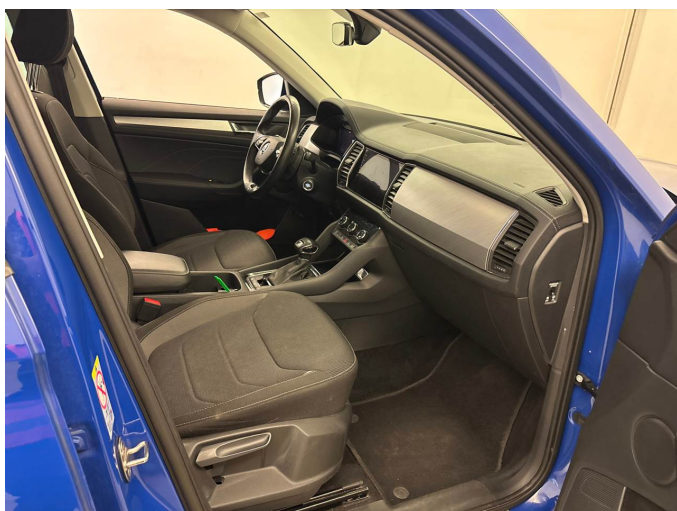


Figure 5: Interior - front



Figure 6: Interior - rear



Figure 7: Instrument cluster



Figure 8: Instrument panel



Figure 9: Interior 360° view



Figure 10: Cargo area

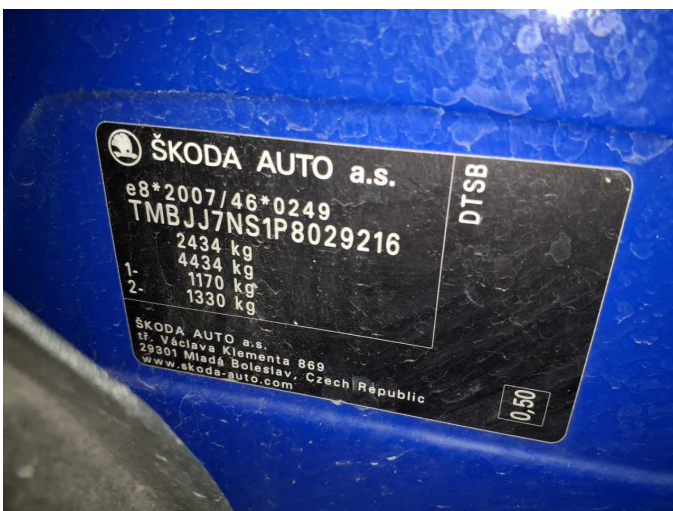


Figure 11: VIN



Figure 12: Mounted tyres



Figure 13: Documents



Figure 14: Documents



Figure 15: Documents



Figure 16: Additional tyres

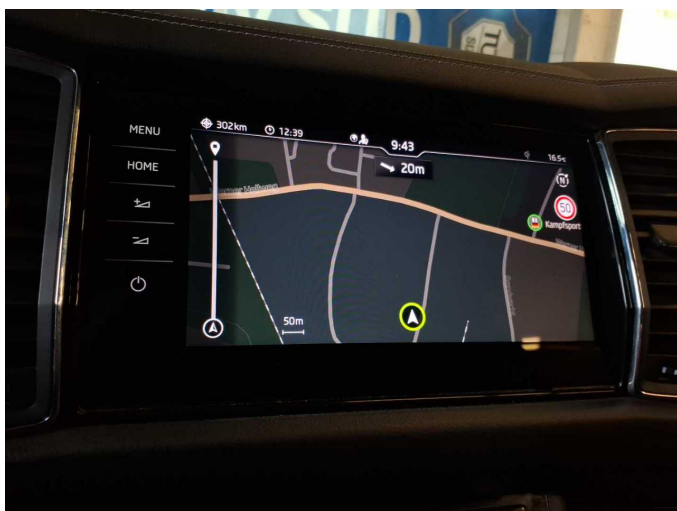


Figure 17: Navigation



Figure 18: Misc.



Figure 19: Misc.



Figure 20: Misc.



Figure 21: Misc.

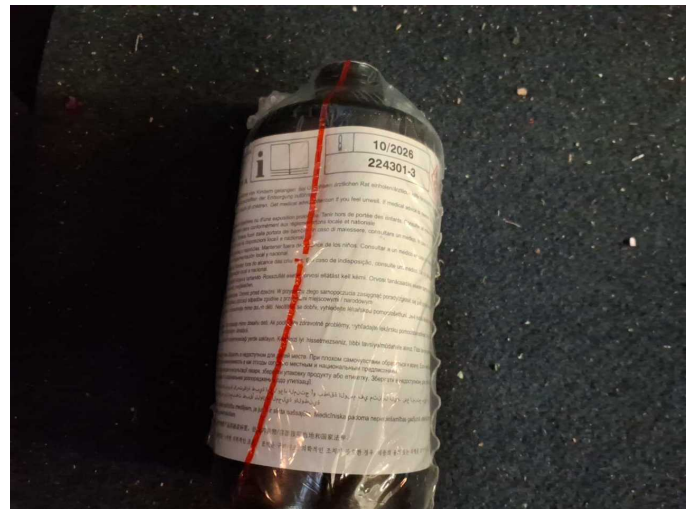


Figure 22: Misc.



Figure 23: Misc.

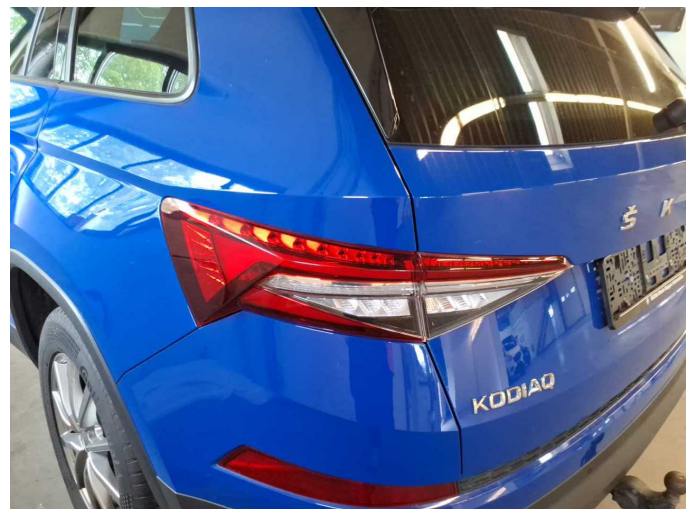


Figure 24: Misc.



Figure 25: Misc.



Figure 26: Misc.



Figure 27: Misc.



Figure 28: Misc.

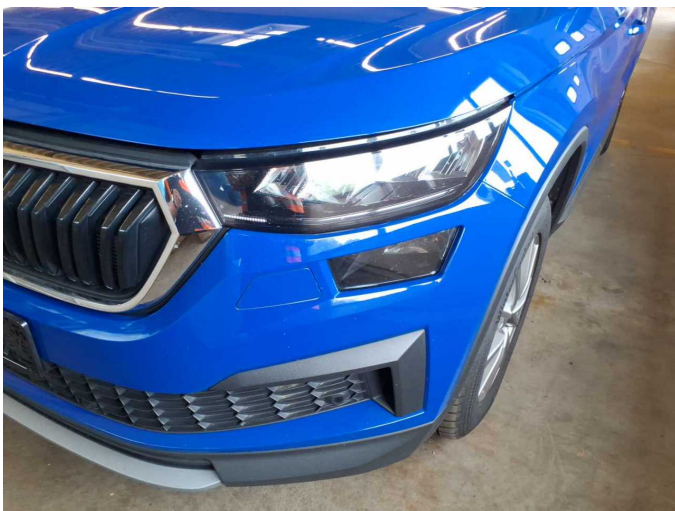


Figure 29: Misc.

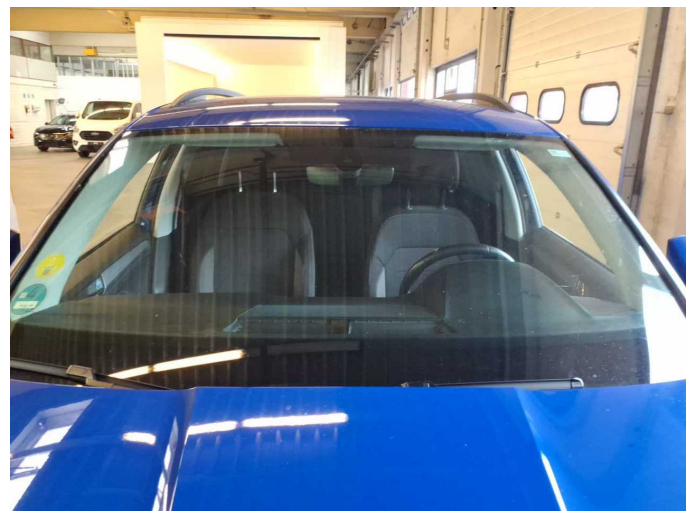


Figure 30: Misc.



Figure 31: Misc.



Figure 32: Misc.



Figure 33: Misc.



Figure 34: Misc.



Figure 35: Misc.



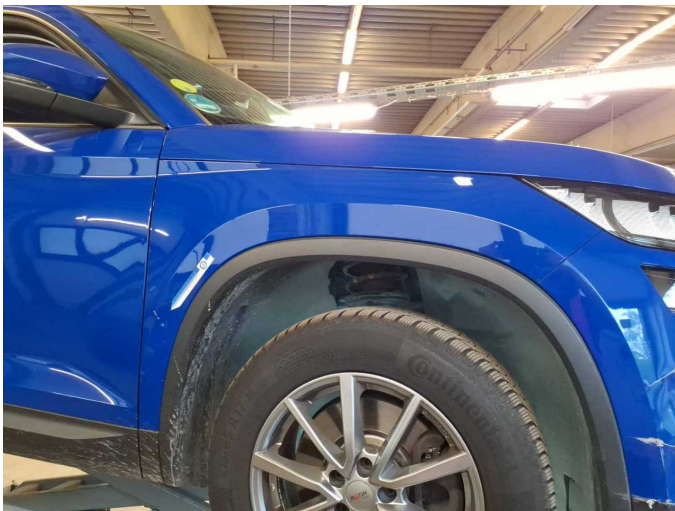
Figure 36: Misc.



**Damage 1:** Door - front left side: Door edge - Scratch(es) - Smart repair



**Damage 1:** Door - front left side: Door edge - Scratch(es) - Smart repair



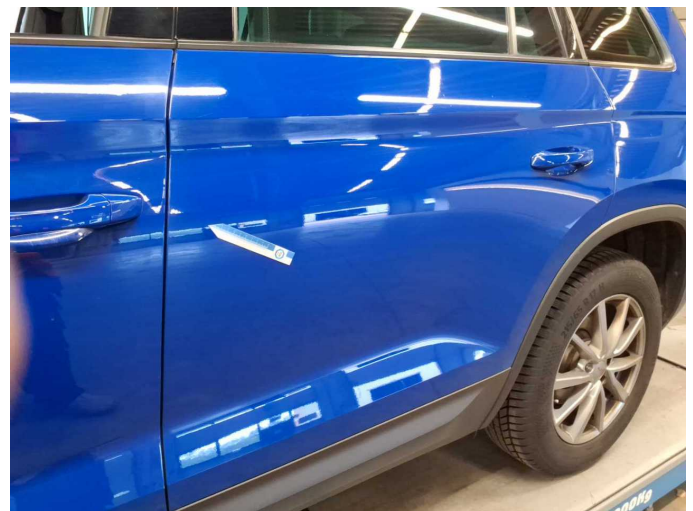
**Damage 2:** Mudguard - right side: Mudguard - right side - Dent / paintcoat damage - Smart repair



**Damage 2:** Mudguard - right side: Mudguard - right side - Dent / paintcoat damage - Smart repair



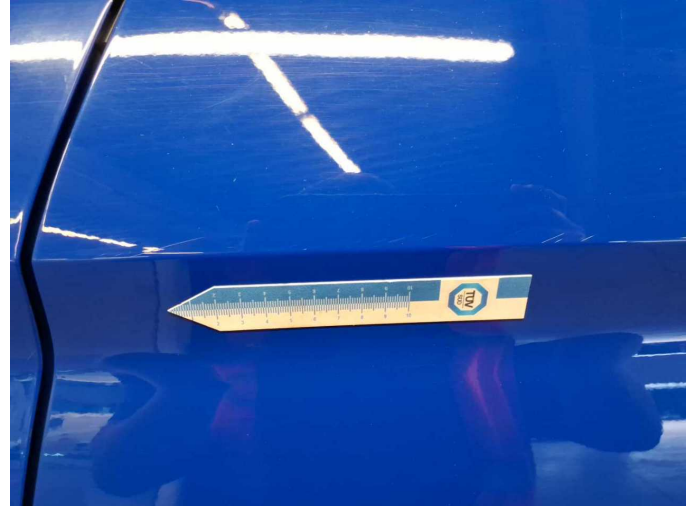
**Damage 2:** Mudguard - right side: Mudguard - right side - Dent / paintcoat damage - Smart repair



**Damage 3:** Door - rear left side: Door - Scratched - Paint



**Damage 3:** Door - rear left side: Door - Scratched - Paint



**Damage 3:** Door - rear left side: Door - Scratched - Paint



**Damage 3:** Door - rear left side: Door - Scratched - Paint



**Damage 4:** Door - rear right side: Door - Dent / paintcoat damage - Paint



**Damage 4:** Door - rear right side: Door - Dent / paintcoat damage - Paint



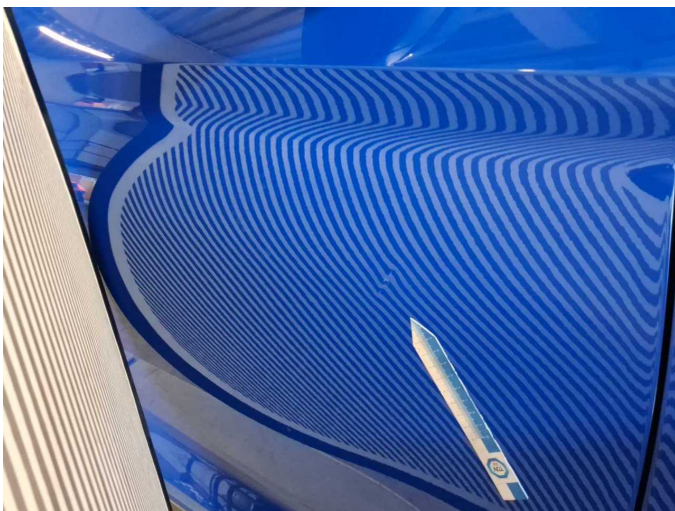
**Damage 4:** Door - rear right side: Door - Dent / paintcoat damage - Paint



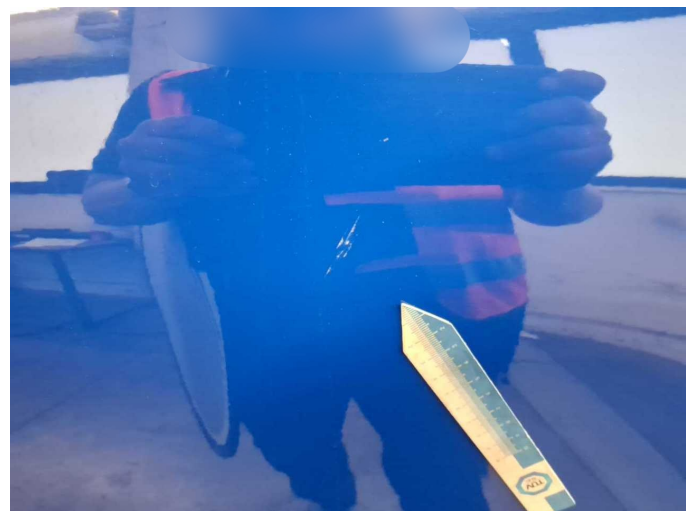
**Damage 4:** Door - rear right side: Door - Dent / paintcoat damage - Paint



**Damage 5:** Door - front right side: Door - Dent / paintcoat damage - Paint



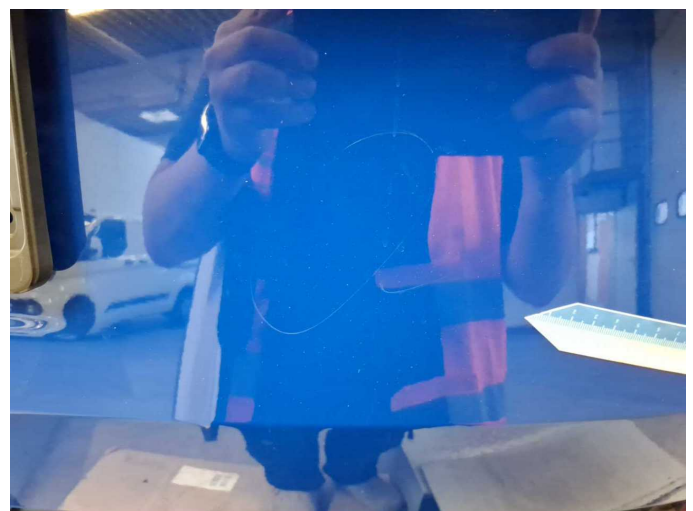
**Damage 5:** Door - front right side: Door - Dent / paintcoat damage - Paint



**Damage 5:** Door - front right side: Door - Dent / paintcoat damage - Paint



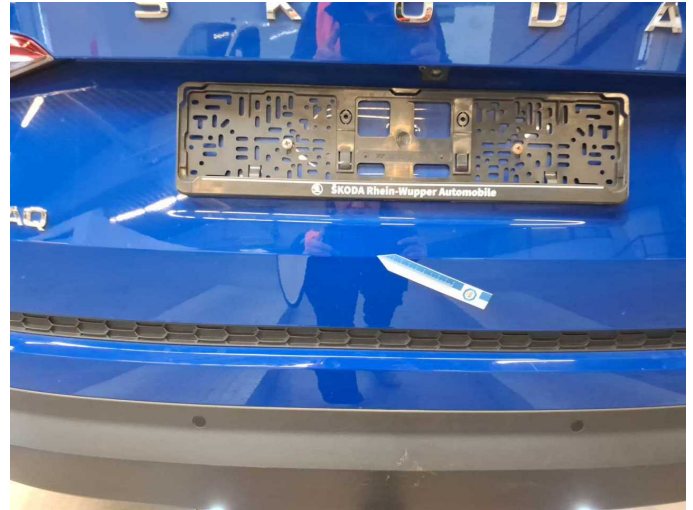
**Damage 6:** Boot lid / rear door: Boot lid - Scratch(es) - Paint



**Damage 6:** Boot lid / rear door: Boot lid - Scratch(es) - Paint



**Damage 6:** Boot lid / rear door: Boot lid - Scratch(es) - Paint



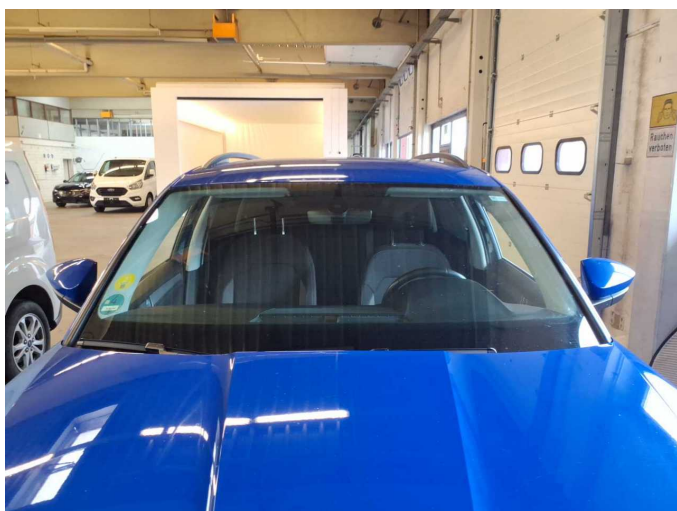
**Damage 6:** Boot lid / rear door: Boot lid - Scratch(es) - Paint



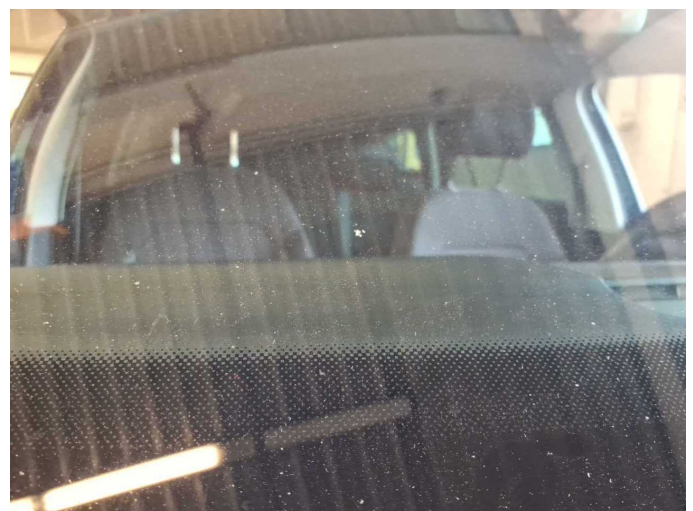
**Damage 6:** Boot lid / rear door: Boot lid - Scratch(es) - Paint



**Damage 6:** Boot lid / rear door: Boot lid - Scratch(es) - Paint



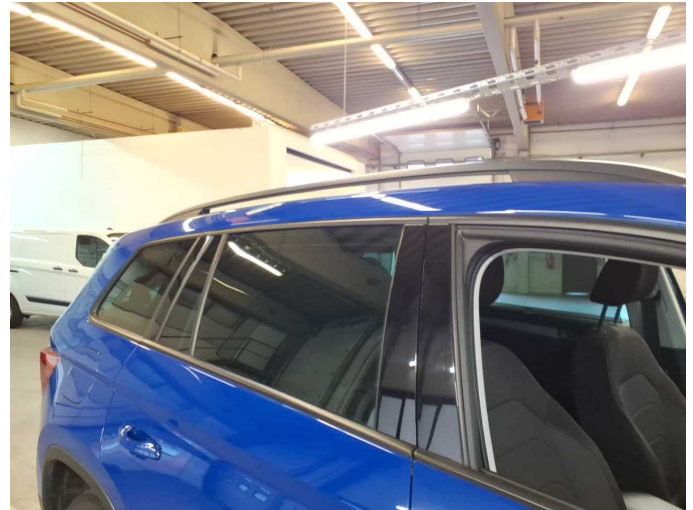
**Wear and tear 1:** Vehicle glazing: Windscreen - Stone chips - No deduction



**Wear and tear 1:** Vehicle glazing: Windscreen - Stone chips - No deduction



**Wear and tear 2:** Bonnet: Bonnet - Stone chips - No deduction



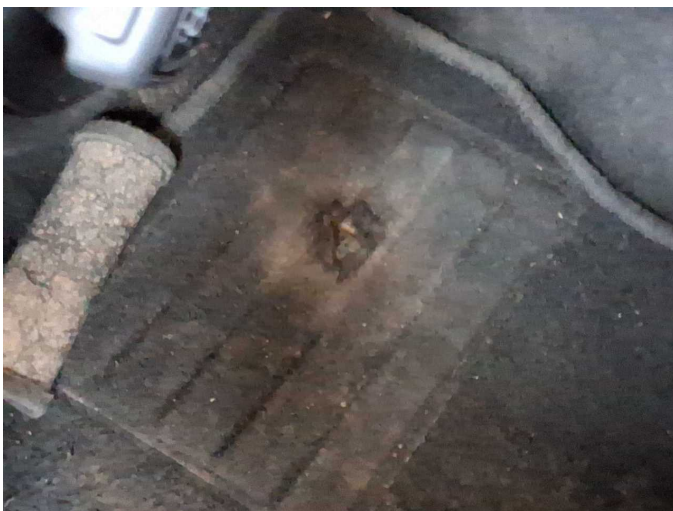
**Wear and tear 3:** Roof: Roof rail - right side - dent(s) - No deduction



**Wear and tear 3:** Roof: Roof rail - right side - dent(s) - No deduction



**Wear and tear 4:** Trim / covers: Floor mats - Broken / torn - No deduction



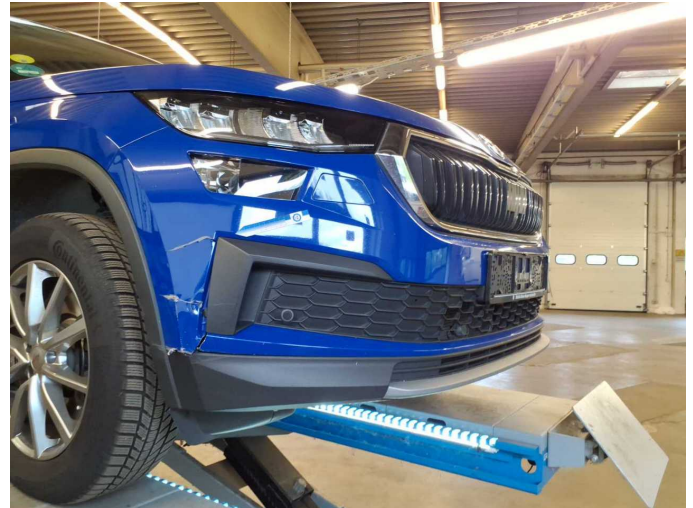
**Wear and tear 4:** Trim / covers: Floor mats - Broken / torn - No deduction



**Missing part 1:** Equipment: Umbrella - Missing - Replace



**Missing part 2:** Equipment: Tirefit compressor - Missing - Replace



**Accident 1:** Front



**Accident 1:** Front



**Accident 1:** Front



**Accident 1:** Front



**Accident 1:** Front



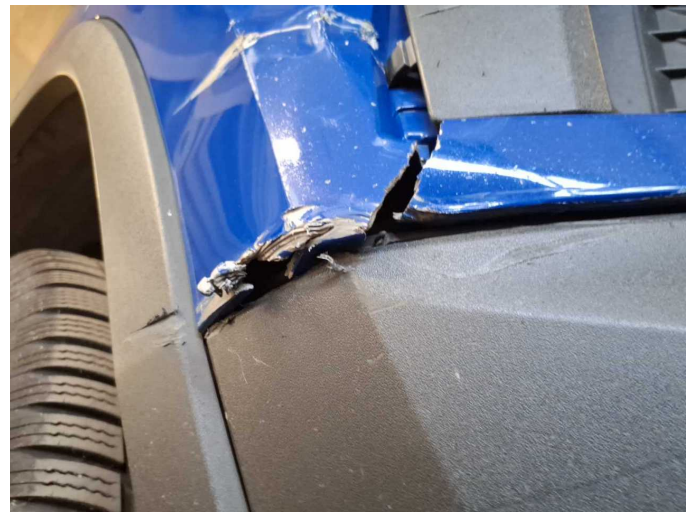
Accident 1: Front



Accident 1: Front



Accident 1: Front



Accident 1: Front



Accident 1: Front



# Wartungshistorie

(gemäß Auftraggeber Informationen)

Fahrgestellnummer: TMBJJ7NS1P8029216  
Hersteller / Modell: SKODA SKODA Kodiaq 2.0 TDI DSG Ambition

Datum	KM-Stand	Beschreibung
18.03.2026	172.889	Motoröl b. Wartung; Ölfilter ern; Regelwartungsdienst; Wartung Sonstiges
17.11.2025	151.923	Reparatur Sonstiges
29.08.2025	145.496	Bremsscheiben + Klötze h; Bremsscheiben + Klötze v; Getriebeöl ern/ prüfen; Motoröl b. Wartung; Regelwartungsdienst
10.03.2025	119.913	Bremsflüssigkeit ern; Kraftstofffilter ern; Regelwartungsdienst
25.02.2025	114.639	Motoröl b. Wartung; Ölfilter ern; Ölwechsel; Wartung Sonstiges
13.09.2024	89.750	Bremse Sonstiges; Bremsklötze hinten; Bremsklötze vorne; Bremsscheiben hinten; Bremsscheiben vorne; Motoröl b. Wartung; Ölfilter ern; Regelwartungsdienst; Wartung Sonstiges
11.04.2024	57.270	Motoröl b. Wartung; Ölfilter ern; Regelwartungsdienst; Wartung Sonstiges
26.10.2023	29.197	Motoröl b. Wartung; Ölfilter ern; Regelwartungsdienst; Wartung Sonstiges