

Expertise

Protocol number: 44657566
Order number / reference: 26109586
Inspection date: 16 Mar 2026

Manufacturer: Opel

Model: Insignia Sports Tourer 2.0 Diesel Aut. Ultimate

VIN: W0VZS8GP6N1044823



Vehicle details

Manufacturer / Type / Model / Equipment

Opel Insignia Sports Tourer 2.0 Diesel Aut. Ultimate

Vehicle Identification number W0VZS8GP6N1044823

Mileage (Read) 135,128 km

First registration 20 Dec 2022

Number of holders 1

Power / Engine displacement 128 kw / 1,995 ccm

Fuel type / Cylinder Diesel / 4

Gearbox / Number of gears Automatic / 8

Type of drive Front drive

Type of vehicle Station wagon

Colour / colour code Diamant Schwarz Metallic

Doors / Seats 5 / 5

Upholstery type Alcantara / Leather

Colour of upholstery Black



Vehicle details

Maintenance booklet / proof	digital proof / complete	Next maintenance in	25 %
Last maintenance on / at	09/2025 at 115,590 km		
Key is / should be	2 / 2	FZG documents	ZB#2 (B) was available (copy), ZB#1 (S) was not available
		Letter No.	GQ327801
Previous damage / Accident	None detectable	Repainting	None detectable
Inspection conditions	sufficient	Lifting equipment / pit	yes
Test drive	Not performed	Engine function test	Performed
Manufacturer key number/ type code number	1844 / AMC 00298		
Emission standard	EURO6;WLTP;AP;PI/CI; M, N1 I	Fine dust sticker	
Permitted total weight	2,215 kg	Empty weight	

Tyres

Mounted tyres

#	Tyre size	Type of tyre	Manufacturer	Tread depth
1)	225/55 R17 101V	All-season tyres on Light alloy	Continental	5mm / 5mm
2)	225/55 R17 101V	All-season tyres on Light alloy	Continental	6mm / 6mm

Additional tyres

#	Tyre size	Type of tyre	Manufacturer	Tread depth
1)	245/35 R20 95W	Summer tyres on Light alloy	Continental	5mm / 5mm
2)	245/35 R20 95W	Summer tyres on Light alloy	Continental	6mm / 6mm

Replacement

Typ	Tyre size	Type of tyre	Manufacturer	Tread depth
Tirefit		Expiration date 10/2026		

Legend: Tread depth for tires on the left is in the first place, for tires on the right is in the second place on the axle in the direction of travel



Equipment

Standard equipment

- Storage compartments
- Airbag: front airbags and side airbags, driver and front passenger
- Anti-lock braking system (ABS)
- Hill Start Assist
- Brake light, third
- Roof rails, silver anodized
- diesel particulate filter
- Electronic brake force distribution (EBD)
- Electric windows front and rear
- Pedestrian protection including active bonnet
- Luggage compartment cover
- Cruise control
- GS Line interior equipment
- Rear window wiper
- Child safety lock in the rear doors, manual
- Front headrests
- LED headlights
- LED daytime running lights including LED indicators, front and LED taillights
- Center armrest, front
- Parking brake, electric
- Quickheat rapid heating system
- Radio: Multimedia Navi Pro with 8" touchscreen color display
- Tire pressure display
- Power steering
- Visual equipment
- Lane Keeping Assist
- 12-volt power outlet in the trunk
- Traction Control (TC) Plus
- Immobiliser
- Central locking with radio remote control

Extra equipment

- Swiveling trailer hitch (including trailer stability program)
- Package: Innovations 2 (automatic transmission) (Head-up display - Adaptive cruise control (Generation 3), Stop & Go function - Forward collision warning with pedestrian detection and automatic emergency braking, active from 4 km/h, range 150 m. In case of risk of collision, the braking system is prepared and, if necessary, emergency braking / automatic emergency braking is initiated - Traffic sign recognition)
- Park & Go with digital reversing camera (digital reversing camera - reversing assistant - lane change assistant - blind spot warning in both exterior mirrors)
- winter tires

- Adaptive brake light
- Airbag: Head airbag front and rear outside
- Ambient lighting
- Exterior mirrors for driver and passenger side electrically adjustable and heated
- Glasses compartment in the headliner
- Decorative strip hexagon
- tachometer
- Electronic Stabilization Program (ESP - Plus)
- Forward collision warning with pedestrian detection and automatic emergency braking
- Noise-reducing, laminated front side windows
- Transmission: 8-speed automatic transmission
- Back window, heater
- High Gloss Black Exterior Trim (Sports Tourer)
- Automatic climate control two zones
- Headrests, rear (3 pieces)
- LED fog lights
- Steering column height/length adjustable
- Make-up mirrors in both sun visors, illuminated
- Package: Easy-Access
- Upholstery: Alcantara trim, black
- Radio: Digital radio reception DAB+
- Radio accessories: 2 USB interfaces
- Tire repair kit
- Wheels: 8.5 J x 20 alloy wheels in a 5-twin-spoke design
- Seat belts: Three-point seat belts on all seats
- Solar Protect thermal insulation glazing
- Start/Stop system
- Bumpers painted in body color
- Pre-installation for ISOFIX child seat restraint system
- Wireless Charging

- Paint finish: metallic
- Package: Winter 3 (Seat Comfort Equipment 1: Driver's seat 8-way electrically adjustable, memory function for driver's seat and exterior mirrors, electro-pneumatic adjustment of side bolsters, driver's seat massage function, driver's seat heating, multi-stage, driver and front passenger exterior mirrors with ambient lighting, electrically adjustable, heated and folding, 40:20:40 split-folding rear seat, charging package with wireless charging, 2 USB ports in the rear center console, heated ThermoTec windshield, heated rear seats (on the outer seats))



Brief expert findings

Documents submitted	At the time of the inspection, the vehicle registration certificate Part 2 (title) was available, but the vehicle registration certificate Part 1 (document) was not. (Copy)
VIN comparison	The vehicle identification number (VIN) was read from the vehicle and its conformity with the submitted documents was confirmed by the undersigned during the inspection.
Inspection	The inspection conditions were sufficient for the assessment of the vehicle. Lifting equipment and a pit were available for examining the vehicle.
Test drive	No test drive/shunting maneuver was carried out during the inspection of the vehicle.
Engine function test	An engine test run was performed.

Value reducing factors

No.	Component group	Description
1	Documents	Service book (die ersten 2 Inspektionen verspätet ausgeführt) - No deduction
2	Roof	Roof - dent(s) - Smooth repair work
3	Side panel - rear right side	Sill - Dent / paintcoat damage - Smart repair
4	Side panel - rear left side	Sill - Scratched - Smart repair
5	Sill - left side	Trim - Scratched - Smart repair
6	Sill - left side	Sill - Scratched - Smart repair
7	Front axle	Axles / undercarriage (wegen der beschädigten Felgen) - Specify findings - Measure
8	2nd wheel set	3 tyres (245 35 r 20 Sommer) - Broken / torn - Replace
9	Door - front left side	Door - Scratched - Paint
10	Door - rear left side	Door - Dent / paintcoat damage - Repair and paint
11	Rear bumper	Rear bumper - Scratched - Paint
12	Front bumper	Front bumper - Stone chips - Paint
13	2nd wheel set	3 alloy rims (Materialabtrag) - Scratched - repair according to calculation

Wear and tear

No.	Component group	Description
1	Door - front right side	Door edge - Scratched - No deduction
2	Boot lid / rear door	Boot lid - dent(s) - Smooth repair work

The vehicle shows signs of wear commensurate with its age and use.

Order/Scope of order

The order was placed to prepare a sales report for the vehicle described. This includes the following:

- Description of core relevant information about the vehicle
- Documentation of equipment features
(*Delivery by third-party service providers*)
- Documentation of damage, defects, missing parts
- Documentation of previous damage, unrepaired previous damage, repainting
- a brief visual or functional inspection of the equipment details if possible.
(*Functional tests of driver assistance systems are not included in the scope of services!*)
- a photo documentation of the vehicle



Basis for the order

This product is based on the Alphabet Fuhrpark GmbH guidelines for vehicle returns and valuations. The expert makes the explicit findings in each individual case objectively within the framework of the specified standards based on his or her own expertise.

The vehicle inspection takes place in a disassembled state.

Damage or defects that can only be detected during disassembly/diagnosis work or through advanced knowledge remain within the scope of the prognosis risk. An extended risk exists for concealed defects caused by fraudulent deception and not identifiable by the expert.

Damage or defects resulting from normal use or wear and tear of the vehicle will be accepted according to the applicable standard.

There was no explicit identification or monetary consideration of the expected features within the product.

Features which in their nature and severity slightly exceed normal use but do not constitute unacceptable damage will be documented and identified under signs of use if necessary.

Damage or defects that can no longer be attributed to normal use or wear and tear according to the underlying standard are listed in the product under value-reducing factors.

Depending on the product specification, a monetary ID can be provided. If this takes place, the costs can be 100% d or pro rata depending on the vehicle's age and mileage.

Previous damages

No apparent prior damage that had been repaired could be found on the vehicle.



Figure 1: Diagonal front (left)



Figure 2: Diagonal front (right)



Figure 3: Diagonal rear (left)



Figure 4: Diagonal rear (right)



Figure 5: Interior - front



Figure 6: Interior - rear



Figure 7: Instrument cluster



Figure 8: Instrument panel



Figure 9: Interior 360° view



Figure 10: Cargo area



Figure 11: VIN



Figure 12: Mounted tyres



Figure 13: Documents



Figure 14: Documents



Figure 15: Documents



Figure 16: Additional tyres

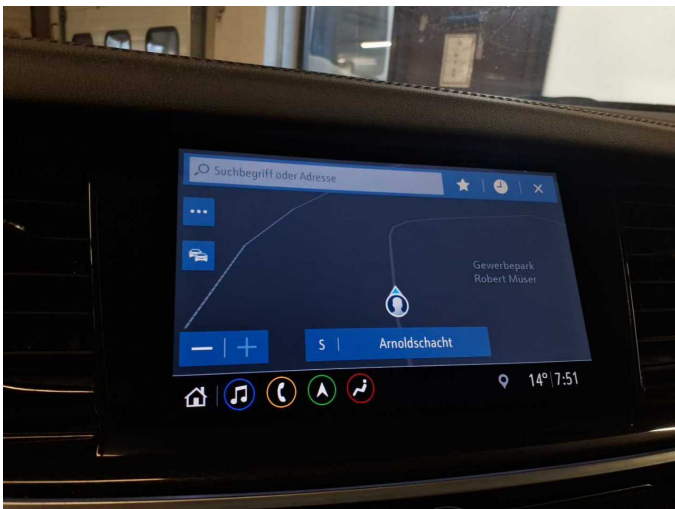


Figure 17: Navigation



Figure 18: Misc.



Figure 19: Misc.



Figure 20: Misc.

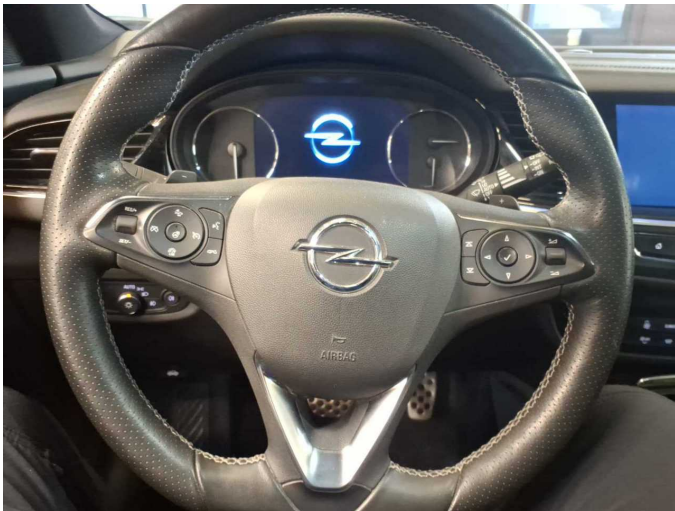


Figure 21: Misc.



Figure 22: Misc.



Figure 23: Misc.



Figure 24: Misc.



Figure 25: Misc.



Figure 26: Misc.

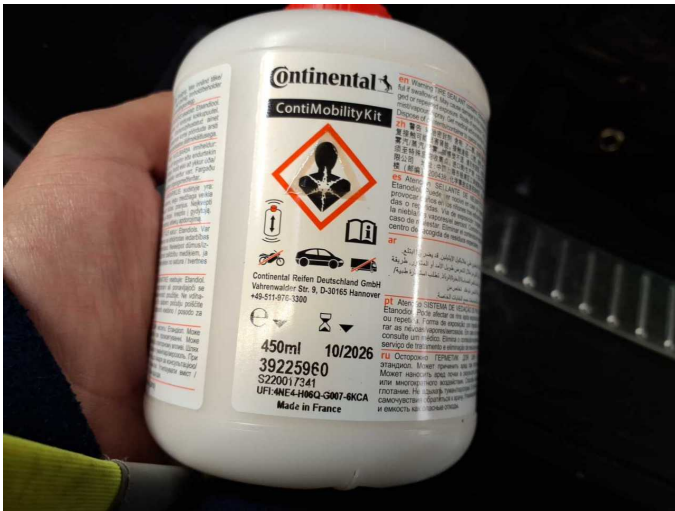


Figure 27: Misc.



Figure 28: Misc.



Figure 29: Misc.

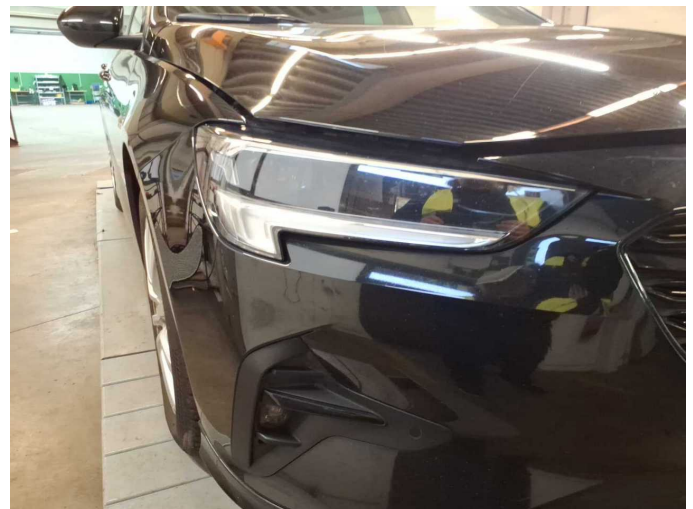


Figure 30: Misc.



Figure 31: Misc.



Figure 32: Misc.



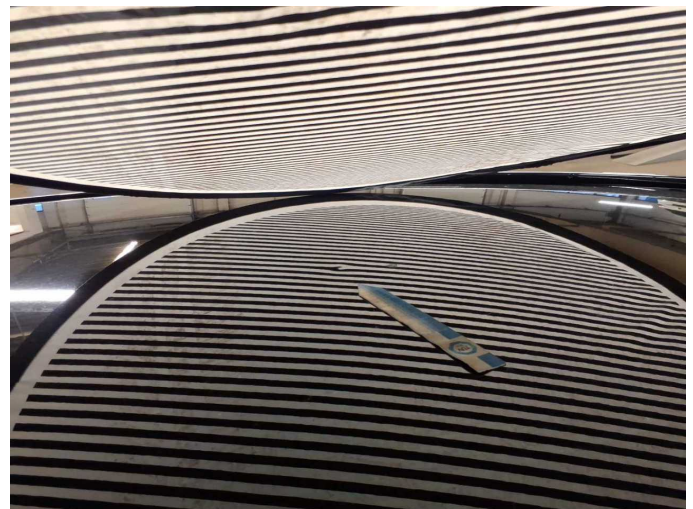
Figure 33: Misc.



Figure 34: Misc.



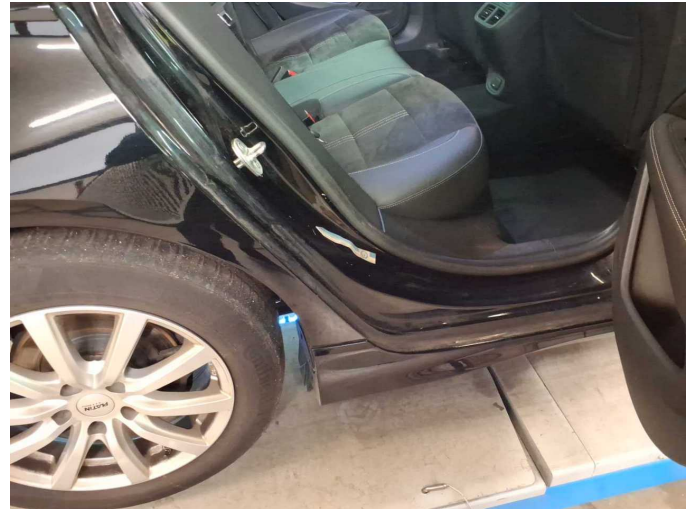
Figure 35: Misc.



Damage 2: Roof: Roof - dent(s) - Smooth repair work



Damage 2: Roof: Roof - dent(s) - Smooth repair work



Damage 3: Side panel - rear right side: Sill - Dent / paintcoat damage - Smart repair



Damage 3: Side panel - rear right side: Sill - Dent / paintcoat damage - Smart repair



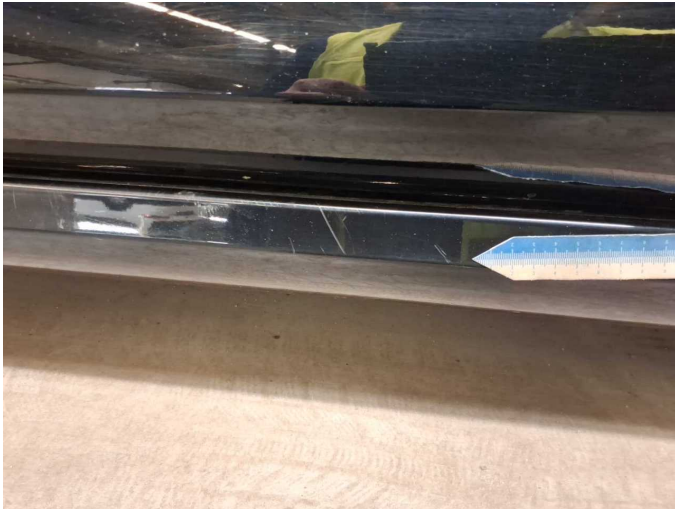
Damage 3: Side panel - rear right side: Sill - Dent / paintcoat damage - Smart repair



Damage 4: Side panel - rear left side: Sill - Scratched - Smart repair



Damage 4: Side panel - rear left side: Sill - Scratched - Smart repair



Damage 5: Sill - left side: Trim - Scratched - Smart repair



Damage 5: Sill - left side: Trim - Scratched - Smart repair



Damage 5: Sill - left side: Trim - Scratched - Smart repair



Damage 6: Sill - left side: Sill - Scratched - Smart repair



Damage 6: Sill - left side: Sill - Scratched - Smart repair



Damage 8: 2nd wheel set: 3 tyres (245 35 r 20 Sommer) - Broken / torn - Replace



Damage 8: 2nd wheel set: 3 tyres (245 35 r 20 Sommer) - Broken / torn - Replace



Damage 8: 2nd wheel set: 3 tyres (245 35 r 20 Sommer) - Broken / torn - Replace



Damage 8: 2nd wheel set: 3 tyres (245 35 r 20 Sommer) - Broken / torn - Replace



Damage 8: 2nd wheel set: 3 tyres (245 35 r 20 Sommer) - Broken / torn - Replace



Damage 8: 2nd wheel set: 3 tyres (245 35 r 20 Sommer) - Broken / torn - Replace



Damage 8: 2nd wheel set: 3 tyres (245 35 r 20 Sommer) - Broken / torn - Replace



Damage 9: Door - front left side: Door - Scratched - Paint



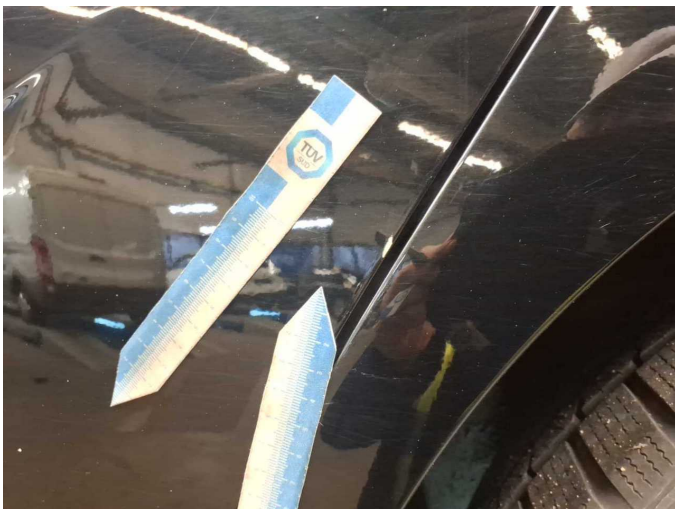
Damage 9: Door - front left side: Door - Scratched - Paint



Damage 9: Door - front left side: Door - Scratched - Paint



Damage 10: Door - rear left side: Door - Dent / paintcoat damage - Repair and paint



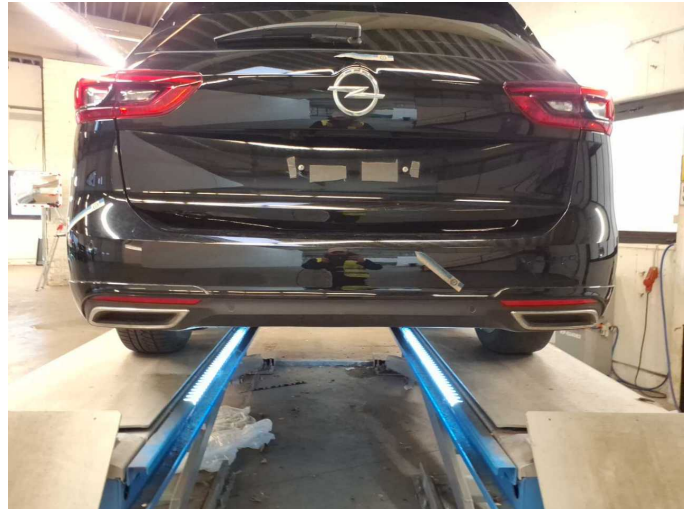
Damage 10: Door - rear left side: Door - Dent / paintcoat damage - Repair and paint



Damage 10: Door - rear left side: Door - Dent / paintcoat damage - Repair and paint



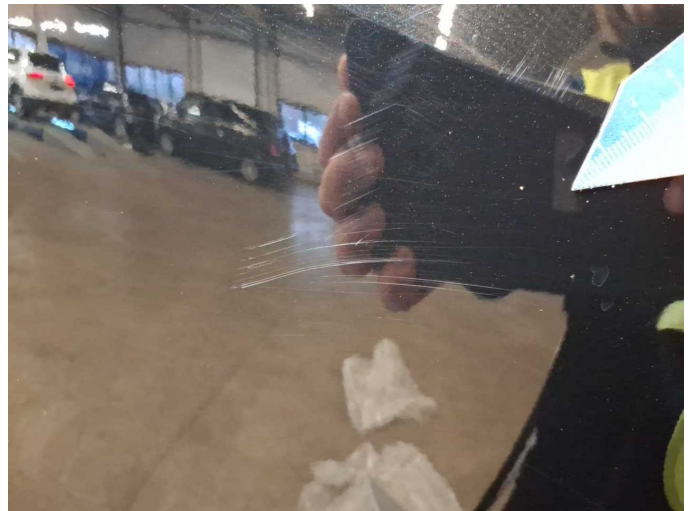
Damage 10: Door - rear left side: Door - Dent / paintcoat damage - Repair and paint



Damage 11: Rear bumper: Rear bumper - Scratched - Paint



Damage 11: Rear bumper: Rear bumper - Scratched - Paint



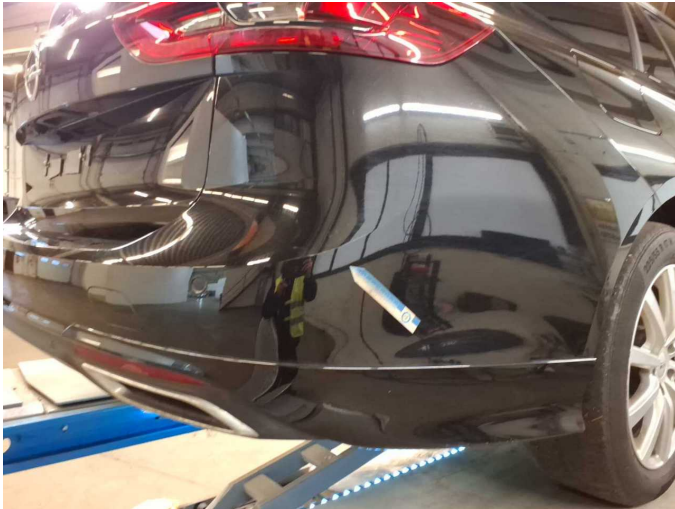
Damage 11: Rear bumper: Rear bumper - Scratched - Paint



Damage 11: Rear bumper: Rear bumper - Scratched - Paint



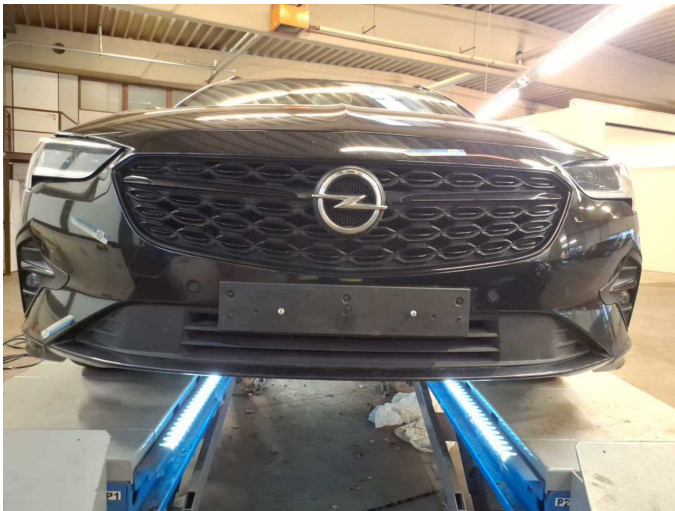
Damage 11: Rear bumper: Rear bumper - Scratched - Paint



Damage 11: Rear bumper: Rear bumper - Scratched - Paint



Damage 11: Rear bumper: Rear bumper - Scratched - Paint



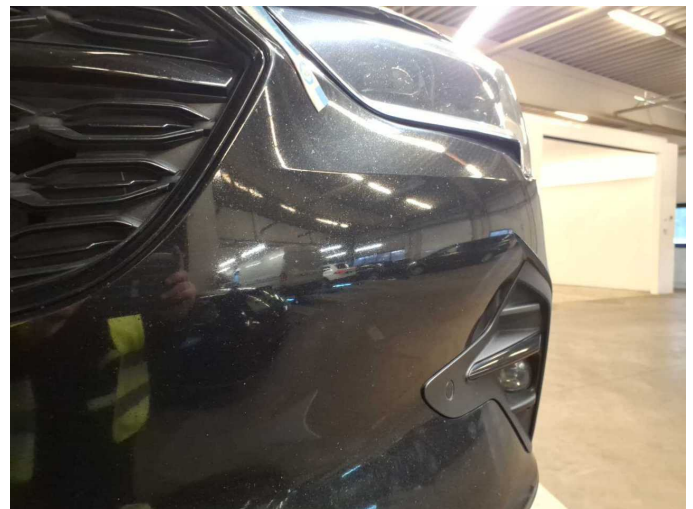
Damage 12: Front bumper: Front bumper - Stone chips - Paint



Damage 12: Front bumper: Front bumper - Stone chips - Paint



Damage 12: Front bumper: Front bumper - Stone chips - Paint



Damage 12: Front bumper: Front bumper - Stone chips - Paint



Damage 12: Front bumper: Front bumper - Stone chips - Paint



Damage 12: Front bumper: Front bumper - Stone chips - Paint



Damage 12: Front bumper: Front bumper - Stone chips - Paint



Damage 13: 2nd wheel set: 3 alloy rims (Materialabtrag) - Scratched - repair according to calculation



Damage 13: 2nd wheel set: 3 alloy rims (Materialabtrag) - Scratched - repair according to calculation



Damage 13: 2nd wheel set: 3 alloy rims (Materialabtrag) - Scratched - repair according to calculation



Damage 13: 2nd wheel set: 3 alloy rims (Materialabtrag) - Scratched - repair according to calculation



Damage 13: 2nd wheel set: 3 alloy rims (Materialabtrag) - Scratched - repair according to calculation



Damage 13: 2nd wheel set: 3 alloy rims (Materialabtrag) - Scratched - repair according to calculation



Damage 13: 2nd wheel set: 3 alloy rims (Materialabtrag) - Scratched - repair according to calculation



Damage 13: 2nd wheel set: 3 alloy rims (Materialabtrag) - Scratched - repair according to calculation



Damage 13: 2nd wheel set: 3 alloy rims (Materialabtrag) - Scratched - repair according to calculation



Damage 13: 2nd wheel set: 3 alloy rims (Materialabtrag) - Scratched - repair according to calculation



Damage 13: 2nd wheel set: 3 alloy rims (Materialabtrag) - Scratched - repair according to calculation



Wear and tear 1: Door - front right side: Door edge - Scratched - No deduction



Wear and tear 1: Door - front right side: Door edge - Scratched - No deduction



Wear and tear 2: Boot lid / rear door: Boot lid - dent(s) - Smooth repair work



Wear and tear 2: Boot lid / rear door: Boot lid - dent(s) - Smooth repair work



Wartungshistorie

(gemäß Auftraggeber Informationen)

Fahrgestellnummer: W0VZS8GP6N1044823

Hersteller / Modell: OPEL OPEL Insignia Sports Tourer 2.0 Diesel Aut. Ultimate

Datum	KM-Stand	Beschreibung
17.11.2025	125.396	Systemtest/Eigendiagnose
01.09.2025	115.590	Motoröl b. Wartung; Reparatur Sonstiges; Systemtest/Eigendiagnose; Turbolader ern
17.06.2025	115.590	Systemtest/Eigendiagnose
15.05.2025	114.948	Bremse Sonstiges; Bremsflüssigkeit; Bremsflüssigkeit ern; Bremsklötze hinten; Bremsklötze vorne; Bremsscheiben + Klötze h; Bremsscheiben + Klötze v; Bremsscheiben hinten; Bremsscheiben vorne; Motoröl b. Wartung; Ölfilter ern; Regelwartungsdienst; Wartung Sonstiges
19.12.2023	46.501	Bremsklötze hinten; Bremsklötze vorne; Motoröl b. Wartung; Ölfilter ern; Regelwartungsdienst; Wartung Sonstiges; Wartung Sonstiges