

Expertise

Protocol number: 46024216
Order No. / Reference: 26465908
Inspection date: 18 Jun 2026

Manufacturer: Volvo

Model: XC60 B4 D AWD Geartronic RDesign

VIN: YV1UZZK5UCN1963567



Vehicle details

Manufacturer / Type / Model / Equipment

Volvo XC60 B4 D AWD Geartronic RDesign

| | |
|---|--------------------|
| Vehicle Identification number | YV1UZZK5UCN1963567 |
| Mileage (Read) | 155,835 km |
| First registration | 10 Nov 2021 |
| Number of holders | 1 |
| Next periodical technical inspection (Report on hand) | 12/2026 |

| | |
|------------------------------------|-----------------------|
| Power / Engine displacement | 145 kw / 1,969 ccm |
| Fuel type / Cylinder | Hybrid Diesel / E / 4 |
| Gearbox / Number of gears | Automatic / 8 |
| Type of drive | All-wheel drive |
| Type of vehicle | SUV |

| | |
|-----------------------------|---------------------|
| Colour / colour code | Onyx Black Metallic |
| Doors / Seats | 5 / 5 |
| Upholstery type | Artificial leather |
| Colour of upholstery | Black |



Vehicle details

| | | | |
|--|------------------------------|--------------------------------|--|
| Maintenance booklet / proof | Available / complete | Next maintenance in | 295 Tag(e) |
| Last service on / at | 04/2026 at 155,616 km | | |
| Key is / should be | 2 / 2 | FZG documents | ZB#2 (B) was available (copy), ZB#1 (S) was not available. |
| | | Letter No. | GC690197 |
| Previous damage / Accident | None detectable | Repainting | None detectable |
| Inspection conditions | sufficient | Lifting equipment / pit | No |
| Test drive | Not performed | Engine function test | Performed |
| Manufacturer key number/ type code number | 9101 / BPQ 00022 | | |
| Emission standard | EURO6;WLTP;AP;PI/CI; M, N1 I | fine dust sticker | |
| Permitted total weight | 2,520 kg | Empty weight | |

Tyres

Mounted tyres

| # | Tyre size | Type of tyre | Manufacturer | Tread depth |
|----|-----------------|-----------------------------|--------------|-------------|
| 1) | 265/35 R22 102V | Summer tyres on Light alloy | Pirelli | 5mm / 5mm |
| 2) | 265/35 R22 102V | Summer tyres on Light alloy | Pirelli | 6mm / 6mm |

Additional tyres

| # | Tyre size | Type of tyre | Manufacturer | Tread depth |
|----|-----------------|-----------------------------|--------------|-------------|
| 1) | 235/60 R18 107H | Winter tyres on Light alloy | Pirelli | 7mm / 7mm |
| 2) | 235/60 R18 107H | Winter tyres on Light alloy | Goodyear | 7mm / 7mm |

Replacement

| Typ | Tyre size | Type of tyre | Manufacturer | Tread depth |
|-----|-----------|-------------------------|--------------|-------------|
| | Tirefit | Expiration date 10/2025 | | |

Legend: Tread depth information for the left tire is listed first, for the right tire it is listed second on the axle in the direction of travel.

TÜV SÜD Auto Partner GmbH
Wiesenring 2
04159 Leipzig

Inspection location
ARS Altmann AG Automobillogistik
Römerstraße 3
64560 Riedstadt



Equipment



Standard equipment

- ABS - Anti-lock Braking System
- Passenger side airbag can be deactivated
- Airbag, driver's knee airbag
- All-wheel drive (AWD)
- Ambient lighting
- Electrically folding exterior mirrors
- Outdoor temperature display
- Hill Descent Control (HDC)
- Fog sensor for automatic activation of the defroster function
- On-board computer
- CleanZone air quality system with activated carbon filter
- Roof edge spoiler
- Diesel particulate filter
- Drive Mode
- Rear parking assist with automatic braking intervention (rear)
- Electronic differential lock
- Window surround in high-gloss black
- Cruise control
- Google Services with navigation function
- Heated rear window
- Interior and exterior mirrors automatically dimming
- ISOFIX mounting for the outer rear seats
- Keyless Start
- Automatic climate control with separate temperature control for driver and front passenger
- Charging box under the cargo floor
- Cargo area roller blind
- LED headlights "Thor's Hammer" with high beam assist and integrated LED daytime running lights
- Steering wheel: Sports steering wheel
- Rear center armrest (foldable)
- Fog light
- Emergency brake lights
- Electric parking brake
- Radio: High Performance Sound audio system
- Radio accessories: Two USB-C ports on the back of the center console
- Run-off Road Protection
- Rear seats in a 40/60 split or completely foldable with pass-through function
- Safety braking system with disc brakes all around (internally ventilated)
- Seats: Driver and front passenger seats are height-adjustable (electrically)
- Seats: Lumbar support (4-way electrically adjustable) for driver and front passenger seats
- Sport front grille with horizontal struts and surround in high-gloss black
- Power socket
- Phone: Inductive smartphone charging system
- Driver and passenger side airbags with two-stage deployment system
- Airbag, side airbags for driver and front passenger and head/shoulder airbags (iC) for all occupants
- Android infotainment system
- Electrically adjustable and heated exterior mirrors, left and right
- Hill Start Assist (HSA)
- LED turn signals integrated into the exterior mirrors
- third brake light
- Anthracite headliner
- Roof rails in high-gloss black (integrated)
- Digital Instrumentation 2nd Gen.
- Aluminum insert, metal mesh
- Aluminum door sill plates with Volvo lettering at the front
- Electronic Stability Control (ESC)
- Electric windows front and rear
- Luggage compartment partition net
- Transmission: 8-speed Geartronic automatic transmission
- Automatic tailgate
- IDIS - Intelligent Driver Information System
- Interior lighting
- Keyless Drive
- Child safety lock (rear doors)
- Headrests (5) front and rear
- Rear headrests foldable
- Stainless steel loading sill protector in the luggage compartment
- Steering wheel adjustable for height and reach
- Steering wheel: Multifunction buttons on the steering wheel
- Illuminated makeup mirror for driver and front passenger
- Front center armrest with integrated storage compartment and cup holders
- Package: Winter Package
- Upholstery: Part-leather/mesh-textile sports seats
- Radio accessories: Digital radio reception (DAB+)
- Rain sensor
- Tire pressure monitoring system
- Wheels: Tire sealant
- Safety Assistance
- Speed-sensitive power steering
- Seat belts
- Seats: Adjustable (electric) leg rest for driver and front passenger seats
- Seats: Driver's seat electrically adjustable
- Sport exterior mirrors in high-gloss black
- Sport front and rear apron
- Sport pedals
- Start/Stop technology
- 12-volt socket at the front
- Textile floor mats: Sport textile floor mats front and rear
- Glazing: Colored glazing



- First aid kit and warning triangle
- Lashing eyes in the luggage compartment (foldable)
- Preparation for Trailer Stability Assist (TSA)
- WHIPS whiplash protection system

- Volvo On Call
- Immobiliser
- Central locking system with two remote controls and integrated emergency keys

Extra equipment

- Towbar (semi-electric)
- Paint finish: Metallic paint
- Package: Parking Assistance Package (front and rear parking aid - reversing camera)
- Package: Seat Comfort Package (Electrically adjustable passenger seat - memory function for passenger seat)
- Upholstery: Nappa leather/imitation leather comfort seats (perforated front seats) (with active ventilation and electrically adjustable side bolsters for driver and front passenger seats including rear center armrest)
- Wheels: 22" alloy wheels, 5-twin-spoke design, diamond cut/graphite look (tires 265/35 R22 with rims 9J x 22" - wheel arch extensions are fitted as standard when choosing the 22" wheels.)
- Glazing: Side and rear windows tinted (from the B-pillar back)
- Windscreen, heater
- Package: Lighting Package (LED fog lights (integrated into the front spoiler) - headlight cleaning system - full LED headlights "Thor's Hammer" Active High Beam with extended high beam, dynamic cornering lights, intelligent high beam assist with adaptive headlight range control and integrated LED daytime running lights)
- Radio: Audio system High Performance Sound Pro by Harman/ Kardon (600 watts of power - 14 speakers - Fresh Air - Subwoofer - Dirac Unison - Sound optimization)
- Protection package MJ22, retrofitted floor mats, boot mat
- Seats: Massage function for driver and front passenger seats
- Auxiliary heater with timer (fuel-operated)

Brief expert findings

| | |
|----------------------|---|
| Documents submitted | At the time of the inspection, the vehicle registration certificate Part 2 (title) was available, but the vehicle registration certificate Part 1 (document) was not. (Copy) |
| VIN comparison | The vehicle identification number (VIN) was read from the vehicle and its conformity with the submitted documents was confirmed by the undersigned during the inspection. |
| Inspection | The inspection conditions were sufficient for the assessment of the vehicle. No lifting equipment or pit was available for inspecting the vehicle. Therefore, inspection of the vehicle's underside was only possible to a limited extent. |
| Test drive | No test drive/shunting maneuver was carried out during the inspection of the vehicle. |
| Engine function test | An engine test run was performed. |

Value reducing factors

| No. | Component group | Description |
|-----|----------------------|--|
| 1 | Equipment | Tirefit filler - Expired - Replace |
| 2 | Boot lid / rear door | Boot lid - Glued / labelled - De-glude / neutralise |
| 3 | Front bumper | Cover bumper - front - Scratch(es) - Smart repair |
| 4 | Wheel / tyres | Alloy rim - rear right side - Scratch(es) - Loss in value |
| 5 | Wheel / tyres | Alloy rim - front left side - Scratch(es) - Loss in value |
| 6 | Wheel / tyres | Alloy rim - front right side - Scratch(es) - Loss in value |
| 7 | Vehicle glazing | Windscreen - Stone chips - Replace |

Wear and tear

| No. | Component group | Description |
|-----|------------------|---|
| 1 | Bonnet | Bonnet - Stone chips - No deduction |
| 2 | Rear bumper | Rear bumper - Scratch(es) - No deduction |
| 3 | Sill - left side | Sill - Scratch(es) - No deduction |
| 4 | Front bumper | Front bumper - Stone chips - No deduction |

The vehicle shows signs of wear and tear commensurate with its age and use.



Order/Scope of Order

An order was placed to prepare a sales report for the described vehicle. This report includes the following:

- Description of key vehicle information
- Documentation of equipment features
(Delivery by third-party service providers)
- Documentation of damage, defects, missing parts
- Documentation of prior damage, unrepaired prior damage, repainting
- A brief visual or functional inspection of the equipment details, if possible.
(Functional testing of driver assistance systems is not included in the scope of services!)
- a photographic documentation of the vehicle

Basis for the order

This product is based on the guidelines for vehicle returns and valuations published by Alphabet Fleet GmbH. The expert makes the specific findings in each individual case objectively, within the framework of the prescribed standards, based on their own expertise.

The vehicle inspection takes place in a fully assembled, unassembled state.

Damage or defects that can only be detected during disassembly/diagnostic work or through further investigation remain within the realm of prognostic risk. An increased risk exists due to concealed defects caused by fraudulent misrepresentation and which were not identifiable by the expert.

Damage or defects resulting from normal use or wear and tear of the vehicle will be accepted in accordance with the applicable standard.

There was no explicit identification or monetary consideration of the expected features within the product.

Features which, in their nature and extent, slightly exceed normal use but do not constitute unacceptable damage, will be documented and indicated as signs of wear, if applicable.

Damage or defects that, according to the applicable standard, can no longer be attributed to normal use or wear and tear are listed under "Value Reducing Factors" in the product description.

Depending on the product specification, a monetary ID can be provided. If this takes place, the costs can be 100% or pro rata depending on the vehicle's age and mileage.

Previous damages

No apparent prior damage that had been repaired could be found on the vehicle.

Comments

- Die Unterbodenbesichtigung war nur ebenerdig und eingeschränkt möglich.
- Mehrkosten möglich .

- Winterradsatz ist kein Bestandteil des Auslieferungsumfangs.



Figure 1: Diagonal front (left)



Figure 2: Diagonal front (right)



Figure 3: Diagonal rear (left)



Figure 4: Diagonal rear (right)



Figure 5: Interior - front



Figure 6: Interior - rear



Figure 7: Instrument cluster



Figure 8: Instrument panel



Figure 9: Interior 360° view



Figure 10: Cargo area



Figure 11: VIN



Figure 12: Mounted tyres



Figure 13: Documents

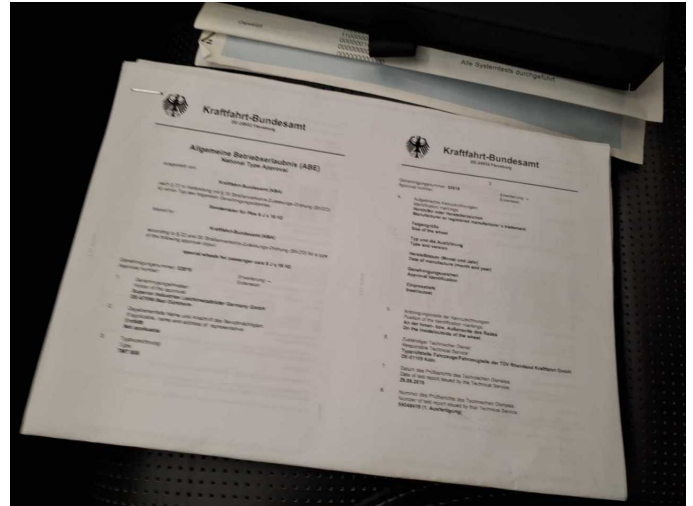


Figure 14: Documents

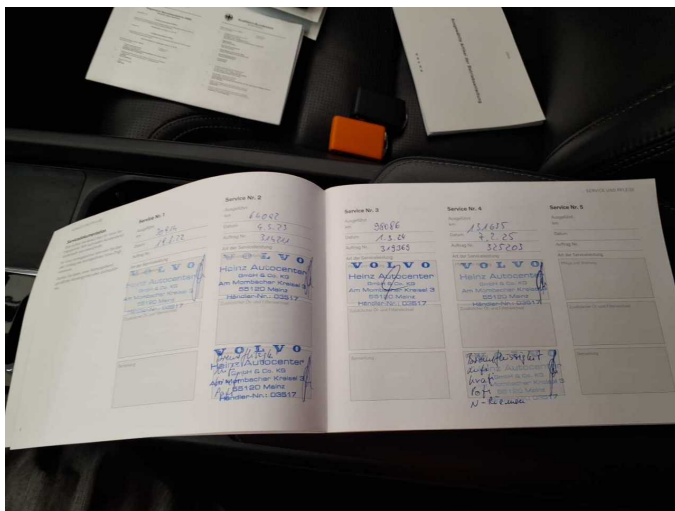


Figure 15: Documents



Figure 16: Documents

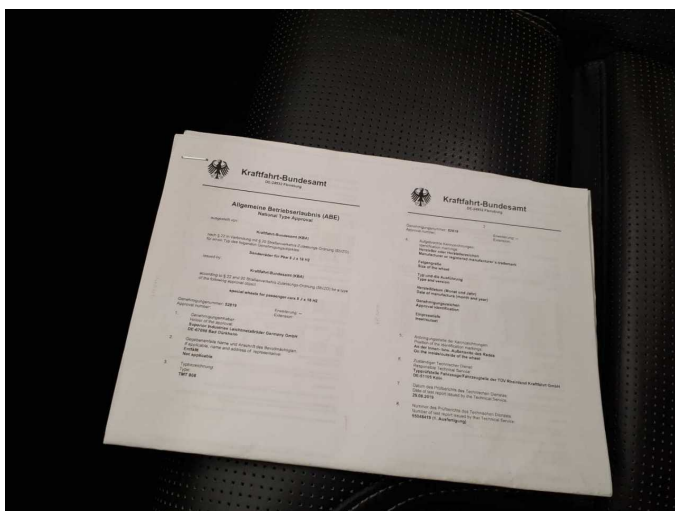


Figure 17: Documents



Figure 18: Documents

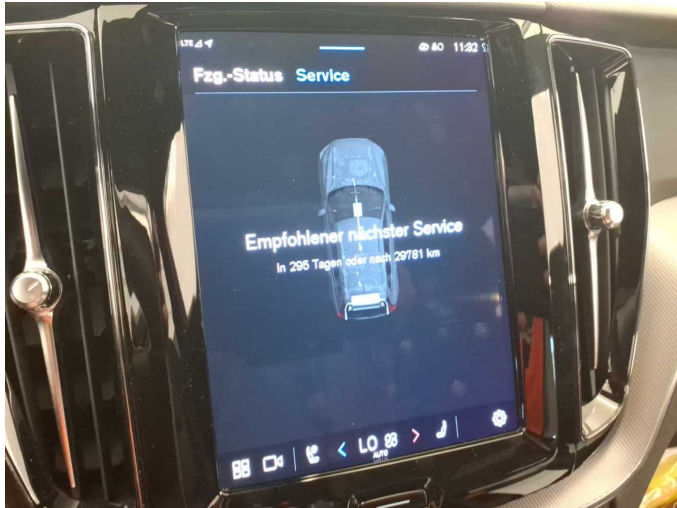


Figure 19: Documents



Figure 20: Additional tyres

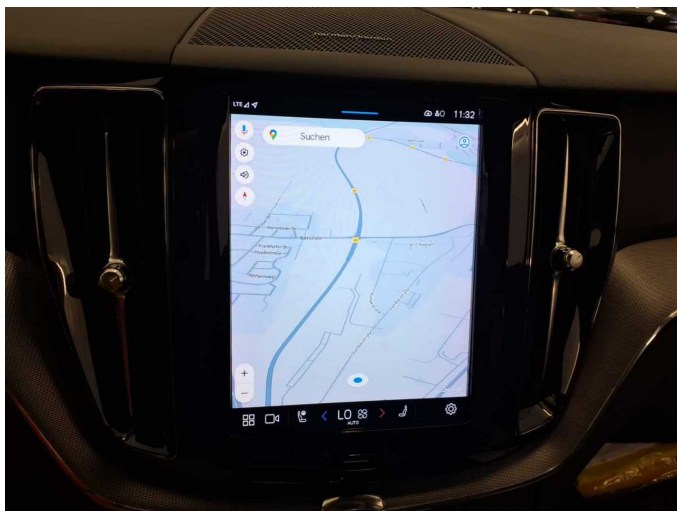


Figure 21: Navigation



Figure 22: Misc.



Figure 23: Misc.

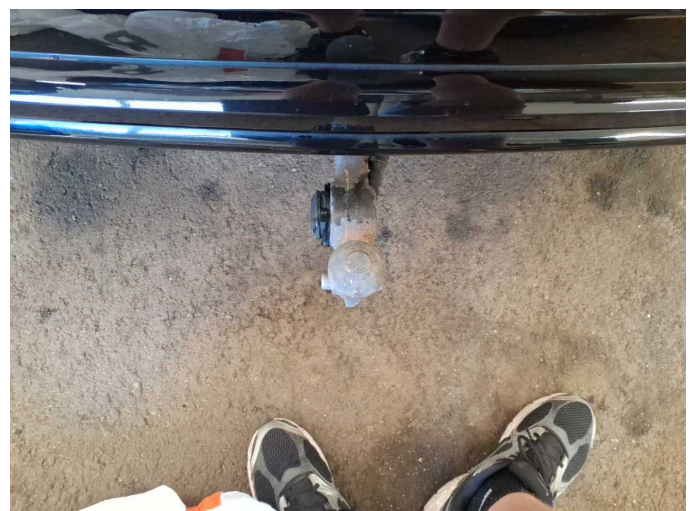


Figure 24: Misc.



Figure 25: Misc.



Figure 26: Misc.



Figure 27: Misc.



Figure 28: Misc.



Figure 29: Misc.



Figure 30: Misc.



Figure 31: Misc.



Figure 32: Misc.



Figure 33: Misc.



Figure 34: Misc.



Figure 35: Misc.



Figure 36: Misc.



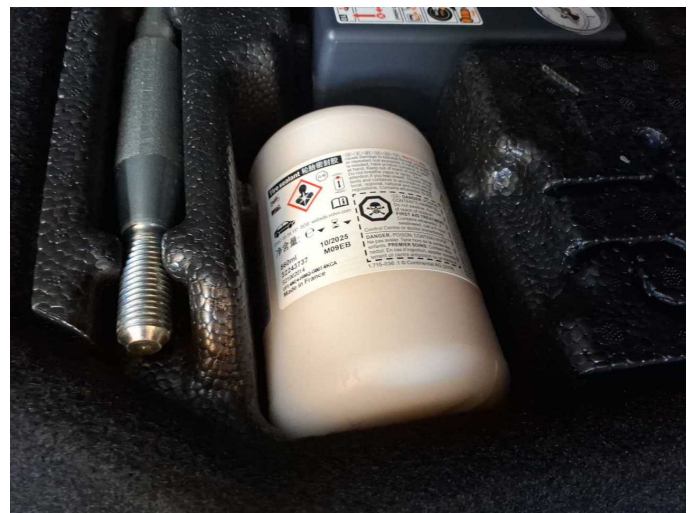
Figure 37: Misc.



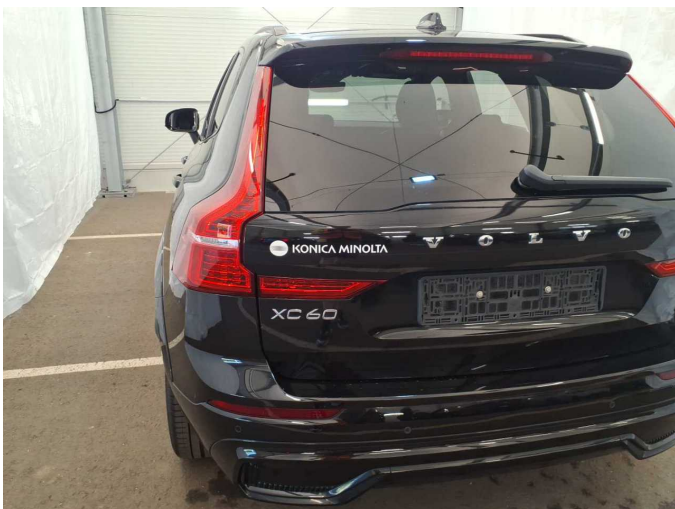
Figure 38: Misc.



Figure 39: Misc.



Damage 1: Equipment: Tirefit filler - Expired - Replace



Damage 2: Boot lid / rear door: Boot lid - Glued / labelled - De-glue / neutralise



Damage 3: Front bumper: Cover bumper - front - Scratch(es) - Smart repair



Damage 3: Front bumper: Cover bumper - front - Scratch(es) - Smart repair



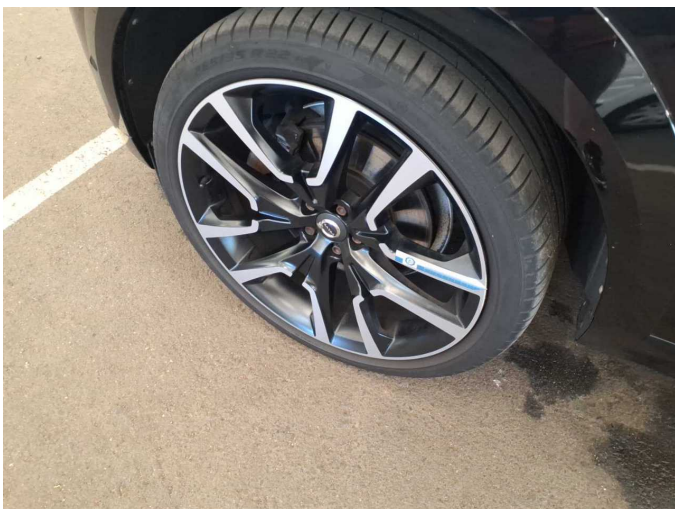
Damage 4: Wheel / tyres: Alloy rim - rear right side - Scratch(es) - Loss in value



Damage 4: Wheel / tyres: Alloy rim - rear right side - Scratch(es) - Loss in value



Damage 5: Wheel / tyres: Alloy rim - front left side - Scratch(es) - Loss in value



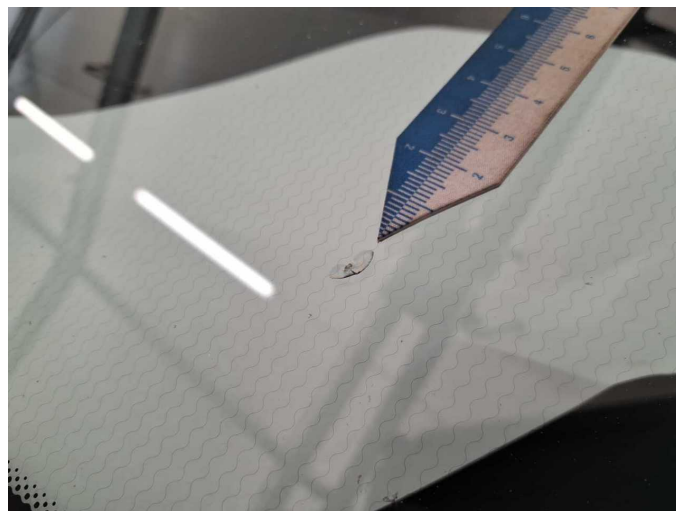
Damage 5: Wheel / tyres: Alloy rim - front left side - Scratch(es) - Loss in value



Damage 6: Wheel / tyres: Alloy rim - front right side - Scratch(es) - Loss in value



Damage 6: Wheel / tyres: Alloy rim - front right side - Scratch(es) - Loss in value



Damage 7: Vehicle glazing: Windscreen - Stone chips - Replace



Damage 7: Vehicle glazing: Windscreen - Stone chips - Replace



Wartungshistorie

(gemäß Auftraggeber Informationen)

Fahrgestellnummer: YV1UZZK5UCN1963567
Hersteller / Modell: VOLVO VOLVO XC60 B4 D AWD Geartronic RDesign

| Datum | KM-Stand | Beschreibung |
|------------|----------|---|
| 17.04.2026 | 155.616 | Motoröl b. Wartung; Ölfilter ern; Regelwartungsdienst; Reparatur Sonstiges; Wartung Sonstiges |
| 16.04.2026 | 155.616 | Motor ern; Reparatur Sonstiges; Systemtest/Eigendiagnose; Turbolader ern |
| 07.02.2025 | 131.635 | Bremsflüssigkeit; Bremsflüssigkeit ern; Bremsklötze hinten; Bremsklötze vorne; Keilrippenriemen; Kraftstofffilter ern; Luftfiltereinsatz ern; Motoröl b. Wartung; Ölfilter ern; Regelwartungsdienst; Reparatur Sonstiges; Wartung Sonstiges |
| 23.12.2024 | 98.086 | HU + AU |
| 04.03.2024 | 98.086 | Motoröl b. Wartung; Ölfilter ern; Regelwartungsdienst; Reparatur Sonstiges; Wartung Sonstiges |
| 09.05.2023 | 64.092 | Bremsflüssigkeit; Kraftstofffilter ern; Luftfiltereinsatz ern; Motoröl b. Wartung; Ölfilter ern; Regelwartungsdienst; Reparatur Sonstiges; Wartung Sonstiges |
| 16.08.2022 | 30.914 | Motoröl b. Wartung; Ölfilter ern; Regelwartungsdienst; Wartung Sonstiges |