

Expertise

Protocol number: 45868824
Order No. / Reference: 26471213
Inspection date: 9 Jun 2026

Manufacturer: Mercedes-Benz

Model: C 200 d 9G-TRONIC Avantgarde

VIN: W1KAF0DB2PR080394



Vehicle details

Manufacturer / Type / Model / Equipment

Mercedes-Benz C 200 d 9G-TRONIC Avantgarde

Vehicle Identification number W1KAF0DB2PR080394

Mileage (Read) 66,845 km

First registration 9 May 2023

Number of holders 1

Power / Engine displacement 120 kw / 1,993 ccm

Fuel type / Cylinder Hybrid Diesel / E / 4

Gearbox / Number of gears Automatic / 9

Type of drive Rear drive

Type of vehicle Saloon car

Colour / colour code POLARWEISS - UNILACK

Doors / Seats 4 / 5

Upholstery type Artificial leather

Colour of upholstery Black



Vehicle details

Maintenance booklet / proof	digital proof / complete	Next maintenance in	86 Tag(e)
Last service on / at	06/2025 at 52,407 km		
Key is / should be	1 / 2	FZG documents	ZB#2 (B) was available (copy), ZB#1 (S) was not available.
		Letter No.	GM972155
Previous damage / Accident	Detectable	Repainting	Detectable
Inspection conditions	sufficient	Lifting equipment / pit	yes
Test drive	Not performed	Engine function test	Performed
Manufacturer key number/ type code number	2222 / BDA 00155		
Emission standard	EURO6;WLTP;AP;PI/CI; M, N1 I	fine dust sticker	
Permitted total weight	2,350 kg	Empty weight	

Tyres

Mounted tyres

#	Tyre size	Type of tyre	Manufacturer	Tread depth
1)	225/50 R17 98H	Winter tyres on Light alloy	Pirelli	5mm / 5mm
2)	225/50 R17 98H	Winter tyres on Light alloy	Pirelli	5mm / 5mm

Additional tyres

#	Tyre size	Type of tyre	Manufacturer	Tread depth
1)	225/50 R17 94Y	Summer tyres on Light alloy	Bridgestone	5mm / 5mm
2)	225/50 R17 94Y	Summer tyres on Light alloy	Bridgestone	6mm / 6mm

Legend: Tread depth information for the left tire is listed first, for the right tire it is listed second on the axle in the direction of travel.



Equipment

Standard equipment

- Airbag for driver and front passenger
 - Airbag: Center airbag
 - Airbag: Windowbag for driver and front passenger
 - Left and right exterior mirrors are heated and electrically adjustable
 - Diesel particulate filter
 - DYNAMIC SELECT
 - Electronic Stability Program (ESP)
 - Velour floor mats
 - Transmission: 9-speed automatic, 9G-TRONIC
 - Interior headliner fabric crystal grey
 - Lower section of the instrument panel in black or macchiato beige with contrasting decorative stitching
 - Mechanical child safety lock for the rear doors
 - Rear headrests (3)
 - LED High Performance Headlights
 - Mercedes-Benz emergency call system
 - Center console in high-gloss black
 - Package: AVANTGARDE Exterior
 - Upholstery: ARTICO leatherette/fabric
 - Radio: MBUX
 - Radio accessories: Communication module (LTE) for using Mercedes me connect services
 - Remote Services Plus
 - Seats: Rear seat backrests foldable
 - Cruise control
 - Electronic immobilizer
 - Decorative elements in diamond pattern, silver-grey
- Airbag: Automatic passenger airbag deactivation
 - Airbag: Side airbag for driver and front passenger
 - Ambient lighting with 64 light colors
 - Basic services
 - Brake assist, active
 - Double cup holder at the front
 - ECO start/stop function
 - Electric windows (4-way)
 - Speed Limit Assistant
 - Rear bumper in body color
 - Instrument panel upper section in black
 - ISOFIX child seat attachment with top tether in the rear
 - KEYLESS-GO start function
 - THERMATIC automatic climate control with 1 climate zone
 - Front headrests
 - Steering wheel: Multifunction sports steering wheel in leather
 - Package: Storage
 - Package: Interior lighting package
 - Radio: Extended MBUX functions
 - Radio accessories: Digital radio (DAB)
 - Radio accessories: Central display
 - Tire pressure monitoring system (TPMS)
 - Windscreen wipers with rain sensor
 - Lane Keeping Assist, active
 - High-visibility vest for drivers
 - Central locking with remote control



Extra equipment

- Black fabric headliner
- Comfort closing of the trunk lid (Convenient operation at the touch of a button: You can easily open and close the trunk lid by pressing a button in the driver's door, on the trunk lid or on the vehicle key.)
- Fuel tank with larger capacity
- Paint finish: Solid special paint
- Steering wheel: Steering wheel heating
- Package: Advanced Comfort Package (Heated seats for driver and front passenger - Seat Comfort Package: - Numerous electric and manual adjustment options for the front seats to adapt to the specific body and comfort requirements of the driver and front passenger - Electro-pneumatic 4-way lumbar support and lateral support adjustment with control element on the seat - Electric seat cushion tilt adjustment - Electric height adjustment - Electric backrest adjustment - Electric seat cushion depth adjustment - Mechanical longitudinal adjustment - Mechanical headrest adjustment)
- Package: Infotainment package (MBUX Navigation Premium (hard drive navigation, pre-installation for Live Traffic Information), traffic sign assistant, smartphone integration (connects the mobile phone wirelessly to the multimedia system via Apple CarPlay and Android Auto), wireless charging system for mobile devices in the front)
- Package: Night (with Avantgarde exterior) (Radiator grille: louvers in high-gloss black and trim in glossy chrome (17") 5-spoke design light-alloy wheels, black painted and diamond-turned, with 225/50 R17 tires on 7Jx17 ET44, 5 front apron with trim (wing) in high-gloss black rear bumper with trim (wing) in high-gloss black beltline trim and window surrounds in high-gloss black exterior mirror housings painted in high-gloss black heat-insulating dark tinted glass in the rear (from the B-pillar))
- Package: Mirror package (both exterior mirrors electrically folding (button in the driver's door control panel) - interior mirror and exterior mirror on the driver's side automatically dimming continuously - ambient lighting of the exterior mirror to illuminate the entry area with projection of the Mercedes-Benz logo)
- Wheels: Complete summer wheel sets fitted at the factory
- Heat and noise insulating acoustic glass (for windshield and front doors)
- Heat-insulating dark tinted glass
- THERMATIC automatic climate control with 2 climate zones (control via the central display or the climate control unit in the center console; sensor system for detecting, for example, indoor/outdoor temperature, sunlight, humidity, and dew point; automatic recirculation (only in conjunction with navigation system); ventilation system consisting of: 3 center vents and 2 side vents; fine dust activated carbon filter for filtering dust, soot, and pollen; dew point sensor; residual heat function for efficient use of engine waste heat)
- Package: Business (Avant. or AMG Line Ext) DB2
- Package: Driving Assistance (Active Distance Assist DISTRONIC, Active Speed Limit Assist, Extended Automatic Restart on Highways, Route-Based Speed Adaptation with Traffic Jam End Function, Active Traffic Jam Assist, Active Steering Assist, Active Lane Change Assist, Active Emergency Stop Assist, Emergency Lane Function, Active Brake Assist with Vehicle, Bicycle and Pedestrian Detection; Intersection Function, Turn Function, Traffic Jam End Emergency Braking Function, Evasive Steering Assist, Active Lane Keeping Assist, Active Blind Spot Assist, Exit Warning Function)
- Package: Light (Adaptive Highbeam Assist - automatic switching of the high beams, camera on the inside of the windshield, detects oncoming and preceding illuminated vehicles, activated by pressing the steering wheel control lever to the high beam position)
- Package: Parking (12 ultrasonic sensors - reversing camera - Active Parking Assist with PARKTRONIC: detects free parking spaces, assisted parking, visual and acoustic warning, display of camera and ultrasonic data in the media display - Cross traffic warning: can provide visual and acoustic warnings when reversing out of a parking space and, if necessary, automatically initiate emergency braking - Reverse maneuvering brake: can trigger a braking process - Drive-away assist)
- Upholstery: ARTICO man-made leather
- Wheels: 43.2 cm (17") light alloy wheels in 5-spoke design (black painted and polished with 225/50 R 17 on 7 J x 17 ET 44.5)
- Wheels: Winter complete set of M+S wheels, 4-way 43.2 cm (17") light alloy wheels with 10-twin-spoke design (vanadium silver painted with 225/50 R 17 on 7 J x 17 ET 44, 5.)

Brief expert findings

Documents submitted	At the time of the inspection, the vehicle registration certificate Part 2 (title) was available, but the vehicle registration certificate Part 1 (document) was not. (Copy)
VIN comparison	The vehicle identification number (VIN) was read from the vehicle and its conformity with the submitted documents was confirmed by the undersigned during the inspection.
Inspection	The inspection conditions were sufficient for the assessment of the vehicle. Lifting equipment and/or a pit were available for examining the vehicle.
Test drive	No test drive/shunting maneuver was carried out during the inspection of the vehicle.
Engine function test	An engine test run was performed.



Value reducing factors

No.	Component group	Description
1	Door - front right side	Door - dent(s) - Smooth repair work
2	Wheel / tyres	Tyre - front right side (Flanke) - Damaged - Replace
3	2nd wheel set	1 tyre (Flanke) - Damaged - Replace
4	Wheel / tyres	Alloy rim - front right side - Scratch(es) - Loss in value
5	2nd wheel set	1 alloy rim (Materialabtrag) - Scratched - Replace

Wear and tear

No.	Component group	Description
1	Misc.	Main inspection - No evidence - No deduction
2	Rear bumper	Rear bumper - Scratch(es) - No deduction

The vehicle shows signs of wear and tear commensurate with its age and use.

Missing parts

Description

2nd wheel set - Wheel cover set - complete
Equipment - Vehicle key with remote control

Previous damages

No.	Previous damage	Extent of damage (Net)
1	Front, Side - left, Underbody, Provided by user / customer, from 6 Nov 2023	5.419,41 €

Repainting

No.	Repainting
1	Bonnet, Professionally carried out, Invoice of repair done Non-existent
2	Door - front left side, Professionally carried out, Invoice of repair done Non-existent

Paint coat thickness measurement

Bonnet	178 µm	Door - front left side	170 µm
--------	--------	------------------------	--------

Order/Scope of Order

An order was placed to prepare a sales report for the described vehicle. This report includes the following:

- Description of key vehicle information
- Documentation of equipment features
(Delivery by third-party service providers)
- Documentation of damage, defects, missing parts
- Documentation of prior damage, unrepaired prior damage, repainting
- A brief visual or functional inspection of the equipment details, if possible.
(Functional testing of driver assistance systems is not included in the scope of services!)
- a photographic documentation of the vehicle



Basis for the order

This product is based on the guidelines for vehicle returns and valuations published by Alphabet Fleet GmbH. The expert makes the specific findings in each individual case objectively, within the framework of the prescribed standards, based on their own expertise.

The vehicle inspection takes place in a fully assembled, unassembled state.

Damage or defects that can only be detected during disassembly/diagnostic work or through further investigation remain within the realm of prognostic risk. An increased risk exists due to concealed defects caused by fraudulent misrepresentation and which were not identifiable by the expert.

Damage or defects resulting from normal use or wear and tear of the vehicle will be accepted in accordance with the applicable standard.

There was no explicit identification or monetary consideration of the expected features within the product.

Features which, in their nature and extent, slightly exceed normal use but do not constitute unacceptable damage, will be documented and indicated as signs of wear, if applicable.

Damage or defects that, according to the applicable standard, can no longer be attributed to normal use or wear and tear are listed under "Value Reducing Factors" in the product description.

Depending on the product specification, a monetary ID can be provided. If this takes place, the costs can be 100% d or pro rata depending on the vehicle's age and mileage.

Previous damages

According to available information previous damages were repaired at the vehicle. Traces of repairs, which allow conclusions about the area of repair, were not recognizable during the inspection.



ALPHABET

Figure 1: Diagonal front (left)



ALPHABET

Figure 2: Diagonal front (right)



ALPHABET

Figure 3: Diagonal rear (left)



ALPHABET

Figure 4: Diagonal rear (right)



Figure 5: Interior - front



Figure 6: Interior - rear



Figure 7: Instrument cluster



Figure 8: Instrument panel



Figure 9: Interior 360° view



Figure 10: Cargo area



Figure 11: VIN



Figure 12: Mounted tyres



Figure 13: Documents



Figure 14: Additional tyres

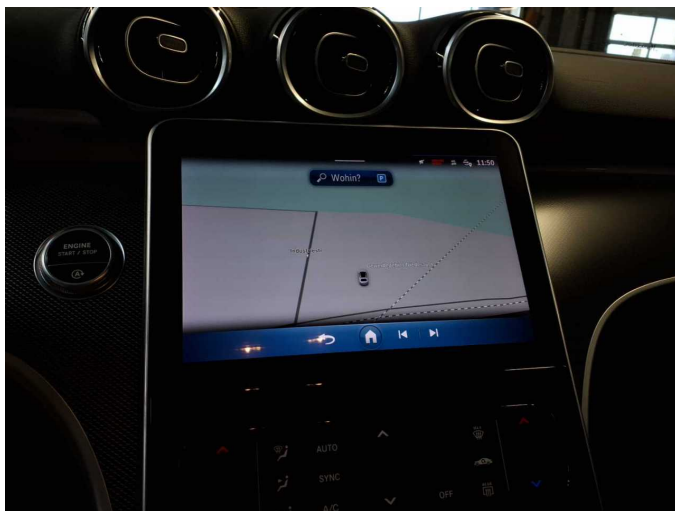


Figure 15: Navigation



Figure 16: Misc.



Figure 17: Misc.



Figure 18: Misc.



Figure 19: Misc.



Figure 20: Misc.



Figure 21: Misc.

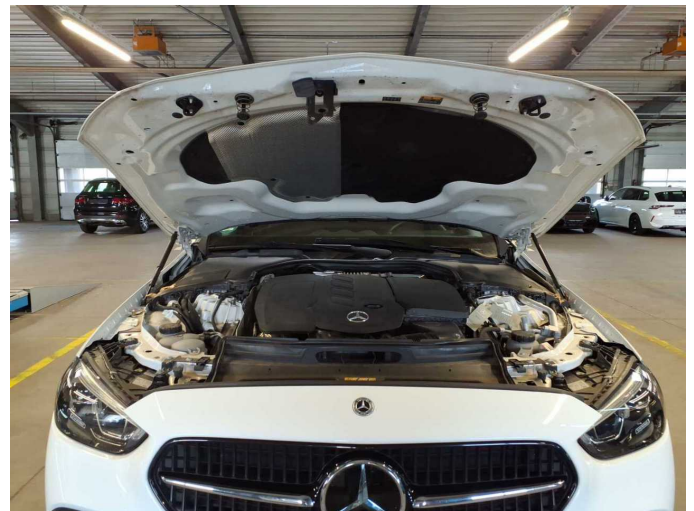


Figure 22: Misc.



Figure 23: Misc.



Figure 24: Misc.



Figure 25: Misc.



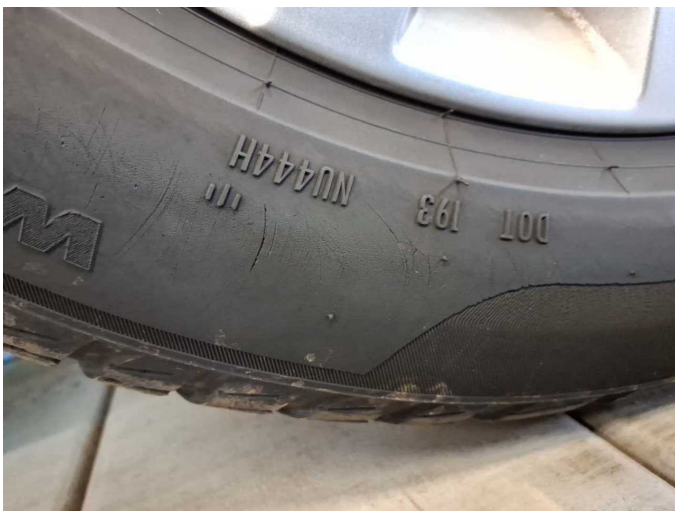
Damage 1: Door - front right side: Door - dent(s) - Smooth repair work



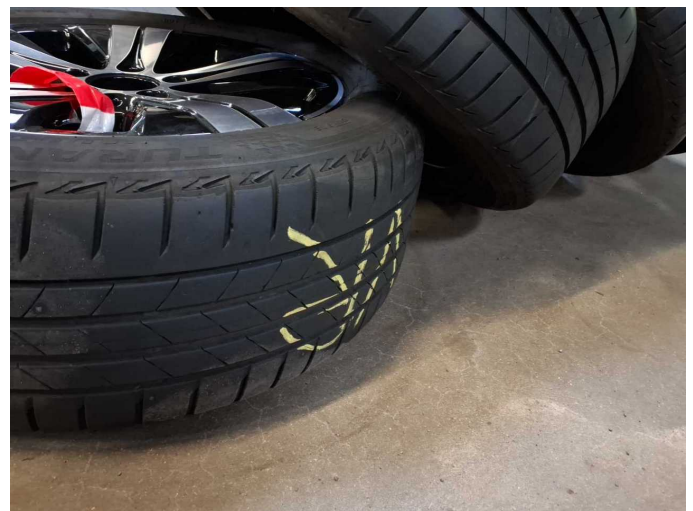
Damage 1: Door - front right side: Door - dent(s) - Smooth repair work



Damage 2: Wheel / tyres: Tyre - front right side (Flanke) - Damaged - Replace



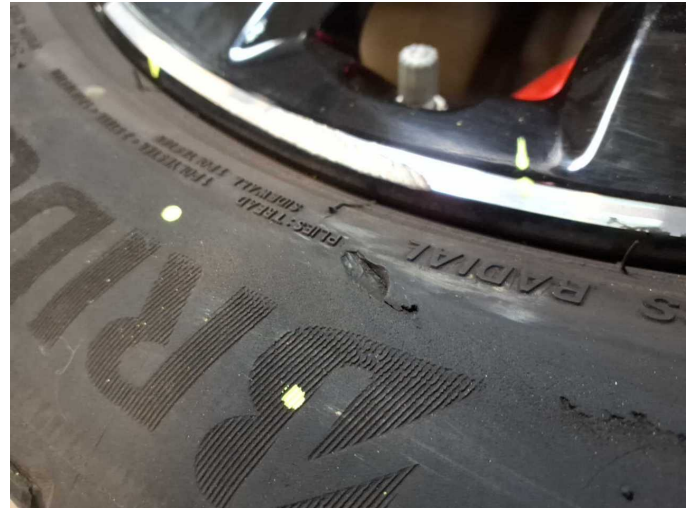
Damage 2: Wheel / tyres: Tyre - front right side (Flanke) - Damaged - Replace



Damage 3: 2nd wheel set: 1 tyre (Flanke) - Damaged - Replace



Damage 3: 2nd wheel set: 1 tyre (Flanke) - Damaged - Replace



Damage 3: 2nd wheel set: 1 tyre (Flanke) - Damaged - Replace



Damage 4: Wheel / tyres: Alloy rim - front right side - Scratch(es) - Loss in value



Damage 4: Wheel / tyres: Alloy rim - front right side - Scratch(es) - Loss in value



Damage 5: 2nd wheel set: 1 alloy rim (Materialabtrag) - Scratched - Replace



Damage 5: 2nd wheel set: 1 alloy rim (Materialabtrag) - Scratched - Replace



Damage 5: 2nd wheel set: 1 alloy rim (Materialabtrag) - Scratched - Replace



Missing part 1: 2nd wheel set: Wheel cover set - complete - Missing - Replace



Missing part 1: 2nd wheel set: Wheel cover set - complete - Missing - Replace



Missing part 2: Equipment: Vehicle key with remote control - Missing - Replace



Missing part 2: Equipment: Vehicle key with remote control - Missing - Replace



Repainting 1: Bonnet



Repainting 2: Door - front left side



Wartungshistorie

(gemäß Auftraggeber Informationen)

Fahrgestellnummer: W1KAF0DB2PR080394

Hersteller / Modell: MERCEDES-BENZ MB C 200 d 9G-TRONIC Avantgarde

Datum	KM-Stand	Beschreibung
18.03.2026	62.564	Luftfiltereinsatz ern; Systemtest/Eigendiagnose; Wasserpumpe ern
16.02.2026	61.680	Systemtest/Eigendiagnose
20.06.2025	52.407	Regelwartungsdienst
22.04.2024	26.199	Regelwartungsdienst