

## Expertise

Protocol number: 45791378  
Order No. / Reference: 26402873  
Inspection date: 3 Jun 2026

Manufacturer: Opel

Model: Astra Sports Tourer 1.2 Turbo Automatik GS

VIN: VXKFRHNS7S1016411



### Vehicle details

#### Manufacturer / Type / Model / Equipment

Opel Astra Sports Tourer 1.2 Turbo Automatik GS

**Vehicle Identification number** VXKFRHNS7S1016411

**Mileage (Read)** 9,818 km

**First registration** 16 Apr 2025

**Number of holders** 1

**Power / Engine displacement** 96 kw / 1,199 ccm

**Fuel type / Cylinder** Petrol / 3

**Gearbox / Number of gears** Automatic / 8

**Type of drive** Front drive

**Type of vehicle** Station wagon

**Colour / colour code** Blue Metallic

**Doors / Seats** 5 / 5

**Upholstery type** Cloth / leather combination

**Colour of upholstery** Black-Anthracite

**Vehicle with smoke odor** no



## Vehicle details

<b>Maintenance booklet / proof</b>	Available / complete	<b>Next maintenance in</b>	11 Monat(e)
<b>Last service on / at</b>	04/2026 at 9,769 km		
<b>Key is / should be</b>	2 / 2	<b>FZG documents</b>	ZB#2 (B) was available (copy), ZB#1 (S) was not available.
		<b>Letter No.</b>	HG572080
<b>Previous damage / Accident</b>	None detectable	<b>Repainting</b>	None detectable
<b>Inspection conditions</b>	sufficient	<b>Lifting equipment / pit</b>	yes
<b>Test drive</b>	Not performed	<b>Engine function test</b>	Performed
<b>Manufacturer key number/ type code number</b>	2525 / ACA 00068		
<b>Emission standard</b>	EURO6;WLTP;EA;PI/CI;M, N1, N2	<b>fine dust sticker</b>	
<b>Permitted total weight</b>	1,900 kg	<b>Empty weight</b>	

## Tyres

### Mounted tyres

#	Tyre size	Type of tyre	Manufacturer	Tread depth
1)	205/55 R16 94V	All-season tyres on Light alloy	Goodyear	6mm / 6mm
2)	205/55 R16 94V	All-season tyres on Light alloy	Goodyear	7mm / 7mm

### Replacement

Typ	Tyre size	Type of tyre	Manufacturer	Tread depth
Tirefit		Expiration date 07/2029		

**Legend: Tread depth information for the left tire is listed first, for the right tire it is listed second on the axle in the direction of travel.**



## Equipment

### Standard equipment

- 360 degree camera Intelli-Vision
- Airbag: Chest-pelvis-side airbags, driver and front passenger
- Anti-lock braking system (ABS)
- Exterior mirrors, electrically adjustable, heated and folding
- Hill Start Assist
- third brake light
- Headliner, Black
- Electronic brake force distribution (EBD)
- Driving modes: 3 adjustable
- Electric windows front and rear
- Luggage compartment floor: Flex Floor loading floor, adjustable to two heights
- Back window, heater
- Interior rearview mirror, automatically dimming
- Dual-zone automatic climate control
- Paint finish: Metallic Athletic Blue
- LED interior lighting
- Steering wheel: Leather steering wheel, flattened, perforated, with steering wheel remote control and paddle shifters
- Emergency and breakdown call
- Opel Blitz logo, Astra lettering on the rear
- Otto particulate filter
- Parkpilot, front and rear parking aid
- Tire pressure monitoring system
- Rear seat backrest folds forward in a 40:20:40 split
- Seat belts: Three-point seat belts in all seats
- Solar Protect thermal insulation glazing
- Start/Stop System
- Pre-wiring for ISOFIX child seat mounting system
- Central locking with remote control

### Extra equipment

- Paint finish: Metallic
- Tire repair kit (including tire sealant and 12-volt compressor (without jack))
- Wheels: 16" "Admiral" alloy wheels in diamond cut/black (with 205/55 R 16 all-weather tires)
- safety net

- Storage compartments
- Airbag: Front airbags, driver and front passenger
- Airbag: Front and rear outer head airbags
- Automatic activation of the hazard warning lights
- Exterior mirror housings in black
- On-board computer
- Roof design line, in black
- Tachometer
- Electronic Stability Program (ESP) and Traction Control with engine and brake intervention (TCPlus)
- Front collision warning system with automatic emergency braking and pedestrian detection (automatic transmission)
- Transmission: 8-speed automatic transmission
- rear window wiper
- Wiring harness for trailer hitch
- Front headrests and 3 rear headrests, height adjustable
- LED ambient lighting
- LED headlights
- Illuminated makeup mirrors in both sun visors
- Center armrest, front and rear
- Multimedia infotainment system with 10" touchscreen color display and 10" driver information display
- Opel Vizor with frame in high-gloss black
- Electric parking brake
- Radio accessories: Digital radio reception DAB+
- Wheels: 17" "Admiral" alloy wheels in diamond cut/black
- Keyless locking and starting system Keyless Open & Start
- Seats: Ergonomic sport active seat driver Stoff Greta/Premium leather look, black
- 12V power outlet in the center console
- Electronic immobilizer

- Package: Tech Package GS (Navigation system with Intelli-HUD Head-Up Display - Intelli-Drive 1.0: Forward Collision Warning with Automatic Emergency Braking, Pedestrian Detection, Traffic Sign Recognition and Automatic Speed Assist, as well as Blind Spot Warning, Rear Cross Traffic Alert, Active Lane Keeping Assist - IntelliLux LED Pixel Light: Adaptive LED Matrix Headlights with Individual Light Distribution - Heated ThermoTec® Windscreen - Fog Lights - Wireless Charging)



## Brief expert findings

Documents submitted	At the time of the inspection, the vehicle registration certificate Part 2 (title) was available, but the vehicle registration certificate Part 1 (document) was not. (Copy)
VIN comparison	The vehicle identification number (VIN) was read from the vehicle and its conformity with the submitted documents was confirmed by the undersigned during the inspection.
Inspection	The inspection conditions were sufficient for the assessment of the vehicle. Lifting equipment and/or a pit were available for examining the vehicle.
Test drive	No test drive/shunting maneuver was carried out during the inspection of the vehicle.
Engine function test	An engine test run was performed.

## Wear and tear

No.	Component group	Description
1	Vehicle glazing	Windscreen - Stone chips - No deduction

The vehicle shows signs of wear and tear commensurate with its age and use.

## Order/Scope of Order

An order was placed to prepare a sales report for the described vehicle. This report includes the following:

- Description of key vehicle information
- Documentation of equipment features  
(*Delivery by third-party service providers*)
- Documentation of damage, defects, missing parts
- Documentation of prior damage, unrepaired prior damage, repainting
- A brief visual or functional inspection of the equipment details, if possible.  
(*Functional testing of driver assistance systems is not included in the scope of services!*)
- a photographic documentation of the vehicle

## Basis for the order

This product is based on the guidelines for vehicle returns and valuations published by Alphabet Fleet GmbH. The expert makes the specific findings in each individual case objectively, within the framework of the prescribed standards, based on their own expertise.

The vehicle inspection takes place in a fully assembled, unassembled state.

Damage or defects that can only be detected during disassembly/diagnostic work or through further investigation remain within the realm of prognostic risk. An increased risk exists due to concealed defects caused by fraudulent misrepresentation and which were not identifiable by the expert.

Damage or defects resulting from normal use or wear and tear of the vehicle will be accepted in accordance with the applicable standard.

There was no explicit identification or monetary consideration of the expected features within the product.

Features which, in their nature and extent, slightly exceed normal use but do not constitute unacceptable damage, will be documented and indicated as signs of wear, if applicable.

Damage or defects that, according to the applicable standard, can no longer be attributed to normal use or wear and tear are listed under "Value Reducing Factors" in the product description.

Depending on the product specification, a monetary ID can be provided. If this takes place, the costs can be 100% d or pro rata depending on the vehicle's age and mileage.

## Previous damages

No apparent prior damage that had been repaired could be found on the vehicle.



Figure 1: Diagonal front (left)



Figure 2: Diagonal front (right)



Figure 3: Diagonal rear (left)



Figure 4: Diagonal rear (right)



Figure 5: Interior - front



Figure 6: Interior - rear



Figure 7: Instrument cluster



Figure 8: Instrument panel



Figure 9: Interior 360° view



Figure 10: Cargo area



Figure 11: VIN

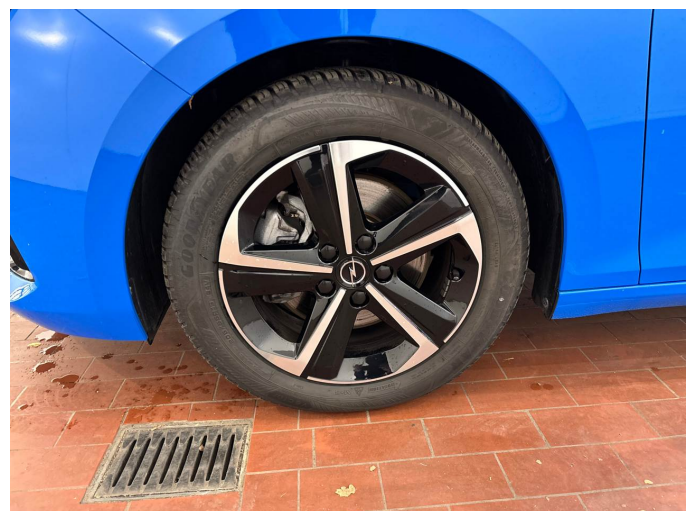


Figure 12: Mounted tyres



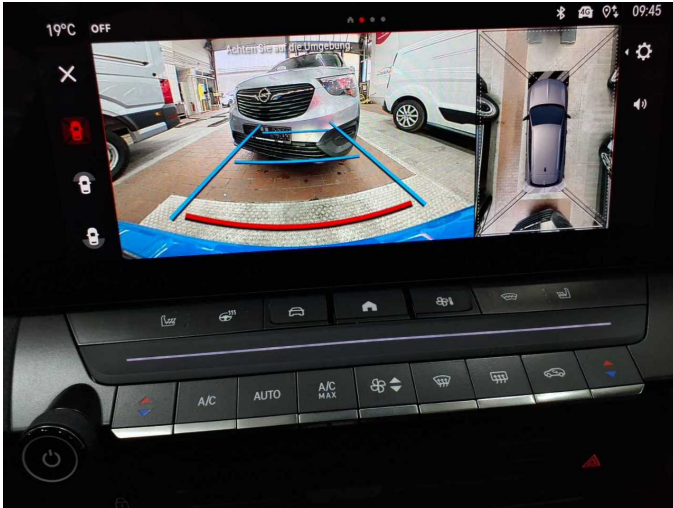


Figure 19: Misc.



Figure 20: Misc.

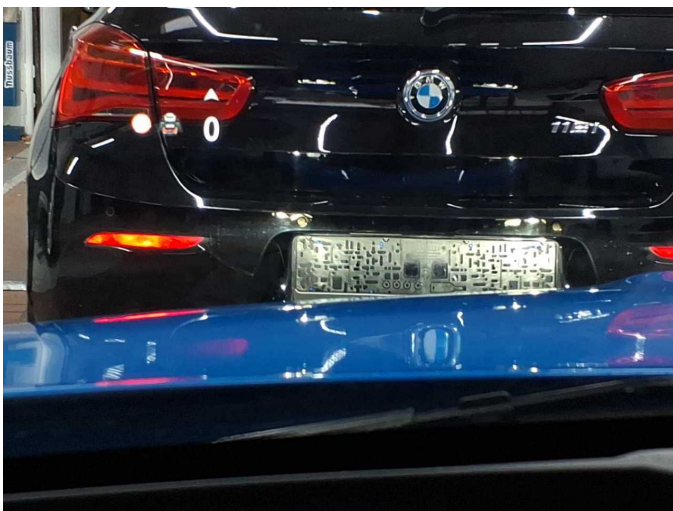


Figure 21: Misc.



Figure 22: Misc.



Figure 23: Misc.

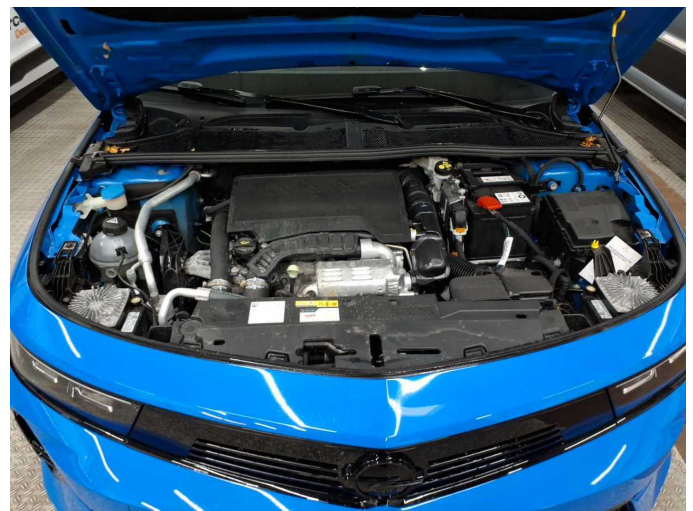


Figure 24: Misc.

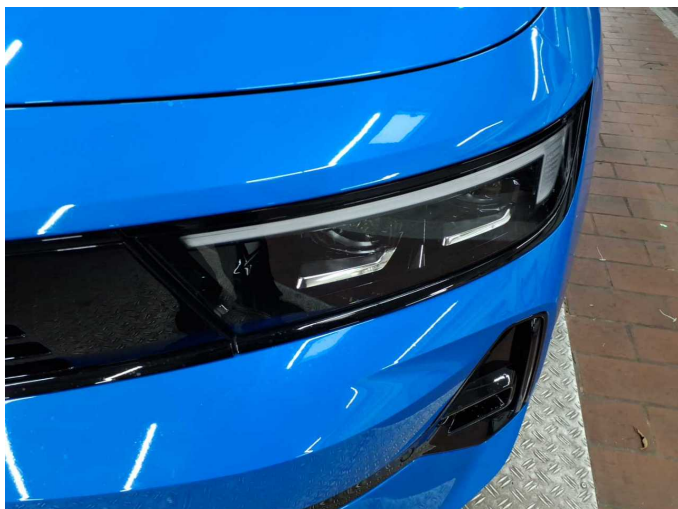


Figure 25: Misc.

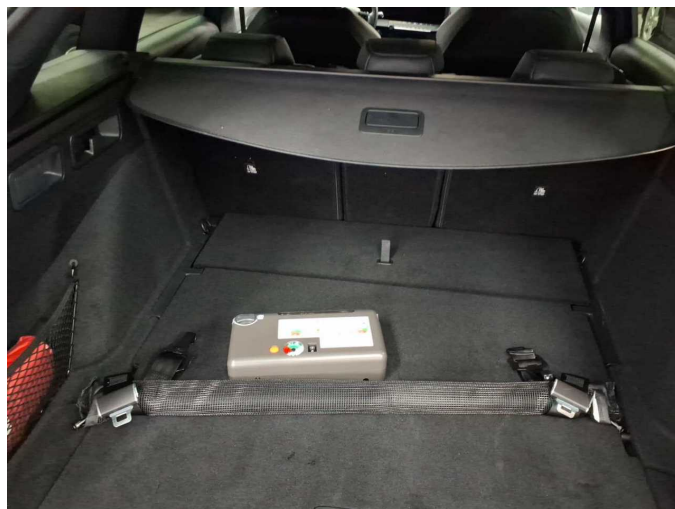


Figure 26: Misc.



Figure 27: Misc.



# Wartungshistorie

*(gemäß Auftraggeber Informationen)*

Fahrgestellnummer: VXXFRHNS7S1016411

Hersteller / Modell: OPEL OPEL Astra Sports Tourer 1.2 Turbo Automatik GS

Datum	KM-Stand	Beschreibung
22.04.2026	9.769	Motoröl b. Wartung; Ölfilter ern; Regelwartungsdienst; Wartung Sonstiges