

Expertise

Protocol number: 46042714
Order No. / Reference: 25932288
Inspection date: 16 Jun 2026

Manufacturer: Mercedes-Benz

Model: Vito 116 CDI Tourer Lang Aut. SELECT

VIN: W1VVLFEZ1T4546416



Vehicle details

Manufacturer / Type / Model / Equipment

Mercedes-Benz Vito 116 CDI Tourer Lang Aut. SELECT

Vehicle Identification number W1VVLFEZ1T4546416

Mileage (Read) 5,817 km

First registration 14 Jul 2025

Number of holders 1

Power / Engine displacement 120 kw / 1,950 ccm

Fuel type / Cylinder Diesel / 4

Gearbox / Number of gears Automatic / 9

Type of drive Rear drive

Type of vehicle Station wagon

Colour / colour code Graphitgrau Metallic

Doors / Seats 4 / 8

Upholstery type Cloth

Colour of upholstery Black-Grey

Type of use rental car



Vehicle details

Maintenance booklet / proof	digital proof / complete	Next maintenance in	382 Tag(e)
Key is / should be	2 / 2	FZG documents	ZB#2 (B) was available (copy), ZB#1 (S) was not available.
		Letter No.	HN427186
Previous damage / Accident	None detectable	Repainting	None detectable
Inspection conditions	sufficient	Lifting equipment / pit	yes
Test drive	Not performed	Engine function test	Performed
Manufacturer key number/ type code number	2222 / ABB 06762		
Emission standard	EURO6;WLTP;EB;PI/CI;M, N1, N2	fine dust sticker	
Permitted total weight	3,100 kg	Empty weight	

Tyres

Mounted tyres

#	Tyre size	Type of tyre	Manufacturer	Tread depth
1)	225/55 R17 109H	All-season tyres on Light alloy	Goodyear	8mm / 8mm
2)	225/55 R17 109H	All-season tyres on Light alloy	Goodyear	7mm / 7mm

Legend: Tread depth information for the left tire is listed first, for the right tire it is listed second on the axle in the direction of travel.

TÜV SÜD Auto Partner GmbH
Gutenbergstraße 13
70771 Leinfelden-Echterdingen

Inspection location
ARS Altmann AG Automobillogistik
Lilienthalstraße 2
29693 Hodenhagen



Equipment



Standard equipment

- ABS, ESP, ASR, EBV, BAS (Anti-lock Braking System (ABS) - Electronic Stability Program (ESP) - Traction Control (ASR) - Electronic Brakeforce Distribution (EBV) - Brake Assist (BAS))
- Airbag: Thorax-pelvis-sidebag for driver
- Airbag: Windowbag for driver and front passenger
- ATTENTION ASSIST (ATTENTION ASSIST can assist the driver on long, monotonous journeys by monitoring attention. If signs of fatigue or increasing inattention are detected, it suggests a break.)
- Electrically folding exterior mirrors, left and right
- Battery: fleece battery 12 V / 92 Ah
- Lighting: Lighting in the rear grab handle with reading light
- Brake assist, active
- Brake lights, adaptive
- Front cupholder
- Roof cladding
- Electronic tachometer
- Electrical components for trailer socket (electrical lines for power supply of the trailer - without trailer hitch control unit)
- Chassis: Comfort chassis
- Window in rear door/tailgate (with wiper/washer system)
- Front left window fixed in SW/ cargo area sliding door
- Electric window regulator driver/passenger (with anti-pinch protection, quick lowering and raising)
- Generator management (Generator management helps reduce fuel consumption and CO2 emissions. The generator is switched off and the vehicle's electrical system is powered by the battery when it is sufficiently charged. This relieves the engine of the burden of charging the battery, for example, during acceleration. - When braking and during coasting downhill, the generator is switched on and the vehicle's kinetic energy is recuperated to charge the battery.)
- Interior and ambient lighting (comfort roof control unit, - tailgate approach lighting - exit lights - front footwell lighting - lighting in rear grab handle with reading light)
- Intelligent speed assistant
- Child safety locks on doors in the passenger compartment
- Instrument cluster with color display
- Communication module (LTE) for digital services
- Large fuel tank, approx. 70 liters
- leather steering wheel
- Steering wheel: Multifunction steering wheel
- Mercedes-Benz emergency call system
- Night lighting rear
- Package: Aerodynamics
- Package: Chrome Interior Package (chrome trim: in instrument panel and door trim, air vents, climate control elements, door control panel surround, center console in gloss black)
- Breakdown management
- Upholstery: Caluma fabric, black
- Screw-in towing eye front/rear
- Passenger side airbag
- Driver's side airbag
- Airbag: Thorax airbag - Pelvis side airbag for front passenger
- Active Lane Keeping Assist
- Increased load capacity to 3,100 kg
- Exit lights
- Electrically adjustable and heated exterior mirrors, left and right
- Outdoor temperature display
- Front footwell lighting
- Hill start assist
- third brake light
- COC documents
- Comfort roof control unit
- Diesel particulate filter and SCR
- Entry grab handle for the cargo area sliding door
- Driving light assistant (automatically switching on driving lights)
- Misfueling protection
- Left/right window in SW/ Cargo area sliding door
- Front right window fixed in SW/ cargo area sliding door
- electric parking brake
- Generator 14 V / 250 A
- Speed limit 210 km/h
- Transmission: 9G-TRONIC
- Seatbelt warning device for front passenger seat
- Seatbelt warning device for driver's seat
- Grab handle for entry of driver and passenger
- Grab handle in the rear
- Lockable glove box
- Boot lid
- HOLD function
- Interior mirror (rearview mirror)
- Interior mirror automatically dimming
- Interior trim, high-end finish
- Passive child detection in the vehicle
- Tempmatic controlled air conditioning
- Comfort closing (comfort opening and closing of windows)
- Headrests (2), front
- chrome-plated radiator grille
- Steering wheel adjustable for tilt and height
- Headlight range control
- Multibeam LED with High Beam Assist PLUS
- Navigation: Navigation pre-installation
- Package: BlueEFFICIENCY (Efficiency Package)
- Package: Parking package with reversing camera
- Package: Smartphone Integration Package
- Package: Mirrors (automatically dimming interior mirror - automatically dimming exterior mirror - electrically folding exterior mirrors)
- Radio: Digital Radio DAB



- Radio: MBUX multimedia system (high-resolution 10.25-inch touchscreen, Bluetooth interface with hands-free function, USB-C port, digital radio (DAB), setup of up to 7 profiles via Mercedes me, voice assistant with seat-specific voice recognition, technical requirements for over-the-air updates, satellite view, social navigation, dynamic offboard routing* (additional route alternatives), online music)
- Sliding door: Active stop
- Crosswind Assist
- Seats: 3-seat rail system (with quick-release mechanism)
- Seats: Passenger compartment 1st row, 3-seater bench / Comfort (outer seat foldable)
- Seats: Comfort passenger seat
- Seats: Passenger seat cushion depth adjustment
- Sun visor, driver/passenger side, illuminated mirror
- 12V socket
- Cruise control
- Carpet in the rear
- Ambient lighting tailgate
- Updates to the intelligent speed assistant
- Pre-installation for Remote Services Plus
- Warning triangle
- Immobiliser
- Central locking with radio remote control
- Car registration

Extra equipment

- Towing capacity 2500 kg
- Tinted rear windows, black glass
- Semi-automatic air conditioning, TEMPATIC in the rear
- Paint finish: Metallic
- Center console with storage compartment
- Navigation
- Navigation accessories: Live Traffic Information
- Package: Acoustic package for noise reduction
- Tires: All-season tires
- Wheels: Alloy wheels 7 J x 17, 5-spoke design
- Electric suction fan, power level 5
- Sliding door on the left (cargo area)
- Seat: Lumbar support, passenger seat
- Seats: Seat attachment opposite 1st rear seat rails
- Traffic Sign Assistant

- Radio accessories: 2-way speakers front + rear.
- Tires: 235/55 R 17 RF (reinforced)
- Tires: Tires without specified make
- Tires: Premium protection tires (3 years)
- Tire pressure monitoring (on front and rear axles (wireless))
- Wheels: Premium complete wheel protection (3 years)
- Headlights: halogen technology
- Sliding door on the right, cargo/passenger compartment
- electromechanical power steering
- Seats: Passenger compartment armrest (per row)
- Seats: Passenger compartment 2nd row, 3-seater bench / Comfort (outer seat foldable)
- Seats: Comfort driver's seat
- Seats: Driver's seat cushion depth adjustment
- Start-stop function
- Bumpers painted in body color
- Carpet in the front of the vehicle interior
- Blind Spot Assist
- Ambient lighting in the exterior mirrors
- First aid kit
- Warm air duct to the passenger compartment
- ASSYST maintenance interval indicator
- Heat-insulating glass
- Auxiliary heater, electric

- Towbar (detachable ball head)
- Double cup holder in the center of the cockpit
- THERMOTRONIC automatic climate control
- LED Intelligent Light System (ILS) (including dynamic cornering lights, country road and motorway lights, turning lights, dynamic headlight range control, automatic high beam assist, LED taillights)
- Package: Winter Package (heated windscreen - heated seats for driver and front passenger - pockets on driver and front passenger seatbacks - heated multifunction steering wheel)
- Key: Multi-button radio remote control
- Seat: Lumbar support driver's seat
- 12V socket in the trunk/cargo area



Brief expert findings

Documents submitted	At the time of the inspection, the vehicle registration certificate Part 2 (title) was available, but the vehicle registration certificate Part 1 (document) was not. (Copy)
VIN comparison	The vehicle identification number (VIN) was read from the vehicle and its conformity with the submitted documents was confirmed by the undersigned during the inspection.
Inspection	The inspection conditions were sufficient for the assessment of the vehicle. Lifting equipment and/or a pit were available for examining the vehicle.
Test drive	No test drive/shunting maneuver was carried out during the inspection of the vehicle.
Engine function test	An engine test run was performed.

Value reducing factors

No.	Component group	Description
1	Misc.	Main inspection - No evidence - No deduction
2	Trim / covers	Boot lid - interior trim - Scratched - Loss in value
3	Door - front left side	Door edge - Scratch(es) - Smart repair
4	Sliding door, right	Sliding door - dent(s) - Smooth repair work
5	Mudguard - right side	Mudguard - right side - Scratch(es) - Smart repair
6	Rear of vehicle	Trailer hitch (Anhängerabdeckung fehlt) - Missing - Perform
7	Door - front right side	Door - Scratch(es) - Paint

Wear and tear

No.	Component group	Description
1	Vehicle glazing	Windscreen - Stone chips - No deduction
2	Sill - right side	Sill - Scratch(es) - No deduction

The vehicle shows signs of wear and tear commensurate with its age and use.

Paint coat thickness measurement

Roof	99 µm	Roof rail - left side	112 µm
Roof rail - right side	98 µm	Boot lid / rear door	98 µm
Mudguard - left side	121 µm	Mudguard - right side	110 µm
Bonnet	105 µm	Side panel - rear left side	100 µm
Side panel - rear right side	89 µm	Door - rear left side	109 µm
Door - rear right side	111 µm	Door - front left side	120 µm
Door - front right side	109 µm		

Order/Scope of Order

An order was placed to prepare a sales report for the described vehicle. This report includes the following:

- Description of key vehicle information
- Documentation of equipment features
(*Delivery by third-party service providers*)
- Documentation of damage, defects, missing parts
- Documentation of prior damage, unrepaired prior damage, repainting
- A brief visual or functional inspection of the equipment details, if possible.
(*Functional testing of driver assistance systems is not included in the scope of services!*)
- a photographic documentation of the vehicle



Basis for the order

This product is based on the guidelines for vehicle returns and valuations of light commercial vehicles published by Alphabet Fleet Management GmbH. The expert makes the specific findings in each individual case objectively, within the framework of the prescribed standards, based on their own expertise.

The vehicle inspection takes place in a fully assembled, unassembled state.

Damage or defects that can only be detected during disassembly/diagnostic work or through further investigation remain within the realm of prognostic risk. An increased risk exists due to concealed defects caused by fraudulent misrepresentation and which were not identifiable by the expert.

Damage or defects resulting from normal use or wear and tear of the vehicle will be accepted in accordance with the applicable standard.

There was no explicit identification or monetary consideration of the expected features within the product.

Features which, in their nature and extent, slightly exceed normal use but do not constitute unacceptable damage, will be documented and indicated as signs of wear, if applicable.

Damage or defects that, according to the applicable standard, can no longer be attributed to normal use or wear and tear are listed under "Value Reducing Factors" in the product description.

Depending on the product specification, a monetary ID can be provided. If this takes place, the costs can be 100% d or pro rata depending on the vehicle's age and mileage.

Previous damages

No apparent prior damage that had been repaired could be found on the vehicle.



Figure 1: Diagonal front (left)



Figure 2: Diagonal front (right)



Figure 3: Diagonal rear (left)



Figure 4: Diagonal rear (right)

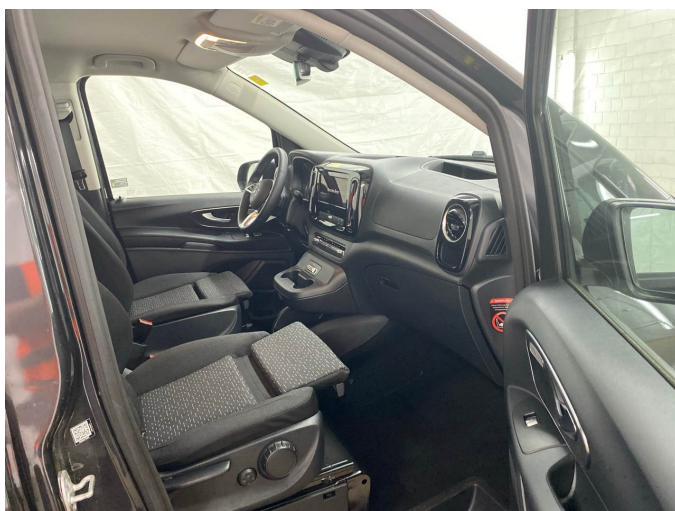


Figure 5: Interior - front



Figure 6: Interior - rear



Figure 7: Instrument cluster



Figure 8: Instrument panel



Figure 9: Interior 360° view



Figure 10: Cargo area



Figure 11: VIN



Figure 12: Mounted tyres



Figure 13: Documents



Figure 14: Navigation



Figure 15: Misc.



Figure 16: Misc.



Figure 17: Misc.



Figure 18: Misc.



Figure 19: Misc.



Figure 20: Misc.

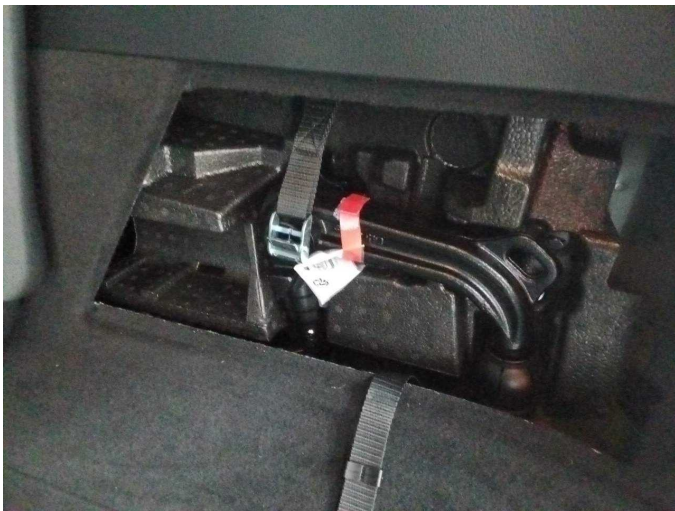
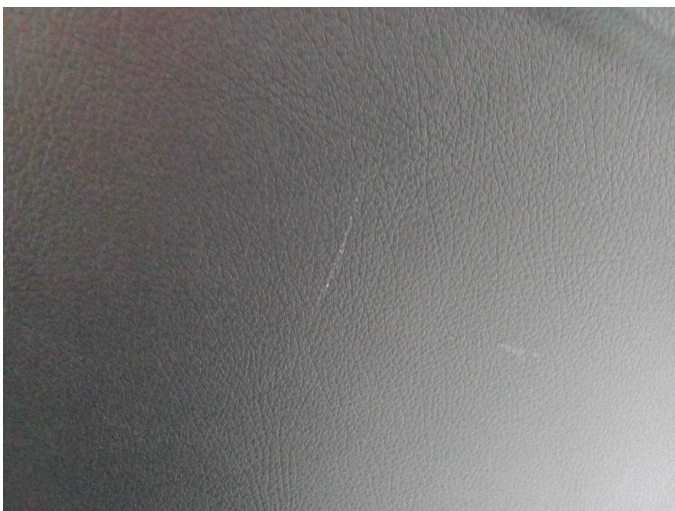


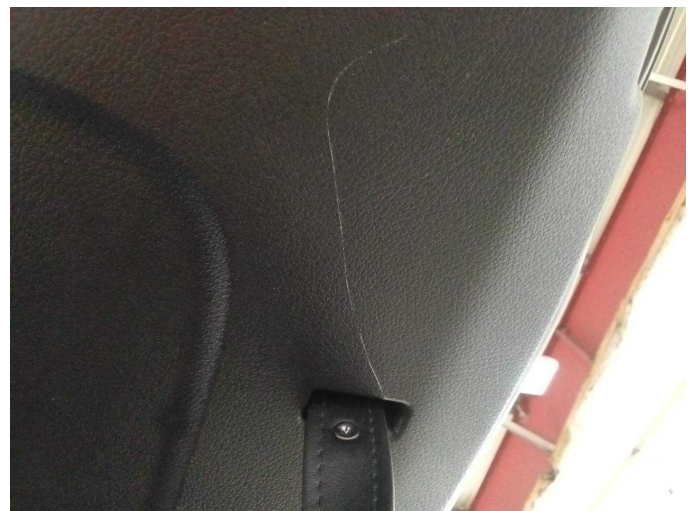
Figure 21: Misc.



Damage 2: Trim / covers: Boot lid - interior trim - Scratched - Loss in value



Damage 2: Trim / covers: Boot lid - interior trim - Scratched - Loss in value



Damage 2: Trim / covers: Boot lid - interior trim - Scratched - Loss in value



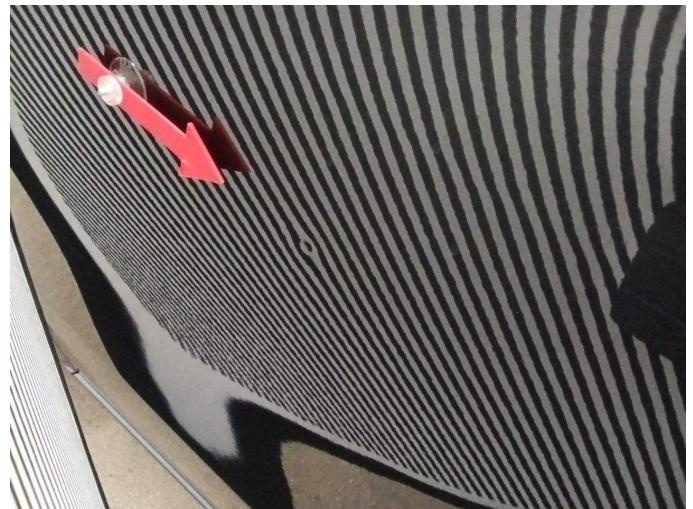
Damage 3: Door - front left side: Door edge - Scratch(es) - Smart repair



Damage 3: Door - front left side: Door edge - Scratch(es) - Smart repair



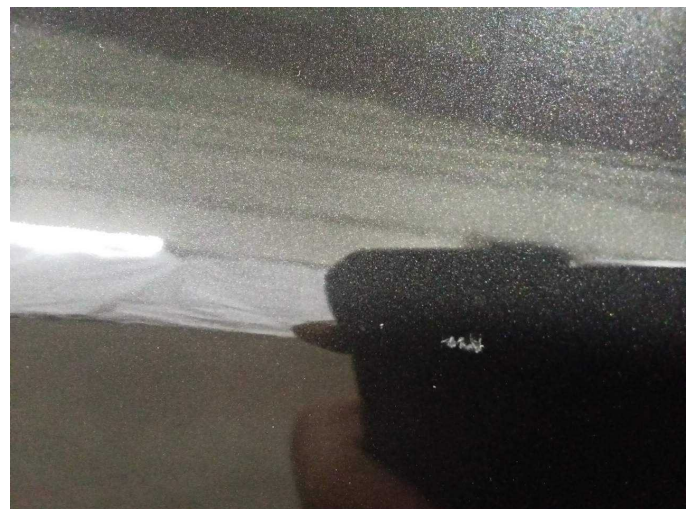
Damage 4: Sliding door, right: Sliding door - dent(s) - Smooth repair work



Damage 4: Sliding door, right: Sliding door - dent(s) - Smooth repair work



Damage 5: Mudguard - right side: Mudguard - right side - Scratch(es) - Smart repair



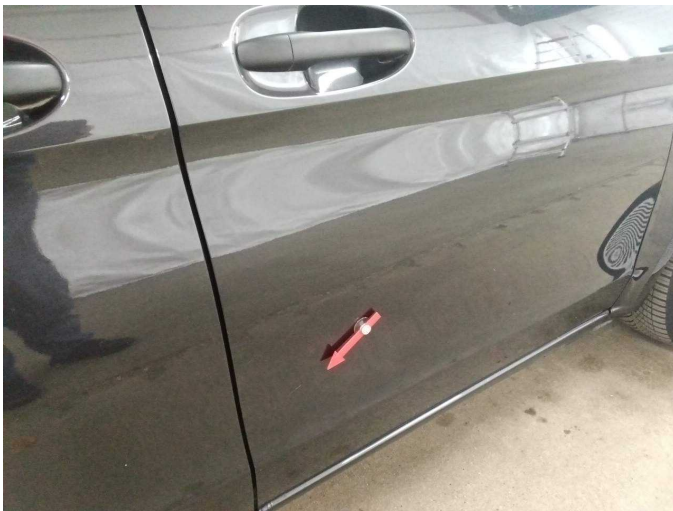
Damage 5: Mudguard - right side: Mudguard - right side - Scratch(es) - Smart repair



Damage 6: Rear of vehicle: Trailer hitch (Anhängerabdeckung fehlt) - Missing - Perform



Damage 6: Rear of vehicle: Trailer hitch (Anhängerabdeckung fehlt) - Missing - Perform



Damage 7: Door - front right side: Door - Scratch(es) - Paint



Damage 7: Door - front right side: Door - Scratch(es) - Paint