

## Expertise

Protocol number: 45887928  
Order No. / Reference: 26446015  
Inspection date: 11 Jun 2026

Manufacturer: Audi

Model: Q5 40 TDI quattro S tronic S line

VIN: WAUZZZFY7P2122770



### Vehicle details

#### Manufacturer / Type / Model / Equipment

Audi Q5 40 TDI quattro S tronic S line

**Vehicle Identification number** WAUZZZFY7P2122770

**Mileage (Read)** 158,239 km

**First registration** 12 Sept 2023

**Number of holders** 1

**Power / Engine displacement** 150 kw / 1,968 ccm

**Fuel type / Cylinder** Hybrid Diesel / E / 4

**Gearbox / Number of gears** Automatic / 7

**Type of drive** All-wheel drive

**Type of vehicle** SUV

**Colour / colour code** MythosSchwarz Metallic

**Doors / Seats** 5 / 5

**Upholstery type** Leather

**Colour of upholstery** Brown



## Vehicle details

<b>Maintenance booklet / proof</b>	digital proof / complete	<b>Next maintenance in</b>	17,400 km
<b>Last service on / at</b>	03/2026 at 145,566 km		
<b>Key is / should be</b>	2 / 2	<b>FZG documents</b>	ZB#2 (B) was available (copy), ZB#1 (S) was not available.
		<b>Letter No.</b>	GS508951
<b>Previous damage / Accident</b>	Detectable	<b>Repainting</b>	Detectable
<b>Inspection conditions</b>	sufficient	<b>Lifting equipment / pit</b>	yes
<b>Test drive</b>	Not performed	<b>Engine function test</b>	Performed
<b>Manufacturer key number/ type code number</b>	0588 / BQW 00663		
<b>Emission standard</b>	EURO6;WLTP;AP;PI/CI; M, N1 I	<b>fine dust sticker</b>	
<b>Permitted total weight</b>	2,510 kg	<b>Empty weight</b>	

## Tyres

### Mounted tyres

#	Tyre size	Type of tyre	Manufacturer	Tread depth
1)	235/55 R19 101W	Summer tyres on Light alloy	Continental	5mm / 5mm
2)	235/55 R19 101W	Summer tyres on Light alloy	Continental	5mm / 5mm

### Additional tyres

#	Tyre size	Type of tyre	Manufacturer	Tread depth
1)	225/55 R18 102H	Winter tyres on Light alloy	Bridgestone	8mm / 8mm
2)	225/55 R18 102H	Winter tyres on Light alloy	Bridgestone	8mm / 8mm

### Replacement

Typ	Tyre size	Type of tyre	Manufacturer	Tread depth
	Tirefit	Expiration date 03/2028		

**Legend: Tread depth information for the left tire is listed first, for the right tire it is listed second on the axle in the direction of travel.**



## Equipment

### Standard equipment

- Airbag for driver and front passenger
- Accent areas matte black
- Anti-lock braking system (ABS)
- Audi connect emergency call & service with Audi connect Remote & Control
- Exterior mirror housings in body color
- third brake light
- Black roof rails with roof rack recognition
- Tachometer
- Door sill trims with aluminum inlay at the front, illuminated, with S lettering
- Electronic Stability Control (ESC)
- Sport suspension
- front and rear floor mats
- Cruise control system including speed limiter
- rear window wiper
- Interior mirror dimming
- Manual child lock
- boot floor mat
- Rear headrests (3)
- Stainless steel loading sill protector
- front center armrest
- Non-smoking version
- Wheel: Tire pressure monitoring system
- Radio: MMI Radio plus with MMI touch
- Seat belts
- Seats: Front seats manually adjustable
- Lane Departure Warning
- Phone: Bluetooth interface
- First aid kit with warning triangle
- Glazing: Side and rear panes are made of heat-insulating glass.
- Central locking with remote control
- Airbag: Front side airbags and head airbag system
- "quattro" all-wheel drive with ultra technology
- Traction control (ASR)
- Audi drive select
- Audi pre sense city
- Hill descent control
- Roof edge spoiler
- Diesel particulate filter (DPF)
- Parking assistance plus
- Electromechanical parking brake
- Electronic Differential Lock (EDS)
- Driver information system with color display
- Electric windows front and rear
- Electrically opening and closing tailgate
- Transmission: S tronic 7-speed
- Interior lighting
- Camera-based traffic sign recognition
- ISOFIX child seat attachment and Top Tether for the outer rear seats
- Front headrests
- Mild hybrid
- Model designation according to new performance labeling
- Wheel: On-board tools (excluding jack)
- Wheel: Tire repair kit
- Electromechanical power steering
- Seats: Split-folding rear seat backrest
- Front sun visor
- Start-stop system
- Separation net
- Glazing: Windscreen in heat-insulating and acoustic glazing
- Electronic immobilizer
- black decorative trim



## Extra equipment

- Business Package (Audi phone box - MMI Navigation plus (incl. driver information system with color display) - Audi virtual cockpit - 3-spoke leather steering wheel with multifunction plus - Heated front seats - Automatically dimming interior mirror - Electrically adjustable, heated and folding exterior mirrors, automatically dimming on both sides incl. curb view function for the passenger mirror - High-beam assistant - Manual sunshade for rear door windows)
- Comfort center armrest at the front (adjustable in tilt and longitudinally sliding or completely foldable)
- Comfort key (without Safelock) (provides access and engine start authorization without actively using the vehicle key. With the electronic access and immobilizer system, you can open your vehicle at the doors and tailgate via wireless communication between the key and the vehicle, and lock it using the sensors on the door handles. The comfort key must be carried in the vehicle for this to work. The engine is started and stopped using the engine start/stop button.)
- Head-up display (On request, the speed and other driver-relevant information from optional equipment such as assistance systems and navigation, as well as warning messages, are projected into the driver's direct field of vision - The multi-color display enables a high-contrast presentation - The projection surface of the discreetly integrated head-up display in the instrument panel is adjustable in height and brightness)
- Parking Assistance Package (surround view cameras - Parking Assistant with Parking Aid Plus: The Parking Assistant with Parking Aid Plus detects suitable parking spaces. The driver is actively supported during parking maneuvers through targeted steering inputs. A visual display warns of obstacles. Within the detection range of the ultrasonic sensors, the Parking Assistant helps in finding a suitable parking space along the roadway. The system supports the driver during parking maneuvers through targeted steering inputs.)
- Radio accessories: Audi sound system (10 speakers including center speaker and subwoofer - 6-channel amplifier - total output of 180 watts)
- Seat covers in leather/artificial leather mono.pur 550 combination (seat center section of the front seats and the two outer rear seats as well as seat side bolster on the driver's side in the entry area in leather - seat side bolsters, headrests, center armrest front and rear as well as middle rear seat in artificial leather mono.pur 550)
- Seats: Pneumatically adjustable lumbar support with massage function (The lumbar support provides support in the lumbar region through targeted inflation and deflation of three lordosis bladders and is adjustable via lumbar support buttons on the seat. The massage function, with three different programs (wave, stretch, kneading) and three intensity levels, can be switched on and off via the lumbar support buttons with integrated direct massage buttons. Programs and intensity levels can be adjusted via the MMI. Massage duration approximately 10 minutes.)
- 3-zone automatic climate control (climate control unit with large TFT display and capacitive rocker switches - electronically regulates the air temperature and distribution individually for driver and front passenger - additional climate control unit for setting the rear passenger compartment temperature in the rear center console - automatic recirculation control - dust and odor-removing cabin air filter - residual heat utilization - buttons for defrosting the front and rear windows - with key recognition and humidity sensor)
- Ambient Lighting Package Plus (in addition to the standard interior lighting (LED): - Approach lighting in the exterior door handles - Entry lights on the underside of the front and rear doors (white) - Footwell lighting front and rear (white) - Interior door handles front and rear (white) - Ambient lighting in the front and rear doors, multi-colored - Illuminated storage compartment below the instrument panel - Ambient lighting on the front center console, multi-colored - Illuminated decorative inserts in the instrument panel and doors, multi-colored)
- Assistance Package Tour (adaptive speed assistant (0-250 km/h) - traffic jam assistant - Audi active lane assist (above 65 km/h) - predictive efficiency assistant - left turn assistant - evasive steering assistant - high beam assistant)
- Black fabric headliner
- Black Optics Package Plus (Audi rings front and rear as well as model designation on the rear in black - black accents in the area of the Audi Singleframe - black accents in the area of the trim strips on the side windows and the front and rear bumpers - exterior mirror housings in black (optionally available) - roof rails in black (not for Sportback))
- Decorative inlays in matt brushed aluminum (for dashboard, door panels and center console)
- Electrically adjustable, heated and folding exterior mirrors, automatically dimming on both sides (including curb view function for the passenger side - with integrated LED turn signal - aspherical mirror glass on the left, convex on the right - including heated windshield washer nozzles - the curb view function tilts the passenger exterior mirror downwards when reverse gear is engaged, giving the driver a better view of the curb).
- Front seat heating (for driver and front passenger side, individually adjustable in 3 stages via direct selection button on the climate control unit)
- Fuel tank 70 liters with additional 24-liter AdBlue tank (larger tank for AdBlue solution)
- Glazing: Sun protection glazing, tinted (rear window, rear door and side windows tinted)



- Steering wheel: Leather steering wheel in 3-spoke design with multifunction plus (with 14 multifunction buttons for convenient operation of the available infotainment features such as audio skip, telephony, NAV button or the freely programmable button - adjustable in height and distance - with full-size airbag - shift paddles for manual changing of the driving modes)
- Towbar (ball head mechanically swiveling with electric release - ball rod and head made of forged steel - operation via push button in the luggage compartment - trailer stabilization via the electronic stability control (ESC) The integrated swiveling system socket allows continuous operation of electrical devices in the trailer or caravan while driving and can be swivelled invisibly behind the bumper apron when not in use)
- Wheel: Light alloy wheels, 19" 5-arm pylon, titanium grey matt, polished (8.0 J x 19, tires 235/55 R 19 An offer from Audi Sport GmbH)
- LED headlights: Matrix LED headlights with dynamic light display and dynamic turn signals (multifunction camera - headlight cleaning system). Front and rear LED headlights with the following functionalities: - visually enhanced daytime running lights - low beam - high beam - position lights - turn signals - cornering lights - all-weather lights - maneuvering lights - motorway lights - automatic dynamic headlight range control - static cornering lights - dynamic light display for coming home/leaving home functions.
- Paint finish: Metallic
- Panoramic glass roof (The panoramic glass roof impresses with its user-friendly operation. The glass element can be opened and closed electrically. The sunshades are operated just as conveniently. From the outside, the panoramic glass roof can also be operated using the remote key and the comfort closing feature. When open, the two-part panoramic glass roof improves the interior climate through efficient ventilation. An integrated wind deflector reduces wind noise.)
- Seats: Driver's seat electrically adjustable (with electric adjustment of seat height, seat longitudinal position, seat tilt and backrest tilt for the driver's seat - passenger seat manually adjustable)
- Seats: Front sports seats

## Brief expert findings

Documents submitted	At the time of the inspection, the vehicle registration certificate Part 2 (title) was available, but the vehicle registration certificate Part 1 (document) was not. (Copy)
VIN comparison	The vehicle identification number (VIN) was read from the vehicle and its conformity with the submitted documents was confirmed by the undersigned during the inspection.
Inspection	The inspection conditions were sufficient for the assessment of the vehicle. Lifting equipment and/or a pit were available for examining the vehicle.
Test drive	No test drive/shunting maneuver was carried out during the inspection of the vehicle.
Engine function test	An engine test run was performed.

## Value reducing factors

No.	Component group	Description
1	Wing mirror - right side	Mirror housing - Scratch(es) - Smart repair
2	Bonnet	Insulation lining - Missing - Replace
3	Door - front left side	Door - Scratch(es) - Smart repair
4	Front bumper	Spoiler - Broken / torn - Replace
5	Rear bumper	Rear bumper - Scratch(es) - Paint

## Wear and tear

No.	Component group	Description
1	Body	Body - Scratch(es) - No deduction
2	Trim / covers	Floor mats (VL) - Holes - No deduction

The vehicle shows signs of wear and tear commensurate with its age and use.



## Previous damages

No.	Previous damage	Extent of damage (Net)
1	Front, Side right, Provided by user / customer, from 12 Sept 2024	15.008,87 €

## Repainting

No.	Repainting
1	Bonnet, Professionally carried out, Invoice of repair done Non-existent

## Paint coat thickness measurement

Bonnet	175 µm
--------	--------

## Order/Scope of Order

An order was placed to prepare a sales report for the described vehicle. This report includes the following:

- Description of key vehicle information
- Documentation of equipment features  
*(Delivery by third-party service providers)*
- Documentation of damage, defects, missing parts
- Documentation of prior damage, unrepaired prior damage, repainting
- A brief visual or functional inspection of the equipment details, if possible.  
*(Functional testing of driver assistance systems is not included in the scope of services!)*
- a photographic documentation of the vehicle

## Basis for the order

This product is based on the guidelines for vehicle returns and valuations published by Alphabet Fleet GmbH. The expert makes the specific findings in each individual case objectively, within the framework of the prescribed standards, based on their own expertise.

The vehicle inspection takes place in a fully assembled, unassembled state.

Damage or defects that can only be detected during disassembly/diagnostic work or through further investigation remain within the realm of prognostic risk. An increased risk exists due to concealed defects caused by fraudulent misrepresentation and which were not identifiable by the expert.

Damage or defects resulting from normal use or wear and tear of the vehicle will be accepted in accordance with the applicable standard.

There was no explicit identification or monetary consideration of the expected features within the product.

Features which, in their nature and extent, slightly exceed normal use but do not constitute unacceptable damage, will be documented and indicated as signs of wear, if applicable.

Damage or defects that, according to the applicable standard, can no longer be attributed to normal use or wear and tear are listed under "Value Reducing Factors" in the product description.

Depending on the product specification, a monetary ID can be provided. If this takes place, the costs can be 100% d or pro rata depending on the vehicle's age and mileage.

## Previous damages

According to available information previous damages were repaired at the vehicle. Traces of repairs, which allow conclusions about the area of repair, were not recognizable during the inspection.



## Comments

- Winterradsatz ist kein Bestandteil des Auslieferungsumfangs.

Das Fahrzeug befand sich zum Besichtigungszeitpunkt in beschädigtem, nicht demontiertem Zustand. Schadenausweitung möglich, Zusatzkosten können entstehen



Figure 1: Diagonal front (left)



Figure 2: Diagonal front (right)



Figure 3: Diagonal rear (left)



Figure 4: Diagonal rear (right)



Figure 5: Interior - front

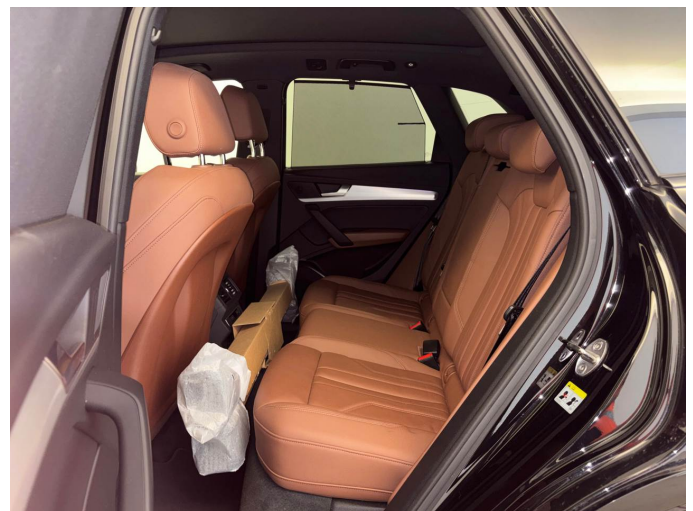


Figure 6: Interior - rear



Figure 7: Instrument cluster



Figure 8: Instrument panel



Figure 9: Interior 360° view



Figure 10: Cargo area

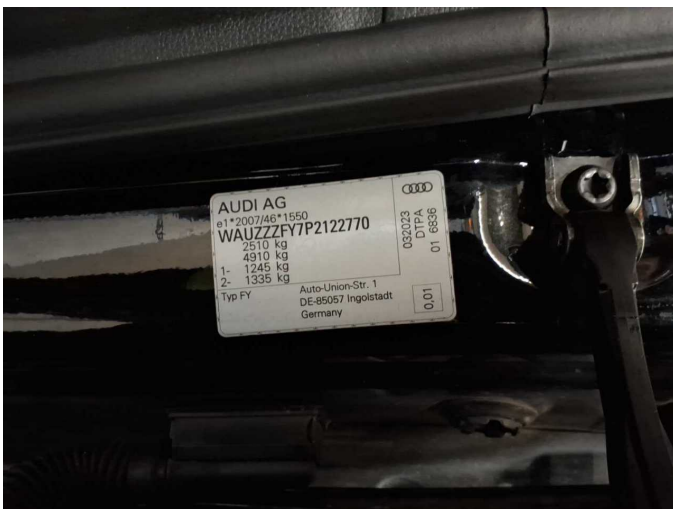


Figure 11: VIN



Figure 12: Mounted tyres



Figure 13: Documents



Figure 14: Additional tyres



Figure 15: Navigation

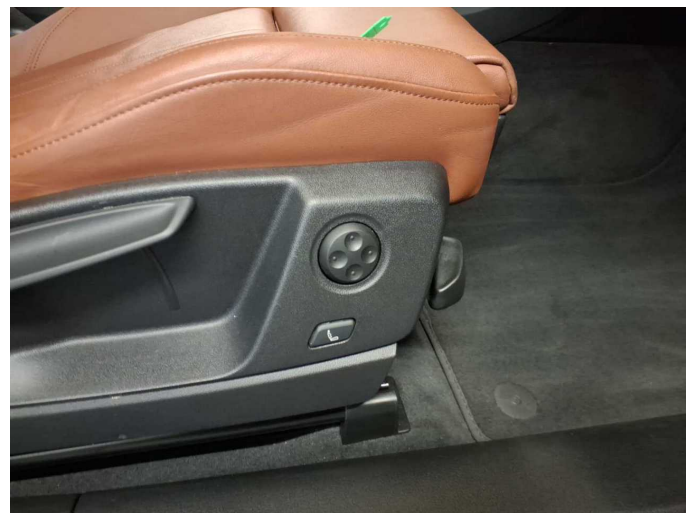


Figure 16: Misc.



Figure 17: Misc.



Figure 18: Misc.



Figure 19: Misc.



Figure 20: Misc.



Figure 21: Misc.

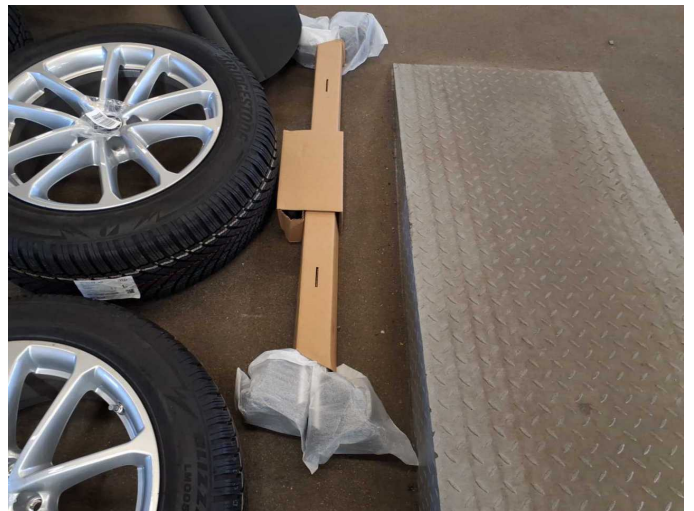


Figure 22: Misc.

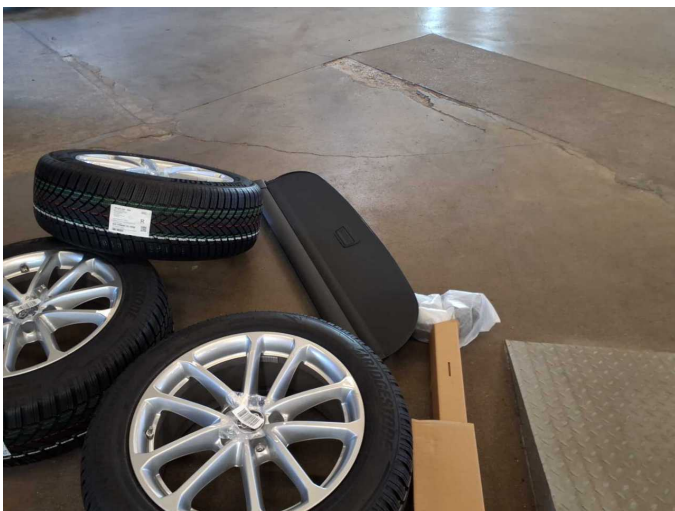


Figure 23: Misc.

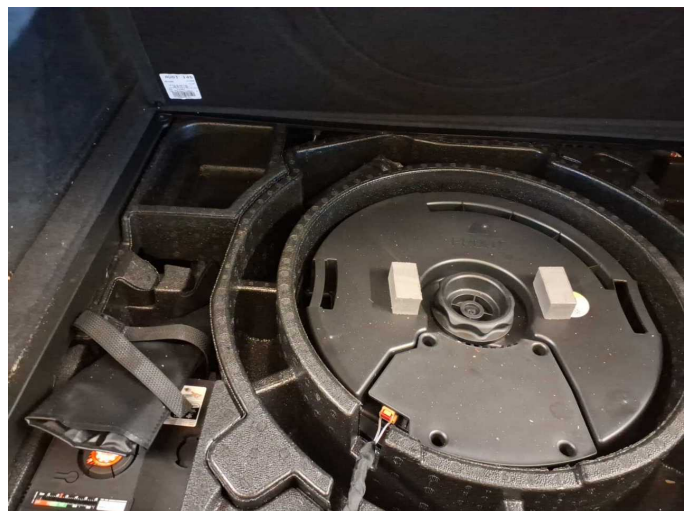


Figure 24: Misc.



Figure 25: Misc.



Figure 26: Misc.

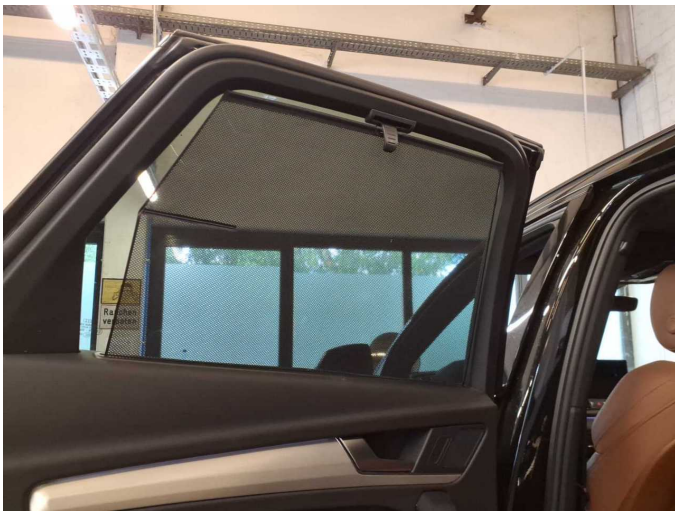


Figure 27: Misc.



Figure 28: Misc.



Figure 29: Misc.



Figure 30: Misc.



Figure 31: Misc.



Figure 32: Misc.



Figure 33: Misc.



Figure 34: Misc.



Figure 35: Misc.



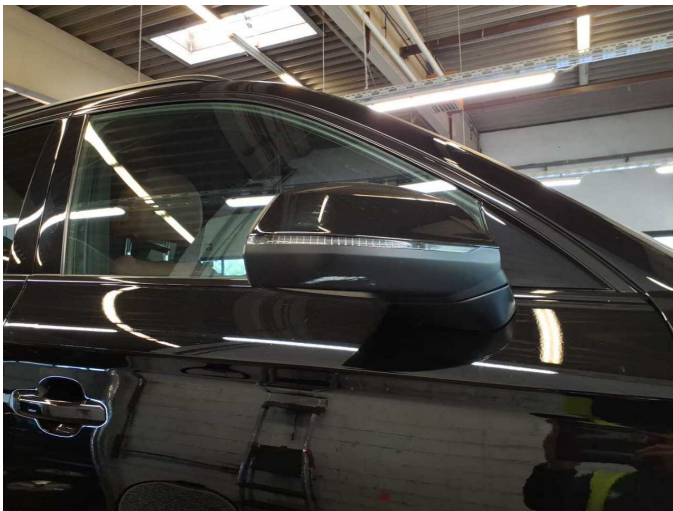
Figure 36: Misc.



Figure 37: Misc.



Figure 38: Misc.



Damage 1: Wing mirror - right side: Mirror housing - Scratch(es) - Smart repair



Damage 1: Wing mirror - right side: Mirror housing - Scratch(es) - Smart repair



Damage 2: Bonnet: Insulation lining - Missing - Replace



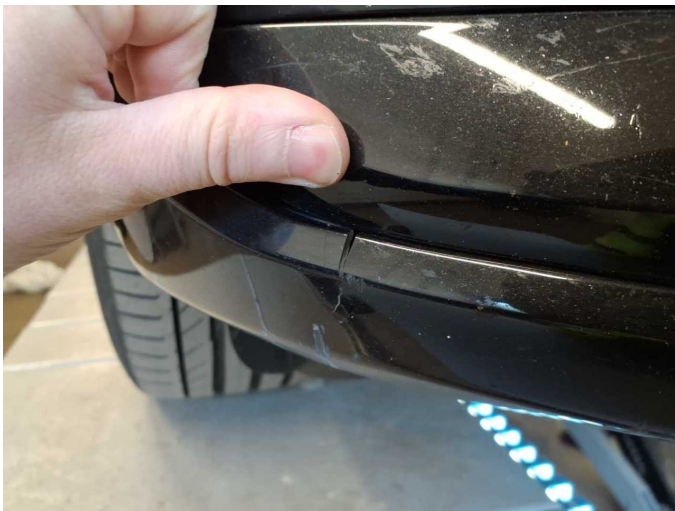
Damage 3: Door - front left side: Door - Scratch(es) - Smart repair



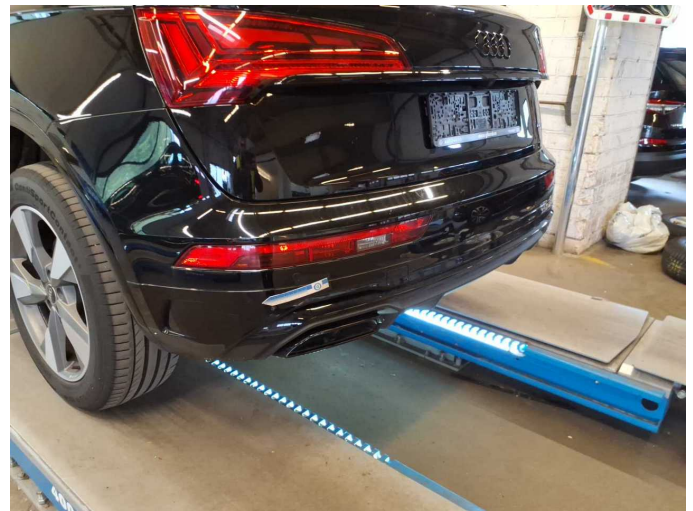
**Damage 3:** Door - front left side: Door - Scratch(es) - Smart repair



**Damage 4:** Front bumper: Spoiler - Broken / torn - Replace



**Damage 4:** Front bumper: Spoiler - Broken / torn - Replace



**Damage 5:** Rear bumper: Rear bumper - Scratch(es) - Paint



**Damage 5:** Rear bumper: Rear bumper - Scratch(es) - Paint



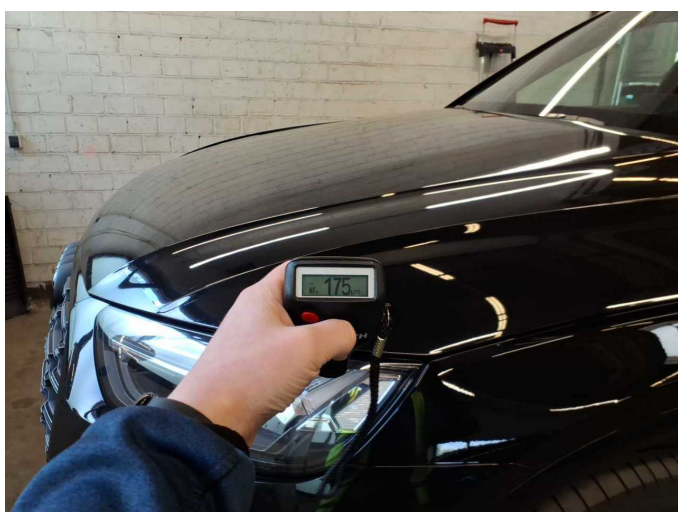
**Damage 5:** Rear bumper: Rear bumper - Scratch(es) - Paint



**Damage 5:** Rear bumper: Rear bumper - Scratch(es) - Paint



**Wear and tear 2:** Trim / covers: Floor mats (VL) - Holes - No deduction



**Repainting 1:** Bonnet



# Wartungshistorie

(gemäß Auftraggeber Informationen)

Fahrgestellnummer: WAUZZZF7P2122770  
Hersteller / Modell: AUDI AUDI Q5 40 TDI quattro S tronic S line

Datum	KM-Stand	Beschreibung
17.03.2026	145.566	Motoröl b. Wartung; Ölfilter ern; Regelwartungsdienst; Wartung Sonstiges
01.09.2025	116.256	Bremsflüssigkeit; Bremsflüssigkeit ern; Getriebeöl ern/prüfen; Kraftstofffilter ern; Motoröl b. Wartung; Ölfilter ern; Regelwartungsdienst; Reparatur Sonstiges; Wartung Sonstiges
21.03.2025	86.398	Bremsbelagfühler ern; Bremse Sonstiges; Bremsklötze hinten; Bremsklötze vorne; Bremsscheiben hinten; Bremsscheiben vorne; Luftfiltereinsatz ern; Motoröl b. Wartung; Ölfilter ern; Regelwartungsdienst; Wartung Sonstiges
17.09.2024	56.463	Getriebeöl ern/prüfen; Kraftstofffilter ern; Motoröl b. Wartung; Ölfilter ern; Regelwartungsdienst; Reparatur Sonstiges; Wartung Sonstiges
16.04.2024	28.915	Motoröl b. Wartung; Ölfilter ern; Regelwartungsdienst; Wartung Sonstiges