

Expertise

Protocol number: 46077919
Order No. / Reference: 26461443
Inspection date: 19 Jun 2026

Manufacturer: Ford

Model: Focus Turnier 1.5 EcoBlue Start-Stopp-System Aut. ST-LINE

VIN: WF0PXXGCHPPD75155



Vehicle details

Manufacturer / Type / Model / Equipment

Ford Focus Turnier 1.5 EcoBlue Start-Stopp-System Aut. ST-LINE

Vehicle Identification number WF0PXXGCHPPD75155

Mileage (Read) 134,579 km

First registration 24 May 2023

Number of holders 1

Power / Engine displacement 85 kw / 1,499 ccm

Fuel type / Cylinder Diesel / 4

Gearbox / Number of gears Automatic / 8

Type of drive Front drive

Type of vehicle Station wagon

Colour / colour code Agate Black Metallic

Doors / Seats 5 / 5

Upholstery type Cloth

Colour of upholstery Anthracite-Black

Vehicle with smoke odor no



| Vehicle details | | | |
|--|------------------------------|--------------------------------|--|
| Maintenance booklet / proof | digital proof / complete | Next maintenance in | 0 % |
| Last service on / at | 07/2025 at 105,330 km | | |
| Key is / should be | 2 / 2 | FZG documents | ZB#2 (B) was available (copy), ZB#1 (S) was not available. |
| | | Letter No. | GT910723 |
| Previous damage / Accident | None detectable | Repainting | None detectable |
| Inspection conditions | sufficient | Lifting equipment / pit | yes |
| Test drive | Not performed | Engine function test | Performed |
| Manufacturer key number/ type code number | 8566 / BYE 00005 | | |
| Emission standard | EURO6;WLTP;AP;PI/CI; M, N1 I | fine dust sticker | |
| Permitted total weight | 2,035 kg | Empty weight | |

Tyres

| Mounted tyres | | | | |
|---------------|----------------|-----------------------------|--------------|-------------|
| # | Tyre size | Type of tyre | Manufacturer | Tread depth |
| 1) | 215/50 R17 95H | Winter tyres on Light alloy | Continental | 5mm / 5mm |
| 2) | 215/50 R17 95H | Winter tyres on Light alloy | Continental | 5mm / 5mm |

| Replacement | | | | |
|-------------|-----------|-------------------------|--------------|-------------|
| Typ | Tyre size | Type of tyre | Manufacturer | Tread depth |
| | Tirefit | Expiration date 04/2027 | | |

Legend: Tread depth information for the left tire is listed first, for the right tire it is listed second on the axle in the direction of travel.

TÜV SÜD Auto Partner GmbH
Gutenbergstraße 13
70771 Leinfelden-Echterdingen

Inspection location
Mosolf SE & Co.KG
Faberweg 25
73230 Kirchheim unter Teck



Equipment



Standard equipment

- Airbag: Passenger airbag deactivation
- Exterior mirrors painted in body color, electrically adjustable, heated and foldable (with integrated turn signals)
- Tires: 7 J x 17 alloy wheels (4) with 215/50 R 17 tires (in 5-spoke Y-design, in Rock Metallic)
- Black woven fabric headliner
- Roof rails, black
- Roof spoiler painted in car color
- Tachometer
- Electronic Stability Program (ESP) (with Emergency Brake Assist (EBA) and Traction Control System (TCS))
- Lane keeping assist including lane keeping assist
- Electric front and rear windows (with all-around closing function)
- FordPass Connect including live traffic information (Additionally for PowerShift automatic transmission: Ford Mobile Remote remote start function)
- Cruise control
- Transmission: 8-speed automatic transmission
- Back window, heater
- Interior lighting with LED technology (front and rear and map reading lights at the front)
- Isofix mounting (including top tether anchor points on the outer seats of the 2nd row)
- Air conditioning with automatic temperature control (separately adjustable for driver and passenger side (2-zone automatic climate control))
- Headrests: 2 front and 3 rear, height adjustable
- LED headlights (LED low beam - LED high beam - LED daytime running lights incl. integrated LED turn signals at the front - LED cornering lights, static, incl. integrated LED fog light function and maneuvering light)
- Steering column, adjustable (adjustable in height and reach)
- MyKey key system (individually programmable second key)
- Navigation: Ford SYNC 4 including Ford navigation system with AppLink, 13.2" touchscreen and DAB/DAB+ (6 speakers - Amazon Alexa built-in voice assistant - Android Auto and Apple CarPlay - Steering wheel controls - Digital user manual - Bluetooth hands-free calling and audio streaming - USB ports - Voice control for audio and phone - Ford Power-Up software updates - Intelligent route suggestions - Customizable user profiles - Radio player - Audible and visual route guidance, dynamic and cloud-based navigation with advanced traffic information system, lane guidance and road map for Europe)
- Pre-Collision Assist (Forward Alert system with pedestrian and bicycle detection)
- Windscreen wipers with rain sensor (sensitivity adjustable)
- Headlight assistant with day/night sensor
- Electro-mechanical speed-dependent power steering (EPAS - Electric Power Assisted Steering)
- Anti-lock braking system (ABS) with electronic brake force distribution (EBD)
- Attachment points behind the second row of seats for mounting the safety partition net
- Hill start assist
- Body styling kit (radiator grille, ST-Line design - side skirts, painted in body color - front and rear bumpers, ST-Line design)
- Diesel particulate filter (DPF)
- Electronic Shifter
- Driver information system with on-board computer, color (10.7 cm screen diagonal)
- Chassis: Sport-tuned
- Electric parking brake with auto-hold function
- Ford Power Start function (keyless start)
- Luggage compartment cover
- Luggage compartment lighting
- Speed limiter (Intelligent speed limiter with speed limit display)
- Illuminated glove compartment
- rear window wiper
- Interior mirror, automatically dimming
- Intelligent safety system (front airbag for driver and front passenger - front and rear head and shoulder airbags - side airbag for driver and front passenger - seat belt tensioners and force limiters in the front and on the outer seats of the 2nd row - 3-point seat belts on all seats, height-adjustable in the front - safety pedal assembly)
- LED taillights
- Steering wheel: ST-Line design steering wheel (flattened at the bottom, with "ST" logo and red decorative stitching - in Sensico leather look)
- Steering wheel: Paddle shifters on the steering wheel
- Make-up mirrors in driver and passenger sun visors
- Front center console "Premium" (sliding armrest - cup holders - storage compartments - 12-volt and USB connection)
- Emergency call assistant
- Front and rear parking pilot system
- Upholstery: Cloth
- Post-Collision Assist (In the event of a severe collision, which would also deploy the airbag and in which the driver might be incapacitated, this system initiates the braking process. This reduces the risk of colliding with further obstacles and road users after the initial collision. The driver can intervene and operate the accelerator or brake pedal manually throughout the entire process.)
- Tire repair kit (for use at a maximum speed of 80 km/h)
- Tire Pressure Monitoring System (TPMS)
- Headlight dipped beam (with switch-off delay)
- Selective driving mode switch (including 3 selectable driving modes: Normal, Sport and Eco)
- Seats: Passenger seat height-adjustable, manually (with adjustable lumbar support)
- Seats: Rear seat backrest (foldable, 60:40 split)



- Seats: Driver's seat height adjustable (with manually adjustable lumbar support)
- Seats: Front sports seats with enhanced lateral support
- 12-volt power outlet in the luggage compartment
- Variable radiator air intake
- Warning system for unfastened seat belts for the 1st and 2nd rows of seats

- Start-stop system
- Carpet floor mats in the front
- Lashing eyes in the luggage compartment
- Electronic immobilizer
- Central locking with remote control and remote luggage compartment release

Extra equipment

- Swiveling towbar (incl. ESP trailer stabilization)
- Tailgate, electric and sensor-controlled (opening and closing via foot movement)
- Package: Easy Parking (Active Parking Assist with parking and exiting function (in conjunction with 8-speed automatic transmission including semi-automated vehicle guidance) - Door edge protection - Rearview camera with "Split View" technology)
- Package: Driver Assistance Package II (Drive Assist Intelligent adaptive cruise control Lane keeping assist Traffic jam assist with Stop&Go Traffic sign recognition Wrong-way driver warning radio Evasive steering assist Distance display and distance warning Driver drowsiness detection High beam assist (in conjunction with adaptive LED matrix headlights with glare-free high beam assist) Blind spot assist with cross traffic alert including emergency braking function (when reversing out of parking spaces) and trailer recognition Rear view camera with split view Electrically folding exterior mirrors with surround view)

- FAMILY PACKAGE
- Paint finish: Metallic
- LED matrix headlights, adaptive (LED matrix low beam - LED matrix high beam - LED matrix cornering light, dynamic - LED daytime running lights incl. integrated LED turn signals at the front - LED cornering light, static, incl. maneuvering and bad weather light - Automatic headlight range control - High beam assist, glare-free)
- Package: Winter (heated windscreen - heated steering wheel - individually and variably heated front seats)
- Panoramic sliding sunroof, electric (roof console with glasses storage compartment - illuminated make-up mirror)
- Radio: B&O Sound System (675 Watt premium sound system with 10 speakers, including subwoofer - based on the renowned sound and design expertise of Bang & Olufsen)
- Side windows from the 2nd row of seats and rear window, dark tinted.

Brief expert findings

| | |
|----------------------|--|
| Documents submitted | At the time of the inspection, the vehicle registration certificate Part 2 (title) was available, but the vehicle registration certificate Part 1 (document) was not. (Copy) |
| VIN comparison | The vehicle identification number (VIN) was read from the vehicle and its conformity with the submitted documents was confirmed by the undersigned during the inspection. |
| Inspection | The inspection conditions were sufficient for the assessment of the vehicle. Lifting equipment and/or a pit were available for examining the vehicle. |
| Test drive | No test drive/shunting maneuver was carried out during the inspection of the vehicle. |
| Engine function test | An engine test run was performed. |

Value reducing factors

| No. | Component group | Description |
|-----|------------------------------|---|
| 1 | Door - front left side | Door edge - Scratch(es) - Smart repair |
| 2 | Side panel - rear right side | Sill - Scratch(es) - Smart repair |
| 3 | Wheel / tyres | Alloy rim - rear left side - Scratch(es) - Loss in value |
| 4 | Door - rear left side | Door seal - Broken / torn - Replace |
| 5 | Instrument panel | Indicator light (Airbag & Gurtkontrolle) - on - Perform diagnosis |
| 6 | Misc. | Inspection / maintenance - Due - Replace |
| 7 | Front bumper | Front bumper - Dent / paintcoat damage - Paint |
| 8 | Vehicle glazing | Windscreen - Stone chips - Replace |



Wear and tear

| No. | Component group | Description |
|-----|-----------------|-----------------------------------|
| 1 | Body | Body - Scratch(es) - No deduction |

The vehicle shows signs of wear and tear commensurate with its age and use.

Order/Scope of Order

An order was placed to prepare a sales report for the described vehicle. This report includes the following:

- Description of key vehicle information
- Documentation of equipment features
(Delivery by third-party service providers)
- Documentation of damage, defects, missing parts
- Documentation of prior damage, unrepaired prior damage, repainting
- A brief visual or functional inspection of the equipment details, if possible.
(Functional testing of driver assistance systems is not included in the scope of services!)
- a photographic documentation of the vehicle

Basis for the order

This product is based on the guidelines for vehicle returns and valuations published by Alphabet Fleet GmbH. The expert makes the specific findings in each individual case objectively, within the framework of the prescribed standards, based on their own expertise.

The vehicle inspection takes place in a fully assembled, unassembled state.

Damage or defects that can only be detected during disassembly/diagnostic work or through further investigation remain within the realm of prognostic risk. An increased risk exists due to concealed defects caused by fraudulent misrepresentation and which were not identifiable by the expert.

Damage or defects resulting from normal use or wear and tear of the vehicle will be accepted in accordance with the applicable standard.

There was no explicit identification or monetary consideration of the expected features within the product.

Features which, in their nature and extent, slightly exceed normal use but do not constitute unacceptable damage, will be documented and indicated as signs of wear, if applicable.

Damage or defects that, according to the applicable standard, can no longer be attributed to normal use or wear and tear are listed under "Value Reducing Factors" in the product description.

Depending on the product specification, a monetary ID can be provided. If this takes place, the costs can be 100% d or pro rata depending on the vehicle's age and mileage.

Previous damages

No apparent prior damage that had been repaired could be found on the vehicle.



Figure 1: Diagonal front (left)



Figure 2: Diagonal front (right)



Figure 3: Diagonal rear (left)



Figure 4: Diagonal rear (right)



Figure 5: Interior - front



Figure 6: Interior - rear



Figure 7: Instrument cluster



Figure 8: Instrument panel



Figure 9: Interior 360° view



Figure 10: Cargo area



Figure 11: VIN



Figure 12: Mounted tyres

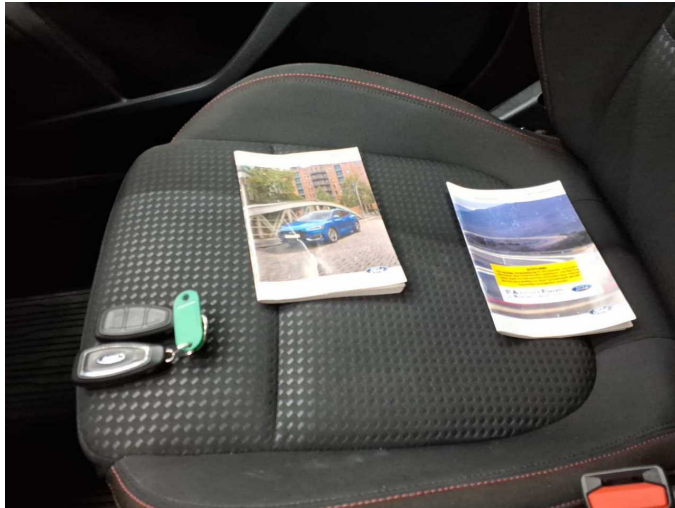


Figure 13: Documents



Figure 14: Documents



Figure 15: Navigation



Figure 16: Misc.



Figure 17: Misc.



Figure 18: Misc.



Figure 19: Misc.



Figure 20: Misc.

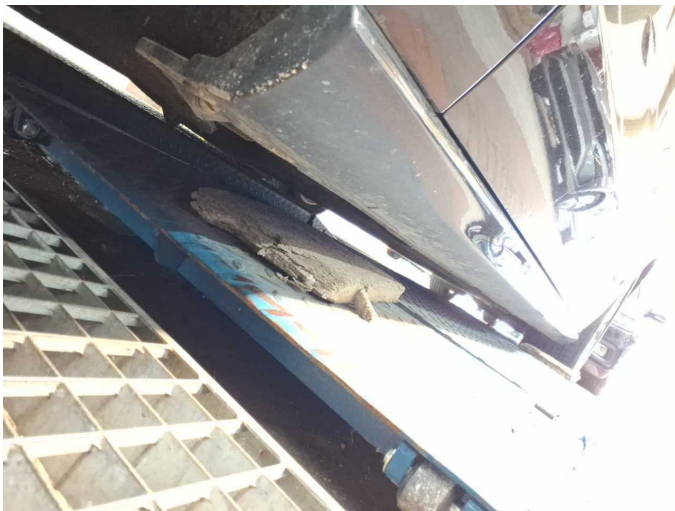


Figure 21: Misc.



Figure 22: Misc.



Figure 23: Misc.



Figure 24: Misc.



Figure 25: Misc.



Figure 26: Misc.

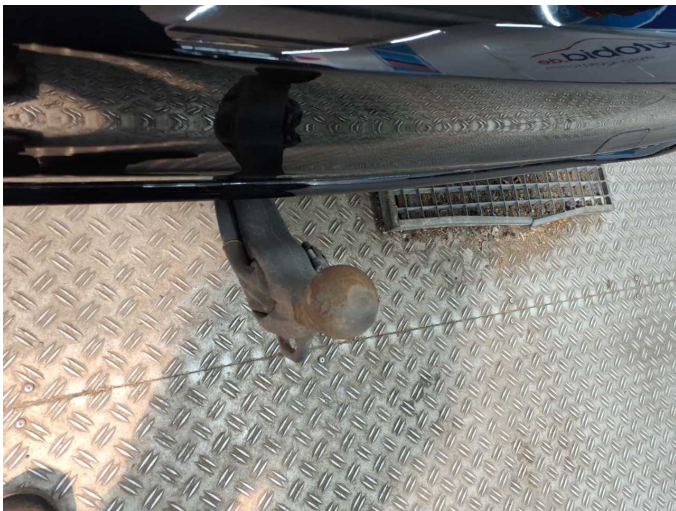


Figure 27: Misc.



Figure 28: Misc.



Figure 29: Misc.



Damage 1: Door - front left side: Door edge - Scratch(es) - Smart repair



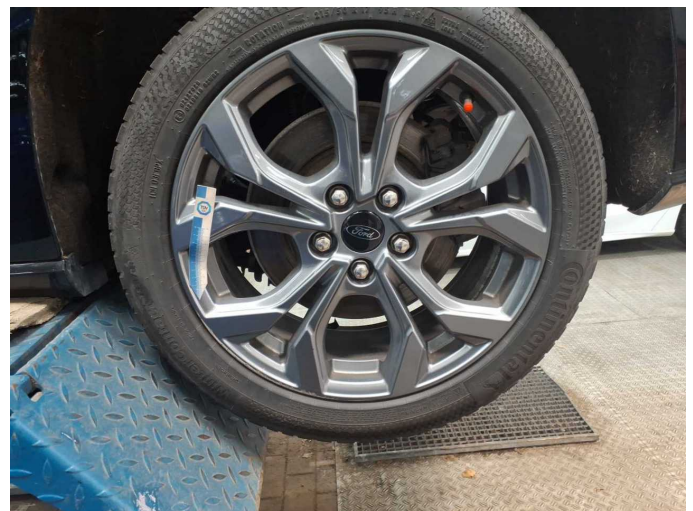
Damage 1: Door - front left side: Door edge - Scratch(es) - Smart repair



Damage 2: Side panel - rear right side: Sill - Scratch(es) - Smart repair



Damage 2: Side panel - rear right side: Sill - Scratch(es) - Smart repair



Damage 3: Wheel / tyres: Alloy rim - rear left side - Scratch(es) - Loss in value



Damage 3: Wheel / tyres: Alloy rim - rear left side - Scratch(es) - Loss in value



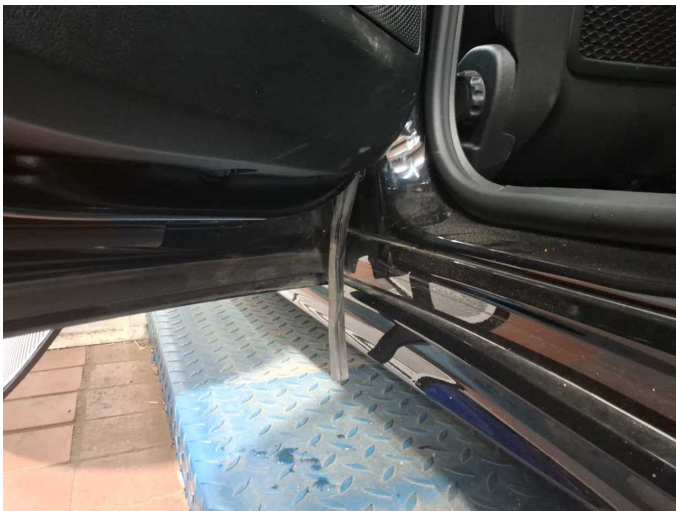
Damage 3: Wheel / tyres: Alloy rim - rear left side - Scratch(es) - Loss in value



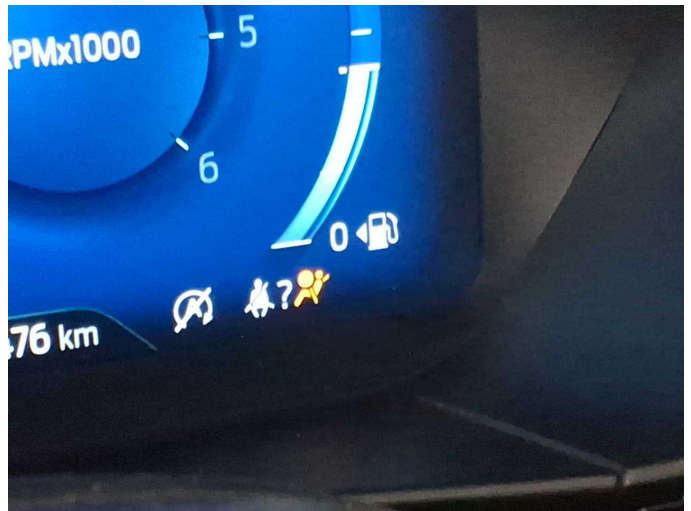
Damage 3: Wheel / tyres: Alloy rim - rear left side - Scratch(es) - Loss in value



Damage 4: Door - rear left side: Door seal - Broken / torn - Replace



Damage 4: Door - rear left side: Door seal - Broken / torn - Replace



Damage 5: Instrument panel: Indicator light (Airbag & Gurtkontrolle) - on - Perform diagnosis



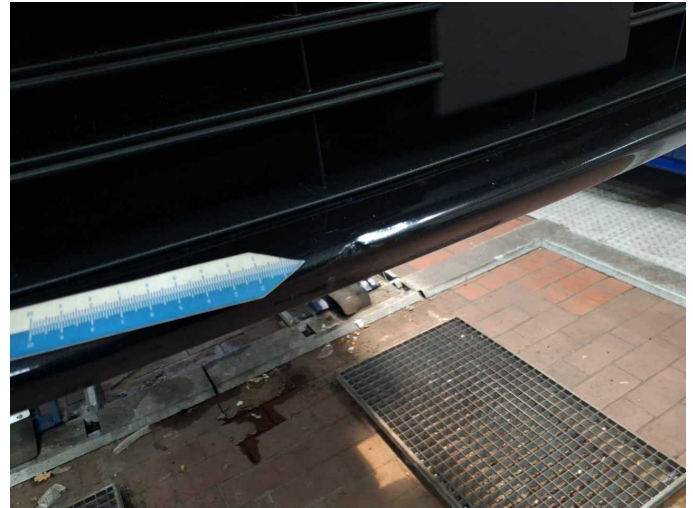
Damage 5: Instrument panel: Indicator light (Airbag & Gurtkontrolle) - on - Perform diagnosis



Damage 6: Misc.: Inspection / maintenance - Due - Replace



Damage 7: Front bumper: Front bumper - Dent / paintcoat damage - Paint



Damage 7: Front bumper: Front bumper - Dent / paintcoat damage - Paint



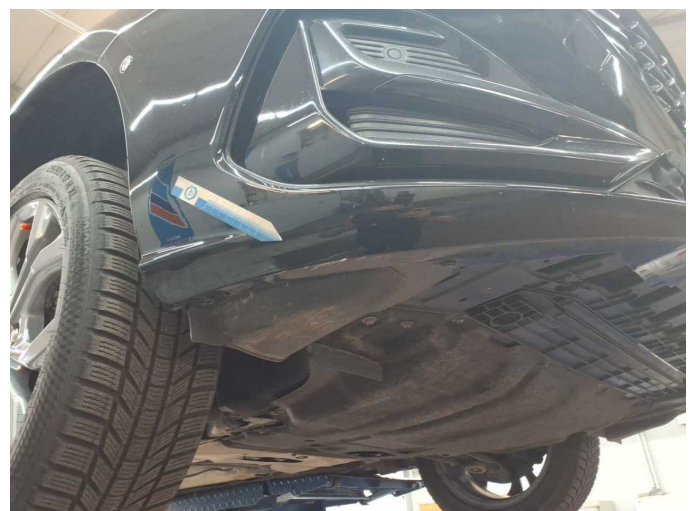
Damage 7: Front bumper: Front bumper - Dent / paintcoat damage - Paint



Damage 7: Front bumper: Front bumper - Dent / paintcoat damage - Paint



Damage 7: Front bumper: Front bumper - Dent / paintcoat damage - Paint



Damage 7: Front bumper: Front bumper - Dent / paintcoat damage - Paint



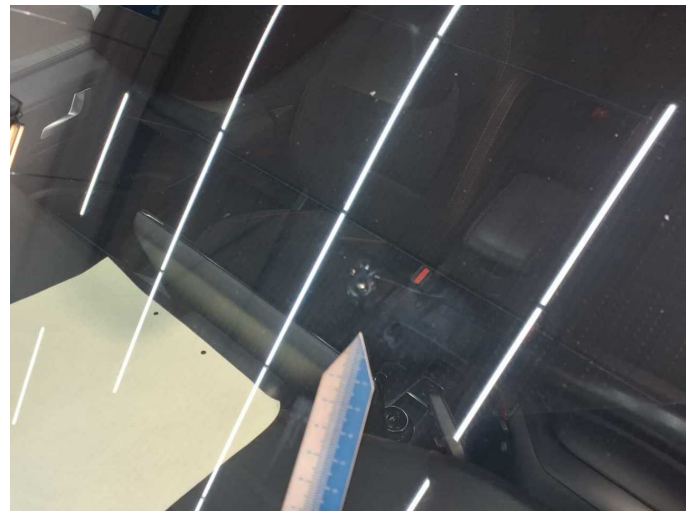
Damage 7: Front bumper: Front bumper - Dent / paintcoat damage - Paint



Damage 7: Front bumper: Front bumper - Dent / paintcoat damage - Paint



Damage 8: Vehicle glazing: Windscreen - Stone chips - Replace



Damage 8: Vehicle glazing: Windscreen - Stone chips - Replace



Damage 8: Vehicle glazing: Windscreen - Stone chips - Replace



Wartungshistorie

(gemäß Auftraggeber Informationen)

Fahrgestellnummer: WF0PXXGCHPPD75155
Hersteller / Modell: FORD FORD Focus Turnier 1.5 EcoBlue Start-Stopp-System Aut. ST-LINE

| Datum | KM-Stand | Beschreibung |
|------------|----------|---|
| 26.11.2025 | 117.464 | Bremsklötze vorne |
| 22.07.2025 | 105.330 | Bremsflüssigkeit; Bremsflüssigkeit ern; Motoröl b. Wartung; Ölfilter ern; Ölwechsel; Wartung Sonstiges |
| 18.02.2025 | 86.732 | Motoröl b. Wartung; Ölfilter ern; Regelwartungsdienst; Wartung Sonstiges |
| 20.08.2024 | 64.194 | Bremse Sonstiges; Bremsklötze hinten; Bremsklötze vorne; Bremsscheiben + Klötze v; Bremsscheiben vorne; Kraftstofffilter ern; Luftfiltereinsatz ern; Motoröl b. Wartung; Ölfilter ern; Regelwartungsdienst; Wartung Sonstiges |
| 05.03.2024 | 40.698 | Motoröl b. Wartung; Ölfilter ern; Regelwartungsdienst; Wartung Sonstiges |
| 29.02.2024 | 33.290 | Systemtest/Eigendiagnose |
| 07.11.2023 | 21.159 | Bremse Sonstiges; Bremsklötze vorne; Bremsscheiben + Klötze v; Bremsscheiben vorne; Motoröl b. Wartung; Ölfilter ern; Ölwechsel; Wartung Sonstiges |