

## Expertise

Protocol number: 45790598  
Order No. / Reference: 26314350  
Inspection date: 27 May 2026

Manufacturer: Volkswagen

Model: Touran 2.0 TDI SCR DSG Comfortline

VIN: WVGZZZ1TZNW009858



### Vehicle details

#### Manufacturer / Type / Model / Equipment

Volkswagen Touran 2.0 TDI SCR DSG Comfortline

**Vehicle Identification number** WVGZZZ1TZNW009858

**Mileage (Read)** 161,109 km

**First registration** 14 Mar 2022

**Number of holders** 1

**Power / Engine displacement** 110 kw / 1,968 ccm

**Fuel type / Cylinder** Diesel / 4

**Gearbox / Number of gears** Automatic / 7

**Type of drive** Front drive

**Type of vehicle** Van

**Colour / colour code** uranograu Uni (17F)

**Doors / Seats** 5 / 5

**Upholstery type** Cloth

**Colour of upholstery** Black



TÜV SÜD Auto Partner GmbH  
Wiesenring 2  
04159 Leipzig

Inspection location  
Hartmann Fleet Professionals GmbH  
Leerenstraße 25  
29683 Bad Fallingbommel



## Equipment



## Standard equipment

- 2 USB-C ports on the front
- Storage compartments in the overhead console
- Airbag, head airbag system for front and rear passengers (including front side airbags)
- Exterior mirror housings and door handles in body color
- Headliner in Storm Grey
- Decorative inserts "New Brushed Design" (for instrument panel and front door trim)
- Tachometer
- Electronic parking brake including auto-hold function
- Electronic Stability Program (ESP) with counter-steering support (Incl. ABS with brake assist, ASR (traction slip control), EDS (electronic differential lock), MSR (engine drag torque control) and trailer stabilization)
- Additional luggage compartment lighting (removable and usable as a flashlight)
- Speed limiter
- Transmission: 7-speed DSG (7-speed dual-clutch transmission DSG)
- Rear window wiper with intermittent function
- ISOFIX mounting points on rear seats (device for attaching child seats to the rear seats)
- Front headrests (safety-optimized, longitudinally and height-adjustable)
- Steering wheel: Leather (gearshift knob in leather)
- Illuminated makeup mirrors in the sun visors
- Multifunction display "Plus"
- Fatigue detection (detects signs of possible driver fatigue based on characteristic steering behavior, time of day and driving duration and issues a visual and audible warning)
- Emergency call service (no registration required, service is activated upon delivery)
- Radio "Composition" (16.5 cm screen diagonal - touchscreen - FM radio reception - phase diversity - MP3 playback - USB-C with Apple compatibility - 4 x 20 watt output power - telephone interface - 3-band tone control - DAB+ digital radio reception)
- Radio accessories: 8 speakers
- Tire pressure monitoring system (passive)
- Wheels: Tire Mobility Set (12-volt compressor and tire sealant)
- Drawers under the front seats
- Seat belts: 3 three-point automatic seat belts in the rear (and seat belt tensioners in the rear)
- Seats: Front passenger seat backrest folds down completely (with table and pass-through function)
- Seats: Folding tables on the backs of the front seats (tilt adjustable)
- Seats: Front seats are height-adjustable
- 12V power outlet on the rear center console (and in the luggage compartment)
- Textile floor mats (front and rear)
- Prepared for "We Connect" and "We Connect Plus"
- Electronic immobilizer
- Storage compartment with lid on the instrument panel
- Airbag for driver and front passenger (with front passenger airbag deactivation, including driver's side knee airbag)
- Electrically adjustable and heated exterior mirrors
- third brake light
- black roof rails
- Decorative inlays "Piano Black" (for center console)
- Diesel particulate filter
- Parking aid (acoustic warning signals for obstacles in the front and rear area)
- Windscreen in heat-insulating glass
- Luggage management package (with luggage net that can be fixed to rails)
- Luggage compartment cover (with comfort opening, extendable, removable and stowable)
- Luggage compartment floor height adjustable (with fixing element)
- Glove compartment with cooling option
- Rear window heated
- Interior lights with delayed shut-off and dimming function, 2 reading lights front and rear
- Headrests (3) in the 2nd row of seats (height adjustable)
- Black radiator grille with chrome strips on the slats
- Paint finish: Solid
- Headlight range control
- Front center armrest (height and length adjustable - with removable storage box - 2 rear air vents)
- Non-smoking version (power outlet instead of cigarette lighter at the front)
- Emergency braking assistant "Front Assist"
- Upholstery: Cloth
- Proactive occupant protection system in conjunction with "Front Assist" (detects critical traffic situations with increased accident potential - prepares vehicle occupants and the vehicle for a possible accident by tightening the front, fastened seat belts and securing the driver and front passenger, and closing open windows and the sunroof except for a gap)
- Wheels: Light alloy (4) "Karlstad" 6.5 J x 16 (tires 205/60 R 16)
- Gearshift knob in leather
- Electromechanical power steering (speed-dependent control)
- Seats: 3 individual seats in the 2nd row (longitudinal adjustment, backrest tilt adjustment, armrest and "EasyFold" folding function)
- Seats: Comfort seats in the front
- Seats: Lumbar support in the front
- Start-stop system (with brake energy recuperation)
- Bumpers in body color
- Daytime running light
- First aid kit, warning triangle and high-visibility vest
- Warning tone and light for unfastened seat belts front and rear
- Central locking without safe locking, with remote control and 2 remote folding keys



- Green heat-insulating glazing (sides and rear)
- Black trim strips on the side windows

**Extra equipment**

- "Comfort" telephone interface with inductive charging function (hands-free system)
- Anti-theft alarm system (with interior monitoring, backup horn and tow-away protection)
- Keyless Access locking and starting system
- Keyless locking and starting system "Keyless Access" with safe locking mechanism
- Navigation system "Discover Media" incl. "Streaming & Internet" (screen diagonal 20.3 cm - touchscreen - FM radio reception - dual tuner with phase diversity - MP3 playback - SD card slot - USB-C with Apple compatibility - output power 4x20 watts - map with 2D display - traffic sign display - telephone interface - 3-way sound control - DAB+ digital radio reception)
- Package: Mirror package (electrically folding exterior mirrors, auto-dimming on the driver's side, ambient lighting and passenger-side exterior mirror lowering - automatic headlight control with daytime running lights, "Leaving home" function and manual "Coming home" function - automatically dimming interior mirror - rain sensor)
- Park Assist (automatically steers the vehicle into parallel and perpendicular parking spaces and also parks out of parallel parking spaces)
- Heated windshield (laminated safety glass windshield, noise-reducing and heated)
- Lane change assistant "Side Assist" and parking assistant (warns the driver of vehicles that could pose a danger during lane changes by means of visual signals in the respective exterior mirror - monitors the area behind and beside the vehicle when reversing out of a parking space - issues visual and acoustic warning signals when a vehicle is detected crossing the parking space path - can initiate emergency braking to reduce the severity of a collision or to prevent a collision altogether)
- Package: Business Premium (Air Care Climatronic, combination filter - ACC stop & go, speed limiter, Front Assist - lumbar support front, driver's side electrically adjustable with massage function - multifunction leather steering wheel, paddle shifters - cargo net partition - heated windshield washer nozzles - headlight cleaning system - drawer under right front seat - microfleece seat center panels - heated top comfort seats front - emergency braking assistant "Front Assist" - height-adjustable front seats, ergoActive seat on the driver's seat - washer fluid warning light.)
- Package: Winter package (automatically heated front windshield washer nozzles - headlight cleaning system - heated front seats - washer fluid level warning lights)
- Rear View reversing camera (displays the rear of the vehicle in real time on the radio/navigation system display)

**Brief expert findings**

Documents submitted	At the time of the inspection, the vehicle registration certificate Part 2 (title) was available, but the vehicle registration certificate Part 1 (document) was not. (Copy)
VIN comparison	The vehicle identification number (VIN) was read from the vehicle and its conformity with the submitted documents was confirmed by the undersigned during the inspection.
Inspection	The inspection conditions were sufficient for the assessment of the vehicle. No lifting equipment or pit was available for inspecting the vehicle. Therefore, inspection of the vehicle's underside was only possible to a limited extent.
Test drive	No test drive/shunting maneuver was carried out during the inspection of the vehicle.
Engine function test	An engine test run was performed.

**Value reducing factors**

No.	Component group	Description
1	Equipment	Tirefit filler - Expired - Replace
2	Mudguard - right side	Mudguard - right side - dent(s) - Smooth repair work
3	2nd wheel set	1 alloy rim - Scratch(es) - Loss in value
4	Door - rear left side	Door - Scratch(es) - Smart repair
5	Instrument panel	Air nozzle - centre (Hinten) - Broken / torn - Replace
6	Door - front right side	Door - Deformed - Paint
7	Sill - right side	Sill - Deformed - Repair and paint



## Wear and tear

No.	Component group	Description
1	Trim / covers	Boot lid - interior trim - Scratch(es) - No deduction
2	Roof	Roof - dent(s) - No deduction
3	Side panel - rear left side	Side panel - dent(s) - No deduction
4	Vehicle glazing	Windscreen - Stone chips - No deduction
5	Rear bumper	Rear bumper - Scratch(es) - No deduction
6	Wheel / tyres	Alloy rim - rear right side (Kein Teil der Ausstattung) - Scratch(es) - No deduction

The vehicle shows signs of wear and tear commensurate with its age and use.

## Missing parts

### Description

Interior - Separation net

## Order/Scope of Order

An order was placed to prepare a sales report for the described vehicle. This report includes the following:

- Description of key vehicle information
- Documentation of equipment features  
(*Delivery by third-party service providers*)
- Documentation of damage, defects, missing parts
- Documentation of prior damage, unrepaired prior damage, repainting
- A brief visual or functional inspection of the equipment details, if possible.  
(*Functional testing of driver assistance systems is not included in the scope of services!*)
- a photographic documentation of the vehicle

## Basis for the order

This product is based on the guidelines for vehicle returns and valuations published by Alphabet Fleet GmbH. The expert makes the specific findings in each individual case objectively, within the framework of the prescribed standards, based on their own expertise.

The vehicle inspection takes place in a fully assembled, unassembled state.

Damage or defects that can only be detected during disassembly/diagnostic work or through further investigation remain within the realm of prognostic risk. An increased risk exists due to concealed defects caused by fraudulent misrepresentation and which were not identifiable by the expert.

Damage or defects resulting from normal use or wear and tear of the vehicle will be accepted in accordance with the applicable standard.

There was no explicit identification or monetary consideration of the expected features within the product.

Features which, in their nature and extent, slightly exceed normal use but do not constitute unacceptable damage, will be documented and indicated as signs of wear, if applicable.

Damage or defects that, according to the applicable standard, can no longer be attributed to normal use or wear and tear are listed under "Value Reducing Factors" in the product description.

Depending on the product specification, a monetary ID can be provided. If this takes place, the costs can be 100% d or pro rata depending on the vehicle's age and mileage.

## Previous damages

No apparent prior damage that had been repaired could be found on the vehicle.

## Comments

Der montierte Winterradsatz ist kein Bestandteil der Ausstattung.



Figure 1: Diagonal front (left)



Figure 2: Diagonal front (right)



Figure 3: Diagonal rear (left)



Figure 4: Diagonal rear (right)

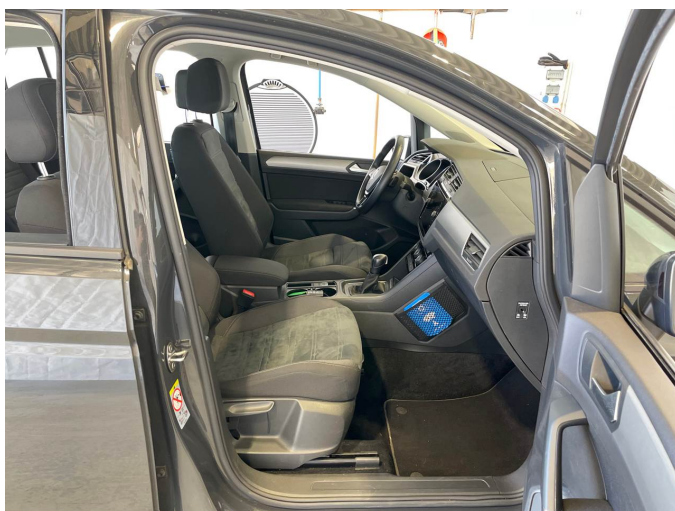


Figure 5: Interior - front



Figure 6: Interior - rear



Figure 7: Instrument cluster



Figure 8: Instrument panel



Figure 9: Interior 360° view



Figure 10: Cargo area

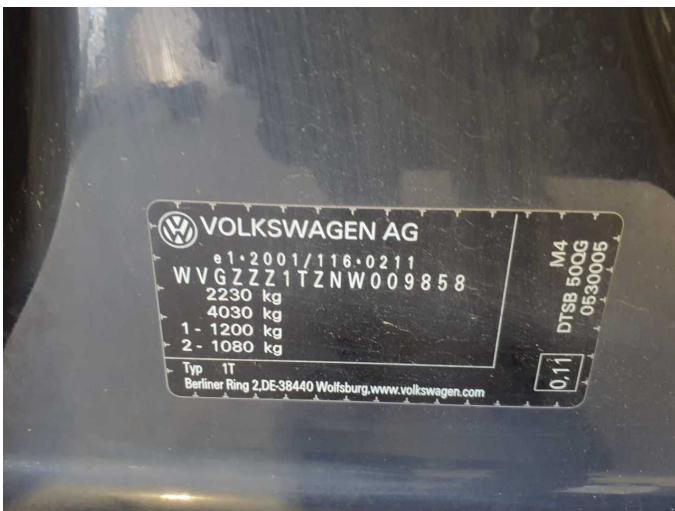


Figure 11: VIN



Figure 12: Mounted tyres

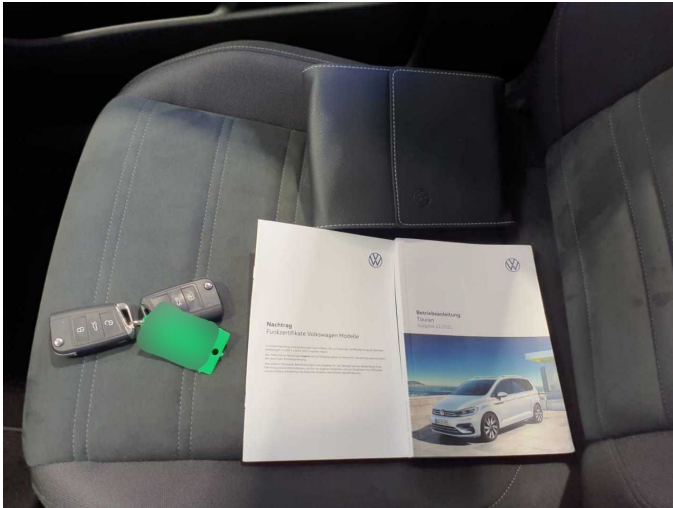


Figure 13: Documents



Figure 14: Additional tyres



Figure 15: Navigation



Figure 16: Misc.



Figure 17: Misc.



Figure 18: Misc.



Figure 19: Misc.



Figure 20: Misc.



Figure 21: Misc.



Figure 22: Misc.

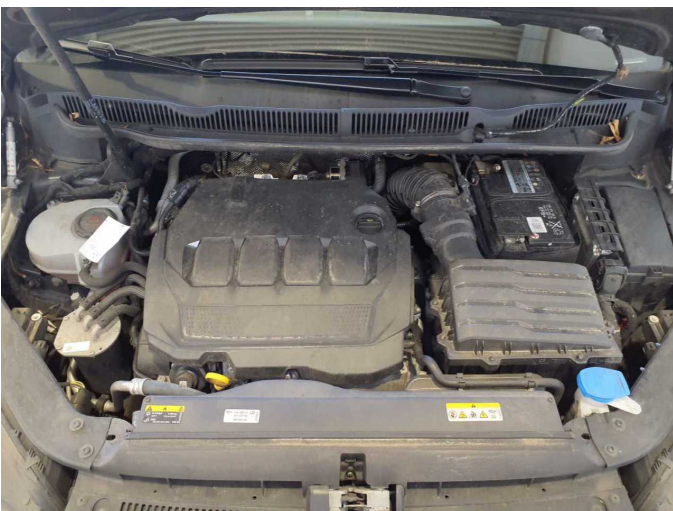


Figure 23: Misc.



Figure 24: Misc.



Figure 25: Misc.



Figure 26: Misc.



Damage 1: Equipment: Tirefit filler - Expired - Replace



Damage 2: Mudguard - right side: Mudguard - right side - dent(s) - Smooth repair work



Damage 2: Mudguard - right side: Mudguard - right side - dent(s) - Smooth repair work



Damage 2: Mudguard - right side: Mudguard - right side - dent(s) - Smooth repair work



**Damage 3:** 2nd wheel set: 1 alloy rim - Scratch(es) - Loss in value



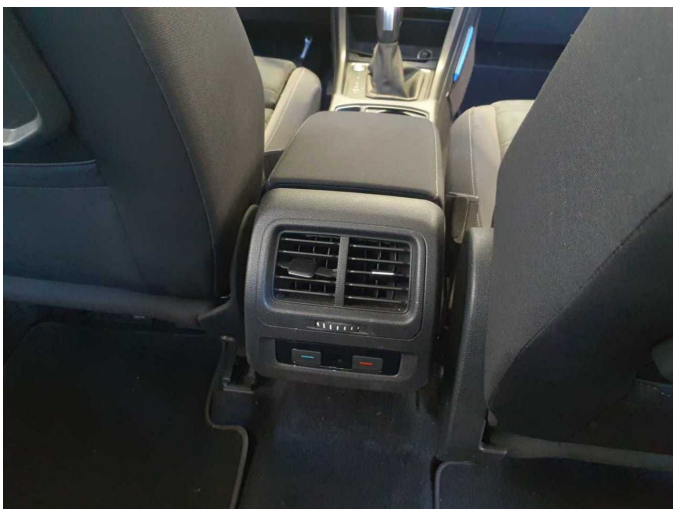
**Damage 3:** 2nd wheel set: 1 alloy rim - Scratch(es) - Loss in value



**Damage 4:** Door - rear left side: Door - Scratch(es) - Smart repair



**Damage 4:** Door - rear left side: Door - Scratch(es) - Smart repair



**Damage 5:** Instrument panel: Air nozzle - centre (Hinten) - Broken / torn - Replace



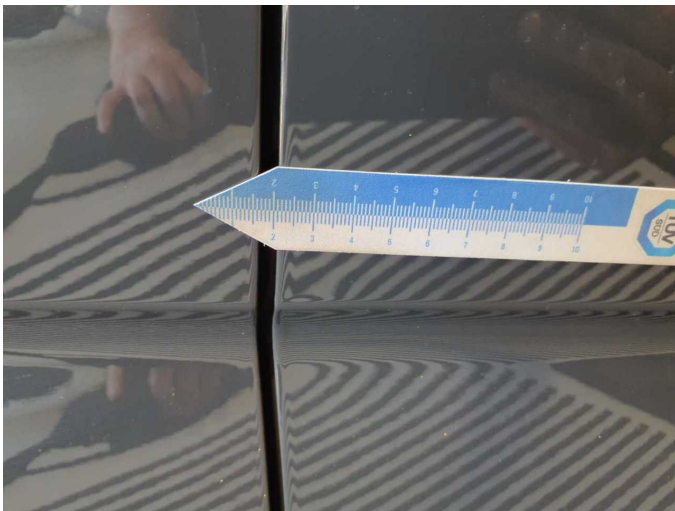
**Damage 5:** Instrument panel: Air nozzle - centre (Hinten) - Broken / torn - Replace



**Damage 6:** Door - front right side: Door - Deformed - Paint



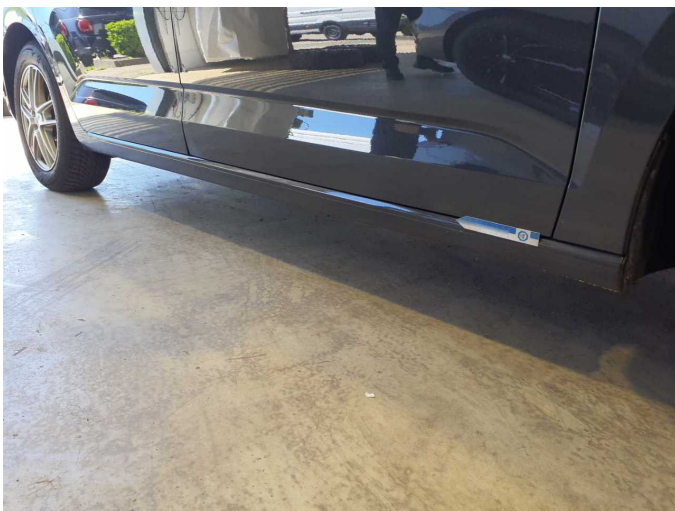
**Damage 6:** Door - front right side: Door - Deformed - Paint



**Damage 6:** Door - front right side: Door - Deformed - Paint



**Damage 6:** Door - front right side: Door - Deformed - Paint



**Damage 7:** Sill - right side: Sill - Deformed - Repair and paint



**Damage 7:** Sill - right side: Sill - Deformed - Repair and paint



**Damage 7:** Sill - right side: Sill - Deformed - Repair and paint



**Damage 7:** Sill - right side: Sill - Deformed - Repair and paint



**Damage 7:** Sill - right side: Sill - Deformed - Repair and paint



# Wartungshistorie

(gemäß Auftraggeber Informationen)

Fahrgestellnummer: WVGZZZ1TZNW009858

Hersteller / Modell: VOLKSWAGEN VW Touran 2.0 TDI SCR DSG Comfortline

Datum	KM-Stand	Beschreibung
05.03.2026	153.713	Motoröl b. Wartung; Ölfilter ern; Regelwartungsdienst; Systemtest/ Eigendiagnose; Wartung Sonstiges
13.08.2025	124.141	Getriebeöl ern/prüfen; Luftfiltereinsatz ern; Motoröl b. Wartung; Ölfilter ern; Regelwartungsdienst; Wartung Sonstiges
28.04.2025	108.237	AU; Bremse Sonstiges; Bremsklötze vorne
09.01.2025	92.502	Bremse Sonstiges; Bremsklötze hinten; Kraftstofffilter ern; Motoröl b. Wartung; Ölfilter ern; Regelwartungsdienst; Systemtest/Eigendiagnose; Wartung Sonstiges
30.04.2024	59.722	Bremsflüssigkeit; Bremsflüssigkeit ern; Motoröl b. Wartung; Ölfilter ern; Regelwartungsdienst; Wartung Sonstiges
29.09.2023	29.709	Motoröl b. Wartung; Ölfilter ern; Regelwartungsdienst; Wartung Sonstiges
17.03.2023	7.543	Motoröl b. Wartung; Ölfilter ern; Ölwechsel; Wartung Sonstiges