

Expertise

Protocol number: 46227660
Order No. / Reference: 26503701
Inspection date: 26 Jun 2026

Manufacturer: Ford

Model: Transit Custom 300 L1H2 LKW VA Trend

VIN: WF0YXXTTGYMC01599



Vehicle details

Manufacturer / Type / Model / Equipment

Ford Transit Custom 300 L1H2 LKW VA Trend

Vehicle Identification number WF0YXXTTGYMC01599

Mileage (Read) 26,306 km

First registration 16 Dec 2021

Number of holders 1

Power / Engine displacement 96 kw / 1,996 ccm

Fuel type / Cylinder Diesel / 4

Gearbox / Number of gears Manual / 6

Type of drive Front drive

Type of vehicle Van

Colour / colour code Grey Metallic

Doors / Seats 4 / 3

Upholstery type Cloth

Colour of upholstery Black-Grey



Vehicle details

Maintenance booklet / proof	digital proof / complete	Next maintenance in	0 km
Last service on / at	05/2024 at 14,056 km		
Key is / should be	2 / 2	FZG documents	ZB#2 (B) was available (copy), ZB#1 (S) was not available.
		Letter No.	GH371669
Previous damage / Accident	None detectable	Repainting	None detectable
Inspection conditions	sufficient	Lifting equipment / pit	yes
Test drive	Not performed	Engine function test	Performed
Manufacturer key number/ type code number	8566 / BMU 06822		
Emission standard	EURO6;WLTP;AR;PI/CI;N1 III, N2	fine dust sticker	
Permitted total weight	3,000 kg	Empty weight	

Tyres

Mounted tyres

#	Tyre size	Type of tyre	Manufacturer	Tread depth
1)	215/65 R15 104T	Winter tyres on Steel rim with wheel cover	Goodyear	7mm / 7mm
2)	215/65 R15 104T	Winter tyres on Steel rim with wheel cover	Goodyear	7mm / 7mm

Additional tyres

#	Tyre size	Type of tyre	Manufacturer	Tread depth
1)	215/65 R15 104T	Summer tyres on Steel	Continental	7mm / 7mm
2)	215/65 R15 104T	Summer tyres on Steel	Continental	7mm / 7mm

Replacement

Typ	Tyre size	Type of tyre	Manufacturer	Tread depth
E	215/65 R15 104T	Summer tyres on Steel	Continental	6 mm

Legend: Tread depth information for the left tire is listed first, for the right tire it is listed second on the axle in the direction of travel.



Equipment

Standard equipment

- 1 battery
- Anti-lock braking system with electronic brake force distribution (EBD)
- On-board computer (with consumption and mileage information (e.g. remaining range) and outside temperature display)
- Double-leaf rear door with 180° opening angle (without window)
- Electronic Stability Program (ESP) with Traction Control System (TCS) (Hill Start Assist - Crosswind Assist - Emergency Brake Assist - Rollover Protection)
- FordPass Connect (including live traffic information and Wi-Fi hotspot: Information about the current status or location of the vehicle, as well as control of selected vehicle functions via smartphone with the FordPass app. Real-time traffic information (in conjunction with audio systems 24 and 25). Wi-Fi hotspot (up to 4G/LTE, for up to 10 mobile devices). Further information about FordPass Connect can be found at <https://www.ford.de/fordpass-connect>.)
- Front air conditioning (including dust and pollen filter)
- Fuel tank 70 l
- Cargo area floor: Vinyl floor covering, sealed, "Easy Clean"
- Steering column, adjustable in height and reach
- Package: Style color package (front and rear bumpers and exterior mirror caps painted in body color)
- Radio: Audio system 13 additionally with DAB/DAB+ (Radio (FM/AM) - Four speakers, antenna - Audio remote control on the steering wheel - Bluetooth, USB port and hands-free system - MyFord Dock - additionally with digital radio reception DAB/DAB+ (Digital Audio Broadcasting))
- Sliding door entry light automatically illuminates when the door is opened
- Sliding door: Sliding door, right
- Side protection strips
- Power steering
- Seats: Seat Package 13 - Partition (load-through flap), without window (Custom Truck Trend) (Driver's seat, 4-way adjustable (forward/backward, backrest, seat cushion tilt, height) - Double passenger seat with storage compartment under individually foldable seat cushions - Height-adjustable headrests - Integrated tray in the double passenger seat (fold-out) - Interior armrest for driver - Manual lumbar support (driver's seat) - TREND seat cover: fabric - Partition (load-through flap), without window)
- Driver's side airbag
- Exterior mirrors, electrically adjustable and heated (with integrated turn signals)
- roof, high
- Headliner in driver's cab (up to the partition wall to the cargo area)
- Tachometer
- Third brake light
- Front electric windows (with quickdown/up function for driver's side)
- Ford Easy Fuel (comfortable fuel filler cap and misfuelling protection)
- Warranty: 2-year Ford new car warranty including Ford Assistance mobility guarantee
- Generator, 240 A
- Cruise control system including imitation leather steering wheel (with adjustable speed limiter)
- Transmission: 6-speed transmission
- Lockable glove compartment with lid
- Interior lighting with delay function (with reading lights at the front)
- Cargo area lighting with activatable switch-off delay (after 30 minutes)
- Emergency brake assist including emergency brake light
- Front and rear parking pilot system including fog lights
- Particulate filter: diesel particulate filter
- Wheel trims
- Wheels/Tires: Spare wheel, steel wheel
- Wheels: Steel wheels 6.5 J x 15 with 215/65 R 15 tires (6.5 J x 15 with 215/65 R 15 tires)
- Headlights: Halogen projector headlights (with LED daytime running lights and fog lights with static cornering lights)
- Mud flaps front and rear
- Half-height side wall cladding
- Seat belts (front seat belt tensioners and force limiters - warning system for unfastened driver's seat belt)
- Start-stop system
- Power outlet: 12-volt connection
- Lashing eyes 8
- Immobiliser
- Heat-insulating glazing, lightly tinted
- Central locking with remote control
- Auxiliary heater, electric
- Second key with remote control



Extra equipment

- Double-wing rear doors with 90° opening angle (with window) (with heated rear windows)
- LED lights in the cargo area
- Package: Cargo area protection package (side wall lining, high, hardboard - vinyl floor lining "Easy Clean")
- Package: Smoker (cigarette lighter and ashtray)
- Paint finish: Metallic
- Parking heater, programmable, with remote control
- Radio: Audio System 24: Ford audio system including Ford SYNC 3 with AppLink, DAB/DAB+, navigation system. (Radio (FM/AM) 8" touchscreen multifunction display (20.32 cm), 4 speakers, FordPass Connect Wi-Fi hotspot, integrated control panel and audio remote control on the steering wheel, Ford SYNC 3 with touchscreen (hands-free system with voice control, SMS readout/sending function, Bluetooth, Emergency Assistance...), AppLink (advanced voice control, privacy mode, Android Auto and Apple CarPlay support, capacitive touchscreen technology,...), dynamic navigation, lane guidance, road map for Western Europe)
- Rear window wiper (including windshield washer nozzle and automatic activation when reverse gear is engaged)
- Seats: Seat Package 16A - Partition with window (Custom Truck Trend) (Driver's seat, 4-way adjustable (forward/backward, backrest, seat cushion tilt, height) - Single passenger seat, 4-way adjustable (forward/backward, backrest, seat cushion tilt, height) - Height-adjustable headrests - Heated driver's seat - Heated passenger seat - Interior armrest for driver/passenger - Manual lumbar support (driver's seat) - Passenger and side airbags and front head/shoulder airbags - TREND seat cover: fabric - Partition with window)
- Sliding door: Sliding door, right (also with window, fixed)
- Visibility Package III (Electrically adjustable and heated exterior mirrors - Heated windscreen - Windscreen washer fluid sensor - Electrically folding exterior mirrors - Rain-sensing wipers - Automatic headlights with day/night sensor - Lane Keeping Assist with Driver Alert and High Beam Assist - Rearview camera - Connected Radio audio system, DAB/DAB+, FordPass Connect 8" touchscreen, antenna control panel and audio remote control on the steering wheel - Android Auto and Apple CarPlay support)

Brief expert findings

Documents submitted	At the time of the inspection, the vehicle registration certificate Part 2 (title) was available, but the vehicle registration certificate Part 1 (document) was not. (Copy)
VIN comparison	The vehicle identification number (VIN) was read from the vehicle and its conformity with the submitted documents was confirmed by the undersigned during the inspection.
Inspection	The inspection conditions were sufficient for the assessment of the vehicle. Lifting equipment and/or a pit were available for examining the vehicle.
Test drive	No test drive/shunting maneuver was carried out during the inspection of the vehicle.
Engine function test	An engine test run was performed.

Value reducing factors

No.	Component group	Description
1	Roof	Aerial (Kabelstrang in Verbindung mit Dach entfernen) - Perform
2	Rear bumper	Rear bumper - Scratch(es) - Smart repair
3	Front bumper	Front bumper - Scratch(es) - Smart repair
4	Boot lid / rear door	Rear door - right side - Dent / paintcoat damage - Smart repair
5	Engine	Engine - Leaking - Perform diagnosis
6	Misc.	Inspection / maintenance - Due - Perform
7	Body	Partition wall - Holes - Replace
8	Roof	Roof - Differs from the original configuration - Repair and paint

Wear and tear

No.	Component group	Description
1	Rear bumper	Rear bumper (unpainted) - Scratch(es) - No deduction
2	Bonnet	Bonnet - Stone chips - No deduction

The vehicle shows signs of wear and tear commensurate with its age and use.



Order/Scope of Order

An order was placed to prepare a sales report for the described vehicle. This report includes the following:

- Description of key vehicle information
- Documentation of equipment features
(Delivery by third-party service providers)
- Documentation of damage, defects, missing parts
- Documentation of prior damage, unrepaired prior damage, repainting
- A brief visual or functional inspection of the equipment details, if possible.
(Functional testing of driver assistance systems is not included in the scope of services!)
- a photographic documentation of the vehicle

Basis for the order

This product is based on the guidelines for vehicle returns and valuations published by Alphabet Fleet GmbH. The expert makes the specific findings in each individual case objectively, within the framework of the prescribed standards, based on their own expertise.

The vehicle inspection takes place in a fully assembled, unassembled state.

Damage or defects that can only be detected during disassembly/diagnostic work or through further investigation remain within the realm of prognostic risk. An increased risk exists due to concealed defects caused by fraudulent misrepresentation and which were not identifiable by the expert.

Damage or defects resulting from normal use or wear and tear of the vehicle will be accepted in accordance with the applicable standard.

There was no explicit identification or monetary consideration of the expected features within the product.

Features which, in their nature and extent, slightly exceed normal use but do not constitute unacceptable damage, will be documented and indicated as signs of wear, if applicable.

Damage or defects that, according to the applicable standard, can no longer be attributed to normal use or wear and tear are listed under "Value Reducing Factors" in the product description.

Depending on the product specification, a monetary ID can be provided. If this takes place, the costs can be 100% or pro rata depending on the vehicle's age and mileage.

Previous damages

No apparent prior damage that had been repaired could be found on the vehicle.



Figure 1: Diagonal front (left)



Figure 2: Diagonal front (right)



Figure 3: Diagonal rear (left)



Figure 4: Diagonal rear (right)

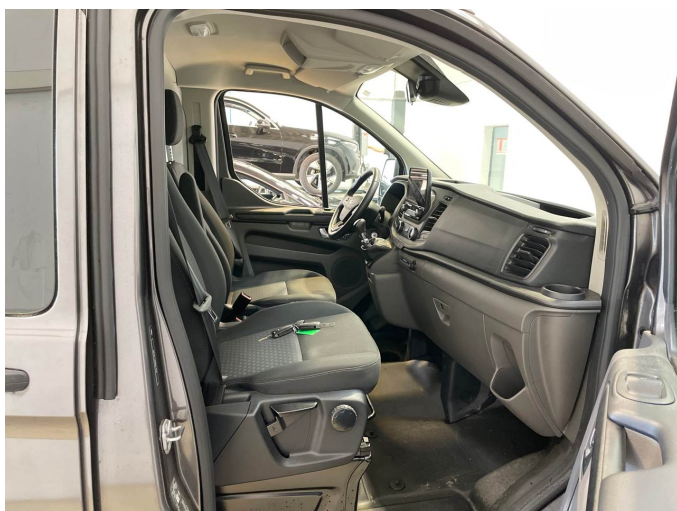


Figure 5: Interior - front



Figure 6: Interior - rear

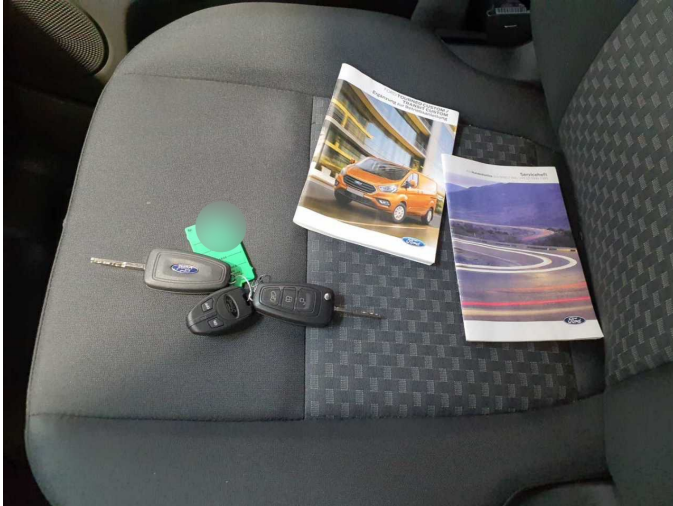


Figure 13: Documents



Figure 14: Additional tyres



Figure 15: Additional tyres



Figure 16: Additional tyres



Figure 17: Navigation



Figure 18: Misc.



Figure 19: Misc.

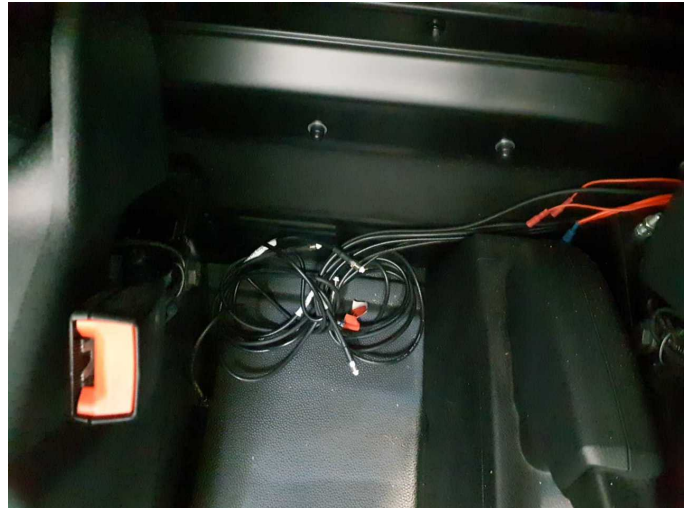


Figure 20: Misc.



Figure 21: Misc.



Figure 22: Misc.



Figure 23: Misc.

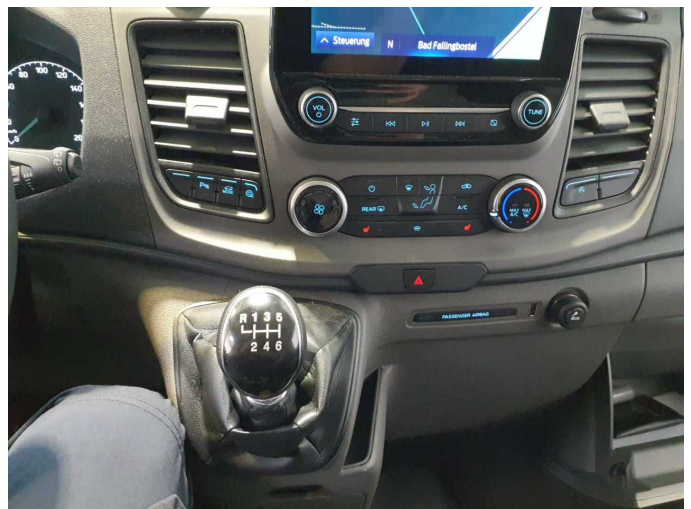


Figure 24: Misc.



Figure 25: Misc.



Figure 26: Misc.



Figure 27: Misc.



Figure 28: Misc.



Figure 29: Misc.



Figure 30: Misc.



Figure 31: Misc.



Figure 32: Misc.



Figure 33: Misc.

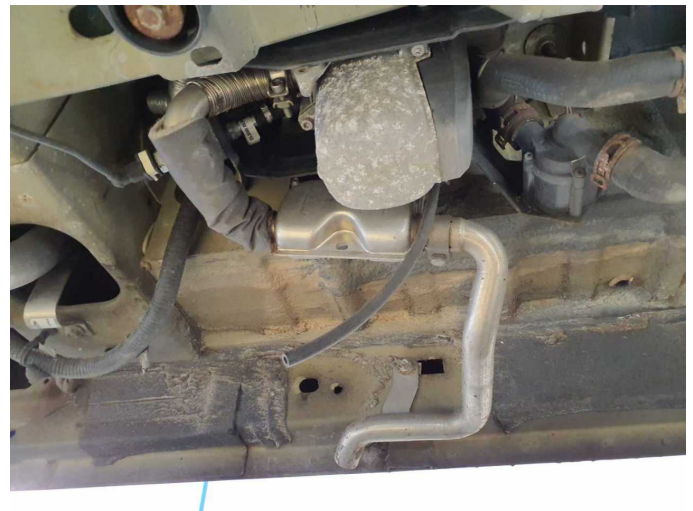


Figure 34: Misc.



Figure 35: Misc.

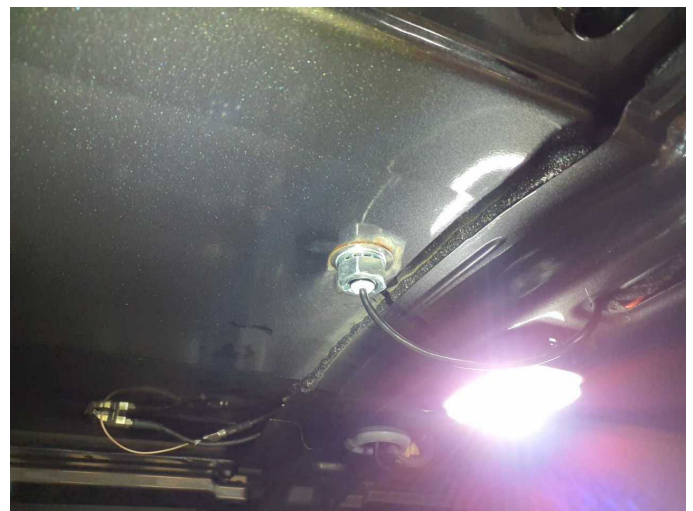
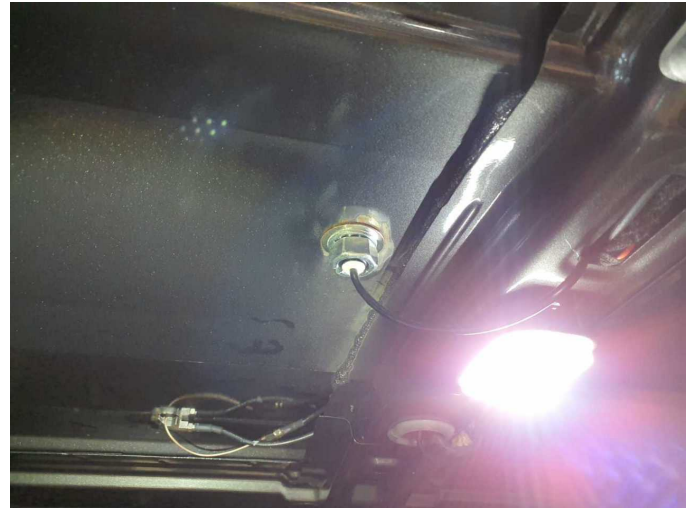


Figure 36: Misc.



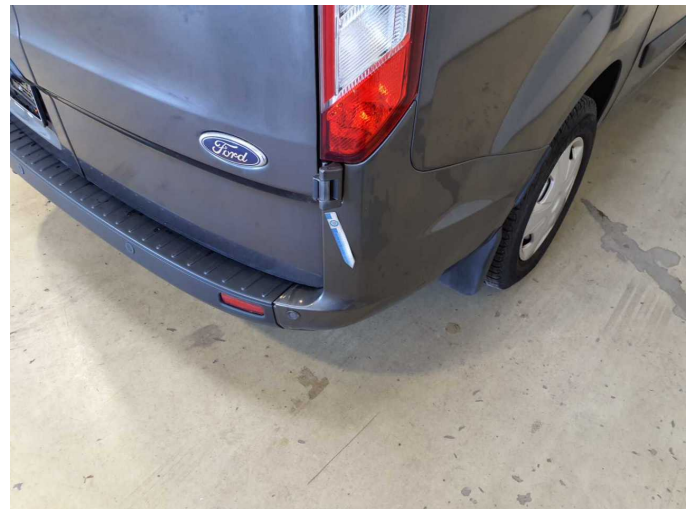
Figure 37: Misc.



Damage 1: Roof: Aerial (Kabelstrang in Verbindung mit Dach entfernen) - Perform



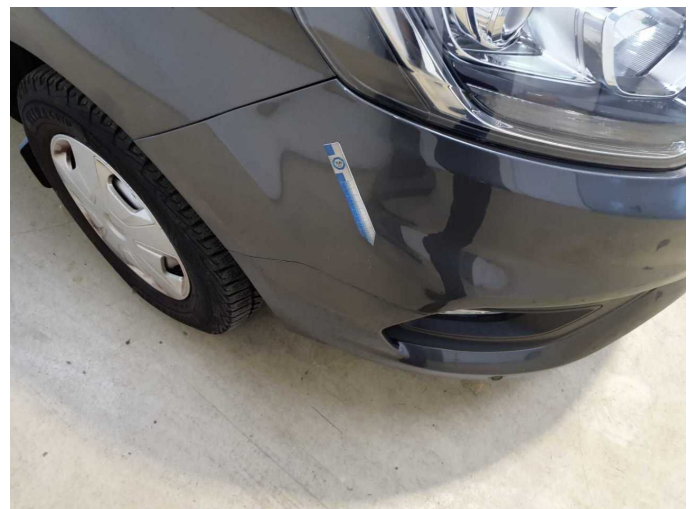
Damage 1: Roof: Aerial (Kabelstrang in Verbindung mit Dach entfernen) - Perform



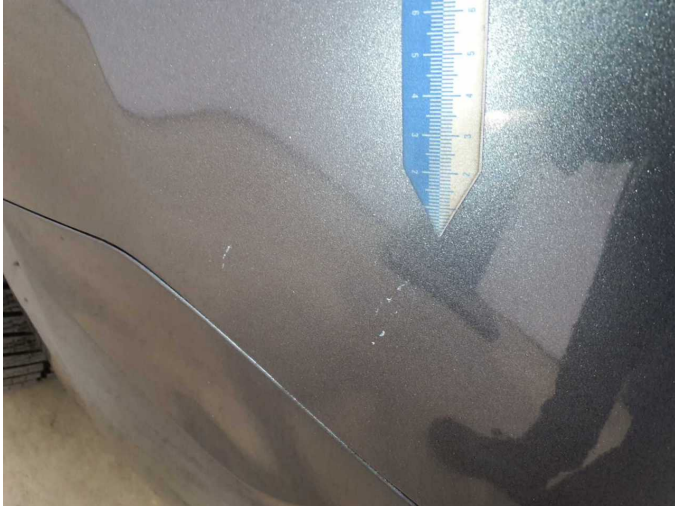
Damage 2: Rear bumper: Rear bumper - Scratch(es) - Smart repair



Damage 2: Rear bumper: Rear bumper - Scratch(es) - Smart repair



Damage 3: Front bumper: Front bumper - Scratch(es) - Smart repair



Damage 3: Front bumper: Front bumper - Scratch(es) - Smart repair



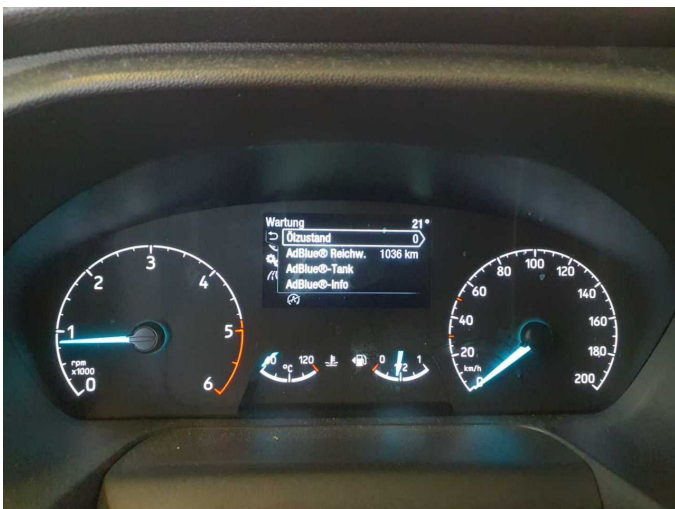
Damage 4: Boot lid / rear door: Rear door - right side - Dent / paintcoat damage - Smart repair



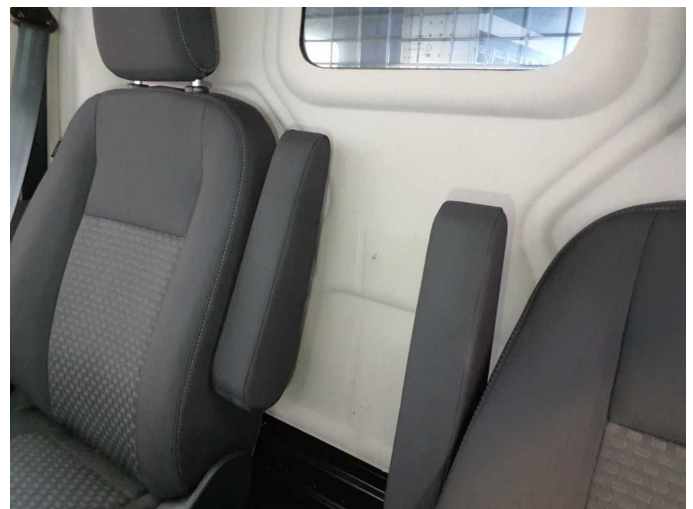
Damage 4: Boot lid / rear door: Rear door - right side - Dent / paintcoat damage - Smart repair



Damage 5: Engine: Engine - Leaking - Perform diagnosis



Damage 6: Misc.: Inspection / maintenance - Due - Perform



Damage 7: Body: Partition wall - Holes - Replace



Damage 7: Body: Partition wall - Holes - Replace



Damage 7: Body: Partition wall - Holes - Replace



Damage 8: Roof: Roof - Differs from the original configuration - Repair and paint



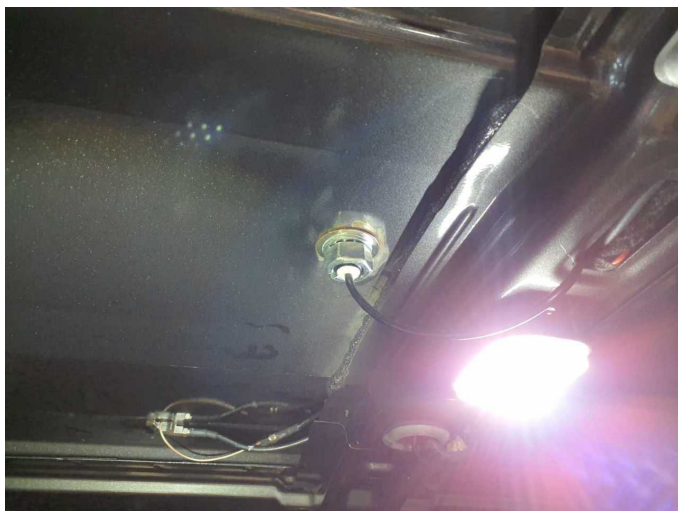
Damage 8: Roof: Roof - Differs from the original configuration - Repair and paint



Damage 8: Roof: Roof - Differs from the original configuration - Repair and paint



Damage 8: Roof: Roof - Differs from the original configuration - Repair and paint



Damage 8: Roof: Roof - Differs from the original configuration - Repair and paint



Damage 8: Roof: Roof - Differs from the original configuration - Repair and paint



Wartungshistorie

(gemäß Auftraggeber Informationen)

Fahrgestellnummer: WF0YXXTTGYMC01599

Hersteller / Modell: FORD FORD Transit Custom 300 L1H2 LKW VA Trend

Datum	KM-Stand	Beschreibung
16.05.2024	14.056	Bremsflüssigkeit; Bremsflüssigkeit ern; Motoröl b. Wartung; Ölfilter ern; Regelwartungsdienst; Wartung Sonstiges
11.03.2024	12.979	AU