

## Expertise

Protocol number: 46306058  
Order No. / Reference: 26530414  
Inspection date: 2 Jul 2026

Manufacturer: Audi

Model: A5 Sportback 35 TDI S tronic S line

VIN: WAUZZZF54NA029228



### Vehicle details

#### Manufacturer / Type / Model / Equipment

Audi A5 Sportback 35 TDI S tronic S line

**Vehicle Identification number** WAUZZZF54NA029228

**Mileage (Read)** 164,619 km

**First registration** 30 Mar 2022

**Number of holders** 1

**Power / Engine displacement** 120 kw / 1,968 ccm

**Fuel type / Cylinder** Hybrid Diesel / E / 4

**Gearbox / Number of gears** Automatic / 7

**Type of drive** Front drive

**Type of vehicle** Saloon car

**Colour / colour code** Daytonagrau Perleffekt

**Doors / Seats** 5 / 4

**Upholstery type** Cloth / leather combination

**Colour of upholstery** Black



Vehicle details			
<b>Maintenance booklet / proof</b>	digital proof / complete	<b>Next maintenance in</b>	3,700 km
<b>Last service on / at</b>	12/2025 at 153,300 km		
<b>Key is / should be</b>	2 / 2	<b>FZG documents</b>	ZB#2 (B) was available (copy), ZB#1 (S) was not available.
		<b>Letter No.</b>	GJ045498
<b>Previous damage / Accident</b>	Detectable	<b>Repainting</b>	Detectable
<b>Inspection conditions</b>	sufficient	<b>Lifting equipment / pit</b>	yes
<b>Test drive</b>	Not performed	<b>Engine function test</b>	Performed
<b>Manufacturer key number/ type code number</b>	0588 / BPN 00632		
<b>Emission standard</b>	EURO6;WLTP;AP;PI/CI; M, N1 I	<b>fine dust sticker</b>	
<b>Permitted total weight</b>	2,120 kg	<b>Empty weight</b>	

## Tyres

Mounted tyres				
#	Tyre size	Type of tyre	Manufacturer	Tread depth
1)	265/30 R20 94Y	Summer tyres on Light alloy	Pirelli	5mm / 5mm
2)	265/30 R20 94Y	Summer tyres on Light alloy	Pirelli	5mm / 5mm
Additional tyres				
#	Tyre size	Type of tyre	Manufacturer	Tread depth
1)	225/50 R17 98H	Winter tyres on Light alloy	Pirelli	6mm / 6mm
2)	225/50 R17 98H	Winter tyres on Light alloy	Pirelli	6mm / 6mm
Replacement				
Typ	Tyre size	Type of tyre	Manufacturer	Tread depth
	Tirefit	Expiration date 04/2027		

**Legend: Tread depth information for the left tire is listed first, for the right tire it is listed second on the axle in the direction of travel.**



## Equipment

### Standard equipment

- AdBlue tank (12 liters)
- Airbag: Front side airbags and head airbag system
- Drive slip control
- Audi drive select
- Audi pre sense city
- Exterior mirror housings in body color
- third brake light
- Tachometer
- Rear parking sensors
- Electromechanical parking brake
- Electronic Stability Control (ESC)
- Suspension (sports suspension)
- Remote key, without safe lock
- Luggage compartment lid, electrically opening and closing
- Transmission: S tronic (7-speed)
- Interior mirror dimming
- ISOFIX and Top Tether child seat anchors for the outer rear seats
- LED taillights
- Mild hybrid
- Non-smoking version
- Wheel: Tire pressure monitoring system
- Wheel: Tires optimized for rolling resistance, speed-limited
- Radio accessories: 8 speakers
- Rear seat backrest foldable
- Seat belts: Three-point automatic seat belts for all seats
- Start-stop system
- First aid kit with warning triangle
- Electronic immobilizer
- Green thermal insulation glazing
- Airbag for driver and front passenger
- Anti-lock braking system (ABS)
- Audi connect emergency call & service including vehicle control
- Electrically adjustable/heated exterior mirrors
- Outdoor temperature display
- Diesel particulate filter (DPF) with DeNox catalyst and AdBlue tank
- Door sill trims with aluminum inlay at the front, illuminated, with S lettering
- Driver information system
- Electric front windows
- front and rear floor mats
- Cruise control system with adjustable speed limiter
- Interior lighting
- Manual child lock
- boot floor mat
- Headrests (4)
- LED headlights
- front center armrest
- Package Gloss
- Wheel: Tire repair kit
- Radio: MMI Radio Plus
- Radio accessories: Data module Europe
- Electromechanical power steering
- Front seats (standard seats)
- Phone: Bluetooth interface
- Glazing: Windscreen in heat-insulating and acoustic glazing



## Extra equipment

- AdBlue tank (24 liters)
- Decorative inlays in matt brushed aluminum (for dashboard, door panels and center console)
- Deletion of model designation and performance/technology lettering
- ISOFIX child seat attachment for the front passenger seat (with deactivation switch for the passenger airbag - child safety lock, electrically operated)
- Comfort automatic climate control 3-zone (in addition to the automatic climate control: - climate control unit with large TFT display and capacitive rocker switches - electronically regulates the air temperature and distribution individually for driver and front passenger - additional climate control unit for setting the rear passenger compartment temperature in the rear center console - automatic recirculation control via air quality sensor, with dust and odor-removing allergen filter - ventilated glove compartment - dust and odor-removing cabin air filter - residual heat utilization)
- Paint finish: Pearl effect
- Steering wheel: Leather steering wheel in a 3-spoke design with multifunction plus (height and reach of the leather steering wheel are manually adjustable. For convenient operation of the extensive standard and optional infotainment features, the steering wheel is equipped with 12 multifunction buttons. Includes a leather gearshift/selector lever knob and a leatherette handbrake grip.)
- Storage and luggage compartment package (Sportback) (flexible transport of items and comfort on journeys; consisting of: - storage net on the back of the front seat backrests - cupholder in the rear center armrest - storage compartment on the driver's side - lockable glove compartment in the luggage compartment: - luggage compartment net - net in recesses on the left and right - tension strap on the right)
- Business package (front seat heating - comfort package mirrors - infotainment package smartphone - navigation package - leather steering wheel in 3-spoke design with multifunction plus)
- S line interior package (sports seats in front - S line seat covers in black fabric/leather combination with S embossing on the backrests of the front seats - 3-spoke leather steering wheel with multifunction plus including steering wheel grips in perforated leather and S emblem; steering wheel and gearshift boot with contrast stitching, color-coordinated - headliner in black fabric - decorative inlays in matt brushed aluminum with accent surfaces in gloss black - pedals and footrest in stainless steel - floor mats front and rear with contrast stitching)
- Panoramic glass roof (electric operation for tilting and opening the glass element, automatic opening and closing, tinted glass insert with continuously adjustable electric sunshade. Comfort opening and closing from the outside via the remote key; the extra-large glass surface provides a pleasant, light-flooded interior ambience, good acoustics when the roof is tilted or fully open. Integrated wind deflector reduces wind noise when the roof is open.)
- Audi virtual cockpit with 12.3" color display (Innovative, fully digital instrument cluster for flexible and needs-based display of relevant information according to driver requirements: speed/RPM, map display, Audi connect services, radio/media information, etc.; the VIEW button on the multifunction steering wheel allows switching between two different-sized displays of the round instruments. The display with smaller instruments enables large, clear graphics of the on-board computer and MMI content)
- Comfort key with sensor-controlled luggage compartment unlocking (wireless communication between the key and the vehicle allows opening the doors and luggage compartment lid, and locking via the sensors on the door handles. The comfort key simply needs to be carried with the vehicle. The engine is started and stopped using the engine start/stop button. The luggage compartment lid can also be conveniently unlocked with a foot gesture by kicking the rear of the vehicle if your hands are full.)
- Fuel tank (54 liters)
- LED matrix headlights with dynamic turn signals front and rear (daytime running lights, low beam, high beam, position lights, turn signals, cornering lights, static curve lighting (supplementing lateral illumination in tight curves and when turning), all-weather light (to reduce glare in poor visibility conditions), maneuvering light (illuminating the swivel area when reversing), motorway light (extended beam range from a speed of 110 km/h), automatic dynamic headlight range control)
- Driving Assistance Package (Audi active lane assist - Audi adaptive cruise control - Audi pre sense rear and basic - Traffic jam assist - Predictive efficiency assist - Evasive steering assist - Left turn assist - High beam assist - Driver information system with color display - Camera-based traffic sign recognition - Lane change warning)
- Parking Assistance Package (Parking Aid Plus - Parking Assist - Rearview Camera)
- Infotainment package Smartphone in conjunction with navigation package (Audi phone box light - Audi smartphone interface - USB charging interface for rear passengers (additional 2 USB-A charging interfaces for rear passengers in the rear center console))
- S line competition package (black plus styling package (incl. Audi rings front and rear and model designation on the rear in black) - radiator grille in matte titanium black - blade below radiator grille in high-gloss black - Audi Sport wheels, 5-V-spoke star, matte titanium grey, polished, 9.0 J x 20, tires 265/30 R 20 - sporty rear spoiler in high-gloss black)
- Package: Ambient Lighting Package Plus (in addition to the Ambient Lighting Package: interactive and individual color profile. The interactive color profile is controlled by the Audi drive select modes. The individual color profile offers a choice of 30 colors. The color adjustments apply to the following contour and ambient lighting elements: - Rear footwell lighting - Front cupholders (multicolor) - Front/rear ambient door lighting (multicolor) - Front/rear door contour lighting (multicolor))



- Upholstery: Fabric Sequenz/leather with S line embossing in the backrests of the front seats (seat center section of the front seats and the two outer rear seats in fabric Sequenz black - seat side bolsters, headrest center sections and middle seat in leather black with contrasting stitching - with S embossing in the backrests of the front seats)
- Three-seater rear seating system (distinctive outer rear seats, visually adapted to the front seats and an additional middle seat - 3 rear L-shaped headrests, manually height-adjustable for better rear visibility; rear seat backrest split in a 40:20:40 ratio or fully foldable)
- Glazing: Privacy glazing (tinted windows) (rear window, rear door and side windows tinted)
- Wheel: Audi new car tire warranty (36-month term from vehicle handover to the first customer)
- Wheel: Audi Sport light alloy wheels, 5-arm flag, platinum grey matt (9.0 J x 20 with tires 265/30 R 20)
- Radio accessories: Audi sound system (10 speakers including center speaker and subwoofer - 6-channel amplifier - total output of 180 watts)
- Telephone: Audi Phone Box (Up to two smartphones can be paired with the vehicle simultaneously via Bluetooth, allowing you to either play music through the vehicle or make phone calls from one of the two smartphones. It connects to the vehicle's antenna, improving both reception and call quality. Additionally, the smartphone can be charged wirelessly using the Qi standard or via USB if it is still in the storage compartment.)

### Brief expert findings

Documents submitted	At the time of the inspection, the vehicle registration certificate Part 2 (title) was available, but the vehicle registration certificate Part 1 (document) was not. (Copy)
VIN comparison	The vehicle identification number (VIN) was read from the vehicle and its conformity with the submitted documents was confirmed by the undersigned during the inspection.
Inspection	The inspection conditions were sufficient for the assessment of the vehicle. Lifting equipment and/or a pit were available for examining the vehicle.
Test drive	No test drive/shunting maneuver was carried out during the inspection of the vehicle.
Engine function test	An engine test run was performed.

### Value reducing factors

No.	Component group	Description
1	Body	Body - Glued / labelled - De-glue / neutralise
2	Front axle	Axles / undercarriage (wegen der beschädigten Felgen) - Specify findings - Measure
3	Sill - right side	Trim - Scratched - Paint
4	Wheel / tyres	Alloy rim - rear left side (Materialabtrag) - Scratched - Loss in value
5	Wheel / tyres	Alloy rim - rear right side (Materialabtrag) - Scratched - Loss in value
6	Wheel / tyres	Alloy rim - front left side (Materialabtrag) - Scratched - Loss in value
7	Wheel / tyres	Alloy rim - front right side (Materialabtrag) - Scratched - Loss in value
8	Door - front left side	Door (Einschlüsse) - Unprofessionally repaired - Repair and paint
9	Bonnet	Bonnet - Dent / paintcoat damage - Repair and paint
10	Front bumper	Front bumper (Blende) - Scratched - Paint
11	Vehicle glazing	Windscreen (Rissbildung) - Stone chips - repair according to calculation

### Wear and tear

No.	Component group	Description
1	Misc.	Main inspection - No evidence - No deduction
2	Seat - front	Seat cover - left side (Wange) - Abrasion - No deduction
3	2nd wheel set	2 alloy rims - Scratched - No deduction
4	Mudguard - left side	Mudguard - left side - Scratch(es) - No deduction
5	Door - front left side	Door handle - outside - Scratch(es) - Smart repair
6	Trim / covers	Brightware / decorative strip - Scratch(es) - No deduction

The vehicle shows signs of wear and tear commensurate with its age and use.



## Previous damages

No.	Previous damage	Extent of damage (Net)
1	Side right, Provided by user / customer, from 23 Oct 2025	3.874,47 €
2	Side - left, Provided by user / customer, from 2 Jan 2026	5.034,70 €

## Repainting

No.	Repainting
1	Side panel - rear left side, Professionally carried out, Invoice of repair done Non-existent
2	Side panel - rear right side, Professionally carried out, Invoice of repair done Non-existent
3	Door - front left side, Unprofessionally carried out, Invoice of repair done Non-existent

## Paint coat thickness measurement

Side panel - rear left side	173 µm	Side panel - rear right side	203 µm
Door - front left side	185 µm		

## Order/Scope of Order

An order was placed to prepare a sales report for the described vehicle. This report includes the following:

- Description of key vehicle information
- Documentation of equipment features  
(*Delivery by third-party service providers*)
- Documentation of damage, defects, missing parts
- Documentation of prior damage, unrepaired prior damage, repainting
- A brief visual or functional inspection of the equipment details, if possible.  
(*Functional testing of driver assistance systems is not included in the scope of services!*)
- a photographic documentation of the vehicle

## Basis for the order

This product is based on the guidelines for vehicle returns and valuations published by Alphabet Fleet GmbH. The expert makes the specific findings in each individual case objectively, within the framework of the prescribed standards, based on their own expertise.

The vehicle inspection takes place in a fully assembled, unassembled state.

Damage or defects that can only be detected during disassembly/diagnostic work or through further investigation remain within the realm of prognostic risk. An increased risk exists due to concealed defects caused by fraudulent misrepresentation and which were not identifiable by the expert.

Damage or defects resulting from normal use or wear and tear of the vehicle will be accepted in accordance with the applicable standard.

There was no explicit identification or monetary consideration of the expected features within the product.

Features which, in their nature and extent, slightly exceed normal use but do not constitute unacceptable damage, will be documented and indicated as signs of wear, if applicable.

Damage or defects that, according to the applicable standard, can no longer be attributed to normal use or wear and tear are listed under "Value Reducing Factors" in the product description.

Depending on the product specification, a monetary ID can be provided. If this takes place, the costs can be 100% d or pro rata depending on the vehicle's age and mileage.

## Previous damages

According to available information previous damages were repaired at the vehicle. Traces of repairs, which allow conclusions about the area of repair, were not recognizable during the inspection.



## Comments

Wartungshistorie gemäß Auftraggeber Informationen.



Figure 1: Diagonal front (left)



Figure 2: Diagonal front (right)



Figure 3: Diagonal rear (left)



Figure 4: Diagonal rear (right)



Figure 5: Interior - front



Figure 6: Interior - rear



Figure 7: Instrument cluster



Figure 8: Instrument panel



Figure 9: Interior 360° view



Figure 10: Cargo area



Figure 11: VIN



Figure 12: Mounted tyres



Figure 13: Documents



Figure 14: Additional tyres

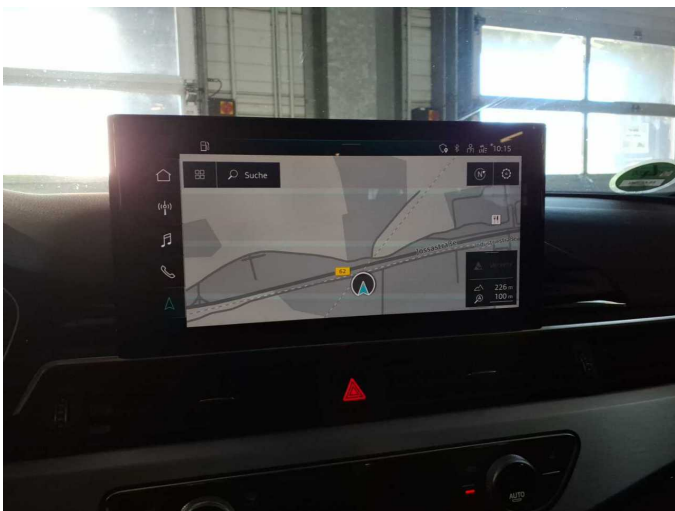


Figure 15: Navigation



Figure 16: Misc.



Figure 17: Misc.



Figure 18: Misc.



Figure 19: Misc.



Figure 20: Misc.



Figure 21: Misc.



Figure 22: Misc.



Figure 23: Misc.



Figure 24: Misc.



Figure 25: Misc.



Figure 26: Misc.



Figure 27: Misc.



Figure 28: Misc.



Damage 1: Body: Body - Glued / labelled - De-glug / neutralise



Damage 3: Sill - right side: Trim - Scratched - Paint



**Damage 3:** Sill - right side: Trim - Scratched - Paint



**Damage 3:** Sill - right side: Trim - Scratched - Paint



**Damage 3:** Sill - right side: Trim - Scratched - Paint



**Damage 4:** Wheel / tyres: Alloy rim - rear left side (Materialabtrag) - Scratched - Loss in value



**Damage 4:** Wheel / tyres: Alloy rim - rear left side (Materialabtrag) - Scratched - Loss in value



**Damage 4:** Wheel / tyres: Alloy rim - rear left side (Materialabtrag) - Scratched - Loss in value



**Damage 5:** Wheel / tyres: Alloy rim - rear right side (Materialabtrag) - Scratched - Loss in value



**Damage 5:** Wheel / tyres: Alloy rim - rear right side (Materialabtrag) - Scratched - Loss in value



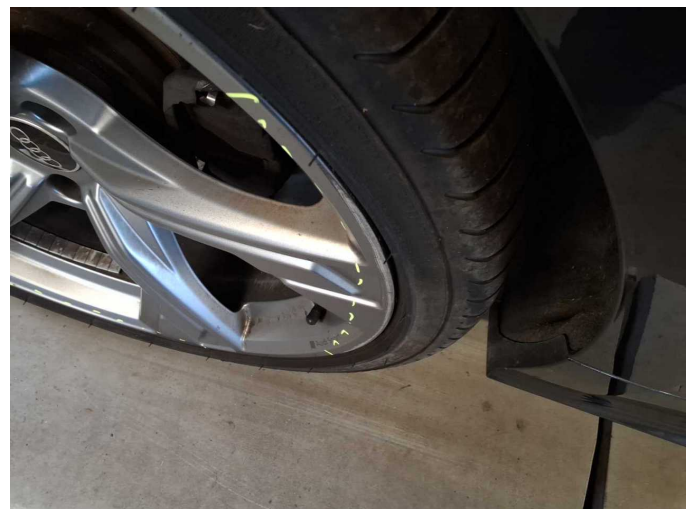
**Damage 5:** Wheel / tyres: Alloy rim - rear right side (Materialabtrag) - Scratched - Loss in value



**Damage 5:** Wheel / tyres: Alloy rim - rear right side (Materialabtrag) - Scratched - Loss in value



**Damage 5:** Wheel / tyres: Alloy rim - rear right side (Materialabtrag) - Scratched - Loss in value



**Damage 5:** Wheel / tyres: Alloy rim - rear right side (Materialabtrag) - Scratched - Loss in value



**Damage 6:** Wheel / tyres: Alloy rim - front left side (Materialabtrag) - Scratched - Loss in value



**Damage 6:** Wheel / tyres: Alloy rim - front left side (Materialabtrag) - Scratched - Loss in value



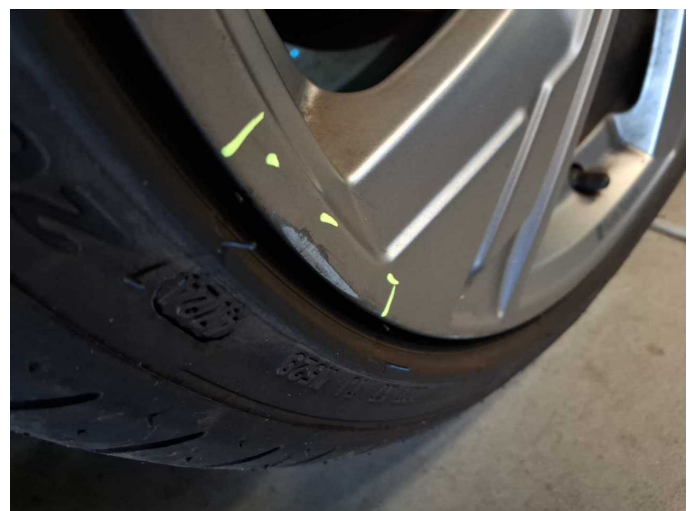
**Damage 6:** Wheel / tyres: Alloy rim - front left side (Materialabtrag) - Scratched - Loss in value



**Damage 6:** Wheel / tyres: Alloy rim - front left side (Materialabtrag) - Scratched - Loss in value



**Damage 6:** Wheel / tyres: Alloy rim - front left side (Materialabtrag) - Scratched - Loss in value



**Damage 6:** Wheel / tyres: Alloy rim - front left side (Materialabtrag) - Scratched - Loss in value



**Damage 7:** Wheel / tyres: Alloy rim - front right side (Materialabtrag) - Scratched - Loss in value



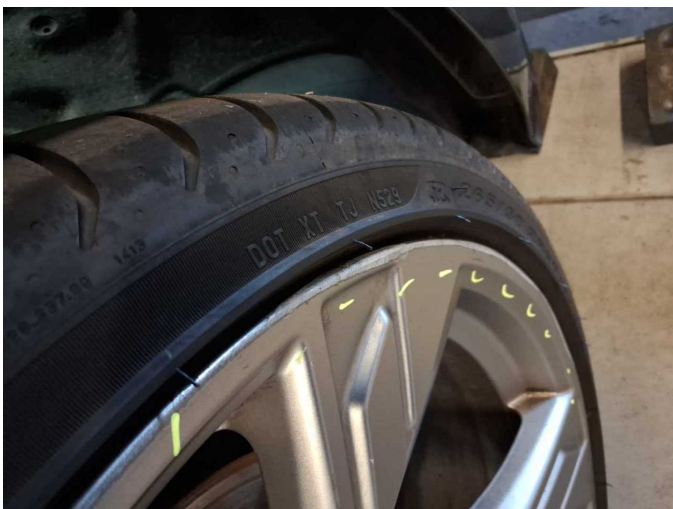
**Damage 7:** Wheel / tyres: Alloy rim - front right side (Materialabtrag) - Scratched - Loss in value



**Damage 7:** Wheel / tyres: Alloy rim - front right side (Materialabtrag) - Scratched - Loss in value



**Damage 7:** Wheel / tyres: Alloy rim - front right side (Materialabtrag) - Scratched - Loss in value



**Damage 7:** Wheel / tyres: Alloy rim - front right side (Materialabtrag) - Scratched - Loss in value



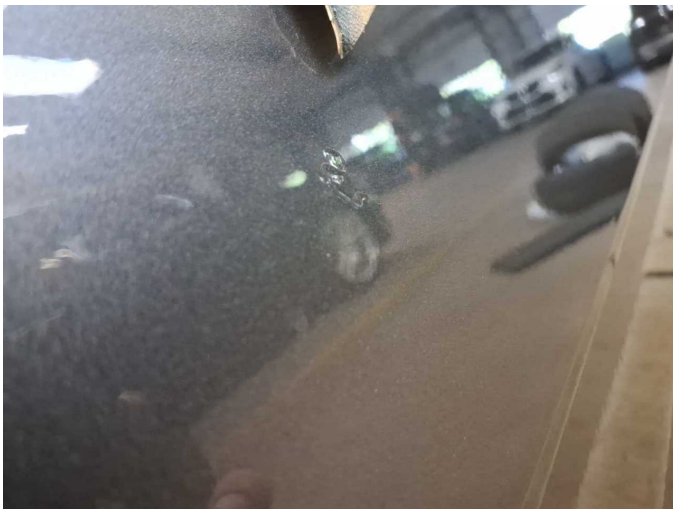
**Damage 7:** Wheel / tyres: Alloy rim - front right side (Materialabtrag) - Scratched - Loss in value



**Damage 7:** Wheel / tyres: Alloy rim - front right side (Materialabtrag) - Scratched - Loss in value



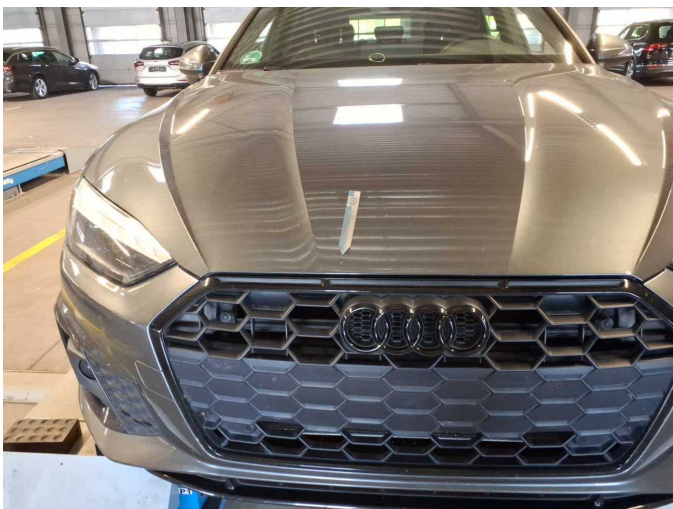
**Damage 8:** Door - front left side: Door (Einschlüsse) - Unprofessionally repaired - Repair and paint



**Damage 8:** Door - front left side: Door (Einschlüsse) - Unprofessionally repaired - Repair and paint



**Damage 8:** Door - front left side: Door (Einschlüsse) - Unprofessionally repaired - Repair and paint



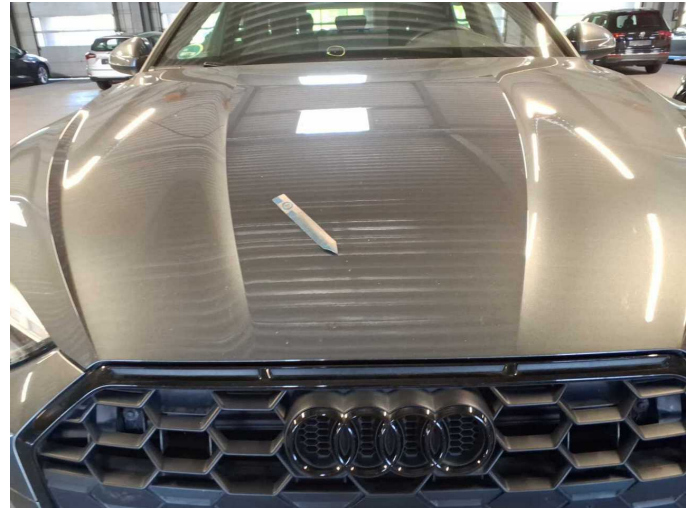
**Damage 9:** Bonnet: Bonnet - Dent / paintcoat damage - Repair and paint



**Damage 9:** Bonnet: Bonnet - Dent / paintcoat damage - Repair and paint



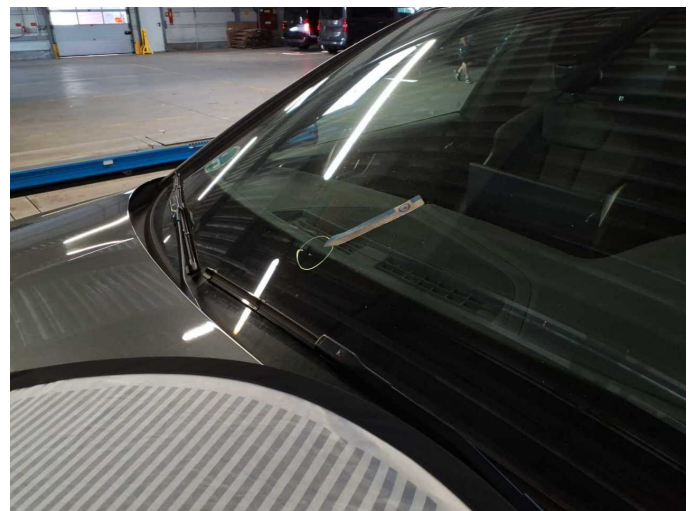
**Damage 9:** Bonnet: Bonnet - Dent / paintcoat damage - Repair and paint



**Damage 9:** Bonnet: Bonnet - Dent / paintcoat damage - Repair and paint



**Damage 9:** Bonnet: Bonnet - Dent / paintcoat damage - Repair and paint



**Damage 11:** Vehicle glazing: Windscreen (Rissbildung) - Stone chips - repair according to calculation



**Damage 11:** Vehicle glazing: Windscreen (Rissbildung) - Stone chips - repair according to calculation



**Damage 11:** Vehicle glazing: Windscreen (Rissbildung) - Stone chips - repair according to calculation



**Wear and tear 2:** Seat - front: Seat cover - left side (Wange) - Abrasion - No deduction



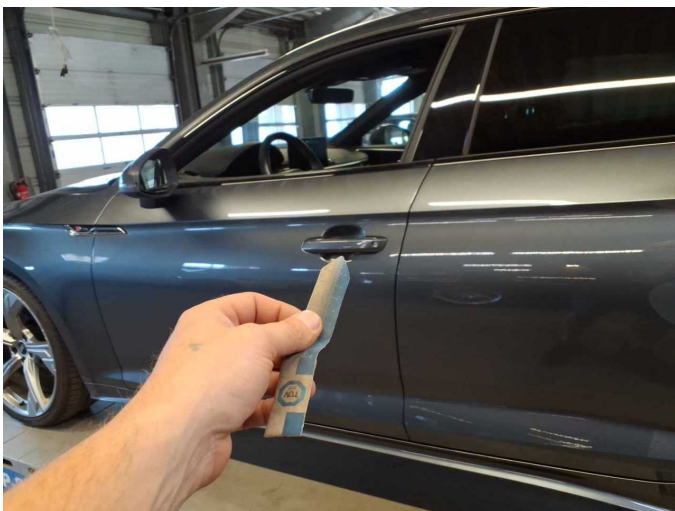
**Wear and tear 2:** Seat - front: Seat cover - left side (Wange) - Abrasion - No deduction



**Wear and tear 3:** 2nd wheel set: 2 alloy rims - Scratched - No deduction



**Wear and tear 3:** 2nd wheel set: 2 alloy rims - Scratched - No deduction



**Wear and tear 5:** Door - front left side: Door handle - outside - Scratch(es) - Smart repair



**Wear and tear 5:** Door - front left side: Door handle - outside - Scratch(es) - Smart repair



**Wear and tear 6:** Trim / covers: Brightware / decorative strip -  
Scratch(es) - No deduction



**Wear and tear 6:** Trim / covers: Brightware / decorative strip -  
Scratch(es) - No deduction



**Repainting 1:** Side panel - rear left side



**Repainting 2:** Side panel - rear right side



**Repainting 3:** Door - front left side



# Wartungshistorie

(gemäß Auftraggeber Informationen)

Fahrgestellnummer: WAUZZZF54NA029228  
Hersteller / Modell: AUDI AUDI A5 Sportback 35 TDI S tronic S line

Datum	KM-Stand	Beschreibung
09.03.2026	158.680	Bremsflüssigkeit; Bremsflüssigkeit ern
04.12.2025	153.300	Motoröl b. Wartung; Ölfilter ern; Regelwartungsdienst; Wartung Sonstiges
01.04.2025	137.950	AU; Motoröl b. Wartung; Ölfilter ern; Ölwechsel; Wartung Sonstiges
26.06.2024	124.604	Getriebeöl ern/prüfen; Kraftstofffilter ern; Regelwartungsdienst; Reparatur Sonstiges
18.04.2024	107.536	Bremsbelagfühler ern; Bremse Sonstiges; Bremsflüssigkeit; Bremsflüssigkeit ern; Bremsklötze hinten; Bremsklötze vorne; Bremsscheiben hinten; Bremsscheiben vorne; Motoröl b. Wartung; Ölfilter ern; Ölwechsel; Wartung Sonstiges
14.12.2023	89.451	Luftfiltereinsatz ern; Motoröl b. Wartung; Ölfilter ern; Regelwartungsdienst; Wartung Sonstiges
29.08.2023	70.699	Motoröl b. Wartung; Ölfilter ern; Ölwechsel; Wartung Sonstiges
16.03.2023	56.024	Bremsscheiben + Klötze h; Bremsscheiben + Klötze v; Getriebeöl ern/prüfen; Kraftstofffilter ern; Motoröl b. Wartung; Regelwartungsdienst
23.11.2022	40.254	Motoröl b. Wartung; Ölwechsel
06.09.2022	28.222	Regelwartungsdienst
12.07.2022	19.335	Motoröl b. Wartung; Ölwechsel