

## Expertise

Protocol number: 46135581  
Order No. / Reference: 26527733  
Inspection date: 23 Jun 2026

Manufacturer: Fiat

Model: 500e Icon

VIN: ZFAEFAC41MX009447



### Vehicle details

#### Manufacturer / Type / Model / Equipment

Fiat 500e Icon

**Vehicle Identification number** ZFAEFAC41MX009447

**Mileage (Read)** 21,401 km

**First registration** 5 Nov 2021

**Number of holders** 1

**Power / Engine displacement** 43 kw /

**Fuel type / Cylinder** Electric / 0

**Gearbox / Number of gears** Direct drive / 1

**Type of drive** Front drive

**Type of vehicle** Saloon car

**Colour / colour code** BIANCO

**Doors / Seats** 3 / 4

**Upholstery type** Cloth

**Colour of upholstery** Grey-Light grey



## Vehicle details

<b>Maintenance booklet / proof</b>	Available / incomplete	<b>Next maintenance in</b>	0 Tag(e)
<b>Last service on / at</b>	11/2022 at 6,478 km		
<b>Key is / should be</b>	2 / 2	<b>FZG documents</b>	ZB#2 (B) was available (copy), ZB#1 (S) was not available.
		<b>Letter No.</b>	FX166633
<b>Previous damage / Accident</b>	None detectable	<b>Repainting</b>	None detectable
<b>Inspection conditions</b>	sufficient	<b>Lifting equipment / pit</b>	No
<b>Test drive</b>	Not performed	<b>Engine function test</b>	Performed
<b>Manufacturer key number/ type code number</b>	1727 / AVN 00005		
<b>Emission standard</b>	2017/1151;WLTP;reine Elektrofz	<b>fine dust sticker</b>	
<b>Permitted total weight</b>	1,765 kg	<b>Empty weight</b>	

## Tyres

### Mounted tyres

#	Tyre size	Type of tyre	Manufacturer	Tread depth
1)	205/45 R17 88V	All-season tyres on Light alloy	Falken	5mm / 5mm
2)	205/45 R17 88V	All-season tyres on Light alloy	Falken	6mm / 6mm

### Replacement

Typ	Tyre size	Type of tyre	Manufacturer	Tread depth
Tirefit		Expiration date 08/2025		

**Legend: Tread depth information for the left tire is listed first, for the right tire it is listed second on the axle in the direction of travel.**



## Equipment

### Standard equipment

- ABS with EBD
- Acoustic Vehicle Alerting System (AVAS)
- Airbag head airbags front and rear
- Driver's side airbag
- third brake light
- Electronic Stability Control (ESC) with ASR and Brake Assist (BAS)
- electric front windows
- Follow me home light function
- Cruise control
- Transmission: 1-speed direct drive
- rear window wiper
- Keyless Entry & Keyless Go
- Automatic air conditioning
- Rear headrests (2)
- Paint finish: Solid
- Charging cable: Mode 2 EV/PHEV
- Charging cable: Mode 3 EV/PHEV
- LED side indicators
- Height-adjustable steering wheel
- light sensor
- Autonomous emergency braking assistant with pedestrian and cyclist detection
- Electronic parking brake
- Upholstery: Fabric
- Radio: Uconnect 5 with navigation system and 10.25" infotainment system
- Radio accessories: Digital audio reception DAB+
- Radio accessories: Smartphone mirroring via Apple CarPlay / Android Auto
- Radio accessories: USB port
- Rain sensor
- Wheels: 16" alloy wheels (with 195/55 R16 tires)
- Key in stone look
- Power steering
- Seats: Front seats, 4-way manually adjustable
- 12-volt socket at the front
- Traffic sign information
- thermal insulation glazing
- ABS with EBD (with electronic brake force distribution)
- Airbag - Passenger side (can be deactivated)
- Front side airbags
- Attention assistant
- Electronic Stability Control (ESC) with traction control (ASR) and brake assist (BAS)
- Driving mode switch
- Electric front windows with comfort function
- FollowMeHome function (delayed switching off of the headlights after leaving the vehicle)
- Back window, heater
- Instrument display as a 7" TFT color display
- Keyless Go
- Rear headrests (2)
- Front headrests
- Charging cable accessories: Bag for EV/PHEV Mode 3 charging cables
- LED taillights
- LED daytime running lights
- Steering wheel: Soft-touch steering wheel
- rear fog light
- Emergency call & SOS button
- One Pedal Driving Mode
- Rear parking sensors
- Radio: Audio system with 4 speakers
- Radio: Uconnect infotainment system 5 with navigation system (with 10.25" touchscreen - Bluetooth)
- Radio accessories: Digital radio reception DAB+
- Radio accessories: Uconnect LINK (Smartphone mirroring via Apple CarPlay and Android Auto)
- Radio accessories: USB port for smartphone mirroring
- Wheels: 16" alloy wheels
- Wheels: Passive tire pressure monitoring
- Fast charging function: EV/PHEV - 85 kW
- Seats: Driver's seat with memory function
- Lane departure warning system
- Uconnect Services
- Immobiliser
- Central locking



### Extra equipment

- Electrically adjustable and heated exterior mirrors
- Package: Fiat Co-Driver (Fiat Co-Driver Assistant (partially automated driving including traffic jam assistant) - 360° "Drone View" parking sensors - blind spot assistant - HD reversing camera with dynamic grid lines - audio system with 6 speakers)
- Package: Winter
- Package: Winter (Heated front seats - heated windshield wiper contact surface)
- Paintwork: Special solid color paintwork
- Package: Comfort (height-adjustable driver's seat - front center armrest - storage space in the center console - split-folding rear seat backrest)
- Package: Magic Eye
- Package: Magic Eye (Full LED headlights "Infinity" - High beam assist - Automatically dimming interior mirror)
- Phone: Wireless smartphone charging pad

### Brief expert findings

Documents submitted	At the time of the inspection, the vehicle registration certificate Part 2 (title) was available, but the vehicle registration certificate Part 1 (document) was not. (Copy)
VIN comparison	The vehicle identification number (VIN) was read from the vehicle and its conformity with the submitted documents was confirmed by the undersigned during the inspection.
Inspection	The inspection conditions were sufficient for the assessment of the vehicle. No lifting equipment or pit was available for inspecting the vehicle. Therefore, inspection of the vehicle's underside was only possible to a limited extent.
Test drive	No test drive/shunting maneuver was carried out during the inspection of the vehicle.
Engine function test	An engine test run was performed.

### Value reducing factors

No.	Component group	Description
1	Equipment	Vehicle key (Batterie) - Empty - Replace
2	Equipment	Tirefit filler - Expired - Replace
3	Side panel - rear left side	Side panel - dent(s) - Smooth repair work
4	Screen cleaning	Wiper arm - rear - Missing - Replace
5	Rear bumper	Rear bumper - Scratch(es) - Smart repair
6	Wheel / tyres	Tyre - front right side - Damaged - Replace
7	Wheel / tyres	Alloy rim - front right side - Scratch(es) - Loss in value
8	Misc.	Inspection / maintenance - Due - Perform
9	Door - front right side	Door - Scratch(es) - Paint

### Wear and tear

No.	Component group	Description
1	Bonnet	Bonnet - Stone chips - No deduction
2	Vehicle glazing	Windscreen - Stone chips - No deduction

The vehicle shows signs of wear and tear commensurate with its age and use.



## Order/Scope of Order

An order was placed to prepare a sales report for the described vehicle. This report includes the following:

- Description of key vehicle information
- Documentation of equipment features  
*(Delivery by third-party service providers)*
- Documentation of damage, defects, missing parts
- Documentation of prior damage, unrepaired prior damage, repainting
- A brief visual or functional inspection of the equipment details, if possible.  
*(Functional testing of driver assistance systems is not included in the scope of services!)*
- a photographic documentation of the vehicle

## Basis for the order

This product is based on the guidelines for vehicle returns and valuations published by Alphabet Fleet GmbH. The expert makes the specific findings in each individual case objectively, within the framework of the prescribed standards, based on their own expertise.

The vehicle inspection takes place in a fully assembled, unassembled state.

Damage or defects that can only be detected during disassembly/diagnostic work or through further investigation remain within the realm of prognostic risk. An increased risk exists due to concealed defects caused by fraudulent misrepresentation and which were not identifiable by the expert.

Damage or defects resulting from normal use or wear and tear of the vehicle will be accepted in accordance with the applicable standard.

There was no explicit identification or monetary consideration of the expected features within the product.

Features which, in their nature and extent, slightly exceed normal use but do not constitute unacceptable damage, will be documented and indicated as signs of wear, if applicable.

Damage or defects that, according to the applicable standard, can no longer be attributed to normal use or wear and tear are listed under "Value Reducing Factors" in the product description.

Depending on the product specification, a monetary ID can be provided. If this takes place, the costs can be 100% or pro rata depending on the vehicle's age and mileage.

## Previous damages

No apparent prior damage that had been repaired could be found on the vehicle.



Figure 1: Diagonal front (left)



Figure 2: Diagonal front (right)



Figure 3: Diagonal rear (left)



Figure 4: Diagonal rear (right)



Figure 5: Interior - front



Figure 6: Interior - rear



Figure 7: Instrument cluster



Figure 8: Instrument panel



Figure 9: Interior 360° view



Figure 10: Cargo area



Figure 11: VIN



Figure 12: Mounted tyres



Figure 13: Documents



Figure 14: Navigation



Figure 15: Misc.



Figure 16: Misc.

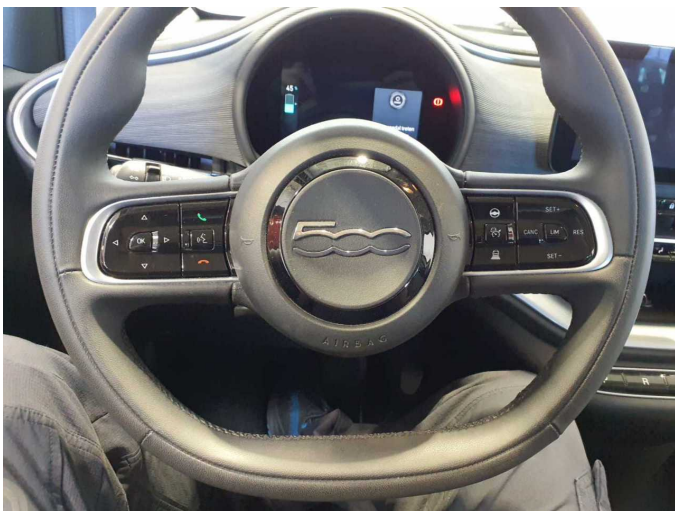


Figure 17: Misc.

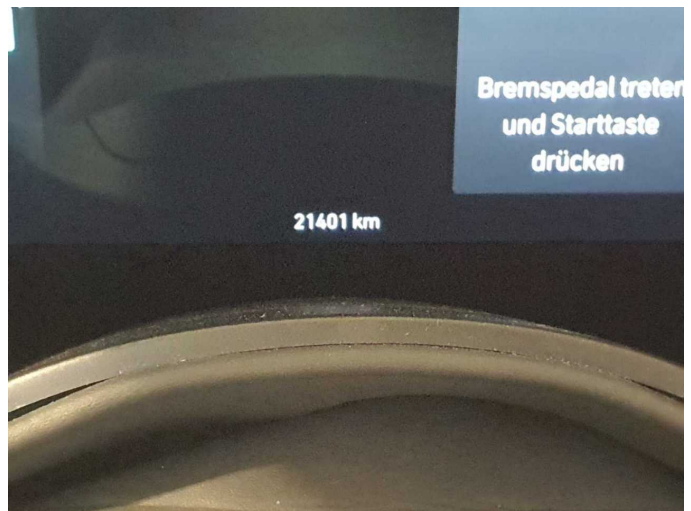


Figure 18: Misc.



Figure 19: Misc.



Figure 20: Misc.

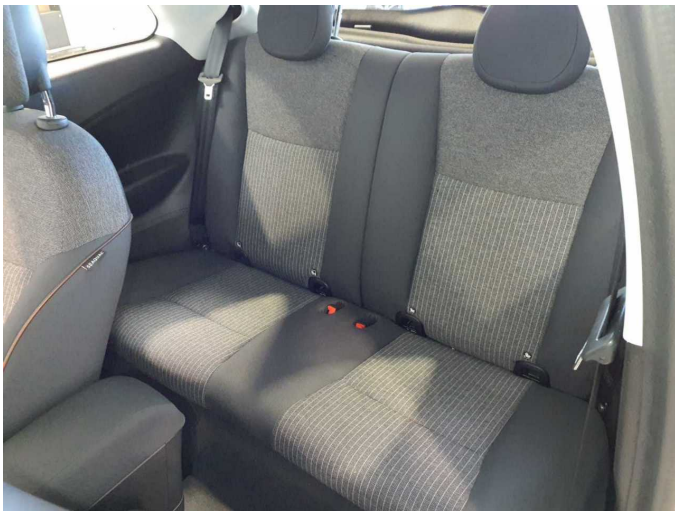


Figure 21: Misc.

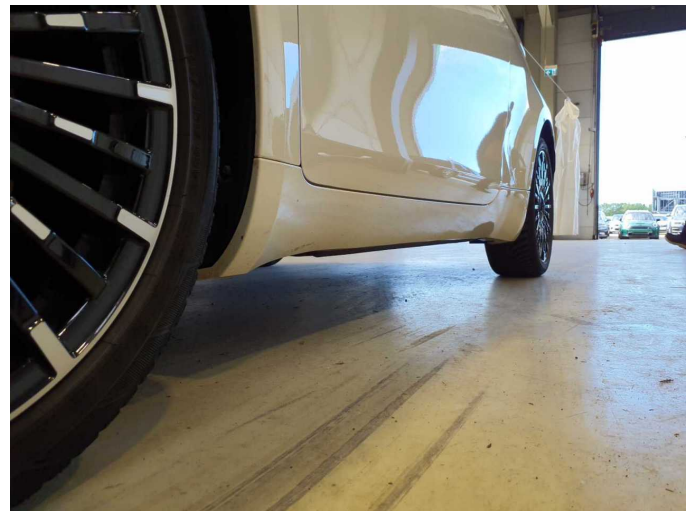


Figure 22: Misc.



Figure 23: Misc.

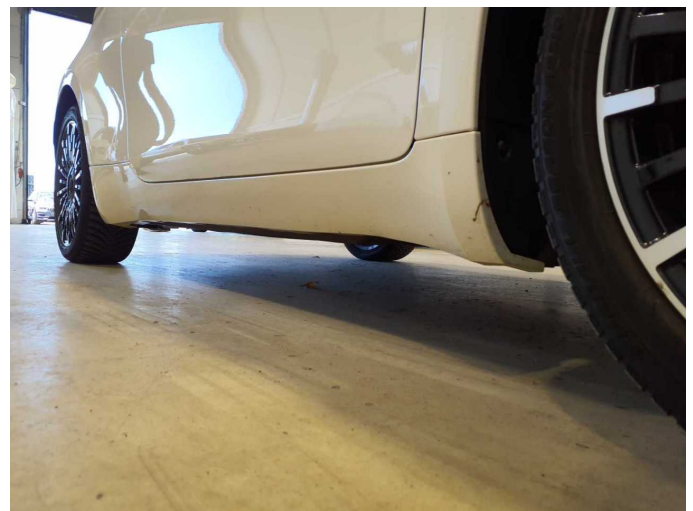


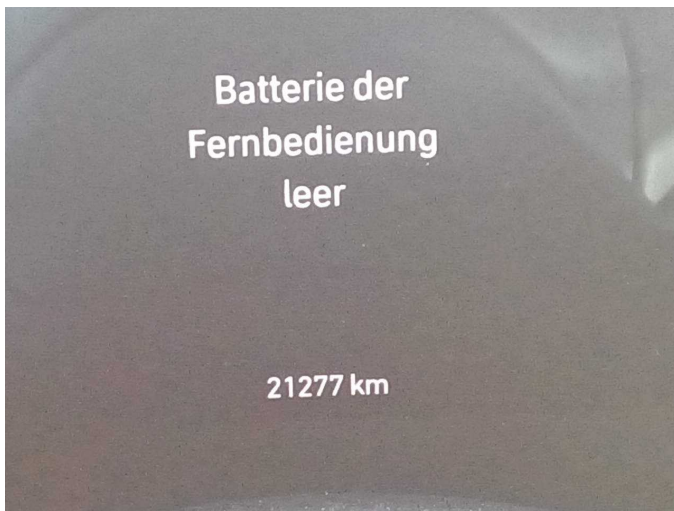
Figure 24: Misc.



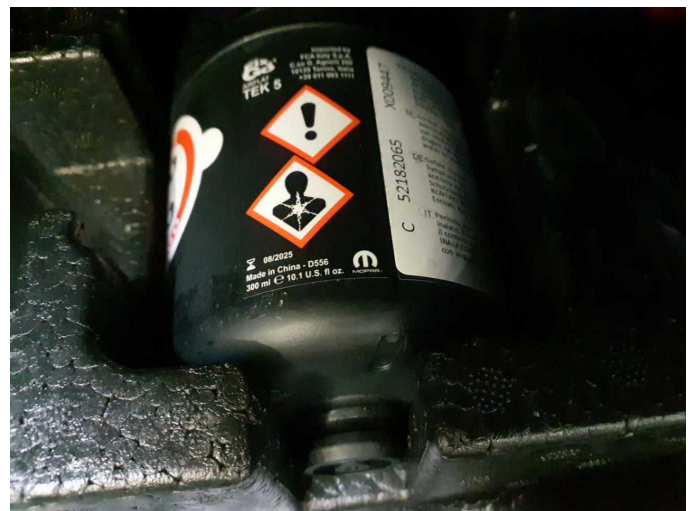
Figure 25: Misc.



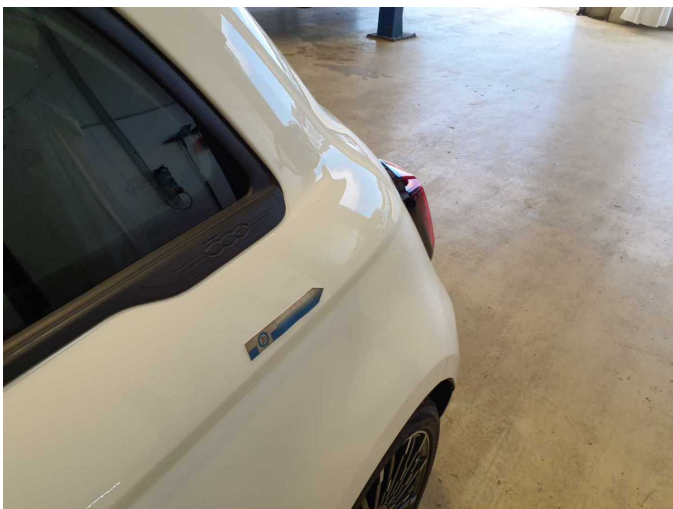
Figure 26: Misc.



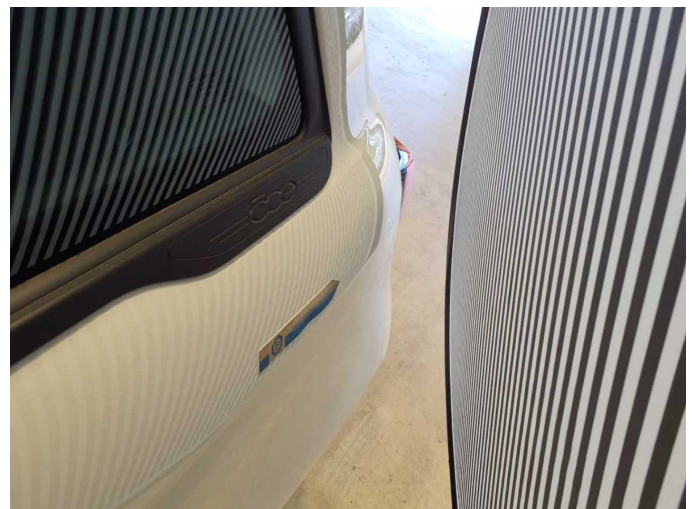
Damage 1: Equipment: Vehicle key (Batterie) - Empty - Replace



Damage 2: Equipment: Tire filler - Expired - Replace



Damage 3: Side panel - rear left side: Side panel - dent(s) - Smooth repair work



Damage 3: Side panel - rear left side: Side panel - dent(s) - Smooth repair work



**Damage 4:** Screen cleaning: Wiper arm - rear - Missing - Replace



**Damage 5:** Rear bumper: Rear bumper - Scratch(es) - Smart repair



**Damage 5:** Rear bumper: Rear bumper - Scratch(es) - Smart repair



**Damage 6:** Wheel / tyres: Tyre - front right side - Damaged - Replace



**Damage 6:** Wheel / tyres: Tyre - front right side - Damaged - Replace



**Damage 7:** Wheel / tyres: Alloy rim - front right side - Scratch(es) - Loss in value



**Damage 7:** Wheel / tyres: Alloy rim - front right side - Scratch(es) - Loss in value



**Damage 8:** Misc.: Inspection / maintenance - Due - Perform



**Damage 9:** Door - front right side: Door - Scratch(es) - Paint



**Damage 9:** Door - front right side: Door - Scratch(es) - Paint



**Damage 9:** Door - front right side: Door - Scratch(es) - Paint