

Expertise

Protocol number: 45507086
Order No. / Reference: 26277589
Inspection date: 18 May 2026

Manufacturer: Volkswagen

Model: Passat Variant 1.4 TSI Plug-In-Hybrid DSG GTE

VIN: WVVZZZ3CZME096232



Vehicle details

Manufacturer / Type / Model / Equipment

Volkswagen Passat Variant 1.4 TSI Plug-In-Hybrid DSG GTE

Vehicle Identification number WVVZZZ3CZME096232

Mileage (Read) 125,133 km

First registration 12 Apr 2021

Number of holders 1

Power / Engine displacement 115 kw / 1,395 ccm

Fuel type / Cylinder Hybr.B/E ext.auf1 / 4

Gearbox / Number of gears Automatic / 6

Type of drive Front drive

Type of vehicle Station wagon

Colour / colour code Mangangrau-metallic

Doors / Seats 5 / 5

Upholstery type Cloth

Colour of upholstery Black-Anthracite



Vehicle details

Maintenance booklet / proof	digital proof / complete	Next maintenance in	13,700 km
Last service on / at	03/2026 at 123,769 km		
Key is / should be	2 / 2	FZG documents	ZB#2 (B) was available (copy), ZB#1 (S) was not available.
		Letter No.	GA769996
Previous damage / Accident	Detectable	Repainting	None detectable
Inspection conditions	sufficient	Lifting equipment / pit	No
Test drive	Not performed	Engine function test	Performed
Manufacturer key number/ type code number	0603 / BRZ 00077		
Emission standard	EURO6;WLTP;AP;PI/CI; M, N1 I	fine dust sticker	
Permitted total weight	2,270 kg	Empty weight	

Tyres

Mounted tyres

#	Tyre size	Type of tyre	Manufacturer	Tread depth
1)	215/55 R17 94H	Winter tires (with run-flat tires) on Light alloy	Continental	5mm / 5mm
2)	215/55 R17 94H	Winter tires (with run-flat tires) on Light alloy	Pirelli	5mm / 5mm

Additional tyres

#	Tyre size	Type of tyre	Manufacturer	Tread depth
1)	215/55 R17 94V	Summer tires (with run-flat tires) on Light alloy	Pirelli	6mm / 6mm
2)	215/55 R17 94V	Summer tires (with run-flat tires) on Light alloy	Pirelli	6mm / 6mm

Legend: Tread depth information for the left tire is listed first, for the right tire it is listed second on the axle in the direction of travel.

TÜV SÜD Auto Partner GmbH
Wiesenring 2
04159 Leipzig

Inspection location
Hartmann Fleet Professionals GmbH
Leerenstraße 25
29683 Bad Fallingbommel



Equipment



Standard equipment

- Airbag for driver and front passenger (airbag deactivation switch on the passenger side)
- Anti-lock braking system (ABS)
- Adaptive Cruise Control (ACC) "stop & go", including speed limiter
- Cup holders (2) front
- third brake light
- black roof rails
- Electronic parking brake including auto-hold function
- Electronic stability program and electromechanical brake booster
- Pedestrian detection
- Adjustable luggage compartment floor
- Interior lights front and rear with delayed shut-off and dimming function (2 reading lights at the front)
- Air conditioning system "Air Care Climatronic" with 3-zone temperature control and allergen filter
- Rear headrests (3)
- Front headrests (safety-optimized)
- LED headlights with daytime running lights
- Headlight range control
- Makeup mirrors in the sun visors
- Fatigue detection (detects signs of possible driver fatigue based on characteristic steering behavior, time of day and driving duration and issues a visual and audible warning)
- Mesh partition
- Non-smoking version (storage compartment and 12V socket at the front)
- Emergency braking assistant "Front Assist" (for automatic distance control ACC up to 210 km/h)
- Package: Light and Sight Package "Plus" (LED lights in the front footwell - Electrically adjustable and heated exterior mirrors, automatically dimming on the driver's side - Entry/warning lights in the front doors, in LED technology - Automatic headlight control, with daytime running lights, "Leaving Home" function and manual "Coming Home" function - Interior light with delayed shut-off and dimming function, 2 LED reading lights each in the front and rear - Automatically dimming interior mirror - Illuminated vanity mirrors - Extendable sun visors - Rain sensor)
- Radio accessories: Digital radio reception DAB+ (reception of digitally broadcast radio stations and traffic information in addition to the analog station offering - reception depends on the local availability of digital networks - expanded range of radio programs - improved reception performance)
- Power steering (electromechanical, speed-dependent)
- Seat belts: Three-point automatic seat belt (seat belt for middle rear seat - seat belts for outer rear seats - front seat belts with height adjustment and belt tensioner)
- 12V power outlet on the rear of the center console
- Telephone interface
- First aid kit, warning triangle and high-visibility vest
- Electronic immobilizer
- Airbag, head airbag system for front and rear passengers (including front side airbags)
- App-Connect Wireless (Volkswagen offers three interfaces for connecting smartphones with numerous possibilities: - Apple CarPlay - Android Auto from Google - MirrorLink)
- Hill start assist
- Headliner in Mistral Grey
- Parking aid - warning signals for obstacles in the front and rear area
- Remote release for luggage compartment lid
- Windscreen made of laminated safety glass, heat and sound insulating
- Transmission: 6-speed DSG (6-speed dual-clutch transmission DSG)
- ISOFIX mounting points (for attaching 2 child seats to the rear seats, also for i-Size child seats)
- Instrument cluster with electronic speedometer, odometer and trip odometer, tachometer
- LED taillights
- Steering wheel: Multifunction sports steering wheel in leather, with paddle shifters (gearshift knob in leather)
- Multifunction display "Premium" with multi-color display (showing, among other things: - Outside temperature - Average consumption - Average speed - Trip distance - Trip time - Gear recommendation - Speed warning - Comfort - Current consumption - Range - Service - Time with extended display options, e.g.: - Digital speedometer - Digital oil temperature display - Lights & visibility - Language - Auxiliary heater - Winter tires)
- Emergency call service (no registration required, service is activated upon delivery)
- Upholstery: Fabric "Weave" (center panels of the front seats and outer rear seats in fabric "Weave")
- Proactive occupant protection system in conjunction with "Front Assist" (detects critical traffic situations with increased accident potential - prepares vehicle occupants and the vehicle for a possible accident by tightening the front, fastened seat belts and securing the driver and front passenger, and closing open windows and the sunroof except for a gap)
- Tire pressure monitoring system (passive)
- Wheels: 4 "Montpellier" alloy wheels 7 J x 17 (rolling resistance optimized - AirStop tires 215/55 R 17 - wheel locks with enhanced theft protection)
- LED taillights
- Rear bench seat undivided, backrest asymmetrically split and foldable, with center armrest (and pass-through option)
- Seats: Front seats are height-adjustable
- Start-stop system (with brake energy recuperation)
- Bumpers in body color
- Textile floor mats (front and rear)
- Warning tone and light for unfastened seat belts front and rear



- Black trim strips on the side windows

Extra equipment

- Airbag: Driver's side knee airbag, rear side airbags and seatbelt pretensioners (airbag for driver and front passenger, with front passenger airbag deactivation, including driver's side knee airbag - three-point automatic seatbelts with pretensioners for the outer rear seats - side airbags for the outer rear seats, including front side airbags and head airbag system)
- e-Sound (artificially generated engine noise to inform other road users about the approach of the e-vehicle)
- Cable for AC charging station (incl. standard mains charging cable for household socket)
- Paint finish: Metallic
- Navigation system "Discover Pro" incl. "Streaming & Internet" (4x20 Watt App-Con. Wireless Digital Cockpit. Operation with proximity sensor. Dual tuner with phase differentiation. DAB. Vehicle menu. Speed. Volume adjustment. Gestures. 32 GB SSD hard drive. Map 2D display. Tone control. 3-way TFT display with touchscreen. MP3. Navigation for Europe. Voice control. Telephone contact. Address. Telephone interface. "Comfort" with inductive charging. 2 USB iPod/iPhone. Traffic sign recognition. "We Connect Plus" incl. "We Connect". Dynamic route guidance. RDS. TMC tuner. Mobile key pre-activation, vehicle via smartphone.)
- Package: Driver Assistance Package "Plus" incl. IQ.LIGHT - LED matrix headlights in conjunction with Business Package (Dynamic Light Assist high beam control, Travel Assist, Lane Assist and Emergency Assist, LED matrix headlights, LED daytime running lights, cornering lights and dynamic turn signals, LED taillights with dynamic turn signals, dynamic headlight range control with dynamic cornering lights, rear fog lights on both sides, reversing lights on both sides, Park Assist including parking aid, Side Assist lane change assistant and Rear Traffic Alert)
- Rear side windows and rear window tinted
- Towbar, foldable (with electric release)
- Exterior mirrors with ambient lighting and passenger-side mirror lowering function (foldable and heated - dimming on the driver's side)
- On-board tools and jack
- Anti-theft alarm system (interior monitoring, backup horn and tow-away protection - illuminated make-up mirror in the sun visors, extendable sun visors)
- Tailgate with electric opening and closing, electric opening for luggage compartment cover (extendable and removable luggage compartment cover with electric opening - tailgate with electric opening and closing)
- Package: "Business Premium" package incl. navigation (from Business trim level) (2 USB-C ports in the front, 1 USB-C charging port in the rear, 230V socket, App-Connect incl. wireless, Apple CarPlay, Android Auto, "Travel Assist" driver assistance system and "Lane Assist" lane keeping system, Air Care Climatronic with 3-zone temperature control, allergen filter and rear controls, lumbar support in the front, electric on the driver's side, massage function on the driver's side, "Rear View" reversing camera, heated windshield washer nozzles, Comfort telephone interface, inductive charging function, heated front seats)
- Package: Ambient lighting (ambient lighting, 1-color - entry/warning lights in LED technology in all doors)
- Wheels: Tire Mobility Set omitted
- Wheels: Winter wheels (additional), light alloy, "Helsinki" 6.5 J x 17 (AirStop winter tires 215/55 R 17 H)
- Keyless locking and starting system "Keyless Access" with safe locking (automatic locking and starting system where the vehicle key must be carried but not handled - if you carry the vehicle key and approach the vehicle, it is automatically unlocked; the engine is conveniently started via a start button)
- Voice control

Brief expert findings

Documents submitted	At the time of the inspection, the vehicle registration certificate Part 2 (title) was available, but the vehicle registration certificate Part 1 (document) was not. (Copy)
VIN comparison	The vehicle identification number (VIN) was read from the vehicle and its conformity with the submitted documents was confirmed by the undersigned during the inspection.
Inspection	The inspection conditions were sufficient for the assessment of the vehicle. No lifting equipment or pit was available for inspecting the vehicle. Therefore, inspection of the vehicle's underside was only possible to a limited extent.
Test drive	No test drive/shunting maneuver was carried out during the inspection of the vehicle.
Engine function test	An engine test run was performed.



Value reducing factors

No.	Component group	Description
1	Trim / covers	Trim / covers - Scratch(es) - Loss in value
2	Side panel - rear left side	Sill - Scratch(es) - Smart repair
3	Side panel - rear left side	Side panel - Scratch(es) - Smart repair
4	Interior	Interior (Tier haare) - Soiled - Conditioning
5	2nd wheel set	1 alloy rim - Scratch(es) - Loss in value
6	Door - rear right side	Door - Dent / paintcoat damage - Paint
7	Door - rear left side	Door - Scratch(es) - Paint
8	Rear bumper	Rear bumper - Dent / paintcoat damage - Repair and paint
9	Bonnet	Bonnet - Dent / paintcoat damage - Repair and paint
10	Roof	Roof - Corrosion - Repair and paint

Wear and tear

No.	Component group	Description
1	2nd wheel set	1 alloy rim - Scratch(es) - No deduction
2	Roof	Roof - dent(s) - No deduction
3	Vehicle glazing	Rear window - Scratch(es) - No deduction
4	Front bumper	Front bumper - Scratch(es) - No deduction
5	Wheel / tyres	Alloy rim - front right side - Scratch(es) - No deduction
6	Roof	Roof rail - left side - dent(s) - No deduction
7	Indicator - front	Mirror - right side - Scratch(es) - No deduction

The vehicle shows signs of wear and tear commensurate with its age and use.

Missing parts

Description

Documents - Service book (Digitalerr Ausdruck)

Previous damages

No.	Previous damage	Extent of damage (Net)
1	Side right, Provided by user / customer, from 13 Apr 2025	1.832,90 €

Order/Scope of Order

An order was placed to prepare a sales report for the described vehicle. This report includes the following:

- Description of key vehicle information
- Documentation of equipment features
(*Delivery by third-party service providers*)
- Documentation of damage, defects, missing parts
- Documentation of prior damage, unrepaired prior damage, repainting
- A brief visual or functional inspection of the equipment details, if possible.
(*Functional testing of driver assistance systems is not included in the scope of services!*)
- a photographic documentation of the vehicle



Basis for the order

This product is based on the guidelines for vehicle returns and valuations published by Alphabet Fleet GmbH. The expert makes the specific findings in each individual case objectively, within the framework of the prescribed standards, based on their own expertise.

The vehicle inspection takes place in a fully assembled, unassembled state.

Damage or defects that can only be detected during disassembly/diagnostic work or through further investigation remain within the realm of prognostic risk. An increased risk exists due to concealed defects caused by fraudulent misrepresentation and which were not identifiable by the expert.

Damage or defects resulting from normal use or wear and tear of the vehicle will be accepted in accordance with the applicable standard.

There was no explicit identification or monetary consideration of the expected features within the product.

Features which, in their nature and extent, slightly exceed normal use but do not constitute unacceptable damage, will be documented and indicated as signs of wear, if applicable.

Damage or defects that, according to the applicable standard, can no longer be attributed to normal use or wear and tear are listed under "Value Reducing Factors" in the product description.

Depending on the product specification, a monetary ID can be provided. If this takes place, the costs can be 100% d or pro rata depending on the vehicle's age and mileage.

Previous damages

According to available information previous damages were repaired at the vehicle. Traces of repairs, which allow conclusions about the area of repair, were not recognizable during the inspection.



Figure 1: Diagonal front (left)



Figure 2: Diagonal front (right)



Figure 3: Diagonal rear (left)



Figure 4: Diagonal rear (right)



Figure 5: Interior - front



Figure 6: Interior - rear



Figure 7: Instrument cluster



Figure 8: Instrument panel



Figure 9: Interior 360° view



Figure 10: Cargo area

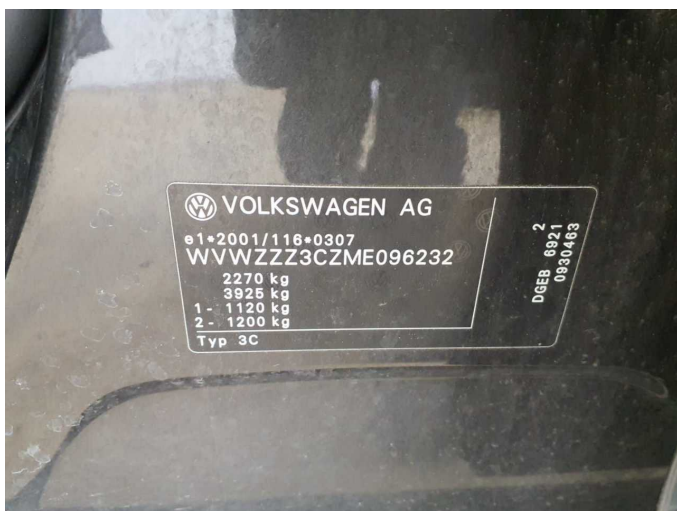


Figure 11: VIN



Figure 12: Mounted tyres



Figure 13: Documents



Figure 14: Additional tyres



Figure 15: Additional tyres

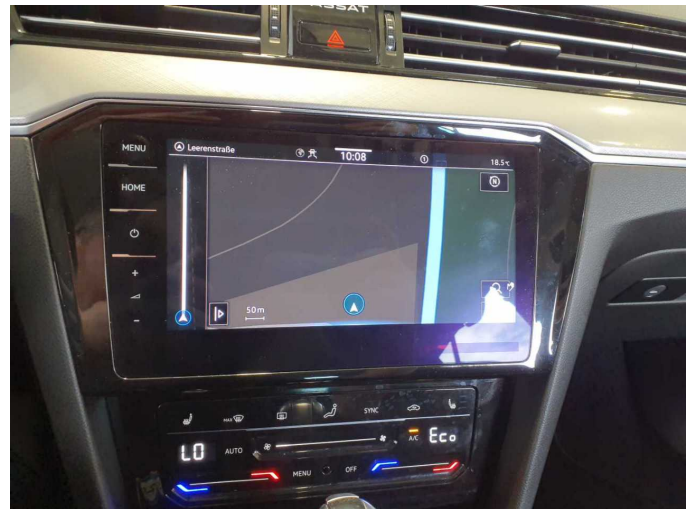


Figure 16: Navigation



Figure 17: Misc.



Figure 18: Misc.



Figure 19: Misc.



Figure 20: Misc.

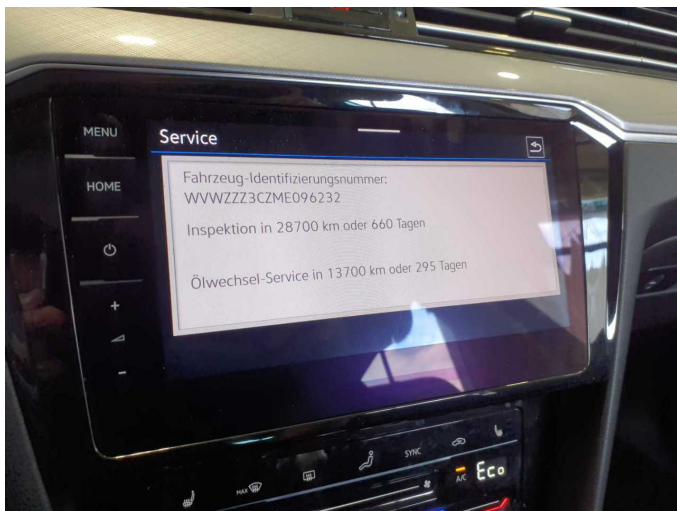


Figure 21: Misc.



Figure 22: Misc.



Figure 23: Misc.



Figure 24: Misc.



Figure 25: Misc.



Figure 26: Misc.

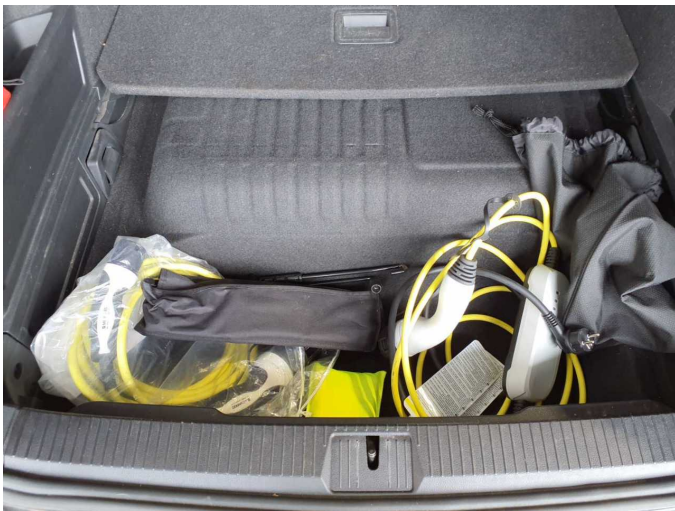


Figure 27: Misc.

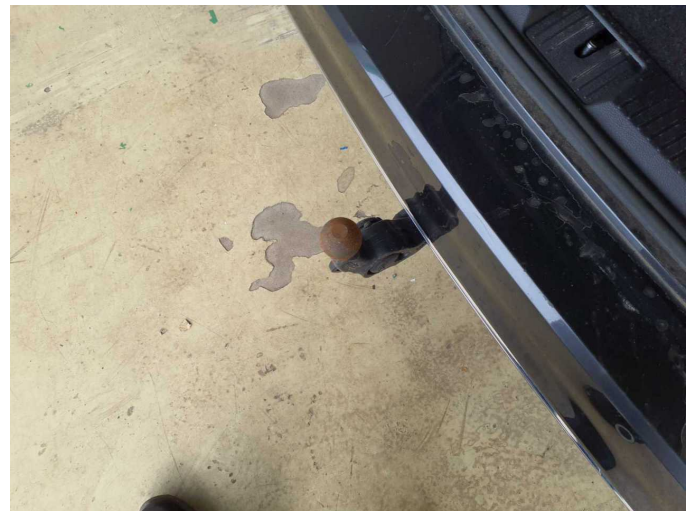
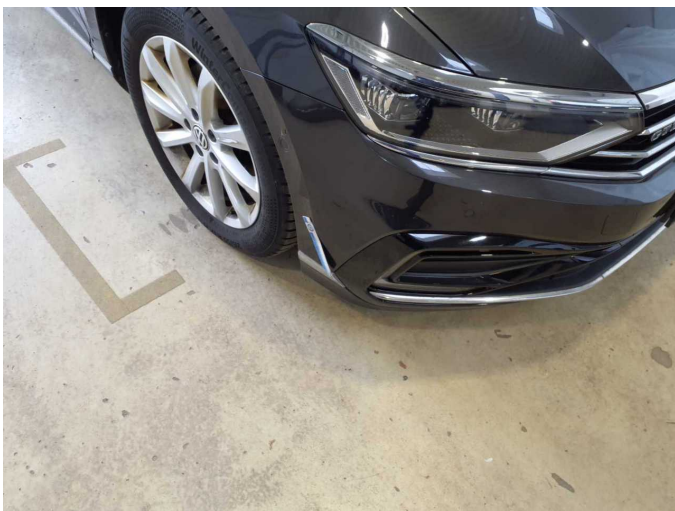


Figure 28: Misc.



Damage 1: Trim / covers: Trim / covers - Scratch(es) - Loss in value



Damage 1: Trim / covers: Trim / covers - Scratch(es) - Loss in value



Damage 2: Side panel - rear left side: Sill - Scratch(es) - Smart repair



Damage 2: Side panel - rear left side: Sill - Scratch(es) - Smart repair



Damage 3: Side panel - rear left side: Side panel - Scratch(es) - Smart repair



Damage 3: Side panel - rear left side: Side panel - Scratch(es) - Smart repair



Damage 4: Interior: Interior (Tier haare) - Soiled - Conditioning



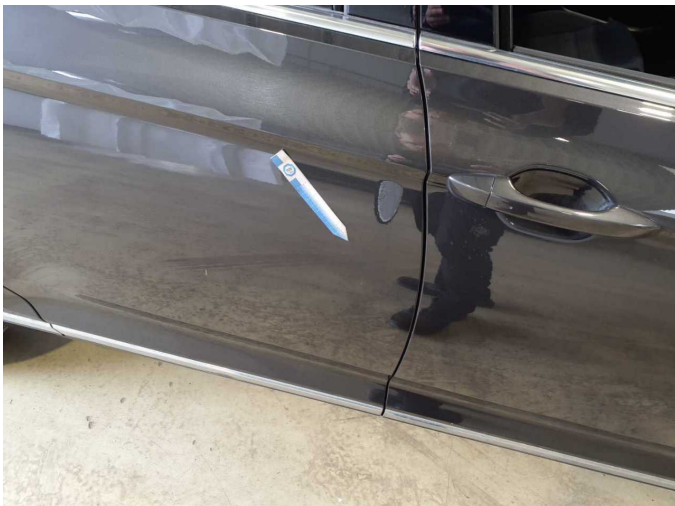
Damage 4: Interior: Interior (Tier haare) - Soiled - Conditioning



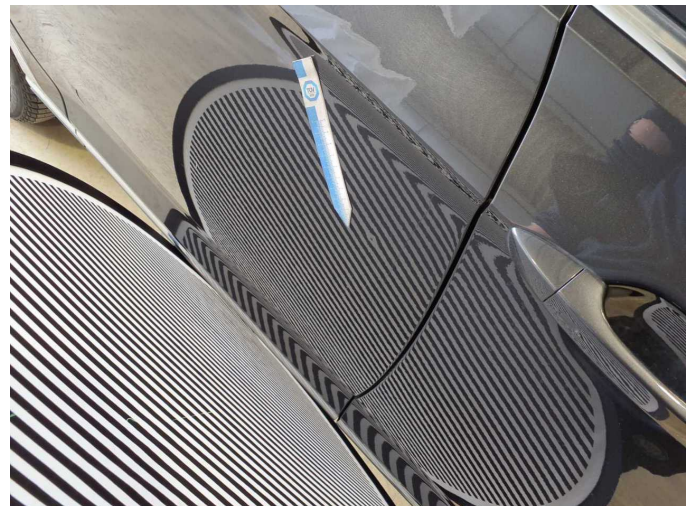
Damage 5: 2nd wheel set: 1 alloy rim - Scratch(es) - Loss in value



Damage 5: 2nd wheel set: 1 alloy rim - Scratch(es) - Loss in value



Damage 6: Door - rear right side: Door - Dent / paintcoat damage - Paint



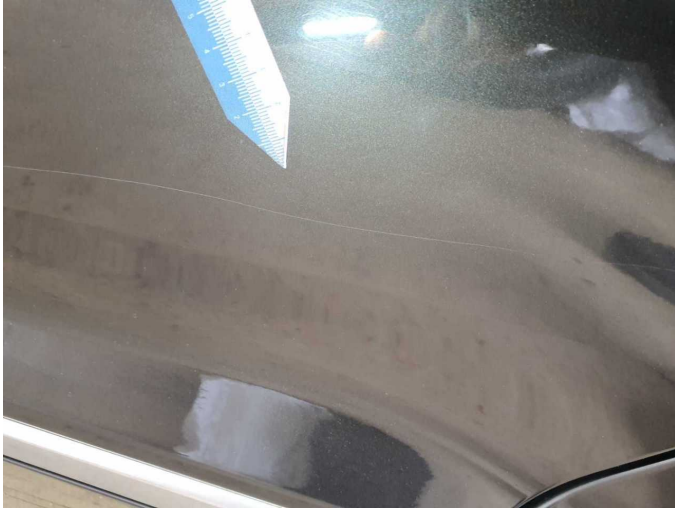
Damage 6: Door - rear right side: Door - Dent / paintcoat damage - Paint



Damage 6: Door - rear right side: Door - Dent / paintcoat damage - Paint



Damage 7: Door - rear left side: Door - Scratch(es) - Paint



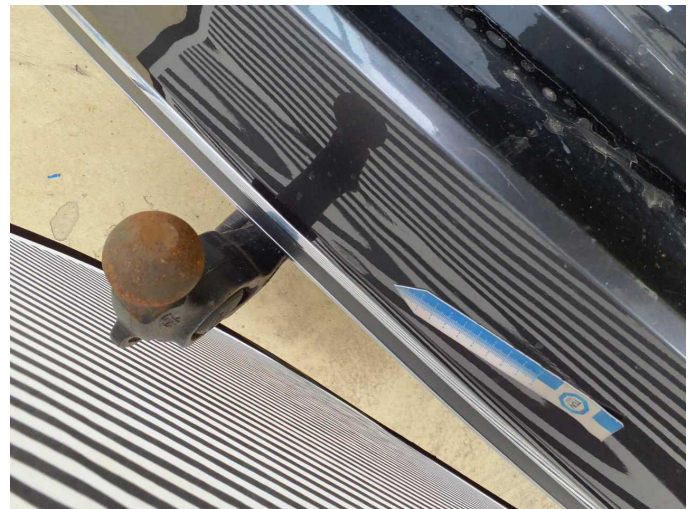
Damage 7: Door - rear left side: Door - Scratch(es) - Paint



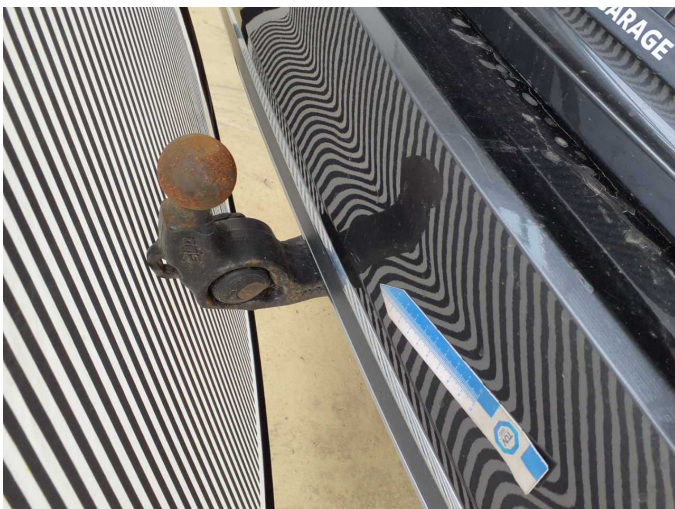
Damage 7: Door - rear left side: Door - Scratch(es) - Paint



Damage 8: Rear bumper: Rear bumper - Dent / paintcoat damage - Repair and paint



Damage 8: Rear bumper: Rear bumper - Dent / paintcoat damage - Repair and paint



Damage 8: Rear bumper: Rear bumper - Dent / paintcoat damage - Repair and paint



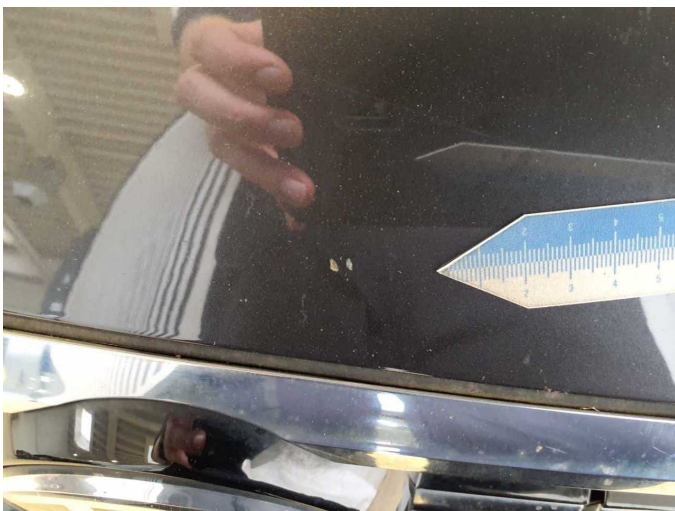
Damage 8: Rear bumper: Rear bumper - Dent / paintcoat damage - Repair and paint



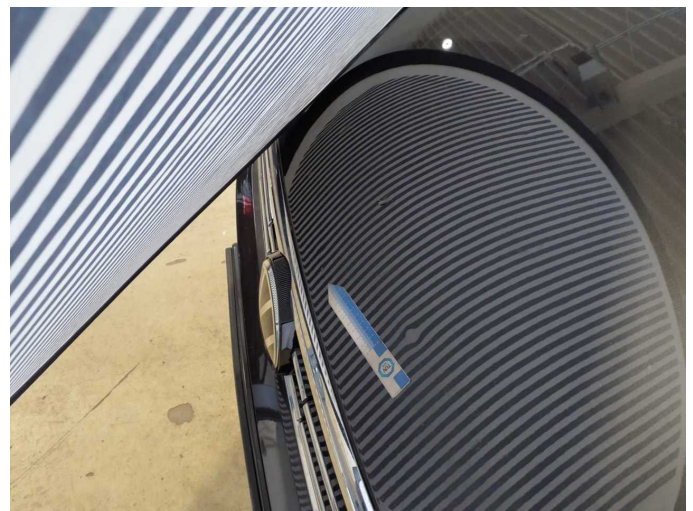
Damage 8: Rear bumper: Rear bumper - Dent / paintcoat damage - Repair and paint



Damage 9: Bonnet: Bonnet - Dent / paintcoat damage - Repair and paint



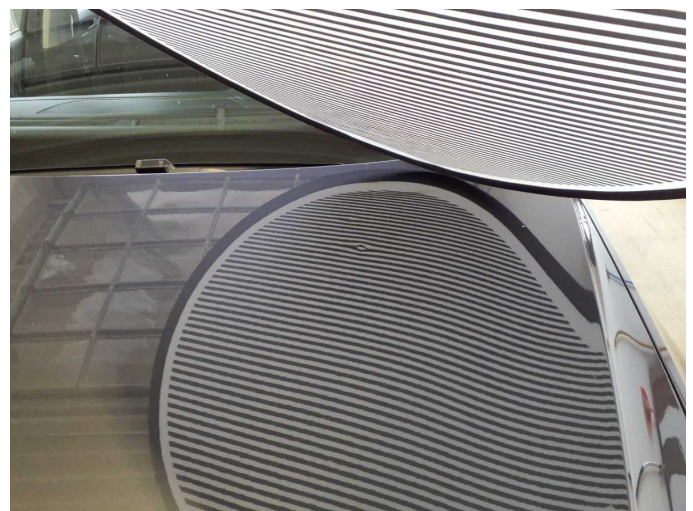
Damage 9: Bonnet: Bonnet - Dent / paintcoat damage - Repair and paint



Damage 9: Bonnet: Bonnet - Dent / paintcoat damage - Repair and paint



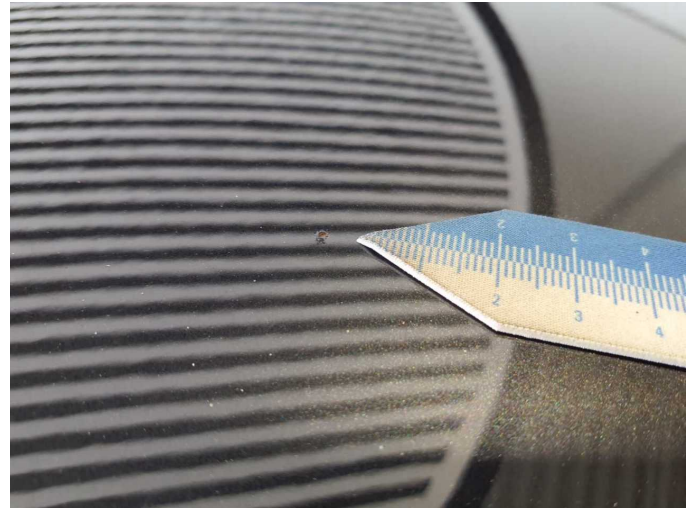
Damage 9: Bonnet: Bonnet - Dent / paintcoat damage - Repair and paint



Damage 9: Bonnet: Bonnet - Dent / paintcoat damage - Repair and paint



Damage 10: Roof: Roof - Corrosion - Repair and paint



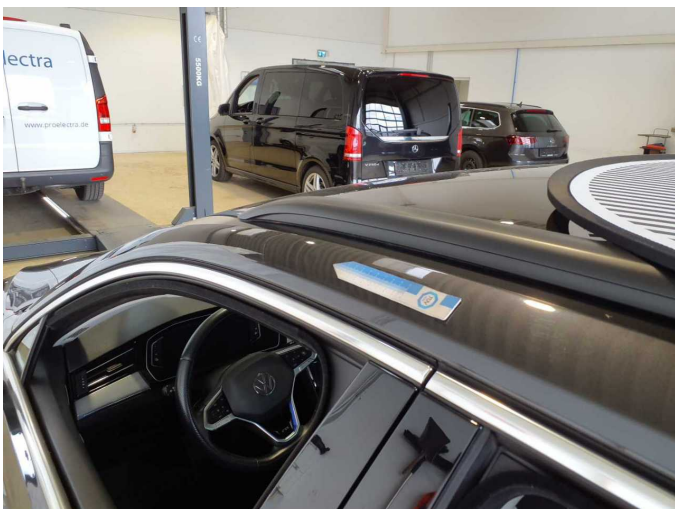
Damage 10: Roof: Roof - Corrosion - Repair and paint



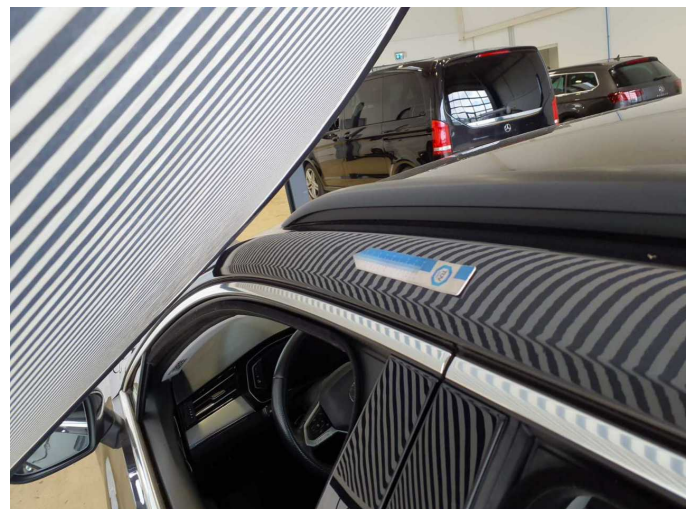
Wear and tear 5: Wheel / tyres: Alloy rim - front right side - Scratch(es) - No deduction



Wear and tear 5: Wheel / tyres: Alloy rim - front right side - Scratch(es) - No deduction



Wear and tear 6: Roof: Roof rail - left side - dent(s) - No deduction



Wear and tear 6: Roof: Roof rail - left side - dent(s) - No deduction



Wear and tear 7: Indicator - front: Mirror - right side - Scratch(es) - No deduction



Wear and tear 7: Indicator - front: Mirror - right side - Scratch(es) - No deduction



Wartungshistorie

(gemäß Auftraggeber Informationen)

Fahrgestellnummer: WVWZZZ3CZME096232
Hersteller / Modell: VOLKSWAGEN VOLKSWAGEN Passat Variant 1.4 TSI Plug-In-Hybrid DSG GTE

Datum	KM-Stand	Beschreibung
12.03.2026	123.769	AU; Getriebeöl ern/prüfen; Motoröl b. Wartung; Ölfilter ern; Regelwartungsdienst; Wartung Sonstiges
16.09.2025	107.606	Bremse Sonstiges; Bremsflüssigkeit; Bremsflüssigkeit ern; Bremsklötze hinten; Bremsscheiben + Klötze v; Bremsscheiben hinten; Bremsscheiben vorne; Motoröl b. Wartung; Ölfilter ern; Ölwechsel; Systemtest/Eigendiagnose; Wartung Sonstiges
21.02.2025	94.563	Systemtest/Eigendiagnose
04.02.2025	92.867	Luftfiltereinsatz ern; Motoröl b. Wartung; Ölfilter ern; Regelwartungsdienst; Wartung Sonstiges; Zündkerzen ern
25.10.2024	80.906	Motoröl b. Wartung; Ölfilter ern; Ölwechsel; Wartung Sonstiges
17.04.2024	64.722	AU; Getriebeöl ern/prüfen; Motoröl b. Wartung; Ölfilter ern; Regelwartungsdienst; Wartung Sonstiges
23.08.2023	46.524	Bremsflüssigkeit; Bremsflüssigkeit ern; Motoröl b. Wartung; Ölfilter ern; Ölwechsel; Wartung Sonstiges
30.09.2022	30.722	Motoröl b. Wartung; Ölfilter ern; Regelwartungsdienst; Wartung Sonstiges
07.03.2022	16.141	Motoröl b. Wartung; Ölfilter ern; Ölwechsel; Wartung Sonstiges