

Expertise

Protocol number: 43488009
Order number / reference: 25764302
Inspection date: 21 Jan 2026

Manufacturer: Skoda

Model: Kodiaq 2.0 TDI DSG Tour

VIN: TMBJJ9NS3P8024174



Vehicle details

Manufacturer / Type / Model / Equipment

Skoda Kodiaq 2.0 TDI DSG Tour

Vehicle Identification number TMBJJ9NS3P8024174

Mileage (Read) 178,899 km

First registration 24 Jan 2023

Number of holders 1

Next periodical technical inspection 01/2026
(Report not on hand)

Power / Engine displacement 110 kw / 1,968 ccm

Fuel type / Cylinder Diesel / 4

Gearbox / Number of gears Automatic / 7

Type of drive Front drive

Type of vehicle SUV

Colour / colour code Black-Magic Perleffekt

Doors / Seats 5 / 5

Upholstery type Cloth

Colour of upholstery Black

Vehicle with smoke odor no



Vehicle details

Maintenance booklet / proof	digital proof / complete	Next maintenance in	18,900 km
Last maintenance on / at	11/2025 at 174,434 km		
Key is / should be	2 / 2	FZG documents	ZB#2 (B) was available (copy), ZB#1 (S) was not available
		Letter No.	GN450850
Previous damage / Accident	Detectable	Repainting	Detectable
Inspection conditions	sufficient	Lifting equipment / pit	yes
Test drive	Not performed	Engine function test	Performed
Manufacturer key number/ type code number	8004 / ART 03730		
Emission standard	EURO6;WLTP;AP;PI/CI; M, N1 I	Fine dust sticker	
Permitted total weight	2,453 kg	Empty weight	

Tyres

Mounted tyres

#	Tyre size	Type of tyre	Manufacturer	Tread depth
1)	215/65 R17 103H	Winter tyres on Light alloy	Pirelli	3mm / 3mm
2)	215/65 R17 103H	Winter tyres on Light alloy	Pirelli	6 mm
	215/65 R17 103H	All-season tyres on Light alloy	Pirelli	6 mm

Additional tyres

#	Tyre size	Type of tyre	Manufacturer	Tread depth
1)	235/50 R19 99V	Summer tyres on Light alloy	Goodyear	2mm / 2mm
2)	235/50 R19 99V	Summer tyres on Light alloy	Goodyear	3mm / 3mm

Replacement

Typ	Tyre size	Type of tyre	Manufacturer	Tread depth
	Tirefit	Expiration date 03/2026		

Legend: Tread depth for tires on the left is in the first place, for tires on the right is in the second place on the axle in the direction of travel



Equipment

Standard equipment

- 12V socket in the center console and in the trunk
- Storage compartments behind the wheel house in the trunk
- Airbag, driver and passenger
- Airbag, head airbags
- Allergen filter
- Traction control (ASR)
- Traveller Plus assistance system (DSG)
- Electrically adjustable and heated exterior mirrors with integrated side indicators
- Hydraulic brake assist (HBA)
- Headliner Gray
- Anodized Cross decorative inlay
- diesel particulate filter
- Third brake light
- eCall
- Electronic parking brake including auto-hold function
- ESC Electronic Stabilization Control
- Electric windows front and rear
- Front radar assistant including city emergency braking function with person detection
- Transmission: 7-speed dual-clutch transmission (DSG)
- Illuminated glove compartment
- Kessy - keyless entry and start-stop system
- Boot cover, roll-up and removable
- LED matrix headlights and dynamic high beam assist (Light Assist)
- Steering wheel: Sport leather steering wheel with multifunction buttons including shift paddles
- Front center armrest, including storage compartment
- Engine drag torque control (MSR)
- Multi-collision brake
- Package: Family
- Parking sensors front & rear
- wheel house cover
- Radio accessories: 8 speakers
- Radio accessories: SmartLink
- Tire pressure monitoring
- Wheels: RunFlat tires with Seal technology
- Rear seat backrest 60:40 split folding, longitudinally adjustable, backrest angle
- Power steering, electromechanical
- Seats: Heated front and outer rear seats
- Seats: Height-adjustable front seats
- Sun visor on driver and passenger side with illuminated vanity mirror
- Telephone: Convenient hands-free telephone system including phone box
- Lashing eyes in the trunk
- Central locking with radio remote control
- Storage compartment on the left wheel house
- Deselecting the standard extended warranty
- front aero windshield wipers
- Airbag, driver's knee airbag
- Airbag, front side airbags
- Anti-lock braking system (ABS)
- Dashboard in black / black, door trim in black
- Electrically folding exterior mirrors including interior and driver's side mirrors with automatic dimming
- Hill start assist
- Care Connect: Proactive Services (10-year term)
- Roof rails, black
- Anti-theft alarm system
- tachometer
- Easy Start (start-stop button)
- Electric tailgate operation including comfort opening
- Electronic transverse differential lock (XDS+)
- Headlight assistant and rain sensor
- High Beam Assist (Light Assist)
- front and rear floor mats
- Closed storage compartment on the driver's side
- Tinted windows
- Isofix anchorage on the outer rear seats including top tether
- Headrests height adjustable front and rear
- LED taillights in crystal glass look & LED license plate lighting
- Reading lights on the front roof lining
- Rear center armrest with cup holders and through-loading option
- Multifunction display in the instrument cluster, color
- Fog lights with integrated LED daytime running lights
- Parking steering assistant
- Upholstery: Cloth
- Radio: Amundsen infotainment system (tour)
- Radio accessories: Digital radio reception DAB+
- Radio accessories: Wireless SmartLink
- Wheels: 19" Procyon Aero grey gloss-machined alloy wheels
- Heated windshield washer nozzles, front
- Headlights washer / wiper system
- Kodiaq seat belts
- Seats: Adjustable lumbar supports in the front seats
- Skoda Care Connect
- Sunshade roller blind for the rear side windows
- Sunset
- Front door sill trims
- Variable fastening concept in the trunk
- Immobiliser



Extra equipment

- 17" Premium Alloy Winter Wheels
- Driving profile selection
- Climatronic air conditioning (3-zone) (fully automatic, separately adjustable for driver, front passenger and rear seats)
- Electric panoramic sunroof including sunshade (no glasses compartment in the headliner)
- Proactive occupant protection including rear side airbags
- Rear view camera
- Seats: 3rd row of seats (7-seater), cargo cover in the trunk
- Running boards
- Trailer coupling, swiveling (with electric release, including trailer stabilization)
- Paint finish: Metallic / Pearl effect
- LED ambience
- Package: Business Columbus (Tour) (Dynamic Radio Navigation System. Columbus - Capacitive 9.2" color display - Digital instrument cluster (Virtual Cockpit) - 230V socket and one USB charging port (Type-C) - Luggage net partition - Infotainment Online (3-year validity))
- Auxiliary heating
- Windscreen, wirelessly heated

Brief expert findings

Documents submitted	At the time of the inspection, the vehicle registration certificate Part 2 (title) was available, but the vehicle registration certificate Part 1 (document) was not. (Copy)
VIN comparison	The vehicle identification number (VIN) was read from the vehicle and its conformity with the submitted documents was verified during the inspection by the undersigned.
Inspection	The inspection conditions were sufficient for the assessment of the vehicle. Lifting equipment and a pit were available for examining the vehicle.
Test drive	No test drive/shunting maneuver was carried out during the inspection of the vehicle.
Engine function test	An engine test run was performed.

Value reducing factors

No.	Component group	Description
1	Interior	Cargo area floor - Soiled - Conditioning
2	Door - rear right side	Door - dent(s) - Smooth repair work
3	2nd wheel set	1 tyre - Damaged - Replace
4	Wheel / tyres	Tyre - front (2x) - Does not meet the leasing specifications - Replace
5	2nd wheel set	2 alloy rims (2x) - Scratch(es) - Loss in value
6	Rear bumper	Rear bumper - Unprofessionally repaired - Paint
7	Headlight	Headlight - right side (nicht im Lichtkegel) - Scratch(es) - Replace

Previous damages

No.	Previous damage	Extent of damage (Net)
1	Side right, Provided by user / customer, from 24 Oct 2025	1.122,74 €
2	Rear, Provided by user / customer, from 14 Nov 2023	3.558,45 €
3	Rear, Side right, Provided by user / customer, from 25 Oct 2024	4.138,07 €
4	Front, Side - left, Provided by user / customer, from 14 Aug 2025	4.372,31 €

Repainting

No.	Repainting
1	Mudguard - left side, Door - rear right side, Door - front right side, Professionally carried out, Invoice of repair done Non-existent
2	Bumper rear, Unprofessionally carried out



Paint coat thickness measurement

Mudguard - left side	226 µm	Door - rear right side	164 µm
Door - front right side	165 µm		

Order/Scope of order

The order was placed to prepare a sales report for the vehicle described. This includes the following:

- Description of core relevant information about the vehicle
- Documentation of equipment features
(Delivery by third-party service providers)
- Documentation of damage, defects, missing parts
- Documentation of previous damage, unrepaired previous damage, repainting
- a brief visual or functional inspection of the equipment details if possible.
(Functional tests of driver assistance systems are not included in the scope of services!)
- a photo documentation of the vehicle

Basis for the order

This product is based on the Alphabet Fuhrpark GmbH guidelines for vehicle returns and valuations. The expert makes the explicit findings in each individual case objectively within the framework of the specified standards based on his or her own expertise.

The vehicle inspection takes place in a disassembled state.

Damage or defects that can only be detected during disassembly/diagnosis work or through advanced knowledge remain within the scope of the prognosis risk. An extended risk exists for concealed defects caused by fraudulent deception and not identifiable by the expert.

Damage or defects resulting from normal use or wear and tear of the vehicle will be accepted according to the applicable standard.

There was no explicit identification or monetary consideration of the expected features within the product.

Features which in their nature and severity slightly exceed normal use but do not constitute unacceptable damage will be documented and identified under signs of use if necessary.

Damage or defects that can no longer be attributed to normal use or wear and tear according to the underlying standard are listed in the product under value-reducing factors.

Depending on the product specification, a monetary ID can be provided. If this takes place, the costs can be 100% d or pro rata depending on the vehicle's age and mileage.

Previous damages

According to available information previous damages were repaired at the vehicle. Traces of repairs, which allow conclusions about the area of repair, were not recognizable during the inspection.



Figure 1: Diagonal front (left)



Figure 2: Diagonal front (right)



Figure 3: Diagonal rear (left)



Figure 4: Diagonal rear (right)



Figure 5: Interior - front



Figure 6: Interior - rear



Figure 7: Instrument cluster



Figure 8: Instrument panel



Figure 9: Interior 360° view



Figure 10: Cargo area



Figure 11: Cargo area



Figure 12: VIN



Figure 13: Mounted tyres

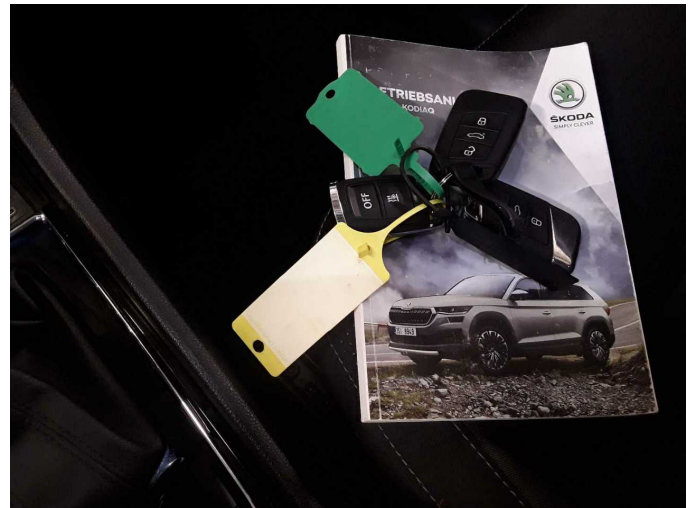


Figure 14: Documents

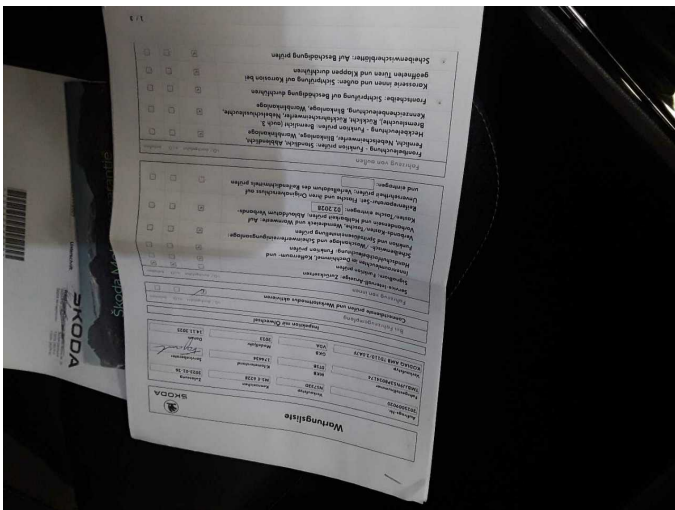


Figure 15: Documents



Figure 16: Additional tyres



Figure 17: Navigation

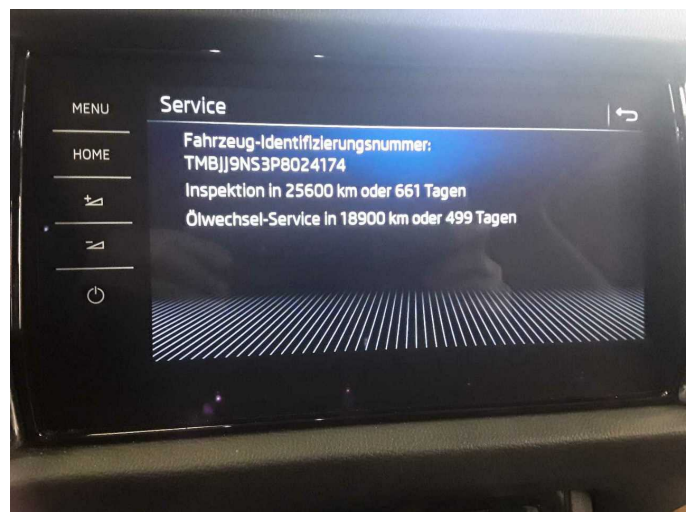


Figure 18: Misc.

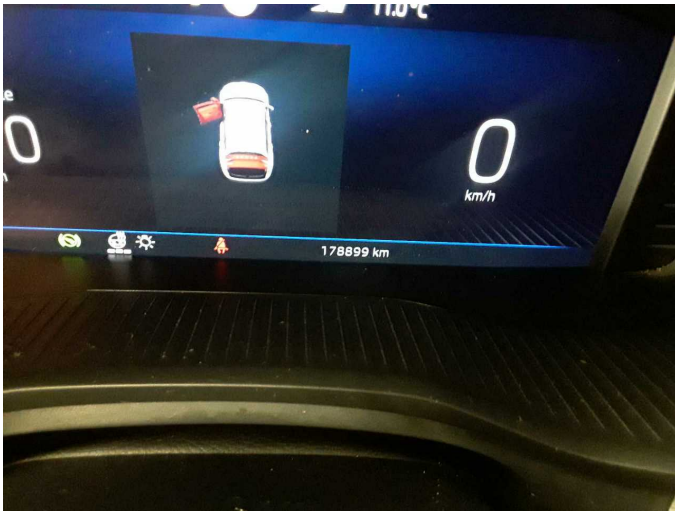


Figure 19: Misc.



Figure 20: Misc.



Figure 21: Misc.



Figure 22: Misc.



Figure 23: Misc.

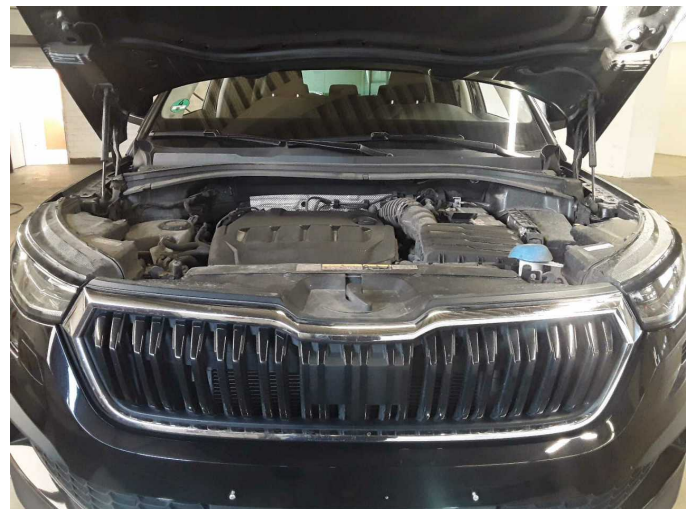


Figure 24: Misc.



Figure 25: Misc.



Figure 26: Misc.

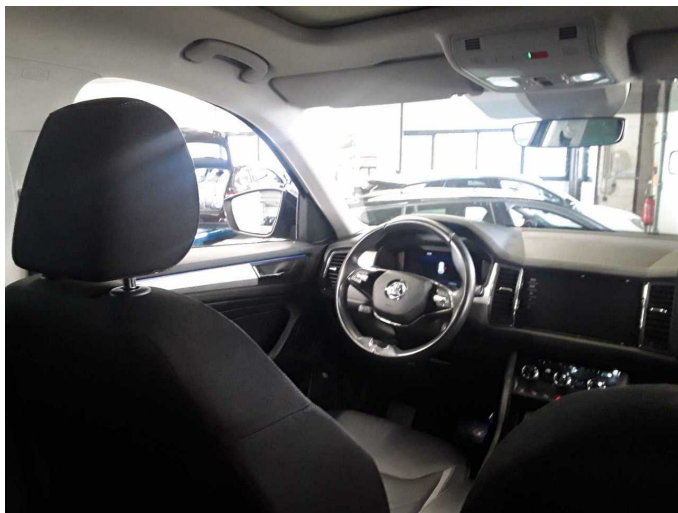


Figure 27: Misc.



Figure 28: Misc.



Figure 29: Misc.

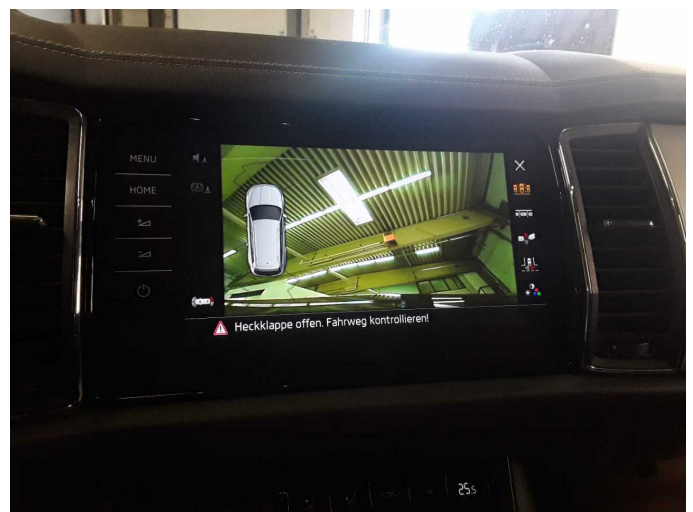


Figure 30: Misc.



Figure 31: Misc.



Figure 32: Misc.

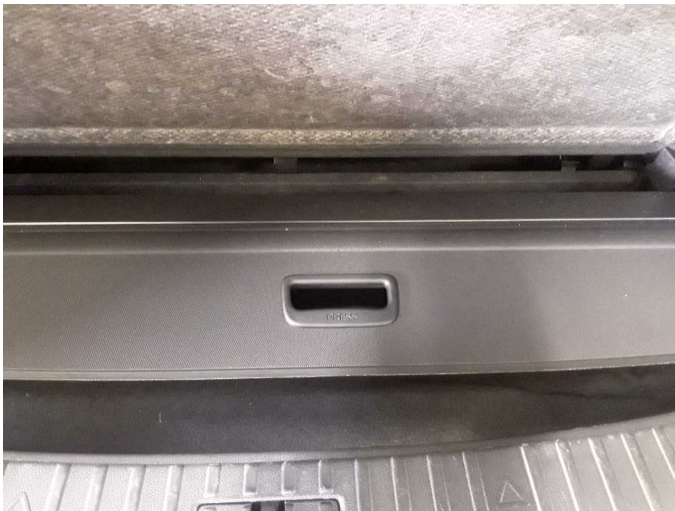


Figure 33: Misc.



Figure 34: Misc.



Figure 35: Misc.



Damage 1: Interior: Cargo area floor - Soiled - Conditioning



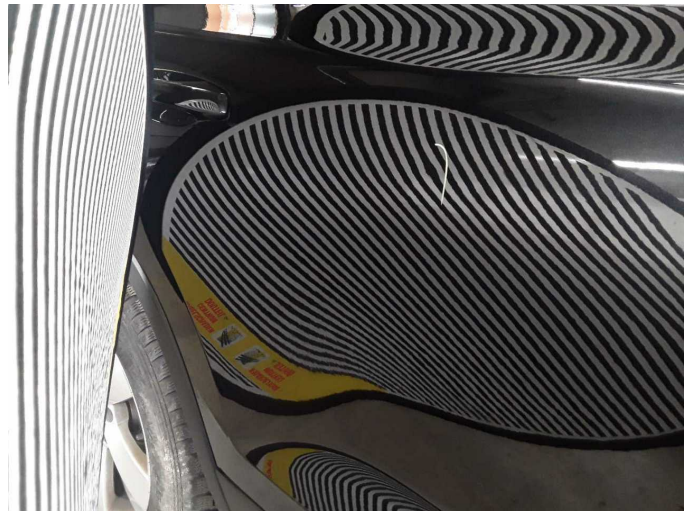
Damage 1: Interior: Cargo area floor - Soiled - Conditioning



Damage 1: Interior: Cargo area floor - Soiled - Conditioning



Damage 2: Door - rear right side: Door - dent(s) - Smooth repair work



Damage 2: Door - rear right side: Door - dent(s) - Smooth repair work



Damage 3: 2nd wheel set: 1 tyre - Damaged - Replace



Damage 3: 2nd wheel set: 1 tyre - Damaged - Replace



Damage 4: Wheel / tyres: Tyre - front (2x) - Does not meet the leasing specifications - Replace



Damage 4: Wheel / tyres: Tyre - front (2x) - Does not meet the leasing specifications - Replace



Damage 4: Wheel / tyres: Tyre - front (2x) - Does not meet the leasing specifications - Replace



Damage 4: Wheel / tyres: Tyre - front (2x) - Does not meet the leasing specifications - Replace



Damage 4: Wheel / tyres: Tyre - front (2x) - Does not meet the leasing specifications - Replace



Damage 5: 2nd wheel set: 2 alloy rims (2x) - Scratch(es) - Loss in value



Damage 5: 2nd wheel set: 2 alloy rims (2x) - Scratch(es) - Loss in value



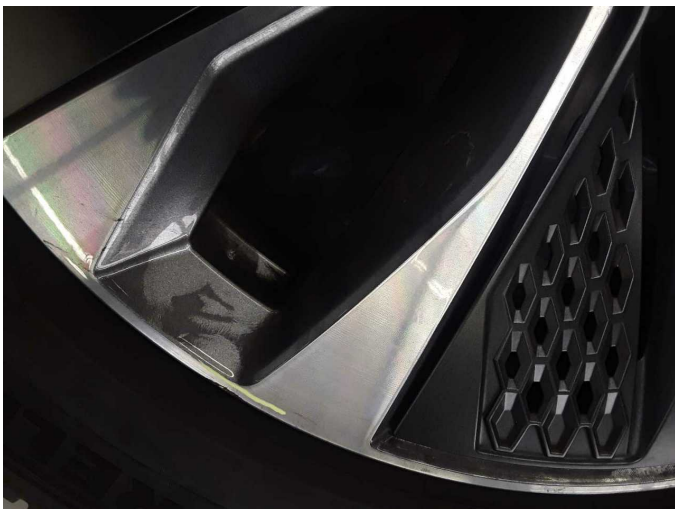
Damage 5: 2nd wheel set: 2 alloy rims (2x) - Scratch(es) - Loss in value



Damage 5: 2nd wheel set: 2 alloy rims (2x) - Scratch(es) - Loss in value



Damage 5: 2nd wheel set: 2 alloy rims (2x) - Scratch(es) - Loss in value



Damage 5: 2nd wheel set: 2 alloy rims (2x) - Scratch(es) - Loss in value



Damage 5: 2nd wheel set: 2 alloy rims (2x) - Scratch(es) - Loss in value



Damage 6: Rear bumper: Rear bumper - Unprofessionally repaired - Paint



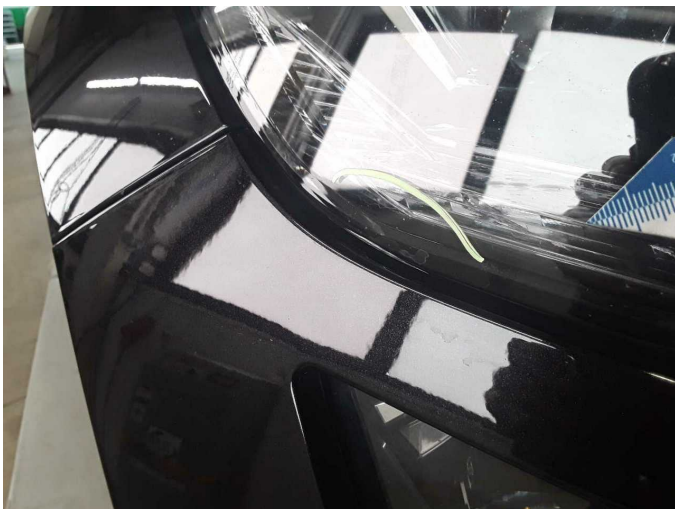
Damage 6: Rear bumper: Rear bumper - Unprofessionally repaired - Paint



Damage 6: Rear bumper: Rear bumper - Unprofessionally repaired - Paint



Damage 7: Headlight: Headlight - right side (nicht im Lichtkegel) - Scratch(es) - Replace



Damage 7: Headlight: Headlight - right side (nicht im Lichtkegel) - Scratch(es) - Replace



Damage 7: Headlight: Headlight - right side (nicht im Lichtkegel) - Scratch(es) - Replace



Mudguard - left side: 226 µm



Door - rear right side: 164 µm



Door - front right side: 165 µm



Wartungshistorie

(gemäß Auftraggeber Informationen)

Fahrgestellnummer: TMBJJ9NS3P8024174
Hersteller / Modell: SKODA SKODA Kodiaq 2.0 TDI DSG Tour

Datum	KM-Stand	Beschreibung
14.11.2025	174.434	Bremse Sonstiges; Bremsklötze hinten; Bremsscheiben + Klötze h; Bremsscheiben hinten; Kraftstofffilter ern; Motoröl b. Wartung; Ölfilter ern; Regelwartungsdienst; Systemtest/Eigendiagnose; Wartung Sonstiges
30.06.2025	146.739	Bremse Sonstiges; Bremsklötze vorne; Motoröl b. Wartung; Ölfilter ern; Regelwartungsdienst; Systemtest/Eigendiagnose; Wartung Sonstiges
09.01.2025	117.684	Bremse Sonstiges; Bremsflüssigkeit; Bremsflüssigkeit ern; Bremsklötze hinten; Bremsklötze vorne; Bremsscheiben hinten; Bremsscheiben vorne; Getriebeöl ern/prüfen; Luftfiltereinsatz ern; Motoröl b. Wartung; Ölfilter ern; Regelwartungsdienst; Wartung Sonstiges
03.07.2024	87.640	Kraftstofffilter ern; Motoröl b. Wartung; Ölfilter ern; Regelwartungsdienst; Wartung Sonstiges
31.05.2024	83.452	Bremse Sonstiges; Bremsklötze vorne; Bremsscheiben vorne
23.04.2024	75.000	Reparatur Sonstiges; Systemtest/Eigendiagnose; Wartung Sonstiges
24.01.2024	60.873	Bremse Sonstiges; Bremsklötze hinten; Bremsscheiben + Klötze h; Bremsscheiben hinten; Motoröl b. Wartung; Ölfilter ern; Regelwartungsdienst; Systemtest/Eigendiagnose; Wartung Sonstiges
15.08.2023	31.437	Motoröl b. Wartung; Ölfilter ern; Regelwartungsdienst; Wartung Sonstiges