

Expertise

Protocol number: 46119861
Order No. / Reference: 26508505
Inspection date: 24 Jun 2026

Manufacturer: Ford

Model: Focus Turnier 1.0 EcoBoost Start-Stopp-System Aut. TITANIUM X

VIN: WF0PXXGCHPMC81582



Vehicle details

Manufacturer / Type / Model / Equipment

Ford Focus Turnier 1.0 EcoBoost Start-Stopp-System Aut. TITANIUM X

Vehicle Identification number WF0PXXGCHPMC81582

Mileage (Read) 106,987 km

First registration 2 Nov 2021

Number of holders 1

Next periodical technical inspection 11/2026

(Report on hand)

Power / Engine displacement 92 kw / 999 ccm

Fuel type / Cylinder Petrol / 3

Gearbox / Number of gears Automatic / 8

Type of drive Front drive

Type of vehicle Station wagon

Colour / colour code Frozen White

Doors / Seats 5 / 5

Upholstery type Cloth

Colour of upholstery Black



Vehicle details

Maintenance booklet / proof	digital proof / complete	Next maintenance in	39 %
Last service on / at	09/2024 at 59,274 km		
Key is / should be	2 / 2	FZG documents	ZB#2 (B) was available (copy), ZB#1 (S) was not available.
		Letter No.	GD592380
Previous damage / Accident	Detectable	Repainting	None detectable
Inspection conditions	sufficient	Lifting equipment / pit	No
Test drive	Not performed	Engine function test	Performed
Manufacturer key number/ type code number	8566 / BPP 00576		
Emission standard	EURO6;WLTP;AP;PI/CI; M, N1 I	fine dust sticker	
Permitted total weight	1,970 kg	Empty weight	

Tyres

Mounted tyres

#	Tyre size	Type of tyre	Manufacturer	Tread depth
1)	205/60 R16 96H	Winter tyres on Steel rim with wheel cover	Continental	7mm / 7mm
2)	205/60 R16 96H	Winter tyres on Steel rim with wheel cover	Dunlop	6mm / 6mm

Additional tyres

#	Tyre size	Type of tyre	Manufacturer	Tread depth
1)	205/60 R16 92V	Summer tyres on Light alloy	Goodyear	5mm / 5mm
2)	205/60 R16 92V	Summer tyres on Light alloy	Goodyear	5mm / 5mm

Replacement

Typ	Tyre size	Type of tyre	Manufacturer	Tread depth
	Tirefit	Expiration date 10/2025		

Legend: Tread depth information for the left tire is listed first, for the right tire it is listed second on the axle in the direction of travel.

TÜV SÜD Auto Partner GmbH
Wiesenring 2
04159 Leipzig

Inspection location
ARS Altmann AG Automobillogistik
Römerstraße 3
64560 Riedstadt



Equipment



Standard equipment

- Anti-lock braking system (ABS) with electronic brake force distribution (EBD)
- Attachment points behind the second row of seats (for safety partition nets and safety partition grilles, e.g. for luggage compartment partition grilles behind the rear seats)
- Back window, heater
- Black trim around the side windows
- Carpet floor mats in the front
- Center console "Premium" front (armrest - 2 cup holders - storage compartments - 12-volt and USB connection)
- Central/double locking (incl. remote control, remote luggage compartment and fuel filler flap release, door lock only on driver's side)
- Chrome trim (on side windows)
- Cruise control
- Driving mode switch, selective
- Electric front and rear windows (with all-around closing function)
- Electro-mechanical power steering (EPAS - Electric Power Assisted Steering)
- Electronic Stability Program (ESP) (with hill start assist, emergency brake assist (EBA) and traction control)
- Emergency brake light (pulsating illumination of the brake lights during hard braking)
- Fog lights (including static cornering lights)
- Ford Easy Fuel (The Ford Easy Fuel convenience refueling system eliminates the need for a separate internal fuel filler cap and prevents misfueling by detecting the size difference between petrol and diesel nozzles. The filler neck only opens when the correct fuel is used.)
- Front and rear parking pilot system
- Headlight assistant with day/night sensor
- Illuminated glove compartment
- Instrument lighting, adjustable
- Intelligent safety system (front airbag for driver and front passenger - front and rear head and shoulder airbags - side airbag for driver and front passenger - seat belt tensioners and force limiters in the front and on the outer seats of the 2nd row - 3-point seat belts on all seats, height-adjustable in the front - safety pedal assembly)
- Lane keeping assist including lane keeping assist
- Luggage compartment floor, adjustable in two ways
- Luggage compartment lighting
- Make-up mirrors in driver and passenger sun visors
- Otto particulate filter
- Package: Comfort (2-zone automatic climate control for driver and front passenger side, separately adjustable - Ford Key Free system (keyless locking/unlocking) including Ford Power Start function (keyless starting) - Windscreen wipers with rain sensor, variable sensitivity adjustment - Interior mirror, automatically dimming - Headlights with delayed shut-off)
- Pollen filter and dust filter
- 12-volt power outlet in the luggage compartment
- Airbag: Passenger airbag deactivation
- Ambient lighting in the front (including door storage, footwell and cup holder lighting with LED technology)
- Child safety lock on the rear doors, manual
- Driver information system (on-board computer with fuel consumption and mileage information as well as outside temperature display (monochrome in the Trend trim) - color)
- Electric parking brake with auto-hold function (with one-button operation)
- Electronic immobilizer
- Electronic Shifter
- Exterior mirrors in body color, driver and passenger side, electrically adjustable and heated (with integrated turn signals and ambient lighting and electrically foldable)
- Fabric headliner
- Ford ECO-Coach (signals environmentally friendly driving style)
- Ford Power Start function (with Ford Key Free system - keyless locking/unlocking)
- FordPass Connect including eCall, live traffic information (only with navigation) and Wi-Fi hotspot (information about the current status or location of the vehicle as well as control of selected vehicle functions via smartphone with the FordPass app - eCall emergency call system to send an emergency call in the event of an accident or when manually activated - Real-time traffic information (only in conjunction with navigation system) - Wi-Fi hotspot (up to 4G/LTE7, for up to 10 mobile devices))
- Headrests: 2 front and 3 rear, height adjustable
- Heat-insulating glazing, tinted
- Interior lighting with LED technology (front and rear and map reading lights at the front)
- Isofix mounting (including top tether anchor points on the outer seats of the 2nd row)
- Lashing eyes in the luggage compartment
- LED daytime running lights (headlights with LED low beam)
- MyKey key system (individually programmable second key)
- Navigation: Ford Navigation, Ford SYNC 3 with AppLink, 8" touchscreen (20.3 cm) with DAB/DAB+ (Ford SYNC 3 communication and entertainment system with voice control, radio, 2 USB ports, 6 speakers and steering wheel remote control, Bluetooth hands-free calling and audio streaming, SMS reading and sending option, voice control for audio and telephone, support for Android Auto and Apple CarPlay, dynamic navigation with TMCpro, road map for Europe, voice control, destination input and search, advanced voice output, detailed visualization, Michelin travel guide for Europe)
- Paint finish: Solid



- Pre-Collision Assist (Forward Alert system with pedestrian and bicycle detection)
- Rear view camera
- rear window wiper
- Roof rails, aluminum
- Seats: Driver's seat height adjustable (with manually adjustable lumbar support)
- Seats: Rear seat backrest (foldable, 60:40 split)
- Speed limiter (Intelligent speed limiter with speed limit display)
- Start-stop system
- Steering wheel: 3-spoke design steering wheel (in Sensico leather look)
- Tachometer
- Tire Pressure Monitoring System (TPMS)
- Tire repair kit (for use at a maximum speed of 80 km/h)
- Transmission: 8-speed automatic transmission
- Upholstery: Cloth
- Warning system for unfastened seat belts for the 1st and 2nd rows of seats

- Post-Collision Assist (In the event of a severe collision, which would also deploy the airbag and in which the driver might be incapacitated, this system initiates the braking process. This reduces the risk of colliding with further obstacles and road users after the initial collision. The driver can intervene and operate the accelerator or brake pedal manually throughout the entire process.)
- Rear center armrest (with 2 cup holders)
- Roof spoiler painted in car color
- Seats: Front sports seats with enhanced lateral support
- Seats: Map grid on the driver's and front passenger's seat backrests
- Seats: Passenger seat height-adjustable, manually (with adjustable lumbar support)
- Steering column, adjustable (adjustable in height and reach)
- Tires: 6.5 J x 16 alloy wheels (4) with 205/60 R 16 tires (in 15-spoke design)
- Visibility package (windscreen wipers with rain sensor, adjustable sensitivity - interior mirror, automatically dimming - headlights with delayed shut-off)

Extra equipment

- LED headlights (with LED taillights)
- Package: Safety Package (Traffic Sign Recognition System - Wrong-Way Driver Warning Function - High Beam Assist (in conjunction with intelligent LED headlights with glare-free high beam assist) - Driver Fatigue Warning)
- Radio: B&O Sound System (675 Watt premium sound system with 10 speakers - including subwoofer based on the renowned sound and design expertise of Bang & Olufsen)
- Seats: Ford ergonomic seat (front seats adjustable in 18 ways: - length, height and tilt of the seat; extendable thigh support; adjustable backrest; lumbar support electrically adjustable in 4 ways; headrest adjustable in 4 ways)
- Tailgate, electric and sensor-controlled

- Display: Head-up display
- Package: Parking package (reversing camera with "Split View" technology - blind spot assist and cross traffic alert with emergency braking function (when reversing out of a parking space) - door edge protection)
- Package: Winter (heated windscreen - heated steering wheel - individually and variably heated front seats)
- Paint finish: Frost White
- Safety partition net for luggage compartment
- Side windows from the 2nd row of seats and rear window, dark tinted.
- Swiveling towbar (incl. ESP trailer stabilization)

Brief expert findings

Documents submitted	At the time of the inspection, the vehicle registration certificate Part 2 (title) was available, but the vehicle registration certificate Part 1 (document) was not. (Copy)
VIN comparison	The vehicle identification number (VIN) was read from the vehicle and its conformity with the submitted documents was confirmed by the undersigned during the inspection.
Inspection	The inspection conditions were sufficient for the assessment of the vehicle. No lifting equipment or pit was available for inspecting the vehicle. Therefore, inspection of the vehicle's underside was only possible to a limited extent.
Test drive	No test drive/shunting maneuver was carried out during the inspection of the vehicle.
Engine function test	An engine test run was performed.

Value reducing factors

No.	Component group	Description
1	Equipment	Tirefit filler - Expired - Replace
2	Side panel - rear right side	Sill - dent(s) - Smart repair



Previous damages

No.	Previous damage	Extent of damage (Net)
1	Front, Side - left, Provided by user / customer, from 23 Sept 2025	2.029,33 €

Order/Scope of Order

An order was placed to prepare a sales report for the described vehicle. This report includes the following:

- Description of key vehicle information
- Documentation of equipment features
(*Delivery by third-party service providers*)
- Documentation of damage, defects, missing parts
- Documentation of prior damage, unrepaired prior damage, repainting
- A brief visual or functional inspection of the equipment details, if possible.
(*Functional testing of driver assistance systems is not included in the scope of services!*)
- a photographic documentation of the vehicle

Basis for the order

This product is based on the guidelines for vehicle returns and valuations published by Alphabet Fleet GmbH. The expert makes the specific findings in each individual case objectively, within the framework of the prescribed standards, based on their own expertise.

The vehicle inspection takes place in a fully assembled, unassembled state.

Damage or defects that can only be detected during disassembly/diagnostic work or through further investigation remain within the realm of prognostic risk. An increased risk exists due to concealed defects caused by fraudulent misrepresentation and which were not identifiable by the expert.

Damage or defects resulting from normal use or wear and tear of the vehicle will be accepted in accordance with the applicable standard.

There was no explicit identification or monetary consideration of the expected features within the product.

Features which, in their nature and extent, slightly exceed normal use but do not constitute unacceptable damage, will be documented and indicated as signs of wear, if applicable.

Damage or defects that, according to the applicable standard, can no longer be attributed to normal use or wear and tear are listed under "Value Reducing Factors" in the product description.

Depending on the product specification, a monetary ID can be provided. If this takes place, the costs can be 100% d or pro rata depending on the vehicle's age and mileage.

Previous damages

According to available information previous damages were repaired at the vehicle. Traces of repairs, which allow conclusions about the area of repair, were not recognizable during the inspection.

Comments

Die Unterbodenbesichtigung war nur ebenerdig & eingeschränkt möglich. Mehrkosten möglich.

- Winterreifensatz ist kein Bestandteil des Auslieferungsumfangs.



Figure 1: Diagonal front (left)



Figure 2: Diagonal front (right)



Figure 3: Diagonal rear (left)



Figure 4: Diagonal rear (right)



Figure 5: Interior - front



Figure 6: Interior - rear



Figure 7: Instrument cluster



Figure 8: Instrument panel



Figure 9: Interior 360° view



Figure 10: Cargo area



Figure 11: VIN

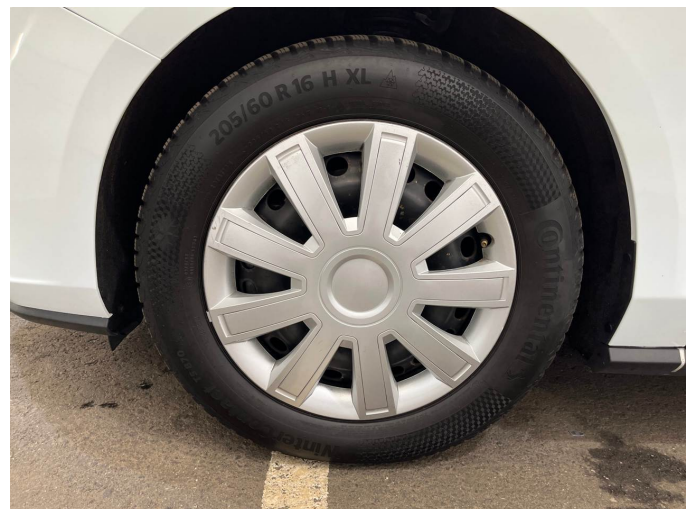


Figure 12: Mounted tyres



Figure 13: Documents

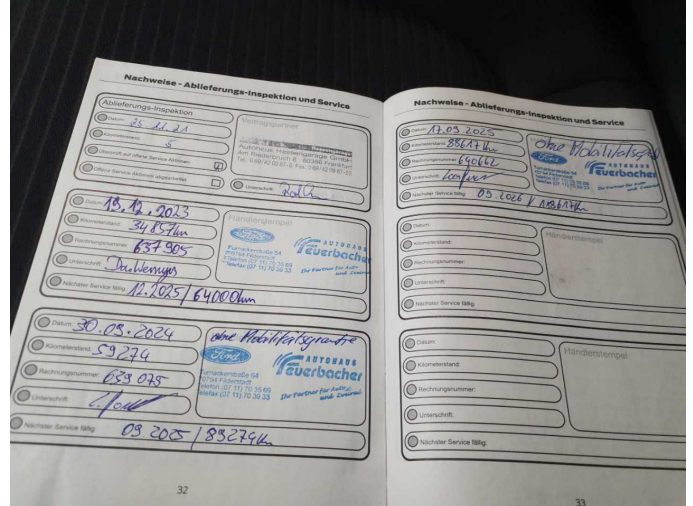


Figure 14: Documents

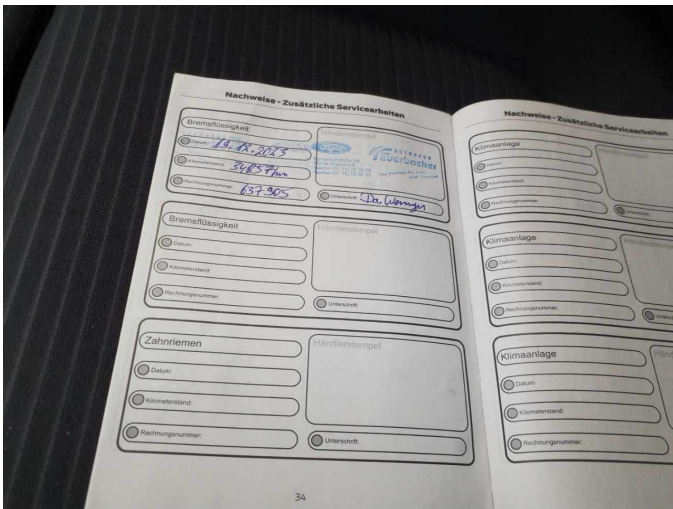


Figure 15: Documents



Figure 16: Documents

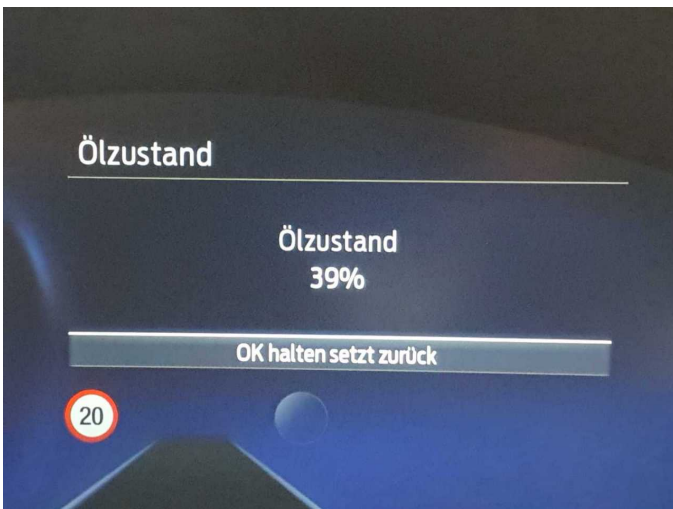


Figure 17: Documents



Figure 18: Additional tyres



Figure 19: Navigation



Figure 20: Misc.



Figure 21: Misc.



Figure 22: Misc.

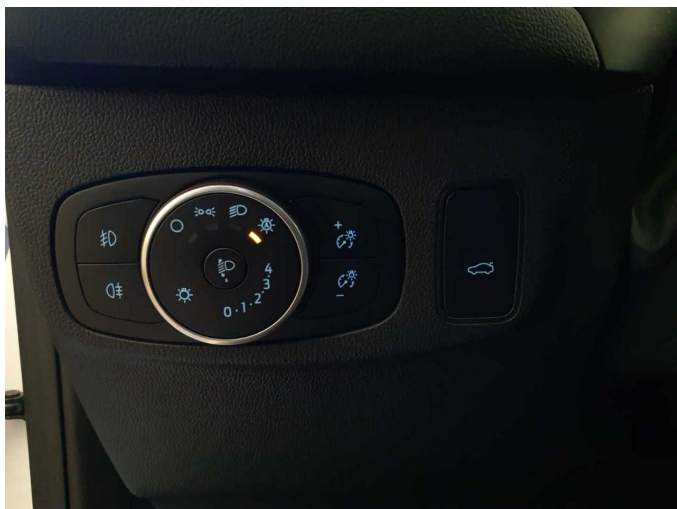


Figure 23: Misc.

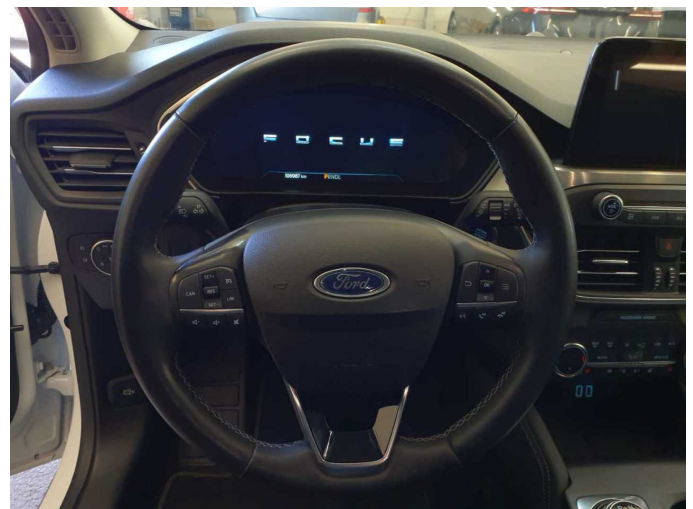


Figure 24: Misc.



Figure 25: Misc.



Figure 26: Misc.



Figure 27: Misc.



Figure 28: Misc.



Figure 29: Misc.



Figure 30: Misc.



Figure 31: Misc.



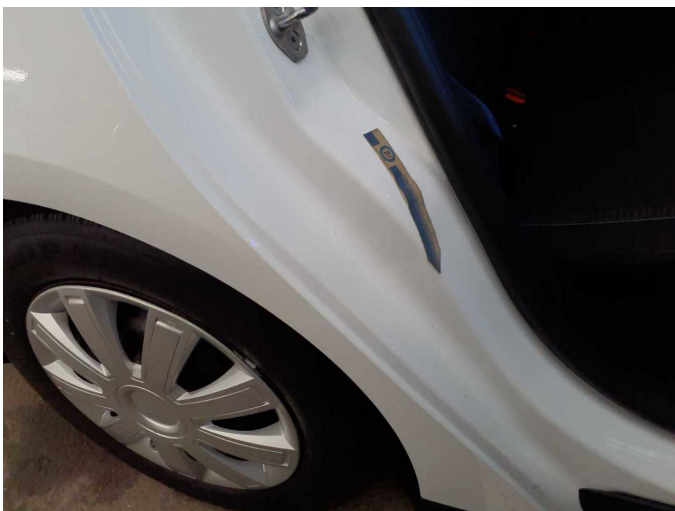
Figure 32: Misc.



Figure 33: Misc.



Damage 1: Equipment: Tirefit filler - Expired - Replace



Damage 2: Side panel - rear right side: Sill - dent(s) - Smart repair



Damage 2: Side panel - rear right side: Sill - dent(s) - Smart repair



Wartungshistorie

(gemäß Auftraggeber Informationen)

Fahrgestellnummer: WF0PXXGCHPMC81582
Hersteller / Modell: FORD FORD Focus Turnier 1.0 EcoBoost Start-Stopp-System Aut.
TITANIUM X

Datum	KM-Stand	Beschreibung
20.11.2024	65.046	AU
30.09.2024	59.274	Bremse Sonstiges; Bremsklötze vorne; Bremsscheiben + Klötze v; Bremsscheiben vorne; Luftfiltereinsatz ern; Motoröl b. Wartung; Ölfilter ern; Regelwartungsdienst; Wartung Sonstiges; Zündkerzen ern
19.12.2023	34.857	Bremsflüssigkeit ern; Motoröl b. Wartung; Ölfilter ern; Regelwartungsdienst; Wartung Sonstiges