

Expertise

Protocol number: 46339669
Order No. / Reference: 26325984
Inspection date: 6 Jul 2026

Manufacturer: Mercedes-Benz

Model: C 200 d T 9G-TRONIC Avantgarde

VIN: W1KAH0DB5PF088047



Vehicle details

Manufacturer / Type / Model / Equipment

Mercedes-Benz C 200 d T 9G-TRONIC Avantgarde

Vehicle Identification number W1KAH0DB5PF088047

Mileage (Read) 45,889 km

First registration 11 Jan 2023

Number of holders 1

Power / Engine displacement 120 kw / 1,993 ccm

Fuel type / Cylinder Hybrid Diesel / E / 4

Gearbox / Number of gears Automatic / 9

Type of drive Rear drive

Type of vehicle Station wagon

Colour / colour code GRAPHITGRAU -
METALLICLACK

Doors / Seats 5 / 5

Upholstery type Cloth / leather
combination

Colour of upholstery Black-Grey

Vehicle with smoke odor no



Vehicle details

Maintenance booklet / proof	digital proof / complete	Next maintenance in	60 Tag(e)
Last service on / at	04/2024 at 20,031 km		
Key is / should be	2 / 2	FZG documents	ZB#2 (B) was available (copy), ZB#1 (S) was not available.
		Letter No.	GM997830
Previous damage / Accident	None detectable	Repainting	None detectable
Inspection conditions	sufficient	Lifting equipment / pit	yes
Test drive	Not performed	Engine function test	Performed
Manufacturer key number/ type code number	2222 / BDF 00145		
Emission standard	EURO6;WLTP;AP;PI/CI; M, N1 I	fine dust sticker	
Permitted total weight	2,400 kg	Empty weight	

Tyres

Mounted tyres			
#	Tyre size	Type of tyre	Tread depth
1)	225/50 R17 94H	Winter tyres on Light alloy	7mm / 7mm
2)	225/50 R17 94H	Winter tyres on Light alloy	7mm / 7mm
Additional tyres			
#	Tyre size	Type of tyre	Tread depth
1)	225/50 R17 94Y	Summer tyres (Without wheel rim)	6mm / 6mm
2)	225/50 R17 94Y	Summer tyres (Without wheel rim)	6mm / 6mm

Legend: Tread depth information for the left tire is listed first, for the right tire it is listed second on the axle in the direction of travel.



Equipment

Standard equipment

- Airbag for driver and front passenger
- Airbag: Center airbag
- Airbag: Windowbag for driver and front passenger
- Left and right exterior mirrors are heated and electrically adjustable
- Roof rails in polished aluminum
- Double cup holder at the front
- EASY-PACK tailgate
- Electronic Stability Program (ESP)
- Velour floor mats
- Transmission: 9-speed automatic, 9G-TRONIC
- Rear bumper in body color
- Interior headliner fabric crystal grey
- KEYLESS-GO start function
- THERMATIC automatic climate control with 1 climate zone
- Front headrests
- Cargo area cover including EASY-PACK safety net
- Steering wheel: Multifunction sports steering wheel in leather
- Package: Storage
- Package: Interior lighting package
- Radio: Extended MBUX functions
- Radio accessories: Digital radio (DAB)
- Radio accessories: Central display
- Tire pressure monitoring system (TPMS)
- Windscreen wipers with rain sensor
- Seats: Rear seat backrests foldable
- Cruise control
- Electronic immobilizer
- Decorative elements in diamond pattern, silver-grey
- Airbag: Automatic passenger airbag deactivation
- Airbag: Side airbag for driver and front passenger
- Ambient lighting with 64 light colors
- Basic services
- Brake assist, active
- Diesel particulate filter
- DYNAMIC SELECT
- ECO start/stop function
- Electric windows (4-way)
- Speed Limit Assistant
- rear window wiper
- Heated rear window
- ISOFIX child seat attachment with top tether in the rear
- Mechanical child safety lock for the rear doors
- Rear headrests (3)
- Paint finish: Solid
- LED High Performance Headlights
- Mercedes-Benz emergency call system
- Center console in high-gloss black
- Package: AVANTGARDE Exterior
- Upholstery: ARTICO leatherette/fabric
- Radio: MBUX
- Radio accessories: Communication module (LTE) for using Mercedes me connect services
- Remote Services Plus
- Power steering
- Lane Keeping Assist, active
- High-visibility vest for drivers
- Central locking with remote control



Extra equipment

- Ambient lighting with 64 light colors (with directly illuminated light lines.)
- Paint finish: Metallic
- Center console diamond pattern silver grey
- Package: Advanced Comfort Package (Heated seats for driver and front passenger - Seat Comfort Package: - Numerous electric and manual adjustment options for the front seats to adapt to the specific body and comfort requirements of the driver and front passenger - Electro-pneumatic 4-way lumbar support and lateral support adjustment with control element on the seat - Electric seat cushion tilt adjustment - Electric height adjustment - Electric backrest adjustment - Electric seat cushion depth adjustment - Mechanical longitudinal adjustment - Mechanical headrest adjustment)
- Package: Infotainment Package
- Package: Parking (12 ultrasonic sensors - reversing camera - Active Parking Assist with PARKTRONIC: detects free parking spaces, assisted parking, visual and acoustic warning, display of camera and ultrasonic data in the media display - Cross traffic warning: can provide visual and acoustic warnings when reversing out of a parking space and, if necessary, automatically initiate emergency braking - Reverse maneuvering brake: can trigger a braking process - Drive-away assist)
- Type designation removed from trunk lid
- THERMATIC automatic climate control with 2 climate zones (control via the central display or the climate control unit in the center console; sensor system for detecting, for example, indoor/outdoor temperature, sunlight, humidity, and dew point; automatic recirculation (only in conjunction with navigation system); ventilation system consisting of: 3 center vents and 2 side vents; fine dust activated carbon filter for filtering dust, soot, and pollen; dew point sensor; residual heat function for efficient use of engine waste heat)
- Package: Business (for Avantgarde Exterior (P15) or AMG Line Exterior (P31)) (Mirror Package: Electrically folding exterior mirrors with automatic dimming function, ambient lighting with Mercedes-Benz logo projection - Advanced Comfort Package: Heated seats for driver and front passenger, 4-way lumbar support, seat comfort package - Parking Package: Parking package with reversing camera - Infotainment Package: MBUX Navigation Premium, traffic sign assist, smartphone integration - Larger fuel tank)
- Radio accessories: Advanced sound system (with 9 speakers and 225 watts system power)
- Wheels: 43.2 cm (17") light alloy wheels in 5-spoke design (black painted and polished with 225/50 R 17 on 7 J x 17 ET 44.5)
- Seats: Comfort seats
- Heat-insulating dark tinted glass

Brief expert findings

Documents submitted	At the time of the inspection, the vehicle registration certificate Part 2 (title) was available, but the vehicle registration certificate Part 1 (document) was not. (Copy)
VIN comparison	The vehicle identification number (VIN) was read from the vehicle and its conformity with the submitted documents was confirmed by the undersigned during the inspection.
Inspection	The inspection conditions were sufficient for the assessment of the vehicle. Lifting equipment and/or a pit were available for examining the vehicle.
Test drive	No test drive/shunting maneuver was carried out during the inspection of the vehicle.
Engine function test	An engine test run was performed.

Value reducing factors

No.	Component group	Description
1	Door - rear left side	Door (Türdichtung) - Broken / torn - Replace
2	Door - rear right side	Door (Türdichtung) - Broken / torn - Replace
3	Door - front left side	Door - Scratch(es) - Smart repair

Wear and tear

No.	Component group	Description
1	Vehicle glazing	Windscreen - Stone chips - No deduction

The vehicle shows signs of wear and tear commensurate with its age and use.



Order/Scope of Order

An order was placed to prepare a sales report for the described vehicle. This report includes the following:

- Description of key vehicle information
- Documentation of equipment features
(Delivery by third-party service providers)
- Documentation of damage, defects, missing parts
- Documentation of prior damage, unrepaired prior damage, repainting
- A brief visual or functional inspection of the equipment details, if possible.
(Functional testing of driver assistance systems is not included in the scope of services!)
- a photographic documentation of the vehicle

Basis for the order

This product is based on the guidelines for vehicle returns and valuations published by Alphabet Fleet GmbH. The expert makes the specific findings in each individual case objectively, within the framework of the prescribed standards, based on their own expertise.

The vehicle inspection takes place in a fully assembled, unassembled state.

Damage or defects that can only be detected during disassembly/diagnostic work or through further investigation remain within the realm of prognostic risk. An increased risk exists due to concealed defects caused by fraudulent misrepresentation and which were not identifiable by the expert.

Damage or defects resulting from normal use or wear and tear of the vehicle will be accepted in accordance with the applicable standard.

There was no explicit identification or monetary consideration of the expected features within the product.

Features which, in their nature and extent, slightly exceed normal use but do not constitute unacceptable damage, will be documented and indicated as signs of wear, if applicable.

Damage or defects that, according to the applicable standard, can no longer be attributed to normal use or wear and tear are listed under "Value Reducing Factors" in the product description.

Depending on the product specification, a monetary ID can be provided. If this takes place, the costs can be 100% d or pro rata depending on the vehicle's age and mileage.

Previous damages

No apparent prior damage that had been repaired could be found on the vehicle.

Comments

- Winterreifensatz ist kein Bestandteil des Auslieferungsumfangs.



Figure 1: Diagonal front (left)



Figure 2: Diagonal front (right)



Figure 3: Diagonal rear (left)



Figure 4: Diagonal rear (right)

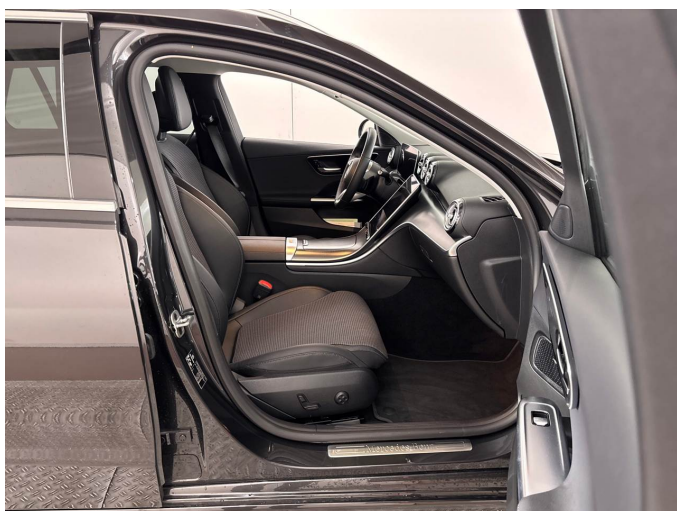


Figure 5: Interior - front



Figure 6: Interior - rear



Figure 7: Instrument cluster



Figure 8: Instrument panel

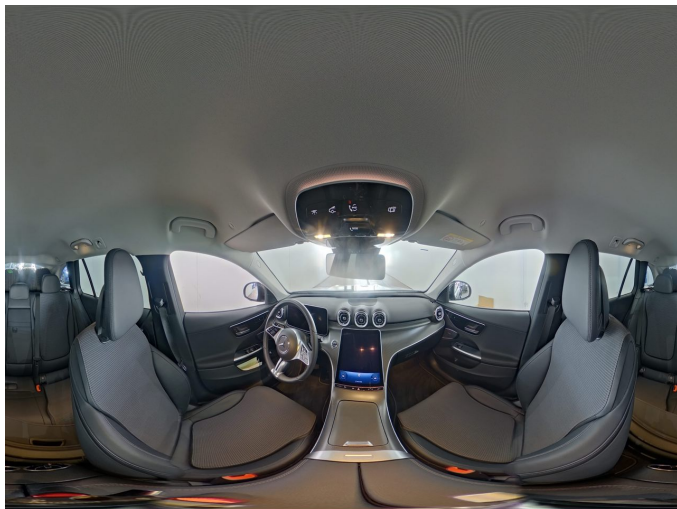


Figure 9: Interior 360° view



Figure 10: Cargo area

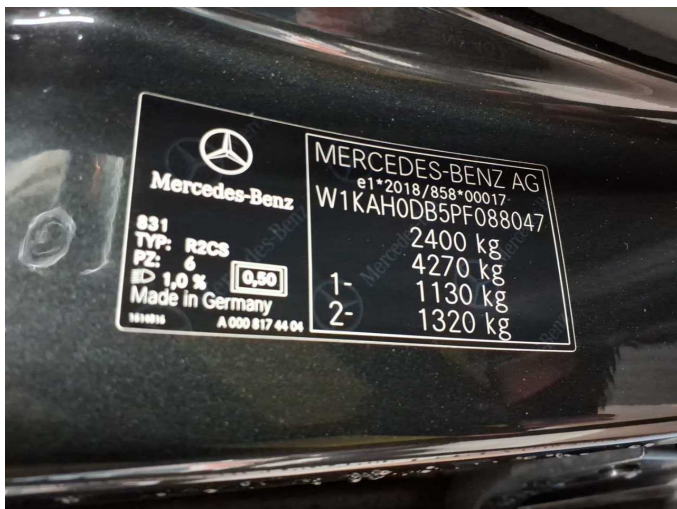


Figure 11: VIN



Figure 12: Mounted tyres



Figure 13: Documents



Figure 14: Documents

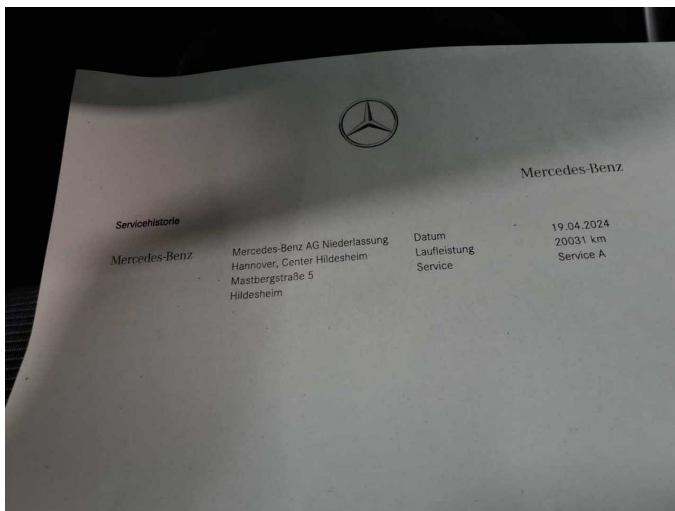


Figure 15: Documents



Figure 16: Additional tyres

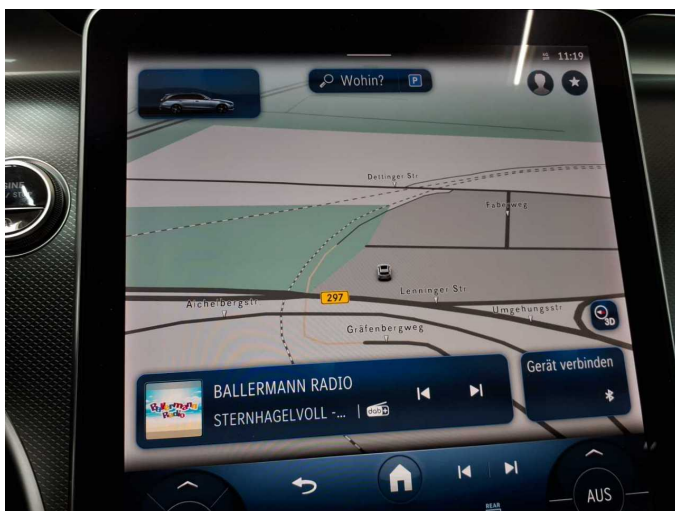


Figure 17: Navigation



Figure 18: Misc.



Figure 19: Misc.



Figure 20: Misc.

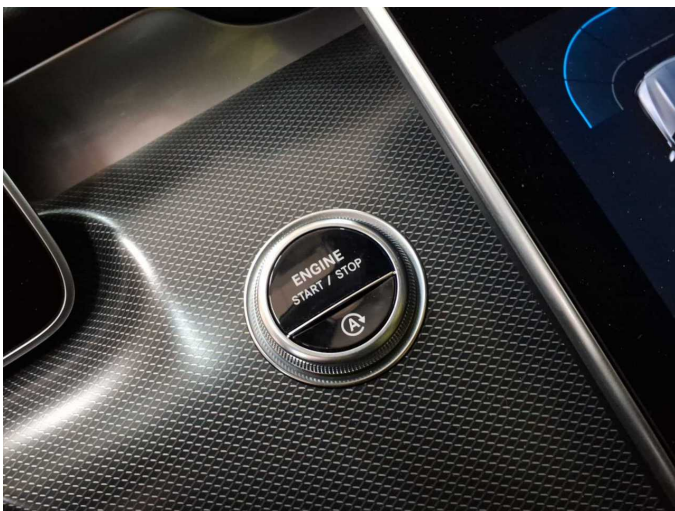


Figure 21: Misc.



Figure 22: Misc.

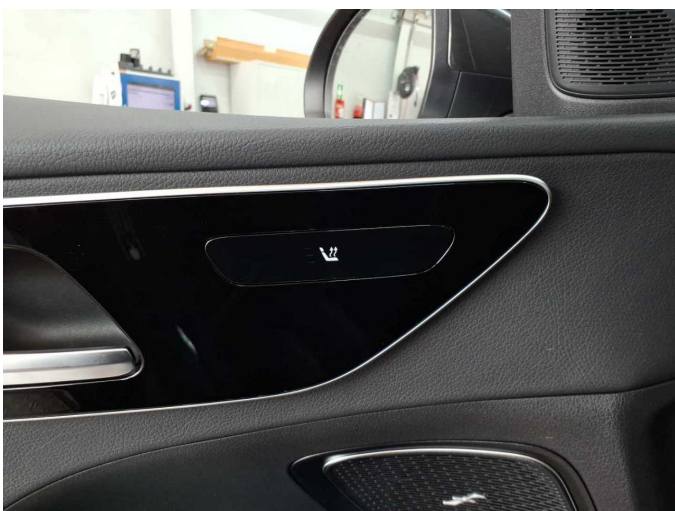


Figure 23: Misc.

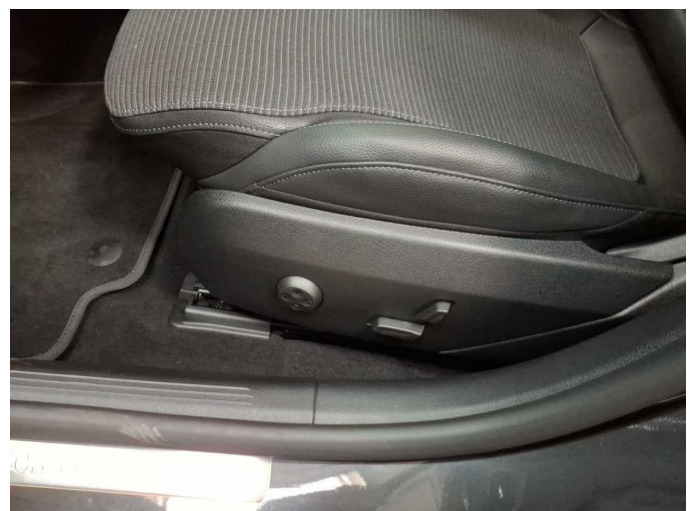


Figure 24: Misc.



Figure 25: Misc.



Figure 26: Misc.

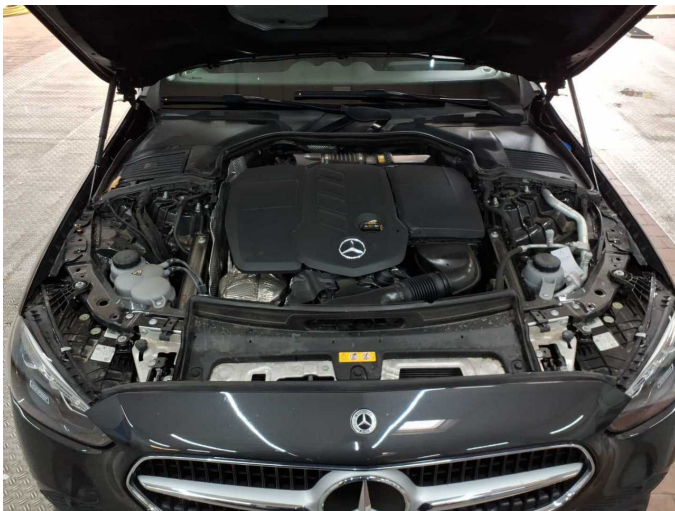


Figure 27: Misc.

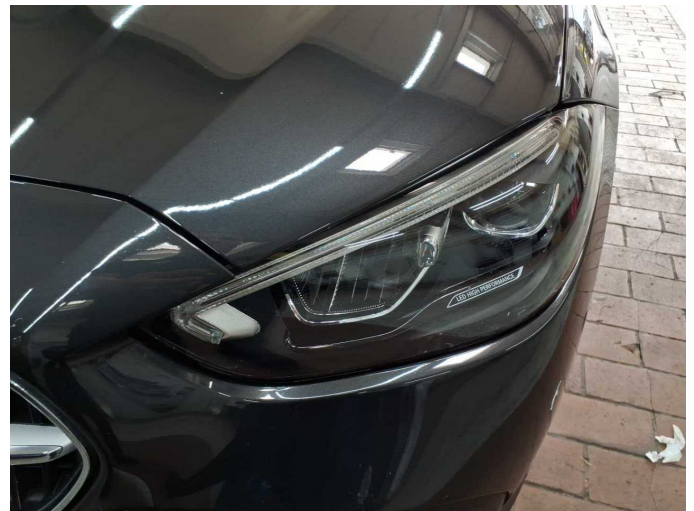


Figure 28: Misc.

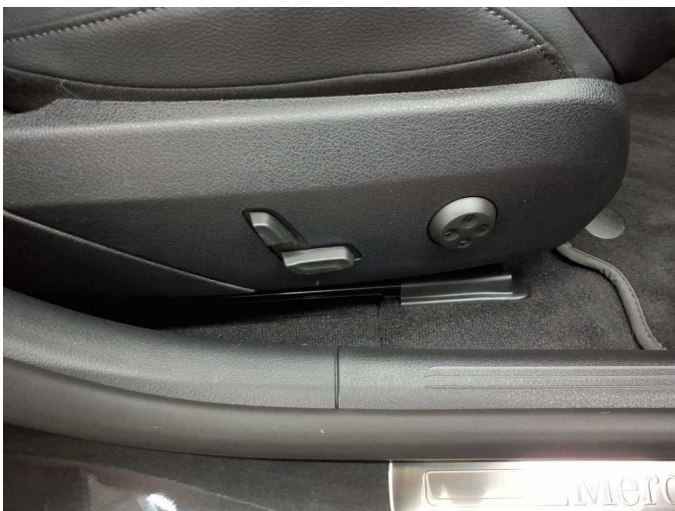


Figure 29: Misc.



Figure 30: Misc.



Figure 31: Misc.



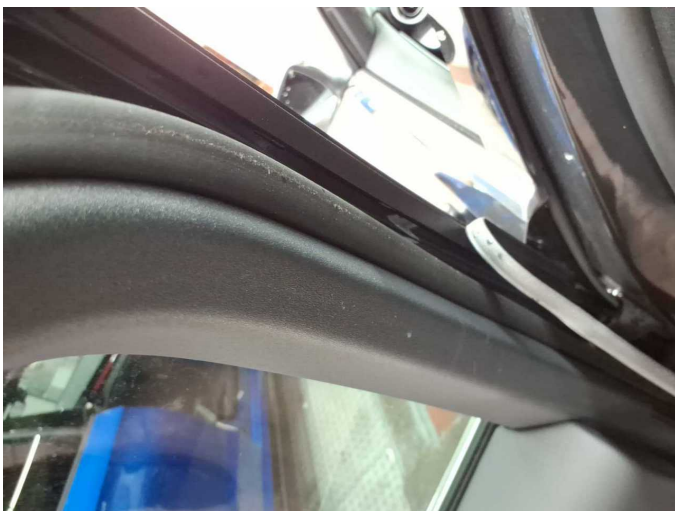
Figure 32: Misc.



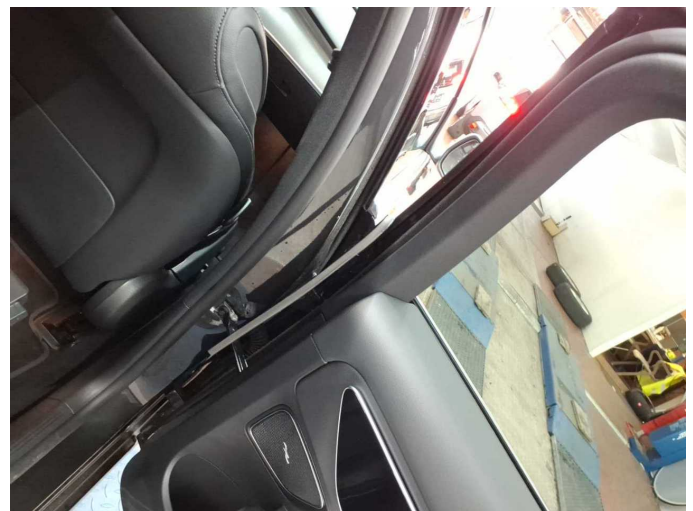
Figure 33: Misc.



Damage 1: Door - rear left side: Door (Türdichtung) - Broken / torn - Replace



Damage 1: Door - rear left side: Door (Türdichtung) - Broken / torn - Replace



Damage 2: Door - rear right side: Door (Türdichtung) - Broken / torn - Replace



Damage 2: Door - rear right side: Door (Türdichtung) - Broken / torn - Replace



Damage 3: Door - front left side: Door - Scratch(es) - Smart repair



Damage 3: Door - front left side: Door - Scratch(es) - Smart repair