

Expertise

Protocol number: 46128470
Order No. / Reference: 26529623
Inspection date: 17 Jun 2026

Manufacturer: Mazda

Model: CX-60 2,5l e-SKYACTIV AWD PHEV Aut. HOMURA

VIN: JMZKH0HB101117956



Vehicle details

Manufacturer / Type / Model / Equipment

Mazda CX-60 2,5l e-SKYACTIV AWD PHEV Aut. HOMURA

Vehicle Identification number	JMZKH0HB101117956
Mileage (Read)	53,890 km
First registration	12 Apr 2023
Number of holders	1
Next periodical technical inspection	04/2026 (Report not on hand)

Power / Engine displacement	141 kw / 2,488 ccm
Fuel type / Cylinder	Hybr.B/E ext.aufll / 4
Gearbox / Number of gears	Automatic / 8
Type of drive	All-wheel drive
Type of vehicle	SUV

Colour / colour code	Jet Black
Doors / Seats	5 / 5
Upholstery type	Leather
Colour of upholstery	Black

Re-import	no
Vehicle with smoke odor	no
readiness to drive	Roadworthy



Vehicle details

Maintenance booklet / proof	digital proof / complete	Next maintenance in	9,000 km
Last service on / at	11/2025 at 43,993 km		
Key is / should be	2 / 2	FZG documents	ZB#2 (B) was available (copy), ZB#1 (S) was not available.
		Letter No.	GR195531
Previous damage / Accident	None detectable	Repainting	Detectable
Inspection conditions	sufficient	Lifting equipment / pit	yes
Test drive	Not performed	Engine function test	Performed
readiness to drive	Roadworthy		
Manufacturer key number/ type code number	7118 / AIL 00016		
Emission standard	EURO6;WLTP;AP;PI/CI; M, N1 I	fine dust sticker	
Permitted total weight	2,667 kg	Empty weight	

Tyres

Mounted tyres

#	Tyre size	Type of tyre	Manufacturer	Tread depth
1)	235/50 R20 104V	Winter tyres on Light alloy	Pirelli	5mm / 5mm
2)	235/50 R20 104V	Winter tyres on Light alloy	Pirelli	5mm / 5mm

Additional tyres

#	Tyre size	Type of tyre	Manufacturer	Tread depth
1)	235/50 R20 100W	Summer tyres on Light alloy	Bridgestone	6mm / 6mm
2)	235/50 R20 100W	Summer tyres on Light alloy	Bridgestone	7mm / 7mm

Replacement

Typ	Tyre size	Type of tyre	Manufacturer	Tread depth
Tirefit		Expiration date 07/2028		

Legend: Tread depth information for the left tire is listed first, for the right tire it is listed second on the axle in the direction of travel.

TÜV SÜD Auto Partner GmbH
Wiesenring 2
04159 Leipzig

Inspection location
Hartmann Fleet Professionals GmbH
Industriestraße 11
36272 Niederaula



Equipment



Standard equipment

- Adaptive Cruise Control with Traffic Jam Assist (MRCC) (including Intelligent Speed Assist (ISA))
- Airbag: Knee airbag for driver
- Airbag: Head/shoulder airbags, front and rear
- Alarm system with interior monitoring
- Ambient lighting on the headliner
- Rear Cross Traffic Alert (RCTA)
- Dual exhaust system
- Electrically adjustable and heated exterior mirrors (electrically folding - painted in body color - with integrated LED side indicators)
- Hill Start Assist (HLA)
- Coming/leaving home light function
- Roof spoiler
- Third brake light
- E-Call emergency call system
- Electric parking brake with auto-hold function
- Driving mode selection Mi-Drive (Normal, Sport, Off-Road (AWD only), EV (PHEV only), Towing (trailer towing program in conjunction with original trailer hitch, AWD only))
- Transmission: 8-speed automatic
- Head-up Display (Advanced Head-up Display, projection in windshield, color, for displaying driving-related information)
- i-stop stop/start system
- iSize child seat mounting bracket (rear outer)
- Rear headrests (3)
- Front headrests are height-adjustable
- Charging cable: Type 2 charging cable (13 A) for household socket (Mode 2) (length 8m)
- LED taillights
- LED daytime running lights
- Leather gear knob
- Steering wheel: Steering wheel heating
- light sensor
- Mazda Connect (30.48 cm color display (12 inch) and Multi-Commander - connectivity services via the MyMazda app - Mazda audio system, radio, 2 USB-C ports - digital radio tuner (DAB+) - wireless Android Auto, wireless Apple CarPlay (touchscreen operation when the vehicle is stationary) - 8 speakers - hands-free system with voice control and Bluetooth with audio streaming - Mazda SD navigation system - steering wheel controls for audio source, volume, cruise control, hands-free system)
- Package: Premium Comfort (Electric seat adjustment driver & front passenger, 10-way - Electric lumbar support front - Electric steering wheel adjustment - Seat climate control front - Seat heating rear outer, Driver Personalization System: - Attention Assist (DM) - Memory function for personalized settings of driver's seat, head-up display, exterior mirrors, climate control, steering wheel, sound system and assistance systems - Automatic seat adjustment based on eye level and body size - Entry/Exit Assist: Returns driver's seat and steering wheel to their original positions)
- Airbag: Center airbag front
- Airbag: Front airbags (passenger seat occupancy detection)
- Airbag: Front and rear outer side airbags
- All-wheel drive (AWD)
- Anti-lock braking system (with electronic brake force distribution)
- Exit Warning (BSM - Exit Warning) (for vehicles approaching from behind)
- Exterior mirror caps in black
- Hill Descent Control (HDC)
- City Emergency Brake Assist SCBS/SBS (Smart City Brake Support) (with pedestrian/cyclist detection and intersection detection)
- Dynamic Stability Control (DSC) with Traction Control System (TCS)
- De-icer function for windshield wipers
- Vehicle stability program: Kinematic Posture Control (KPC)
- High Beam Assist HBC
- Cruise control system with speed limiter
- Illuminated glove compartment
- Heated rear window
- rear window wiper
- i-Active Display (12 inches, in the central round instrument cluster)
- Automatic climate control (two zones, separately controllable)
- Cargo securing including luggage compartment partition net
- Charging cable: Type 2 charging cable (20 A) for charging stations (Mode 3) (length 4 m)
- leather steering wheel
- 20" alloy wheels, black (tires 235/50 R20)
- Steering wheel: Paddle shifters on the steering wheel
- Login: Keyless access system (Smart Keyless Entry)
- Rear center armrest (including 2 cup holders)
- MyMazda App (Find vehicle - Charging status information - Start/stop charging - Send navigation destination to vehicle - Door locking - Remote control of automatic climate control)
- Driver Alertness Detection (DAA)
- Otto particulate filter
- Package: Comfort & Leather Interior (Electric seat adjustment for driver & front passenger, 10-way - Lumbar support for driver & front passenger (electrically adjustable) - Black leather interior, leather seat centers and side bolsters - Heated rear outer seats - Ventilated front seats - Driver Personalization System: - Attention Assist (DM) - Memory function for personalized settings of driver's seat, head-up display, exterior mirrors, climate control, steering wheel, sound system and assistance systems)
- Rear parking sensors (acoustic)
- Front parking sensors
- Upholstery: Leather interior (seat center panel and side bolsters in leather)
- Radio accessories: USB port (2) (two additional USB ports (rear of center console))
- Wheels: Mobility kit (with compressor and tire sealant)
- Rear seat backrests split folding (40:20:40)



- PTC heating system for the interior
- Rain sensor
- Tire pressure monitoring system (TPMS)
- Rear view camera
- Electric power steering
- Seats: Driver's seat tilt adjustment
- Front seat heating
- Lane Keeping Assist (ELK) with steering support
- Rear bumper in body color (with black center section)
- Traffic Sign Recognition (TSR)
- Full LED headlights (with automatic headlight range control and cleaning system)

Extra equipment

- Roof: Panoramic glass sunroof
- Package: Convenience & Sound (Electric tailgate - Darkened rear and side windows - 360° monitor with see-through view - 230V/150W socket (rear of center console) - 230V/1500W socket (trunk) - Bose BassMatch Centerpoint 2 sound system with 12 speakers - Qi: Inductive charging (for compatible smartphones) - Lighting in door sills, center console, door storage compartment)

Retrofitted equipment

- cup holder
- Luxury textile floor mats

- Seat belts: 3-point automatic seat belts for all seats (front seats with height adjustment)
- Sound Simulator (AVAS) (for EV operation)
- Lane Change Assist Plus (BSM)
- Lower bumper in body color (including wheel arch trim, side skirts)
- Immobiliser
- Central locking with remote control (and automatic door locking)

- Paint finish: Metallic
- Package: Driver Assistance (Marix LED Light System (ALH) - Front Monitoring (FCTA) - Rear Cross Traffic Alert (RCTB), (SCBS R) - Adaptive Cruise Control with Stop&Go Function and Speed Limit Assist (MRCC), (CTS), (i-AAC) - Auto-dimming exterior mirror, driver's side - Frameless and auto-dimming interior mirror)

- trunk tray

Brief expert findings

Documents submitted	At the time of the inspection, the vehicle registration certificate Part 2 (title) was available, but the vehicle registration certificate Part 1 (document) was not. (Copy)
VIN comparison	The vehicle identification number (VIN) was read from the vehicle and its conformity with the submitted documents was confirmed by the undersigned during the inspection.
Inspection	The inspection conditions were sufficient for the assessment of the vehicle. Lifting equipment and/or a pit were available for examining the vehicle.
Test drive	No test drive/shunting maneuver was carried out during the inspection of the vehicle.
Engine function test	An engine test run was performed.
readiness to drive	The vehicle was roadworthy at the time of inspection.

Value reducing factors

No.	Component group	Description
1	Side panel - rear right side	Side panel - dent(s) - Smooth repair work
2	Side panel - rear right side	Sill - dent(s) - Smooth repair work
3	Door - rear right side	Door - dent(s) - Smooth repair work
4	Bonnet	Insulation lining - Damage caused by marten / rodent - Replace
5	Door - rear right side	Door - Scratch(es) - Smart repair
6	Side panel - rear right side	Sill - Scratch(es) - Smart repair
7	Misc.	Main inspection - Due - Perform
8	Airbag systems	Airbag system (Störung, Mehrkosten möglich) - on - Perform diagnosis



Missing parts

Description

Equipment - charging cable (Typ 2-Ladekabel für Haushaltssteckdose (Mode 2))

Repainting

No. Repainting

1 Door - front right side

Paint coat thickness measurement

Door - front right side 162 µm |

Order/Scope of Order

An order was placed to prepare a sales report for the described vehicle. This report includes the following:

- Description of key vehicle information
- Documentation of equipment features
(*Delivery by third-party service providers*)
- Documentation of damage, defects, missing parts
- Documentation of prior damage, unrepaired prior damage, repainting
- A brief visual or functional inspection of the equipment details, if possible.
(*Functional testing of driver assistance systems is not included in the scope of services!*)
- a photographic documentation of the vehicle

Basis for the order

This product is based on the guidelines for vehicle returns and valuations published by Alphabet Fleet GmbH. The expert makes the specific findings in each individual case objectively, within the framework of the prescribed standards, based on their own expertise.

The vehicle inspection takes place in a fully assembled, unassembled state.

Damage or defects that can only be detected during disassembly/diagnostic work or through further investigation remain within the realm of prognostic risk. An increased risk exists due to concealed defects caused by fraudulent misrepresentation and which were not identifiable by the expert.

Damage or defects resulting from normal use or wear and tear of the vehicle will be accepted in accordance with the applicable standard.

There was no explicit identification or monetary consideration of the expected features within the product.

Features which, in their nature and extent, slightly exceed normal use but do not constitute unacceptable damage, will be documented and indicated as signs of wear, if applicable.

Damage or defects that, according to the applicable standard, can no longer be attributed to normal use or wear and tear are listed under "Value Reducing Factors" in the product description.

Depending on the product specification, a monetary ID can be provided. If this takes place, the costs can be 100% d or pro rata depending on the vehicle's age and mileage.

Previous damages

No apparent prior damage that had been repaired could be found on the vehicle.

Comments

- Für den montierten Radsatz wurde kein Nachweis erbracht.
- Winterradsatz ist kein Bestandteil des Auslieferungsumfanges.



Figure 1: Diagonal front (left)



Figure 2: Diagonal front (right)



Figure 3: Diagonal rear (left)



Figure 4: Diagonal rear (right)

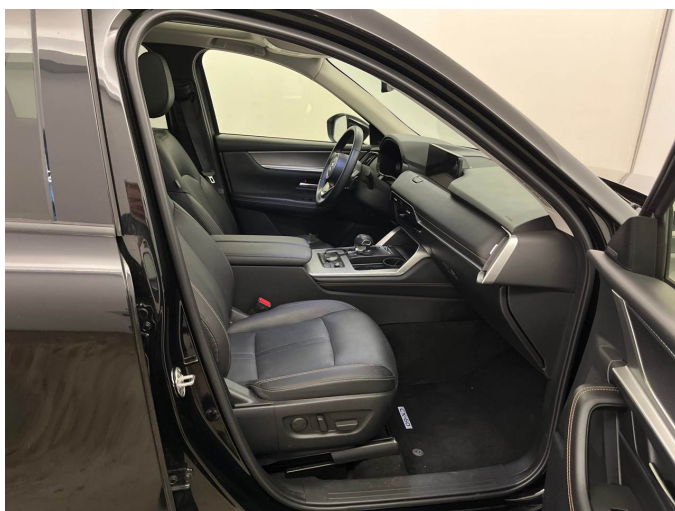


Figure 5: Interior - front

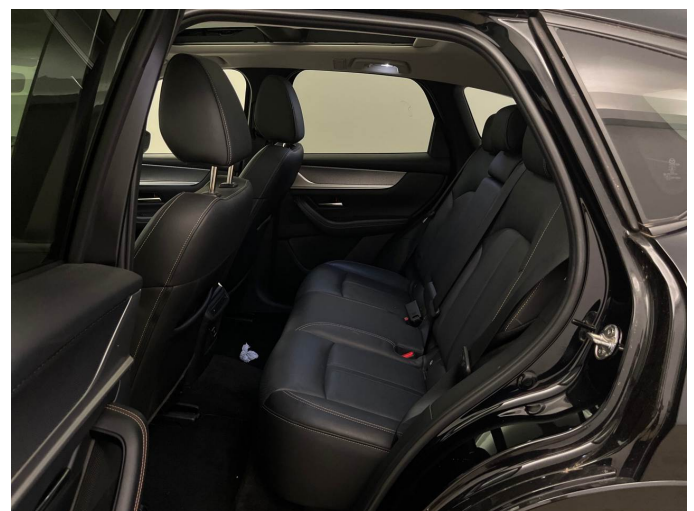


Figure 6: Interior - rear



Figure 7: Instrument cluster



Figure 8: Instrument panel



Figure 9: Interior 360° view



Figure 10: Cargo area

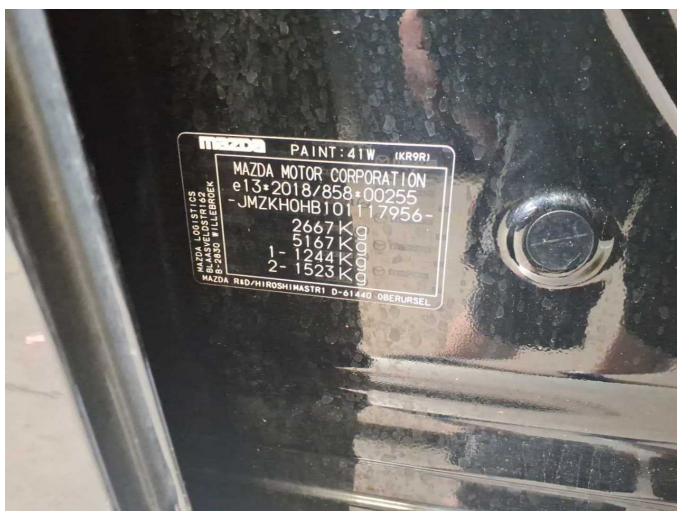


Figure 11: VIN



Figure 12: Mounted tyres



Figure 13: Documents



Figure 14: Additional tyres

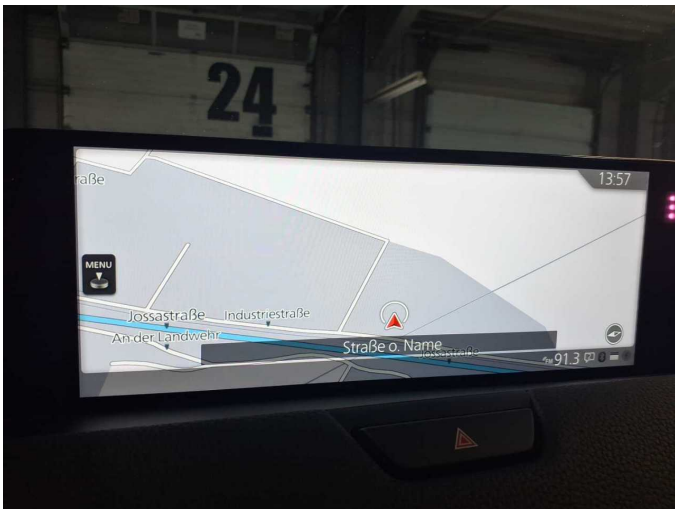


Figure 15: Navigation



Figure 16: Misc.



Figure 17: Misc.

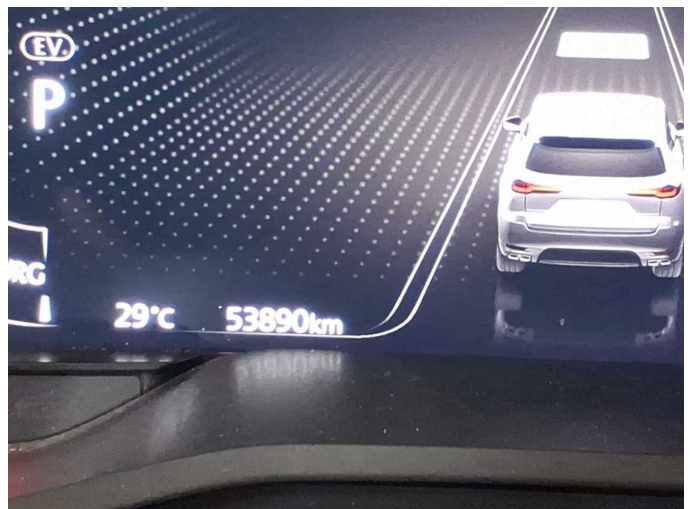


Figure 18: Misc.

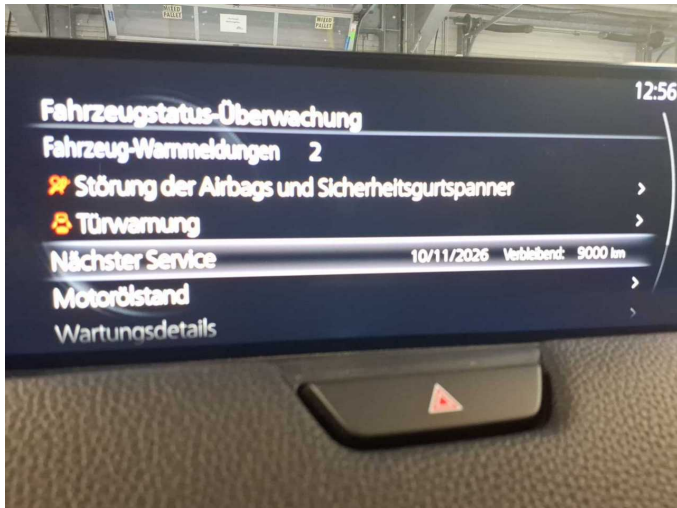


Figure 19: Misc.

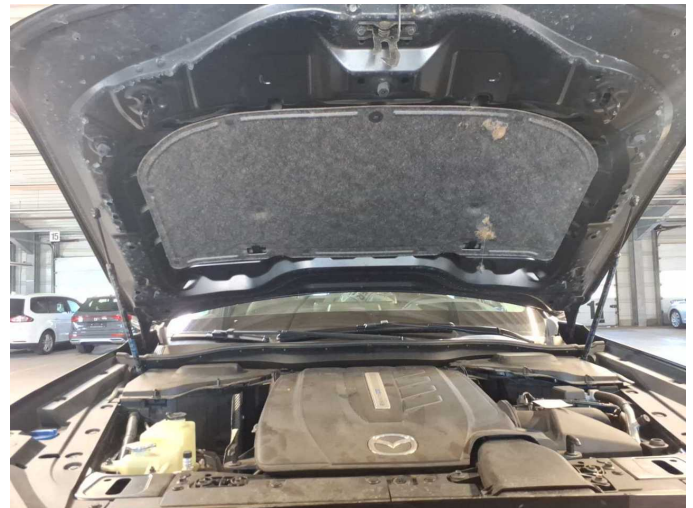


Figure 20: Misc.



Figure 21: Misc.



Figure 22: Misc.



Figure 23: Misc.



Figure 24: Misc.



Figure 25: Misc.



Figure 26: Misc.

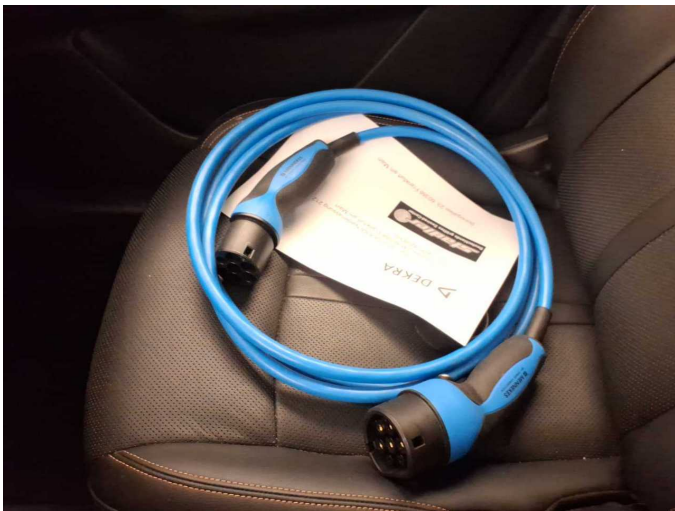
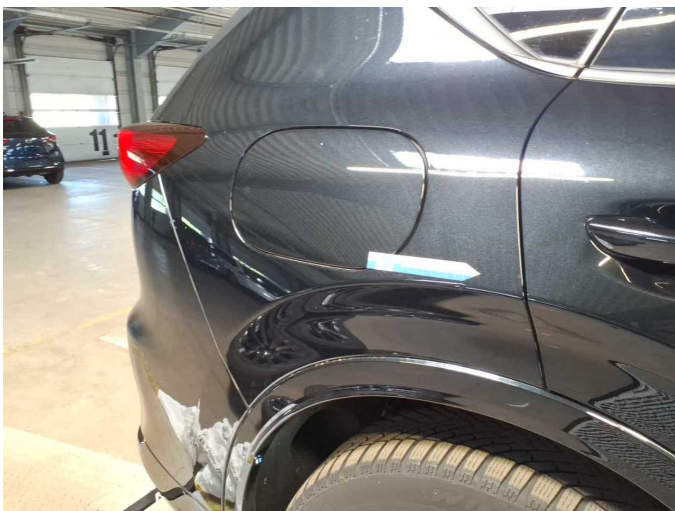


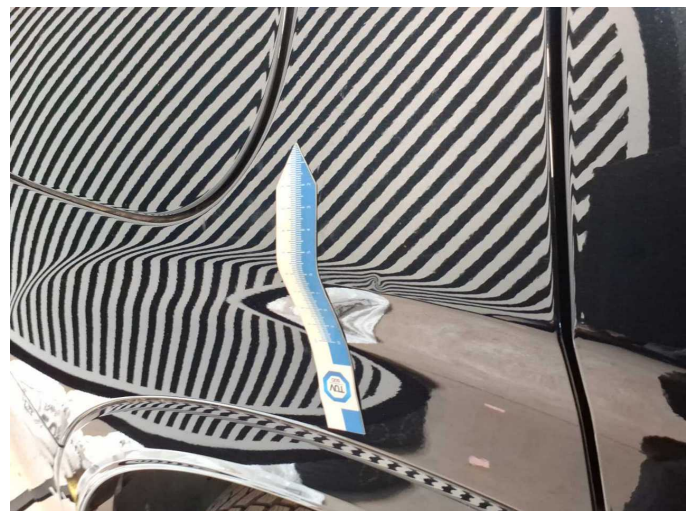
Figure 27: Misc.



Figure 28: Misc.



Damage 1: Side panel - rear right side: Side panel - dent(s) - Smooth repair work



Damage 1: Side panel - rear right side: Side panel - dent(s) - Smooth repair work



Damage 2: Side panel - rear right side: Sill - dent(s) - Smooth repair work



Damage 2: Side panel - rear right side: Sill - dent(s) - Smooth repair work



Damage 3: Door - rear right side: Door - dent(s) - Smooth repair work



Damage 3: Door - rear right side: Door - dent(s) - Smooth repair work



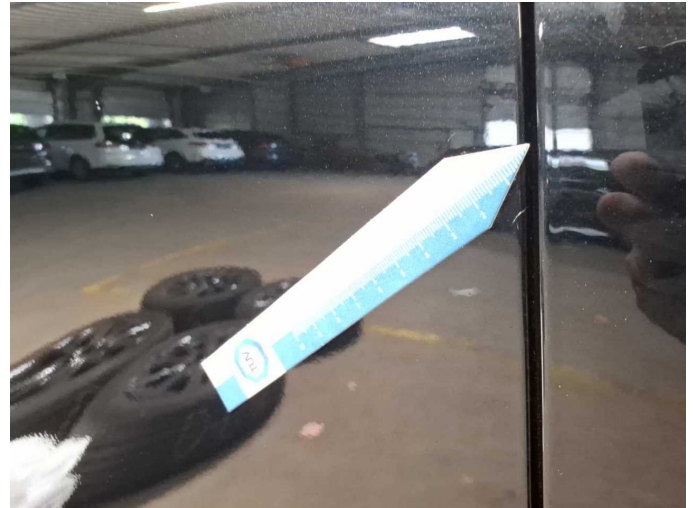
Damage 3: Door - rear right side: Door - dent(s) - Smooth repair work



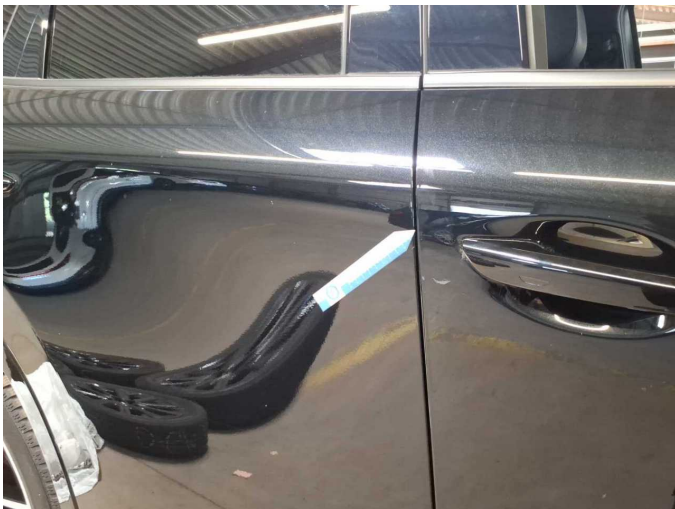
Damage 3: Door - rear right side: Door - dent(s) - Smooth repair work



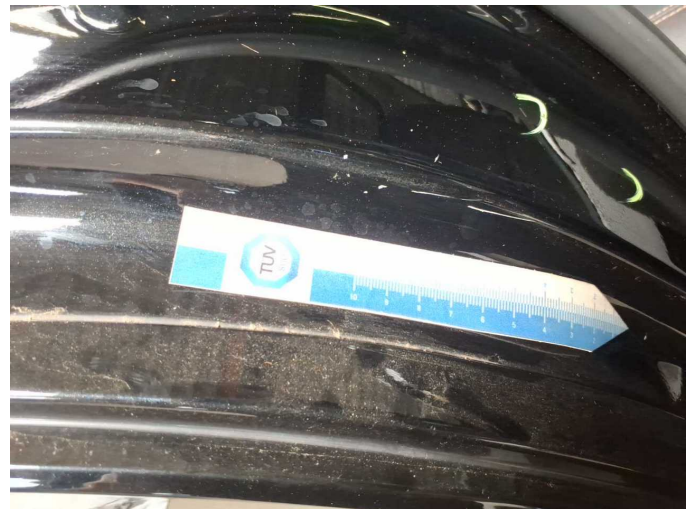
Damage 4: Bonnet: Insulation lining - Damage caused by marten / rodent
- Replace



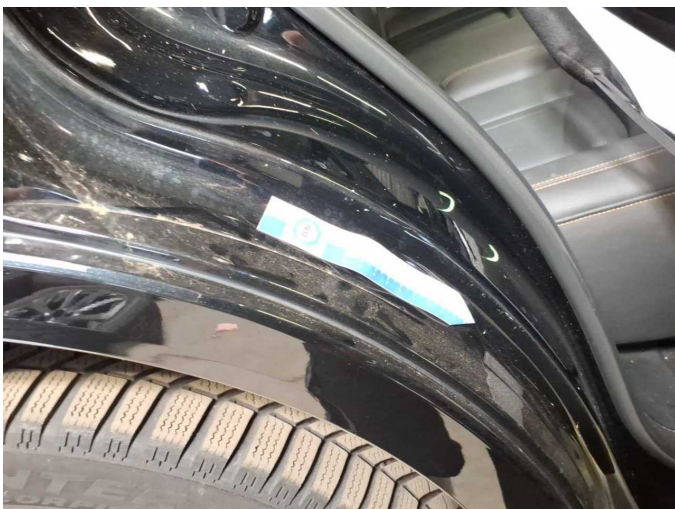
Damage 5: Door - rear right side: Door - Scratch(es) - Smart repair



Damage 5: Door - rear right side: Door - Scratch(es) - Smart repair



Damage 6: Side panel - rear right side: Sill - Scratch(es) - Smart repair



Damage 6: Side panel - rear right side: Sill - Scratch(es) - Smart repair



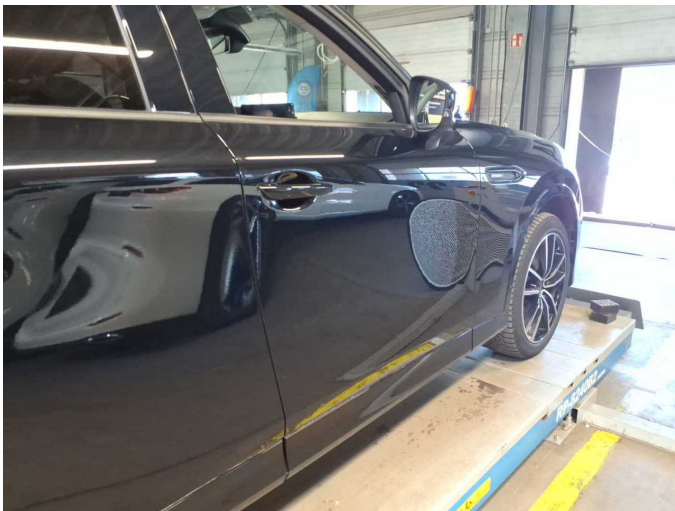
Damage 8: Airbag systems: Airbag system (Störung, Mehrkosten möglich) - on - Perform diagnosis



Repainting 1: Door - front right side



Repainting 1: Door - front right side



Repainting 1: Door - front right side



Repainting 1: Door - front right side



Door - front right side: 162 µm



Wartungshistorie

(gemäß Auftraggeber Informationen)

Fahrgestellnummer: JMZKH0HB101117956

Hersteller / Modell: MAZDA MAZDA CX-60 AWD PHEV Aut. HOMURA

Datum	KM-Stand	Beschreibung
13.11.2025	43.993	Bremsflüssigkeit; Motoröl b. Wartung; Ölfilter ern; Regelwartungsdienst; Systemtest/Eigendiagnose; Wartung Sonstiges
19.07.2024	20.993	Motoröl b. Wartung; Ölfilter ern; Regelwartungsdienst; Wartung Sonstiges