

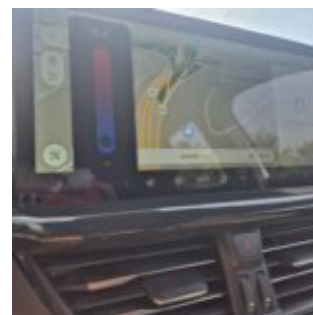
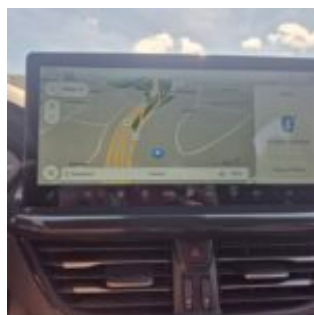
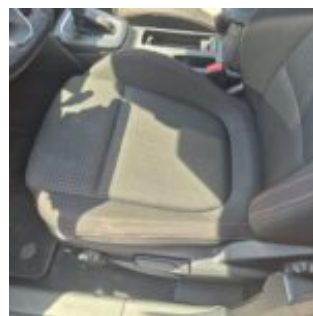
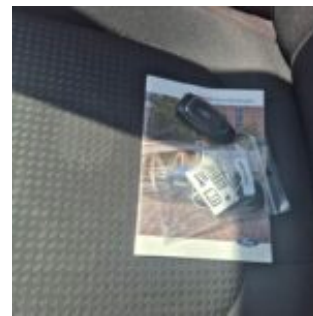
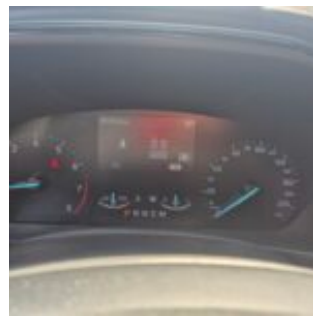
2-DWH-799

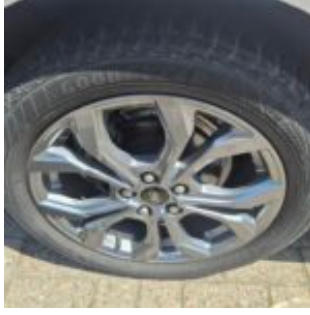
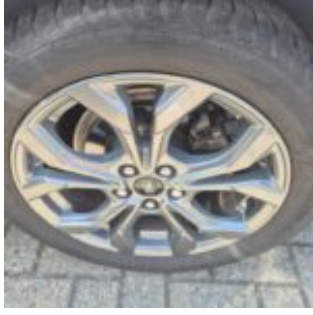
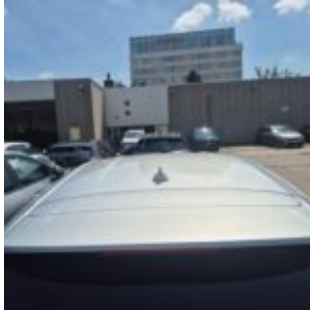
2-DWH-799 · ST-line 125pk 92kw mHEV A7 5d · 22 June 2026 · Zaventem (BE)

Specifications

License Plate Number	2-DWH-799	Fuel Type	Hybrid Gasoline
Manufacturer	FORD	VIN	WF0NXXGCHNPY15559
Model	Focus	Cylinder Capacity	999 ^{cm³}
Model Versions	ST-line 125pk 92kw mHEV A7 5d	Transmission Type	Automatisch geschakelde Transmissie
Body Type	5 door hatchback	First Admission	13-07-2023
Color	Silver	Odometer	96.192 ^{Km}
Paint Type	Metallic	Numer Of Keys	2
Production Year	2023	Interior	Black
KW	92	Number Headrests	5

Images





Accessories

ABS

Airbags

Alloy wheels

Audio System

Automatic air conditioning

Bluetooth car kit

Central door locking

Centre armrest

Cruise control

Electric rear windows

Electric windows front

Electrically adjustable exterior mirrors

Front & rear parking sensors

Leather steering wheel

Navigation system

Roller cover / parcel shelf

Seat heating

Steering wheel multifunction

Steeringwheel - Heated

Windscreen - Heated

Condition

Condition exterior Adequate

Condition interior Adequate

Last Maintenance Unknown

Previous Repairs

Unknown

Tire Specifications

Tire	Profile	Brand	Width	Aspect Ratio	Radial	Type
Front Left	5 ^{mm}	Hankook	215 ^{mm}	50 ^{mm}	17 ^{inch}	All Season
Rear Left	6 ^{mm}	Goodyear	215 ^{mm}	50 ^{mm}	17 ^{inch}	All Season
Front Right	5 ^{mm}	Hankook	215 ^{mm}	50 ^{mm}	17 ^{inch}	All Season
Rear Right	6 ^{mm}	Goodyear	215 ^{mm}	50 ^{mm}	17 ^{inch}	All Season
Spare Tire Type		None				

Damages



Damage Part

Alloy - Left Rear

Damage Type

Damaged

Repair Type

Rim repair

Acceptable

No



Damage Part

Fender - Rear Left

Damage Type

small dents / small scratches

Repair Type

Panelbeating & Spray

Acceptable

No



Damage Part

Alloy - Left Front

Damage Type

Damaged

Repair Type

Rim repair

Acceptable

No



Damage Part

Hood

Damage Type

Stonechipping

Repair Type

Acceptable

Acceptable

Yes



Damage Part

Bumper - Front

Damage Type

Scratch(es)

Repair Type

Spray

Acceptable

No



Damage Part

Alloy - Right Front

Damage Type

Damaged

Repair Type

Rim repair

Acceptable

No



Damage Part

Frontdoor - Right

Damage Type

Small scratch(es)

Repair Type

Touch-up / Polish

Acceptable

No



Damage Part

Alloy - Right Rear

Damage Type

Damaged

Repair Type

Acceptable

Acceptable

Yes



Damage Part

Bumper - Rear

Damage Type

Scratch(es)

Repair Type

Spray

Acceptable

No





Damage Part

Interior

Damage Type

Stains & dirt

Repair Type

Cleaning

Acceptable

No