

Expertise

Protocol number: 42700839
Order number / reference: 25439926
Inspection date: 24 Nov 2025

Manufacturer: Volkswagen

Model: Caravelle T6.1 DSG Kurz Comfortline

VIN: WV2ZZZ7HZNH094251



Vehicle details

Manufacturer / Type / Model / Equipment

Volkswagen Caravelle T6.1 DSG Kurz Comfortline

Vehicle Identification number	WV2ZZZ7HZNH094251
Mileage (Read)	134,771 km
First registration	27 Dec 2022
Number of holders	1
Next periodical technical inspection	01/2026 (Report on hand)

Power / Engine displacement	110 kw / 1,968 ccm
------------------------------------	--------------------

Fuel type / Cylinder	Diesel / 4
-----------------------------	------------

Gearbox / Number of gears	Automatic / 7
----------------------------------	---------------

Type of drive	Front drive
----------------------	-------------

Type of vehicle	Van
------------------------	-----

Colour / colour code	Reflexsilber metallic (A7W)
-----------------------------	--------------------------------

Doors / Seats	4 / 8
----------------------	-------

Upholstery type	Cloth
------------------------	-------

Colour of upholstery	Black-Anthracite
-----------------------------	------------------

Vehicle with smoke odor	no
--------------------------------	----



Vehicle details

Maintenance booklet / proof	digital proof / complete	Next maintenance in	18,100 km
Last maintenance on / at	09/2025 at 130,632 km		
Key is / should be	2 / 2	FZG documents	ZB#2 (B) was available (copy), ZB#1 (S) was not available
		Letter No.	GJ276057
Previous damage / Accident	Detectable	Repainting	None detectable
Inspection conditions	sufficient	Lifting equipment / pit	yes
Test drive	Not performed	Engine function test	Performed
Manufacturer key number/ type code number	0603 / BTX 45387		
Emission standard	EURO6;WLTP;AP;PI/CI; M, N1 I	Fine dust sticker	
Permitted total weight	3,080 kg	Empty weight	

Tyres

Mounted tyres

#	Tyre size	Type of tyre	Manufacturer	Tread depth
1)	215/65 R16 109R	Winter tyres on Steel rim with wheel cover	Continental	5mm / 5mm
2)	215/65 R16 109R	Winter tyres on Steel rim with wheel cover	Continental	3mm / 4mm

Additional tyres

#	Tyre size	Type of tyre	Manufacturer	Tread depth
1)	215/65 R16 106T	Summer tyres (Without wheel rim)	Bridgestone	6mm / 6mm
2)	215/65 R16 106T	Summer tyres (Without wheel rim)	Bridgestone	6mm / 6mm

Legend: Tread depth for tires on the left is in the first place, for tires on the right is in the second place on the axle in the direction of travel



Equipment

Standard equipment

- Storage compartments and boxes (glove compartment with lockable flap)
- Airbag: Side and curtain airbag including center airbag
- Exterior mirrors, left and right convex
- Reinforced battery (70 Ah/ 420 A)
- Indicator lights, side
- Brake light, third
- tachometer
- Chassis: 16" chassis with 16" brake system
- Window in passenger/cargo area: Rear left window, fixed
- Electric windows, front
- Total weight: Gross vehicle weight 3080 kg
- Rear window with heat-insulating glazing, heated, and rear window washer system
- Tailgate closure with unlocking function from inside
- Child safety lock, electrically operated
- Child seat anchorage ISOFIX and Top Tether in the 2nd row of seats
- Headrests: Whiplash headrests, height-adjustable at the front, height- and tilt-adjustable at the rear (7)
- Multifunction display "Plus" with fatigue detection (multifunction display "Plus" with black and white display)
- Particle filter: Soot particle filter for diesel (including SCR and AdBlue tank)
- Radio "Composition Audio" with TFT display (monochrome) (USB interface, Bluetooth interface)
- Wheels/Tires: Tire pressure monitoring indicator
- Wheels/Tires: Steel wheels 6.5 J x 16 in 20-hole design
- Wheels: Tire Mobility Set (12-volt compressor and tire sealant)
- Sliding door in the passenger/cargo compartment: sliding door on the right
- Crosswind Assist
- Seat belts: Three-point automatic seat belts (height-adjustable on the outer seats in the driver's cab)
- Seats 2nd row: 2-seater bench on the left, folding backrest with armrest on the aisle side (in the 2nd row)
- Seat configuration - 3. Seat settings: Height adjustment for left and right single seats in the cab
- Seat configuration - 5. Armrests: Armrests for both seats in the cab
- Start-stop system (with brake energy recovery)
- Sockets: 12 volt socket(s)
- Bumpers in vehicle color (bumpers in vehicle color for standard paint finishes or according to color description for special paint finishes)
- Step inside, in the driver's cab and passenger compartment
- Lashing eyes for securing loads
- Green thermal insulation glazing
- Approval with up to 9 seats
- Airbag for driver and front passenger (with passenger airbag deactivation - belt tensioners for the outer seats)
- Exterior mirrors electrically adjustable and heated
- Exterior mirror housings and door handles in body color
- Hill start assist
- Floor coverings: Carpeted flooring in the driver's cab
- Three-phase generator 180 A
- Electronic Stabilization Program (including ABS, ASR, EDS, Hill Start Assist, Brake Assist)
- Window: Side window in the passenger/cargo area, rear right, permanently installed
- Transmission: DSG (dual clutch transmission), 7-speed automatic
- Tailgate with window cutout
- Interior lighting with LED technology in the cargo/passenger compartment
- Air conditioning with manual control in the driver's cab, with additional heating in the cargo/passenger compartment
- Fuel-powered auxiliary heater
- Multi-collision brake
- Non-smoking version (12V socket and cup holder in the dashboard)
- Upholstery: Seat covers in fabric, design "Circuit"
- Radio accessories: Digital radio reception DAB+
- Wheels/Tires: 215/65 R 16 C 106/104 T, rolling resistance optimized
- Wheel/Tire accessories: Wheel covers for 16" wheels
- Sliding door in the passenger/cargo area: Without sliding door on the left, in the cargo/passenger area (closed side wall)
- Key for locking system: 2 radio folding keys
- Electromechanical power steering (speed-dependent control, steering column height and length adjustable)
- Dimmable interior safety mirror
- 3rd row seats: 3-seater bench seat, foldable and wrap-around (not usable in the 4th row with modular seat attachment system)
- Seat configuration - 4. Lumbar support: LW support, left and right manually adjustable for individuals.
- Sun blinds on the side windows in the passenger compartment
- Power sockets: 2 12-volt sockets in the dashboard
- Daytime running lights (continuously switched on while driving)
- Telephone: Mobile phone interface
- Underride guard
- First aid kit, warning triangle and high-visibility vest
- Electronic immobilizer
- Central locking with radio remote control and interior operation



Extra equipment

- "Discover Media" radio navigation system including "Streaming & Internet" (voice control - 2 USB ports (Type C) in the dashboard - "Discover Media" radio navigation system with 20.3 cm (8-inch) touch display including "Streaming and Internet" - Navigation function/preparation - 6 speakers: 2 tweeters, 2 woofers, 2 full-range speakers - Wired & Wireless App Connect)
- Driver assistance systems: Rearview camera "Rear View" ((static lines))
- Exterior mirrors, electrically adjustable, heated and folding (including folding function via vehicle key)
- Heated windscreen washer nozzles at the front and washer fluid level indicator
- LED headlights with LED daytime running lights (headlight range adjustment, automatically controlled)
- ParkPilot in the front and rear areas
- Rear wing doors with windows, heated (rear wing doors with window cutouts - rear wing door closing with unlocking function from inside - taillights in standard design)
- Seating configuration - 1. Seat packages: 8-seater package = 2-3-3 (2-seater bench seat on the left and single seat with easy-entry function on the right, in the 2nd row - 3-seater bench seat, foldable and rollable, in the 3rd row (not usable in the 4th row with modular seat mounting system) - No seats in the 4th row)
- Storage boxes and bins, waste containers (in the door pockets in the driver's cab)
- Wheels/Tires: Spare wheel (steel rim) with driving tires
- ACC "follow to stop" automatic distance control up to 210 km/h, with speed limiter (Front Assist surroundings monitoring system with City Emergency Braking function)
- Air conditioning: 3-zone "Air Care Climatronic" with additional control panel in the passenger compartment
- Chassis: Reinforced suspension and damping
- Floor coverings, rubber flooring in the driver's cab and passenger compartment (including loading sill protection, rear)
- Grab handle for entry on the A-pillar, on the driver's and passenger's side
- Multifunction display: Digital cockpit and fatigue detection
- Package: Light and Sight Package Plus (automatic dimming interior safety mirror - "Light Assist" high beam control - daytime running lights with automatic headlight control, "leaving home" function and manual "coming home" function - windshield wiper interval control with rain sensor for the windshield wipers - fog lights including cornering lights)
- Paint finish: metallic
- Seat heating for seats in the driver's cab, left and right, separately adjustable
- Steering wheel: multifunction leather steering wheel (3 spokes)
- Traffic sign recognition
- Wheels/Tires: On-board tools and jack
- Wheels/Tires: Tire pressure monitoring system (direct measuring)

Brief expert findings

Documents submitted	At the time of the inspection, the registration certificate Part 2 (letter) was available, but the registration certificate Part 1 (certificate) was not. (Copy)
VIN comparison	The vehicle identification number (VIN) was read from the vehicle and its conformity with the submitted documents was verified during the inspection by the undersigned.
Inspection	The inspection conditions were sufficient for the assessment of the vehicle. Lifting equipment and a pit were available for examining the vehicle.
Test drive	No test drive/maneuvering was carried out during the inspection of the vehicle.
Engine function test	An engine test run was performed.

Value reducing factors

No.	Component group	Description
1	Wheel / tyres	Wheel cover - rear right side - Missing - Replace
2	Wing mirror - left side	Cap - Scratch(es) - Smart repair
3	Side panel - rear right side	Side panel - dent(s) - Repair and paint
4	Door - front right side	Door - Scratch(es) - Paint
5	Door - rear right side	Door - Dent / paintcoat damage - Repair and paint
6	Front bumper	Front bumper - Scratched - Repair and paint

Wear and tear



No.	Component group	Description
1	Wheel / tyres	Wheel cover - front right side - Scratch(es) - No deduction
2	Rear bumper	Rear bumper (Ladekante) - Scratch(es) - No deduction
3	Roof	Roof - dent(s) - No deduction
4	Vehicle glazing	Windscreen - Stone chips - No deduction

The vehicle shows signs of wear commensurate with its age and use.

Missing parts

Description

Equipment - Tirefit complete

Previous damages

No.	Previous damage	Extent of damage (Net)
1	Rear, Side - left, Provided by user / customer, from 24 Sept 2024	2.154,06 €

Order/Scope of order

The order was placed to prepare a sales report for the vehicle described. This includes the following:

- Description of core relevant information about the vehicle
- Documentation of equipment features
(Delivery by third-party service providers)
- Documentation of damage, defects, missing parts
- Documentation of previous damage, unrepaired previous damage, repainting
- a brief visual or functional inspection of the equipment details if possible.
(Functional tests of driver assistance systems are not included in the scope of services!)
- a photo documentation of the vehicle

Basis for the order

This product is based on the Alphabet Fuhrpark GmbH guidelines for vehicle returns and valuations. The expert makes the explicit findings in each individual case objectively within the framework of the specified standards based on his or her own expertise.

The vehicle inspection takes place in a disassembled state.

Damage or defects that can only be detected during disassembly/diagnosis work or through advanced knowledge remain within the scope of the prognosis risk. An extended risk exists for concealed defects caused by fraudulent deception and not identifiable by the expert.

Damage or defects resulting from normal use or wear and tear of the vehicle will be accepted according to the applicable standard.

There was no explicit identification or monetary consideration of the expected features within the product.

Features which in their nature and severity slightly exceed normal use but do not constitute unacceptable damage will be documented and identified under signs of use if necessary.

Damage or defects that can no longer be attributed to normal use or wear and tear according to the underlying standard are listed in the product under value-reducing factors.

Depending on the product specification, a monetary ID can be provided. If this takes place, the costs can be 100% d or pro rata depending on the vehicle's age and mileage.

Previous damages

According to available information previous damages were repaired at the vehicle. Traces of repairs, which allow conclusions about the area of repair, were not recognizable during the inspection.



Figure 1: Diagonal front (left)



Figure 2: Diagonal front (right)



Figure 3: Diagonal rear (left)



Figure 4: Diagonal rear (right)



Figure 5: Interior - front



Figure 6: Interior - rear



Figure 7: Instrument cluster



Figure 8: Instrument panel



Figure 9: Interior 360° view



Figure 10: Cargo area

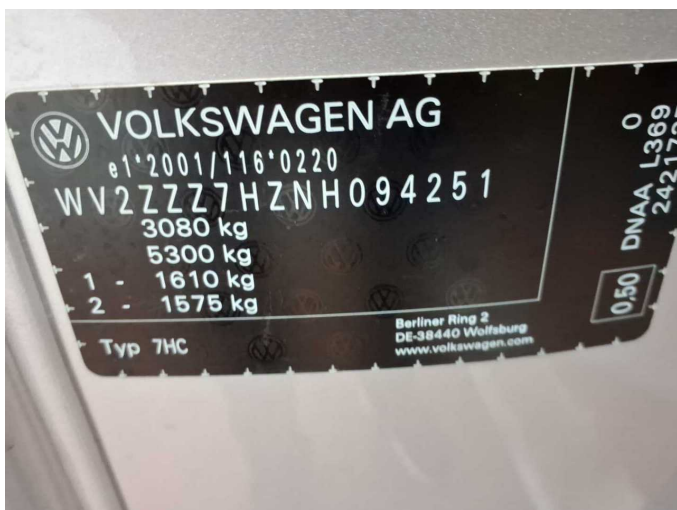


Figure 11: VIN



Figure 12: Mounted tyres



Figure 19: Additional tyres

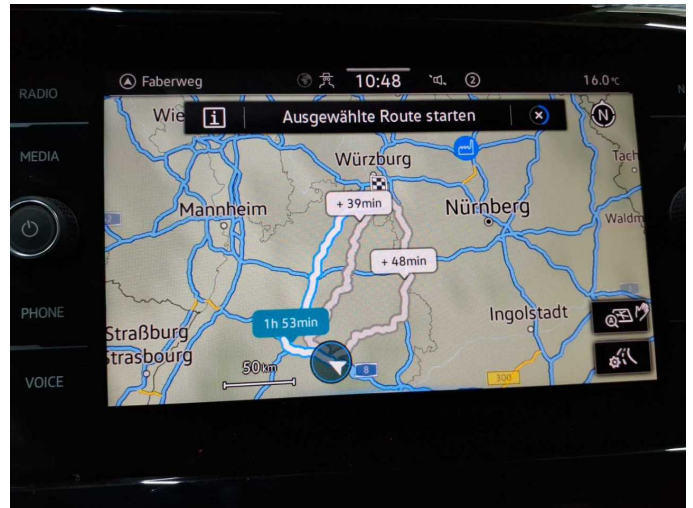


Figure 20: Navigation



Figure 21: Misc.



Figure 22: Misc.

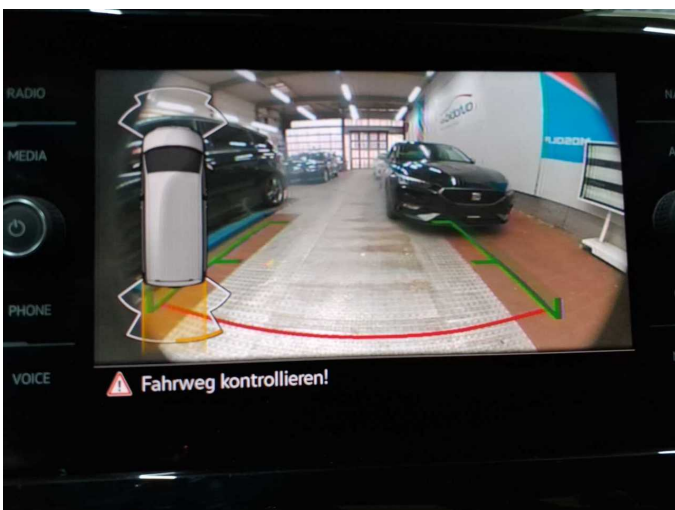


Figure 23: Misc.



Figure 24: Misc.



Figure 25: Misc.



Figure 26: Misc.



Figure 27: Misc.



Figure 28: Misc.



Figure 29: Misc.



Damage 1: Wheel / tyres: Wheel cover - rear right side - Missing - Replace



Damage 2: Wing mirror - left side: Cap - Scratch(es) - Smart repair



Damage 2: Wing mirror - left side: Cap - Scratch(es) - Smart repair



Damage 3: Side panel - rear right side: Side panel - dent(s) - Repair and paint



Damage 3: Side panel - rear right side: Side panel - dent(s) - Repair and paint



Damage 4: Door - front right side: Door - Scratch(es) - Paint



Damage 4: Door - front right side: Door - Scratch(es) - Paint



Damage 5: Door - rear right side: Door - Dent / paintcoat damage - Repair and paint



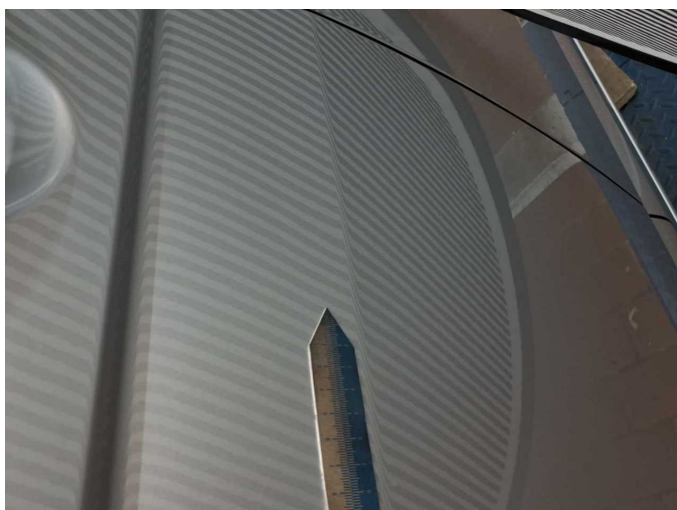
Damage 5: Door - rear right side: Door - Dent / paintcoat damage - Repair and paint



Damage 5: Door - rear right side: Door - Dent / paintcoat damage - Repair and paint



Damage 5: Door - rear right side: Door - Dent / paintcoat damage - Repair and paint



Damage 5: Door - rear right side: Door - Dent / paintcoat damage - Repair and paint



Damage 6: Front bumper: Front bumper - Scratched - Repair and paint



Damage 6: Front bumper: Front bumper - Scratched - Repair and paint



Damage 6: Front bumper: Front bumper - Scratched - Repair and paint



Damage 6: Front bumper: Front bumper - Scratched - Repair and paint