

Expertise

Protocol number: 46115240
Order No. / Reference: 26479449
Inspection date: 18 Jun 2026

Manufacturer: Volkswagen

Model: ID.5 4Motion GTX

VIN: WVGZZZE2ZPP508278



Vehicle details

Manufacturer / Type / Model / Equipment

Volkswagen ID.5 4Motion GTX

Vehicle Identification number WVGZZZE2ZPP508278

Mileage (Read) 60,314 km

First registration 9 Dec 2022

Number of holders 1

Power / Engine displacement 77 kw /

Fuel type / Cylinder Electric / 1

Gearbox / Number of gears Direct drive / 1

Type of drive All-wheel drive

Type of vehicle Station wagon

Colour / colour code Black (041)

Doors / Seats 5 / 5

Upholstery type Cloth / leather combination

Colour of upholstery Black-Grey



Vehicle details

Maintenance booklet / proof	digital proof / complete	Next maintenance in	174 Tag(e)
Last service on / at	12/2024 at 35,528		
Key is / should be	2 / 2	FZG documents	ZB#2 (B) was available (copy), ZB#1 (S) was not available.
		Letter No.	GP884017
Previous damage / Accident	Detectable	Repainting	None detectable
Inspection conditions	sufficient	Lifting equipment / pit	No
Test drive	Not performed	Engine function test	Performed
Manufacturer key number/ type code number	0603 / CQM 00017		
Emission standard	2017/1151;WLTP;reine Elektrofz	fine dust sticker	
Permitted total weight	2,750 kg	Empty weight	

Tyres

Mounted tyres

#	Tyre size	Type of tyre	Manufacturer	Tread depth
1)	235/55 R19 101T	Winter tires (with run-flat tires) on Light alloy	Pirelli	5mm / 5mm
2)	255/50 R19 103T	Winter tires (with run-flat tires) on Light alloy	Pirelli	5mm / 5mm

Additional tyres

#	Tyre size	Type of tyre	Manufacturer	Tread depth
1)	235/45 R21 101T	Summer tires (with run-flat tires) on Light alloy	Pirelli	4mm / 4mm
2)	255/40 R21 102T	Summer tires (with run-flat tires) on Light alloy	Pirelli	5mm / 5mm

Legend: Tread depth information for the left tire is listed first, for the right tire it is listed second on the axle in the direction of travel.



Equipment

Standard equipment

- 2 USB-C ports at the front, 2 USB-C charging ports at the rear of the center console (charging power up to 45 W)
- Airbags: Front and rear head airbags, front side airbags, center airbag
- 30-color ambient lighting
- Adaptive Cruise Control (ACC) "stop & go" including speed limiter
- Vehicle tool kit
- Car2X
- Black surround for the infotainment display and central controls
- ESP Electronic Stability Program (incl. ABS Anti-lock Braking System)
- Windscreen made of laminated safety glass (wirelessly heated and infrared-reflecting, noise-reducing)
- Back window, heater
- Interior mirror automatically dimming
- ISOFIX mounting points for child seats (mounting points for child seats on the outer rear seats and on the front passenger seat, i-Size compatible)
- Rear headrests (3)
- Paint finish: Solid color, with differing roof color
- LED matrix headlights - IQ.LIGHT (With automatic headlight control, bad weather light, welcome function)
- Steering wheel: Multifunction leather steering wheel, heated
- Fatigue detection
- Emergency braking assistant "Front Assist" with pedestrian and cyclist detection
- Stainless steel pedals in a "Play/Pause" design
- Radio "Ready 2 Discover Max"
- Radio accessories: 6 + 1 speakers
- Rain sensor
- Wheels: "Ystad" alloy wheels 8 J x 20 front, 9 J x 20 rear, in black, polished finish (Airstop tires 235/50 R 20 front, Airstop tires 255/45 R 20 rear)
- Front windshield washer nozzles automatically heated
- Rear side windows and rear window tinted
- Seat belts: Three-point automatic seat belts at the front with height adjustment and belt tensioner (3 three-point automatic seat belts at the rear)
- Seats: Armrest for front seats
- Seats: Heated front seats
- Seats: Front seats with height adjustment
- Voice control
- Bumpers in a sporty design
- Engine underguard
- First aid kit, warning triangle and high-visibility vest
- Prepared for later activation: "Discover Pro" navigation function
- Turning brake function and evasive steering support
- Airbag for driver and front passenger, with front passenger airbag deactivation
- Permanent 4MOTION all-wheel drive
- App-Connect including App-Connect Wireless for Apple CarPlay and Android Auto
- Electrically adjustable, folding and heated exterior mirrors
- third brake light
- e-Sound
- Parking aid (warning signals for obstacles in the front and rear area)
- Driving profile selection
- Dynamic high beam control "Dynamic Light Assist" for LED matrix headlights
- Transmission: 1-speed automatic
- Infotainment accessories: Online update capability from ID.Software 2.1
- Air conditioning "Air Care Climatronic" (with active combination filter, stationary air conditioning and 2-zone temperature control)
- Front headrests
- Mode 3 Type 2 charging cable, 16 A
- 3D LED taillights with dynamic turn signals
- The strip between the headlights is illuminated.
- Illuminated makeup mirrors in the sun visors
- Variable center console (with interchangeable inserts for cup holders and storage compartments)
- Emergency call service (no registration required, service is activated upon delivery)
- Upholstery: Seat center panels of the front seats and the outer rear seats in "GTX" fabric
- Radio accessories: Digital radio reception DAB+
- Tire pressure monitoring system
- Wheel accessories: Covers for alloy wheels
- Wheel accessories: Wheel locks with enhanced theft protection
- Keyless Start system (without safe locking)
- Electromechanical power steering (speed-dependent control)
- Seat belts: Warning tone and light for unfastened seat belts in the front and rear.
- Seats: Rear seat backrest asymmetrically split and foldable, with pass-through and center armrest (2 cup holders)
- Lane keeping assistant "Lane Assist"
- Telephone interface
- Ambient lighting with logo projection
- Traffic sign recognition
- Electronic immobilizer
- Central locking including remote control



Extra equipment

- Charging cable: Mains charging cable for household socket
- Package: Design package "Plus" (panoramic roof - laminated safety glass for front side windows; rear window and rear side windows tinted)
- Package: Infotainment package (Navigation system "Discover Pro" - Telephone interface "Comfort" with inductive charging function)
- Package: Sport package "Plus" (Adaptive chassis control DCC incl. driving profile selection - progressive steering)
- Wheels: Alloy wheels (4) "Narvik" 8.5 J x 21 front, 9 J x 21 rear, in black / diamond-turned (wheels in black, diamond-turned surface - covers for alloy wheels - Airstop tires 235/45 R 21 front, Airstop tires 255/40 R 21 rear - PIRELLI tires - wheel locks with enhanced theft protection)
- Package: Assistance package (Anti-theft alarm system with interior monitoring, backup horn and tow-away protection - Parking assistant "Park Assist Plus" incl. parking aid - Proactive occupant protection system in conjunction with "Front Assist" - Rear view camera - Keyless locking and starting system "Keyless Access", with safe locking - Illuminated door handle recesses)
- Package: Comfort package "Plus" (luggage net, luggage compartment floor, "Air Care Climatronic" air conditioning with active combination filter, stationary climate control and 3-zone temperature control, net partition)
- Textile floor mats front and rear

Brief expert findings

Documents submitted	At the time of the inspection, the vehicle registration certificate Part 2 (title) was available, but the vehicle registration certificate Part 1 (document) was not. (Copy)
VIN comparison	The vehicle identification number (VIN) was read from the vehicle and its conformity with the submitted documents was confirmed by the undersigned during the inspection.
Inspection	The inspection conditions were sufficient for the assessment of the vehicle. No lifting equipment or pit was available for inspecting the vehicle. Therefore, inspection of the vehicle's underside was only possible to a limited extent.
Test drive	No test drive/shunting maneuver was carried out during the inspection of the vehicle.
Engine function test	An engine test run was performed.

Value reducing factors

No.	Component group	Description
1	Bonnet	Bonnet - dent(s) - Smooth repair work
2	Door - rear right side	Strip - outer - Scratch(es) - Replace
3	Boot lid / rear door	Rear spoiler - Scratch(es) - Smart repair
4	Front bumper	Front bumper - Scratch(es) - Smart repair
5	Side panel - rear right side	Side panel - Dent / paintcoat damage - Repair and paint
6	Roof	Roof (Anätzung) - Paint defect - Repair and paint
7	2nd wheel set	1 alloy rim - Scratch(es) - Replace
8	2nd wheel set	1 alloy rim - Scratch(es) - Replace

Previous damages

No.	Previous damage	Extent of damage (Net)
1	Side - left, Provided by user / customer, from 23 Nov 2023	971,51 €



Order/Scope of Order

An order was placed to prepare a sales report for the described vehicle. This report includes the following:

- Description of key vehicle information
- Documentation of equipment features
(Delivery by third-party service providers)
- Documentation of damage, defects, missing parts
- Documentation of prior damage, unrepaired prior damage, repainting
- A brief visual or functional inspection of the equipment details, if possible.
(Functional testing of driver assistance systems is not included in the scope of services!)
- a photographic documentation of the vehicle

Basis for the order

This product is based on the guidelines for vehicle returns and valuations published by Alphabet Fleet GmbH. The expert makes the specific findings in each individual case objectively, within the framework of the prescribed standards, based on their own expertise.

The vehicle inspection takes place in a fully assembled, unassembled state.

Damage or defects that can only be detected during disassembly/diagnostic work or through further investigation remain within the realm of prognostic risk. An increased risk exists due to concealed defects caused by fraudulent misrepresentation and which were not identifiable by the expert.

Damage or defects resulting from normal use or wear and tear of the vehicle will be accepted in accordance with the applicable standard.

There was no explicit identification or monetary consideration of the expected features within the product.

Features which, in their nature and extent, slightly exceed normal use but do not constitute unacceptable damage, will be documented and indicated as signs of wear, if applicable.

Damage or defects that, according to the applicable standard, can no longer be attributed to normal use or wear and tear are listed under "Value Reducing Factors" in the product description.

Depending on the product specification, a monetary ID can be provided. If this takes place, the costs can be 100% or pro rata depending on the vehicle's age and mileage.

Previous damages

According to available information previous damages were repaired at the vehicle. Traces of repairs, which allow conclusions about the area of repair, were not recognizable during the inspection.

Comments

- Winterradsatz ist kein Bestandteil des Auslieferungsumfangs.



Figure 1: Diagonal front (left)



Figure 2: Diagonal front (right)



Figure 3: Diagonal rear (left)



Figure 4: Diagonal rear (right)

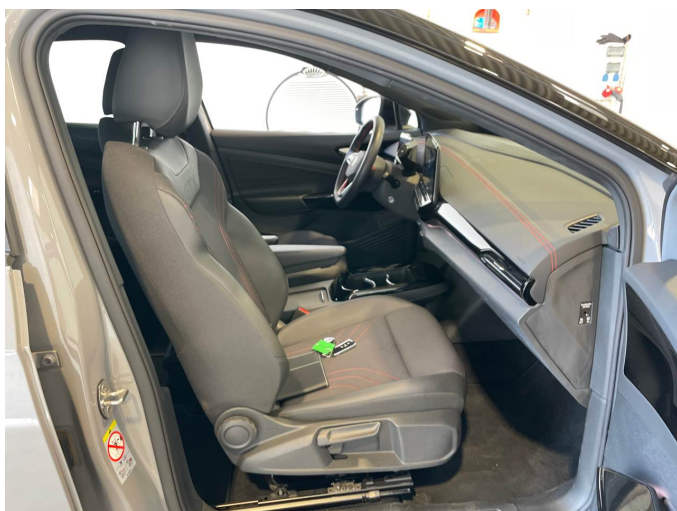


Figure 5: Interior - front



Figure 6: Interior - rear



Figure 7: Instrument cluster



Figure 8: Instrument panel



Figure 9: Interior 360° view



Figure 10: Cargo area

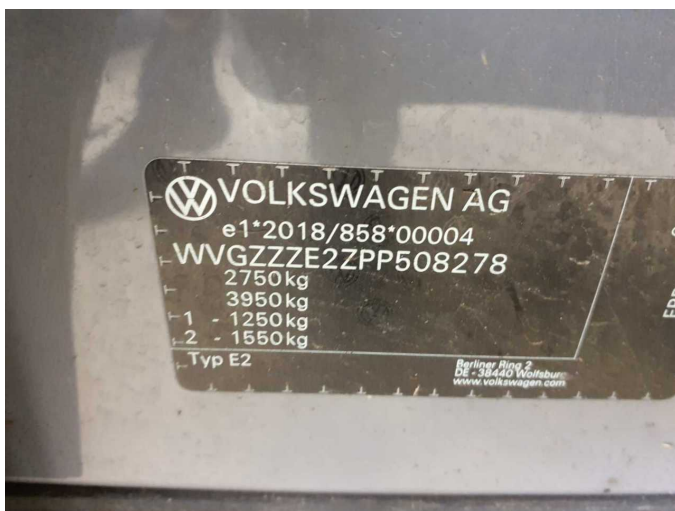


Figure 11: VIN



Figure 12: Mounted tyres



Figure 13: Documents



Figure 14: Additional tyres



Figure 15: Additional tyres



Figure 16: Navigation



Figure 17: Misc.



Figure 18: Misc.



Figure 19: Misc.



Figure 20: Misc.



Figure 21: Misc.

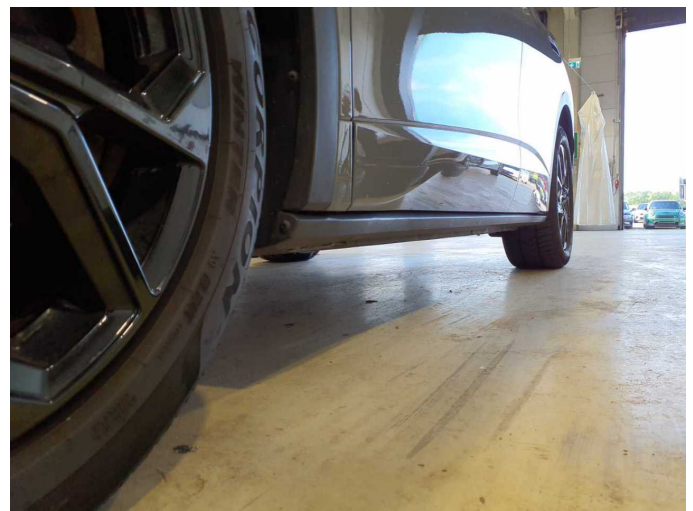


Figure 22: Misc.



Figure 23: Misc.



Figure 24: Misc.



Figure 25: Misc.



Figure 26: Misc.



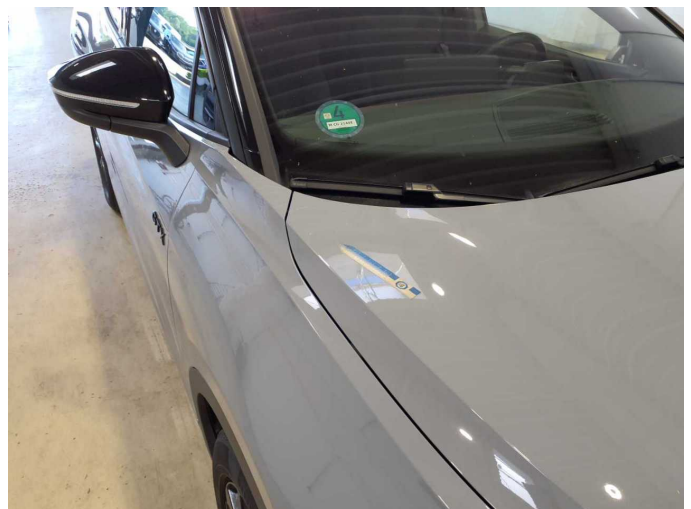
Figure 27: Misc.



Figure 28: Misc.



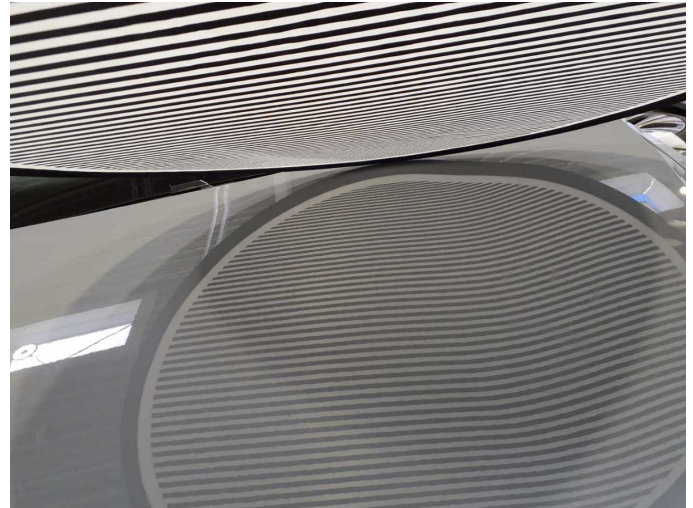
Figure 29: Misc.



Damage 1: Bonnet: Bonnet - dent(s) - Smooth repair work



Damage 1: Bonnet: Bonnet - dent(s) - Smooth repair work



Damage 1: Bonnet: Bonnet - dent(s) - Smooth repair work



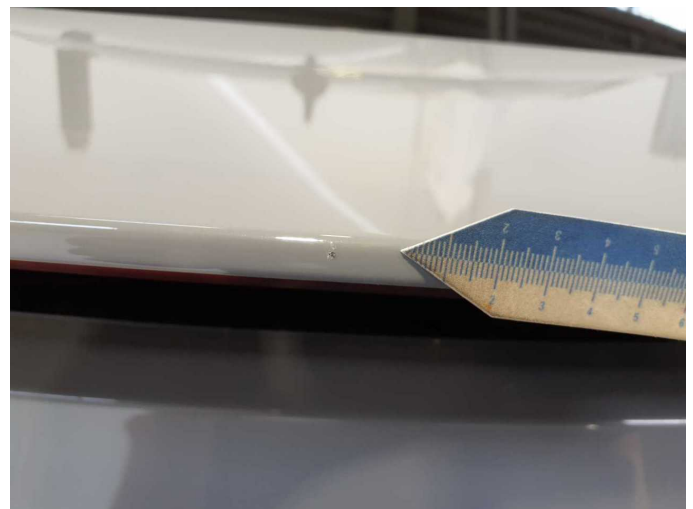
Damage 2: Door - rear right side: Strip - outer - Scratch(es) - Replace



Damage 2: Door - rear right side: Strip - outer - Scratch(es) - Replace



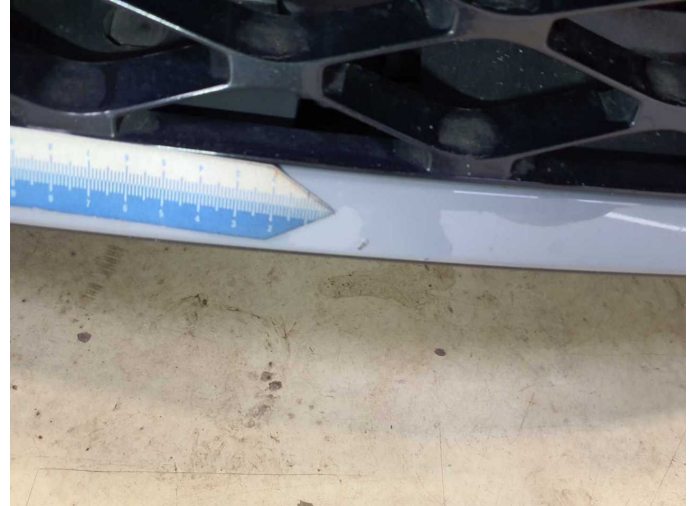
Damage 3: Boot lid / rear door: Rear spoiler - Scratch(es) - Smart repair



Damage 3: Boot lid / rear door: Rear spoiler - Scratch(es) - Smart repair



Damage 4: Front bumper: Front bumper - Scratch(es) - Smart repair



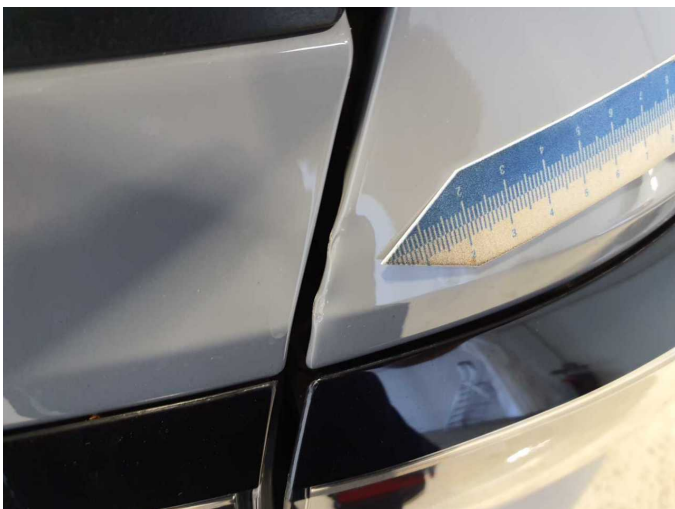
Damage 4: Front bumper: Front bumper - Scratch(es) - Smart repair



Damage 5: Side panel - rear right side: Side panel - Dent / paintcoat damage - Repair and paint



Damage 5: Side panel - rear right side: Side panel - Dent / paintcoat damage - Repair and paint



Damage 5: Side panel - rear right side: Side panel - Dent / paintcoat damage - Repair and paint



Damage 6: Roof: Roof (Anätzung) - Paint defect - Repair and paint



Damage 6: Roof: Roof (Anätzung) - Paint defect - Repair and paint



Damage 7: 2nd wheel set: 1 alloy rim - Scratch(es) - Replace



Damage 7: 2nd wheel set: 1 alloy rim - Scratch(es) - Replace



Damage 8: 2nd wheel set: 1 alloy rim - Scratch(es) - Replace



Damage 8: 2nd wheel set: 1 alloy rim - Scratch(es) - Replace