



Assessment

- Vehicle Inspection Report -

Number: 10279482
From: 23.03.2026

» Overview

Order number: 1002364348
Order completed: 19.03.2026 13:20
Report number: 10279482
VIN: WVVZZZCD4PW519625



Front Left 3/4



Rear Right 3/4



Mileage



Assessment

Number: 10279482
From: 23.03.2026

- Vehicle Inspection Report -

» Vehicle Data

Vehicle category:	Passenger Car
Vehicle type:	EstateCar
Make:	Volkswagen
Model:	Golf
Manufacturers and type code:	0603 / CNM
Date of first registration:	01.12.2022
Mileage:	72,207 km
Proof of mileage:	ReadOff
Exterior colour:	Pure White
Roof colour:	Pure White
Propulsion:	Front
Fuel:	Diesel
Engine size (cc):	2,000 ccm
Performance:	85 kW (116 PS)
Length:	
Height:	
Width:	
Permitted total weight:	
Wheelbase:	
Number of powered axles:	2
Cylinders:	4
Euronorm:	Euro 6
Number of doors:	4
Number of seats:	5
Gearbox:	Manual 6-speed
Upholstery type:	Lining fabrics
Interior colour:	Soul-Schwarz/Soul-Schwarz/Schwarz/ Storm Grey
Number of keys:	2

» Documents & Maintenance

Statutory inspection date:	
Registration certificate available:	No
Registration certificate received:	No
License plate:	None
Maintenance book:	Digital
Maintenance:	Completed
Maintenance last date:	
Maintenance last mileage:	
Remainder until next maintenance:	3,500 KM



Assessment

- Vehicle Inspection Report -

Number: 10279482
From: 23.03.2026

"Ventura" 7.5J x 17, tires 225/45 R17	Diversity antenna for FM reception
10-color ambient lighting	Door and side trim panel
12-V outlet in luggage compartment	Driver alert system
2 LED reading lights in front and 2 in rear	Driver and front passenger airbag with front passenger airbag deactivation
2 USB-C ports in the front, 2 USB-C charging sockets on the center console in rear, charging capacity up to 45 W	Driving on the right
3 head restraints in rear	Dynamic headlight range control
3-point seat belt for center rear seat	Dynamic Road Sign Display
3-point seat belts for the outer rear seats	Electric auxiliary air heater
3-point seat belts in front with height adjustment and seat belt pretensioners	Electromechanical parking brake with Auto Hold function
4 alloy wheels "Ventura" 7.5J x 17	Electromechanical speed-sensitive power steering
4-cylinder diesel engine 2.0 l	Electronic differential lock XDS
4-cylinder diesel engine 2.0 l TDI, 85 kW	Electronic engine sound
6+1 speakers	Electronic immobilizer
6-speed manual transmission	Electronic restriction of top speed
Adaptive Cruise Control ACC stop & go incl. speed limiter	Electronic Stability Control and electromechanical brake booster
Air Care Climatronic 3 zone automatic climate control w/ allergen filter, enhanced air filter a. controls in rear	Elimination of nameplate for engine designation on luggage compartment lid
Alternator 140 A	Emergency call service; no registration required, service is activated upon delivery
App-Connect incl. App-Connect Wireless for Apple CarPlay and Android Auto	Emission standard EU6 AP
Auto. Emergency Braking Front Assist with Pedestrian and Cyclist Monitoring	Equipment options subset for Germany
Auto-dimming interior rearview mirror	Ext. mirrors, power-adjustable, folding a. heated, w/ memory feature a. front passenger ext. mirror lowering function
Automatic headlight control with LED separate daytime running light and entry and exit lighting	Extended pedestrian protection
Automatically-heated washer nozzles in front	Exterior mirrors: aspherical on driver side, convex on front passenger side
Battery 420 A (70 Ah)	First aid kit, warning triangle and safety vest
Black roof rails	Front center armrest, height- and longitudinally adjustable
Body-colored bumpers	Front seats with height adjustment
Body-colored exterior mirror housings and door handles	Front stabilizer bar
Body-colored rear spoiler	Front-wheel drive
Car2X	Fuel system for diesel engine
Carpet mats in front and rear	Gearshift knob in leather
Chrome elements on power mirror and window regulator switches, chrome trims on the vents	Green heat-insulating glass windows on sides and in rear
Comfort equipment	Headliner
Comfort seats in front	Heated front seats
Cornering light and poor weather light	High-beam control Light Assist
Curtain airbags in front and rear, side airbags in front, center airbag	Illuminated door handle recesses
Decorative inserts "Nature Cross Brushed" for dashboard and front door trim panels	Illuminated vanity mirrors in sun visors
Digital radio reception DAB+	Initial standard fuel filling
Disc brakes in front	Inserts of front seats and outer rear seats in fabric "Life"
Disc brakes in rear	Instrument cluster with electronic speedometer, odometer and trip odometer, tachometer
	IQ.DRIVE assistance systems package



Assessment

- Vehicle Inspection Report -

Number: 10279482
From: 23.03.2026

ISOFIX anchors for child seats on outer rear bench seats and on front passenger seat, compatible for i-Size	Remote unlocking for rear seat backrest
Keyless Start without SAFELOCK	Safety-optimized front head restraints
Laminated safety glass windshield, heat- and sound-insulating	Semi-automated driving assistance TravelAssist and lane keeping system Lane Assist
Lane change system Side Assist, Rear Traffic Alert and exit warning system	Semiconductor restrictions
Leather-wrapped multi-function steering wheel, heated	Service indicator 30 000 km or 2 years (variable)
LED Plus headlamps	Shock absorption in front
LED Plus headlamps	Special identification label for EC for M1 passenger vehicles
LED rear combination lamps	Standard battery/alternator capacity
Left-hand drive	Standard climatic zones
License plate carrier in front and rear (ECE)	Standard engine starter
Lights & Vision package incl. high-beam control Light Assist	Standard manufacturing sequence
LongLife Service Regime	Standard paint coating
Lumbar supports in front	Standard pedal cluster
Manual in German (Germany)	Standard rear axle
Manual transmission MQ281	Start-stop system with regenerative braking
Mobile phone interface with inductive charging feature	Surround lighting with welcome light
Multi-color Digital Cockpit Pro, selection of different info profiles possible	Suspension range 06 installation control only, no requirement forecast
Multifunction camera	Tailgate/trunk lid unlocking from outside
Navigation system "Discover Media" incl. Streaming & Internet	Tire Mobility Set: 12-volt compressor and tire sealant
Navigation system "Discover Media" incl. Streaming & Internet	Tire Pressure Monitoring System
Net partition	Tire suppliers for EU countries
No special edition	Tires 225/45 R17
No special purpose vehicle, standard equipment	Tool kit
Non-folding front passenger seat backrest	Transport protection film (minimum protection) with additional transport protection measures
Non-smoker's package: Storage compartment and 12-V outlet in front	Two-tone horn
Not hot country	Type approval country Germany
Oncoming vehicle braking when turning and swerve support	Unsplit rear bench seat, asymmetric split folding backrest, with center armrest
Online service, with OCU, with head unit coding, without engine immobilizer interconnection	UWB-capable country and carrier frequency, 433.92 to 434.42 MHz
Operating permit, alteration	Variant
Operating voltage 12 V	Vehicle class differentiation -5H0-
Park Assist with Park Distance Control	Vehicles without special upgrade measures
Part set without country-specific prescriptive standard	VWD model year change
Preparation for We Connect and We Connect Plus	Wagon
Radio	Warning signal and warning light for front and rear seat belts not fastened
Rain sensor	Weight range 8 installation control only, no requirement forecast
Rear exhaust tailpipe (standard)	Wheel locks with extended theft protection
Rear floor panel module, type 4	Wheelbase
Rear fog light on one side, back-up light on both sides	Winter package
Rear shock absorption, basic version 1	Without activated carbon canister with SCR
Refrigerant R1234yf	Without Adaptive Chassis Control
Regional code " ECE " for radio	Without additional decorative trims



Assessment

- Vehicle Inspection Report -

Number: 10279482
From: 23.03.2026

- Without additional front underbody guard
- Without additional tires
- Without alternative drive system
- Without auxiliary heater/parking heater
- Without camera systems/accident sensors
- Without charging cable
- Without curb weight range
- Without decals and emblems
- Without electric motor (hybrid)
- Without extended safety system
- Without fire extinguisher
- Without headlamp washer system, with washer fluid level indicator
- Without head-up display
- Without hill start assist/hill descent control/comfort driving assist
- Without interior light in footwell
- Without locking and starting systems
- Without mode 3 charging cable
- Without preparation for rotating beacon/siren combination
- Without preparation for two-way radio installation
- Without rear stabilizer bar
- Without roof insert (standard roof)
- Without seat ventilation/massage seat
- Without second battery
- Without special body measures
- Without trailer hitch
- Without voice control



Assessment

- Vehicle Inspection Report -

Number: 10279482
From: 23.03.2026

» Tyres

MOUNTED TYRES

Make	Location	Position	Type	Rim	Dimensions	Profile depth
Michelin	Front	Left	Summer	Aluminium	225/45 R 17 91 W	5.0 mm
Michelin	Front	Right	Summer	Aluminium	225/45 R 17 91 W	5.0 mm
Michelin	Rear	Left	Summer	Aluminium	225/45 R 17 91 W	5.0 mm
Michelin	Rear	Right	Summer	Aluminium	225/45 R 17 91 W	5.0 mm

Permitted: Yes

Roadworthy: Yes



Assessment

- Vehicle Inspection Report -

Number: 10279482
From: 23.03.2026

» Devaluation Factors

Nr	Location	Damage type	Repair type
1	Floor mat(s)	Hole	Replace

» Usage Damages

Nr	Location	Damage type	Repair type
1	Outside rear-view mirror housing L	Abrasion	Acceptable
2	Bodywork	No damage	Acceptable



Assessment

- Vehicle Inspection Report -

Number: 10279482
From: 23.03.2026

» Commercial devaluation

Accidental vehicle:	Yes
Known previous damages:	No
Previous damages detectable:	Yes
Repainting present:	Yes
Repainting professionally executed:	Yes
Paint thickness measurement performed:	Yes - with abnormalities/deviations

Nr	Location	Damage	Repair type	Repair cost
1	Other	Liability loss		€ 6,200.00
Total without VAT:				€ 6,200.00

PAINTHICKNESS MEASUREMENT RESULTS

Part	Paint (µm)
Paint thickness Door FL (µm)	272.0
Paint thickness Bonnet (µm)	212.0
At least 3 measurements were carried out per component.	



Assessment

Number: 10279482
From: 23.03.2026

- Vehicle Inspection Report -

» Notes On The Assessment

Details of the assignment and the scope of the assessment:

The order was placed to prepare a condition report on the described vehicle.

The vehicle condition assessment was carried out in accordance with the order on the basis of the standards for vehicle assessments specified by the client. The expert makes the findings in the individual case on the basis of his own expertise and at his own expert discretion.

Vehicle identification:

WVWZZZCD4PW519625

VIN checked and matches documentation

Vehicle condition:

Well maintained general condition

Inspection condition:

Restricted

Lifting platform/lifting equipment used:

No

Testdrive carried out:

No

Engine test carried out:

Yes



Assessment

- Vehicle Inspection Report -

Number: 10279482
From: 23.03.2026

» Remarks

This copy was generated electronically. It is valid without an original signature.

Additional notes on the condition report:

(19.03.2026 13:15) Brems Scheiben vorne nahe Verschleißgrenze



Assessment

- Vehicle Inspection Report -

Number: 10279482
From: 23.03.2026

» Commercial Pictures



Front Left 3/4



Front Right 3/4



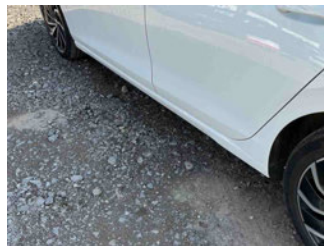
Rear Left 3/4



Rear Right 3/4



Mileage



Sill outer L



Sill outer R



Chassis nr



Wheel FL



Wheel FR



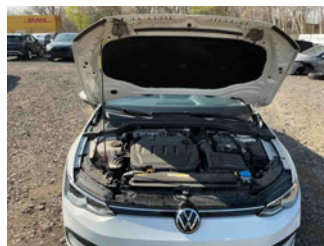
Wheel RL



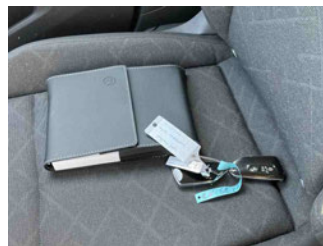
Wheel RR



Central console



Engine compartment



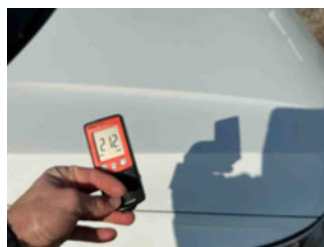
Documents



Interior arrangement



Paint thickness Door FL



Paint thickness Bonnet



History Maintenance



Interior - front



Assessment

- Vehicle Inspection Report -

Number: 10279482
From: 23.03.2026



Interior - rear



GPS/Radio



Assessment

- Vehicle Inspection Report -

Number: 10279482
From: 23.03.2026

» Devaluation Damages

DEVALUATION FACTORS

1 - Floor mat(s) - Hole - Replace



USAGE DAMAGES

1 - Outside rear-view mirror housing L - Abrasion - Acceptable



2 - Bodywork - No damage - Acceptable

