

Expertise

Protocol number: 45599365
Order No. / Reference: 26256579
Inspection date: 22 May 2026

Manufacturer: Volkswagen

Model: Touareg 3.0 V6 TDI 4Motion DPF Aut. R-Line

VIN: WVGZZZCR9PD009533



Vehicle details

Manufacturer / Type / Model / Equipment

Volkswagen Touareg 3.0 V6 TDI 4Motion DPF Aut. R-Line

Vehicle Identification number WVGZZZCR9PD009533

Mileage (Read) 119,085 km

First registration 16 Jan 2023

Number of holders 1

Power / Engine displacement 170 kw / 2,967 ccm

Fuel type / Cylinder Diesel / 6

Gearbox / Number of gears Automatic / 8

Type of drive All-wheel drive

Type of vehicle SUV

Colour / colour code Metallic silicon grey (M7Q)

Doors / Seats 5 / 5

Upholstery type Leather

Colour of upholstery Black

Vehicle with smoke odor no



Vehicle details

Maintenance booklet / proof	digital proof / complete	Next maintenance in	1,600 km
Last service on / at	08/2025 at 90,661 km		
Key is / should be	2 / 2	FZG documents	ZB#2 (B) was available (copy), ZB#1 (S) was not available.
		Letter No.	GP877168
Previous damage / Accident	None detectable	Repainting	None detectable
Inspection conditions	sufficient	Lifting equipment / pit	No
Test drive	Not performed	Engine function test	Performed
Manufacturer key number/ type code number	0603 / COB 00129		
Emission standard	EURO6;WLTP;AP;PI/CI; M, N1 I	fine dust sticker	
Permitted total weight	2,850 kg	Empty weight	

Tyres

Mounted tyres

#	Tyre size	Type of tyre	Manufacturer	Tread depth
1)	285/45 R20 108W	Summer tyres on Light alloy	Pirelli	6mm / 6mm
2)	285/45 R20 108W	Summer tyres on Light alloy	Pirelli	6mm / 6mm

Additional tyres

#	Tyre size	Type of tyre	Manufacturer	Tread depth
1)	225/55 R19 111V	Winter tyres on Light alloy	Goodyear	5mm / 5mm
2)	225/55 R19 111V	Winter tyres on Light alloy	Goodyear	5mm / 5mm

Replacement

Typ	Tyre size	Type of tyre	Manufacturer	Tread depth
	Tirefit	Expiration date 06/2026		

Legend: Tread depth information for the left tire is listed first, for the right tire it is listed second on the axle in the direction of travel.



Equipment

Standard equipment

- Airbag for driver and front passenger, with front passenger airbag deactivation
- Adaptive Cruise Control (ACC) "stop & go" including speed limiter
- Outdoor temperature display
- Headliner in Soul Black
- Diesel particulate filter
- Tachometer
- Electronic Stability Program (ESP)
- Driving profile selection
- High beam control "Light Assist"
- Pedestrian protection measures expanded
- Luggage compartment cover with electric opening
- Rear window heated
- Air conditioning system "Air Care Climatronic"
- Front headrests
- LED headlights with LED daytime running lights
- Dynamic headlight range control
- Illuminated makeup mirrors in the sun visors
- front center armrest
- Navigation system "Discover Premium"
- Emergency braking assistant "Front Assist"
- Package: R-Line "Exterior", Volkswagen R
- Park Assist with reversing camera
- Wheels: Tire Mobility Set
- LED taillights
- Front windshield washer nozzles automatically heated
- Locking system: Luggage compartment lid with electric opening and closing
- Seat belts: Three-point automatic seat belts
- Seats: Seat center section and inner side panels of the front and outer rear seats in "Vienna" leather
- Seats: Front seats electrically adjustable, driver's seat with longitudinally adjustable thigh support
- Bumpers in body color
- Traffic sign recognition
- Electronic immobilizer
- Airbag, head airbag system including front side airbags
- white ambient lighting
- Electrically folding, adjustable, heated and dimming exterior mirrors
- third brake light
- Decorative inlays: Aluminum "Silver Wave"
- Display: Digital cockpit, multicolor, various information profiles selectable
- Automatic headlight control, with LED daytime running lights
- Windscreen made of laminated safety glass, heat and sound insulating
- Transmission: 8-speed automatic Tiptronic
- Rear window wiper with intermittent function
- Rear headrests (3)
- Paint finish: Uni Pure White
- Steering wheel: Multifunction sports steering wheel in leather, with paddle shifters
- Armrest - centre, rear
- Fatigue detection
- Non-smoking version
- Emergency call service
- Electronic parking brake
- Wheels: Alloy wheels (4) "Sebring" 8.5 J x 19, in anthracite, Volkswagen R
- Rear seat bench and backrest asymmetrically split, foldable, longitudinally adjustable
- Keyless Start system
- Power steering
- Seats: Pneumatically adjustable lumbar support in the front
- Seats: Heated front seats
- Lane keeping assistant "Lane Assist"
- Start-stop system with brake energy recuperation
- Textile floor mats front and rear
- Prepared for "Guide & Inform" and "Security & Service"
- Central locking including remote control



Extra equipment

- black roof rails
- Luggage compartment floor including luggage management system (with sliding fixing strap and bar on rails)
- Lighting: IQ.LIGHT - LED matrix headlights (Dynamic Light Assist high beam control for LED matrix headlights - LED matrix headlights with LED daytime running lights - LED taillights with dynamic turn signals - headlight cleaning system)
- Package: Driver Assistance Package "Plus" (Adaptive Cruise Control ACC "stop & go", with speed limiter - Three-point automatic front seat belts with height adjustment and belt tensioners, for proactive occupant protection system - Intersection Assist - Proactive occupant protection system - Driving Assistant "Travel Assist" - Lane Keeping Assist "Lane Assist" - Traffic Jam Assist and "Emergency Assist" - Lane Change Assist "Side Assist")
- Package: R-Line "Exterior Black Style" Volkswagen R (black exterior mirror housings - radiator grille - dark red LED taillights with dynamic turn signals - "R" style bumpers, bumper and door lower sections in body color, air intakes with black louvers - black trim strips on the side windows)
- Wheels: Alloy (4) "Nevada" 9 J x 20, in black (tires 285/45 R 20 - wheel locks with enhanced theft protection)
- Windows: Rear side windows and rear window tinted
- Anti-theft alarm system (electronic immobilizer - interior monitoring - backup horn - tow-away protection)
- Fuel tank with a capacity of 90 liters
- Paint finish: Metallic
- Package: Ambient lighting package for R-Line (multicoloured ambient lighting - illuminated stainless steel door sills, front with "R-Line" logo)
- Package: Connectivity package including telephone interface (App-Connect: Apple CarPlay, Android Auto from Google and MirrorLink - "Business" telephone interface with inductive charging function - USB-C interface and USB charging socket)
- Package: Comfort package "Keyless Access" (tailgate with sensor-controlled opening and time-delayed electric closing, with remote unlocking - keyless locking and starting system "Keyless Access" with safe locking)
- Package: Memory package "Plus" (electrically adjustable, folding, heated and dimming exterior mirrors, passenger mirror lowering and memory function - electrically adjustable front seats with memory function and longitudinally adjustable thigh support)
- Panoramic tilt/slide sunroof with panoramic roof at the rear
- Radio accessories: Sound system "DYNAUDIO Consequence" (16-channel amplifier - 12+1 speakers - subwoofer - 730 watts total power)

Brief expert findings

Documents submitted	At the time of the inspection, the vehicle registration certificate Part 2 (title) was available, but the vehicle registration certificate Part 1 (document) was not. (Copy)
VIN comparison	The vehicle identification number (VIN) was read from the vehicle and its conformity with the submitted documents was confirmed by the undersigned during the inspection.
Inspection	The inspection conditions were sufficient for the assessment of the vehicle. No lifting equipment or pit was available for inspecting the vehicle. Therefore, inspection of the vehicle's underside was only possible to a limited extent.
Test drive	No test drive/shunting maneuver was carried out during the inspection of the vehicle.
Engine function test	An engine test run was performed.

Value reducing factors

No.	Component group	Description
1	Boot lid / rear door	Boot lid - dent(s) - Smooth repair work
2	Side panel - rear left side	Sill - Scratch(es) - Smart repair

Wear and tear

No.	Component group	Description
1	Front bumper	Front bumper - Stone chips - No deduction
2	Bonnet	Bonnet - Stone chips - No deduction
3	Vehicle glazing	Windscreen - Stone chips - No deduction
4	Interior	Interior - Soiled - No deduction
5	Rear bumper	Rear bumper - Scratch(es) - No deduction

The vehicle shows signs of wear and tear commensurate with its age and use.



Order/Scope of Order

An order was placed to prepare a sales report for the described vehicle. This report includes the following:

- Description of key vehicle information
- Documentation of equipment features
(Delivery by third-party service providers)
- Documentation of damage, defects, missing parts
- Documentation of prior damage, unrepaired prior damage, repainting
- A brief visual or functional inspection of the equipment details, if possible.
(Functional testing of driver assistance systems is not included in the scope of services!)
- a photographic documentation of the vehicle

Basis for the order

This product is based on the guidelines for vehicle returns and valuations published by Alphabet Fleet GmbH. The expert makes the specific findings in each individual case objectively, within the framework of the prescribed standards, based on their own expertise.

The vehicle inspection takes place in a fully assembled, unassembled state.

Damage or defects that can only be detected during disassembly/diagnostic work or through further investigation remain within the realm of prognostic risk. An increased risk exists due to concealed defects caused by fraudulent misrepresentation and which were not identifiable by the expert.

Damage or defects resulting from normal use or wear and tear of the vehicle will be accepted in accordance with the applicable standard.

There was no explicit identification or monetary consideration of the expected features within the product.

Features which, in their nature and extent, slightly exceed normal use but do not constitute unacceptable damage, will be documented and indicated as signs of wear, if applicable.

Damage or defects that, according to the applicable standard, can no longer be attributed to normal use or wear and tear are listed under "Value Reducing Factors" in the product description.

Depending on the product specification, a monetary ID can be provided. If this takes place, the costs can be 100% d or pro rata depending on the vehicle's age and mileage.

Previous damages

No apparent prior damage that had been repaired could be found on the vehicle.

Comments

- Winterradsatz ist kein Bestandteil des Auslieferungsumfangs.



Figure 1: Diagonal front (left)



Figure 2: Diagonal front (right)



Figure 3: Diagonal rear (left)



Figure 4: Diagonal rear (right)

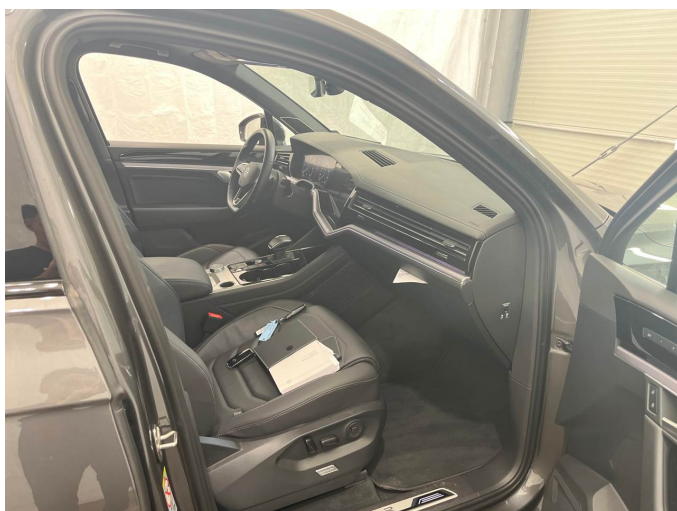


Figure 5: Interior - front



Figure 6: Interior - rear



Figure 7: Instrument cluster



Figure 8: Instrument panel



Figure 9: Interior 360° view



Figure 10: Cargo area

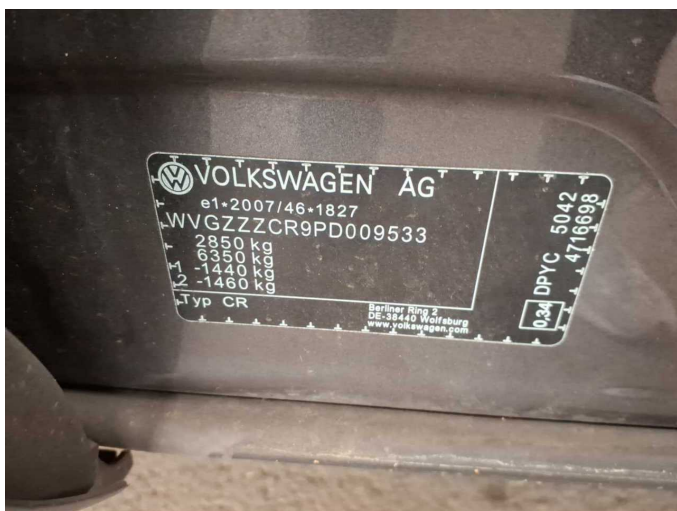


Figure 11: VIN



Figure 12: Mounted tyres



Figure 13: Documents



Figure 14: Documents



Figure 15: Additional tyres



Figure 16: Navigation



Figure 17: Misc.



Figure 18: Misc.



Figure 19: Misc.



Figure 20: Misc.



Figure 21: Misc.



Figure 22: Misc.

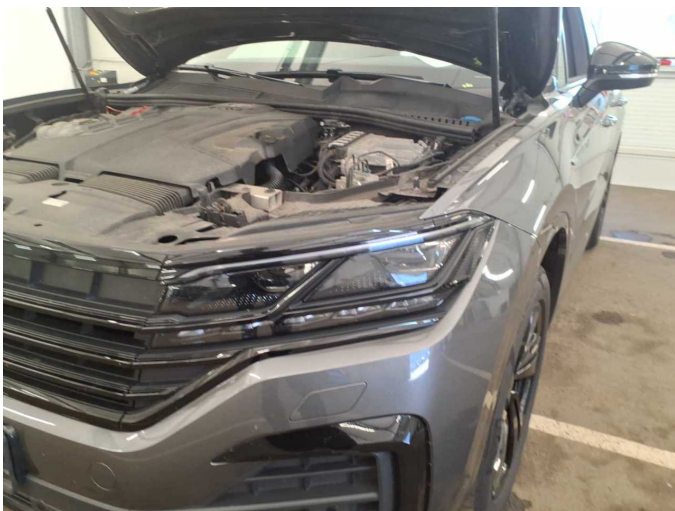


Figure 23: Misc.

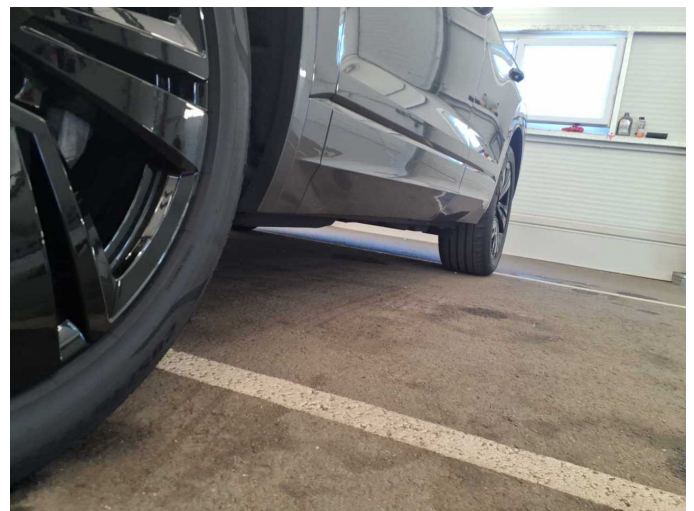


Figure 24: Misc.



Figure 25: Misc.



Figure 26: Misc.



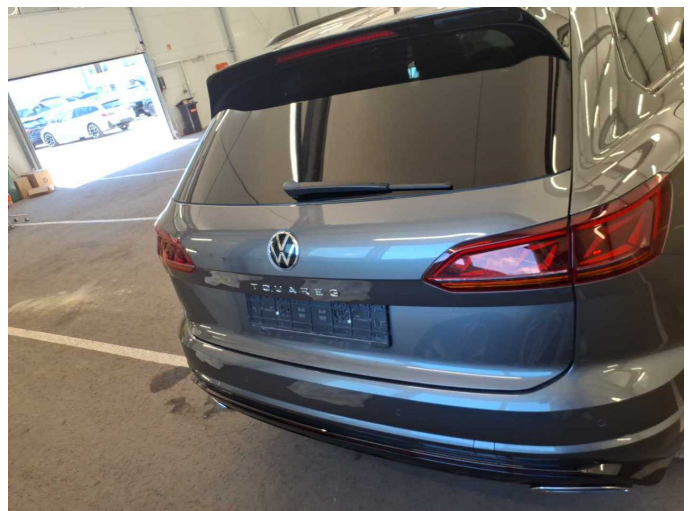
Figure 27: Misc.



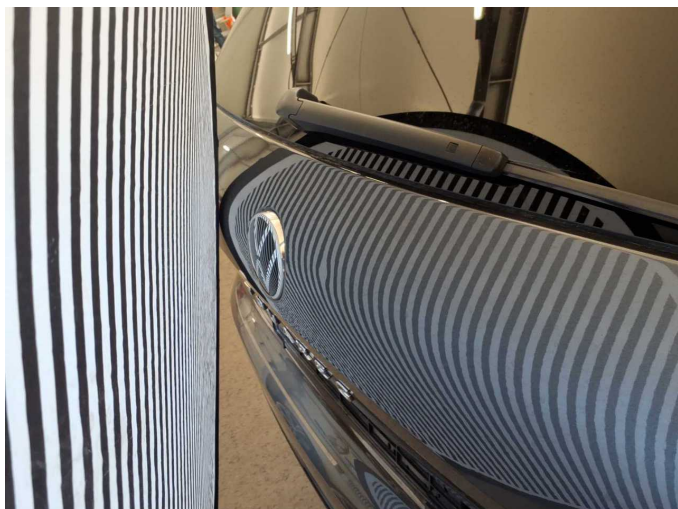
Figure 28: Misc.



Figure 29: Misc.



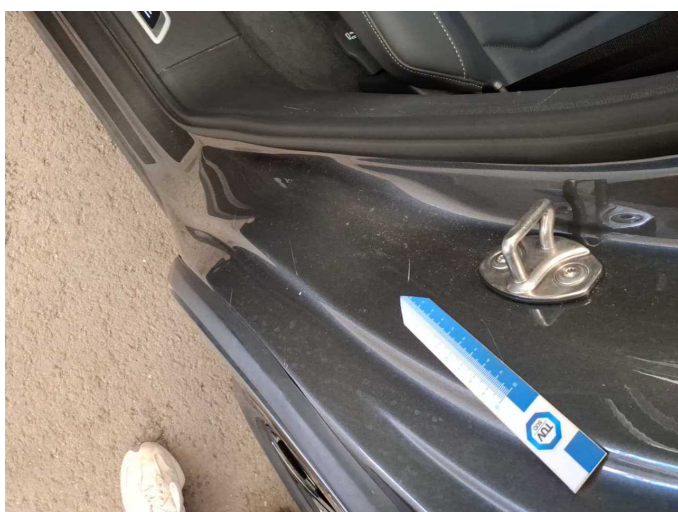
Damage 1: Boot lid / rear door: Boot lid - dent(s) - Smooth repair work



Damage 1: Boot lid / rear door: Boot lid - dent(s) - Smooth repair work



Damage 2: Side panel - rear left side: Sill - Scratch(es) - Smart repair



Damage 2: Side panel - rear left side: Sill - Scratch(es) - Smart repair