

## Expertise

Protocol number: 45883789  
Order No. / Reference: 26450522  
Inspection date: 10 Jun 2026

Manufacturer: Ford

Model: Focus Turnier 1.5 EcoBlue Start-Stopp-System Aut. TITANIUM X

VIN: WF0PXXGCHPNG26806



### Vehicle details

#### Manufacturer / Type / Model / Equipment

Ford Focus Turnier 1.5 EcoBlue Start-Stopp-System Aut. TITANIUM X

**Vehicle Identification number** WF0PXXGCHPNG26806

**Mileage (Read)** 66,609 km

**First registration** 22 Mar 2023

**Number of holders** 1

**Power / Engine displacement** 85 kw / 1,499 ccm

**Fuel type / Cylinder** Diesel / 4

**Gearbox / Number of gears** Manual / 6

**Type of drive** Front drive

**Type of vehicle** Station wagon

**Colour / colour code** Frozen White

**Doors / Seats** 5 / 5

**Upholstery type** Cloth

**Colour of upholstery** Black



Vehicle details			
<b>Maintenance booklet / proof</b>	digital proof / complete	<b>Next maintenance in</b>	48 %
<b>Last service on / at</b>	12/2025 at 60,102 km		
<b>Key is / should be</b>	2 / 2	<b>FZG documents</b>	ZB#2 (B) was available (copy), ZB#1 (S) was not available.
		<b>Letter No.</b>	GP506032
<b>Previous damage / Accident</b>	Detectable	<b>Repainting</b>	None detectable
<b>Inspection conditions</b>	sufficient	<b>Lifting equipment / pit</b>	No
<b>Test drive</b>	Not performed	<b>Engine function test</b>	Performed
<b>Manufacturer key number/ type code number</b>	8566 / BYE 00005		
<b>Emission standard</b>	EURO6;WLTP;AP;PI/CI; M, N1 I	<b>fine dust sticker</b>	
<b>Permitted total weight</b>	2,035 kg	<b>Empty weight</b>	

## Tyres

Mounted tyres				
#	Tyre size	Type of tyre	Manufacturer	Tread depth
1)	215/50 R17 95V	Summer tyres on Light alloy	Continental	1mm / 1mm
2)	215/50 R17 95V	Summer tyres on Light alloy	Continental	4mm / 4mm
Additional tyres				
#	Tyre size	Type of tyre	Manufacturer	Tread depth
1)	205/60 R16 92H	Winter tyres on Light alloy	Goodyear	6mm / 6mm
2)	205/60 R16 92H	Winter tyres on Light alloy	Goodyear	6mm / 6mm
Replacement				
Typ	Tyre size	Type of tyre	Manufacturer	Tread depth
E	125/70 R16 96M	Summer tyres on Steel	Hankook	3 mm

**Legend: Tread depth information for the left tire is listed first, for the right tire it is listed second on the axle in the direction of travel.**

TÜV SÜD Auto Partner GmbH  
Wiesenring 2  
04159 Leipzig

Inspection location  
Hartmann Fleet Professionals GmbH  
Leerenstraße 25  
29683 Bad Fallingbommel



## Equipment



## Standard equipment

- Airbag: Passenger airbag deactivation
- Anti-lock braking system (ABS) with electronic brake force distribution (EBD)
- Attachment points behind the second row of seats for mounting the safety partition net
- Fabric headliner
- Roof spoiler painted in car color
- Digital instrument panel 12.3" (31.2 cm screen diagonal)
- Electronic Shifter
- Lane keeping assist including lane keeping assist
- Electric front and rear windows with all-around closing function
- FordPass Connect including live traffic information. Additionally for PowerShift automatic transmission: Ford Mobile Remote remote start function.
- Speed limiter - Intelligent speed limiter with speed limit display
- Illuminated glove compartment
- rear window wiper
- Interior mirror, automatically dimming
- Intelligent safety system - Front airbags for driver and front passenger - Front and rear head/shoulder airbags - Side airbags for driver and front passenger - Seat belt tensioners and force limiters in the front and on the outer seats of the 2nd row - 3-point seat belts on all seats, height-adjustable in the front - Safety pedal assembly
- Headrests: 2 front and 3 rear, height adjustable
- LED headlights - LED low beam - LED high beam - LED daytime running lights including integrated LED turn signals at the front - LED cornering lights, static, including integrated LED fog lights and maneuvering lights
- Rear center armrest - with 2 cup holders
- MyKey key system (individually programmable second key)
- Navigation: Ford SYNC 4 including Ford navigation system with AppLink, 13.2" touchscreen and DAB/DAB+ - 6 speakers - Amazon Alexa built-in voice assistant - Android Auto and Apple CarPlay - Steering wheel controls - Digital owner's manual - Bluetooth hands-free calling and audio streaming - USB ports - Voice control for audio and phone - Ford Power-Up software updates - Intelligent route suggestions - Customizable user profiles - Radio player - Audible and visual route guidance, dynamic and cloud-based navigation with advanced traffic information system, lane guidance and road map for Europe
- Pre-Collision Assist - Forward Alert System - with pedestrian and bicycle detection
- Rear view camera
- Headlights with delayed shut-off
- Side windows from the 2nd row of seats and rear window, dark tinted.
- Electromechanical speed-dependent power steering EPAS (Electric Power Assisted Steering)
- Seats: Driver's seat height-adjustable with manually adjustable lumbar support
- Ambient lighting, front
- Exterior mirrors painted in body color, electrically adjustable, heated and folding - with integrated turn signals - ambient lighting
- Hill start assist
- Roof rails, aluminum
- Diesel particulate filter (DPF)
- Tachometer
- Electronic Stability Program (ESP) - with Emergency Brake Assist (EBA) and Traction Control System (TCS)
- Electric parking brake with auto-hold function
- Ford Key Free System including Ford Power Start function - keyless locking/unlocking - keyless start
- Luggage compartment cover
- Luggage compartment lighting
- Cruise control
- Transmission: 8-speed automatic transmission
- Back window, heater
- Interior lighting with LED technology - front and rear, and map reading lights at the front.
- Isofix mounting including top tether anchor points on the outer seats of the 2nd row.
- Air conditioning with automatic temperature control for driver and passenger side, separately adjustable (2-zone automatic climate control)
- Knee pads on the center console
- LED taillights
- Steering wheel: 3-spoke design steering wheel - in Sensico leather look
- Steering column, adjustable in height and reach
- Make-up mirrors in driver and passenger sun visors
- Front center console "Premium" - sliding armrest - cup holders - storage compartments - 12-volt and USB connection
- Emergency call assistant
- Front and rear parking pilot system
- Upholstery: Cloth
- Post-Collision Assist: In the event of a severe collision, such as one that would deploy the airbag and in which the driver might be incapacitated, this system initiates braking. This reduces the risk of further collisions with other obstacles and road users after the initial impact. The driver can intervene and manually operate the accelerator or brake pedal throughout the entire process.
- Tire repair kit, maximum speed 80 km/h permissible.
- Tire Pressure Monitoring System (TPMS)
- Windscreen wipers with rain sensor (sensitivity adjustable)
- Headlight assistant with day/night sensor
- Selective driving mode switch - including 3 selectable driving modes: Normal, Sport and Eco
- Seats: Front passenger seat height-adjustable, manually with adjustable lumbar support
- Seats: Rear seat backrest foldable, 60:40 split with ski pass-through.



- Seats: Front sports seats with enhanced lateral support
- 12-volt power outlet in the luggage compartment
- Carpet floor mats front and rear, velour
- 2 USB ports in the center console, rear
- Variable radiator air intake
- Warning system for unfastened seat belts for the 1st and 2nd rows of seats

**Extra equipment**

- Adaptive LED matrix headlights - LED matrix low beam - LED matrix high beam - Dynamic LED matrix cornering lights - LED daytime running lights including integrated LED front turn signals - Static LED cornering lights including maneuvering and bad weather lights - Automatic headlight range control - Glare-free high beam assist
- Anti-theft alarm system including interior monitoring
- eCall
- Head-up display
- Paint finish: Frozen White
- Radio: B&O Sound System - 675 Watt premium sound system with 10 speakers, including subwoofer - Based on the renowned sound and design expertise of Bang & Olufsen
- Reversible luggage compartment mat
- Towbar preparation kit - including trailer stabilization function
- Wheels: Spare wheel - permissible for use up to a maximum speed of 80 km/h - steel wheel 3.5 J x 16 with 125/70 R16 tire

- Start-stop system
- Phone accessories: Inductive charging station for mobile devices - according to Qi standard, compatibility depends on the device
- Lashing eyes in the luggage compartment
- Electronic immobilizer
- Central locking with remote control and remote luggage compartment release

- Package: Driver Assistance Package II Drive Assist Intelligent adaptive cruise control Lane keeping assist Traffic jam assist with Stop&Go Traffic sign recognition Wrong-way driver warning radio Evasive steering assist Distance display and distance warning Driver drowsiness detection High beam assist (in conjunction with adaptive LED matrix headlights with glare-free high beam assist) Blind spot assist with cross traffic alert including emergency braking function (when reversing out of parking spaces) and trailer recognition Rear view camera with split view Electrically folding exterior mirrors with surround view
- Seats: Ford ergonomic driver and front passenger seats, 18-way adjustable: - Manually adjustable position, height, and tilt of the backrest and seat cushion (in conjunction with EcoBoost Hybrid - front passenger seat, 2-way adjustable) - Manually extendable thigh support - 4-way electrically adjustable lumbar support
- Tailgate, electric and sensor-controlled - opens and closes via foot movement
- Tires: 7 J x 17 light alloy wheels (4) with 215/50 R 17 tires in 5x3-spoke design, in Pearl Grey premium paint finish, diamond-turned

**Brief expert findings**

Documents submitted	At the time of the inspection, the vehicle registration certificate Part 2 (title) was available, but the vehicle registration certificate Part 1 (document) was not. (Copy)
VIN comparison	The vehicle identification number (VIN) was read from the vehicle and its conformity with the submitted documents was confirmed by the undersigned during the inspection.
Inspection	The inspection conditions were sufficient for the assessment of the vehicle. No lifting equipment or pit was available for inspecting the vehicle. Therefore, inspection of the vehicle's underside was only possible to a limited extent.
Test drive	No test drive/shunting maneuver was carried out during the inspection of the vehicle.
Engine function test	An engine test run was performed.

**Value reducing factors**

No.	Component group	Description
1	Boot lid / rear door	Boot lid - dent(s) - Smooth repair work
2	Wheel / tyres	Tyre - front (einseitig abgefahren) - Does not meet the leasing specifications - Replace
3	Front bumper	Front bumper - Scratch(es) - Paint

**Wear and tear**

No.	Component group	Description
1	Vehicle glazing	Windscreen - Stone chips - No deduction

The vehicle shows signs of wear and tear commensurate with its age and use.



## Previous damages

No.	Previous damage	Extent of damage (Net)
1	Rear, Provided by user / customer, from 7 Jan 2024	938,21 €

## Order/Scope of Order

An order was placed to prepare a sales report for the described vehicle. This report includes the following:

- Description of key vehicle information
- Documentation of equipment features  
*(Delivery by third-party service providers)*
- Documentation of damage, defects, missing parts
- Documentation of prior damage, unrepaired prior damage, repainting
- A brief visual or functional inspection of the equipment details, if possible.  
*(Functional testing of driver assistance systems is not included in the scope of services!)*
- a photographic documentation of the vehicle

## Basis for the order

This product is based on the guidelines for vehicle returns and valuations published by Alphabet Fleet GmbH. The expert makes the specific findings in each individual case objectively, within the framework of the prescribed standards, based on their own expertise.

The vehicle inspection takes place in a fully assembled, unassembled state.

Damage or defects that can only be detected during disassembly/diagnostic work or through further investigation remain within the realm of prognostic risk. An increased risk exists due to concealed defects caused by fraudulent misrepresentation and which were not identifiable by the expert.

Damage or defects resulting from normal use or wear and tear of the vehicle will be accepted in accordance with the applicable standard.

There was no explicit identification or monetary consideration of the expected features within the product.

Features which, in their nature and extent, slightly exceed normal use but do not constitute unacceptable damage, will be documented and indicated as signs of wear, if applicable.

Damage or defects that, according to the applicable standard, can no longer be attributed to normal use or wear and tear are listed under "Value Reducing Factors" in the product description.

Depending on the product specification, a monetary ID can be provided. If this takes place, the costs can be 100% d or pro rata depending on the vehicle's age and mileage.

## Previous damages

According to available information previous damages were repaired at the vehicle. Traces of repairs, which allow conclusions about the area of repair, were not recognizable during the inspection.



Figure 1: Diagonal front (left)



Figure 2: Diagonal front (right)



Figure 3: Diagonal rear (left)



Figure 4: Diagonal rear (right)



Figure 5: Interior - front



Figure 6: Interior - rear



Figure 7: Instrument cluster



Figure 8: Instrument panel



Figure 9: Interior 360° view



Figure 10: Cargo area



Figure 11: VIN



Figure 12: Mounted tyres



Figure 13: Documents



Figure 14: Additional tyres



Figure 15: Additional tyres

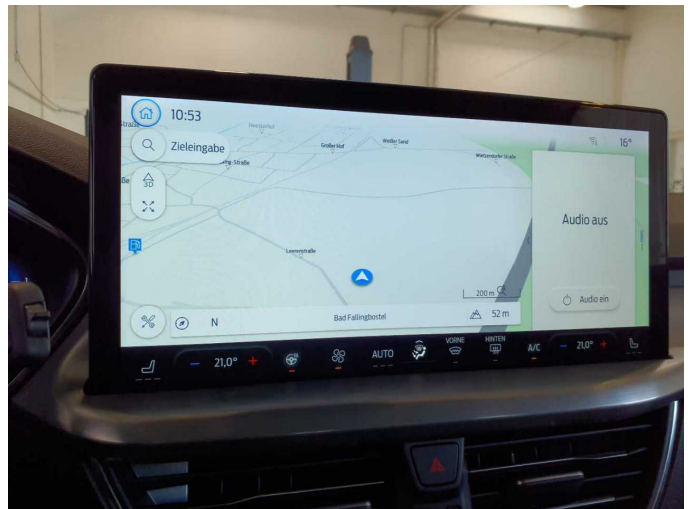


Figure 16: Navigation



Figure 17: Misc.



Figure 18: Misc.



Figure 19: Misc.



Figure 20: Misc.



Figure 21: Misc.



Figure 22: Misc.

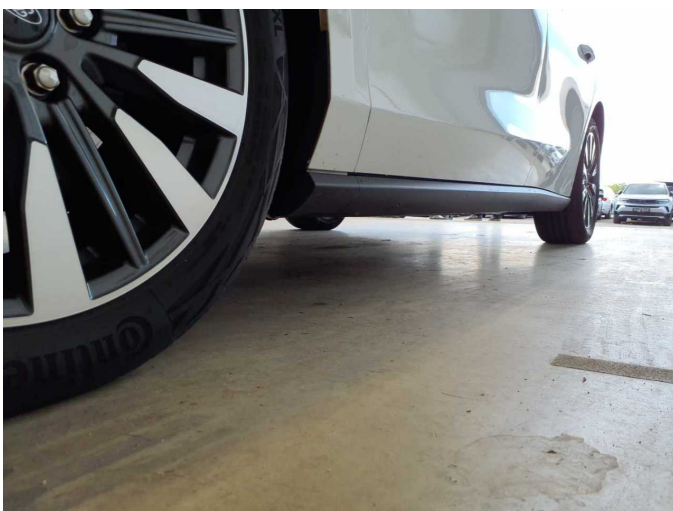


Figure 23: Misc.



Figure 24: Misc.



Figure 25: Misc.



Figure 26: Misc.



Figure 27: Misc.



Figure 28: Misc.



Figure 29: Misc.



Figure 30: Misc.



Figure 31: Misc.



Figure 32: Misc.



Damage 1: Boot lid / rear door: Boot lid - dent(s) - Smooth repair work



Damage 1: Boot lid / rear door: Boot lid - dent(s) - Smooth repair work



Damage 2: Wheel / tyres: Tyre - front (einseitig abgefahren) - Does not meet the leasing specifications - Replace



Damage 2: Wheel / tyres: Tyre - front (einseitig abgefahren) - Does not meet the leasing specifications - Replace



**Damage 2:** Wheel / tyres: Tyre - front (einseitig abgefahren) - Does not meet the leasing specifications - Replace



**Damage 3:** Front bumper: Front bumper - Scratch(es) - Paint



**Damage 3:** Front bumper: Front bumper - Scratch(es) - Paint