

Expertise

Protocol number: 46174457
Order No. / Reference: 26588270
Inspection date: 25 Jun 2026

Manufacturer: Mercedes-Benz

Model: Vito 116 CDI Extralang HA PRO Kasten

VIN: W1V44760513977316



Vehicle details

Manufacturer / Type / Model / Equipment

Mercedes-Benz Vito 116 CDI Extralang HA PRO Kasten

Vehicle Identification number W1V44760513977316

Mileage (Read) 148,257 km

First registration 21 Mar 2022

Number of holders 1

Next periodical technical inspection 04/2028
(Report on hand)

Power / Engine displacement 120 kw / 1,950 ccm

Fuel type / Cylinder Diesel / 4

Gearbox / Number of gears Manual / 6

Type of drive Rear drive

Type of vehicle Van

Colour / colour code ARKTIKWEISS

Doors / Seats 4 / 2

Upholstery type Cloth

Colour of upholstery Black

Re-import no

Vehicle with smoke odor no

readiness to drive Roadworthy



Vehicle details

Maintenance booklet / proof	digital proof / complete	Next maintenance in	367 Tag(e)
Last service on / at	06/2025 at 119,607 km		
Key is / should be	2 / 2	FZG documents	ZB#2 (B) was available (copy), ZB#1 (S) was not available.
		Letter No.	GH749834
Previous damage / Accident	None detectable	Repainting	Detectable
Inspection conditions	sufficient	Lifting equipment / pit	No
Test drive	Not performed	Engine function test	Performed
readiness to drive	Roadworthy		
Manufacturer key number/ type code number	2222 / BBJ 03137		
Emission standard	EURO6;WLTP;AR;PI/CI;N1 III, N2	fine dust sticker	
Permitted total weight	2,800 kg	Empty weight	

Tyres

Mounted tyres

#	Tyre size	Type of tyre	Manufacturer	Tread depth
1)	225/55 R17 109T	Winter tyres on Steel rim with wheel cover	Continental	6mm / 6mm
2)	225/55 R17 109T	Winter tyres on Steel rim with wheel cover	Continental	5mm / 5mm

Replacement

Typ	Tyre size	Type of tyre	Manufacturer	Tread depth
E	225/55 R17 109T	Summer tyres on Steel	Continental	8 mm

Legend: Tread depth information for the left tire is listed first, for the right tire it is listed second on the axle in the direction of travel.

TÜV SÜD Auto Partner GmbH
Wiesenring 2
04159 Leipzig

Inspection location
Mosolf SE & Co.KG
Faberweg 25
73230 Kirchheim unter Teck



Equipment



Standard equipment

- Screw-in towing eye front/rear
- Passenger side airbag
- ATTENTION ASSIST (ATTENTION ASSIST can assist the driver on long, monotonous journeys by monitoring attention. If signs of fatigue or increasing inattention are detected, it suggests a break.)
- Battery: fleece battery 12 V / 92 Ah
- Hill start assist
- Brake lights, adaptive
- Front cupholder
- Diesel particulate filter
- Entry grab handle for the cargo area sliding door
- Electronic Stability Program (ADAPTIVE ESP) with integrated anti-lock braking system (ABS) (traction control (ASR) - electronic brake force distribution (EBD) - brake assist (BAS))
- HVO-capable vehicle
- Parking brake
- Generator 14 V / 250 A
- Speed limit 210 km/h
- Transmission: 6-speed manual transmission TSG 380
- Weight variant 2,800 kg
- Seatbelt warning device for front passenger seat
- Seatbelt warning device for driver's seat
- Lockable glove box
- Main tank 57 liters
- Boot lid
- Interior trim of cargo area, side
- Instrument cluster with pixel matrix display (operated via the buttons on the multifunction steering wheel - round instruments for speedometer and tachometer or fuel level and coolant temperature - high-quality pixel matrix display in white and red between the large round instruments)
- Mercedes-Benz emergency call system (communication module (LTE) for digital services breakdown management)
- Package: BlueEFFICIENCY (Efficiency Package)
- Upholstery: Caluma fabric, black
- Radio: Digital Radio DAB
- Full wheel cover
- Tires: 205/65 R 16
- Tires: Premium protection tires (3 years)
- Wheels: Steel rims 6.5 J x 16
- Sliding door on the right, cargo/passenger compartment
- Crosswind Assist
- Seat: Lumbar support driver's seat
- Seats: Driver's seat Plus with flat seat surface (with Rawson Plus fabric)
- 12V socket
- continuous partition wall
- Pre-installation for Remote Services Plus
- Maintenance interval indicator >>ASSYST<
- Heat-insulating glass all around
- Axle ratio $i = 3.267$
- Driver's side airbag
- Electrically adjustable and heated exterior mirrors, left and right
- Outdoor temperature display
- Battery: Backup battery for starting process
- Fixing points in the roof frame
- third brake light
- COC documents
- Comfort roof control unit
- Electronic tachometer
- Electrical components for trailer socket (electrical lines for power supply of the trailer - without trailer hitch control unit)
- Driving light assistant (automatically switching on driving lights)
- Chassis: Standard chassis
- Electric window regulator driver/passenger (with anti-pinch protection, quick lowering and raising)
- Generator management (Generator management helps reduce fuel consumption and CO2 emissions. The generator is switched off and the vehicle's electrical system is powered by the battery when it is sufficiently charged. This relieves the engine of the burden of charging the battery, for example, during acceleration. - When braking and during coasting downhill, the generator is switched on and the vehicle's kinetic energy is recuperated to charge the battery.)
- Tempmatic controlled air conditioning
- Communication module (LTE) for digital services
- Headrests (2), front
- Paint finish: Solid color paint
- Steering wheel adjustable for tilt and height
- Headlight range control
- Multifunction steering wheel (with trip computer)
- Halogen fog lights
- Breakdown management
- Radio/Telematics, Audio 10 (DAB Digital Radio - 3.5-inch LCD display - Bluetooth hands-free system - 2-way front speakers)
- Tires: Tires without specified make
- Tires: Summer tires
- Headlights: halogen technology
- Key: 3-button remote control
- electromechanical power steering
- Seats: Adjustable passenger seat
- Seats: Comfort driver's seat
- Start-stop function
- Cruise control
- First aid kit
- Warning triangle
- Immobiliser
- Central locking with radio remote control
- Registration certificate, Part II



- Registration as a truck

Extra equipment

- Upgrading/downgrading (upgrading to 3.05 t GVW)
- Wireless remote control for auxiliary heater
- Windscreen washer system heater
- Interior lining of the cargo area up to roof height (wood)
- Comfort locking system with IR remote control (comfort opening and closing)
- Load anchoring rail system
- Center console with 1-DIN slot
- Package: Parking (reversing camera - PARKTRONIC)
- Radio/Navigation: Multimedia radio and navigation system "Audio 40" (7-inch LCD touchscreen - DAB digital radio - Apple CarPlay and Android Auto - Bluetooth 3.0 - Hands-free system - Live Traffic Information - 2-way front speakers)
- Wheels: Steel rims 6.5 J x 17
- Seat: Lumbar support, passenger seat
- Seat heating on passenger side
- Lashing rails on side wall to parapet strap
- Windshield washer fluid level warning light
- Burglar and theft alarm system (without interior monitoring)
- Rear camera not foldable
- Wooden floor (cargo area)
- Terminal block for electrical connections on the driver's seat box
- Large fuel tank, approx. 70 liters
- LED light strip in the cargo area
- Navigation accessories: Live Traffic Information
- Package: Smoker's package
- Tires: 225/55R17
- Tires: M+S 225/55 R 17
- Tire pressure monitoring (on front and rear axles (wireless))
- Spare wheel under the rear of the vehicle with jack
- Weld nuts side wall for extensions
- Seats: Comfort passenger seat
- Seat heating on driver's side
- Pre-installation for intelligent tachograph
- Auxiliary heater (hot water) (incl. instrument cluster with pixel matrix display)

Brief expert findings

Documents submitted	At the time of the inspection, the vehicle registration certificate Part 2 (title) was available, but the vehicle registration certificate Part 1 (document) was not. (Copy)
VIN comparison	The vehicle identification number (VIN) was read from the vehicle and its conformity with the submitted documents was confirmed by the undersigned during the inspection.
Inspection	The inspection conditions were sufficient for the assessment of the vehicle. No lifting equipment or pit was available for inspecting the vehicle. Therefore, inspection of the vehicle's underside was only possible to a limited extent.
Test drive	No test drive/shunting maneuver was carried out during the inspection of the vehicle.
Engine function test	An engine test run was performed.
readiness to drive	The vehicle was roadworthy at the time of inspection.

Value reducing factors

No.	Component group	Description
1	Wing mirror - left side	Mirror housing - Scratch(es) - Loss in value
2	Front bumper	Front bumper - Scratch(es) - Loss in value
3	Door - front right side	Door - dent(s) - Smooth repair work
4	Seat - front	Seat cover - left side - Holes - Smart repair
5	Body	Body - Glued / labelled - De-glue / neutralise
6	Sill - left side	Sill - Corrosion - Repair and paint
7	Rear bumper	Rear bumper - Scratched - Replace
8	Bonnet	Bonnet - Dent / paintcoat damage - Repair and paint
9	Door - front left side	Door - Dent / paintcoat damage - Repair and paint
10	Roof	Roof - Dent / paintcoat damage - Repair and paint



Wear and tear

No.	Component group	Description
1	Gearbox	Gear knob - Scratch(es) - No deduction
2	Interior	Interior - Soiled - No deduction
3	Trim / covers	Door trim - front left side - Scratch(es) - No deduction
4	Interior	Cargo area floor - Scratch(es) - No deduction
5	Vehicle glazing	Windscreen - Stone chips - No deduction
6	2nd wheel set	Steel rim set - complete - Corrosion - No deduction
7	Headlight	Headlight - left side - Stone chips - No deduction
8	Headlight	Headlight - right side - Stone chips - No deduction
9	Roof	Roof rail - right side - Stone chips - No deduction
10	Sliding door, right	Sliding door - dent(s) - No deduction
11	Boot lid / rear door	Boot lid - Dent / paintcoat damage - No deduction
12	Mudguard - right side	Mudguard - right side (Flugrost) - Corrosion - No deduction
13	Door - front right side	Door edge - Scratch(es) - No deduction

The vehicle shows signs of wear and tear commensurate with its age and use.

Missing parts

Description

Equipment - Vehicle tool kit

Documents - Service book

Repainting

No. Repainting

1 Side panel - rear right side

Paint coat thickness measurement

Side panel - rear right side 318 μm |

Order/Scope of Order

An order was placed to prepare a sales report for the described vehicle. This report includes the following:

- Description of key vehicle information
- Documentation of equipment features
(*Delivery by third-party service providers*)
- Documentation of damage, defects, missing parts
- Documentation of prior damage, unrepaired prior damage, repainting
- A brief visual or functional inspection of the equipment details, if possible.
(*Functional testing of driver assistance systems is not included in the scope of services!*)
- a photographic documentation of the vehicle



Basis for the order

This product is based on the guidelines for vehicle returns and valuations of light commercial vehicles published by Alphabet Fleet Management GmbH. The expert makes the specific findings in each individual case objectively, within the framework of the prescribed standards, based on their own expertise.

The vehicle inspection takes place in a fully assembled, unassembled state.

Damage or defects that can only be detected during disassembly/diagnostic work or through further investigation remain within the realm of prognostic risk. An increased risk exists due to concealed defects caused by fraudulent misrepresentation and which were not identifiable by the expert.

Damage or defects resulting from normal use or wear and tear of the vehicle will be accepted in accordance with the applicable standard.

There was no explicit identification or monetary consideration of the expected features within the product.

Features which, in their nature and extent, slightly exceed normal use but do not constitute unacceptable damage, will be documented and indicated as signs of wear, if applicable.

Damage or defects that, according to the applicable standard, can no longer be attributed to normal use or wear and tear are listed under "Value Reducing Factors" in the product description.

Depending on the product specification, a monetary ID can be provided. If this takes place, the costs can be 100% d or pro rata depending on the vehicle's age and mileage.

Previous damages

No apparent prior damage that had been repaired could be found on the vehicle.

Comments

- Das Fahrzeug konnte nicht angehoben werden, Folgekosten möglich.



Figure 1: Diagonal front (left)



Figure 2: Diagonal front (right)



Figure 3: Diagonal rear (left)



Figure 4: Diagonal rear (right)



Figure 5: Interior - front



Figure 6: Interior - rear



Figure 7: Instrument cluster



Figure 8: Instrument panel



Figure 9: Interior 360° view



Figure 10: Cargo area



Figure 11: VIN



Figure 12: Mounted tyres



Figure 13: Documents



Figure 14: Documents



Figure 15: Navigation



Figure 16: Misc.



Figure 17: Misc.



Figure 18: Misc.



Figure 19: Misc.



Figure 20: Misc.



Figure 21: Misc.



Figure 22: Misc.



Figure 23: Misc.



Damage 1: Wing mirror - left side: Mirror housing - Scratch(es) - Loss in value



Damage 1: Wing mirror - left side: Mirror housing - Scratch(es) - Loss in value



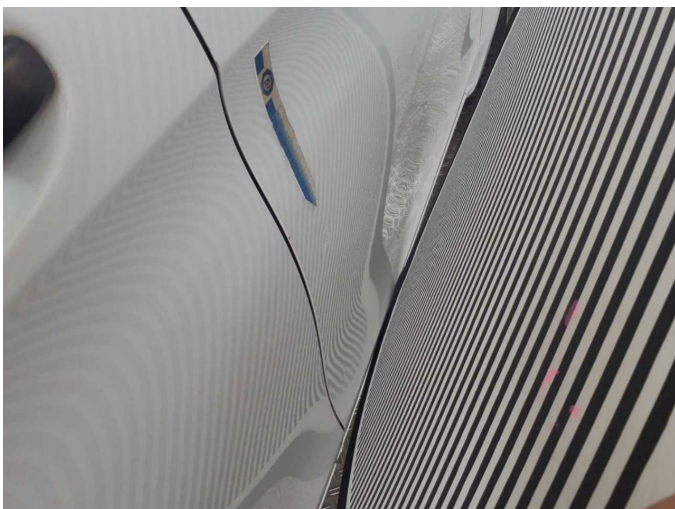
Damage 2: Front bumper: Front bumper - Scratch(es) - Loss in value



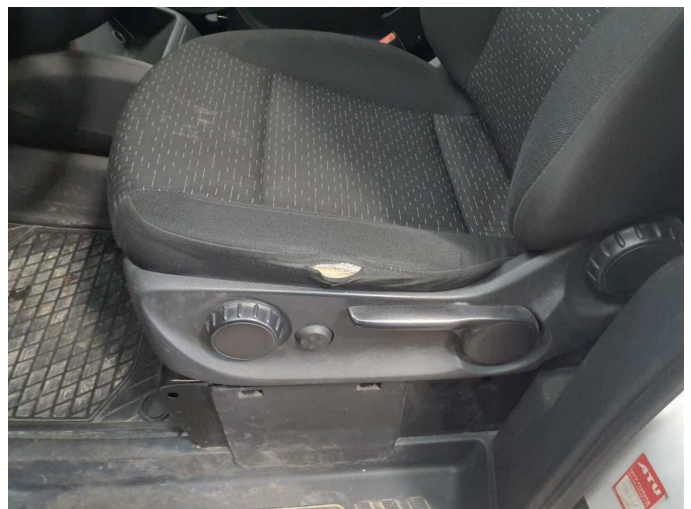
Damage 2: Front bumper: Front bumper - Scratch(es) - Loss in value



Damage 3: Door - front right side: Door - dent(s) - Smooth repair work



Damage 3: Door - front right side: Door - dent(s) - Smooth repair work



Damage 4: Seat - front: Seat cover - left side - Holes - Smart repair



Damage 4: Seat - front: Seat cover - left side - Holes - Smart repair



Damage 5: Body: Body - Glued / labelled - De-glude / neutralise



Damage 5: Body: Body - Glued / labelled - De-glude / neutralise



Damage 6: Sill - left side: Sill - Corrosion - Repair and paint



Damage 6: Sill - left side: Sill - Corrosion - Repair and paint



Damage 6: Sill - left side: Sill - Corrosion - Repair and paint



Damage 7: Rear bumper: Rear bumper - Scratched - Replace



Damage 7: Rear bumper: Rear bumper - Scratched - Replace



Damage 7: Rear bumper: Rear bumper - Scratched - Replace



Damage 7: Rear bumper: Rear bumper - Scratched - Replace



Damage 7: Rear bumper: Rear bumper - Scratched - Replace



Damage 8: Bonnet: Bonnet - Dent / paintcoat damage - Repair and paint



Damage 8: Bonnet: Bonnet - Dent / paintcoat damage - Repair and paint



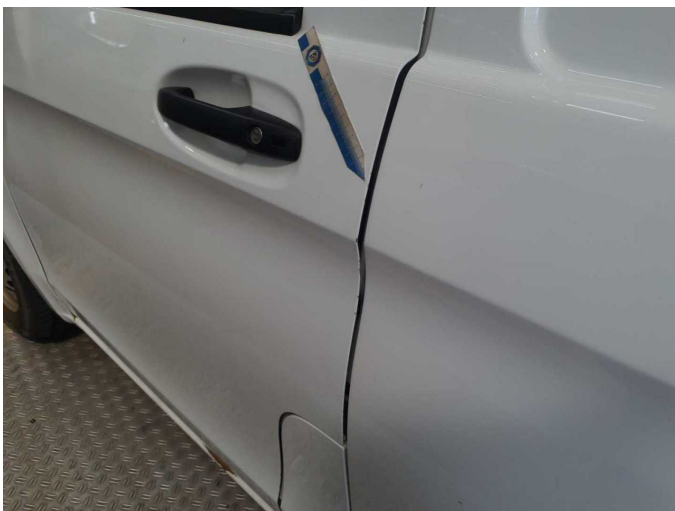
Damage 8: Bonnet: Bonnet - Dent / paintcoat damage - Repair and paint



Damage 8: Bonnet: Bonnet - Dent / paintcoat damage - Repair and paint



Damage 8: Bonnet: Bonnet - Dent / paintcoat damage - Repair and paint



Damage 9: Door - front left side: Door - Dent / paintcoat damage - Repair and paint



Damage 9: Door - front left side: Door - Dent / paintcoat damage - Repair and paint



Damage 9: Door - front left side: Door - Dent / paintcoat damage - Repair and paint



Damage 9: Door - front left side: Door - Dent / paintcoat damage - Repair and paint



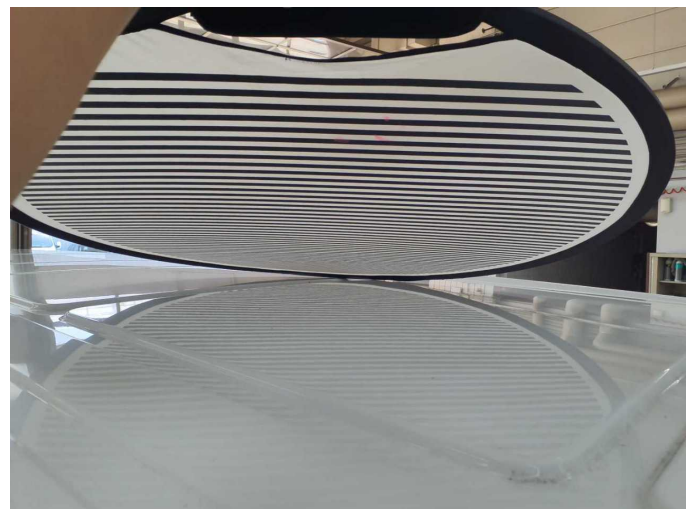
Damage 9: Door - front left side: Door - Dent / paintcoat damage - Repair and paint



Damage 10: Roof: Roof - Dent / paintcoat damage - Repair and paint



Damage 10: Roof: Roof - Dent / paintcoat damage - Repair and paint



Damage 10: Roof: Roof - Dent / paintcoat damage - Repair and paint



Repainting 1: Side panel - rear right side



Repainting 1: Side panel - rear right side



Wartungshistorie

(gemäß Auftraggeber Informationen)

Fahrgestellnummer: W1V44760513977316

Hersteller / Modell: MERCEDES-BENZ MERCEDES-BENZ Vito 116 CDI Extralang HA
PRO

Datum	KM-Stand	Beschreibung
30.01.2026	137.416	Reparatur Sonstiges; Systemtest/Eigendiagnose
19.11.2025	134.262	Systemtest/Eigendiagnose
27.06.2025	119.607	Regelwartungsdienst; Systemtest/Eigendiagnose
19.07.2024	80.247	Regelwartungsdienst
08.03.2024	64.034	Bremsscheiben+Beläge v+h
21.07.2023	37.948	Regelwartungsdienst