

Expertise

Protocol number: 46205640
Order No. / Reference: 26460379
Inspection date: 29 Jun 2026

Manufacturer: Volkswagen

Model: Golf Variant 2.0 TDI SCR DSG Life

VIN: WVVZZZCD4RW856394



Vehicle details

Manufacturer / Type / Model / Equipment

Volkswagen Golf Variant 2.0 TDI SCR DSG Life

Vehicle Identification number WVVZZZCD4RW856394

Mileage (Read) 85,967 km

First registration 23 Apr 2024

Number of holders 1

Next periodical technical inspection 04/2027

(Report not on hand)

Power / Engine displacement 85 kw / 1,968 ccm

Fuel type / Cylinder Diesel / 4

Gearbox / Number of gears Automatic / 7

Type of drive Front drive

Type of vehicle Station wagon

Colour / colour code Delfingrau Metallic

Doors / Seats 5 / 5

Upholstery type Cloth

Colour of upholstery Black

Re-import no

readiness to drive Roadworthy



Vehicle details

Maintenance booklet / proof	digital proof / complete	Next maintenance in	2,200 km
Last service on / at	11/2025 at 64,003 km		
Key is / should be	2 / 2	FZG documents	ZB#2 (B) was available (copy), ZB#1 (S) was not available.
		Letter No.	HB043321
Previous damage / Accident	Detectable	Repainting	None detectable
Inspection conditions	sufficient	Lifting equipment / pit	No
Test drive	Not performed	Engine function test	Performed
readiness to drive	Roadworthy		
Manufacturer key number/ type code number	0603 / CNM 01414		
Emission standard	EURO6;WLTP;AP;PI/CI; M, N1 I	fine dust sticker	
Permitted total weight	2,010 kg	Empty weight	

Tyres

Mounted tyres

#	Tyre size	Type of tyre	Manufacturer	Tread depth
1)	205/50 R17 93H	Winter tyres on Light alloy	Bridgestone	4mm / 4mm
2)	205/50 R17 93H	Winter tyres on Light alloy	Bridgestone	3mm / 4mm

Additional tyres

#	Tyre size	Type of tyre	Manufacturer	Tread depth
1)	225/45 R17 91W	Summer tyres on Light alloy	Nexen	4mm / 4mm
2)	225/45 R17 91W	Summer tyres on Light alloy	Nexen	6mm / 6mm

Legend: Tread depth information for the left tire is listed first, for the right tire it is listed second on the axle in the direction of travel.



Equipment

Standard equipment

- Airbag for driver and front passenger
- Ambient lighting
- App-Connect
- Exterior mirror housings and door handles in body color
- third brake light
- Car2X
- Decorative inlays "Nature Cross Brushed"
- Digital Cockpit Pro, multicolor
- Electronic differential lock XDS
- Electronic stability program and electromechanical brake booster
- Electric windows, front and rear
- Pedestrian protection measures expanded
- luggage compartment cover
- Transmission: 7-speed DSG
- Rear window wiper with intermittent function
- "Climatronic" air conditioning system
- Front headrests
- LED taillights
- Steering wheel: Multifunction leather steering wheel with paddle shifters
- Non-smoking version
- Emergency call service
- Package: Seat Comfort Package
- Wheels: Tire Mobility Set
- Keyless start system without safe locking
- electromechanical power steering
- Seat belts: Three-point automatic seat belts for the outer rear seats
- Seat covers in "Life" fabric
- Seats: Comfort seats in the front
- Start-stop system
- Bumpers in body color
- Ambient lighting with logo projection
- Green thermal insulation glazing, sides and rear
- Airbags: Front and rear head airbags, front side airbags, center airbag
- Electrically adjustable and heated exterior mirrors with memory function and passenger-side mirror lowering function.
- black roof rails
- Diesel particulate filter and SCR catalyst
- Parking assistance
- Electronic parking brake including auto-hold function
- Automatic headlight control, with LED daytime running lights
- Windscreen made of laminated safety glass, heat and sound insulating
- Speed limiter
- Rear window heated
- ISOFIX mounting points
- Rear headrests (3)
- LED reading lights at the front (2) and 2 at the rear
- LED headlights
- Dynamic headlight range control
- Fatigue detection
- Emergency braking assistant "Front Assist" with pedestrian and cyclist detection
- Tire pressure monitoring system (passive)
- Rear bench seat undivided, backrest asymmetrically split and foldable with center armrest
- Seat belts: Three-point automatic seat belt for the middle rear seat
- Seat belts: Three-point automatic seat belts at the front with height adjustment and belt tensioner
- Lane keeping assistant "Lane Assist"
- 12-volt power outlet in the luggage compartment
- Telephone interface with inductive charging function
- Electronic immobilizer
- Central locking without safe locking, with remote control and 2 remote folding keys



Extra equipment

- Airbag: Front and rear side airbags including proactive occupant protection system (front and rear head and side airbags, center airbag - proactive occupant protection system in conjunction with "Front Assist")
- Navigation system "Discover Media" incl. "Streaming & Internet" (6+1 speakers - App-Connect incl. App-Connect Wireless for Apple CarPlay and Android Auto - Multifunction camera - Navigation system "Discover Media" incl. "Streaming & Internet" - Radio - Traffic sign recognition)
- Package: Light and Sight Package incl. High Beam Control "Light Assist" (High Beam Control "Light Assist" - Automatically Dimming Interior Mirror - Multifunction Camera - Rain Sensor)
- Package: Winter (DSG) (Multifunction steering wheel in leather, heated, with shift paddles - Windscreen washer nozzles automatically heated - Front seats heated)
- Rear side windows and rear window tinted
- Seats: Sport comfort seats in the front (center panels of the front seats and outer rear seats in microfleece "ArtVelours")
- Wheels: Alloy wheels (4) "Nottingham" 7.5 J x 17 (wheel locks with enhanced theft protection - tires 225/45 R17)
- Anti-theft alarm system "Plus" (anti-theft alarm system with interior monitoring, backup horn and tow-away protection - keyless start system "Keyless Start" with safe locking)
- Package: Business Premium incl. navigation system (DSG) (6+1 speakers, App-Connect incl. App-Connect Wireless for Apple CarPlay, Android Auto, automatic distance control, adaptive cruise control (ACC) stop/go, speed limiter, emergency brake, pedestrian detection, travel assist, lane assist, emergency assist, leather multifunction steering wheel, heated, with shift paddles, multifunction camera, Discover Media navigation incl. streaming & internet (MP3, touchscreen, USB), cargo net partition, radio, heated windshield washer system, voice control, telephone interface, Comfort with inductive charging, textile floor mats, traffic sign recognition, heated front seats)
- Paint finish: Metallic
- Rear View reversing camera
- Wheels: Winter wheels (additional), alloy, "Nottingham" 6.5 J x 17 (4 alloy wheels 6.5 J x 17 - wheel wrench and jack - winter tires 205/50 R 17 H)

Brief expert findings

Documents submitted	At the time of the inspection, the vehicle registration certificate Part 2 (title) was available, but the vehicle registration certificate Part 1 (document) was not. (Copy)
VIN comparison	The vehicle identification number (VIN) was read from the vehicle and its conformity with the submitted documents was confirmed by the undersigned during the inspection.
Inspection	The inspection conditions were sufficient for the assessment of the vehicle. No lifting equipment or pit was available for inspecting the vehicle. Therefore, inspection of the vehicle's underside was only possible to a limited extent.
Test drive	No test drive/shunting maneuver was carried out during the inspection of the vehicle.
Engine function test	An engine test run was performed.
readiness to drive	The vehicle was roadworthy at the time of inspection.

Value reducing factors

No.	Component group	Description
1	Interior	Interior - Scratch(es) - No deduction
2	Boot lid / rear door	Boot lid - Glued / labelled - De-glue / neutralise
3	Wheel / tyres	Tyre - rear left side - Does not meet the leasing specifications - Replace
4	Wheel / tyres	Tyre - rear right side - Does not meet the leasing specifications - Replace
5	Wheel / tyres	Tyre - front left side - Does not meet the leasing specifications - Replace
6	Wheel / tyres	Tyre - front right side - Does not meet the leasing specifications - Replace
7	Wheel / tyres	Alloy rim - front right side - Scratched - Loss in value
8	Boot lid / rear door	Boot lid - Dent / paintcoat damage - Repair and paint
9	Front bumper	Front bumper - Deformed - Replace



Wear and tear

No.	Component group	Description
1	Bonnet	Bonnet - Stone chips - No deduction
2	Vehicle glazing	Windscreen - Stone chips - No deduction

The vehicle shows signs of wear and tear commensurate with its age and use.

Missing parts

Description

Equipment - Tirefit complete

Accident damages

No. Accident

1 Side - left

Order/Scope of Order

An order was placed to prepare a sales report for the described vehicle. This report includes the following:

- Description of key vehicle information
- Documentation of equipment features
(Delivery by third-party service providers)
- Documentation of damage, defects, missing parts
- Documentation of prior damage, unrepaired prior damage, repainting
- A brief visual or functional inspection of the equipment details, if possible.
(Functional testing of driver assistance systems is not included in the scope of services!)
- a photographic documentation of the vehicle

Basis for the order

This product is based on the guidelines for vehicle returns and valuations published by Alphabet Fleet GmbH. The expert makes the specific findings in each individual case objectively, within the framework of the prescribed standards, based on their own expertise.

The vehicle inspection takes place in a fully assembled, unassembled state.

Damage or defects that can only be detected during disassembly/diagnostic work or through further investigation remain within the realm of prognostic risk. An increased risk exists due to concealed defects caused by fraudulent misrepresentation and which were not identifiable by the expert.

Damage or defects resulting from normal use or wear and tear of the vehicle will be accepted in accordance with the applicable standard.

There was no explicit identification or monetary consideration of the expected features within the product.

Features which, in their nature and extent, slightly exceed normal use but do not constitute unacceptable damage, will be documented and indicated as signs of wear, if applicable.

Damage or defects that, according to the applicable standard, can no longer be attributed to normal use or wear and tear are listed under "Value Reducing Factors" in the product description.

Depending on the product specification, a monetary ID can be provided. If this takes place, the costs can be 100% d or pro rata depending on the vehicle's age and mileage.

Previous damages

Non-repaired previous damages were found at the vehicle. The necessary repair costs are listed in the expert report or if necessary, are listed in detail in a separately enclosed repair cost calculation.



Comments

- Die Unterbodenbesichtigung war nur ebenerdig & eingeschränkt möglich. Mehrkosten möglich.



Figure 1: Diagonal front (left)



Figure 2: Diagonal front (right)



Figure 3: Diagonal rear (left)



Figure 4: Diagonal rear (right)



Figure 5: Interior - front



Figure 6: Interior - rear



Figure 7: Instrument cluster



Figure 8: Instrument panel



Figure 9: Interior 360° view



Figure 10: Cargo area

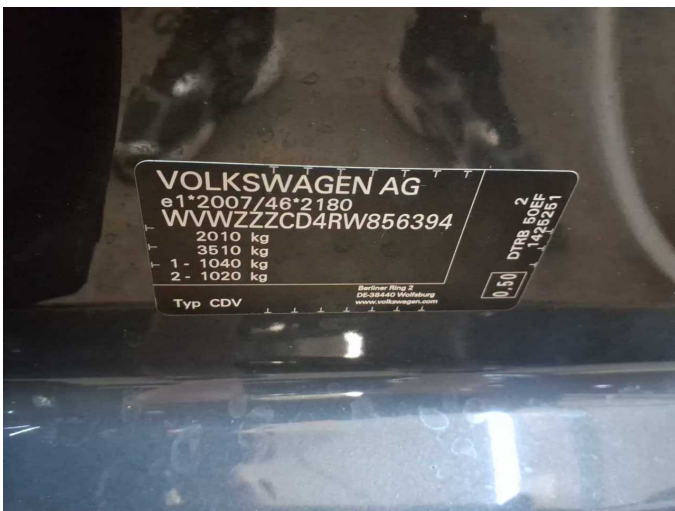


Figure 11: VIN



Figure 12: Mounted tyres



Figure 13: Documents



Figure 14: Documents



Figure 15: Additional tyres



Figure 16: Navigation

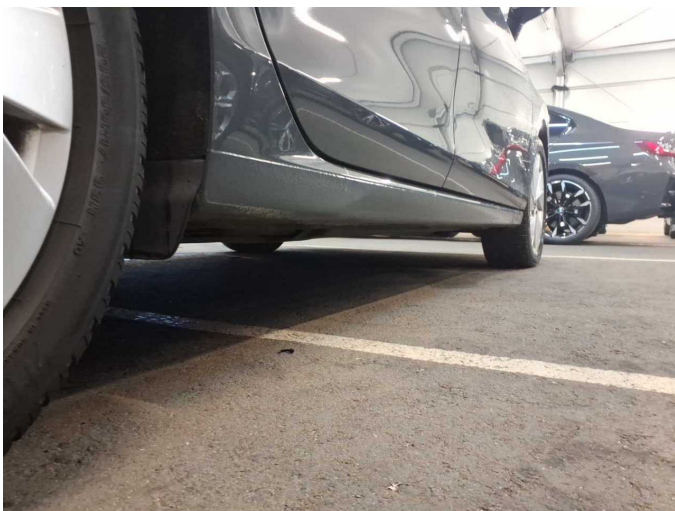


Figure 17: Misc.



Figure 18: Misc.



Figure 19: Misc.



Figure 20: Misc.



Figure 21: Misc.



Figure 22: Misc.



Figure 23: Misc.

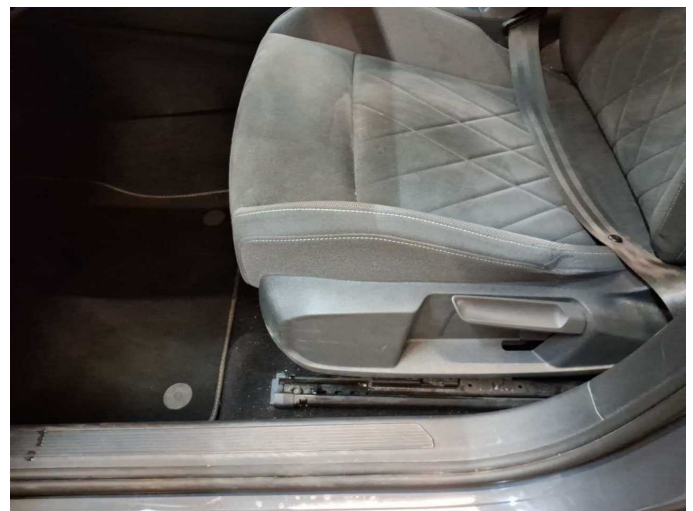


Figure 24: Misc.



Figure 25: Misc.



Figure 26: Misc.

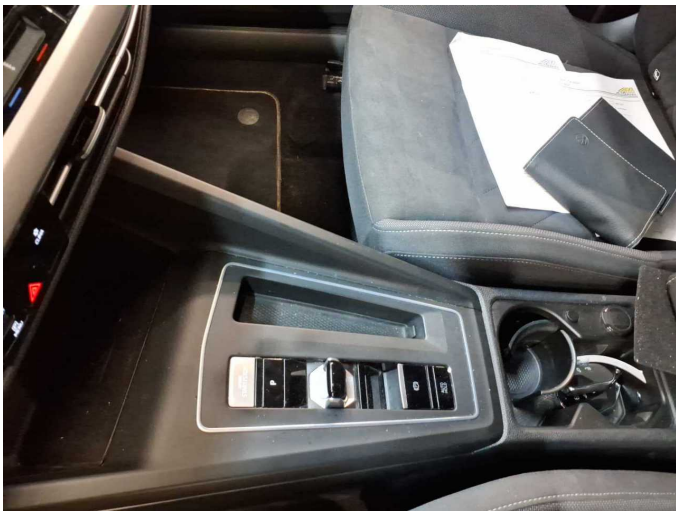


Figure 27: Misc.



Figure 28: Misc.

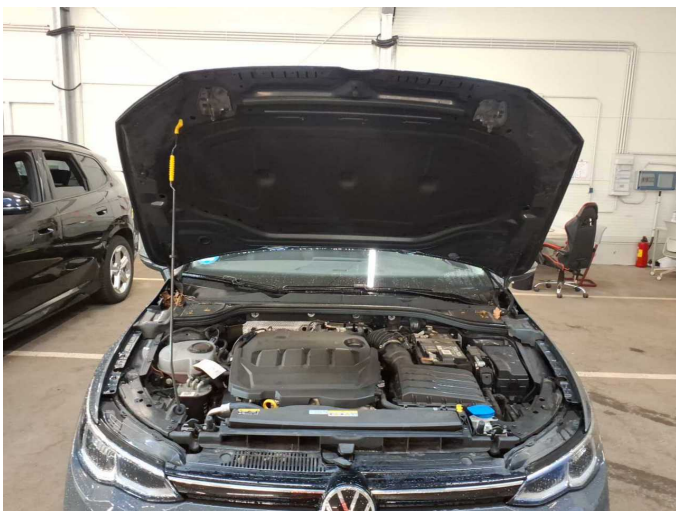


Figure 29: Misc.



Figure 30: Misc.



Figure 31: Misc.

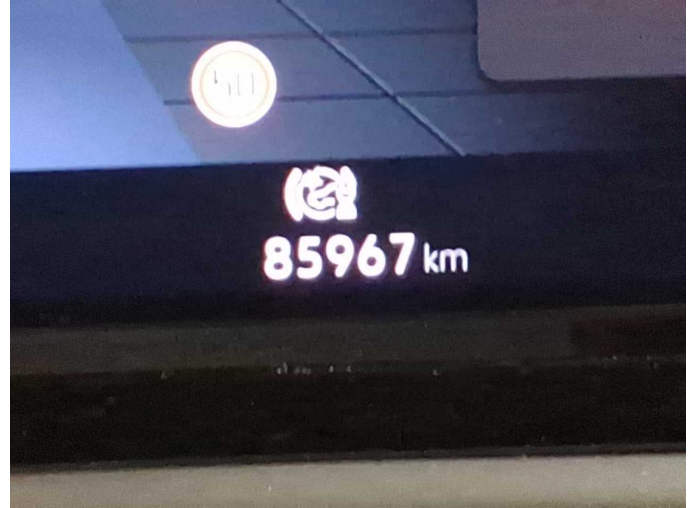
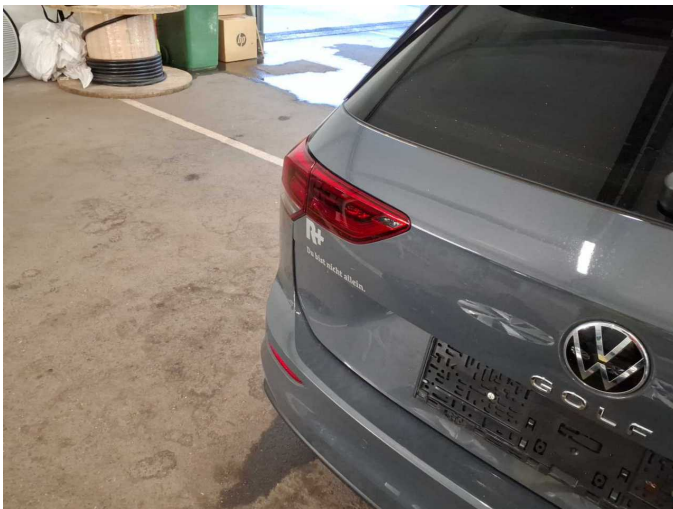


Figure 32: Misc.



Damage 2: Boot lid / rear door: Boot lid - Glued / labelled - De-glug / neutralise



Damage 3: Wheel / tyres: Tyre - rear left side - Does not meet the leasing specifications - Replace



Damage 3: Wheel / tyres: Tyre - rear left side - Does not meet the leasing specifications - Replace



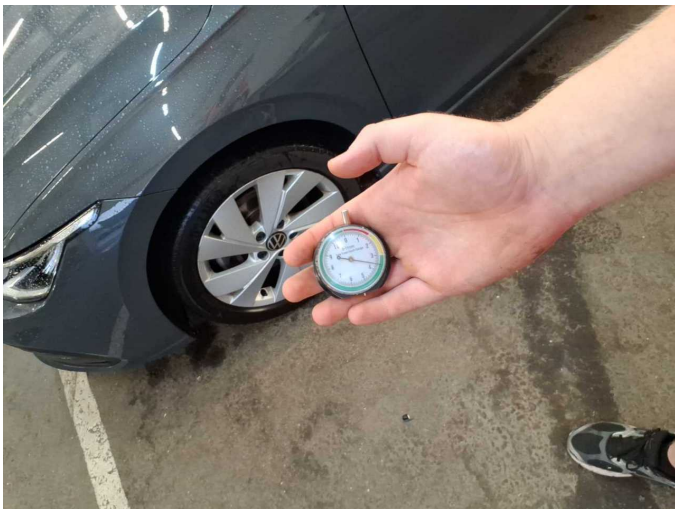
Damage 4: Wheel / tyres: Tyre - rear right side - Does not meet the leasing specifications - Replace



Damage 4: Wheel / tyres: Tyre - rear right side - Does not meet the leasing specifications - Replace



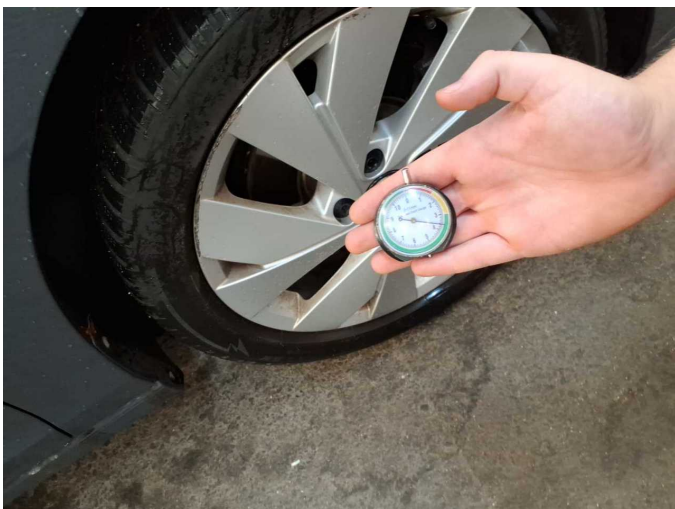
Damage 5: Wheel / tyres: Tyre - front left side - Does not meet the leasing specifications - Replace



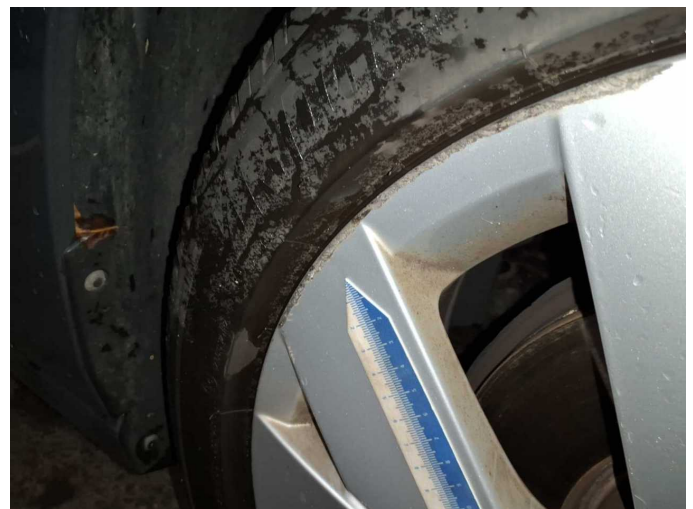
Damage 5: Wheel / tyres: Tyre - front left side - Does not meet the leasing specifications - Replace



Damage 6: Wheel / tyres: Tyre - front right side - Does not meet the leasing specifications - Replace



Damage 6: Wheel / tyres: Tyre - front right side - Does not meet the leasing specifications - Replace



Damage 7: Wheel / tyres: Alloy rim - front right side - Scratched - Loss in value



Damage 7: Wheel / tyres: Alloy rim - front right side - Scratched - Loss in value



Damage 8: Boot lid / rear door: Boot lid - Dent / paintcoat damage - Repair and paint



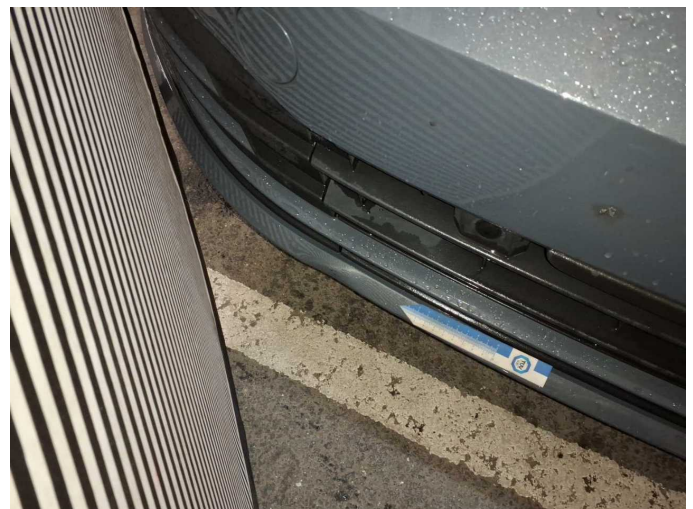
Damage 8: Boot lid / rear door: Boot lid - Dent / paintcoat damage - Repair and paint



Damage 8: Boot lid / rear door: Boot lid - Dent / paintcoat damage - Repair and paint



Damage 9: Front bumper: Front bumper - Deformed - Replace



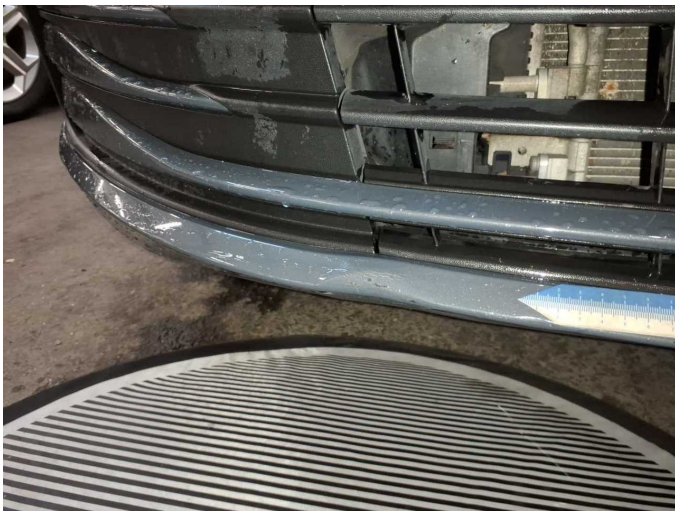
Damage 9: Front bumper: Front bumper - Deformed - Replace



Damage 9: Front bumper: Front bumper - Deformed - Replace



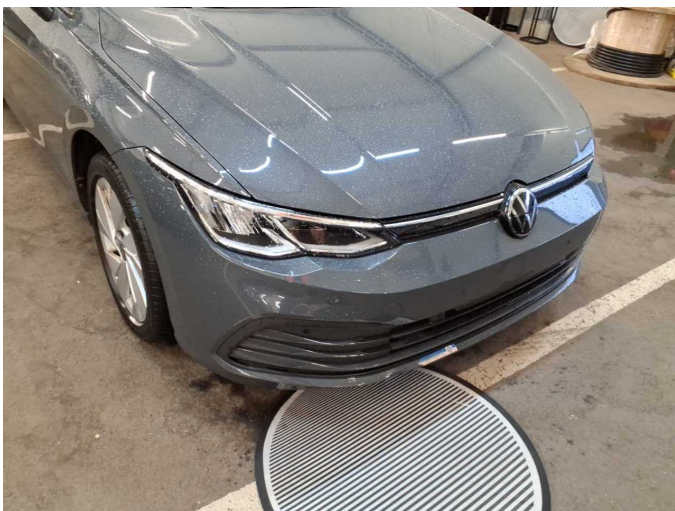
Damage 9: Front bumper: Front bumper - Deformed - Replace



Damage 9: Front bumper: Front bumper - Deformed - Replace



Damage 9: Front bumper: Front bumper - Deformed - Replace



Damage 9: Front bumper: Front bumper - Deformed - Replace



Missing part 1: Equipment: Tirefit complete - Missing - Replace



Missing part 1: Equipment: Tirefit complete - Missing - Replace



Accident 1: Side - left



Accident 1: Side - left



Accident 1: Side - left



Accident 1: Side - left



Accident 1: Side - left



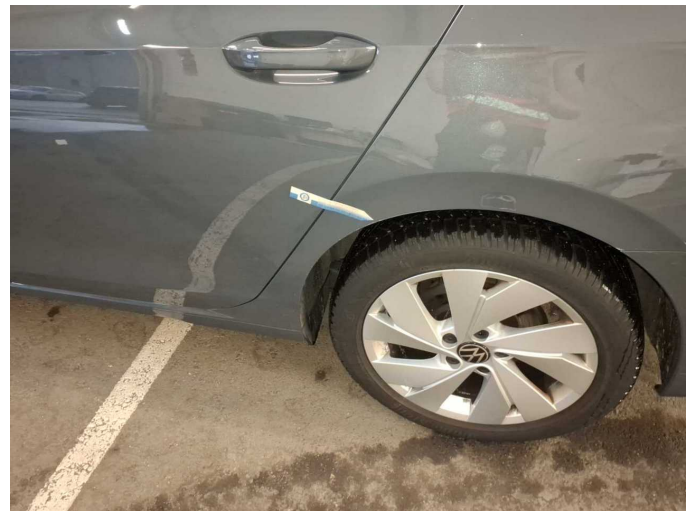
Accident 1: Side - left



Accident 1: Side - left



Accident 1: Side - left



Accident 1: Side - left



Accident 1: Side - left



Accident 1: Side - left



Accident 1: Side - left



Wartungshistorie

(gemäß Auftraggeber Informationen)

Fahrgestellnummer: WVVZZZCD4RW856394

Hersteller / Modell: VOLKSWAGEN VW Golf Variant 2.0 TDI SCR DSG Life

Datum	KM-Stand	Beschreibung
10.04.2026	81.260	Wartung Sonstiges
17.11.2025	64.003	Motoröl b. Wartung; Ölfilter ern; Regelwartungsdienst; Wartung Sonstiges; Wartung Sonstiges
02.05.2025	41.233	Wartung Sonstiges
27.02.2025	34.787	Motoröl b. Wartung; Ölfilter ern; Regelwartungsdienst; Wartung Sonstiges