

Expertise

Protocol number: 45790962
Order No. / Reference: 26153260
Inspection date: 2 Jun 2026

Manufacturer: Mercedes-Benz

Model: 317 CDI Sprinter Standard HA 9G-TRONIC PRO

VIN: W1V3KBFZ6TP863835



Vehicle details

Manufacturer / Type / Model / Equipment

Mercedes-Benz 317 CDI Sprinter Standard HA 9G-TRONIC PRO

Vehicle Identification number W1V3KBFZ6TP863835

Mileage (Read) 9,150 km

First registration 19 Sept 2025

Number of holders 1

Power / Engine displacement 125 kw / 1,950 ccm

Fuel type / Cylinder Diesel / 4

Gearbox / Number of gears Automatic / 9

Type of drive Rear drive

Type of vehicle Van

Colour / colour code ARKTIKWEISS

Doors / Seats 4 / 3

Upholstery type Cloth

Colour of upholstery Black-Anthracite

Type of use rental car



Vehicle details

Maintenance booklet / proof	Non-existent	Next maintenance in	431 Tag(e)
Key is / should be	1 / 2	FZG documents	ZB#2 (B) was available (copy), ZB#1 (S) was not available.
		Letter No.	HP675486
Previous damage / Accident	None detectable	Repainting	None detectable
Inspection conditions	sufficient	Lifting equipment / pit	yes
Test drive	Not performed	Engine function test	Performed
Manufacturer key number/ type code number	2222 / BSU 63509		
Emission standard	EURO6;WLTP;EB;PI/CI;M, N1, N2	fine dust sticker	
Permitted total weight	3,500 kg	Empty weight	

Tyres

Mounted tyres

#	Tyre size	Type of tyre	Manufacturer	Tread depth
1)	235/65 R16 115R	All-season tyres on Steel rim with wheel cover	Falken	7mm / 7mm
2)	235/65 R16 115R	All-season tyres on Steel rim with wheel cover	Falken	6mm / 6mm

Legend: Tread depth information for the left tire is listed first, for the right tire it is listed second on the axle in the direction of travel.



Equipment

Standard equipment

- Storage compartment above windshield
- Rear towing eye
- ADAPTIVE ESP (latest generation) with load- and speed-dependent driving dynamics control
- Active Lane Keeping Assist
- Electrically adjustable and heated exterior mirrors, left and right
- Battery: fleece battery 12 V / 92 Ah
- Brake assist, active
- Brake lights, adaptive
- Roof: High roof
- Diesel particulate filter and SCR
- Tachometer
- Electrical components for trailer socket
- HVO-capable vehicle
- Generator 14 V / 250 A
- Transmission: 9G-TRONIC
- Seatbelt warning device for driver's seat
- Grab handle for entry of driver and passenger
- Main tank 93 liters
- Intelligent speed assistant
- Tempmatic controlled air conditioning
- Headrests (2), front
- Cable duct at rear portal
- Steering wheel adjustable for tilt and height
- Headlight range control
- Marker lights, side
- Navigation: Navigation pre-installation
- Package: Acoustics
- Upholstery: Cloth
- Radio: MBUX multimedia system
- Rain sensor
- Tires: Tires without specified make
- Tires: Summer tires
- Wheels: Tires 235/65 R 16 C
- Wheels: Steel rims 6.5 J x 16
- Sliding door on the right, cargo/passenger compartment
- Power steering
- Seats: Driver's seat
- Jump-start contact
- Speedometer km/h
- Blind Spot Assist
- First aid kit
- Front axle with increased load capacity
- Warning triangle
- Parking light removed
- Central locking with radio remote control
- Registration certificate, Part II
- Storage compartment under cockpit
- Axle ratio $i = 3.923$
- Passenger side airbag
- Driver's side airbag
- ATTENTION ASSIST
- Electrically folding exterior mirrors
- Outdoor temperature display
- Hill start assist
- third brake light
- COC documents
- Ceiling light in the cargo/passenger compartment
- Digital operating instructions
- Entry handle on rear right corner pillar
- Driving light assistant
- Electric window regulator for driver and passenger door
- Noise measures
- Seatbelt warning device for front passenger seat
- Grab handle for entry to the cargo area sliding door on the partition wall
- HOLD function
- Clothes hooks in the driver's cab
- Instrument cluster with color display
- Paint finish: Solid color paint
- Cable duct on side wall
- Steering wheel: Multifunction steering wheel
- Longitudinal beam reinforcement
- Mercedes-Benz emergency call system
- Without weight increase/decrease: 3,500 kg
- Breakdown management
- Radio: Digital Radio DAB
- Radio accessories: Communication module (LTE) for digital services
- Tires: Tires optimized for rolling resistance
- Tire pressure monitoring
- Wheels: Premium complete wheel protection
- Rear view camera
- Crosswind Assist
- Seats: Passenger seat, two-seater
- Start-stop function
- USB 5V socket
- Cruise control
- continuous partition wall
- Lashing eyes
- Pre-installation for Remote Services Plus
- Immobiliser
- Heat-insulating glass with band filter on the windshield
- Approval N1



Extra equipment

- Storage for smartphones including wireless charging
- PASSENGER SEAT TWO-SEATER
- Interior lining of cargo area up to roof height, washable
- Load securing: Lashing rails on the side wall to the side railing.
- Wheel arch loadable
- Seats: Driver's seat armrest
- Seats: Suspension seat comfort version, driver's seat
- Long-throw nozzles in I-panel
- Entrance rear door
- Wooden floor (cargo area)
- Hinged lid for storage compartment
- LED light strip in the cargo area
- Package: Parking package with 360° camera (Parking Assistant Rear Cross Traffic Alert Drive Away Assist)
- Seats: Driver's seat box, low
- Phone: Smartphone integration package

Brief expert findings

Documents submitted	At the time of the inspection, the vehicle registration certificate Part 2 (title) was available, but the vehicle registration certificate Part 1 (document) was not. (Copy)
VIN comparison	The vehicle identification number (VIN) was read from the vehicle and its conformity with the submitted documents was confirmed by the undersigned during the inspection.
Inspection	The inspection conditions were sufficient for the assessment of the vehicle. Lifting equipment and/or a pit were available for examining the vehicle.
Test drive	No test drive/shunting maneuver was carried out during the inspection of the vehicle.
Engine function test	An engine test run was performed.

Value reducing factors

No.	Component group	Description
1	Rear bumper	Parking sensors - right side - Malposition - Replace
2	Rear of vehicle	Foot plate - Damaged - Replace

Wear and tear

No.	Component group	Description
1	Vehicle glazing	Windscreen - Stone chips - No deduction
2	Wing mirror - right side	Mirror housing - Scratch(es) - No deduction
3	Door - front right side	Door edge - Scratch(es) - No deduction
4	Interior	Separation net - Scratch(es) - No deduction
5	Body	D-pillar - right side - Scratch(es) - No deduction
6	Sliding door, right	Sliding door - dent(s) - No deduction

The vehicle shows signs of wear and tear commensurate with its age and use.

Missing parts

Description

Equipment - Vehicle key (1 Schlüssel vorhanden)

Paint coat thickness measurement

Roof	81 µm	Roof rail - left side	71 µm
Roof rail - right side	83 µm	Boot lid / rear door	82 µm
Mudguard - left side	96 µm	Mudguard - right side	88 µm
Bonnet	90 µm	Side panel - rear left side	93 µm
Side panel - rear right side	90 µm	Door - rear left side	99 µm
Door - rear right side	101 µm	Door - front left side	95 µm
Door - front right side	100 µm		



Order/Scope of Order

An order was placed to prepare a sales report for the described vehicle. This report includes the following:

- Description of key vehicle information
- Documentation of equipment features
(Delivery by third-party service providers)
- Documentation of damage, defects, missing parts
- Documentation of prior damage, unrepaired prior damage, repainting
- A brief visual or functional inspection of the equipment details, if possible.
(Functional testing of driver assistance systems is not included in the scope of services!)
- a photographic documentation of the vehicle

Basis for the order

This product is based on the guidelines for vehicle returns and valuations of light commercial vehicles published by Alphabet Fleet Management GmbH. The expert makes the specific findings in each individual case objectively, within the framework of the prescribed standards, based on their own expertise.

The vehicle inspection takes place in a fully assembled, unassembled state.

Damage or defects that can only be detected during disassembly/diagnostic work or through further investigation remain within the realm of prognostic risk. An increased risk exists due to concealed defects caused by fraudulent misrepresentation and which were not identifiable by the expert.

Damage or defects resulting from normal use or wear and tear of the vehicle will be accepted in accordance with the applicable standard.

There was no explicit identification or monetary consideration of the expected features within the product.

Features which, in their nature and extent, slightly exceed normal use but do not constitute unacceptable damage, will be documented and indicated as signs of wear, if applicable.

Damage or defects that, according to the applicable standard, can no longer be attributed to normal use or wear and tear are listed under "Value Reducing Factors" in the product description.

Depending on the product specification, a monetary ID can be provided. If this takes place, the costs can be 100% d or pro rata depending on the vehicle's age and mileage.

Previous damages

No apparent prior damage that had been repaired could be found on the vehicle.



Figure 1: Diagonal front (left)



Figure 2: Diagonal front (right)



Figure 3: Diagonal rear (left)



Figure 4: Diagonal rear (right)

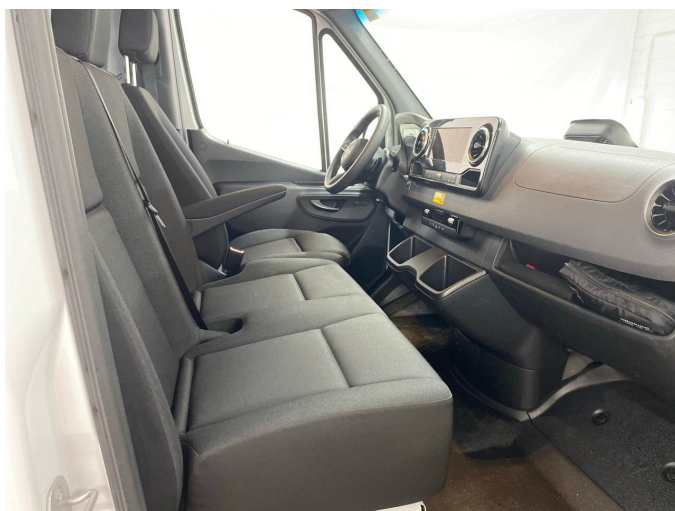


Figure 5: Interior - front



Figure 6: Interior - rear



Figure 7: Instrument cluster



Figure 8: Instrument panel



Figure 9: Interior 360° view

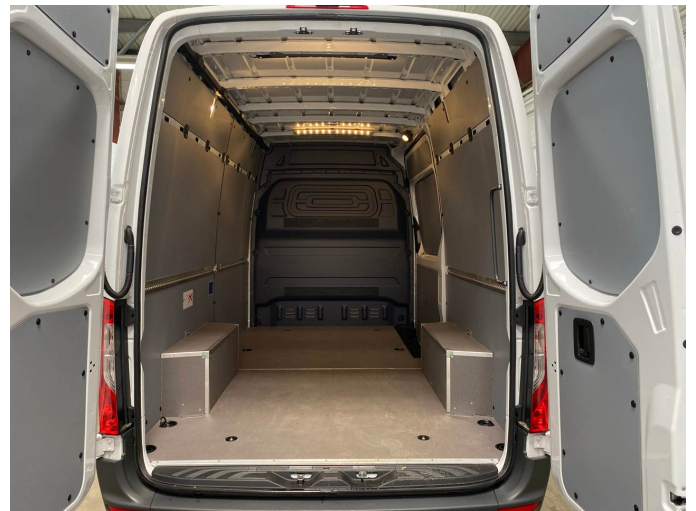


Figure 10: Cargo area



Figure 11: VIN



Figure 12: Mounted tyres



Figure 13: Documents



Figure 14: Misc.



Figure 15: Misc.



Figure 16: Misc.



Figure 17: Misc.



Figure 18: Misc.



Figure 19: Misc.



Figure 20: Misc.



Figure 21: Misc.



Figure 22: Misc.



Figure 23: Misc.



Figure 24: Misc.



Figure 25: Misc.



Figure 26: Misc.



Figure 27: Misc.

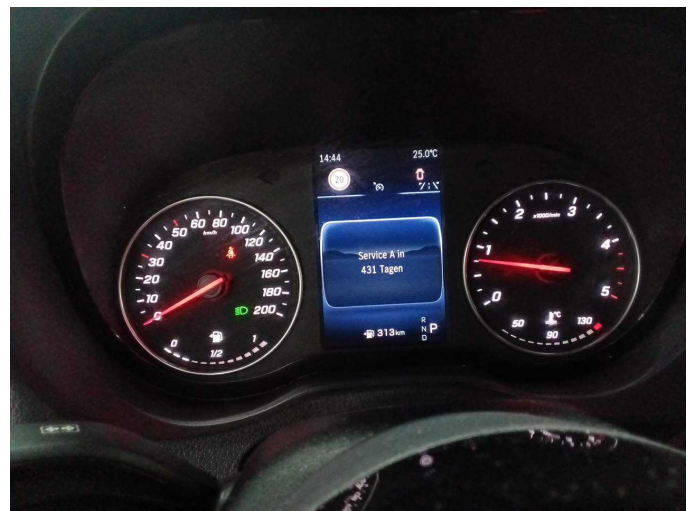


Figure 28: Misc.



Figure 29: Misc.



Figure 30: Misc.



Figure 31: Misc.



Figure 32: Misc.



Figure 33: Misc.



Figure 34: Misc.



Damage 1: Rear bumper: Parking sensors - right side - Malposition - Replace



Damage 1: Rear bumper: Parking sensors - right side - Malposition - Replace



Damage 2: Rear of vehicle: Foot plate - Damaged - Replace



Damage 2: Rear of vehicle: Foot plate - Damaged - Replace



Damage 2: Rear of vehicle: Foot plate - Damaged - Replace



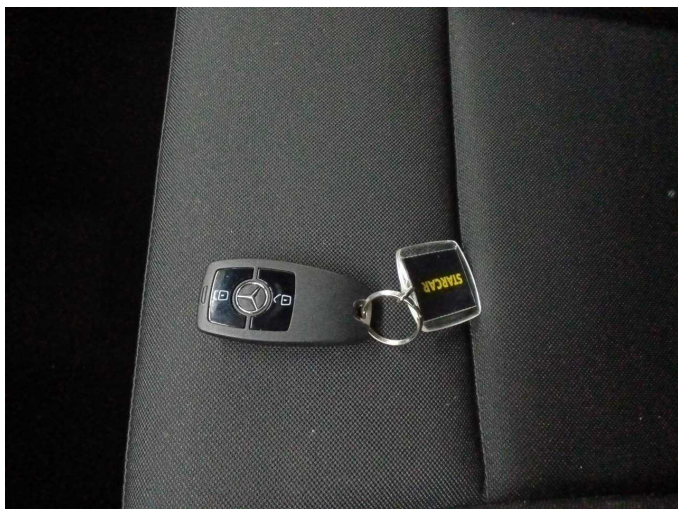
Damage 2: Rear of vehicle: Foot plate - Damaged - Replace



Wear and tear 6: Sliding door, right: Sliding door - dent(s) - No deduction



Wear and tear 6: Sliding door, right: Sliding door - dent(s) - No deduction



Missing part 1: Equipment: Vehicle key (1 Schlüssel vorhanden) -
Missing - Perform