

## Expertise

Protocol number: 46130872  
Order No. / Reference: 26430796  
Inspection date: 18 Jun 2026

Manufacturer: Opel

Model: Insignia Sports Tourer 2.0 Diesel Aut. Business Edition

VIN: W0VZM8EP0M1026054



### Vehicle details

#### Manufacturer / Type / Model / Equipment

Opel Insignia Sports Tourer 2.0 Diesel Aut. Business Edition

**Vehicle Identification number** W0VZM8EP0M1026054

**Mileage (Read)** 99,723 km

**First registration** 27 Sept 2021

**Number of holders** 1

**Power / Engine displacement** 128 kw / 1,955 ccm

**Fuel type / Cylinder** Diesel / 4

**Gearbox / Number of gears** Automatic / 8

**Type of drive** Front drive

**Type of vehicle** Station wagon

**Colour / colour code** Argonsilber Metallic

**Doors / Seats** 5 / 5

**Upholstery type** Cloth

**Colour of upholstery** Black

**readiness to drive** Not roadworthy /  
moveable



## Vehicle details

|  |                              |                                |  |
|--|------------------------------|--------------------------------|--|
| <b>Maintenance booklet / proof</b>               | digital proof / complete     | <b>Next maintenance in</b>     | 46 %   |
| <b>Last service on / at</b>                      | 12/2025 at 90,454 km         |                                |  |
| <b>Key is / should be</b>                        | 3 / 3                        | <b>FZG documents</b>           | ZB#2 (B) was available (copy), ZB#1 (S) was not available. |
|  |                              | <b>Letter No.</b>              | GA253101   |
| <b>Previous damage / Accident</b>                | None detectable              | <b>Repainting</b>              | None detectable  |
| <b>Inspection conditions</b>                     | sufficient                   | <b>Lifting equipment / pit</b> | No   |
| <b>Test drive</b>                                | Not performed                | <b>Engine function test</b>    | With complaint   |
| <b>readiness to drive</b>                        | Not roadworthy / moveable    |                                |  |
| <b>Manufacturer key number/ type code number</b> | 1844 / AMC 00210             |                                |  |
| <b>Emission standard</b>                         | EURO6;WLTP;AP;PI/CI; M, N1 I | <b>fine dust sticker</b>       |  |
| <b>Permitted total weight</b>                    | 2,215 kg                     | <b>Empty weight</b>            |  |

## Tyres

### Mounted tyres

| #  | Tyre size       | Type of tyre                | Manufacturer | Tread depth |
|----|-----------------|-----------------------------|--------------|-------------|
| 1) | 225/55 R17 101V | Winter tyres on Light alloy | Pirelli      | 6mm / 6mm   |
| 2) | 225/55 R17 101V | Winter tyres on Light alloy | Pirelli      | 5mm / 5mm   |

### Additional tyres

| #  | Tyre size      | Type of tyre                | Manufacturer | Tread depth |
|----|----------------|-----------------------------|--------------|-------------|
| 1) | 225/55 R17 97W | Summer tyres on Light alloy | Bridgestone  | 4mm / 4mm   |
| 2) | 225/55 R17 97W | Summer tyres on Light alloy | Bridgestone  | 5mm / 5mm   |

### Replacement

| Typ     | Tyre size | Type of tyre            | Manufacturer | Tread depth |
|---------|-----------|-------------------------|--------------|-------------|
| Tirefit |           | Expiration date 09/2026 |              |             |

**Legend: Tread depth information for the left tire is listed first, for the right tire it is listed second on the axle in the direction of travel.**

TÜV SÜD Auto Partner GmbH  
Wiesenring 2  
04159 Leipzig

Inspection location  
ARS Altmann AG Automobillogistik  
Römerstraße 3  
64560 Riedstadt



## Equipment



## Standard equipment

- Storage compartments (storage compartment in the center console, pockets in the front doors suitable for 1.5-liter beverage bottles, pockets in the rear doors suitable for 1-liter beverage bottles, cup holder in the center console, illuminated glove compartment)
- Electrically adjustable and heated exterior mirrors for driver and passenger side (manually foldable)
- third brake light
- Diesel particulate filter
- Electronic brake force distribution (EBD)
- Driver information display, 3.5"
- Front collision warning system with pedestrian detection and automatic emergency braking
- Luggage compartment cover (extendable with comfort operation)
- rear window wiper
- Automatic climate control, two zones (with separate temperature control for driver and front passenger, including: - recirculation mode, manual - particle/activated carbon filter - automatic air distribution - sun position sensor - humidity sensor)
- Steering column adjustable for height and reach
- Illuminated makeup mirrors in both sun visors
- Electric parking brake (including 12-volt socket)
- Upholstery: Billy fabric, black
- Quickheat rapid heating system
- Radio: Multimedia navigation system with 7" color touchscreen display (Multimedia Radio: - Bluetooth audio streaming - Hands-free calling via Bluetooth interface - Smartphone integration via Apple CarPlay and Android Auto - FM/AM - 2 USB ports and Aux-in - Steering wheel controls - 3.5" driver information display Navigation system: - with integrated memory - Road map for over 30 European countries - Map display in 2D and 3D - Dynamic route guidance via map and/or arrow display and voice prompts - Dynamic destination guidance via extended TMCpro)
- Safety net (for mounting behind the 1st or 2nd row of seats - pre-installation for safety net attachment for 1st and 2nd row of seats)
- Seats: Ergonomic active seat (AGR) driver (length, height and backrest angle manually adjustable - seat tilt electrically adjustable - lumbar support electropneumatically adjustable in height and length - extendable thigh support, manually adjustable - headrest, height and tilt adjustable)
- Start/Stop system (reinforced starter, high-performance battery, brake energy recuperation, switch to deactivate the start/stop function)
- Traction Control (TC) Plus (traction control with engine and brake intervention)
- Pre-installation for child seat mounting system "ISOFIX" (rear)
- Immobiliser
- Thermal insulation glazing, green tinted
- Central locking with remote control (and interior switches)
- Second folding ignition key
- Airbag: Front airbags (multi-stage) and side airbags, driver and front passenger (front and side airbags, front passenger, deactivatable)
- Airbag: Front and rear outer head airbags
- Anti-lock braking system (ABS) (with cornering brake control (CBC) and brake assist)
- Hill Start Assist
- black roof rails
- Tachometer
- Electronic Stability Program (ESP Plus)
- Electric windows front and rear (with one-touch function and anti-pinch protection)
- Pedestrian protection including active hood
- Speed controller
- Transmission: 8-speed automatic transmission
- Child safety lock in the rear doors, manual
- Front headrests (height adjustable)
- Rear headrests (3 pieces) (height adjustable)
- LED headlights (automatic headlight range control)
- LED fog lights
- LED daytime running lights including LED indicators, front and LED taillights
- Center armrest, front
- Parkpilot, front and rear parking aid (with acoustic warning signal when parking forwards and backwards)
- Radio: Digital radio reception DAB+
- Tire repair kit (including tire sealant and 12-volt compressor (without jack))
- Tire pressure display (with tire pressure warning - direct system with automatic calibration after wheel change)
- Wheels: Alloy wheels 7.5 J x 17 in 5 twin-spoke design (tires 215/55 R 17)
- Rear seat backrest folds forward in a 60:40 split
- Power steering (speed-dependent)
- Seat belts: Three-point seat belts in all seats (belt force limiter and belt tensioner in the front and on the outer rear seats - warning tone and light for unfastened seat belts in all seats)
- Visibility equipment (rain sensor, front interior mirror, automatically dimming, automatic dimming headlights with tunnel detection, high beam assist)
- Lane Keeping Assist (warning in case of unintentional lane departure (between 60 km/h and 180 km/h) via a warning light in the driver information display. The Lane Keeping Assist also alerts the driver by gently counter-steering, but does not continuously steer the vehicle.)
- Bumpers painted in body color



- Traffic sign assistant (recognition of speed limits, no-overtaking zones and their cancellation, additional information signs (e.g., for wet conditions, slippery surfaces, left/right directions) on standard traffic signs, beginning and end of motorways, expressways and traffic-calmed areas, display of the recognized sign in the driver information display (depending on traffic sign quality, visibility and weather conditions).)

### Extra equipment

- 3. Key
- Paint finish: Metallic
- Swiveling trailer hitch (including trailer stability program)
- Package: Winter 1 (AGR, driver) (Seat heating, multi-stage, driver and front passenger - Heated leather steering wheel - Ergonomic active seat (AGR), driver (length, height and backrest angle manually adjustable, seat angle electrically adjustable, lumbar support electropneumatically adjustable in height and length, extendable thigh support manually, headrest height and tilt adjustable))

### Brief expert findings

|                      |   |
|----------------------|---|
| Documents submitted  | At the time of the inspection, the vehicle registration certificate Part 2 (title) was available, but the vehicle registration certificate Part 1 (document) was not. (Copy)  |
| VIN comparison       | The vehicle identification number (VIN) was read from the vehicle and its conformity with the submitted documents was confirmed by the undersigned during the inspection.   |
| Inspection           | The inspection conditions were sufficient for the assessment of the vehicle.<br>No lifting equipment or pit was available for inspecting the vehicle. Therefore, inspection of the vehicle's underside was only possible to a limited extent. |
| Test drive           | No test drive/shunting maneuver was carried out during the inspection of the vehicle.   |
| Engine function test | An engine test run was performed, problem has been detected<br>This is due to the following reason.:<br>Bordnetzbatterie Spannung gering, Motorstart ohne ext. Stromquelle nicht möglich  |
| readiness to drive   | The vehicle was not capable of driving under its own power at the time of inspection, but can be moved on its own axle with the aid of assistance.  |

### Value reducing factors

| No. | Component group          | Description  |
|-----|--------------------------|--|
| 1   | Electrical system        | Battery (Bordnetzspannung niedrig, Bordnetzatterie laden) - Specify findings - Perform diagnosis |
| 2   | Wing mirror - right side | Cap - Scratch(es) - Smart repair   |
| 3   | Rear bumper              | Rear bumper - Scratched - Smart repair   |
| 4   | 2nd wheel set            | 1 alloy rim - Scratch(es) - Loss in value  |
| 5   | 2nd wheel set            | 1 alloy rim - Scratch(es) - Loss in value  |
| 6   | Body                     | Body - Glued / labelled - De-glue / neutralise   |

### Wear and tear

| No. | Component group | Description                               |
|-----|-----------------|---|
| 1   | Front bumper    | Front bumper - Stone chips - No deduction |
| 2   | Bonnet          | Bonnet - Stone chips - No deduction       |
| 3   | Vehicle glazing | Windscreen - Stone chips - No deduction   |
| 4   | Interior        | Interior - Soiled - No deduction          |

The vehicle shows signs of wear and tear commensurate with its age and use.



## Order/Scope of Order

An order was placed to prepare a sales report for the described vehicle. This report includes the following:

- Description of key vehicle information
- Documentation of equipment features  
*(Delivery by third-party service providers)*
- Documentation of damage, defects, missing parts
- Documentation of prior damage, unrepaired prior damage, repainting
- A brief visual or functional inspection of the equipment details, if possible.  
*(Functional testing of driver assistance systems is not included in the scope of services!)*
- a photographic documentation of the vehicle

## Basis for the order

This product is based on the guidelines for vehicle returns and valuations published by Alphabet Fleet GmbH. The expert makes the specific findings in each individual case objectively, within the framework of the prescribed standards, based on their own expertise.

The vehicle inspection takes place in a fully assembled, unassembled state.

Damage or defects that can only be detected during disassembly/diagnostic work or through further investigation remain within the realm of prognostic risk. An increased risk exists due to concealed defects caused by fraudulent misrepresentation and which were not identifiable by the expert.

Damage or defects resulting from normal use or wear and tear of the vehicle will be accepted in accordance with the applicable standard.

There was no explicit identification or monetary consideration of the expected features within the product.

Features which, in their nature and extent, slightly exceed normal use but do not constitute unacceptable damage, will be documented and indicated as signs of wear, if applicable.

Damage or defects that, according to the applicable standard, can no longer be attributed to normal use or wear and tear are listed under "Value Reducing Factors" in the product description.

Depending on the product specification, a monetary ID can be provided. If this takes place, the costs can be 100% or pro rata depending on the vehicle's age and mileage.

## Previous damages

No apparent prior damage that had been repaired could be found on the vehicle.

## Comments

- Die Unterbodenbesichtigung war nur ebenerdig & eingeschränkt möglich. Mehrkosten möglich.
- Ein Nachweis über die Zulässigkeit des montierten Radsatzes wurde nicht erbracht.
- Der angegebene Winterradsatz ist kein Bestandteil des Auslieferungsumfangs.



Figure 1: Diagonal front (left)



Figure 2: Diagonal front (right)



Figure 3: Diagonal rear (left)



Figure 4: Diagonal rear (right)



Figure 5: Interior - front



Figure 6: Interior - rear



Figure 7: Instrument cluster



Figure 8: Instrument panel



Figure 9: Interior 360° view



Figure 10: Cargo area

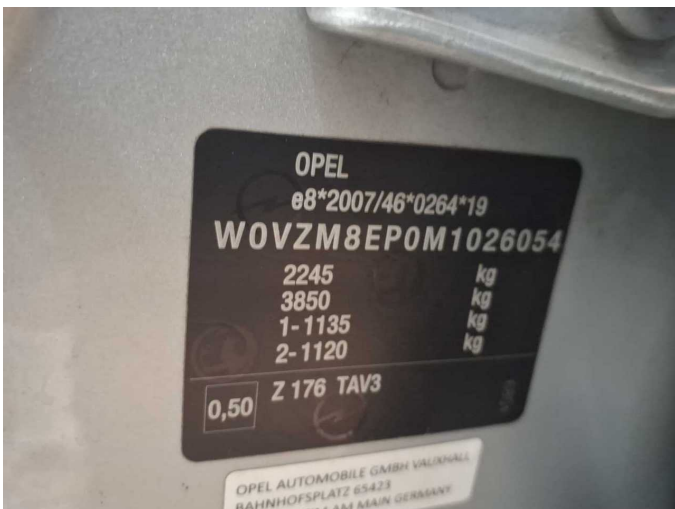


Figure 11: VIN



Figure 12: Mounted tyres



Figure 13: Documents



Figure 14: Documents



Figure 15: Additional tyres



Figure 16: Navigation



Figure 17: Misc.



Figure 18: Misc.



Figure 19: Misc.



Figure 20: Misc.



Figure 21: Misc.



Figure 22: Misc.

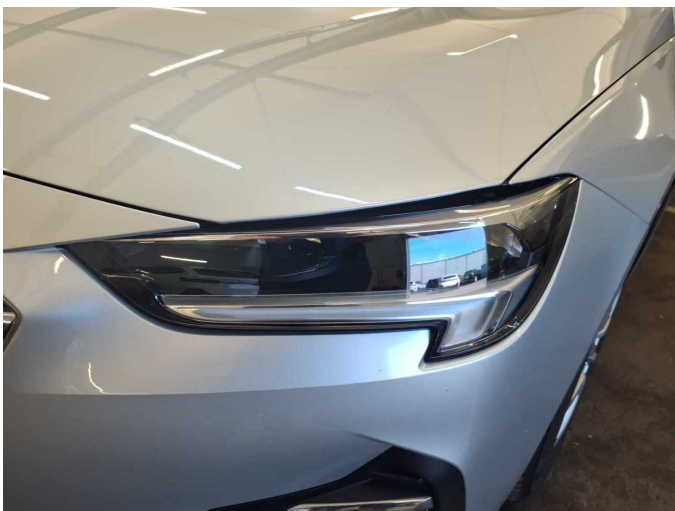


Figure 23: Misc.

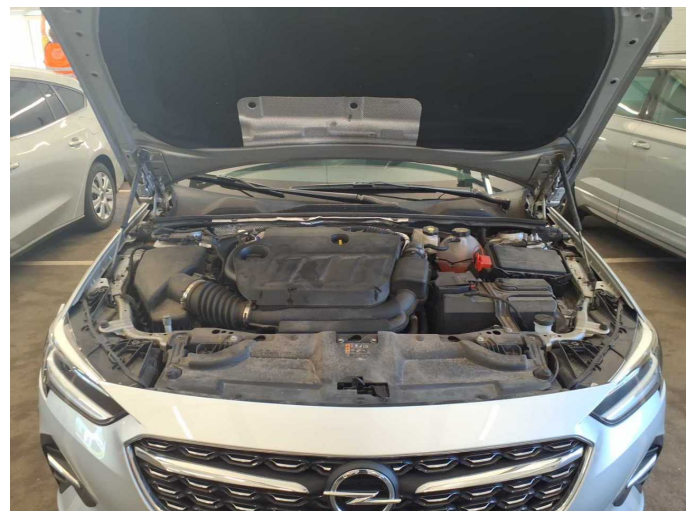


Figure 24: Misc.



Figure 25: Misc.



Figure 26: Misc.



Figure 27: Misc.



Figure 28: Misc.

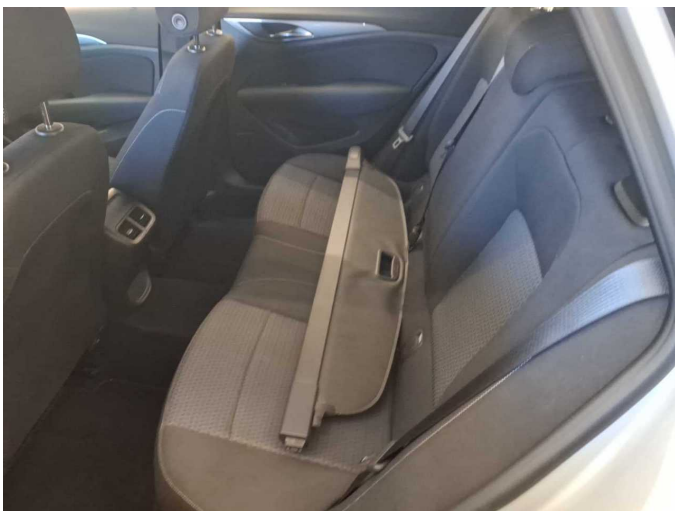


Figure 29: Misc.



Figure 30: Misc.



Figure 31: Misc.



Damage 2: Wing mirror - right side: Cap - Scratch(es) - Smart repair



Damage 2: Wing mirror - right side: Cap - Scratch(es) - Smart repair



Damage 3: Rear bumper: Rear bumper - Scratched - Smart repair



Damage 3: Rear bumper: Rear bumper - Scratched - Smart repair



Damage 4: 2nd wheel set: 1 alloy rim - Scratch(es) - Loss in value



**Damage 4:** 2nd wheel set: 1 alloy rim - Scratch(es) - Loss in value



**Damage 5:** 2nd wheel set: 1 alloy rim - Scratch(es) - Loss in value



**Damage 5:** 2nd wheel set: 1 alloy rim - Scratch(es) - Loss in value



**Damage 6:** Body: Body - Glued / labelled - De-glug / neutralise



**Damage 6:** Body: Body - Glued / labelled - De-glug / neutralise



**Damage 6:** Body: Body - Glued / labelled - De-glug / neutralise



# Wartungshistorie

(gemäß Auftraggeber Informationen)

Fahrgestellnummer: W0VZM8EP0M1026054

Hersteller / Modell: OPEL OPEL Insignia Sports Tourer 2.0 Diesel Aut. Business Edition

| Datum      | KM-Stand | Beschreibung  |
|------------|----------|---|
| 05.12.2025 | 90.454   | Bremsflüssigkeit; Bremsflüssigkeit ern; Bremsklötze hinten; Bremsklötze vorne; Bremsscheiben hinten; Bremsscheiben vorne; Kraftstofffilter ern; Luftfiltereinsatz ern; Motoröl b. Wartung; Ölfilter ern; Regelwartungsdienst; Systemtest/Eigendiagnose; Wartung Sonstiges |
| 19.11.2024 | 67.619   | AU; Motoröl b. Wartung; Ölfilter ern; Regelwartungsdienst; Wartung Sonstiges  |
| 14.12.2023 | 47.103   | Bremsflüssigkeit; Bremsflüssigkeit ern; Kraftstofffilter ern; Motoröl b. Wartung; Ölfilter ern; Regelwartungsdienst; Wartung Sonstiges  |
| 30.11.2022 | 26.700   | Motoröl b. Wartung; Ölfilter ern; Regelwartungsdienst; Wartung Sonstiges  |