

Expertise

Protocol number: 45868620
Order No. / Reference: 26153198
Inspection date: 1 Jun 2026

Manufacturer: Mercedes-Benz

Model: 317 CDI Sprinter Lang HA PRO

VIN: W1V3KCFZ7TP857760



Vehicle details

Manufacturer / Type / Model / Equipment

Mercedes-Benz 317 CDI Sprinter Lang HA PRO

Vehicle Identification number	W1V3KCFZ7TP857760
Mileage (Read)	4,184 km
First registration	9 Sept 2025
Number of holders	1
Next periodical technical inspection	09/2026 (Report not on hand)

Power / Engine displacement	125 kw / 1,950 ccm
------------------------------------	--------------------

Fuel type / Cylinder	Diesel / 4
-----------------------------	------------

Gearbox / Number of gears	Manual / 6
----------------------------------	------------

Type of drive	Rear drive
----------------------	------------

Type of vehicle	Van
------------------------	-----

Colour / colour code	LACKFARBE TIEFSCHWARZ MB 9040
-----------------------------	----------------------------------

Doors / Seats	4 / 3
----------------------	-------

Upholstery type	Cloth
------------------------	-------

Colour of upholstery	Black
-----------------------------	-------

Type of use	rental car
--------------------	------------

readiness to drive	Roadworthy
---------------------------	------------



Vehicle details

Maintenance booklet / proof	Non-existent	Next maintenance in	433 Tag(e)
Key is / should be	2 / 2	FZG documents	ZB#2 (B) was available (copy), ZB#1 (S) was not available.
		Letter No.	HP672950
Previous damage / Accident	None detectable	Repainting	None detectable
Inspection conditions	sufficient	Lifting equipment / pit	yes
Test drive	Not performed	Engine function test	Performed
readiness to drive	Roadworthy		
Manufacturer key number/ type code number	2222 / BSU 68149		
Emission standard	EURO6;WLTP;EB;PI/CI;M, N1, N2	fine dust sticker	
Permitted total weight	3,500 kg	Empty weight	

Tyres

Mounted tyres

#	Tyre size	Type of tyre	Manufacturer	Tread depth
1)	235/65 R16 115R	All-season tyres on Steel rim with wheel cover	Goodyear	8mm / 8mm
2)	235/65 R16 115R	All-season tyres on Steel rim with wheel cover	Goodyear	7mm / 7mm

Legend: Tread depth information for the left tire is listed first, for the right tire it is listed second on the axle in the direction of travel.

TÜV SÜD Auto Partner GmbH
Wiesenring 2
04159 Leipzig

Inspection location
ARS Altmann AG Automobillogistik
Lilienthalstraße 2
29693 Hodenhagen



Equipment



Standard equipment

- Storage compartment above windshield
- Rear towing eye
- ADAPTIVE ESP (latest generation) with load- and speed-dependent driving dynamics control (Anti-lock Braking System (ABS) - Traction Control System (ASR) - Electronic Brakeforce Distribution (EBD) - Hydraulic Brake Assist (BAS) - Load Adaptive Control (LAC) - Roll Over Mitigation (ROM) - Roll Movement Intervention (RMI) - Enhanced Understeering Control (EUC) - Brake Disc Wiping/Drying (BDW) - Electronic Brake Prefill (EBP) - Easy Lane Change (ELC))
- Electrically folding exterior mirrors
- Battery: fleece battery 12 V / 92 Ah
- Brake assist, active
- Brake lights, adaptive
- Roof: High roof
- Diesel particulate filter and SCR
- Digital operating instructions
- Entry handle on rear right corner pillar
- Driving light assistant
- HVO-capable vehicle
- Generator 14 V / 250 A
- Transmission: 6-speed manual ECO Gear 360
- Seatbelt warning device for driver's seat
- Grab handle for entry of driver and passenger
- Main tank 93 liters
- Clothes hooks in the driver's cab
- Instrument cluster with color display
- Paint finish: Solid color paint
- Cable duct on side wall
- Steering wheel: Multifunction steering wheel
- Longitudinal beam reinforcement
- Mercedes-Benz emergency call system
- Without weight increase/decrease: 3,500 kg
- Breakdown Management (By pressing the breakdown button or via the phone book entry in the vehicle's address book, the disabled vehicle automatically establishes a voice connection with the Customer Assistance Center (CAC). It transmits the current location and all relevant vehicle information. The CAC staff immediately inform the nearest Mercedes-Benz Service24h, which dispatches a repair service.)
- Tire pressure monitoring (on front and rear axles (wireless))
- Wheels: Steel rims 6.5 J x 16
- Sliding door on the right, cargo/passenger compartment
- Power steering
- Seats: Driver's seat
- Jump start contact (The jump start contact facilitates jump-starting the vehicle and externally charging the starter battery. The contact is located in the engine compartment on the air filter box.)
- continuous partition wall
- Lashing eyes (according to DIN 7510-3 in the floor and in the B-pillars)
- Storage compartment under cockpit
- Axle ratio $i = 3.923$
- Passenger side airbag
- Driver's side airbag
- Active Lane Keeping Assist
- ATTENTION ASSIST (ATTENTION ASSIST can assist the driver on long, monotonous journeys by monitoring attention. If signs of fatigue or increasing inattention are detected, it suggests a break.)
- Electrically adjustable and heated exterior mirrors, left and right
- Outdoor temperature display
- Hill start assist
- third brake light
- COC documents
- Ceiling light in the cargo/passenger compartment (with door contact)
- Tachometer
- Electrical components for trailer socket
- Chassis stabilization level 1
- Electric window regulator for driver and passenger door
- Noise measures
- Seatbelt warning device for front passenger seat
- Grab handle for entry to the cargo area sliding door on the partition wall
- Intelligent speed assistant
- Tempmatic controlled air conditioning
- Headrests (2), front
- Cable duct at rear portal
- Steering wheel adjustable for tilt and height
- Headlight range control
- Marker lights, side
- Navigation: Navigation pre-installation
- Package: Acoustics
- Upholstery: Cloth
- Radio: Digital Radio DAB
- Radio: MBUX multimedia system
- Radio accessories: Communication module (LTE) for digital services
- Rain sensor
- Tires: Tires without specified make
- Tires: Tires optimized for rolling resistance
- Wheels: Tires 235/65 R 16 C
- Wheels: Premium complete wheel protection (3 years)
- Rear view camera
- Crosswind Assist
- Seats: Passenger seat, two-seater
- Start-stop function
- USB 5V socket
- Speedometer km/h
- Cruise control
- Blind Spot Assist
- First aid kit
- Front axle with increased load capacity



- Warning triangle
- Elimination of vehicle lowering
- Heat-insulating glass with band filter on the windshield
- Approval N1

- Pre-installation for Remote Services Plus
- Immobiliser
- Parking light removed
- Central locking with radio remote control
- Registration certificate, Part II

Extra equipment

- Towbar (for increased towing capacity 3.5t)
- Front cupholder
- Chassis for comfort and cargo protection
- Interior lining of the cargo area up to roof height, washable in conjunction with partition wall, continuous along pillar C
- LED light strip in the cargo area
- Navigation accessories: Live Traffic Information
- Crossbeam with step
- Radio: MBUX multimedia system with 10.25-inch touchscreen
- Wheel arch trim
- Tires: All-season tires
- Key: Multi-button radio remote control
- Seats: Comfort driver's seat
- Phone: Smartphone integration package
- Additional rear door locking mechanism at 90 degrees

- 13-pin trailer socket in conjunction with a 14V/250A generator
- Wooden floor (cargo area)
- Load securing: Lashing rails on the side wall to the side railing.
- Navigation (linguatron voice control, Wi-Fi hotspot, multimedia connection unit for connecting portable devices via an additional USB-C interface, center fill speaker for improved sound and voice output, improved hands-free function, dual-phone operation, digital operating instructions)
- Double-leaf rear door, opening to side wall
- Seats: Front passenger seat, two-seater, in combination with Caluma fabric or ARTICO black man-made leather
- Traffic Sign Assistant

Brief expert findings

Documents submitted	At the time of the inspection, the vehicle registration certificate Part 2 (title) was available, but the vehicle registration certificate Part 1 (document) was not. (Copy)
VIN comparison	The vehicle identification number (VIN) was read from the vehicle and its conformity with the submitted documents was confirmed by the undersigned during the inspection.
Inspection	The inspection conditions were sufficient for the assessment of the vehicle. Lifting equipment and/or a pit were available for examining the vehicle.
Test drive	No test drive/shunting maneuver was carried out during the inspection of the vehicle.
Engine function test	An engine test run was performed.
readiness to drive	The vehicle was roadworthy at the time of inspection.

Value reducing factors

No.	Component group	Description
1	Misc.	Inspection / maintenance - No evidence - No deduction
2	Boot lid / rear door	Boot lid - Glued / labelled - Remove
3	Rear bumper	Rear bumper - Scratched - Loss in value
4	Door - front left side	Door - Scratch(es) - Smart repair
5	Body	B-pillar - right side - Scratch(es) - Smart repair
6	Door - front right side	Door edge - Scratch(es) - Smart repair
7	Body	D-pillar - left side - Dent / paintcoat damage - Smart repair
8	Side panel - rear right side	Interior trim - Broken / torn - Replace
9	Side panel - rear left side	Interior trim - Broken / torn - Replace
10	Side panel - rear left side	Side panel - Dent / paintcoat damage - repair according to calculation



Wear and tear

No.	Component group	Description
1	Trim / covers	Boot lid - interior trim - Scratch(es) - No deduction
2	Trim / covers	Boot lining - Scratched - No deduction
3	Rear of vehicle	Boot floor - Scratch(es) - No deduction
4	Bonnet	Bonnet - Stone chips - No deduction
5	Interior	Separation net - Scratch(es) - No deduction

The vehicle shows signs of wear and tear commensurate with its age and use.

Missing parts

Description

Roof - Stub aerial

Order/Scope of Order

An order was placed to prepare a sales report for the described vehicle. This report includes the following:

- Description of key vehicle information
- Documentation of equipment features
(*Delivery by third-party service providers*)
- Documentation of damage, defects, missing parts
- Documentation of prior damage, unrepaired prior damage, repainting
- A brief visual or functional inspection of the equipment details, if possible.
(*Functional testing of driver assistance systems is not included in the scope of services!*)
- a photographic documentation of the vehicle

Basis for the order

This product is based on the guidelines for vehicle returns and valuations of light commercial vehicles published by Alphabet Fleet Management GmbH. The expert makes the specific findings in each individual case objectively, within the framework of the prescribed standards, based on their own expertise.

The vehicle inspection takes place in a fully assembled, unassembled state.

Damage or defects that can only be detected during disassembly/diagnostic work or through further investigation remain within the realm of prognostic risk. An increased risk exists due to concealed defects caused by fraudulent misrepresentation and which were not identifiable by the expert.

Damage or defects resulting from normal use or wear and tear of the vehicle will be accepted in accordance with the applicable standard.

There was no explicit identification or monetary consideration of the expected features within the product.

Features which, in their nature and extent, slightly exceed normal use but do not constitute unacceptable damage, will be documented and indicated as signs of wear, if applicable.

Damage or defects that, according to the applicable standard, can no longer be attributed to normal use or wear and tear are listed under "Value Reducing Factors" in the product description.

Depending on the product specification, a monetary ID can be provided. If this takes place, the costs can be 100% d or pro rata depending on the vehicle's age and mileage.

Previous damages

No apparent prior damage that had been repaired could be found on the vehicle.



Figure 1: Diagonal front (left)



Figure 2: Diagonal front (right)



Figure 3: Diagonal rear (left)



Figure 4: Diagonal rear (right)

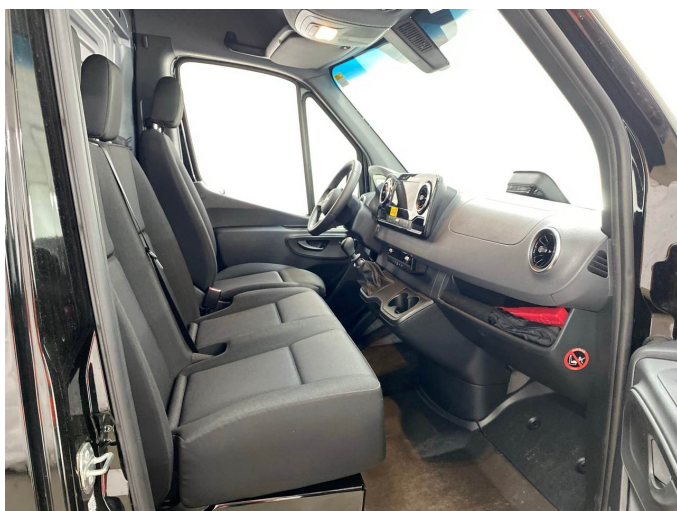


Figure 5: Interior - front



Figure 6: Interior - rear



Figure 7: Instrument cluster



Figure 8: Instrument panel



Figure 9: Interior 360° view

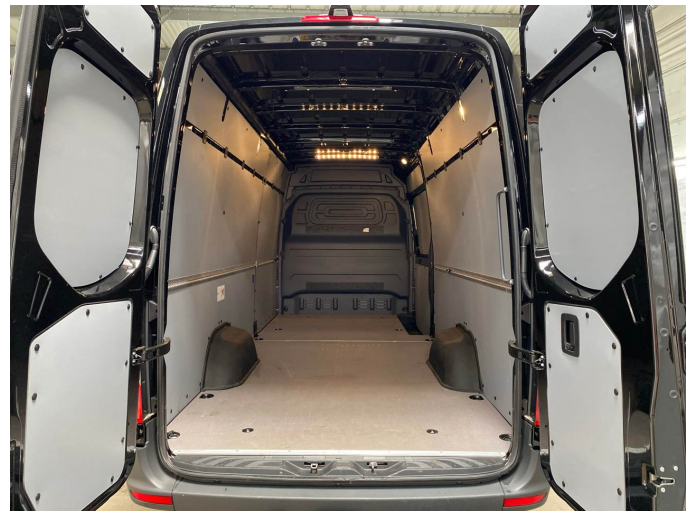


Figure 10: Cargo area



Figure 11: VIN



Figure 12: Mounted tyres



Figure 13: Documents



Figure 14: Misc.



Figure 15: Misc.



Figure 16: Misc.



Figure 17: Misc.



Figure 18: Misc.



Figure 19: Misc.



Figure 20: Misc.



Figure 21: Misc.



Figure 22: Misc.



Figure 23: Misc.



Figure 24: Misc.



Figure 25: Misc.



Figure 26: Misc.



Figure 27: Misc.



Figure 28: Misc.



Figure 29: Misc.

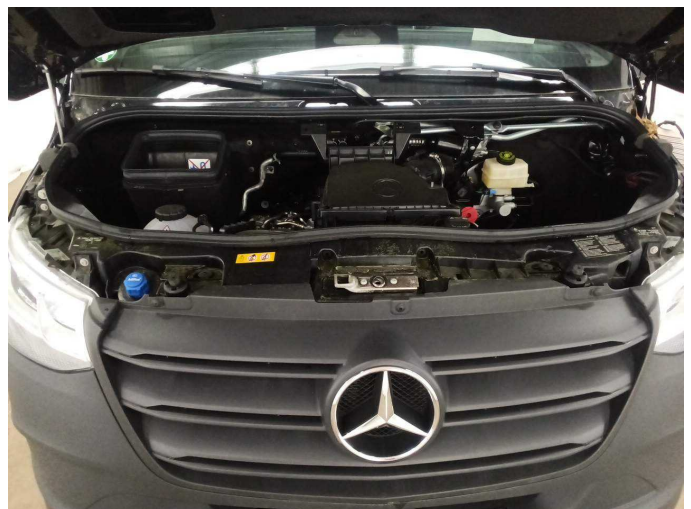


Figure 30: Misc.



Figure 31: Misc.



Figure 32: Misc.



Figure 33: Misc.



Figure 34: Misc.

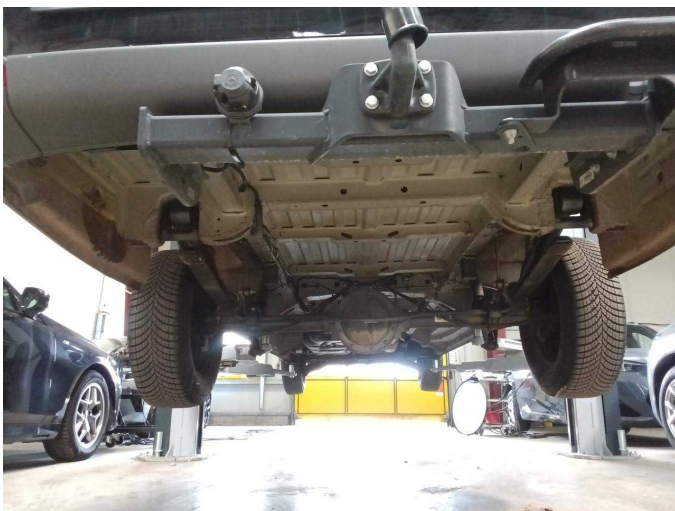


Figure 35: Misc.



Damage 2: Boot lid / rear door: Boot lid - Glued / labelled - Remove



Damage 2: Boot lid / rear door: Boot lid - Glued / labelled - Remove



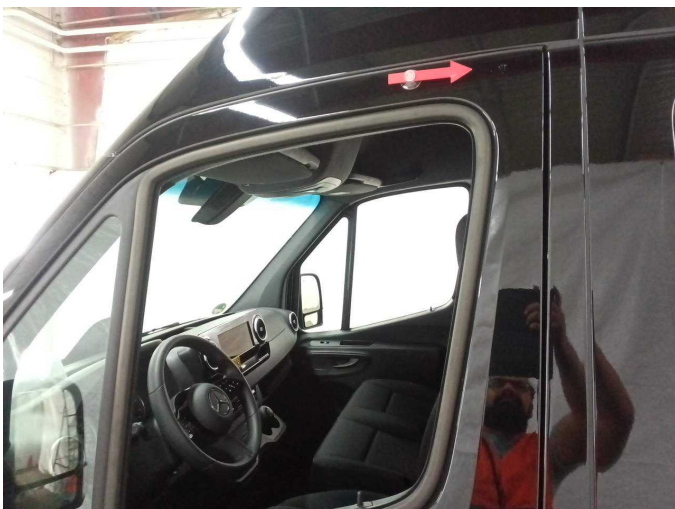
Damage 2: Boot lid / rear door: Boot lid - Glued / labelled - Remove



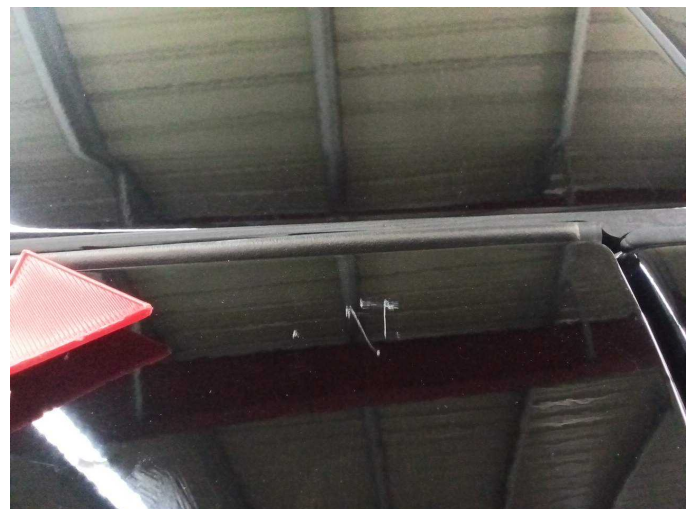
Damage 3: Rear bumper: Rear bumper - Scratched - Loss in value



Damage 3: Rear bumper: Rear bumper - Scratched - Loss in value



Damage 4: Door - front left side: Door - Scratch(es) - Smart repair



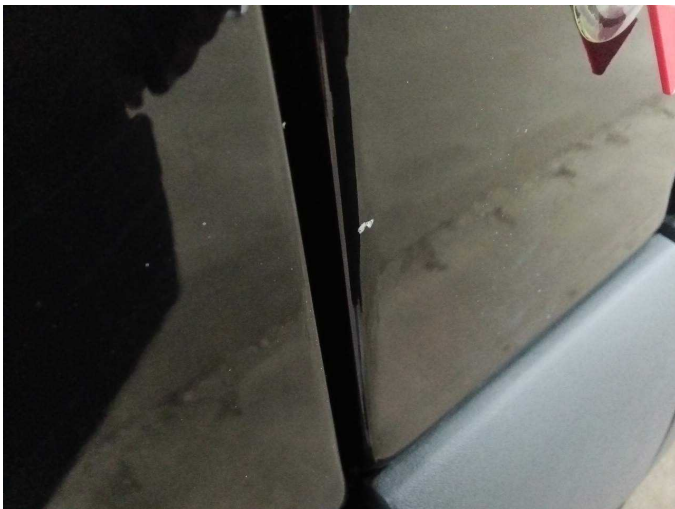
Damage 4: Door - front left side: Door - Scratch(es) - Smart repair



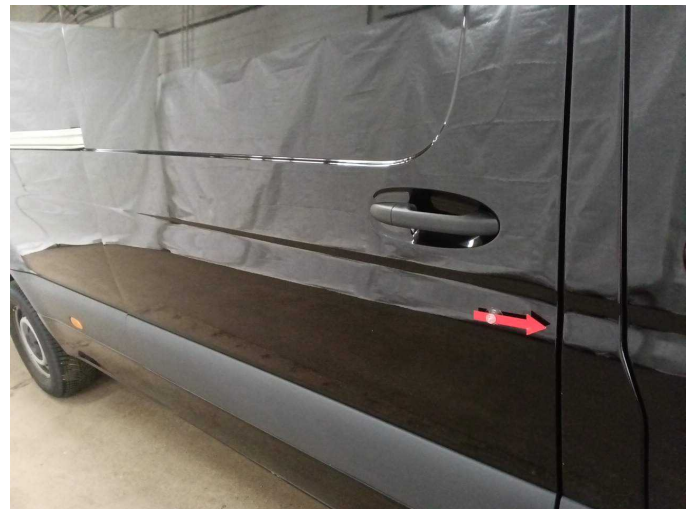
Damage 5: Body: B-pillar - right side - Scratch(es) - Smart repair



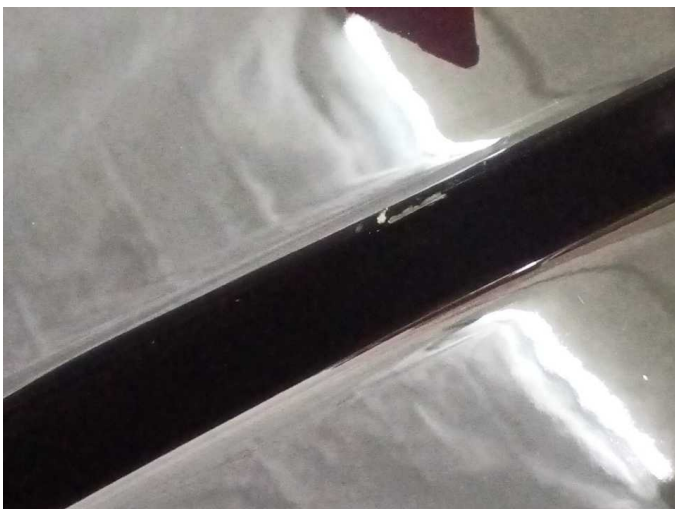
Damage 5: Body: B-pillar - right side - Scratch(es) - Smart repair



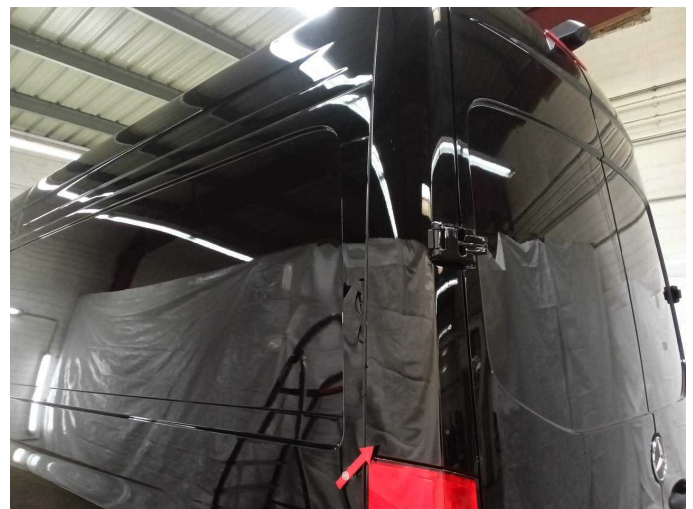
Damage 5: Body: B-pillar - right side - Scratch(es) - Smart repair



Damage 6: Door - front right side: Door edge - Scratch(es) - Smart repair



Damage 6: Door - front right side: Door edge - Scratch(es) - Smart repair



Damage 7: Body: D-pillar - left side - Dent / paintcoat damage - Smart repair



Damage 7: Body: D-pillar - left side - Dent / paintcoat damage - Smart repair



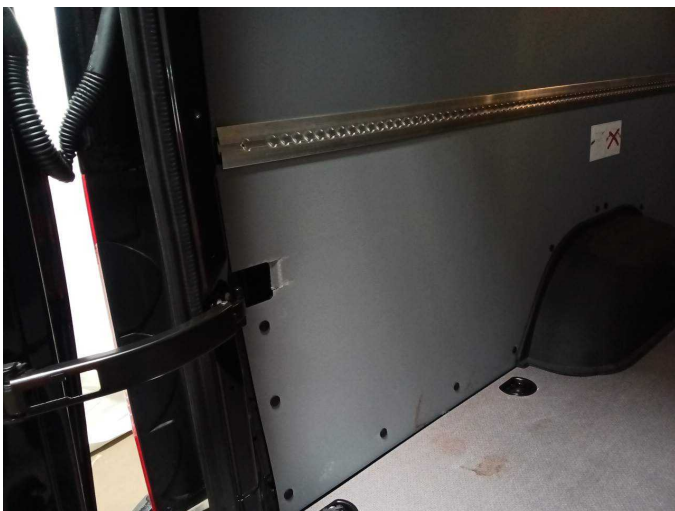
Damage 7: Body: D-pillar - left side - Dent / paintcoat damage - Smart repair



Damage 8: Side panel - rear right side: Interior trim - Broken / torn - Replace



Damage 8: Side panel - rear right side: Interior trim - Broken / torn - Replace



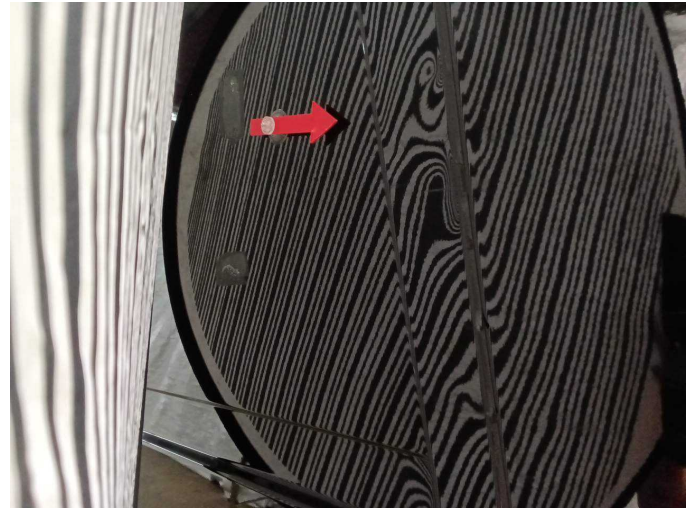
Damage 9: Side panel - rear left side: Interior trim - Broken / torn - Replace



Damage 9: Side panel - rear left side: Interior trim - Broken / torn - Replace



Damage 10: Side panel - rear left side: Side panel - Dent / paintcoat damage - repair according to calculation



Damage 10: Side panel - rear left side: Side panel - Dent / paintcoat damage - repair according to calculation



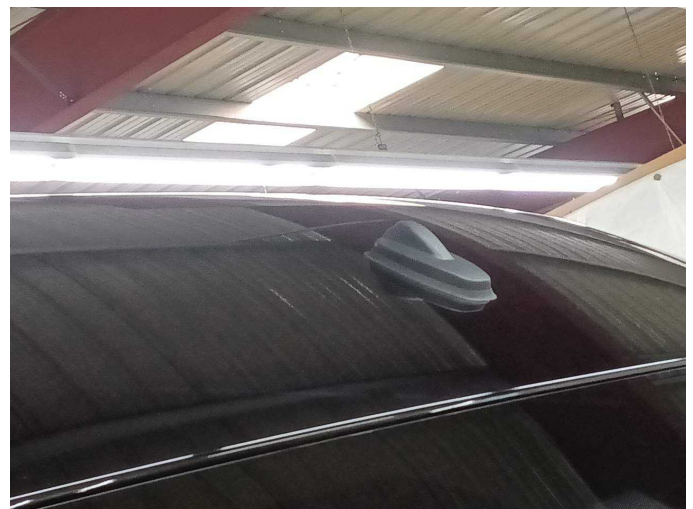
Damage 10: Side panel - rear left side: Side panel - Dent / paintcoat damage - repair according to calculation



Damage 10: Side panel - rear left side: Side panel - Dent / paintcoat damage - repair according to calculation



Damage 10: Side panel - rear left side: Side panel - Dent / paintcoat damage - repair according to calculation



Missing part 1: Roof: Stub aerial - Missing - Perform



Missing part 1: Roof: Stub aerial - Missing - Perform