

## Expertise

Protocol number: 46225364  
Order No. / Reference: 26511401  
Inspection date: 30 Jun 2026

Manufacturer: Skoda

Model: Enyaq iV 80

VIN: TMBJC9NY0PF051245



### Vehicle details

#### Manufacturer / Type / Model / Equipment

Skoda Enyaq iV 80

**Vehicle Identification number** TMBJC9NY0PF051245

**Mileage (Read)** 65,978 km

**First registration** 12 May 2023

**Number of holders** 1

**Power / Engine displacement** 70 kw /

**Fuel type / Cylinder** Electric / 0

**Gearbox / Number of gears** Direct drive / 1

**Type of drive** Rear drive

**Type of vehicle** Station wagon

**Colour / colour code** Blau Race Metallic (F5W)

**Doors / Seats** 5 / 5

**Upholstery type** Alcantara / Leather

**Colour of upholstery** Grey



Vehicle details			
<b>Maintenance booklet / proof</b>	digital proof / complete	<b>Next maintenance in</b>	319 Tag(e)
<b>Last service on / at</b>	05/2026 at 65,890 km		
<b>Key is / should be</b>	2 / 2	<b>FZG documents</b>	ZB#2 (B) was available (copy), ZB#1 (S) was not available.
		<b>Letter No.</b>	GT098924
<b>Previous damage / Accident</b>	None detectable	<b>Repainting</b>	None detectable
<b>Inspection conditions</b>	sufficient	<b>Lifting equipment / pit</b>	No
<b>Test drive</b>	Not performed	<b>Engine function test</b>	Performed
<b>Manufacturer key number/ type code number</b>	8004 / AWS 00124		
<b>Emission standard</b>	2017/1151;WLTP;reine Elektrofz	<b>fine dust sticker</b>	
<b>Permitted total weight</b>	2,657 kg	<b>Empty weight</b>	
<b>Dimensions</b>	4649 x 1879 x 1612		

## Tyres

Mounted tyres				
#	Tyre size	Type of tyre	Manufacturer	Tread depth
1)	235/55 R19 101T	Summer tyres on Light alloy	Bridgestone	4mm / 4mm
2)	255/50 R19 103T	Summer tyres on Light alloy	Bridgestone	4mm / 4mm

Additional tyres				
#	Tyre size	Type of tyre	Manufacturer	Tread depth
1)	235/55 R19 105V	Winter tyres on Light alloy	Bridgestone	5mm / 6mm
2)	255/50 R19 105V	Winter tyres on Light alloy	Bridgestone	4mm / 4mm

Replacement				
Typ	Tyre size	Type of tyre	Manufacturer	Tread depth
	Tirefit	Expiration date 03/2027		

**Legend: Tread depth information for the left tire is listed first, for the right tire it is listed second on the axle in the direction of travel.**

TÜV SÜD Auto Partner GmbH  
Wiesenring 2  
04159 Leipzig

Inspection location  
ARS Altmann AG Automobillogistik  
Römerstraße 3  
64560 Riedstadt



## Equipment



## Standard equipment

- Storage compartments (Four roof grab handles, rear with coat hooks - Warning vest compartment in the doors - Storage compartments in the front door panels with 1.5l bottle holders - Storage compartments in the rear door panels - Umbrella compartments in the front doors - Ticket holder on the windshield - Ice scraper in the tailgate panel - Coat hooks on the B-pillars - Cup holder in the front center console - Storage compartments in the trunk)
- Evasive steering assist including turning assistant (The turning assistant monitors oncoming vehicles when you turn left (for left-hand drive vehicles). If there is an immediate danger, it brings the vehicle to a standstill and a warning signal sounds.)
- Design Selection Loft (seat covers in fabric/faux leather - decorative trim strips "brushed aluminum" - headliner in grey - front center armrest, including storage compartment - rear center armrest with cup holders and pass-through - floor mats - ambient lighting for front door panels, multicoloured - footwell lighting and illuminated door handle recesses - umbrella)
- Front radar assist with pedestrian and cyclist detection and city emergency braking function (The front radar assist is a safety system with collision warning: If confronted with an unavoidable collision, it brakes the vehicle to minimize the consequences. It also performs emergency braking if a pedestrian or cyclist attempts to cross the vehicle's path. The front radar assist recognizes from the way the driver moves the vehicle that they are attempting to avoid an obstacle and actively intervenes in the steering to steer around it.)
- Child safety locks on the rear doors
- Removable boot cover
- Front and rear headrests are height-adjustable.
- Charging cable for AC charging stations (Mode 3 charging cable, Type 2, 16A) (Fast charging connector (CCS / Combo 2))
- Steering wheel: Leather steering wheel with multifunction buttons
- Navigation system
- Front and rear parking sensors
- Radio: Infotainment system with capacitive 13" color display (2 x USB ports (Type-C) at the front - Digital radio reception DAB+ - Bluetooth hands-free phone system - Voice control - SmartLink (Apple CarPlay, Android Auto) - Wireless SmartLink)
- Rear view camera
- Rear seat backrest split 60:40, foldable
- Power steering
- Safety lights in the front side doors
- Seats: Front seats are height-adjustable, including manually adjustable lumbar support.
- Speed limiter
- Lane keeping assistant (Lane Assist)
- 12V socket - in the trunk
- Traffic sign recognition
- Immobiliser
- heat pump
- Airbag, center airbag front
- Airbag for driver and front passenger (passenger airbag can be deactivated)
- Airbag, front and rear head airbags
- Airbag, front side airbags
- acoustic windscreen
- Anti-lock braking system (ABS)
- Traction control (ASR)
- Electrically adjustable, heated and folding exterior mirrors, including automatic dimming.
- Outdoor temperature display
- Hill start assist
- AERO anodized roof rails
- Digital instrument cluster (Virtual Cockpit)
- Third brake light
- E-Sound (external speaker for generating a driving sound)
- Electronic parking brake including auto-hold function
- Increased battery charging power max. 125 kW
- ESC Electronic Stability Control
- Electric windows front and rear (including anti-pinch protection and child safety lock)
- Cruise control
- Transmission: 1-speed (EV)
- Tinted windows
- Heated rear window
- Rear window wiper including windshield washer system
- Automatic interior mirror dimming
- Isofix anchorage on the front passenger seat
- Isofix anchorage on the outer rear seats including top tether
- Climatronic air conditioning (2-zone) (fully automatic, separately adjustable for driver and front passenger, including odor and allergen filter)
- LED headlights with daytime running lights
- LED taillights
- Steering wheel adjustable for height and reach
- Manual headlight range adjustment
- Multi-collision brake
- Package: Chrome (chrome trim strips on the outside of the side windows - AERO anodized roof rails)
- Rain sensor and driving light assistant with coming and leaving home function
- Tire mobility kit (tire repair spray incl. compressor)
- Tire pressure monitoring
- Wheels: 19" Regulus AERO alloy wheels, anthracite polished (8Jx19, tires 235/55 R19 101T front, 255/50 R19 103T rear)
- Seat belts (Height-adjustable three-point seat belts in the front - Three three-point seat belts in the rear - Seat belt reminder indicators on the front and rear seats)



- Central locking including remote control integrated into the key (EASY START (keyless start-stop system))

- Skoda Care Connect (SOS emergency call function (eCall including automatic activation in the event of an accident with airbag deployment) - Free remote vehicle access to iV-specific functions for 10 years (iV Remote Services Basic) such as starting and stopping the charging process, creating charging plans, setting the interior climate control before starting the journey, etc. - Mobility service - Information service - Free remote vehicle access for 3 years (Remote Access) - Skoda Infotainment Online)

### Extra equipment

- Swiveling trailer hitch (including trailer stabilization)
- Luggage net partition
- Paint finish: Metallic
- Mobile charging station "iV Universal Charger" with interchangeable connection adapters
- Package: PLUS in conjunction with anti-theft alarm system (Convenience PLUS - Driving Assistance PLUS - Climate Control BASIC - Drive BASIC - Family BASIC - Light & Sight BASIC - Seat Comfort BASIC - Preparation for a trailer hitch including trailer stabilization - Anti-theft alarm system including safe system with interior monitoring and tilt sensor)

- Design Selection Lounge (seat covers in leather/artificial leather/ microfiber grey with decorative stitching in yellow - decorative strips "Anodized cross" - headliner in grey - front center armrest, including storage compartment - rear center armrest with cup holders and pass-through - floor mats - ambient lighting for instrument panel and front door trim, multicoloured - footwell lighting and illuminated door handle recesses - umbrella)
- Package: Transport (Net program in the trunk incl. charging cable bag - Variable loading floor in the trunk - Remote release of the rear seat backrests in the trunk - Cargo elements in the trunk)

### Brief expert findings

Documents submitted	At the time of the inspection, the vehicle registration certificate Part 2 (title) was available, but the vehicle registration certificate Part 1 (document) was not. (Copy)
VIN comparison	The vehicle identification number (VIN) was read from the vehicle and its conformity with the submitted documents was confirmed by the undersigned during the inspection.
Inspection	The inspection conditions were sufficient for the assessment of the vehicle. No lifting equipment or pit was available for inspecting the vehicle. Therefore, inspection of the vehicle's underside was only possible to a limited extent.
Test drive	No test drive/shunting maneuver was carried out during the inspection of the vehicle.
Engine function test	An engine test run was performed.

### Value reducing factors

No.	Component group	Description
1	Misc.	Main inspection - No evidence - No deduction
2	Interior	Interior light, rear (Innenverkleidung Kofferraum) - Broken / torn - Replace
3	Door - front left side	Door edge - Scratch(es) - Smart repair
4	Door - front right side	Door edge - Scratch(es) - Smart repair
5	Door - rear right side	Door edge - Scratch(es) - Smart repair
6	Mudguard - right side	Mudguard - right side - Dent / paintcoat damage - Smart repair
7	Wheel / tyres	Alloy rim - rear right side - Scratch(es) - Loss in value



## Order/Scope of Order

An order was placed to prepare a sales report for the described vehicle. This report includes the following:

- Description of key vehicle information
- Documentation of equipment features  
*(Delivery by third-party service providers)*
- Documentation of damage, defects, missing parts
- Documentation of prior damage, unrepaired prior damage, repainting
- A brief visual or functional inspection of the equipment details, if possible.  
*(Functional testing of driver assistance systems is not included in the scope of services!)*
- a photographic documentation of the vehicle

## Basis for the order

This product is based on the guidelines for vehicle returns and valuations published by Alphabet Fleet GmbH. The expert makes the specific findings in each individual case objectively, within the framework of the prescribed standards, based on their own expertise.

The vehicle inspection takes place in a fully assembled, unassembled state.

Damage or defects that can only be detected during disassembly/diagnostic work or through further investigation remain within the realm of prognostic risk. An increased risk exists due to concealed defects caused by fraudulent misrepresentation and which were not identifiable by the expert.

Damage or defects resulting from normal use or wear and tear of the vehicle will be accepted in accordance with the applicable standard.

There was no explicit identification or monetary consideration of the expected features within the product.

Features which, in their nature and extent, slightly exceed normal use but do not constitute unacceptable damage, will be documented and indicated as signs of wear, if applicable.

Damage or defects that, according to the applicable standard, can no longer be attributed to normal use or wear and tear are listed under "Value Reducing Factors" in the product description.

Depending on the product specification, a monetary ID can be provided. If this takes place, the costs can be 100% d or pro rata depending on the vehicle's age and mileage.

## Previous damages

No apparent prior damage that had been repaired could be found on the vehicle.

## Comments

Die Unterbodenbesichtigung war nur ebenerdig und eingeschränkt möglich. Mehrkosten möglich



Figure 1: Diagonal front (left)



Figure 2: Diagonal front (right)



Figure 3: Diagonal rear (left)



Figure 4: Diagonal rear (right)

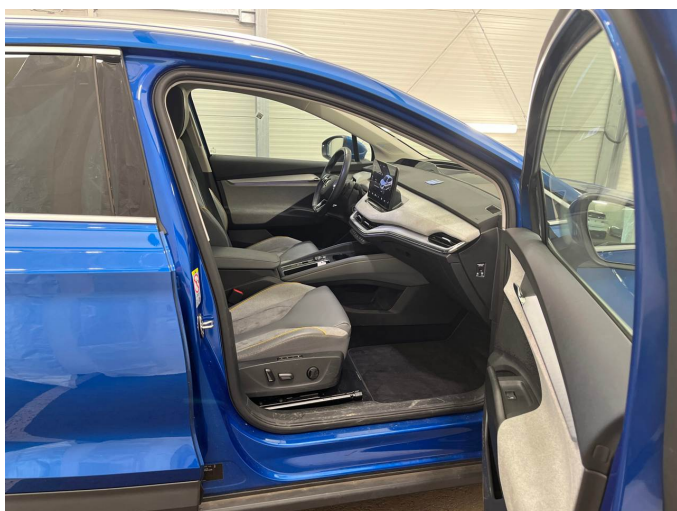


Figure 5: Interior - front



Figure 6: Interior - rear



Figure 7: Instrument cluster



Figure 8: Instrument panel



Figure 9: Interior 360° view



Figure 10: Cargo area

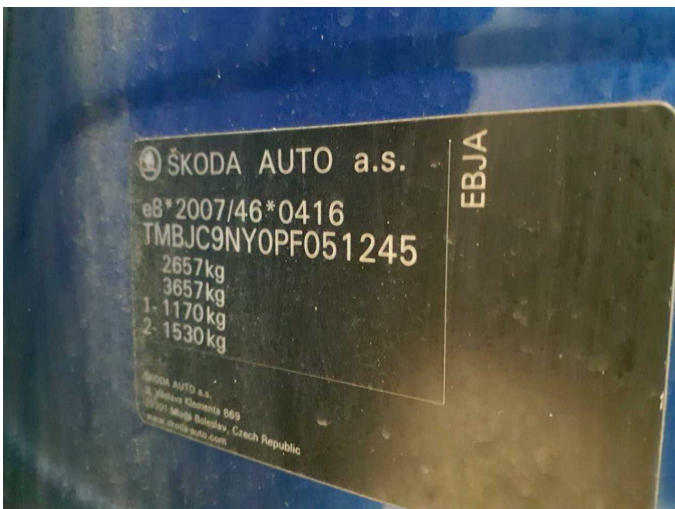


Figure 11: VIN



Figure 12: Mounted tyres



Figure 13: Documents

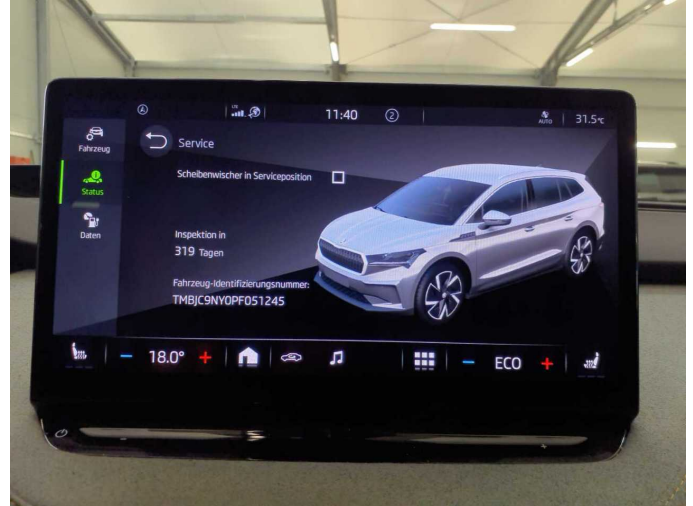


Figure 14: Documents



Figure 15: Additional tyres



Figure 16: Navigation



Figure 17: Misc.



Figure 18: Misc.



Figure 19: Misc.



Figure 20: Misc.



Figure 21: Misc.



Figure 22: Misc.

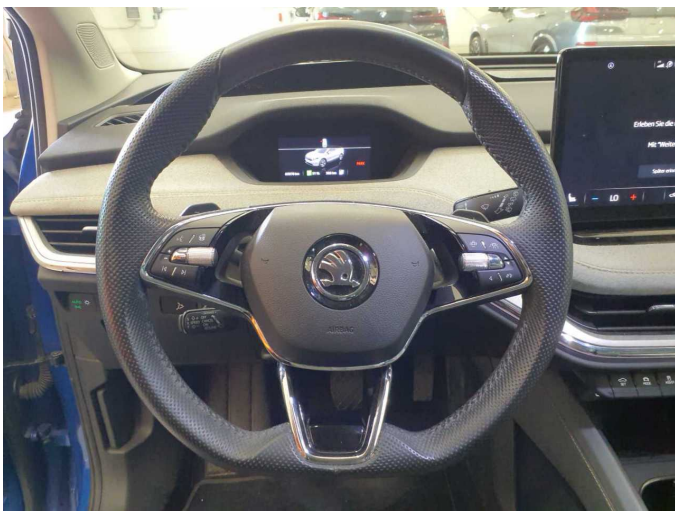


Figure 23: Misc.



Figure 24: Misc.



Figure 25: Misc.



Figure 26: Misc.



Figure 27: Misc.

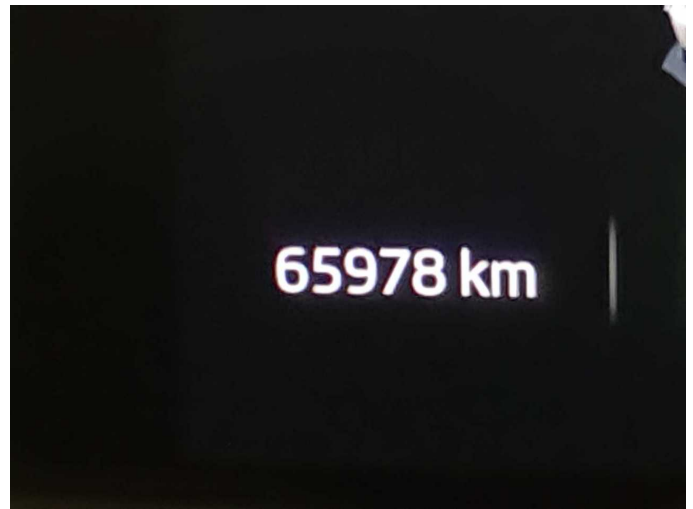


Figure 28: Misc.



Figure 29: Misc.



Figure 30: Misc.



Figure 31: Misc.



Figure 32: Misc.



Figure 33: Misc.



Figure 34: Misc.

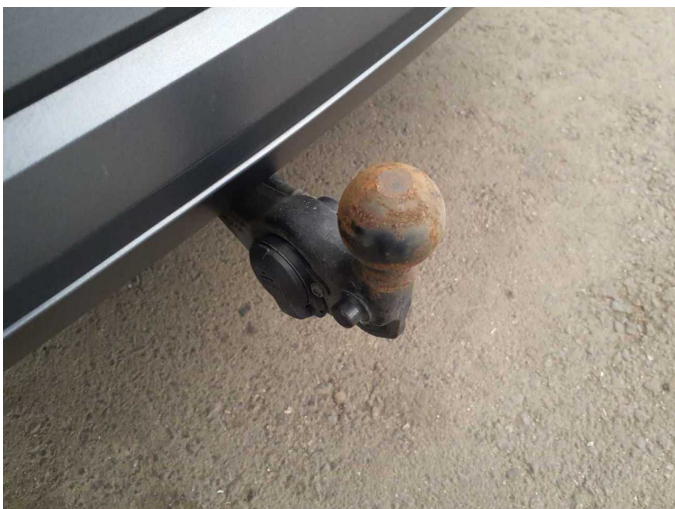


Figure 35: Misc.



Figure 36: Misc.



Figure 37: Misc.



Figure 38: Misc.



Figure 39: Misc.



Damage 2: Interior: Interior light, rear (Innenverkleidung Kofferraum) - Broken / torn - Replace



Damage 2: Interior: Interior light, rear (Innenverkleidung Kofferraum) - Broken / torn - Replace



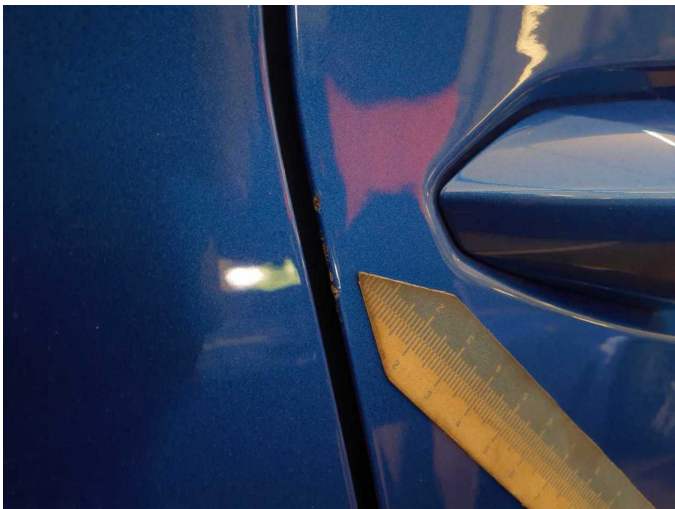
Damage 3: Door - front left side: Door edge - Scratch(es) - Smart repair



**Damage 3:** Door - front left side: Door edge - Scratch(es) - Smart repair



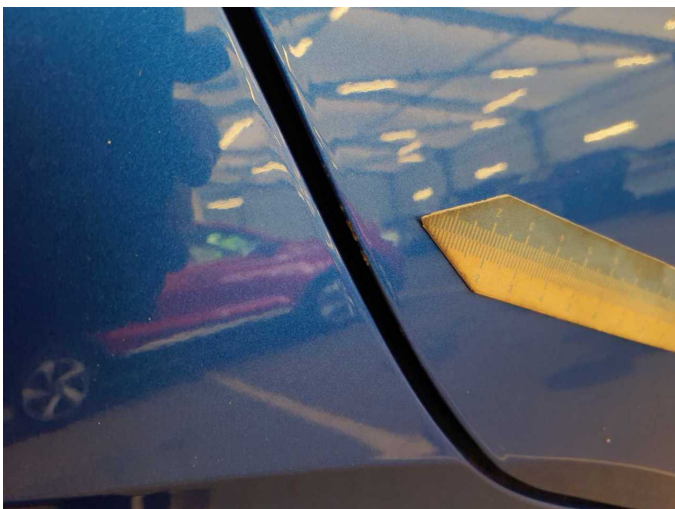
**Damage 4:** Door - front right side: Door edge - Scratch(es) - Smart repair



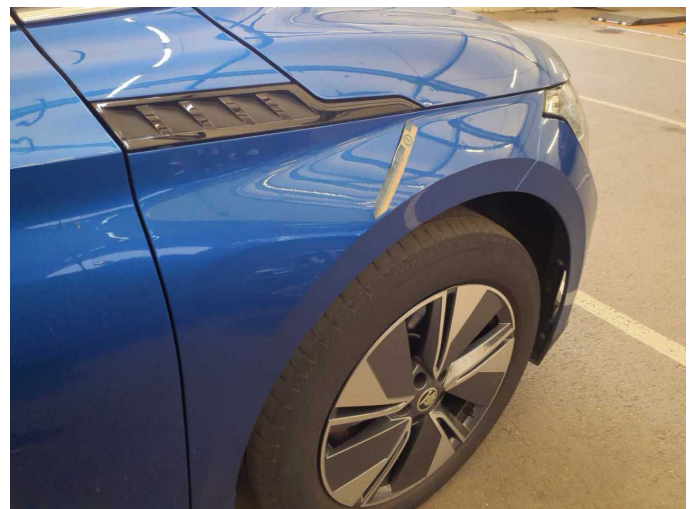
**Damage 4:** Door - front right side: Door edge - Scratch(es) - Smart repair



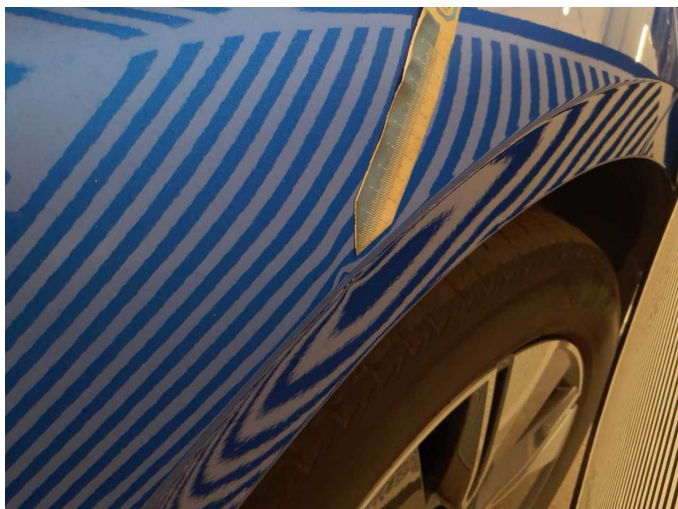
**Damage 5:** Door - rear right side: Door edge - Scratch(es) - Smart repair



**Damage 5:** Door - rear right side: Door edge - Scratch(es) - Smart repair



**Damage 6:** Mudguard - right side: Mudguard - right side - Dent / paintcoat damage - Smart repair



**Damage 6:** Mudguard - right side: Mudguard - right side - Dent / paintcoat damage - Smart repair



**Damage 7:** Wheel / tyres: Alloy rim - rear right side - Scratch(es) - Loss in value



**Damage 7:** Wheel / tyres: Alloy rim - rear right side - Scratch(es) - Loss in value



# Wartungshistorie

(gemäß Auftraggeber Informationen)

Fahrgestellnummer: TMBJC9NY0PF051245

Hersteller / Modell: SKODA SKODA Enyaq iV 80

Datum	KM-Stand	Beschreibung
21.05.2026	65.890	Systemtest/Eigendiagnose
28.11.2025	51.976	Reparatur Sonstiges; Systemtest/Eigendiagnose
26.05.2025	39.893	Bremsflüssigkeit; Bremsflüssigkeit ern; Regelwartungsdienst