

## Expertise

Protocol number: 45506953  
Order No. / Reference: 26348573  
Inspection date: 19 May 2026

Manufacturer: Opel

Model: Insignia Sports Tourer 2.0 Diesel Aut. Business

VIN: W0VZT8EP7N1005979



### Vehicle details

#### Manufacturer / Type / Model / Equipment

Opel Insignia Sports Tourer 2.0 Diesel Aut. Business

**Vehicle Identification number** W0VZT8EP7N1005979

**Mileage (Read)** 91,954 km

**First registration** 12 Apr 2022

**Number of holders** 1

**Power / Engine displacement** 128 kw / 1,995 ccm

**Fuel type / Cylinder** Diesel / 4

**Gearbox / Number of gears** Automatic / 8

**Type of drive** Front drive

**Type of vehicle** Station wagon

**Colour / colour code** Diamant Schwarz Metallic

**Doors / Seats** 5 / 5

**Upholstery type** Cloth / leather combination

**Colour of upholstery** Black

**readiness to drive** Not roadworthy / moveable



**Vehicle details**

<b>Maintenance booklet / proof</b>	digital proof / complete	<b>Next maintenance in</b>	40 %
<b>Last service on / at</b>	10/2025 at 81,526 km		
<b>Key is / should be</b>	2 / 2	<b>FZG documents</b>	ZB#2 (B) was available (copy), ZB#1 (S) was not available.
		<b>Letter No.</b>	GJ652052
<b>Previous damage / Accident</b>	None detectable	<b>Repainting</b>	None detectable
<b>Inspection conditions</b>	sufficient	<b>Lifting equipment / pit</b>	No
<b>Test drive</b>	Not performed	<b>Engine function test</b>	Performed
<b>readiness to drive</b>	Not roadworthy / moveable		
<b>Manufacturer key number/ type code number</b>	1844 / AMC 00266		
<b>Emission standard</b>	EURO6;WLTP;AP;PI/CI; M, N1 I	<b>fine dust sticker</b>	
<b>Permitted total weight</b>	2,215 kg	<b>Empty weight</b>	

**Tyres**

**Mounted tyres**

#	Tyre size	Type of tyre	Manufacturer	Tread depth
1)	245/45 R18 100Y	Summer tyres on Light alloy	Continental	6mm / 6mm
2)	245/45 R18 100Y	Summer tyres on Light alloy	Bridgestone	5mm / 5mm

**Additional tyres**

#	Tyre size	Type of tyre	Manufacturer	Tread depth
1)	225/55 R17 97H	Winter tyres on Light alloy	Hankook	4mm / 4mm
2)	225/55 R17 97H	Winter tyres on Light alloy	Hankook	5mm / 5mm

**Replacement**

Typ	Tyre size	Type of tyre	Manufacturer	Tread depth
Tirefit		Expiration date 03/2026		

**Legend: Tread depth information for the left tire is listed first, for the right tire it is listed second on the axle in the direction of travel.**



## Equipment

### Standard equipment

- Storage compartments
- Airbag: Front and rear outer head airbags
- Ambient lighting
- Electrically adjustable and heated exterior mirrors for driver and passenger side
- Roof rails, silver anodized
- Diesel particulate filter
- Electronic brake force distribution (EBD)
- Electric windows front and rear
- Pedestrian protection including active hood
- Luggage compartment cover
- Transmission: 8-speed automatic transmission
- Rear window wiper
- Automatic climate control, two zones
- Rear headrests (3 pieces)
- LED fog lights
- Steering column adjustable for height and reach
- Illuminated makeup mirrors in both sun visors
- Package: Winter 1 (AGR, Driver)
- Parkpilot, front and rear parking aid
- Quickheat rapid heating system
- Radio: Multimedia Navi Pro with 8" color touchscreen display
- Rear seat backrest folds forward in a 60:40 split
- Seat belts: Three-point seat belts in all seats
- Visibility equipment
- Start/Stop System
- Traction Control (TC) Plus
- Pre-installation for child seat mounting system "ISOFIX"
- Thermal insulation glazing, green tinted
- Second folding ignition key
- Airbag: Front airbags and side airbags, driver and front passenger
- Anti-lock braking system (ABS)
- Hill Start Assist
- Third brake light
- Decorative strip hexagon
- Tachometer
- Electronic Stability Program (ESP Plus)
- Front collision warning system with pedestrian detection and automatic emergency braking
- Speed controller
- Back window, heater
- Child safety lock in the rear doors, manual
- Front headrests
- LED headlights
- LED daytime running lights including LED indicators, front and LED taillights
- Center armrest, front
- Electric parking brake
- Upholstery: Billy fabric, black
- Radio: Digital radio reception DAB+
- Tire repair kit
- Tire pressure gauge
- Power steering
- Safety net
- Lane Keeping Assist
- Bumpers painted in body color
- Traffic sign assistant
- Immobiliser
- Central locking with remote control



## Extra equipment

- Swiveling trailer hitch (including trailer stability program)
  - Paint finish: Metallic
  - Package: Business Premium (Easy Access Package: Keyless locking and starting system, sensor-controlled tailgate, electric loading sill protection, stainless steel - Charging Package: Wireless charging, 2 USB ports, rear center console - Park & Go: Digital reversing camera, reversing assistant, lane change assistant, blind spot warning in both exterior mirrors - Innovation Package 1: IntelliLux LED Pixel headlights, traffic sign assistant - Solar Protect heat-insulating glass, heavily tinted, in the rear)
  - Package: Sound (Bose sound system)
  - Panoramic glass sliding/tilting roof, electric (with pre-selection function and spoiler position for the front part, including anti-pinch protection, comfort closing function via radio remote control of the central locking system, electrically operated sunshade, and pre-installation for safety net attachment in the 1st row)
  - Wheels: Alloy wheels 8.5 J x 18 (5 spokes) (with tires 245/45 R 18)
- Anti-theft alarm system (burglar alarm - deterrent signal - ultrasonic interior monitoring - tilt monitoring - monitoring of trunk, doors, hood, rear window (on Sports Tourer) and rims - horn and tow-away protection - mechanical door locking)
  - Package: Innovations 2 (automatic transmission) (Head-up display - Adaptive cruise control (Generation 3), Stop & Go function - Forward collision warning with pedestrian detection and automatic emergency braking, active from 4 km/h, range 150 m. In case of risk of collision, the braking system is prepared and, if necessary, emergency braking / automatic emergency braking is initiated - Traffic sign recognition)
  - Upholstery: Monita fabric/Premium leather look including Winter Package 2 (Ergonomic active seat, certified by the Campaign for Healthy Backs (AGR), front/front seat heating, multi-stage, front/front heated leather steering wheel, heated ThermaTec windshield, Seat Comfort Equipment 1: 8-way electrically adjustable driver's seat, electro-pneumatically adjustable lumbar support, memory function - driver and exterior mirrors, massage function, front exterior mirrors, electrically adjustable, heated, folding rear seat backrest with FlexFold function, 40:20:40 split, Charging Package: Wireless charging, 2 USB ports)

## Brief expert findings

Documents submitted	At the time of the inspection, the vehicle registration certificate Part 2 (title) was available, but the vehicle registration certificate Part 1 (document) was not. (Copy)
VIN comparison	The vehicle identification number (VIN) was read from the vehicle and its conformity with the submitted documents was confirmed by the undersigned during the inspection.
Inspection	The inspection conditions were sufficient for the assessment of the vehicle. No lifting equipment or pit was available for inspecting the vehicle. Therefore, inspection of the vehicle's underside was only possible to a limited extent.
Test drive	No test drive/shunting maneuver was carried out during the inspection of the vehicle.
Engine function test	An engine test run was performed.
readiness to drive	The vehicle was not capable of driving under its own power at the time of inspection, but can be moved on its own axle with the aid of assistance.



## Value reducing factors

No.	Component group	Description
1	Trim / covers	Floor mats - Broken / torn - Replace
2	Equipment	Tirefit filler - Expired - Replace
3	Rear bumper	Rear bumper - Scratch(es) - Smart repair
4	Wheel / tyres	Tyre - front right side - Broken / torn - Replace
5	Wheel / tyres	Tyre - rear left side - Broken / torn - Replace
6	Wheel / tyres	Alloy rim - rear left side - Scratch(es) - Loss in value
7	Wheel / tyres	Alloy rim - rear right side - Scratch(es) - Loss in value
8	Wheel / tyres	Alloy rim - front right side - Scratch(es) - Loss in value
9	Side panel - rear right side	Side panel - Scratch(es) - Paint
10	Front bumper	Front bumper - Scratched - Repair and paint
11	Vehicle glazing	Windscreen - Broken / torn - Replace

## Wear and tear

No.	Component group	Description
1	Interior	Interior - Scratch(es) - No deduction
2	Bonnet	Bonnet - Stone chips - No deduction

The vehicle shows signs of wear and tear commensurate with its age and use.

## Order/Scope of Order

An order was placed to prepare a sales report for the described vehicle. This report includes the following:

- Description of key vehicle information
- Documentation of equipment features  
(*Delivery by third-party service providers*)
- Documentation of damage, defects, missing parts
- Documentation of prior damage, unrepaired prior damage, repainting
- A brief visual or functional inspection of the equipment details, if possible.  
(*Functional testing of driver assistance systems is not included in the scope of services!*)
- a photographic documentation of the vehicle

## Basis for the order

This product is based on the guidelines for vehicle returns and valuations published by Alphabet Fleet GmbH. The expert makes the specific findings in each individual case objectively, within the framework of the prescribed standards, based on their own expertise.

The vehicle inspection takes place in a fully assembled, unassembled state.

Damage or defects that can only be detected during disassembly/diagnostic work or through further investigation remain within the realm of prognostic risk. An increased risk exists due to concealed defects caused by fraudulent misrepresentation and which were not identifiable by the expert.

Damage or defects resulting from normal use or wear and tear of the vehicle will be accepted in accordance with the applicable standard.

There was no explicit identification or monetary consideration of the expected features within the product.

Features which, in their nature and extent, slightly exceed normal use but do not constitute unacceptable damage, will be documented and indicated as signs of wear, if applicable.

Damage or defects that, according to the applicable standard, can no longer be attributed to normal use or wear and tear are listed under "Value Reducing Factors" in the product description.

Depending on the product specification, a monetary ID can be provided. If this takes place, the costs can be 100% or pro rata depending on the vehicle's age and mileage.



## Previous damages

No apparent prior damage that had been repaired could be found on the vehicle.

## Comments

- Die Unterbodenbesichtigung war nur ebenerdig und eingeschränkt möglich.
- Mehrkosten möglich .
  
- Winterradsatz ist kein Bestandteil des Auslieferungsumfangs.



Figure 1: Diagonal front (left)



Figure 2: Diagonal front (right)



Figure 3: Diagonal rear (left)



Figure 4: Diagonal rear (right)

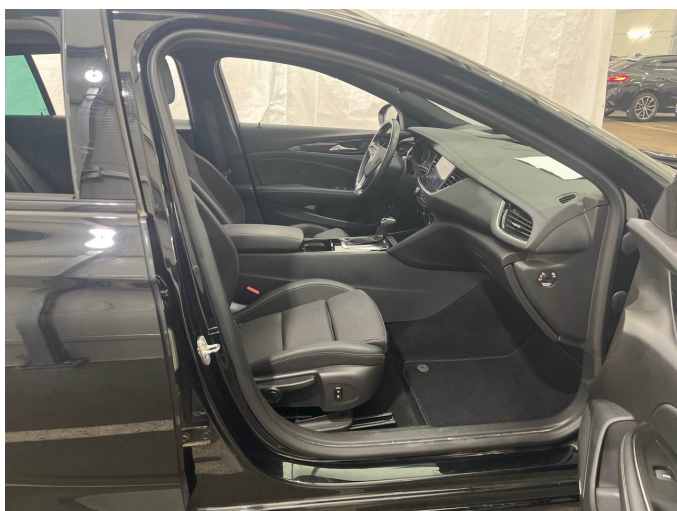


Figure 5: Interior - front



Figure 6: Interior - rear



Figure 7: Instrument cluster



Figure 8: Instrument panel



Figure 9: Interior 360° view



Figure 10: Cargo area

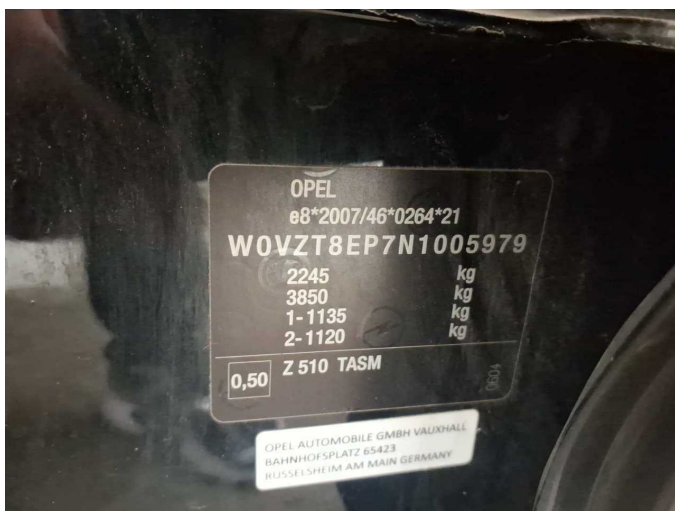


Figure 11: VIN



Figure 12: Mounted tyres



Figure 13: Documents



Figure 14: Documents

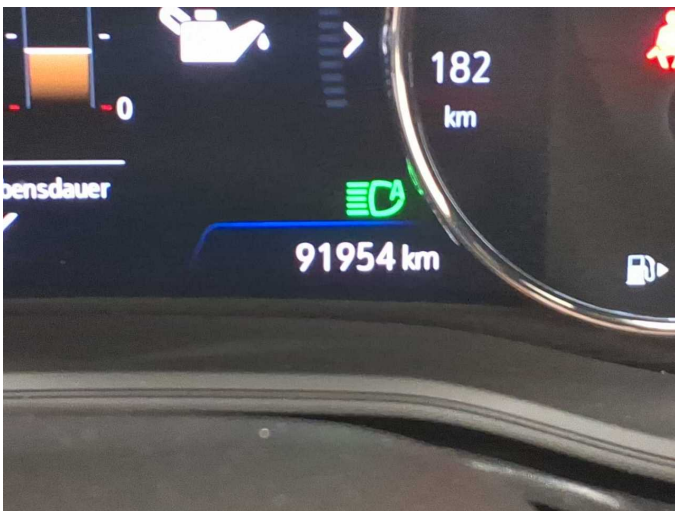


Figure 15: Documents



Figure 16: Additional tyres

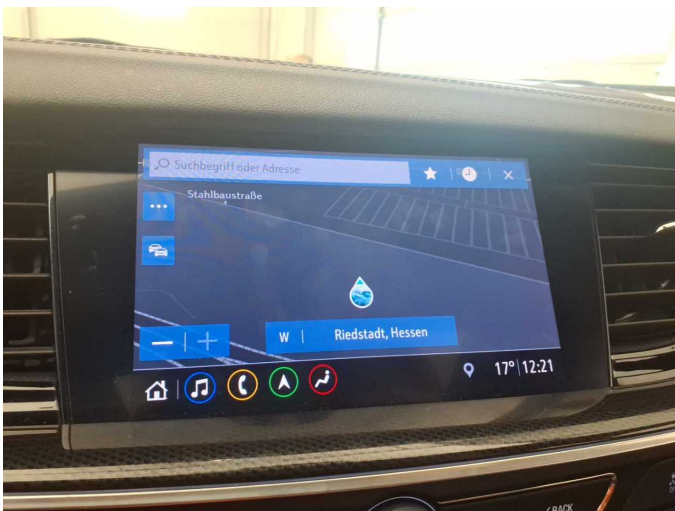


Figure 17: Navigation



Figure 18: Misc.



Figure 19: Misc.



Figure 20: Misc.



Figure 21: Misc.



Figure 22: Misc.

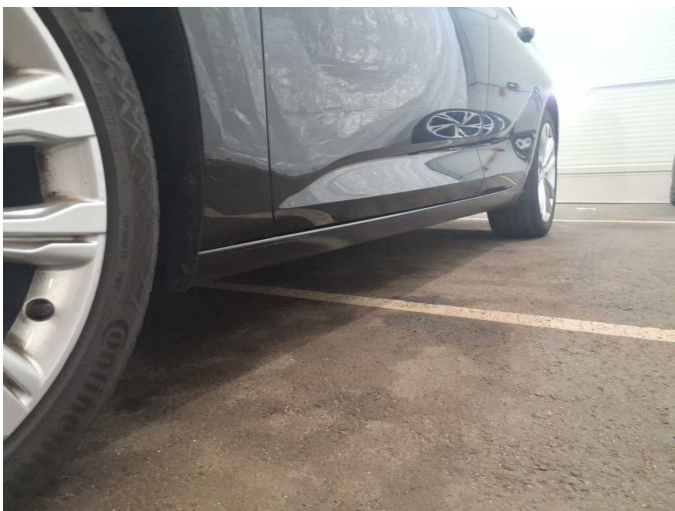


Figure 23: Misc.

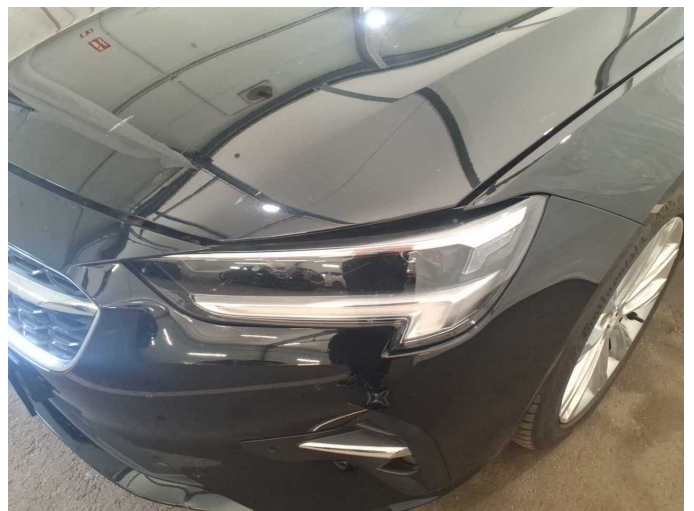


Figure 24: Misc.



Figure 25: Misc.



Figure 26: Misc.



Figure 27: Misc.



Figure 28: Misc.



Figure 29: Misc.



Figure 30: Misc.



Figure 31: Misc.



Figure 32: Misc.



Figure 33: Misc.

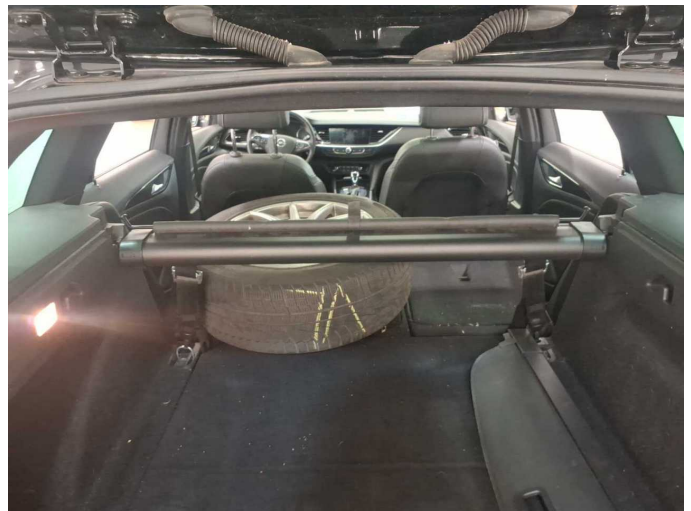
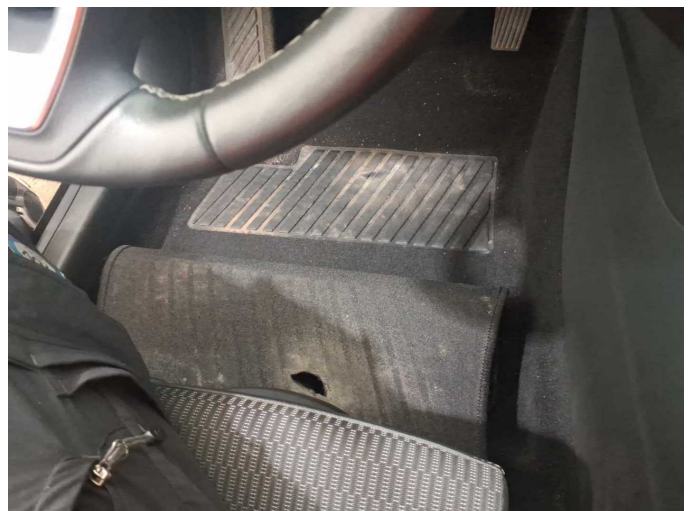


Figure 34: Misc.



Damage 1: Trim / covers: Floor mats - Broken / torn - Replace



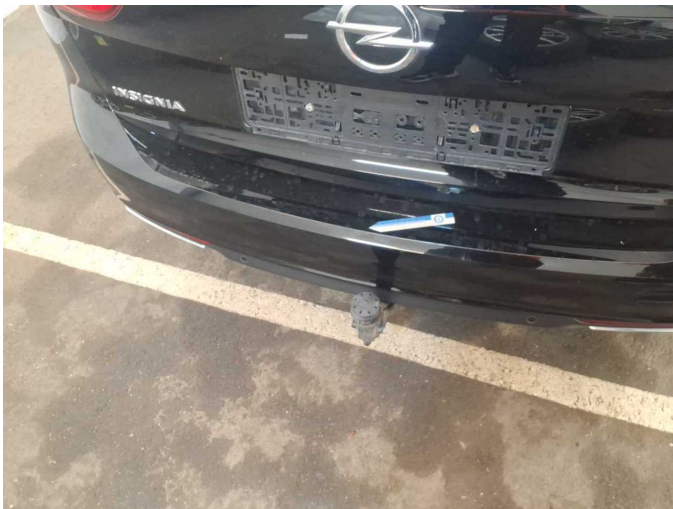
Damage 1: Trim / covers: Floor mats - Broken / torn - Replace



**Damage 2:** Equipment: Tirefit filler - Expired - Replace



**Damage 3:** Rear bumper: Rear bumper - Scratch(es) - Smart repair



**Damage 3:** Rear bumper: Rear bumper - Scratch(es) - Smart repair



**Damage 4:** Wheel / tyres: Tyre - front right side - Broken / torn - Replace



**Damage 4:** Wheel / tyres: Tyre - front right side - Broken / torn - Replace



**Damage 5:** Wheel / tyres: Tyre - rear left side - Broken / torn - Replace



**Damage 5:** Wheel / tyres: Tyre - rear left side - Broken / torn - Replace



**Damage 6:** Wheel / tyres: Alloy rim - rear left side - Scratch(es) - Loss in value



**Damage 6:** Wheel / tyres: Alloy rim - rear left side - Scratch(es) - Loss in value



**Damage 7:** Wheel / tyres: Alloy rim - rear right side - Scratch(es) - Loss in value



**Damage 7:** Wheel / tyres: Alloy rim - rear right side - Scratch(es) - Loss in value



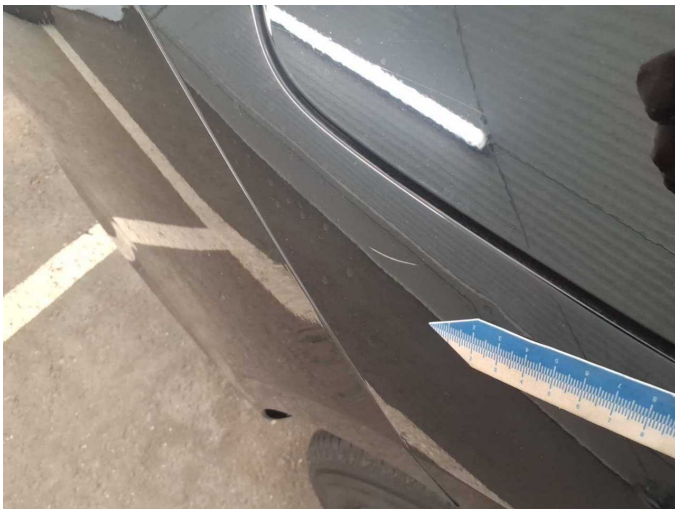
**Damage 8:** Wheel / tyres: Alloy rim - front right side - Scratch(es) - Loss in value



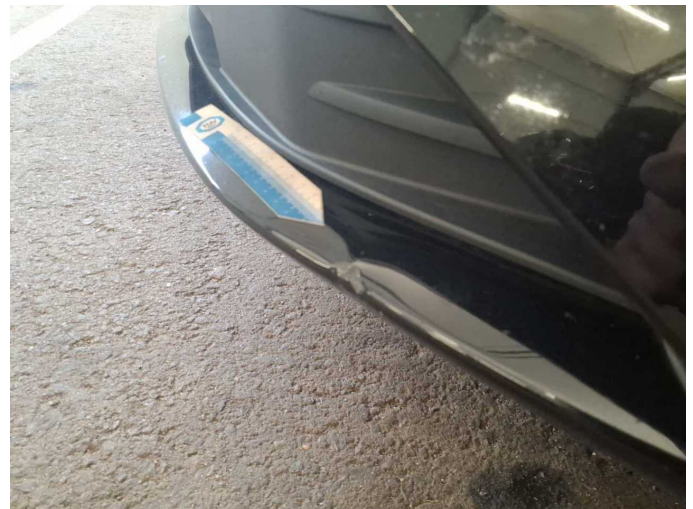
**Damage 8:** Wheel / tyres: Alloy rim - front right side - Scratch(es) - Loss in value



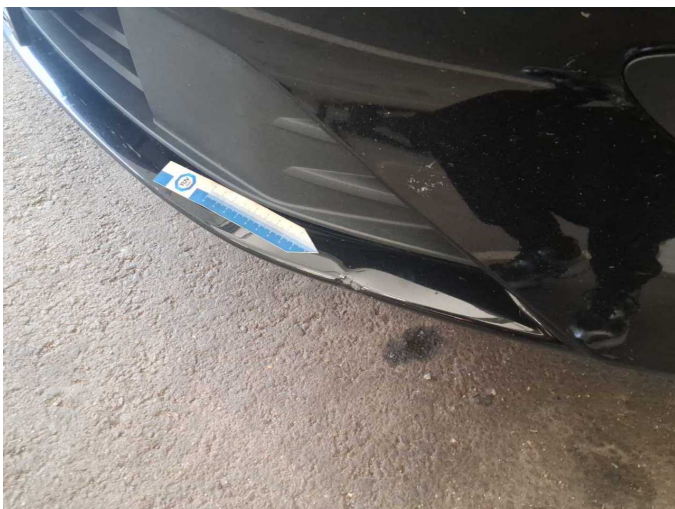
**Damage 9:** Side panel - rear right side: Side panel - Scratch(es) - Paint



**Damage 9:** Side panel - rear right side: Side panel - Scratch(es) - Paint



**Damage 10:** Front bumper: Front bumper - Scratched - Repair and paint



**Damage 10:** Front bumper: Front bumper - Scratched - Repair and paint



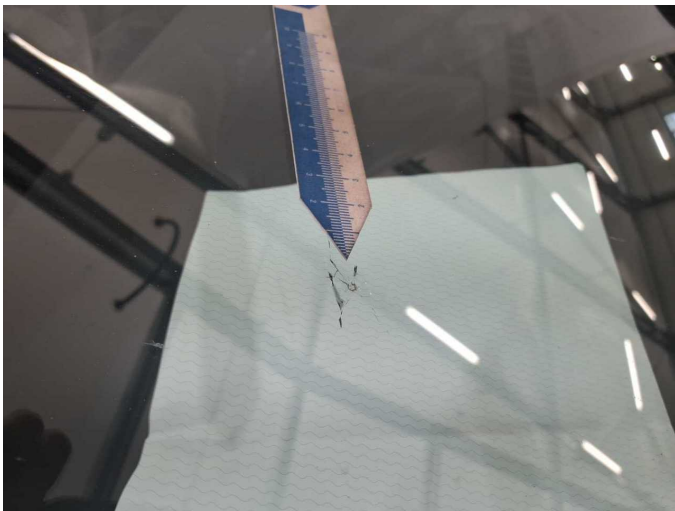
**Damage 10:** Front bumper: Front bumper - Scratched - Repair and paint



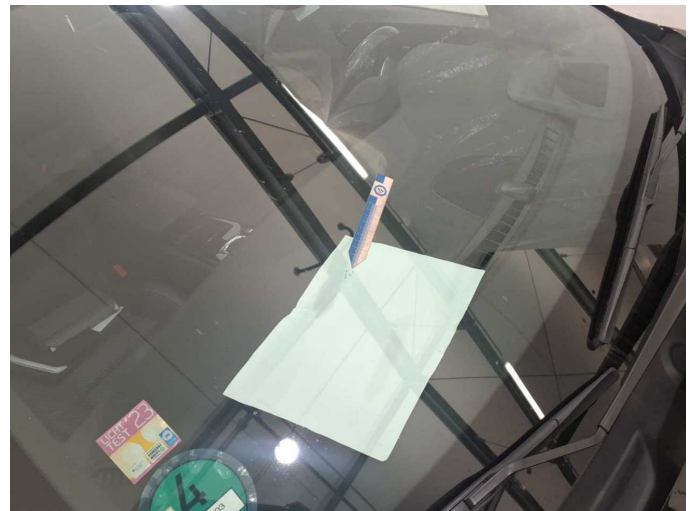
**Damage 10:** Front bumper: Front bumper - Scratched - Repair and paint



**Damage 10:** Front bumper: Front bumper - Scratched - Repair and paint



**Damage 11:** Vehicle glazing: Windscreen - Broken / torn - Replace



**Damage 11:** Vehicle glazing: Windscreen - Broken / torn - Replace



# Wartungshistorie

(gemäß Auftraggeber Informationen)

Fahrgestellnummer: W0VZT8EP7N1005979

Hersteller / Modell: OPEL OPEL Insignia Sports Tourer 2.0 Diesel Aut. Business

Datum	KM-Stand	Beschreibung
13.10.2025	81.526	Bremse Sonstiges; Bremsklötze hinten; Bremsscheiben + Klötze h; Bremsscheiben hinten; Motoröl b. Wartung; Ölfilter ern; Regelwartungsdienst; Wartung Sonstiges
24.04.2025	65.962	AU; Motoröl b. Wartung; Ölfilter ern; Regelwartungsdienst; Wartung Sonstiges
06.12.2024	56.046	Bremsklötze vorne; Bremsscheiben + Klötze v; Bremsscheiben vorne
14.06.2024	43.686	Bremsflüssigkeit; Bremsflüssigkeit ern; Bremsklötze vorne; Kraftstofffilter ern; Motoröl b. Wartung; Ölfilter ern; Regelwartungsdienst; Wartung Sonstiges
05.05.2023	23.452	Motoröl b. Wartung; Regelwartungsdienst