

Expertise

Protocol number: 46293291
Order No. / Reference: 26584248
Inspection date: 26 Jun 2026

Manufacturer: Mercedes-Benz

Model: C 300 de T 9G-TRONIC Night Edition

VIN: W1K2052131G091810



Vehicle details

Manufacturer / Type / Model / Equipment

Mercedes-Benz C 300 de T 9G-TRONIC Night Edition

Vehicle Identification number W1K2052131G091810

Mileage (Read) 160,300 km

First registration 16 Mar 2021

Number of holders 1

Next periodical technical inspection 06/2026

(Report not on hand)

Power / Engine displacement 143 kw / 1,950 ccm

Fuel type / Cylinder Hybr.D/E ext.auf1 / 4

Gearbox / Number of gears Automatic / 9

Type of drive Rear drive

Type of vehicle Station wagon

Colour / colour code Black University

Doors / Seats 5 / 5

Upholstery type Alcantara / Leather

Colour of upholstery Anthracite-Black

Re-import no

readiness to drive Roadworthy



Vehicle details

Maintenance booklet / proof	digital proof / complete	Next maintenance in	260 Tag(e)
Last service on / at	03/2026 at 155,408 km		
Key is / should be	2 / 2	FZG documents	ZB#2 (B) was available (copy), ZB#1 (S) was not available.
		Letter No.	GC559978
Previous damage / Accident	Detectable	Repainting	Detectable
Inspection conditions	sufficient	Lifting equipment / pit	No
Test drive	Not performed	Engine function test	Performed
readiness to drive	Roadworthy		
Manufacturer key number/ type code number	2222 / ALF 00051		
Emission standard	EURO6;WLTP;AP;PI/CI; M, N1 I	fine dust sticker	
Permitted total weight	2,480 kg	Empty weight	

Tyres

Mounted tyres

#	Tyre size	Type of tyre	Manufacturer	Tread depth
1)	225/45 R18 95Y	Summer tyres on Light alloy	Continental	6mm / 6mm
2)	245/40 R18 97Y	Summer tyres on Light alloy	Continental	4mm / 4mm

Legend: Tread depth information for the left tire is listed first, for the right tire it is listed second on the axle in the direction of travel.

TÜV SÜD Auto Partner GmbH
Wiesenring 2
04159 Leipzig

Inspection location
Hartmann Fleet Professionals GmbH
Leerenstraße 25
29683 Bad Fallingbommel



Equipment



Standard equipment

- Storage compartment under the load floor
- Airbag (driver airbag - passenger airbag - sidebags for driver and passenger (combined thorax/pelvisbag) - windowbags left/right - kneebag for driver)
- Ambient lighting (Design the interior according to your personal preference or current mood. With a total of 64 colors, the ambient lighting offers almost unlimited possibilities for lighting design and has the right color for every situation. Illuminated door sills on the driver and passenger sides.)
- Exterior mirrors, left and right, heated, electrically adjustable, painted in body color (with aspherical curved mirror glass and integrated turn signal light)
- Brake Assist, Active (Collision warning including Adaptive Brake Assist and autonomous partial braking to reduce or prevent collisions)
- Third brake light in LED technology
- ECO start/stop function
- Driving light assistant
- Chassis: AGILITY CONTROL chassis with selective damping system
- Pedestrian protection (active hood) (If a pedestrian collides head-on with the vehicle, the rear of the hood is raised. The increased distance to the engine components creates additional deformation space to reduce the risk of injury to pedestrians in certain accident situations.)
- Halogen headlights with integrated LED daytime running lights (manual headlight range adjustment)
- Black fabric headliner
- Instrument panel and door sills in black ARTICO man-made leather
- Mechanical child safety lock for the rear doors
- Climate control: THERMATIC automatic climate control with 2 climate zones (temperature for driver and front passenger can be regulated separately - fine dust activated carbon filter for dust and odor reduction - recirculation switch with comfort function - sun and dew point sensor - rear passenger air vents)
- Headrests 5-way adjustable for driver and front passenger, 4-way adjustable, and 2-way adjustable in the rear.
- Charging cable for household socket, 5m, smooth (This charging cable, also called Mode 2 cable, allows you to charge the vehicle battery at the household socket with up to 2.3 kW (230 V, 1-phase, 10 A) and fits sockets of type E/F CEE 7/7.)
- Steering column mechanically adjustable in height and length
- Mercedes-Benz Emergency Call System (In the event of an accident, the Mercedes-Benz Emergency Call System can significantly reduce the time it takes for emergency services to arrive at the scene. Data transmission takes place via a communication module with its own SIM card. A mobile phone is not required.)
- "Night Edition" badge on the fender
- Upholstery: ARTICO man-made leather/DINAMICA microfiber black (with two-tone contrast stitching in linarite blue/medium grey, which also adorns the armrests on the door and center console)
- ADAPTIVE BRAKE with hill start assist, pre-filling and drying braking in wet conditions
- Airbag: Automatic passenger airbag deactivation (If the passenger seat is unoccupied or a child seat is detected, the passenger airbag is automatically deactivated.)
- Anti-lock braking system (ABS)
- Foldable armrest for driver and front passenger with storage compartment
- Rear armrest with storage compartment and cupholder
- ATTENTION ASSIST (the attention assistant) (can detect typical signs of fatigue through driver behavior and warn the driver of increasing fatigue or inattentiveness)
- Outdoor temperature display
- Brake system with larger brake discs on the front axle
- Diesel particulate filter
- Tachometer
- DYNAMIC SELECT (consisting of 5 driving programs)
- Electronic Stability Program (ESP) with Crosswind Assist (with Curve Dynamic Assist)
- Electric window regulator, 4-way (with comfort operation and anti-pinch protection)
- Black floor mats with AMG lettering
- Luggage net on the left side of the trunk (with two hooks)
- Transmission: 9-speed automatic, 9G-TRONIC (including DIRECT SELECT gear selector and DIRECT SELECT steering wheel shift paddles)
- Heated rear window with timer
- Rear window wiper with intermittent function (and automatic activation when reversing)
- KEYLESS-GO start function (including comfort opening and closing): With this system, the vehicle can be started simply by carrying the electronic key, which stores the access and driving authorization functions. The driver presses the start/stop button in the ignition lock once while holding the brake pedal. On the convertible, the soft top can also be operated from the outside using the open/close buttons on the driver's side of the vehicle key as standard.)
- Instrument cluster with 2 tubular round instruments (and 13.97 cm (5.5") multifunction display and frame in silver chrome (Lines))
- Paint finish: Solid
- Cargo area cover including EASY-PACK safety net
- Steering wheel: Supersport steering wheel - leather deeply embossed (multifunction sports steering wheel in black leather in 3-spoke design, flattened at the bottom, deeply embossed in the middle grip area, with steering wheel shift paddles and steering wheel trim in silver chrome)
- Package: Interior lighting package (front footwell lights - light in the storage compartment of the center console - rear reading lights in the grab handles in LED technology - handle recess lighting in the doors - lighting for cosmetic mirror in the overhead unit)



- Radio accessories: Digital radio (for the DAB, DMB and DAB+ standards)
- Radio: Audio 20 GPS (High-resolution media display with 17.8 cm (7") screen diagonal - Radio - Bluetooth connection for up to two smartphones simultaneously - Controller as central operating system - Two USB ports under the armrest - Sound system with four mid-range speakers in the doors and a front bass speaker - MP3 - Hands-free system)
- Tire pressure monitoring system (TPMS)
- Trip computer integrated into the multifunction display (with instantaneous fuel consumption display)
- Windscreen wipers with rain sensor
- Service interval indicator ASSYST
- Seats: Rear seat backrests foldable 40/20/40 split
- Seats: ISOFIX child seat attachment with top tether in the rear
- Seats: Front seats electrically adjustable (electric adjustment for seat height and backrest angle - mechanical adjustment for longitudinal adjustment and headrests)
- Pre-installation for vehicle monitoring (Vehicle monitoring connects you to your car and gives you a permanent information advantage. This way you always know where your vehicle is and can even determine which area it is allowed to be in. You will also be immediately informed of any unauthorized movements.)
- High-visibility vest for drivers
- Electronic immobilizer
- Central locking (with interior switch, automatic locking (can be deactivated) and crash sensor with emergency opening)
- Package: Night for AMG Line Exterior (Diamond grille with silver pins and high-gloss black louvre, 18" AMG light-alloy wheels in 5-spoke design, front axle 225/45 R18 on 7.5Jx18 ET44, rear axle 245/40 R18 on 8.5Jx18 ET49, aerodynamically optimized, high-gloss black paint and polished finish, AMG front apron with high-gloss black trim, rear bumper with high-gloss black trim, side skirts with black trim strip, beltline trim strip and window surrounds in high-gloss black, exterior mirrors in high-gloss black, heat-insulating dark-tinted glass from the B-pillar, black roof rails)
- Radio accessory: Communication module (LTE) for using Mercedes me connect services (The communication module (LTE) offers you a clear increase in comfort and safety. It constantly connects the vehicle to the internet – so that you can use helpful services such as the Live Traffic Information from Mercedes me connect. Two mobile antennas and an LTE-enabled SIM card ensure a fast connection.)
- Seat belts C-Class (3-point seat belts including mechanical belt height adjustment for driver and front passenger and automatic belt height adjustment in the rear outer seats as well as belt tensioners with belt force limiter for driver and front passenger)
- Sport pedal assembly made of brushed stainless steel with black rubber studs
- Cruise control with HOLD function (with variable speed limit SPEEDTRONIC)
- Pre-installation for vehicle setup (Full control, anytime, anywhere: With the vehicle setup app on your smartphone, you can also change settings and retrieve information remotely. For example, you can set the interior to the correct temperature, send addresses to your navigation system, or lock the doors.)
- Green heat-insulating glass all around, including rear window made of single-pane safety glass.



Extra equipment

- Charging cable for wallbox and public charging stations, 8m, smooth (This charging cable, also called Mode 3 cable, allows you to charge the vehicle battery at the wallbox or at public charging stations with up to 11 kW (Type 2, 3-phase, 16 A))
- Decorative elements, wood, ash, black, open-pore
- EASY-PACK tailgate (with electric operation for opening and closing and electric cargo area cover)
- Extendable sun visors (and side-swiveling. The side-swiveling and extendable sun visors for driver and front passenger offer protection against disturbing light from the front or side)
- High-visibility vests for drivers and passengers (one for each seat)
- Package: Advanced Assistance Package (Mirror Package: - Automatically dimming interior and exterior mirrors on the driver's side - Electrically folding exterior mirrors on the left and right - Parking position on the right and ambient lighting in the exterior mirrors - Onboard setting - Automatic lowering of the passenger-side mirror glass to "onboard setting" when reverse gear is engaged Lane Tracking Package: - Active Lane Keeping Assist and Blind Spot Assist Active Distance Assist DISTRONIC including Active Brake Assist)
- Package: Advanced Infotainment Package
- Package: High-End Parking Package (12 sensors - Active Parking Assist: Detects parking spaces up to 35 km/h, steering control, in conjunction with automatic transmission assists with acceleration, braking, gear changes - PARKTRONIC: Visual/acoustic warning of detected obstacles in front of/behind the vehicle up to approx. 10 km/h - Rear Cross Traffic Alert warns visually and audibly of detected cross traffic - Drive Away Assist (only in conjunction with automatic transmission) - Button on the center console or on the control panel for the assistance systems - 360° camera)
- Car key in high-gloss white with decorative frame in high-gloss chrome
- Package: Business PLUS (Parking Package - Active Parking Assistant - Advanced Infotainment Package - Smartphone Integration Package - Apple CarPlay, Android Auto, Media Display with high-resolution 10.25" diagonal, SD card navigation, Live Traffic preparation - Comfort Package - Heated seats for driver/front passenger, Seat Comfort Package for driver/front passenger: - 4-way electric pneumatic lumbar support - Electric seat cushion tilt and mechanical seat cushion depth adjustment by 6 cm - Large fuel tank (not for 300e/de) - Lighting Package - LED headlights, LED daytime running lights)
- Package: Comfort Package
- Package: Light
- Package: Storage (Luggage net on the side of the trunk, right-hand side panel; net on the trunk floor; folding box under the load floor; double cupholder in the center console for 2 x 500 ml (with 6-speed manual transmission); double cupholder in the center console for 2 x 750 ml (with automatic transmission); luggage net in the front passenger footwell; map pockets on the back of the front seats; 2 USB ports with charging function)
- Radio accessories: Fully digital instrument display (The fully digital instrument display with Classic, Progressive and Sporty display styles lets you decide which information is important to you and how it is displayed. The 31.2 cm (12.3") display delivers a crystal-clear image that is easy to read in all lighting conditions.)
- Telephone accessories: Wireless charging system for mobile devices (wireless charging according to Qi standard for compatible mobile phones - fast connection setup between multimedia system and mobile phone via Near Field Communication (NFC) for identification of the mobile device - storage compartment for wireless charging is located in the storage compartment at the front of the center console)

Brief expert findings

Documents submitted	At the time of the inspection, the vehicle registration certificate Part 2 (title) was available, but the vehicle registration certificate Part 1 (document) was not. (Copy)
VIN comparison	The vehicle identification number (VIN) was read from the vehicle and its conformity with the submitted documents was confirmed by the undersigned during the inspection.
Inspection	The inspection conditions were sufficient for the assessment of the vehicle. No lifting equipment or pit was available for inspecting the vehicle. Therefore, inspection of the vehicle's underside was only possible to a limited extent.
Test drive	No test drive/shunting maneuver was carried out during the inspection of the vehicle.
Engine function test	An engine test run was performed.
readiness to drive	The vehicle was roadworthy at the time of inspection.



Value reducing factors

No.	Component group	Description
1	Roof	Cowl - right side - Corrosion - Replace
2	Wheel / tyres	Alloy rim - rear left side - Scratch(es) - Loss in value
3	Side panel - rear right side	Side panel - Scratch(es) - Smart repair
4	Misc.	Main inspection - Due - Perform
5	Mudguard - left side	Mudguard - left side - Scratch(es) - Paint
6	Roof	Roof rail - right side - Deformed - Repair and paint
7	Bonnet	Bonnet - Stone chips - Paint

Wear and tear

No.	Component group	Description
1	Trim / covers	Boot lid - interior trim - Scratch(es) - No deduction
2	Wheel / tyres	Alloy rim - front left side - Scratch(es) - No deduction
3	Front bumper	Front bumper - Stone chips - No deduction
4	Vehicle glazing	Windscreen - Stone chips - No deduction
5	Headlight	Headlight - right side - Stone chips - No deduction
6	Mudguard - right side	Mudguard - right side - Scratch(es) - No deduction
7	Door - front right side	Door - Scratch(es) - No deduction
8	Door - rear right side	Door - Scratch(es) - No deduction
9	Rear bumper	Rear bumper - Scratch(es) - No deduction

The vehicle shows signs of wear and tear commensurate with its age and use.

Missing parts

Description

Interior - Boot cover / roller cover

Previous damages

No.	Previous damage	Extent of damage (Net)
1	Side - left, Professionally repaired	

Repainting

No. Repainting

1 Door - front left side, Professionally carried out

Paint coat thickness measurement

Door - front left side 288 µm |



Order/Scope of Order

An order was placed to prepare a sales report for the described vehicle. This report includes the following:

- Description of key vehicle information
- Documentation of equipment features
(Delivery by third-party service providers)
- Documentation of damage, defects, missing parts
- Documentation of prior damage, unrepaired prior damage, repainting
- A brief visual or functional inspection of the equipment details, if possible.
(Functional testing of driver assistance systems is not included in the scope of services!)
- a photographic documentation of the vehicle

Basis for the order

This product is based on the guidelines for vehicle returns and valuations published by Alphabet Fleet GmbH. The expert makes the specific findings in each individual case objectively, within the framework of the prescribed standards, based on their own expertise.

The vehicle inspection takes place in a fully assembled, unassembled state.

Damage or defects that can only be detected during disassembly/diagnostic work or through further investigation remain within the realm of prognostic risk. An increased risk exists due to concealed defects caused by fraudulent misrepresentation and which were not identifiable by the expert.

Damage or defects resulting from normal use or wear and tear of the vehicle will be accepted in accordance with the applicable standard.

There was no explicit identification or monetary consideration of the expected features within the product.

Features which, in their nature and extent, slightly exceed normal use but do not constitute unacceptable damage, will be documented and indicated as signs of wear, if applicable.

Damage or defects that, according to the applicable standard, can no longer be attributed to normal use or wear and tear are listed under "Value Reducing Factors" in the product description.

Depending on the product specification, a monetary ID can be provided. If this takes place, the costs can be 100% or pro rata depending on the vehicle's age and mileage.

Previous damages

Professionally repaired previous damages were found at the vehicle.



Figure 1: Diagonal front (left)



Figure 2: Diagonal front (right)



Figure 3: Diagonal rear (left)



Figure 4: Diagonal rear (right)



Figure 5: Interior - front



Figure 6: Interior - rear



Figure 7: Instrument cluster



Figure 8: Instrument panel



Figure 9: Interior 360° view



Figure 10: Cargo area



Figure 11: VIN



Figure 12: Mounted tyres



Figure 13: Documents



Figure 14: Navigation

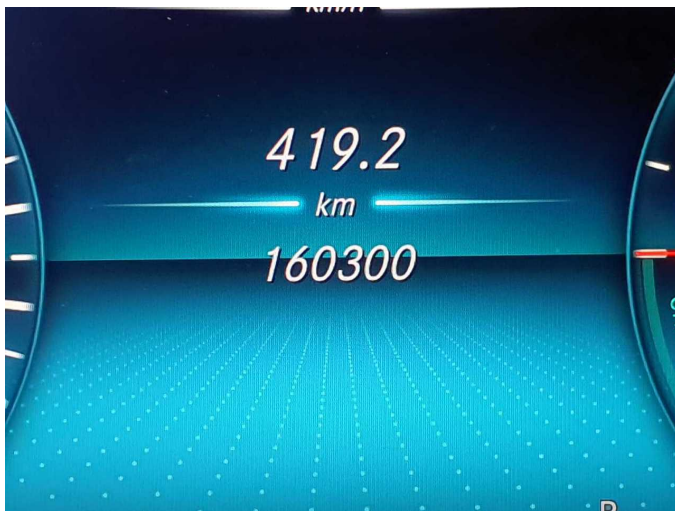


Figure 15: Misc.



Figure 16: Misc.



Figure 17: Misc.

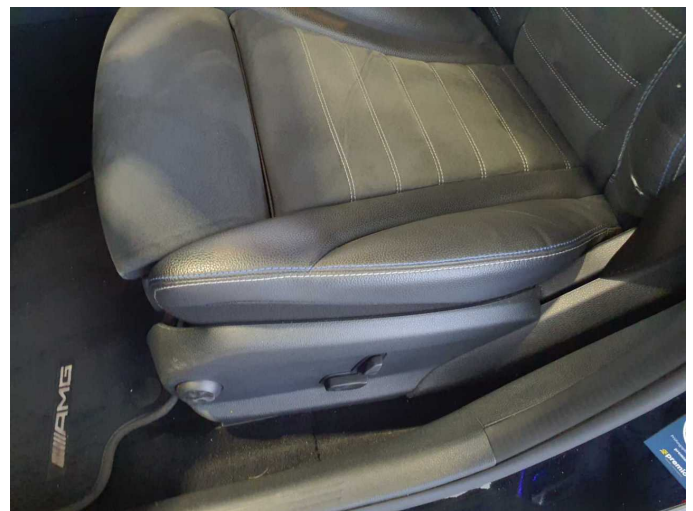


Figure 18: Misc.



Figure 19: Misc.



Figure 20: Misc.



Figure 21: Misc.

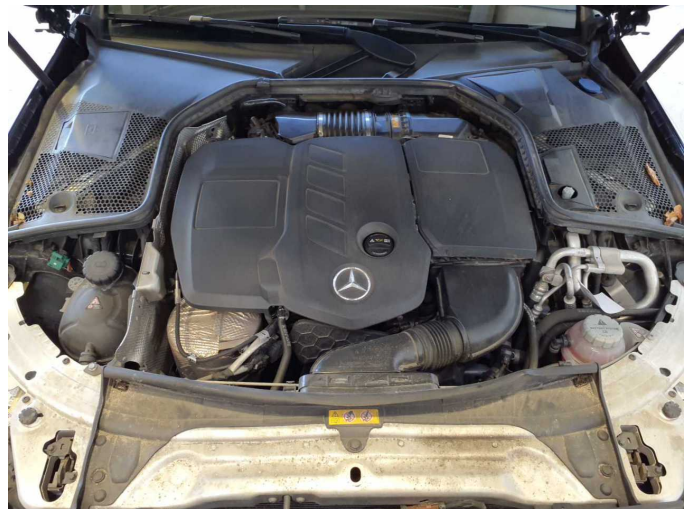


Figure 22: Misc.



Figure 23: Misc.



Figure 24: Misc.



Damage 1: Roof: Cowl - right side - Corrosion - Replace



Damage 1: Roof: Cowl - right side - Corrosion - Replace



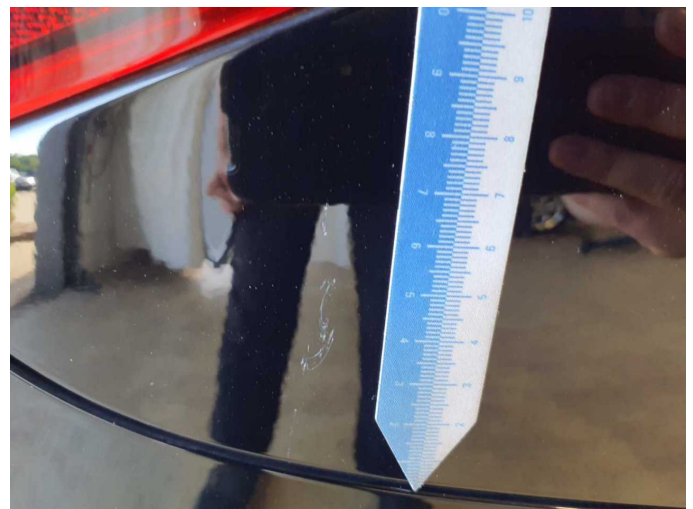
Damage 2: Wheel / tyres: Alloy rim - rear left side - Scratch(es) - Loss in value



Damage 2: Wheel / tyres: Alloy rim - rear left side - Scratch(es) - Loss in value



Damage 3: Side panel - rear right side: Side panel - Scratch(es) - Smart repair



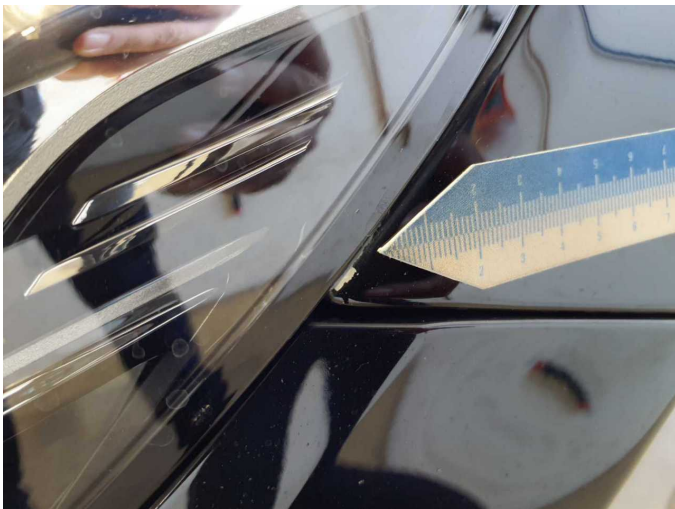
Damage 3: Side panel - rear right side: Side panel - Scratch(es) - Smart repair



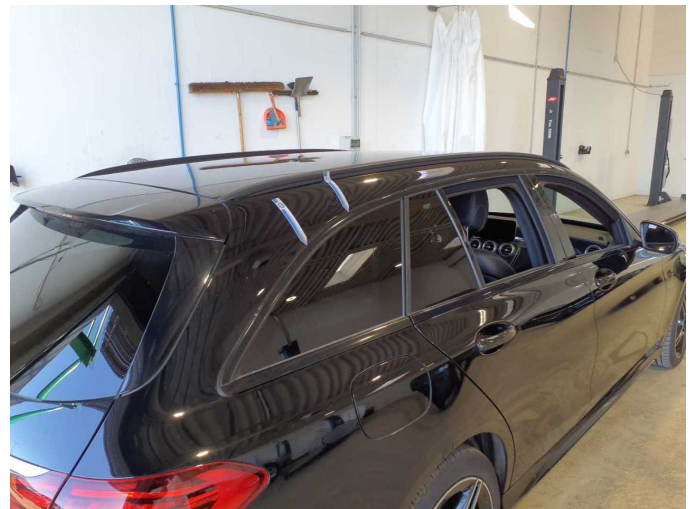
Damage 5: Mudguard - left side: Mudguard - left side - Scratch(es) - Paint



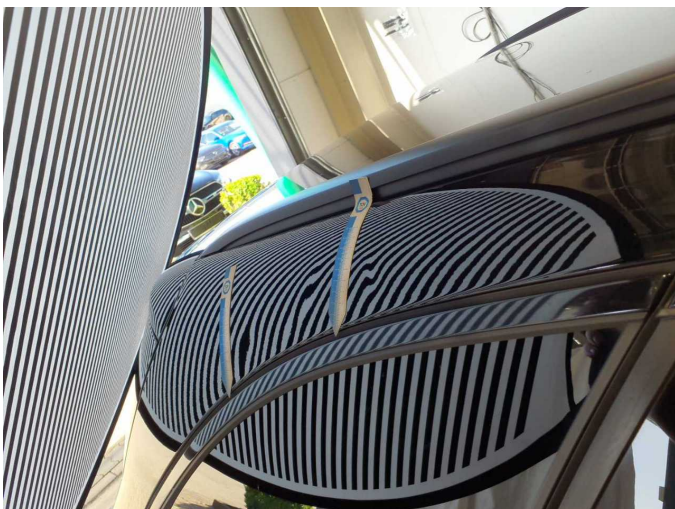
Damage 5: Mudguard - left side: Mudguard - left side - Scratch(es) - Paint



Damage 5: Mudguard - left side: Mudguard - left side - Scratch(es) - Paint



Damage 6: Roof: Roof rail - right side - Deformed - Repair and paint



Damage 6: Roof: Roof rail - right side - Deformed - Repair and paint



Damage 6: Roof: Roof rail - right side - Deformed - Repair and paint



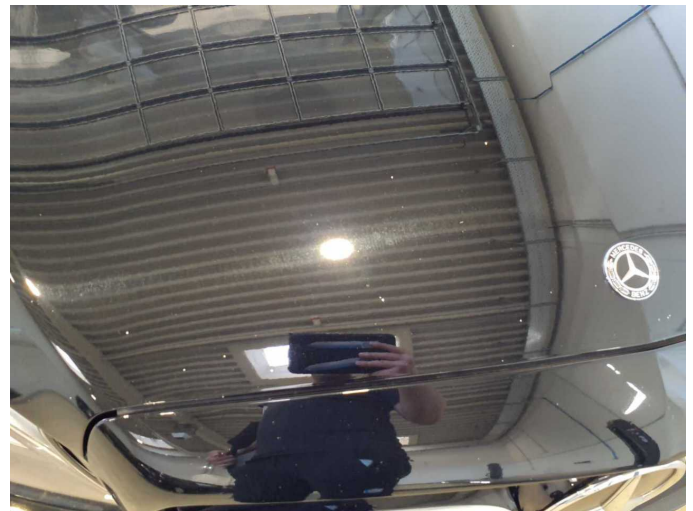
Damage 6: Roof: Roof rail - right side - Deformed - Repair and paint



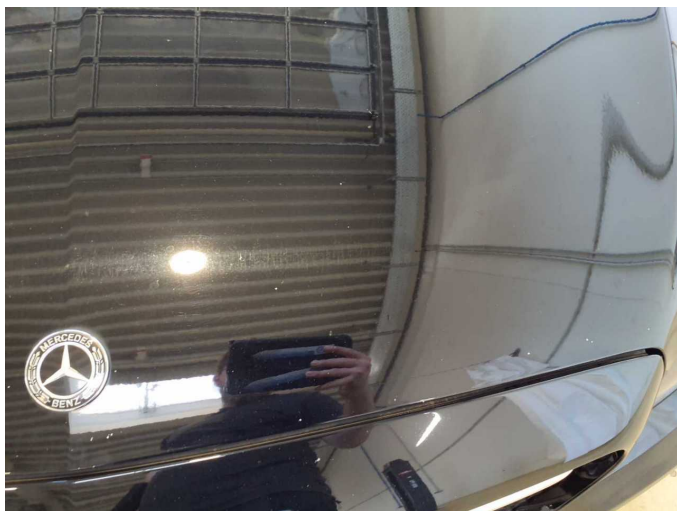
Damage 7: Bonnet: Bonnet - Stone chips - Paint



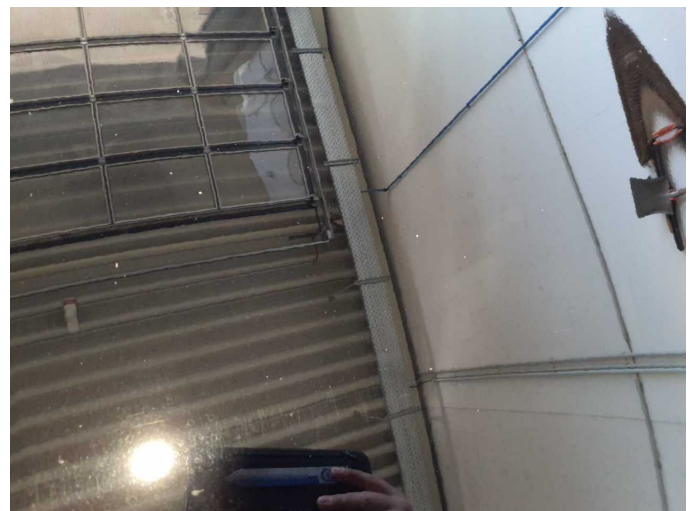
Damage 7: Bonnet: Bonnet - Stone chips - Paint



Damage 7: Bonnet: Bonnet - Stone chips - Paint



Damage 7: Bonnet: Bonnet - Stone chips - Paint



Damage 7: Bonnet: Bonnet - Stone chips - Paint



Missing part 1: Interior: Boot cover / roller cover - Missing - Replace



Repainting 1: Door - front left side



Repainting 1: Door - front left side



Wartungshistorie

(gemäß Auftraggeber Informationen)

Fahrgestellnummer: W1K2052131G091810
Hersteller / Modell: MERCEDES-BENZ MERCEDES-BENZ C 300 de T 9G-TRONIC
Night Edition

Datum	KM-Stand	Beschreibung
13.03.2026	155.408	Regelwartungsdienst
23.09.2025	143.998	Bremsscheiben+Beläge v+h
19.02.2025	129.881	Regelwartungsdienst
13.06.2024	105.733	AU
07.06.2024	105.724	Regelwartungsdienst
26.06.2023	76.704	Regelwartungsdienst
15.09.2022	53.395	Regelwartungsdienst
22.12.2021	27.398	Kleine Inspektion