

Expertise

Protocol number: 46172167
Order No. / Reference: 26501159
Inspection date: 26 Jun 2026

Manufacturer: Skoda

Model: Enyaq iV 80

VIN: TMBJC9NY3PF049876



Vehicle details

Manufacturer / Type / Model / Equipment

Skoda Enyaq iV 80

Vehicle Identification number TMBJC9NY3PF049876

Mileage (Read) 45,571 km

First registration 31 May 2023

Number of holders 1

Power / Engine displacement 70 kw / 0 ccm

Fuel type / Cylinder Electric / 0

Gearbox / Number of gears Direct drive / 1

Type of drive Rear drive

Type of vehicle SUV

Colour / colour code Race Blau Metallic

Doors / Seats 5 / 5

Upholstery type Leather

Colour of upholstery Black



Vehicle details

Maintenance booklet / proof	digital proof / complete	Next maintenance in	343 Tag(e)
Last service on / at	06/2025 at 30,738 km		
Key is / should be	2 / 2	FZG documents	ZB#2 (B) was available (copy), ZB#1 (S) was not available.
		Letter No.	GT098446
Previous damage / Accident	None detectable	Repainting	None detectable
Inspection conditions	sufficient	Lifting equipment / pit	No
Test drive	Not performed	Engine function test	Performed
Manufacturer key number/ type code number	8004 / AWS 00124		
Emission standard	2017/1151;WLTP;reine Elektrofz	fine dust sticker	
Permitted total weight	2,600 kg	Empty weight	

Tyres

Mounted tyres

#	Tyre size	Type of tyre	Manufacturer	Tread depth
1)	235/55 R19 101T	Summer tyres on Light alloy	Pirelli	5mm / 5mm
2)	255/50 R19 103T	Summer tyres on Light alloy	Pirelli	5mm / 5mm

Additional tyres

#	Tyre size	Type of tyre	Manufacturer	Tread depth
1)	235/55 R19 105V	Winter tyres on Light alloy	Bridgestone	7mm / 7mm
2)	255/50 R19 107V	Winter tyres on Light alloy	Bridgestone	5mm / 5mm

Replacement

Typ	Tyre size	Type of tyre	Manufacturer	Tread depth
	Tirefit	Expiration date 12/2027		

Legend: Tread depth information for the left tire is listed first, for the right tire it is listed second on the axle in the direction of travel.



Equipment

Standard equipment

- Storage compartments
- Airbag, driver and passenger
- Airbag, front side airbags
- Anti-lock braking system (ABS)
- Evasive steering assist including turn assist
- Outdoor temperature display
- Hill start assist
- Digital instrument cluster (Virtual Cockpit)
- E-Sound
- Increased battery charging power max. 125 kW incl. 1 year free monthly basic fee at Ionity
- Front radar assistant with pedestrian and cyclist detection and city emergency braking function
- Tinted windows
- Rear window wiper including windshield washer system
- Isofix anchorage on the front passenger seat
- Child safety locks on the rear doors
- Removable boot cover
- Charging cable for AC charging stations (Mode 3 charging cable, Type 2, 16A) (Fast charging connector (CCS / Combo 2))
- Manual headlight range adjustment
- Package: Drive BASIC
- Radio accessories: SmartLink
- Radio accessories: Wireless SmartLink
- Tire Mobility Kit
- Tire pressure monitoring
- Power steering
- Safety lights in the front side doors
- Skoda Care Connect
- Speed limiter
- 12V socket - in the trunk
- Immobiliser
- Airbag, center airbag front
- Airbag, front and rear head airbags
- acoustic windscreen
- Traction control (ASR)
- Electrically adjustable, heated and folding exterior mirrors, including automatic dimming.
- Grey headliner
- Third brake light
- Electronic parking brake including auto-hold function
- ESC Electronic Stability Control
- Electric windows front and rear
- Cruise control
- Transmission: 1-speed (EV)
- Heated rear window
- Automatic interior mirror dimming
- Isofix anchorage on the outer rear seats including top tether
- Front and rear headrests are height-adjustable.
- LED headlights with daytime running lights
- LED taillights
- Steering wheel adjustable for height and reach
- Package: Chrome
- Package: Parking BASIC (front and rear parking sensors - reversing camera)
- Rain sensor and driving light assistant with coming and leaving home function
- Rear seat backrest split 60:40, foldable
- Seat belts
- Seats: Front seats are height-adjustable, including manually adjustable lumbar support.
- Lane keeping assistant (Lane Assist)
- Traffic sign recognition
- Central locking including remote control integrated into the key



Extra equipment

- Airbag, rear side airbags
- Parking PLUS equipment package
- Anti-theft alarm system including safe system (interior monitoring and tilt sensor)
- Luggage net partition
- Paint finish: Metallic
- Mobile charging station "iV Universal Charger" with interchangeable connection adapters
- Package: Convenience PLUS in conjunction with anti-theft alarm system (KESY (Keyless Entry and Start-Stop System) incl. Safe System - Phonebox with inductive charging function (connection via the external antenna) - Sunset tinted windows incl. acoustic side glazing at the front - Extended acoustic measures - Driver fatigue detection - Electric tailgate operation incl. comfort opening - Removable glasses compartment - Free remote vehicle access for 3 years)
- Package: Infotainment BASIC (Navigation system - Infotainment Online 3 years (Online map updates for navigation; Display of weather data, news, headlines; Charging station and parking space search; Online POI search; Online destination import))
- Package: Light & Sight PLUS (LED matrix headlights incl. AFS and dynamic high beam assist - headlight cleaning system - full LED taillights with animated turn signals - illuminated front grille "Crystal Face")
- Panoramic sunroof, electric (deletion of the glasses compartment in the headliner)
- Wheels: 19" Regulus AERO alloy wheels, anthracite polished (8Jx19, tires 235/55 R19 101T front, 255/50 R19 103T rear)
- Swiveling trailer hitch (including trailer stabilization)
- Design Selection Suite (leather seat covers - "Piano black" trim strips - grey headliner - front center armrest including storage compartment - rear center armrest with cup holders and pass-through - floor mats - multi-coloured ambient lighting for instrument panel and front door trim - footwell lighting and illuminated door handle recesses - umbrella)
- Package: Driving Assistance PLUS (Predictive Adaptive Cruise Control (pACC) incl. Traffic Jam Assist - Lane Change and Parking Assist - Proactive Occupant Protection - Traveller Assistance System incl. Emergency Assist (Traffic Sign Recognition, Adaptive Lane Keeping Assist))
- Package: Family PLUS (Sun protection roller blind for rear side windows - 230V socket and 2 x USB-C charging ports in the rear - Storage box for rear seat row - Folding tables on the front seat backrests - Sleeping package (Sleeping headrests for the outer rear seats and blanket))
- Package: Climate Control PLUS (Heated front and outer rear seats - Heated windshield washer nozzles - Climatronic air conditioning (3-zone), fully automatic, separately adjustable for driver, front passenger and rear passengers including odor and particle filter - Heated windshield)
- Package: Transport (Net program in the trunk incl. charging cable bag - Variable loading floor in the trunk - Remote release of the rear seat backrests in the trunk - Cargo elements in the trunk)
- Seating Comfort Plus
- heat pump

Brief expert findings

Documents submitted	At the time of the inspection, the vehicle registration certificate Part 2 (title) was available, but the vehicle registration certificate Part 1 (document) was not. (Copy)
VIN comparison	The vehicle identification number (VIN) was read from the vehicle and its conformity with the submitted documents was confirmed by the undersigned during the inspection.
Inspection	The inspection conditions were sufficient for the assessment of the vehicle. No lifting equipment or pit was available for inspecting the vehicle. Therefore, inspection of the vehicle's underside was only possible to a limited extent.
Test drive	No test drive/shunting maneuver was carried out during the inspection of the vehicle.
Engine function test	An engine test run was performed.

Value reducing factors

No.	Component group	Description
1	Door - front right side	Door edge - Scratch(es) - Smart repair
2	Engine	Engine cover (+ Dichtung) - Damage caused by marten / rodent - Replace



Order/Scope of Order

An order was placed to prepare a sales report for the described vehicle. This report includes the following:

- Description of key vehicle information
- Documentation of equipment features
(Delivery by third-party service providers)
- Documentation of damage, defects, missing parts
- Documentation of prior damage, unrepaired prior damage, repainting
- A brief visual or functional inspection of the equipment details, if possible.
(Functional testing of driver assistance systems is not included in the scope of services!)
- a photographic documentation of the vehicle

Basis for the order

This product is based on the guidelines for vehicle returns and valuations published by Alphabet Fleet GmbH. The expert makes the specific findings in each individual case objectively, within the framework of the prescribed standards, based on their own expertise.

The vehicle inspection takes place in a fully assembled, unassembled state.

Damage or defects that can only be detected during disassembly/diagnostic work or through further investigation remain within the realm of prognostic risk. An increased risk exists due to concealed defects caused by fraudulent misrepresentation and which were not identifiable by the expert.

Damage or defects resulting from normal use or wear and tear of the vehicle will be accepted in accordance with the applicable standard.

There was no explicit identification or monetary consideration of the expected features within the product.

Features which, in their nature and extent, slightly exceed normal use but do not constitute unacceptable damage, will be documented and indicated as signs of wear, if applicable.

Damage or defects that, according to the applicable standard, can no longer be attributed to normal use or wear and tear are listed under "Value Reducing Factors" in the product description.

Depending on the product specification, a monetary ID can be provided. If this takes place, the costs can be 100% or pro rata depending on the vehicle's age and mileage.

Previous damages

No apparent prior damage that had been repaired could be found on the vehicle.

Comments

- Die Unterbodenbesichtigung war nur ebenerdig & eingeschränkt möglich. Mehrkosten möglich.
- Winterradsatz ist kein Bestandteil des Auslieferungsumfangs.



Figure 1: Diagonal front (left)



Figure 2: Diagonal front (right)



Figure 3: Diagonal rear (left)



Figure 4: Diagonal rear (right)



Figure 5: Interior - front



Figure 6: Interior - rear



Figure 7: Instrument cluster



Figure 8: Instrument panel



Figure 9: Interior 360° view



Figure 10: Cargo area

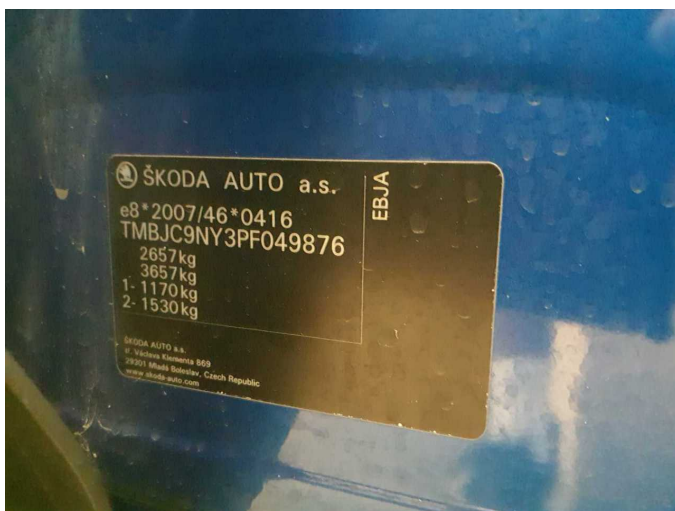


Figure 11: VIN



Figure 12: Mounted tyres



Figure 13: Documents

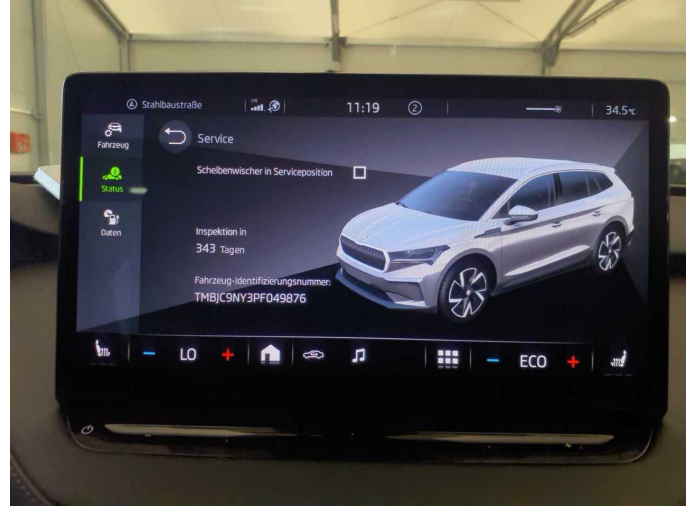


Figure 14: Documents



Figure 15: Additional tyres



Figure 16: Navigation



Figure 17: Misc.



Figure 18: Misc.



Figure 19: Misc.



Figure 20: Misc.



Figure 21: Misc.



Figure 22: Misc.



Figure 23: Misc.



Figure 24: Misc.



Figure 25: Misc.

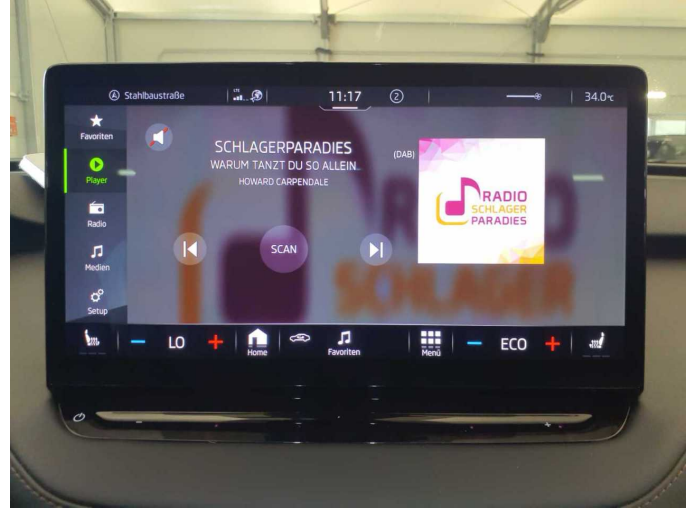


Figure 26: Misc.



Figure 27: Misc.



Figure 28: Misc.



Figure 29: Misc.



Figure 30: Misc.



Figure 31: Misc.



Figure 32: Misc.



Figure 33: Misc.



Figure 34: Misc.

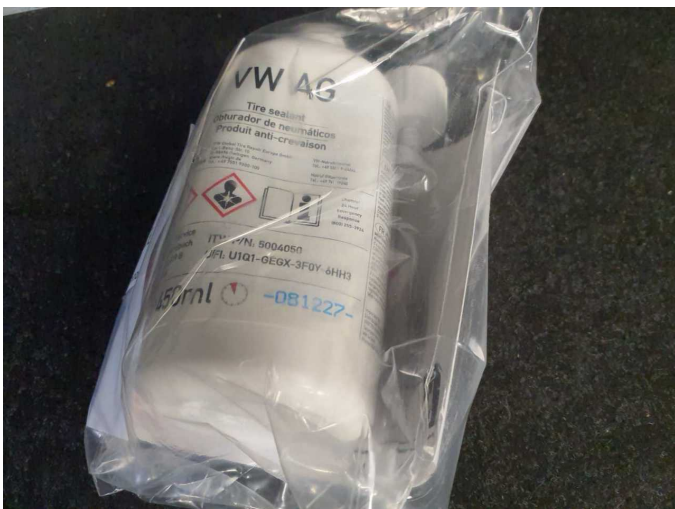


Figure 35: Misc.



Figure 36: Misc.



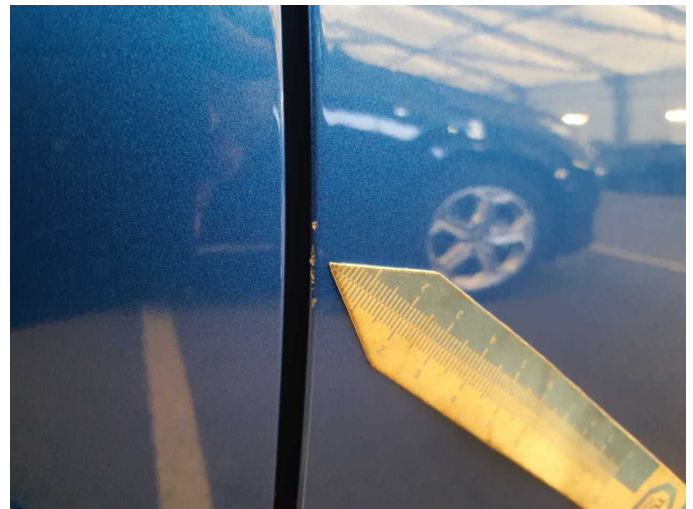
Figure 37: Misc.



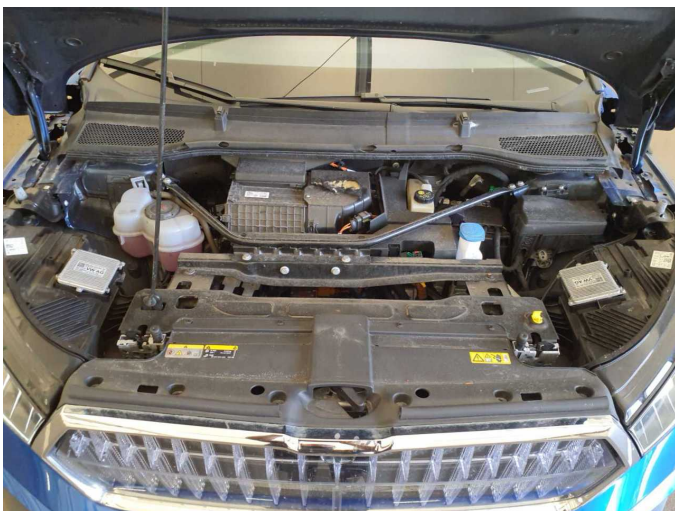
Figure 38: Misc.



Damage 1: Door - front right side: Door edge - Scratch(es) - Smart repair



Damage 1: Door - front right side: Door edge - Scratch(es) - Smart repair



Damage 2: Engine: Engine cover (+ Dichtung) - Damage caused by marten / rodent - Replace



Damage 2: Engine: Engine cover (+ Dichtung) - Damage caused by marten / rodent - Replace



Damage 2: Engine: Engine cover (+ Dichtung) - Damage caused by marten / rodent - Replace



Damage 2: Engine: Engine cover (+ Dichtung) - Damage caused by marten / rodent - Replace



Damage 2: Engine: Engine cover (+ Dichtung) - Damage caused by marten / rodent - Replace



Damage 2: Engine: Engine cover (+ Dichtung) - Damage caused by marten / rodent - Replace



Damage 2: Engine: Engine cover (+ Dichtung) - Damage caused by marten / rodent - Replace



Wartungshistorie

(gemäß Auftraggeber Informationen)

Fahrgestellnummer: TMBJC9NY3PF049876

Hersteller / Modell: SKODA SKODA Enyaq iV 80

Datum	KM-Stand	Beschreibung
04.06.2025	30.738	Bremsflüssigkeit; Bremsflüssigkeit ern; Regelwartungsdienst