

## Expertise

Protocol number: 45990412  
Order No. / Reference: 26451713  
Inspection date: 15 Jun 2026

Manufacturer: Opel

Model: Vivaro 2.0 D Cargo L EHZ Autm. Elegance

VIN: VXEVFEHZ7N7039844



### Vehicle details

#### Manufacturer / Type / Model / Equipment

Opel Vivaro 2.0 D Cargo L EHZ Autm. Elegance

**Vehicle Identification number** VXEVFEHZ7N7039844

**Mileage (Read)** 70,885 km

**First registration** 29 Jul 2022

**Number of holders** 1

**Power / Engine displacement** 130 kw / 2,000 ccm

**Fuel type / Cylinder** Diesel / 4

**Gearbox / Number of gears** Automatic / 8

**Type of drive** Front drive

**Type of vehicle** Van

**Colour / colour code** Jadeweiß

**Doors / Seats** 4 / 3

**Upholstery type** Cloth

**Colour of upholstery** Grey-Black



## Vehicle details

<b>Maintenance booklet / proof</b>	digital proof / complete	<b>Next maintenance in</b>	47,320 km
<b>Last service on / at</b>	05/2026 at 70,679 km		
<b>Key is / should be</b>	2 / 2	<b>FZG documents</b>	ZB#2 (B) was available (copy), ZB#1 (S) was not available.
		<b>Letter No.</b>	GN168776
<b>Previous damage / Accident</b>	None detectable	<b>Repainting</b>	None detectable
<b>Inspection conditions</b>	sufficient	<b>Lifting equipment / pit</b>	yes
<b>Test drive</b>	Not performed	<b>Engine function test</b>	Performed
<b>Manufacturer key number/ type code number</b>	3003 / AXZ 01227		
<b>Emission standard</b>	EURO6;WLTP;AR;PI/CI;N1 III, N2	<b>fine dust sticker</b>	
<b>Permitted total weight</b>	3,100 kg	<b>Empty weight</b>	

## Tyres

### Mounted tyres

#	Tyre size	Type of tyre	Manufacturer	Tread depth
1)	215/65 R16 106T	Summer tyres on Steel rim with wheel cover	Michelin	5mm / 5mm
2)	215/65 R16 106T	Summer tyres on Steel rim with wheel cover	Michelin	5mm / 5mm

### Additional tyres

#	Tyre size	Type of tyre	Manufacturer	Tread depth
1)	215/65 R16 109T	Winter tyres on Steel	Maxxis	6mm / 6mm
2)	215/65 R16 109T	Winter tyres on Steel	Maxxis	7mm / 7mm

### Replacement

Typ	Tyre size	Type of tyre	Manufacturer	Tread depth
	Tirefit	Expiration date 06/2026		

**Legend: Tread depth information for the left tire is listed first, for the right tire it is listed second on the axle in the direction of travel.**



## Equipment

### Standard equipment

- Storage compartments
- Driver and passenger side airbags
- Exterior mirrors, electrically folding, heated and adjustable
- Exterior mirror housings in black
- Hill Start Assist
- On-board computer
- Diesel particulate filter, maintenance-free
- Three-point seat belts in all seats
- Electronic Stability Program (ESP Plus)
- Speed controller and limiter
- Grab handle in the first row of seats, passenger side
- Air conditioning, front with particle and odor filter
- Steering column, adjustable for reach and height
- Fatigue detection level 1 coffee break
- Package: Driver Assistance Package 1
- Radio: Multimedia radio with 7" touchscreen color display
- Wheels: Tire repair kit
- Wheels: Steel wheels 7 J x 16 with wheel hub cover
- Side protection strips
- Visibility equipment
- Sun visors, driver and passenger
- 12V power outlet in the cargo area and in the lower glove compartment
- Partition wall: closed, without windows
- Doors: Rear wing doors, sheet metal with a 180° opening angle
- Electronic immobilizer
- Central locking with remote control
- Ignition key (2), foldable

### Extra equipment

- Steering wheel: Multifunction leather steering wheel
- Radio: Multimedia Navi Pro with 7" color touchscreen display and voice control for audio, telephone and navigation (automatic music recognition (title, album, artist, cover) for audio devices with USB connection, Bluetooth audio streaming, hands-free calling via Bluetooth interface, up to 10 mobile phones can be paired, image display via USB interface, navigation system with integrated memory, OpelConnect with telematics services, map of Europe, 3D map display, TMC GPS module, smartphone integration via Apple CarPlay and Android Auto, 1 USB interface, dual tuner, graphic equalizer)
- Heated driver's seat
- Sortimo complete installation
- Meltem fabric grey TAVN
- Doors: Rear wing doors, glazed with a 180° opening angle (and heated rear window wipers)

- ABS including brake assist and adaptive brake light
- Anti-lock braking system (ABS) with cornering brake control and brake assist
- Battery discharge protection
- Floor covering: Cargo area floor, painted
- third brake light
- Tachometer
- Electric parking brake
- Electric front windows
- Transmission: 8-speed automatic
- Glove compartment closed at the top
- Steering wheel: Comfort steering wheel (PU), flattened at the bottom
- Fog light
- Parkpilot, front and rear parking aid
- Radio accessories: Digital radio reception DAB+ (Digital Audio Broadcasting)
- Side impact protection
- Speed-sensitive power steering
- Seats: Comfort driver's seat and double passenger seat
- 12-volt power outlet in the center console
- Daytime running light
- Traction control with engine and brake intervention (TC Plus)
- Doors: Sliding door, passenger side
- Lashing eyes (8) in the cargo area
- Heat-insulating glazing, tinted
- Payload increased by +300 kg

- Package: Design package (front and rear bumpers in body color - door handles in body color - exterior mirror housings in black - exterior mirrors, electrically adjustable, heated and folding - side protection strip in body color - fog lights - LED daytime running lights)
- 180° panoramic reversing camera (displays the area behind the vehicle up to 180 degrees, including steering guidelines, when reverse gear is engaged, in the color display of the infotainment system.)
- Seats: Comfort driver's seat and multifunctional double passenger seat (comfort driver's seat adjustable in 6 ways, with armrest and lumbar support - multifunctional double passenger seat with pass-through function and DIN A4 desk - headrests, height adjustable)
- Partition wall: closed with window (FlexCargo function)



## Brief expert findings

Documents submitted	At the time of the inspection, the vehicle registration certificate Part 2 (title) was available, but the vehicle registration certificate Part 1 (document) was not. (Copy)
VIN comparison	The vehicle identification number (VIN) was read from the vehicle and its conformity with the submitted documents was confirmed by the undersigned during the inspection.
Inspection	The inspection conditions were sufficient for the assessment of the vehicle. Lifting equipment and/or a pit were available for examining the vehicle.
Test drive	No test drive/shunting maneuver was carried out during the inspection of the vehicle.
Engine function test	An engine test run was performed.

## Value reducing factors

No.	Component group	Description
1	Door - front left side	Door handle - outside - Scratch(es) - Smart repair
2	Door - rear right side	Brightware - lower - Scratch(es) - Smart repair
3	Rear bumper	Rear bumper - Scratch(es) - Smart repair
4	Trim / covers	Trim / covers - Scratch(es) - Smart repair
5	Steering system	Steering wheel - Scratch(es) - Smart repair
6	Engine	Engine - Leaking - Perform diagnosis
7	Boot lid / rear door	Trim rear door - plywood - lower - Broken / torn - Replace
8	Sill - right side	Sill - Deformed - Repair and paint
9	Front bumper	Front bumper - Dent / paintcoat damage - Paint
10	Side panel - rear right side	Sill - Dent / paintcoat damage - Repair and paint
11	Sliding door, right	Sliding door - Scratch(es) - Paint

## Wear and tear

No.	Component group	Description
1	Door - front right side	Brightware - lower - Scratch(es) - No deduction
2	Side panel - rear left side	Side panel (Zierleiste) - Scratch(es) - No deduction
3	Bonnet	Bonnet - Stone chips - No deduction
4	Vehicle glazing	Windscreen - Stone chips - No deduction

The vehicle shows signs of wear and tear commensurate with its age and use.

## Order/Scope of Order

An order was placed to prepare a sales report for the described vehicle. This report includes the following:

- Description of key vehicle information
- Documentation of equipment features  
(*Delivery by third-party service providers*)
- Documentation of damage, defects, missing parts
- Documentation of prior damage, unrepaired prior damage, repainting
- A brief visual or functional inspection of the equipment details, if possible.  
(*Functional testing of driver assistance systems is not included in the scope of services!*)
- a photographic documentation of the vehicle



## Basis for the order

This product is based on the guidelines for vehicle returns and valuations of light commercial vehicles published by Alphabet Fleet Management GmbH. The expert makes the specific findings in each individual case objectively, within the framework of the prescribed standards, based on their own expertise.

The vehicle inspection takes place in a fully assembled, unassembled state.

Damage or defects that can only be detected during disassembly/diagnostic work or through further investigation remain within the realm of prognostic risk. An increased risk exists due to concealed defects caused by fraudulent misrepresentation and which were not identifiable by the expert.

Damage or defects resulting from normal use or wear and tear of the vehicle will be accepted in accordance with the applicable standard.

There was no explicit identification or monetary consideration of the expected features within the product.

Features which, in their nature and extent, slightly exceed normal use but do not constitute unacceptable damage, will be documented and indicated as signs of wear, if applicable.

Damage or defects that, according to the applicable standard, can no longer be attributed to normal use or wear and tear are listed under "Value Reducing Factors" in the product description.

Depending on the product specification, a monetary ID can be provided. If this takes place, the costs can be 100% d or pro rata depending on the vehicle's age and mileage.

## Previous damages

No apparent prior damage that had been repaired could be found on the vehicle.

## Comments

Der beiliegende Winterradsatz ist kein Bestandteil der Ausstattung.



Figure 1: Diagonal front (left)



Figure 2: Diagonal front (right)



Figure 3: Diagonal rear (left)



Figure 4: Diagonal rear (right)



Figure 5: Interior - front



Figure 6: Interior - rear



Figure 7: Instrument cluster



Figure 8: Instrument panel



Figure 9: Interior 360° view



Figure 10: Cargo area

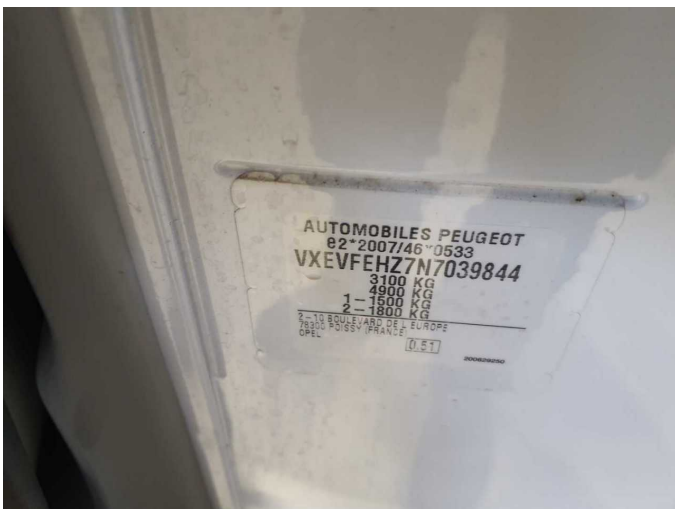


Figure 11: VIN



Figure 12: Mounted tyres



Figure 13: Documents



Figure 14: Additional tyres



Figure 15: Additional tyres



Figure 16: Additional tyres



Figure 17: Navigation



Figure 18: Misc.



Figure 19: Misc.



Figure 20: Misc.



Figure 21: Misc.



Figure 22: Misc.



Figure 23: Misc.



Figure 24: Misc.



Figure 25: Misc.



Figure 26: Misc.



Figure 27: Misc.



Figure 28: Misc.



Figure 29: Misc.



Figure 30: Misc.



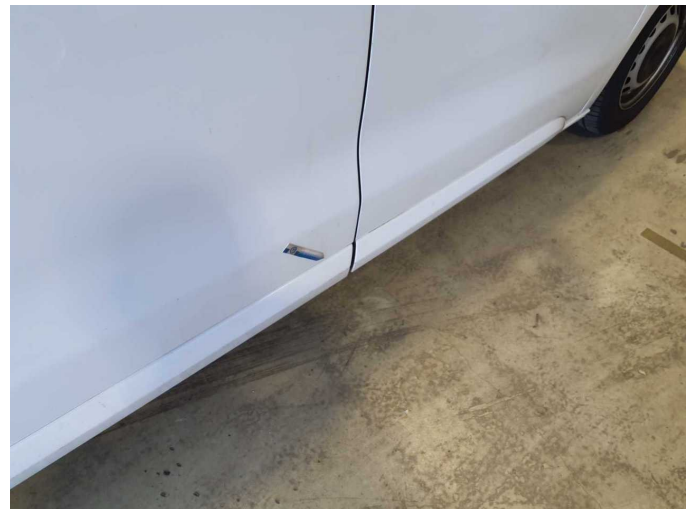
Figure 31: Misc.



Damage 1: Door - front left side: Door handle - outside - Scratch(es) - Smart repair



Damage 1: Door - front left side: Door handle - outside - Scratch(es) - Smart repair



Damage 2: Door - rear right side: Brightware - lower - Scratch(es) - Smart repair



Damage 2: Door - rear right side: Brightware - lower - Scratch(es) - Smart repair



Damage 3: Rear bumper: Rear bumper - Scratch(es) - Smart repair



**Damage 3:** Rear bumper: Rear bumper - Scratch(es) - Smart repair



**Damage 4:** Trim / covers: Trim / covers - Scratch(es) - Smart repair



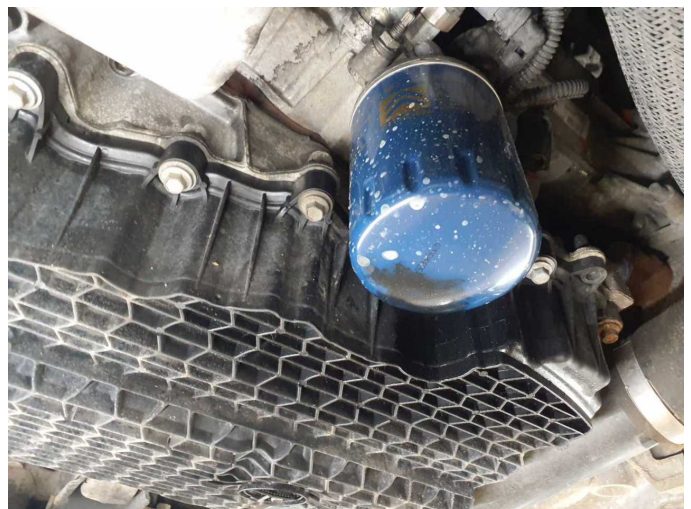
**Damage 4:** Trim / covers: Trim / covers - Scratch(es) - Smart repair



**Damage 5:** Steering system: Steering wheel - Scratch(es) - Smart repair



**Damage 5:** Steering system: Steering wheel - Scratch(es) - Smart repair



**Damage 6:** Engine: Engine - Leaking - Perform diagnosis



**Damage 7:** Boot lid / rear door: Trim rear door - plywood - lower - Broken / torn - Replace



**Damage 7:** Boot lid / rear door: Trim rear door - plywood - lower - Broken / torn - Replace



**Damage 8:** Sill - right side: Sill - Deformed - Repair and paint



**Damage 8:** Sill - right side: Sill - Deformed - Repair and paint



**Damage 8:** Sill - right side: Sill - Deformed - Repair and paint



**Damage 8:** Sill - right side: Sill - Deformed - Repair and paint



**Damage 9:** Front bumper: Front bumper - Dent / paintcoat damage - Paint



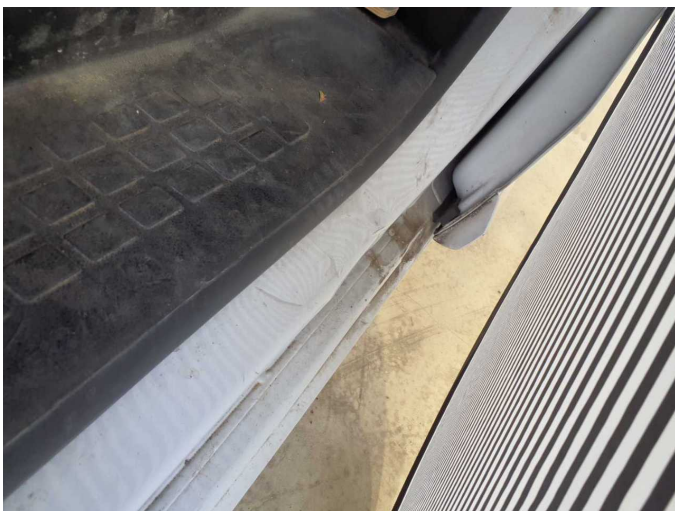
**Damage 9:** Front bumper: Front bumper - Dent / paintcoat damage - Paint



**Damage 9:** Front bumper: Front bumper - Dent / paintcoat damage - Paint



**Damage 10:** Side panel - rear right side: Sill - Dent / paintcoat damage - Repair and paint



**Damage 10:** Side panel - rear right side: Sill - Dent / paintcoat damage - Repair and paint



**Damage 10:** Side panel - rear right side: Sill - Dent / paintcoat damage - Repair and paint



**Damage 11:** Sliding door, right: Sliding door - Scratch(es) - Paint



**Damage 11:** Sliding door, right: Sliding door - Scratch(es) - Paint



**Damage 11:** Sliding door, right: Sliding door - Scratch(es) - Paint



# Wartungshistorie

(gemäß Auftraggeber Informationen)

Fahrgestellnummer: VXEVFEHZ7N7039844

Hersteller / Modell: OPEL OPEL Vivaro 2.0 D Cargo L EHZ Autm. Elegance

Datum	KM-Stand	Beschreibung
07.05.2026	70.679	Bremse Sonstiges; Bremsflüssigkeit; Bremsflüssigkeit ern; Bremsklötze hinten; Bremsklötze vorne; Bremsscheiben hinten; Bremsscheiben vorne; Kraftstofffilter ern; Luftfiltereinsatz ern; Motoröl b. Wartung; Ölfilter ern; Regelwartungsdienst; Wartung Sonstiges
10.10.2025	65.860	Systemtest/Eigendiagnose
04.07.2025	57.826	HU + AU
23.11.2023	28.139	Motoröl b. Wartung; Ölfilter ern; Ölwechsel; Wartung Sonstiges