

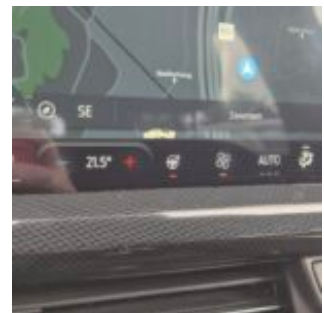
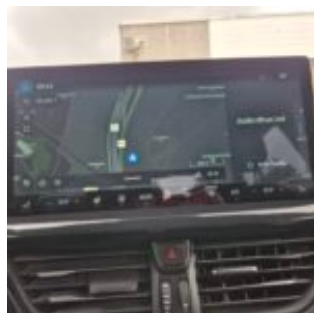
## 2-DNT-828

2-DNT-828 · ST-line 125pk 92kw mHEV M6 5d · 15 June 2026 · Zaventem (BE)

### Specifications

License Plate Number	2-DNT-828	Fuel Type	Hybrid Gasoline
Manufacturer	FORD	VIN	WF0NXXGCHNPL83916
Model	Focus	Cylinder Capacity	999 <sup>cm<sup>3</sup></sup>
Model Versions	ST-line 125pk 92kw mHEV M6 5d	Transmission Type	Handmatig geschakelde transmissie
Body Type	5 door hatchback	First Admission	09-05-2023
Color	Silver	Odometer	86.174 <sup>Km</sup>
Paint Type	Metallic	Numer Of Keys	2
Production Year	2023	Interior	Black
KW	92	Number Headrests	5

# Images





## Accessories

ABS

Airbags

Alloy wheels

Audio System

Automatic air conditioning

Bluetooth car kit

Central door locking

Centre armrest

Cruise control

Electric rear windows

Electric windows front

Electrically adjustable exterior mirrors

Front & rear parking sensors

Leather steering wheel

Navigation system

Roller cover / parcel shelf

Seat heating

Steering wheel multifunction

Steeringwheel - Heated

Windscreen - Heated

## Condition

Condition exterior Adequate

Condition interior Adequate

Last Maintenance Unknown

Previous Repairs

Unknown

## Tire Specifications

Tire	Profile	Brand	Width	Aspect Ratio	Radial	Type
Front Left	5 <sup>mm</sup>	Goodyear	215 <sup>mm</sup>	50 <sup>mm</sup>	17 <sup>inch</sup>	All Season
Rear Left	6 <sup>mm</sup>	Goodyear	215 <sup>mm</sup>	50 <sup>mm</sup>	17 <sup>inch</sup>	All Season
Front Right	5 <sup>mm</sup>	Goodyear	215 <sup>mm</sup>	50 <sup>mm</sup>	17 <sup>inch</sup>	All Season
Rear Right	6 <sup>mm</sup>	Goodyear	215 <sup>mm</sup>	50 <sup>mm</sup>	17 <sup>inch</sup>	All Season
Spare Tire Type	Compressor					

**Damages**



Damage Part	Damage Type	Repair Type	Acceptable
Reardoor - Left	Stonechipping	Touch-up / Polish	No



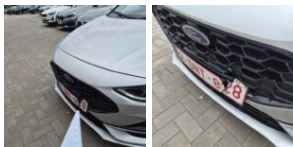
Damage Part	Damage Type	Repair Type	Acceptable
Frontdoor - Left	Stonechipping	Touch-up / Polish	No



Damage Part	Damage Type	Notes	Repair Type	Acceptable
Front	Dislocated / Loose	Zie foto's mogelijk verborgen schade	Panelbeating & Spray	



Damage Part	Damage Type	Repair Type	Acceptable
Grille	Broken	Replace	No



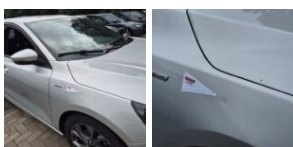
Damage Part	Damage Type	Notes	Repair Type	Acceptable
Bumper - Front	Broken	Kentekenplaat en houder	Replace	No



Damage Part	Damage Type	Repair Type	Acceptable
Bumper - Front	small dents / small scratches	Panelbeating & Spray	No



Damage Part	Damage Type	Repair Type	Acceptable
Alloy - Right Front	Damaged	Rim repair	No



Damage Part	Damage Type	Repair Type	Acceptable
Fender - Front Right	Small dent(s)	Restyle / Touch-up	No



Damage Part	Damage Type	Notes	Repair Type	Acceptable
Frontdoor - Right	Scratch(es)	Deurgreep	Spray	No



Damage Part	Damage Type	Repair Type	Acceptable
Frontdoor - Right	Dent(s) & Scratch(es)	Panelbeating & Spray	No



Damage Part	Damage Type	Repair Type	Acceptable
Skirt - Right	small dents / small scratches	Panelbeating & Spray	No



Damage Part	Damage Type	Repair Type	Acceptable
Reardoor - Right	Dent(s) & Scratch(es)	Panelbeating & Spray	No



Damage Part	Damage Type	Repair Type	Acceptable
spoiler RB	Broken	Replace	No



Damage Part	Damage Type	Repair Type	Acceptable
Bumper - Rear	Broken	Replace & Spray	No



Damage Part	Damage Type	Repair Type	Acceptable
Interior	Stains & dirt	Cleaning	No