

Expertise

Protocol number: 46052779
Order No. / Reference: 26446115
Inspection date: 17 Jun 2026

Manufacturer: Skoda

Model: Superb Combi 2.0 TDI DSG Premium Edition

VIN: TMBJH7NP6N7036043



Vehicle details

Manufacturer / Type / Model / Equipment

Skoda Superb Combi 2.0 TDI DSG Premium Edition

Vehicle Identification number TMBJH7NP6N7036043

Mileage (Read) 198,998 km

First registration 3 May 2022

Number of holders 1

Next periodical technical inspection 05/2027
(Report on hand)

Power / Engine displacement 110 kw / 1,968 ccm

Fuel type / Cylinder Diesel / 4

Gearbox / Number of gears Automatic / 7

Type of drive Front drive

Type of vehicle Station wagon

Colour / colour code Black-Magic Perleffekt

Doors / Seats 5 / 5

Upholstery type Leather

Colour of upholstery Black



Vehicle details

Maintenance booklet / proof	digital proof / complete	Next maintenance in	8,500 km
Last service on / at	06/2025 at 177,940 km		
Key is / should be	2 / 2	FZG documents	ZB#2 (B) was available (copy), ZB#1 (S) was not available.
		Letter No.	GJ904942
Previous damage / Accident	Detectable	Repainting	None detectable
Inspection conditions	sufficient	Lifting equipment / pit	No
Test drive	Not performed	Engine function test	Performed
Manufacturer key number/ type code number	8004 / APL 01677		
Emission standard	EURO6;WLTP;AP;PI/CI; M, N1 I	fine dust sticker	
Permitted total weight	2,196 kg	Empty weight	

Tyres

Mounted tyres				
#	Tyre size	Type of tyre	Manufacturer	Tread depth
1)	215/55 R17 94W	Summer tyres on Light alloy	Pirelli	5mm / 5mm
2)	215/55 R17 94W	Summer tyres on Light alloy	Pirelli	6mm / 6mm
Additional tyres				
#	Tyre size	Type of tyre	Manufacturer	Tread depth
1)	215/60 R16 99H	Winter tyres on Light alloy	Bridgestone	5mm / 5mm
2)	215/60 R16 99H	Winter tyres on Light alloy	Bridgestone	5mm / 5mm
Replacement				
Typ	Tyre size	Type of tyre	Manufacturer	Tread depth
	Tirefit	Expiration date 02/2026		

Legend: Tread depth information for the left tire is listed first, for the right tire it is listed second on the axle in the direction of travel.

Equipment

Standard equipment

- Closed storage compartments behind the wheel arches in the trunk, including cargo elements
- Airbag, driver's knee airbag
- Airbag, front side airbags
- Traction control (ASR)
- Exterior mirrors and door handles in body color
- Illuminated glove compartment
- Hydraulic brake assist (HBA)
- Roof rails, anodized
- Diesel particulate filter and SCR catalyst
- Third brake light
- Electric tailgate opening
- Electronic transverse differential lock (XDS+)
- Driving light assistant and rain sensor
- Electric windows front and rear, including anti-pinch protection and child safety lock
- Front and rear footwell lighting
- Transmission: 7-speed dual-clutch transmission (DSG)
- Tinted windows
- Rear window wiper including windshield washer system
- Kessy, keyless entry and start-stop system
- Air Care Climatronic air conditioning system (3 zones)
- Comfort opening for the electric tailgate
- Metal loading sill protector
- Remote release of the rear seat backrests in the trunk
- Steering wheel: height and reach adjustable
- Reading lights at the front and rear of the headliner
- Rear center armrest with cup holders and pass-through option
- Color multifunction display in the instrument cluster
- LED fog lights with integrated cornering lights
- Upholstery: Glamour leather interior
- Radio accessories: 2 USB-A ports in the center console
- Radio accessories: In-car communication
- Radio accessories: Wireless SmartLink for Apple CarPlay
- Tire mobility kit
- Heated windshield washer nozzles
- Seat: Massage function for electric driver's seat
- Seats: Ventilated front seats for leather interiors
- Seats: Electrically adjustable front seats with memory function
- Seats: Height-adjustable front seats
- SKODA Care Connect
- Start/stop system including brake energy recuperation
- 12V socket in the trunk
- Telephone: Convenient Bluetooth hands-free phone system
- Lashing eyes in the trunk
- Central locking with remote control
- Storage compartments
- Airbag, driver and switchable passenger airbag
- Airbag, head airbags
- Anti-lock braking system (ABS)
- Electrically adjustable and heated exterior mirrors
- Electrically folding exterior mirrors
- Hill start assist
- Grey headliner
- Decorative inlay Argenzo Zebrano
- Tachometer
- Dynamic Light Assistant (Masked Continuous High Beam)
- Electronic parking brake including auto-hold function
- Electronic Stability Control (ESC)
- Chassis: Sport chassis (15 mm lowering)
- Front radar assistant including city emergency braking function
- Cruise control system (cruise control) including speed limiter
- Heated rear window
- ISOFIX preparation on the outer rear seats, including top tether
- Boot cover, roll-up and removable, semi-automatic
- Front and rear headrests are height-adjustable.
- LED ambient lighting
- Steering wheel: 2-spoke leather steering wheel with multifunction buttons
- Matrix LED headlights
- Front center armrest with storage compartment
- Engine drag torque control (MSR)
- Multi-collision brake
- Rear parking sensors
- Progressive steering
- Radio accessories: Digital radio reception DAB+
- Radio accessories: SmartLink+
- Tire pressure monitoring
- Wheels: 17" Drakon alloy wheels
- Superb seat belts
- Seats: Heated front seats
- Seats: Adjustable lumbar support in the front seats
- Seats: Electric operation of the front passenger seat from the rear
- Seats: Rear seat backrest split 60:40, foldable
- Sun visor on driver and passenger side with illuminated make-up mirror
- 12V socket in the center console, front and rear
- Textile floor mats
- Chrome-plated elements
- Immobiliser



Extra equipment

- Driving profile selection including customizable key (Normal, Eco, Sport, Individual)
- Front and rear parking sensors
- Package: Traveller (ACC - Traffic Sign Recognition - Lane Keeping Assist with Adaptive Lane Guidance - Digital Instrument Cluster)
- Paint finish: Pearl effect
- Steering wheel: Heated steering wheel (2 spokes) (with paddle shifters)
- Swiveling trailer hitch including trailer stabilization
- Package: Business Amundsen (Combi) (Amundsen dynamic radio navigation system - 8" capacitive touchscreen in glass design - color Maxi-Dot display - Wi-Fi hotspot (uses the data connection of the paired mobile phone) - voice control - phone box with inductive charging function (connection via external antenna) - driver fatigue detection - 230 V socket and USB ports, tablet holder in the rear - Sunset (dark tinted rear window and rear side windows) - Infotainment Online subscription (3 years) - luggage net partition)

Brief expert findings

Documents submitted	At the time of the inspection, the vehicle registration certificate Part 2 (title) was available, but the vehicle registration certificate Part 1 (document) was not. (Copy)
VIN comparison	The vehicle identification number (VIN) was read from the vehicle and its conformity with the submitted documents was confirmed by the undersigned during the inspection.
Inspection	The inspection conditions were sufficient for the assessment of the vehicle. No lifting equipment or pit was available for inspecting the vehicle. Therefore, inspection of the vehicle's underside was only possible to a limited extent.
Test drive	No test drive/shunting maneuver was carried out during the inspection of the vehicle.
Engine function test	An engine test run was performed.

Value reducing factors

No.	Component group	Description
1	Door - front right side	Door handle - outside (Harkt/Klemmt fest) - Sub-function - Replace
2	Side panel - rear right side	Side panel - Dent / paintcoat damage - Repair and paint
3	Door - front left side	Door - Scratch(es) - Paint

Wear and tear

No.	Component group	Description
1	Front bumper	Front bumper - Stone chips - No deduction
2	Bonnet	Bonnet - Stone chips - No deduction
3	Vehicle glazing	Windscreen - Stone chips - No deduction
4	Rear bumper	Rear bumper - Scratch(es) - No deduction

The vehicle shows signs of wear and tear commensurate with its age and use.

Missing parts

Description

Documents - Service book (Digitaler Ausdruck)
Equipment - Umbrella

Previous damages

No.	Previous damage	Extent of damage (Net)
1	Rear, Provided by user / customer, from 17 Dec 2022	1.585,12 €



Order/Scope of Order

An order was placed to prepare a sales report for the described vehicle. This report includes the following:

- Description of key vehicle information
- Documentation of equipment features
(Delivery by third-party service providers)
- Documentation of damage, defects, missing parts
- Documentation of prior damage, unrepaired prior damage, repainting
- A brief visual or functional inspection of the equipment details, if possible.
(Functional testing of driver assistance systems is not included in the scope of services!)
- a photographic documentation of the vehicle

Basis for the order

This product is based on the guidelines for vehicle returns and valuations published by Alphabet Fleet GmbH. The expert makes the specific findings in each individual case objectively, within the framework of the prescribed standards, based on their own expertise.

The vehicle inspection takes place in a fully assembled, unassembled state.

Damage or defects that can only be detected during disassembly/diagnostic work or through further investigation remain within the realm of prognostic risk. An increased risk exists due to concealed defects caused by fraudulent misrepresentation and which were not identifiable by the expert.

Damage or defects resulting from normal use or wear and tear of the vehicle will be accepted in accordance with the applicable standard.

There was no explicit identification or monetary consideration of the expected features within the product.

Features which, in their nature and extent, slightly exceed normal use but do not constitute unacceptable damage, will be documented and indicated as signs of wear, if applicable.

Damage or defects that, according to the applicable standard, can no longer be attributed to normal use or wear and tear are listed under "Value Reducing Factors" in the product description.

Depending on the product specification, a monetary ID can be provided. If this takes place, the costs can be 100% or pro rata depending on the vehicle's age and mileage.

Previous damages

According to available information previous damages were repaired at the vehicle. Traces of repairs, which allow conclusions about the area of repair, were not recognizable during the inspection.

Comments

- Die Unterbodenbesichtigung war nur ebenerdig & eingeschränkt möglich. Mehrkosten möglich.

- Der beiliegende Winterradsatz ist kein Bestandteil des Auslieferungsumfangs.



Figure 1: Diagonal front (left)



Figure 2: Diagonal front (right)



Figure 3: Diagonal rear (left)



Figure 4: Diagonal rear (right)



Figure 5: Interior - front



Figure 6: Interior - rear



Figure 7: Instrument cluster



Figure 8: Instrument panel



Figure 9: Interior 360° view



Figure 10: Cargo area



Figure 11: VIN



Figure 12: Mounted tyres



Figure 13: Documents



Figure 14: Documents



Figure 15: Documents



Figure 16: Additional tyres



Figure 17: Navigation



Figure 18: Misc.



Figure 19: Misc.



Figure 20: Misc.

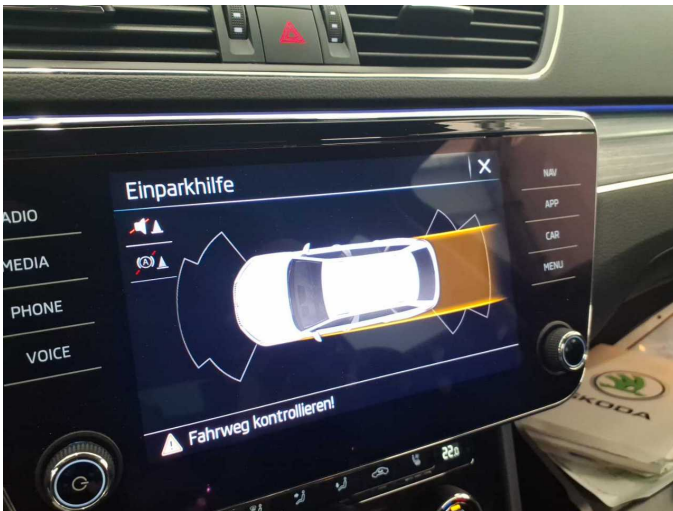


Figure 21: Misc.



Figure 22: Misc.

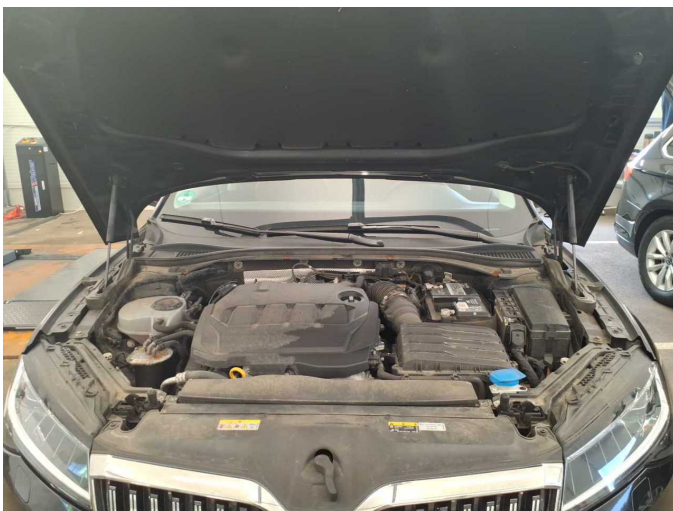


Figure 23: Misc.



Figure 24: Misc.



Figure 25: Misc.



Figure 26: Misc.

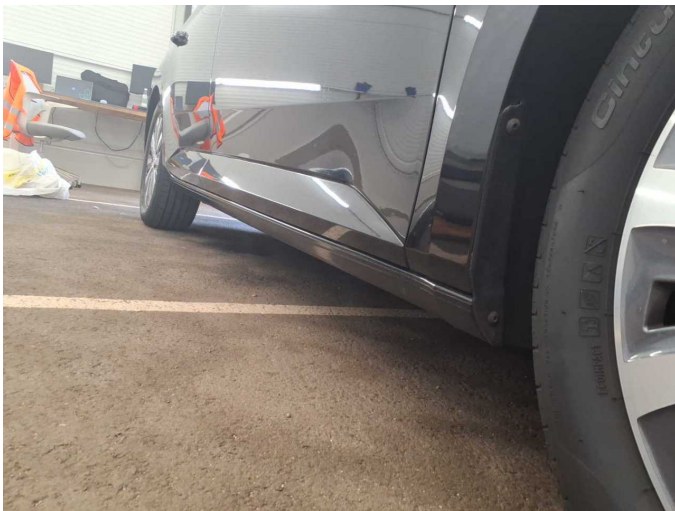


Figure 27: Misc.



Figure 28: Misc.



Figure 29: Misc.



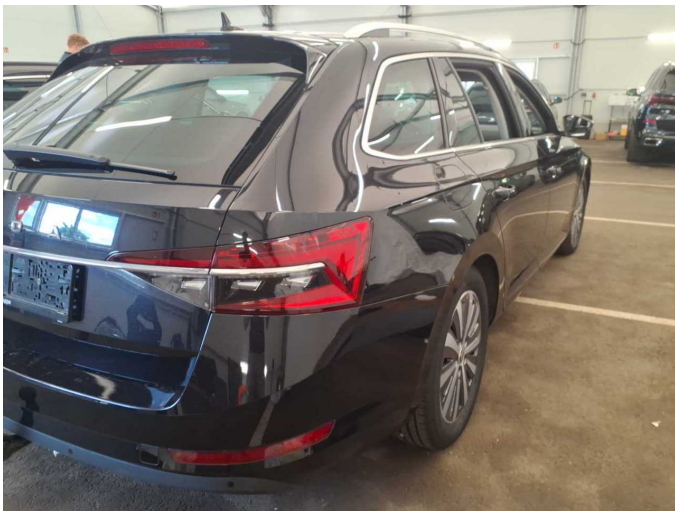
Figure 30: Misc.



Damage 1: Door - front right side: Door handle - outside (Harkt/Klemmt fest) - Sub-function - Replace



Damage 1: Door - front right side: Door handle - outside (Harkt/Klemmt fest) - Sub-function - Replace



Damage 2: Side panel - rear right side: Side panel - Dent / paintcoat damage - Repair and paint



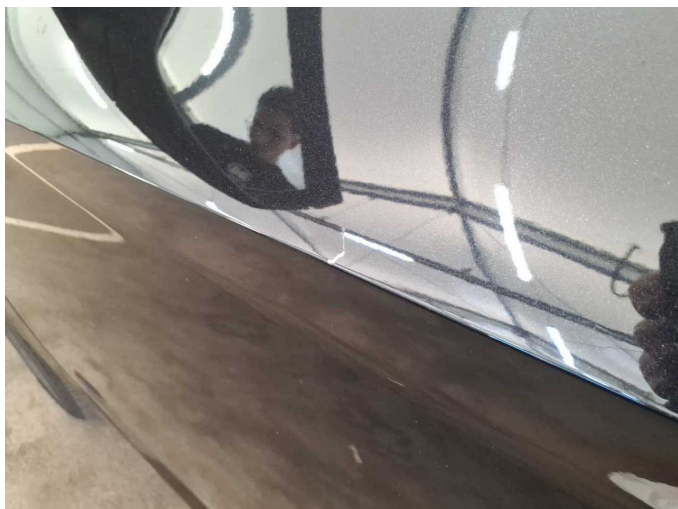
Damage 2: Side panel - rear right side: Side panel - Dent / paintcoat damage - Repair and paint



Damage 2: Side panel - rear right side: Side panel - Dent / paintcoat damage - Repair and paint



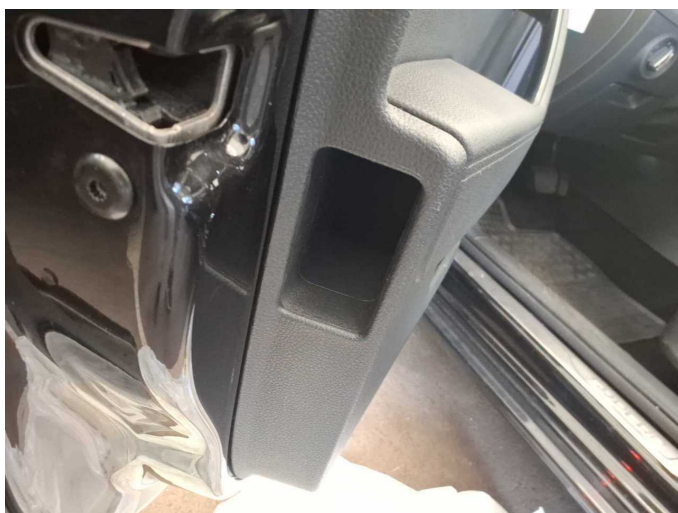
Damage 3: Door - front left side: Door - Scratch(es) - Paint



Damage 3: Door - front left side: Door - Scratch(es) - Paint



Damage 3: Door - front left side: Door - Scratch(es) - Paint



Missing part 2: Equipment: Umbrella - Missing - Replace



Wartungshistorie

(gemäß Auftraggeber Informationen)

Fahrgestellnummer: TMBJH7NP6N7036043
Hersteller / Modell: SKODA SKODA Superb Combi 2.0 TDI DSG Premium Edition

Datum	KM-Stand	Beschreibung
02.06.2025	177.940	AU; Bremse Sonstiges; Bremsklötze hinten; Bremsklötze vorne; Bremsscheiben hinten; Bremsscheiben vorne; Kraftstofffilter ern; Luftfiltereinsatz ern; Motoröl b. Wartung; Ölfilter ern; Regelwartungsdienst; Systemtest/Eigendiagnose; Wartung Sonstiges
13.01.2025	167.662	Wartung Sonstiges
25.07.2024	150.917	Motoröl b. Wartung; Ölfilter ern; Regelwartungsdienst; Wartung Sonstiges
07.03.2024	122.610	Bremsflüssigkeit; Bremsflüssigkeit ern; Getriebeöl ern/prüfen; Motoröl b. Wartung; Ölfilter ern; Regelwartungsdienst; Systemtest/Eigendiagnose; Wartung Sonstiges
10.10.2023	92.075	Bremse Sonstiges; Bremsklötze hinten; Bremsscheiben hinten; Kraftstofffilter ern; Luftfiltereinsatz ern; Motoröl b. Wartung; Ölfilter ern; Regelwartungsdienst; Wartung Sonstiges
08.09.2023	85.419	Bremse Sonstiges; Bremsklötze vorne; Bremsscheiben vorne
04.07.2023	61.673	Motoröl b. Wartung; Ölfilter ern; Regelwartungsdienst; Wartung Sonstiges
26.10.2022	30.766	Motoröl b. Wartung; Regelwartungsdienst