

Expertise

Protocol number: 45445299
Order No. / Reference: 26146297
Inspection date: 4 May 2026

Manufacturer: Mercedes-Benz

Model: 315 CDI Sprinter Extralang HA

VIN: W1V9076371P401830



Vehicle details

Manufacturer / Type / Model / Equipment

Mercedes-Benz 315 CDI Sprinter Extralang HA

Vehicle Identification number W1V9076371P401830

Mileage (Read) 122,505 km

First registration 15 Oct 2021

Number of holders 1

Next periodical technical inspection 04/2028
(Report on hand)

Power / Engine displacement 110 kw / 1,950 ccm

Fuel type / Cylinder Diesel / 4

Gearbox / Number of gears Manual / 6

Type of drive Rear drive

Type of vehicle Van

Colour / colour code ARKTIKWEISS

Doors / Seats 4 / 2

Upholstery type Cloth

Colour of upholstery Black



Vehicle details

Maintenance booklet / proof	digital proof / complete	Next maintenance in	712 Tag(e)
Last service on / at	01/2024 at 55,984 km		
Key is / should be	2 / 2	FZG documents	ZB#2 (B) was available (copy), ZB#1 (S) was not available.
		Letter No.	GE643419
Previous damage / Accident	None detectable	Repainting	Detectable
Inspection conditions	sufficient	Lifting equipment / pit	yes
Test drive	Not performed	Engine function test	Performed
Manufacturer key number/ type code number	2222 / BBA 08341		
Emission standard	EURO6;WLTP;CI;PI/CI;N1 III, N2	fine dust sticker	
Permitted total weight	3,500 kg	Empty weight	

Tyres

Mounted tyres

#	Tyre size	Type of tyre	Manufacturer	Tread depth
1)	235/65 R16 121R	All-season tyres on Steel rim with wheel cover	Sonstige	9mm / 9mm
2)	235/65 R16 121R	All-season tyres on Steel rim with wheel cover	Sonstige	9mm / 9mm

Replacement

Typ	Tyre size	Type of tyre	Manufacturer	Tread depth
E	235/65 R16 118R C	Winter tyres (Without wheel rim)	Pirelli	9 mm

Legend: Tread depth information for the left tire is listed first, for the right tire it is listed second on the axle in the direction of travel.



Equipment

Standard equipment

- Storage compartment above windshield
- Rear towing eye
- ADAPTIVE ESP (latest generation) with load- and speed-dependent driving dynamics control
- Outdoor temperature display
- Battery: fleece battery 12 V / 92 Ah
- Brake lights, adaptive
- Diesel particulate filter and SCR
- Entry handle on rear right corner pillar
- Chassis stabilization level 1
- Generator 14 V / 200 A
- Transmission: 6-speed manual ECO Gear 360
- Grab handle for entry to the cargo area sliding door on the partition wall
- KEYLESS start
- Child safety locks on doors in the passenger compartment
- Paint finish: Solid color paint
- Headlight range control
- Mercedes-Benz emergency call system
- Breakdown management
- Radio: Radio preparation
- Radio accessories: Communication module (LTE) for digital services
- Wheels: Steel rims 6.5 J x 16 (with tires 235/65 R16 C low rolling resistance tires)
- Crosswind Assist
- Seats: Passenger seat armrest
- Seats: Adjustable passenger seat
- Speedometer km/h
- First aid kit
- Pre-installation for Remote Services Plus
- Immobiliser
- Central locking with radio remote control
- Registration certificate, Part II
- Storage compartment under cockpit
- Axle ratio $i = 3.923$
- Driver's side airbag
- Electrically adjustable and heated exterior mirrors, left and right
- third brake light
- COC documents
- Tachometer
- Driving light assistant
- Electric window regulator for driver and passenger door
- Noise measures
- Seatbelt warning device for driver's seat
- Main tank 71 liters
- Instrument panel and combination instrument with various storage options
- Headrests (2), front
- Steering wheel adjustable for tilt and height
- Marker lights, side
- Without weight increase/decrease: 3,500 kg
- Upholstery: Cloth
- Radio: Pre-installation for digital radio DAB
- Tires: Tires without specified make
- Tires: Premium protection tires (3 years)
- Double-leaf rear door, opening to side wall
- Sliding door on the right, cargo/passenger compartment
- Power steering
- Seats: Driver's seat armrest
- Start-stop function
- continuous partition wall
- Lashing eyes
- Warning triangle
- Heat-insulating glass
- Approval N1



Extra equipment

- Passenger side airbag
- Plastic flooring
- Ceiling light in the cargo/passenger compartment (with door contact)
- Load securing: Tension straps for lashing rails
- Load securing: Lashing rails on side wall to roof frame
- LED light strip in the cargo area
- Cable duct on side wall
- MBUX multimedia system with 7-inch touchscreen (High-resolution 7-inch touchscreen (960 x 540 pixels), AM/FM radio with dual tuner, Bluetooth connectivity with audio streaming and hands-free function, smartphone integration via Android Auto or Apple CarPlay, multimedia connection unit for connecting portable devices via a USB-C interface, 4 x 25 W output power, sound adjustment, separate volume control for audio and telephone, 2-way front speakers)
- Entrance rear door
- Front cupholder
- Seatbelt warning device for front passenger seat
- Interior lining of cargo area up to roof height, washable
- Load securing: Lashing rails on the side wall to the side railing.
- Cable duct at rear portal
- Steering wheel: Multifunction steering wheel
- Package: SMOKER
- Radio: Digital Radio DAB
- Rahloff installation
- Tires: M+S tires
- Spare wheel
- Spare wheel carrier with jack (under frame end)
- Rear view camera
- Key: Multi-button radio remote control

Brief expert findings

Documents submitted	At the time of the inspection, the vehicle registration certificate Part 2 (title) was available, but the vehicle registration certificate Part 1 (document) was not. (Copy)
VIN comparison	The vehicle identification number (VIN) was read from the vehicle and its conformity with the submitted documents was confirmed by the undersigned during the inspection.
Inspection	The inspection conditions were sufficient for the assessment of the vehicle. Lifting equipment and/or a pit were available for examining the vehicle.
Test drive	No test drive/shunting maneuver was carried out during the inspection of the vehicle.
Engine function test	An engine test run was performed.

Value reducing factors

No.	Component group	Description
1	Cab	Insulation lining (Im Motorraum) - Broken / torn - Replace
2	Door - front left side	Door (Innen) - dent(s) - Repair and paint
3	Trim / covers	Cargo area - lining - right side (Rechts und links und Hecktür links) - Broken / torn - Replace

Missing parts

Description

Interior - Ashtray - front

Repainting

No. Repainting

1 Boot lid / rear door, Side panel - rear left side, Door - rear right side, Door - front right side, Professionally carried out

Paint coat thickness measurement

Boot lid / rear door	887 µm	Side panel - rear left side	1,860 µm
Door - rear right side	1,180 µm	Door - front right side	537 µm



Order/Scope of Order

An order was placed to prepare a sales report for the described vehicle. This report includes the following:

- Description of key vehicle information
- Documentation of equipment features
(Delivery by third-party service providers)
- Documentation of damage, defects, missing parts
- Documentation of prior damage, unrepaired prior damage, repainting
- A brief visual or functional inspection of the equipment details, if possible.
(Functional testing of driver assistance systems is not included in the scope of services!)
- a photographic documentation of the vehicle

Basis for the order

This product is based on the guidelines for vehicle returns and valuations of light commercial vehicles published by Alphabet Fleet Management GmbH. The expert makes the specific findings in each individual case objectively, within the framework of the prescribed standards, based on their own expertise.

The vehicle inspection takes place in a fully assembled, unassembled state.

Damage or defects that can only be detected during disassembly/diagnostic work or through further investigation remain within the realm of prognostic risk. An increased risk exists due to concealed defects caused by fraudulent misrepresentation and which were not identifiable by the expert.

Damage or defects resulting from normal use or wear and tear of the vehicle will be accepted in accordance with the applicable standard.

There was no explicit identification or monetary consideration of the expected features within the product.

Features which, in their nature and extent, slightly exceed normal use but do not constitute unacceptable damage, will be documented and indicated as signs of wear, if applicable.

Damage or defects that, according to the applicable standard, can no longer be attributed to normal use or wear and tear are listed under "Value Reducing Factors" in the product description.

Depending on the product specification, a monetary ID can be provided. If this takes place, the costs can be 100% or pro rata depending on the vehicle's age and mileage.

Previous damages

No apparent prior damage that had been repaired could be found on the vehicle.



Figure 1: Diagonal front (left)



Figure 2: Diagonal front (right)



Figure 3: Diagonal rear (left)



Figure 4: Diagonal rear (right)



Figure 5: Interior - front



Figure 6: Interior - rear



Figure 7: Instrument cluster



Figure 8: Instrument panel



Figure 9: Interior 360° view



Figure 10: Cargo area



Figure 11: VIN



Figure 12: Mounted tyres



Figure 13: Documents



Figure 14: Documents



Figure 15: Documents



Figure 16: Documents



Figure 17: Documents

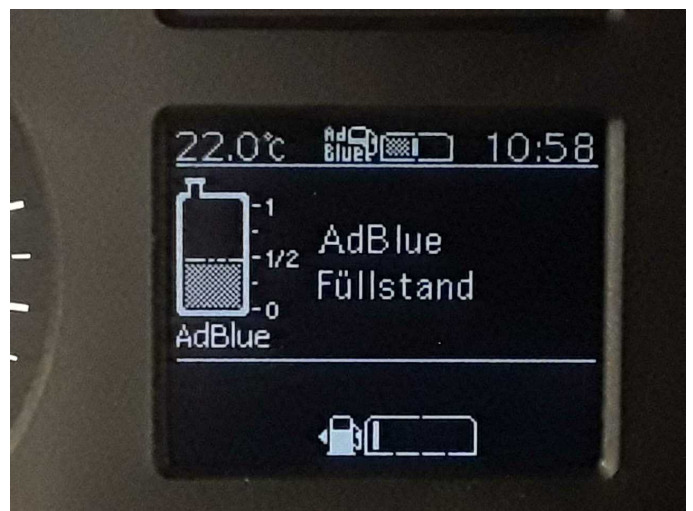


Figure 18: Documents



Figure 19: Misc.



Figure 20: Misc.



Figure 21: Misc.



Figure 22: Misc.



Figure 23: Misc.



Figure 24: Misc.



Figure 25: Misc.



Figure 26: Misc.

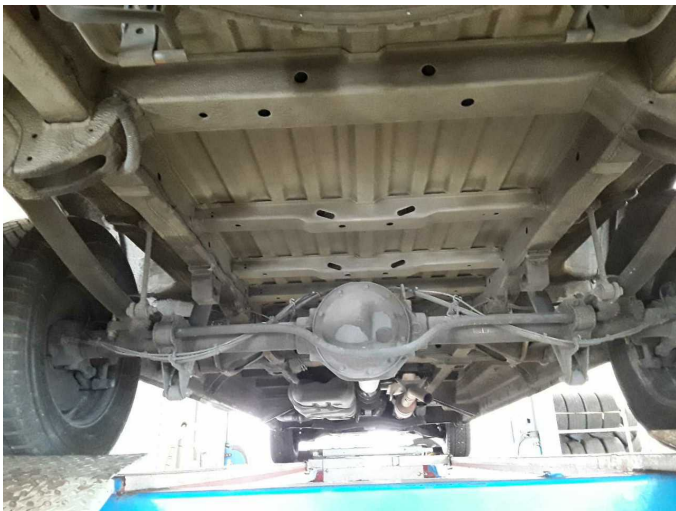


Figure 27: Misc.



Figure 28: Misc.



Figure 29: Misc.



Figure 30: Misc.



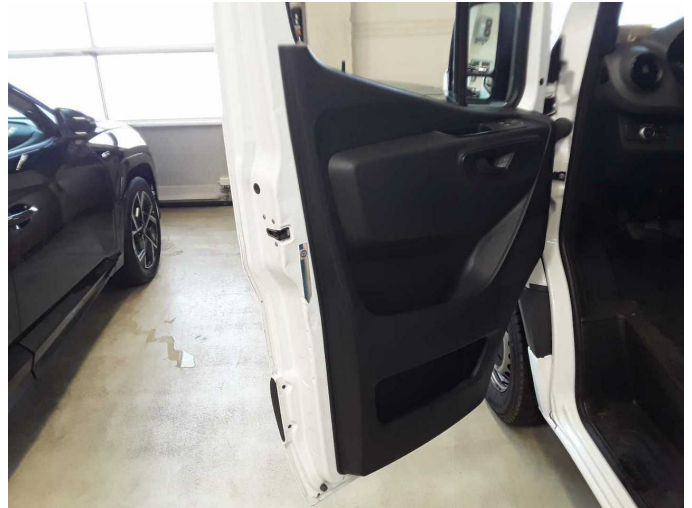
Damage 1: Cab: Insulation lining (Im Motorraum) - Broken / torn - Replace



Damage 1: Cab: Insulation lining (Im Motorraum) - Broken / torn - Replace



Damage 2: Door - front left side: Door (Innen) - dent(s) - Repair and paint



Damage 2: Door - front left side: Door (Innen) - dent(s) - Repair and paint



Damage 2: Door - front left side: Door (Innen) - dent(s) - Repair and paint



Damage 2: Door - front left side: Door (Innen) - dent(s) - Repair and paint



Damage 3: Trim / covers: Cargo area - lining - right side (Rechts und links und Hecktür links) - Broken / torn - Replace



Damage 3: Trim / covers: Cargo area - lining - right side (Rechts und links und Hecktür links) - Broken / torn - Replace



Damage 3: Trim / covers: Cargo area - lining - right side (Rechts und links und Hecktür links) - Broken / torn - Replace



Damage 3: Trim / covers: Cargo area - lining - right side (Rechts und links und Hecktür links) - Broken / torn - Replace



Missing part 1: Interior: Ashtray - front - Missing - Replace



Boot lid / rear door: 887 µm



Boot lid / rear door: 887 μm



Boot lid / rear door: 887 μm



Boot lid / rear door: 887 μm



Side panel - rear left side: 1,860 μm



Side panel - rear left side: 1,860 μm



Side panel - rear left side: 1,860 μm



Side panel - rear left side: 1,860 µm



Side panel - rear left side: 1,860 µm



Door - rear right side: 1,180 µm



Door - rear right side: 1,180 µm



Door - rear right side: 1,180 µm



Door - front right side: 537 µm



Door - front right side: 537 μm



Door - front right side: 537 μm



Wartungshistorie

(gemäß Auftraggeber Informationen)

Fahrgestellnummer: W1V9076371P401830

Hersteller / Modell: MERCEDES-BENZ MERCEDES-BENZ 315 CDI Sprinter Extralang
HA

Datum	KM-Stand	Beschreibung
07.07.2025	111.669	Bremsscheiben+Beläge v+h
22.01.2024	55.984	Systemtest/Eigendiagnose
11.01.2024	55.984	Regelwartungsdienst
23.10.2023	49.721	HU + AU
17.10.2023	49.730	Bremsscheiben+Beläge v+h