

Expertise

Protocol number: 45938108
Order No. / Reference: 26474654
Inspection date: 11 Jun 2026

Manufacturer: Ford

Model: Mondeo Turnier 2.0 EcoBlue Aut. Trend

VIN: WF0FXXWPCFMJ46235



Vehicle details

Manufacturer / Type / Model / Equipment

Ford Mondeo Turnier 2.0 EcoBlue Aut. Trend

Vehicle Identification number WF0FXXWPCFMJ46235

Mileage (Read) 95,652 km

First registration 25 Feb 2021

Number of holders 1

Power / Engine displacement 110 kw / 1,995 ccm

Fuel type / Cylinder Diesel / 4

Gearbox / Number of gears Automatic / 8

Type of drive Front drive

Type of vehicle Station wagon

Colour / colour code Frost Weiß

Doors / Seats 5 / 5

Upholstery type Cloth

Colour of upholstery Black-Anthracite

TÜV SÜD Auto Partner GmbH
Wiesenring 2
04159 Leipzig

Inspection location
Hartmann Fleet Professionals GmbH
Leerenstraße 25
29683 Bad Fallingbommel



Equipment



Standard equipment

- Activated carbon filter
- Anti-lock braking system (ABS) with electronic brake force distribution (EBD)
- Attachment points for safety partition grilles (attachment points 2nd row of seats)
- Tires: 6.5 J x 16 alloy wheels (4) with 215/60 R 16 tires (in 10-spoke design)
- Hill start assist
- headliner, light
- Diesel particulate filter (DPF)
- Electronic Shifter
- Driver information system - 10.7 cm color display (on-board computer with fuel consumption and mileage information)
- Electric front and rear windows (with anti-pinch protection and automatic opening and closing function)
- High Beam Assist
- Ford Easy Fuel (The Ford Easy Fuel convenience refueling system eliminates the need for a separate internal fuel filler cap and prevents misfueling by detecting the size difference between petrol and diesel nozzles. The filler neck only opens when the correct fuel is used.)
- luggage compartment cover
- Luggage compartment lighting
- Cruise control system with intelligent speed limiter
- Transmission: 8-speed automatic transmission (with manual shift option)
- Interior lighting with delay function (with reading lights, front and rear)
- Isofix mounting (including top tether anchor points on the outer seats of the 2nd row)
- Electric child safety lock
- Air conditioning with automatic temperature control (separately adjustable for driver and passenger side (2-zone automatic climate control))
- Front headrests, 4-way height and tilt adjustable
- Steering column, adjustable (adjustable in height and reach)
- MyKey key system (individually programmable second key) (setting options include: limiting the maximum speed and radio volume, speed warning, safety assistance systems cannot be deactivated, locking of ESP deactivation, extended warning system for unfastened seat belts)
- Pre-Collision Assist (with pedestrian and bicycle detection)
- LED taillights (LED brake lights)
- Rear seat backrest, foldable, 60:40 split
- Windscreen wipers with rain sensor
- Headlight dipped beam with switch-off delay including "greeting function" (halogen headlights)
- Headlight assistant with day/night sensor
- Seats: Driver and front passenger seats, 4-way manually adjustable (with manually adjustable lumbar support)
- Start-stop system
- 12-volt socket in the front interior
- Ambient lighting in the front, including door storage compartment, front door handle and footwell lighting.
- Exterior mirrors in body color, driver and passenger side, electrically adjustable and heated (with integrated turn signals)
- Tires: Tire repair kit
- Tires: Tire pressure monitoring system (TPMS)
- third brake light
- Roof rails, black
- Tachometer
- Electronic Safety and Stability Program (ESP) (with traction control (ASR) and safety brake assist (EBA) - and trailer stabilization function)
- Lane Keeping Assist including Lane Keeping Assist and Driver Alert (including High Beam Assist and Road Edge Detection)
- Electronic parking brake
- Ford Power Start function (keyless start)
- FordPass Connect including eCall and Wi-Fi hotspot (information about the current status or location of the vehicle as well as control of selected vehicle functions via smartphone with the FordPass app - eCall emergency call system to send an emergency call in the event of an accident or when manually activated - Wi-Fi hotspot (up to 4G/LTE7, for up to 10 mobile devices))
- Back window, heater
- rear window wiper
- Interior mirror automatically dimming
- Intelligent Protection System (IPS): - Front airbag for driver and front passenger - Knee airbag for driver - Head and shoulder airbags, front and rear - Side airbags for driver and front passenger - Seat belt tensioners and force limiters, front - 3-point seat belts on all seats, height-adjustable at the front)
- Rear headrests (3), height adjustable
- Steering wheel: Multifunction leather steering wheel
- Reading lights front and rear
- Front center console with padded armrests (storage compartment under the armrest - 2 cup holders)
- Fog light
- Emergency brake light (pulsating illumination of the brake lights during hard braking)
- Upholstery: Cloth
- Radio equipment: Ford SYNC 3 audio system with AppLink and touchscreen and digital radio reception DAB/DAB+ (8" touchscreen (20.3 cm screen diagonal) - 8 speakers - steering wheel controls - Bluetooth hands-free system and audio streaming - 2 USB ports - voice control for audio and telephone - SMS text-to-speech function)
- Electromechanical speed-dependent power steering
- Seats: Map pocket on the back of the front passenger seat
- Seats: Map pocket on the driver's seat backrest
- 12-volt power outlet in the luggage compartment
- Front bumper painted in body color
- Carpet floor mats front and rear



- Daytime running light
- Traffic sign recognition system
- Warning system for unfastened seat belts in the front and second row of seats
- Cigarette lighter (and ashtray in the center console)

Extra equipment

- 2 kg powder fire extinguisher
- Vehicle lettering Dräger
- Paint finish: Frost White
- Protective film for rear bumper
- Side windows from the 2nd row of seats and rear window, dark tinted.
- Safety partition grille (mounted behind the front seats, 1st row)
- Seats: Front seats can be heated individually and variably.
- Blind Spot Information System (including Cross Traffic Alert and dynamic distance detection, exterior mirrors with additional memory function)

- Lashing eyes in the luggage compartment floor
- Immobiliser
- Central locking (including selective locking (one door/all doors), remote control and luggage compartment remote release)

- Anti-theft alarm system including double locking (with interior monitoring) (also with independent power supply)
- Package: Business 3 (Ford navigation system incl. Ford SYNC 3 with AppLink, 8" touchscreen (20.3 cm) with DAB/DAB+ - 8 speakers - Steering wheel controls - Bluetooth hands-free system and audio streaming - 2 USB ports - Voice control for audio and telephone - SMS text-to-speech function - Front and rear parking sensors - Adaptive LED headlights - LED headlights, adaptively steering, incl. automatic headlight range control - Sequential LED turn signals at the front - LED daytime running lights - Rearview camera)

Brief expert findings

Documents submitted	At the time of the inspection, the vehicle registration certificate Part 2 (title) was available, but the vehicle registration certificate Part 1 (document) was not. (Copy)
VIN comparison	The vehicle identification number (VIN) was read from the vehicle and its conformity with the submitted documents was confirmed by the undersigned during the inspection.
Inspection	The inspection conditions were sufficient for the assessment of the vehicle. No lifting equipment or pit was available for inspecting the vehicle. Therefore, inspection of the vehicle's underside was only possible to a limited extent.
Test drive	No test drive/shunting maneuver was carried out during the inspection of the vehicle.
Engine function test	An engine test run was performed.

Value reducing factors

No.	Component group	Description
1	Equipment	Tirefit filler - Expired - Replace
2	Door - rear left side	Door edge - Scratch(es) - Smart repair
3	Door - rear right side	Door edge - Scratch(es) - Smart repair
4	Door - front left side	Door edge - Scratch(es) - Smart repair
5	Side panel - rear right side	Sill - Dent / paintcoat damage - Smart repair
6	Front bumper	Front bumper - Deformed - Replace
7	Bonnet	Bonnet - Stone chips - Paint

Wear and tear

No.	Component group	Description
1	Vehicle glazing	Windscreen - Stone chips - No deduction
2	Side panel - rear right side	Side panel - dent(s) - No deduction
3	Rear bumper	Rear bumper - Scratch(es) - No deduction

The vehicle shows signs of wear and tear commensurate with its age and use.



Previous damages

No.	Previous damage	Extent of damage (Net)
1	Front, Side right, Provided by user / customer, from 12 Mar 2024	1.662,72 €

Paint coat thickness measurement

Door - front right side 201 µm |

Order/Scope of Order

An order was placed to prepare a sales report for the described vehicle. This report includes the following:

- Description of key vehicle information
- Documentation of equipment features
(*Delivery by third-party service providers*)
- Documentation of damage, defects, missing parts
- Documentation of prior damage, unrepaired prior damage, repainting
- A brief visual or functional inspection of the equipment details, if possible.
(*Functional testing of driver assistance systems is not included in the scope of services!*)
- a photographic documentation of the vehicle

Basis for the order

This product is based on the guidelines for vehicle returns and valuations published by Alphabet Fleet GmbH. The expert makes the specific findings in each individual case objectively, within the framework of the prescribed standards, based on their own expertise.

The vehicle inspection takes place in a fully assembled, unassembled state.

Damage or defects that can only be detected during disassembly/diagnostic work or through further investigation remain within the realm of prognostic risk. An increased risk exists due to concealed defects caused by fraudulent misrepresentation and which were not identifiable by the expert.

Damage or defects resulting from normal use or wear and tear of the vehicle will be accepted in accordance with the applicable standard.

There was no explicit identification or monetary consideration of the expected features within the product.

Features which, in their nature and extent, slightly exceed normal use but do not constitute unacceptable damage, will be documented and indicated as signs of wear, if applicable.

Damage or defects that, according to the applicable standard, can no longer be attributed to normal use or wear and tear are listed under "Value Reducing Factors" in the product description.

Depending on the product specification, a monetary ID can be provided. If this takes place, the costs can be 100% d or pro rata depending on the vehicle's age and mileage.

Previous damages

According to available information previous damages were repaired at the vehicle. Traces of repairs, which allow conclusions about the area of repair, were not recognizable during the inspection.

Comments

- Der beiliegende Winterradsatz ist kein Bestandteil des Auslieferungsumfangs.



Figure 1: Diagonal front (left)



Figure 2: Diagonal front (right)



Figure 3: Diagonal rear (left)



Figure 4: Diagonal rear (right)



Figure 5: Interior - front



Figure 6: Interior - rear



Figure 7: Instrument cluster



Figure 8: Instrument panel



Figure 9: Interior 360° view



Figure 10: Cargo area



Figure 11: VIN



Figure 12: Mounted tyres



Figure 13: Documents



Figure 14: Additional tyres



Figure 15: Additional tyres

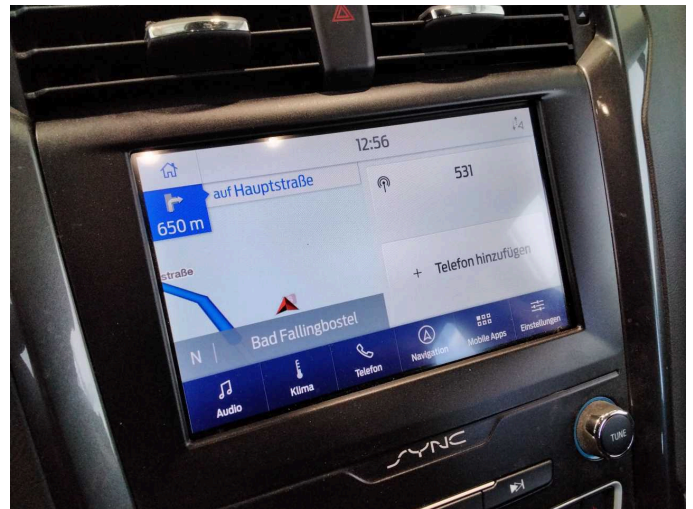


Figure 16: Navigation

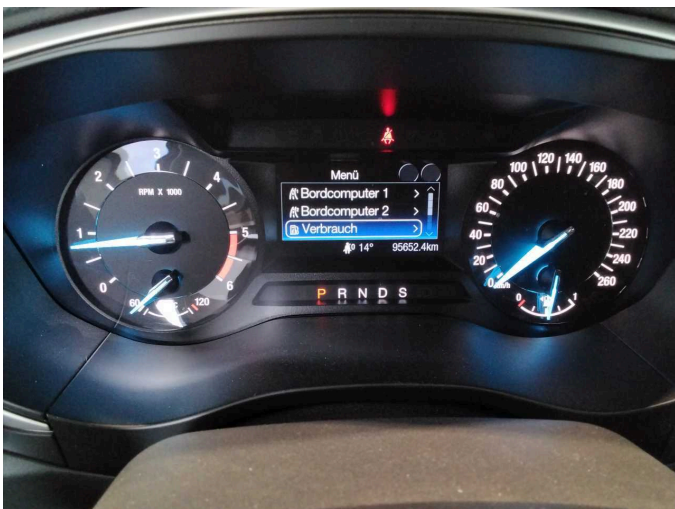


Figure 17: Misc.

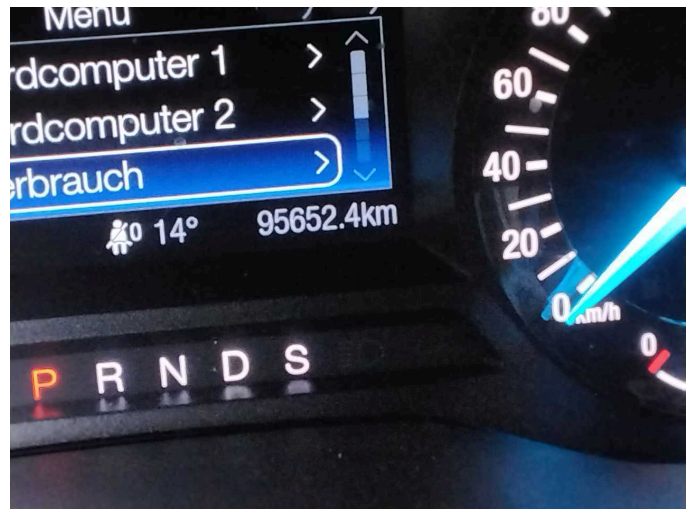


Figure 18: Misc.

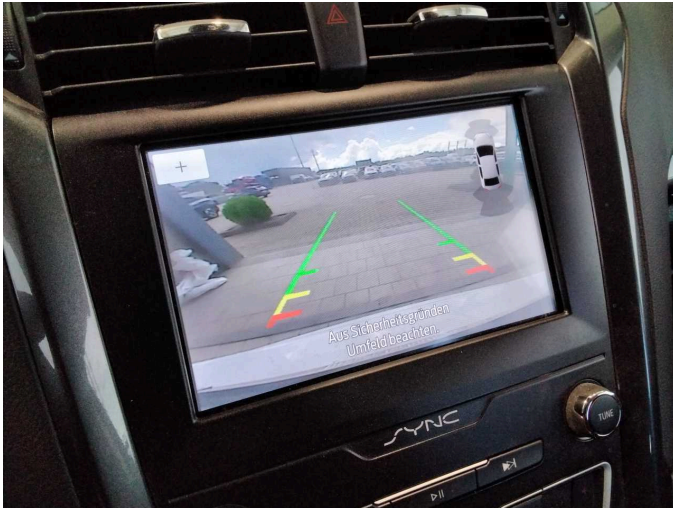


Figure 19: Misc.

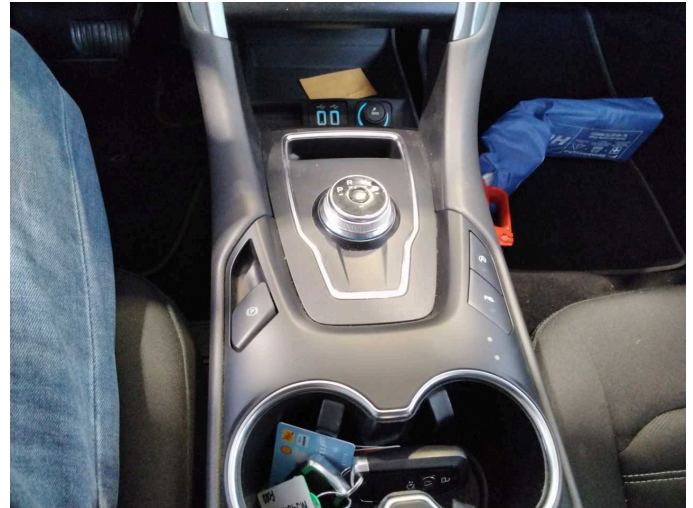


Figure 20: Misc.



Figure 21: Misc.



Figure 22: Misc.

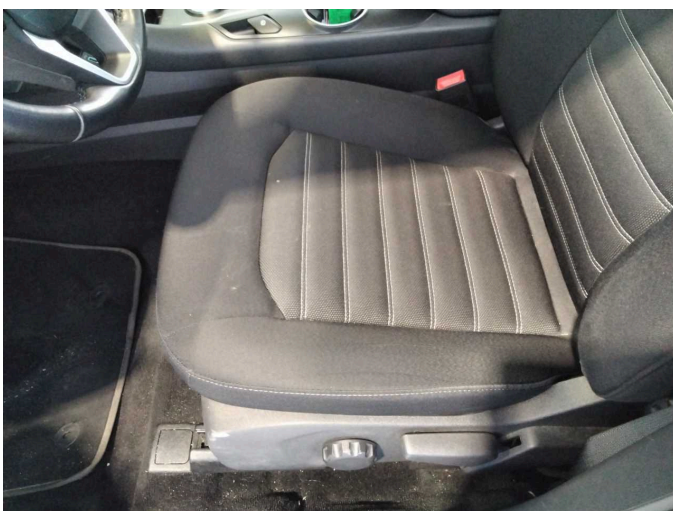


Figure 23: Misc.



Figure 24: Misc.



Figure 25: Misc.



Figure 26: Misc.



Figure 27: Misc.



Figure 28: Misc.



Damage 1: Equipment: Tirefit filler - Expired - Replace



Damage 2: Door - rear left side: Door edge - Scratch(es) - Smart repair



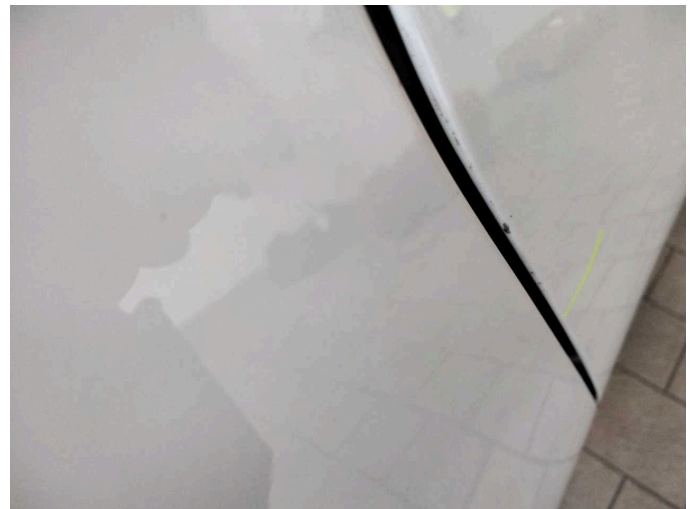
Damage 2: Door - rear left side: Door edge - Scratch(es) - Smart repair



Damage 3: Door - rear right side: Door edge - Scratch(es) - Smart repair



Damage 3: Door - rear right side: Door edge - Scratch(es) - Smart repair



Damage 3: Door - rear right side: Door edge - Scratch(es) - Smart repair



Damage 4: Door - front left side: Door edge - Scratch(es) - Smart repair



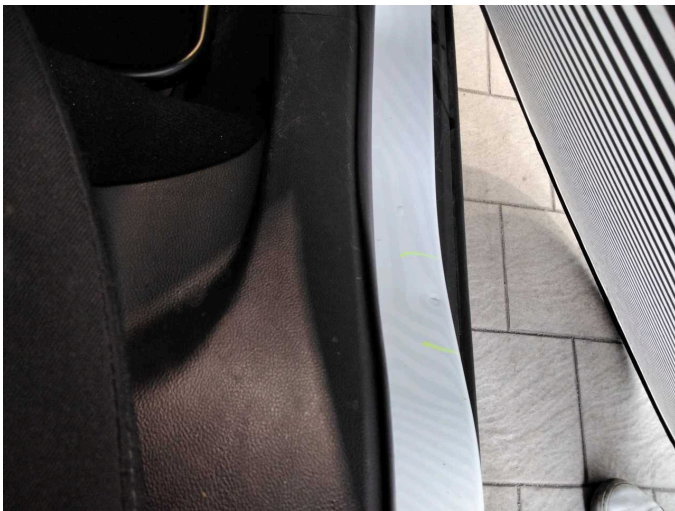
Damage 4: Door - front left side: Door edge - Scratch(es) - Smart repair



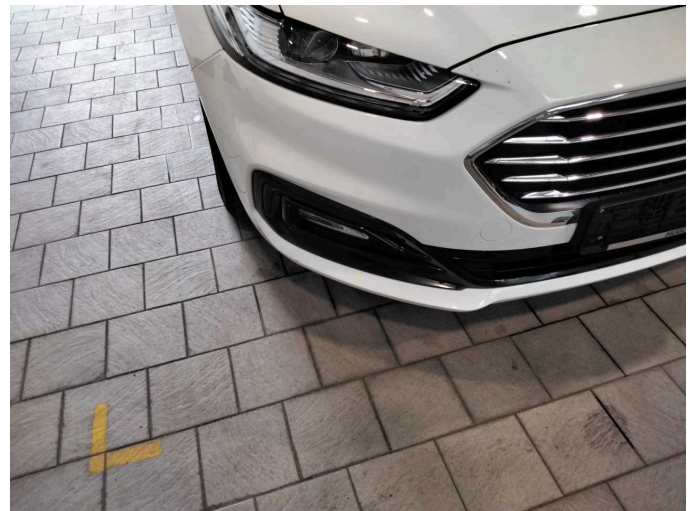
Damage 5: Side panel - rear right side: Sill - Dent / paintcoat damage - Smart repair



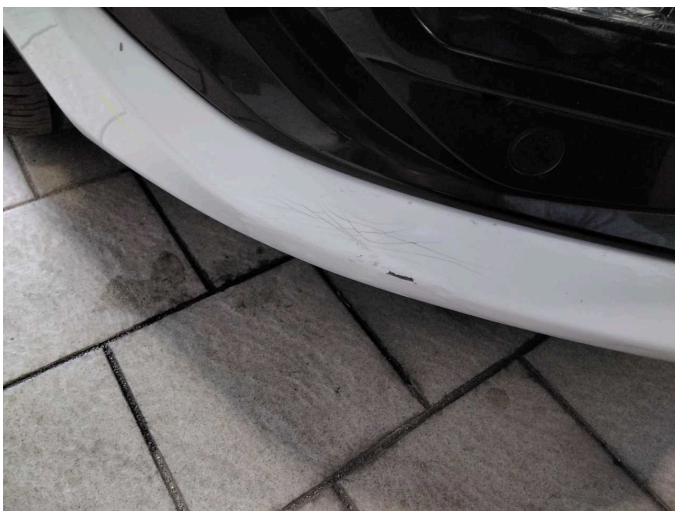
Damage 5: Side panel - rear right side: Sill - Dent / paintcoat damage - Smart repair



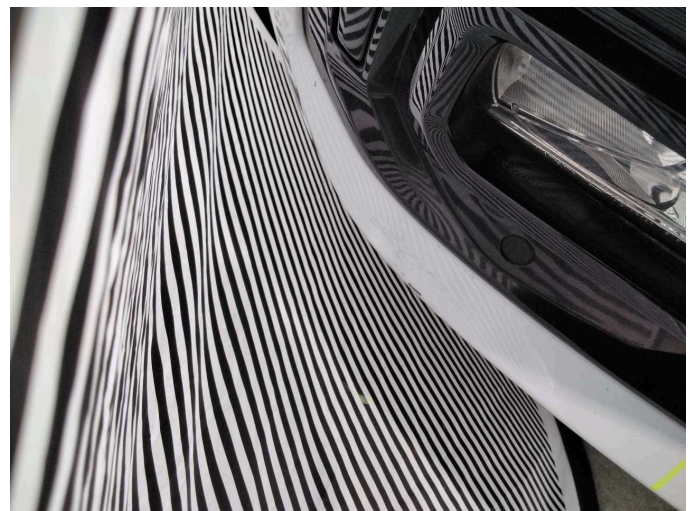
Damage 5: Side panel - rear right side: Sill - Dent / paintcoat damage - Smart repair



Damage 6: Front bumper: Front bumper - Deformed - Replace



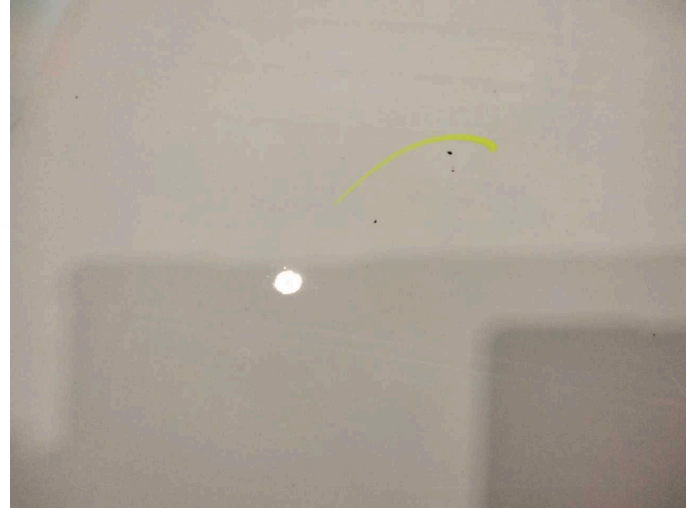
Damage 6: Front bumper: Front bumper - Deformed - Replace



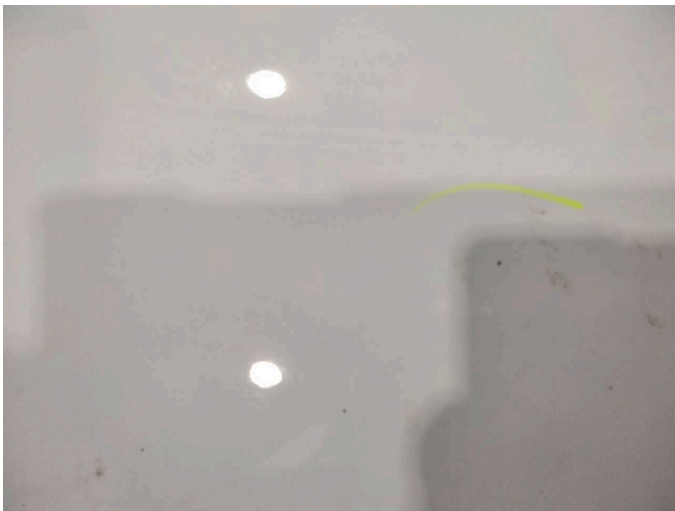
Damage 6: Front bumper: Front bumper - Deformed - Replace



Damage 7: Bonnet: Bonnet - Stone chips - Paint



Damage 7: Bonnet: Bonnet - Stone chips - Paint



Damage 7: Bonnet: Bonnet - Stone chips - Paint



Damage 7: Bonnet: Bonnet - Stone chips - Paint



Damage 7: Bonnet: Bonnet - Stone chips - Paint



Wear and tear 1: Vehicle glazing: Windscreen - Stone chips - No deduction



Wear and tear 2: Side panel - rear right side: Side panel - dent(s) - No deduction



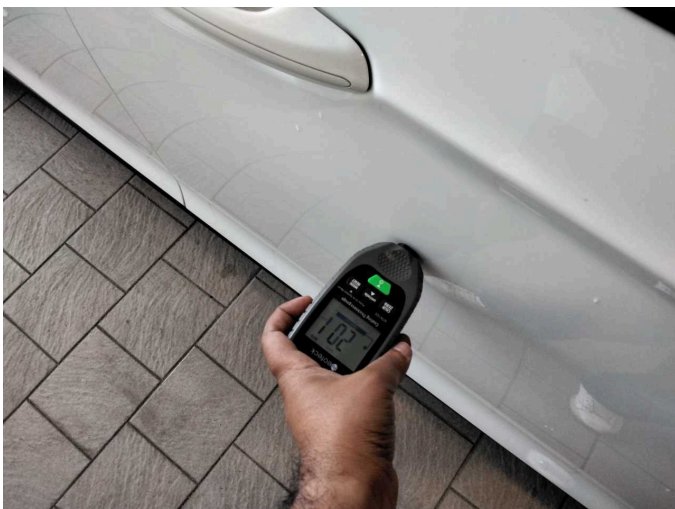
Wear and tear 2: Side panel - rear right side: Side panel - dent(s) - No deduction



Wear and tear 3: Rear bumper: Rear bumper - Scratch(es) - No deduction



Wear and tear 3: Rear bumper: Rear bumper - Scratch(es) - No deduction



Door - front right side: 201 μm



Door - front right side: 201 μm



Wartungshistorie

(gemäß Auftraggeber Informationen)

Fahrgestellnummer: WF0FXXWPCFMJ46235

Hersteller / Modell: FORD FORD Mondeo Turnier 2.0 EcoBlue Aut. Trend

Datum	KM-Stand	Beschreibung
14.04.2026	95.593	Batterie ern; Systemtest/Eigendiagnose
19.05.2025	91.025	Motoröl b. Wartung; Ölwechsel
09.12.2024	80.534	Reparatur Sonstiges; Systemtest/Eigendiagnose
04.09.2024	76.125	Bremse Sonstiges; Bremsklötze hinten; Bremsklötze vorne; Bremsscheiben + Klötze v; Bremsscheiben vorne; Motoröl b. Wartung; Ölfilter ern; Regelwartungsdienst; Wartung Sonstiges
28.03.2024	67.923	Systemtest/Eigendiagnose
21.09.2023	52.278	Bremsflüssigkeit; Bremsflüssigkeit ern; Kraftstofffilter ern; Luftfiltereinsatz ern; Motoröl b. Wartung; Ölfilter ern; Regelwartungsdienst; Systemtest/Eigendiagnose; Wartung Sonstiges
19.04.2022	24.791	Motoröl b. Wartung; Ölfilter ern; Regelwartungsdienst; Wartung Sonstiges