

Expertise

Protocol number: 46266231
Order No. / Reference: 26569887
Inspection date: 29 Jun 2026

Manufacturer: Mercedes-Benz

Model: C 300 e T 9G-TRONIC AMG Line Advanced

VIN: W1KAH5EB4RF144719



Vehicle details

Manufacturer / Type / Model / Equipment

Mercedes-Benz C 300 e T 9G-TRONIC AMG Line Advanced

Vehicle Identification number W1KAH5EB4RF144719

Mileage (Read) 42,959 km

First registration 11 Dec 2023

Number of holders 1

Next periodical technical inspection 12/2026
(Report not on hand)

Power / Engine displacement 150 kw / 1,999 ccm

Fuel type / Cylinder Hybr.B/E ext.aufll / 4

Gearbox / Number of gears Automatic / 9

Type of drive Rear drive

Type of vehicle Station wagon

Colour / colour code SCHWARZ - UNILACK

Doors / Seats 5 / 5

Upholstery type Alcantara / Leather

Colour of upholstery Anthracite-Black



Vehicle details			
Maintenance booklet / proof	digital proof / complete	Next maintenance in	23 Tag(e)
Last service on / at	02/2025 at 25,178 km		
Key is / should be	2 / 2	FZG documents	ZB#2 (B) was available (copy), ZB#1 (S) was not available.
		Letter No.	GY548738
Previous damage / Accident	None detectable	Repainting	None detectable
Inspection conditions	sufficient	Lifting equipment / pit	No
Test drive	Not performed	Engine function test	Performed
Manufacturer key number/ type code number	2222 / BEP 00087		
Emission standard	EURO6;WLTP;AP;PI/CI; M, N1 I	fine dust sticker	
Permitted total weight	2,655 kg	Empty weight	

Tyres

Mounted tyres				
#	Tyre size	Type of tyre	Manufacturer	Tread depth
1)	225/50 R17 98H	Winter tyres on Light alloy	Michelin	6mm / 6mm
2)	245/45 R17 99H	Winter tyres on Light alloy	Michelin	5mm / 5mm
Additional tyres				
#	Tyre size	Type of tyre	Manufacturer	Tread depth
1)	225/45 R18 95Y	Summer tyres on Light alloy	Michelin	6mm / 6mm
2)	255/40 R18 99Y	Summer tyres on Light alloy	Michelin	6mm / 6mm
Replacement				
Typ	Tyre size	Type of tyre	Manufacturer	Tread depth
	Tirefit	Expiration date 01/2029		

Legend: Tread depth information for the left tire is listed first, for the right tire it is listed second on the axle in the direction of travel.

TÜV SÜD Auto Partner GmbH
Wiesenring 2
04159 Leipzig

Inspection location
Hartmann Fleet Professionals GmbH
Leerenstraße 25
29683 Bad Fallingbommel



Equipment



Standard equipment

- Adaptive Highbeam Assist (automatic switching of the high beams on and off - camera on the inside of the windshield - detects oncoming and preceding illuminated vehicles - activated by pressing the steering wheel control lever to the high beam position)
- Airbag: Center airbag (Additional airbag for increased front occupant protection in the event of a side impact)
- Airbag: Sidebag for driver and front passenger (combined thorax/pelvisbag)
- Ambient lighting with 64 light colors (Three dimming zones (Total, Ambient and Accent) - Variable brightness setting - 64 colors - Ten color moods - Integrated into the ENERGIZING comfort control programs)
- Left and right exterior mirrors are heated and electrically adjustable
- Brake assist, active
- Roof rails in matte black
- DYNAMIC SELECT (consisting of driving programs: Comfort, Sport, Eco mode)
- Electronic Stability Program (ESP) (including Anti-lock Braking System (ABS) and Traction Control System (ASR))
- Chassis: Comfort chassis
- Electric windows (4-way)
- Speed Limit Assistant (The Speed Limit Assistant detects and displays speed limits.)
- Transmission: 9-speed automatic, 9G-TRONIC
- rear window wiper
- Heated rear window
- Instrument panel and door sills in ARTICO man-made leather with a nappa leather look
- Mechanical child safety lock for the rear doors
- Rear headrests (3)
- Front headrests
- Charging cable for household socket, 5m, smooth (This charging cable, also called Mode 2 cable, allows you to charge the vehicle battery at the household socket with up to 1.8 kW (230 V, 1-phase, 8A) and fits sockets of type E/F CEE 7/7)
- Charging cable for wallbox and public charging station, 5m, smooth 11kW (This charging cable, also called Mode 3 cable, allows you to charge the vehicle battery at the wallbox or at public charging stations with up to 11 kW (Type 2, 3-phase, 16 A).)
- LED High Performance headlights (low beam with LED projection technology, high beam with LED reflection technology, daytime running lights, position lights and direction indicators in LED technology, adaptive full-LED taillights with automatic adjustment of light intensity to the surroundings)
- Mercedes-Benz Emergency Call System (can provide a crucial time advantage in an emergency. A communication module with its own SIM card automatically triggers an emergency call upon detection of an accident, which can shorten the time until emergency services arrive. The emergency call can also be triggered manually to organize assistance.)
- Airbag for driver and front passenger
- Airbag: Automatic passenger airbag deactivation (The system automatically deactivates the passenger airbag as soon as it detects a rear-facing child seat or registers that the passenger seat is unoccupied. A transponder in the child seat is not necessary. If it detects that an adult is taking the seat, the airbag is automatically activated, reducing the risk of incorrect operation.)
- Airbag: Windowbag for driver and front passenger
- AMG floor mats
- ATTENTION ASSIST (the attention assistant) (can detect typical signs of fatigue through driver behavior and warn the driver of increasing fatigue or inattentiveness)
- Basic services (breakdown management, maintenance management, accident management, telediagnosis, remote vehicle diagnostics)
- Double cup holder at the front
- EASY-PACK tailgate (with electric operation for opening and closing)
- Driver display (31.2 cm (12.3") color LCD display with a resolution of 2400 x 900 pixels - five different menus with specific content and display styles)
- Fingerprint scanner (Color-illuminated fingerprint scanner in the control bar below the central display - Two fingerprints can be stored per user - Fast access replaces PIN entry - Protects personal data such as profiles as well as office and payment functions)
- Interior headliner fabric crystal grey
- ISOFIX child seat attachment with top tether in the rear
- KEYLESS-GO start function
- THERMATIC automatic climate control with 2 climate zones (control via the central display or the climate control unit in the center console; sensor system for detecting, for example, indoor/outdoor temperature, sunlight, humidity, and dew point; automatic recirculation (only in conjunction with navigation system); ventilation system consisting of: 3 center vents and 2 side vents; fine dust activated carbon filter for filtering dust, soot, and pollen; dew point sensor; residual heat function for efficient use of engine waste heat)
- Cargo area cover including EASY-PACK safety net
- Charging system: AC charging system 11kW (More flexibility: With the powerful AC charging system, you can charge your plug-in hybrid quickly and easily with up to 11 kW (3-phase) or 7.4 kW (1-phase). In addition to a wallbox at home, you can also connect your vehicle to a variety of public charging stations. These usually supply alternating current – just like conventional sockets.)



- Center console in high-gloss black
- Navigation: MBUX Navigation Premium (Pre-installation for navigation services - Package (control code) - Multimedia / Digital content - Hard disk navigation - Pre-installation for Live Traffic Information - Communication module (LTE) for the use of Mercedes me connect services)
- Package: AMG Line Advanced (for 300e, 400e, 300de) (38U Remote and Charging Services Plus - 70B Warning vest for driver - 9B2 Charging cable for wallbox and public charging station, 5m, smooth - P29 AMG Line Interior - P31 AMG Line Exterior - PBG MBUX Navigation Premium)
- Package: Luggage compartment comfort (electrically folding rear seat backrests via switches on the right and left in the control panel in the load compartment - electric opening and closing of the load compartment roller blind - 12V socket on the left in the control panel in the load compartment - reversible mat, with a rubberized, non-slip side and a soft velour side)
- Package: Parking package with reversing camera (12 ultrasonic sensors - reversing camera: integrated into the boot lid, display in the central display, trailer mode - Active Parking Assist with PARKTRONIC - detects free parking spaces - assisted parking - visual and acoustic warning of detected obstacles - display of camera and ultrasonic data in the central display - button for Active Parking Assist - cross traffic warning - reverse maneuvering braking - drive-away assist)
- Package: Mirror package (both exterior mirrors electrically folding (button in the driver's door control panel) - interior mirror and exterior mirror on the driver's side automatically dimming continuously - ambient lighting of the exterior mirror to illuminate the entry area with projection of the Mercedes-Benz logo)
- Radio: MBUX multimedia system (instrument display with 17.78 cm (7") diagonal - media display with 17.78 cm (7") diagonal and touch function - touch control buttons on the steering wheel - radio (FM/AM) - USB interface in the center console under the armrest - Bluetooth telephony with contact transfer and audio streaming of music files - display of vehicle functions (driver assistance systems, driving programs and vehicle settings) - favorites storage - smartphone-related voice control)
- Radio accessories: Central display (touchscreen display with LCD technology - 30.2 cm (11.9") screen diagonal - resolution of 1,624 x 1,728 pixels (width x height) - tilted 6° - 7° towards the driver)
- Remote Services (Communication module - Mercedes me services: -Programming of auxiliary heating/ventilation: -Remote door locking and unlocking -Sunroof/windows with remote locking and opening including ventilation function -Personalization -Vehicle location -Vehicle tracking -Geographic vehicle monitoring -Parking service monitoring -Find function (Remote Vehicle Finder))
- Wheels: 45.7 cm (18") AMG light-alloy wheels in 5-spoke design (aerodynamically optimized, painted in tremolite grey and polished with front axle 225/45 R 18 on 7.5 J x 18 H ET 40, rear axle 245/40 R 18 on 9 J x 18 H ET 58)
- Seats: Rear seat backrests foldable
- Steering wheel: Multifunction sports steering wheel in Nappa leather (sporty steering wheel in a 3-twin-spoke design, flattened at the bottom - finished in Nappa leather, deeply embossed in the grip area - horizontal double spokes in high-gloss black, vertical double spokes in silver chrome - shift paddles in silver chrome - control via touch panels: left: instrument cluster, cruise control and limiter or Active Distance Assist DISTRONIC; right: multimedia system (e.g., audio volume and track selection, telephony and navigation), touch sensitivity adjustment)
- Otto particulate filter
- Package: Storage (Luggage net on the left side panel in the trunk/ cargo area - Elastic tension strap on the right in the cargo area (only for the T-Model) - Folding box under the load floor (not available for plug-in hybrid vehicles) - Double cup holder in the center console for 2 x 750 ml - Map pockets on the back of the front seats)
- Package: Interior lighting package (Illuminated glove compartment - Lighting for wireless mobile interface or mobile phone storage - Lighting for the storage compartment in the center console or the double cupholder - Lighting for the storage compartment under the armrest of the center console - Two makeup lights in front - Two reading lights in the overhead control unit - Two reading lights and interior light function in the grab handles in the rear - Lighting for the trunk or cargo area)
- Package: Seating comfort (various electric and manual adjustment options for the front seats to adapt to the specific body and comfort requirements of driver and front passenger - electro-pneumatic 4-way lumbar support - electric seat cushion tilt adjustment - electric height adjustment - electric backrest adjustment - electric seat cushion depth adjustment by 6 cm with leg rest pad - mechanical longitudinal adjustment - mechanical headrest adjustment)
- Package: USB (2 USB-C ports under the front center armrest, suitable for data transfer)
- Upholstery: ARTICO leatherette/MICROCUT microfiber
- Radio: Extended MBUX functions (personalization (profiles) and prediction functions - MBUX voice assistant with natural language understanding - activation via "Hey Mercedes" - learning function of the MBUX voice assistant by connecting to a cloud-based online dictionary - Wi-Fi hotspot - internet radio)
- Radio accessories: Digital radio (DAB)
- Radio accessory: Communication module (LTE) for using Mercedes me connect services (The communication module with a vehicle-integrated, LTE-enabled SIM card offers you added comfort and safety. It continuously connects you to your vehicle – and the vehicle to infrastructure such as the Mercedes-Benz server or the internet. This allows you to use services such as Mercedes me connect Live Traffic Information.)
- Tire pressure monitoring system (TPMS)



- Lane Keeping Assist, active
- Telephone accessories: Wireless charging system for mobile devices (wireless charging according to Qi standard for compatible mobile phones - fast connection setup between multimedia system and mobile phone via Near Field Communication (NFC) for identification of the mobile device - storage compartment for wireless charging is located in the storage compartment at the front of the center console)
- Cruise control
- TIREFIT with tire inflation compressor
- Fully digital instrument display (Freestanding, fully digital instrument display with a 26 cm (10.25") color LCD display and a resolution of 1440 x 540 pixels)
- High-visibility vest for drivers
- Electronic immobilizer
- Decorative elements, metal structure

Extra equipment

- Towbar with ESP trailer stabilization
- Black fabric headliner
- Center console metal structure
- Package: Driving Assistance Package Plus (Active Distance Assist DISTRONIC, Active Speed Limit Assist, Extended Automatic Restart on Highways, Route-Based Speed Adaptation with Traffic Jam Function, Active Traffic Jam Assist, Active Steering Assist, Active Lane Change Assist, Active Emergency Stop Assist, Emergency Lane Function, Active Brake Assist with Vehicle, Bicycle and Pedestrian Detection; Intersection Function, Turning Function, Traffic Jam Emergency Braking Function, Evasive Steering Assist, Active Lane Keeping Assist, Active Blind Spot Assist, PRE-SAFE Impulse Side, PRE-SAFE System)
- Upholstery: ARTICO man-made leather
- Wheels: 45.7 cm (18") AMG light-alloy wheels in 5-spoke design (aerodynamically optimized, painted black and high-sheen finish with front axle 225/45 R 18 on 7.5 J x 18 ET 40, rear axle 245/40 R 18 on 8.5 J x 18 ET 52)
- Wheels: Complete winter wheel sets fitted at the factory

- Remote and Charging Services Plus (The Remote and Charging Services Plus package connects you to the vehicle. You can locate it if desired and remotely control selected functions. With Mercedes me Charge, you can charge your vehicle at many public charging stations with maximum cost transparency. You only need to register once and receive a single, centralized bill.)
- Windscreen wipers with rain sensor
- Power steering
- Seats: Heated seats for driver and front passenger (Pleasant warmth and therefore high seating and travel comfort. In cooler weather or according to your personal preference, the seat heating quickly brings the seat surfaces and backrests to a comfortable temperature. The intensity can be selected in three levels. Intelligent and convenient: The seat heating switches off automatically.)
- Telephone accessories: Smartphone integration (wirelessly connects the mobile phone to the MBUX multimedia system - display of selected third-party apps - access to current software and data, e.g., for navigation, traffic information, contact data, messaging, telephony, media, IP radio - optimized user interface for driving - control of smartphone functions via voice control)
- Pre-installation for digital key handover (Share your vehicle key even without personal handover - Decide to whom you open the vehicle and hand over the key - Use the functions conveniently in the Mercedes me app)
- Central locking with remote control

- DIGITAL LIGHT (HD system with projection module (more than 1 million pixels per headlight) - MULTIBEAM LED background module - Topography compensation - Adaptive Highbeam Assist Plus - ULTRA RANGE high beam - Active cornering lights with predictive control - Extended fog lights, turning lights, country road lights, city lights, bad weather lights, as well as motorway lights and motorway high beams with optimized illumination of the road surface for the driving situation - Turning lights with roundabout and intersection warning - Off-road lights for vehicles - Adaptive full LED rear lights)
- Package: Winter Package Plus with 43.2 cm (17") winter complete wheels (Winter Package - Winter complete wheels M+S 4-way 43.2 cm (17") light alloy wheels in 5-spoke design, polished finish, with front axle 225/50 R17 on 7 J x 17 ET44.5, rear axle 245/45 R17 on 8 J x 17 ET49.5)
- Wheels: Winter complete set of wheels M+S 4-way 43.2 cm (17") light alloy wheels 5-spoke design
- Traffic Sign Assistant



Brief expert findings

Documents submitted	At the time of the inspection, the vehicle registration certificate Part 2 (title) was available, but the vehicle registration certificate Part 1 (document) was not. (Copy)
VIN comparison	The vehicle identification number (VIN) was read from the vehicle and its conformity with the submitted documents was confirmed by the undersigned during the inspection.
Inspection	The inspection conditions were sufficient for the assessment of the vehicle. No lifting equipment or pit was available for inspecting the vehicle. Therefore, inspection of the vehicle's underside was only possible to a limited extent.
Test drive	No test drive/shunting maneuver was carried out during the inspection of the vehicle.
Engine function test	An engine test run was performed.

Value reducing factors

No.	Component group	Description
1	Side panel - rear left side	Side panel - dent(s) - Smart repair
2	Door - front left side	Door edge - Scratch(es) - Smart repair
3	Side panel - rear right side	Sill - dent(s) - Smooth repair work
4	2nd wheel set	1 tyre - Damaged - Replace
5	Front axle	Axles / undercarriage (wegen der beschädigten Felgen) - Specify findings - Measure
6	Boot lid / rear door	Boot lid - dent(s) - Smooth repair work
7	2nd wheel set	1 alloy rim - Scratched - Loss in value
8	2nd wheel set	1 alloy rim - Scratch(es) - Loss in value
9	2nd wheel set	1 alloy rim - Damaged - Replace
10	2nd wheel set	1 alloy rim - Scratched - Replace
11	Rear bumper	Rear bumper - Scratch(es) - Paint
12	Front bumper	Front bumper - Scratch(es) - Paint

Wear and tear

No.	Component group	Description
1	Seat - rear	Upholstery (Druckstelle) - No deduction
2	Wheel / tyres	Alloy rim - rear right side - Scratch(es) - No deduction
3	Wheel / tyres	Tyre - rear right side - Porous / cracked - No deduction
4	Roof	Roof - dent(s) - No deduction
5	Vehicle glazing	Windscreen - Stone chips - No deduction

The vehicle shows signs of wear and tear commensurate with its age and use.

Order/Scope of Order

An order was placed to prepare a sales report for the described vehicle. This report includes the following:

- Description of key vehicle information
- Documentation of equipment features
(*Delivery by third-party service providers*)
- Documentation of damage, defects, missing parts
- Documentation of prior damage, unrepaired prior damage, repainting
- A brief visual or functional inspection of the equipment details, if possible.
(*Functional testing of driver assistance systems is not included in the scope of services!*)
- a photographic documentation of the vehicle



Basis for the order

This product is based on the guidelines for vehicle returns and valuations published by Alphabet Fleet GmbH. The expert makes the specific findings in each individual case objectively, within the framework of the prescribed standards, based on their own expertise.

The vehicle inspection takes place in a fully assembled, unassembled state.

Damage or defects that can only be detected during disassembly/diagnostic work or through further investigation remain within the realm of prognostic risk. An increased risk exists due to concealed defects caused by fraudulent misrepresentation and which were not identifiable by the expert.

Damage or defects resulting from normal use or wear and tear of the vehicle will be accepted in accordance with the applicable standard.

There was no explicit identification or monetary consideration of the expected features within the product.

Features which, in their nature and extent, slightly exceed normal use but do not constitute unacceptable damage, will be documented and indicated as signs of wear, if applicable.

Damage or defects that, according to the applicable standard, can no longer be attributed to normal use or wear and tear are listed under "Value Reducing Factors" in the product description.

Depending on the product specification, a monetary ID can be provided. If this takes place, the costs can be 100% d or pro rata depending on the vehicle's age and mileage.

Previous damages

No apparent prior damage that had been repaired could be found on the vehicle.



Figure 1: Diagonal front (left)



Figure 2: Diagonal front (right)



Figure 3: Diagonal rear (left)



Figure 4: Diagonal rear (right)



Figure 5: Interior - front



Figure 6: Interior - rear



Figure 7: Instrument cluster



Figure 8: Instrument panel



Figure 9: Interior 360° view



Figure 10: Cargo area



Figure 11: VIN



Figure 12: Mounted tyres



Figure 13: Documents



Figure 14: Additional tyres

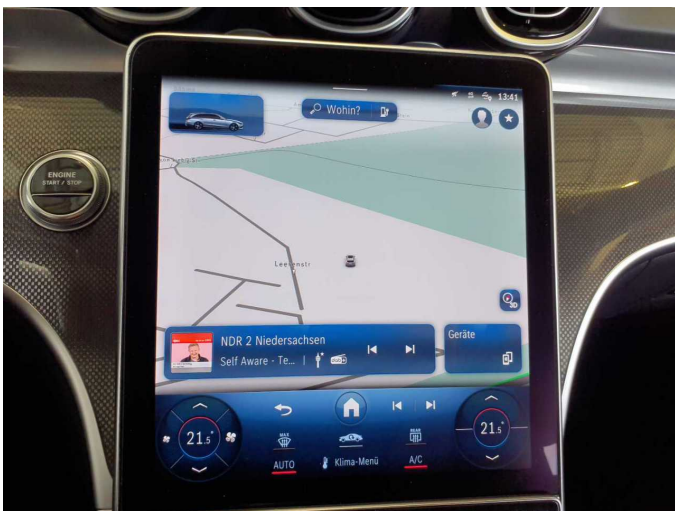


Figure 15: Navigation



Figure 16: Misc.

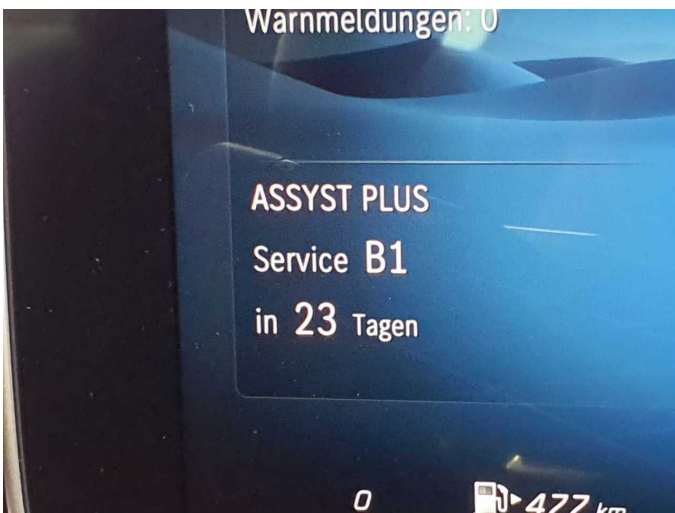


Figure 17: Misc.



Figure 18: Misc.



Figure 19: Misc.



Figure 20: Misc.



Figure 21: Misc.



Figure 22: Misc.



Figure 23: Misc.



Figure 24: Misc.



Figure 25: Misc.



Figure 26: Misc.

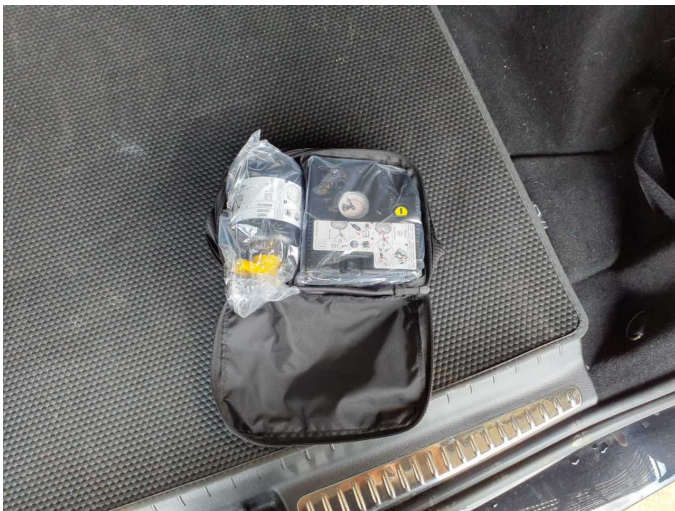


Figure 27: Misc.



Damage 1: Side panel - rear left side: Side panel - dent(s) - Smart repair



Damage 1: Side panel - rear left side: Side panel - dent(s) - Smart repair



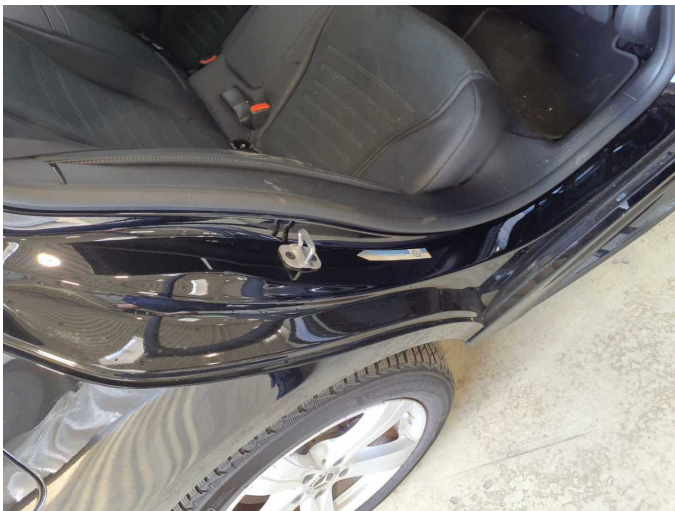
Damage 2: Door - front left side: Door edge - Scratch(es) - Smart repair



Damage 2: Door - front left side: Door edge - Scratch(es) - Smart repair



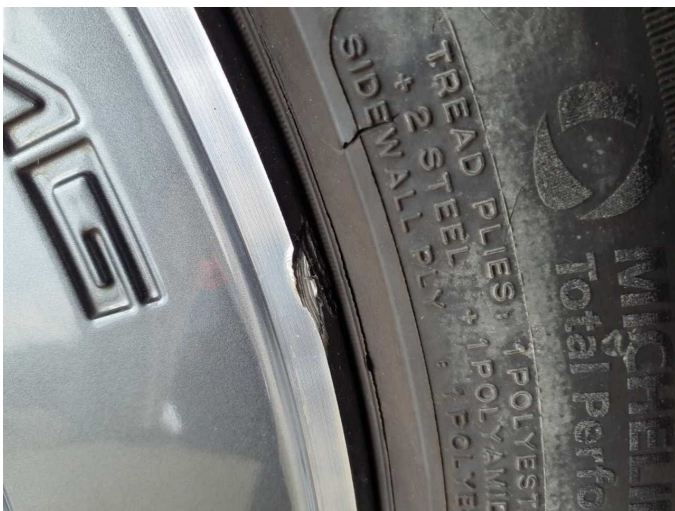
Damage 2: Door - front left side: Door edge - Scratch(es) - Smart repair



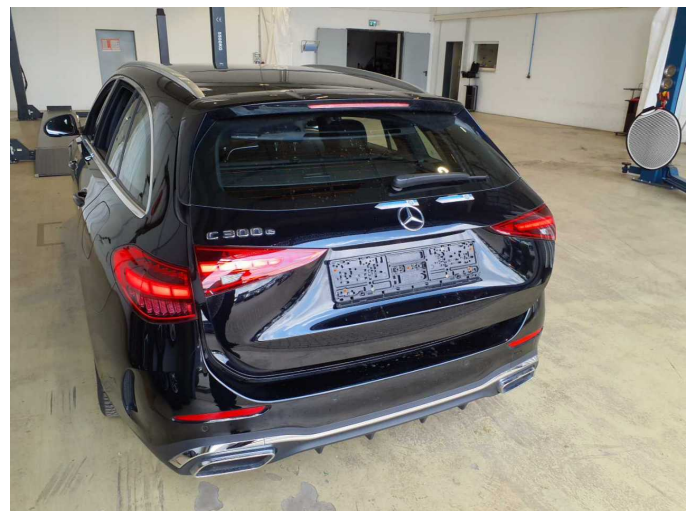
Damage 3: Side panel - rear right side: Sill - dent(s) - Smooth repair work



Damage 3: Side panel - rear right side: Sill - dent(s) - Smooth repair work



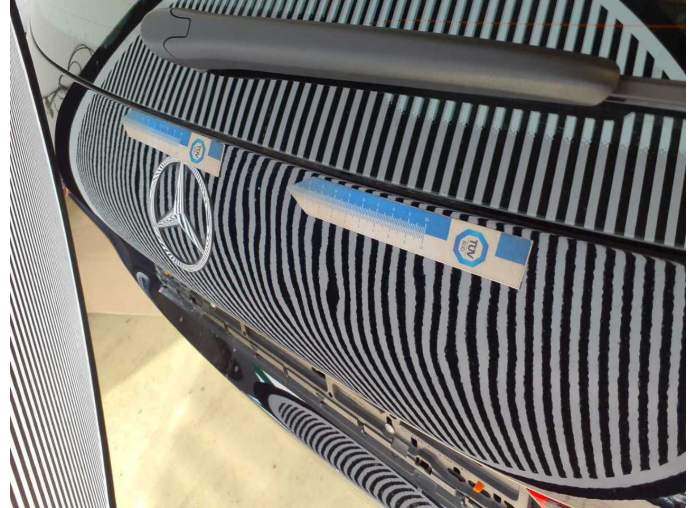
Damage 4: 2nd wheel set: 1 tyre - Damaged - Replace



Damage 6: Boot lid / rear door: Boot lid - dent(s) - Smooth repair work



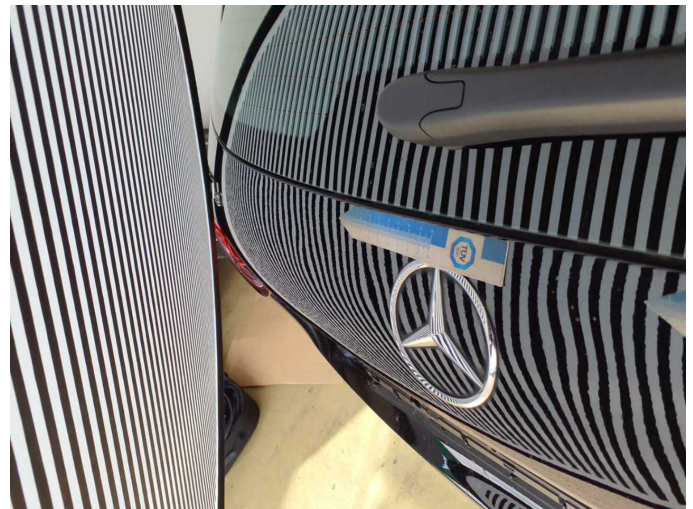
Damage 6: Boot lid / rear door: Boot lid - dent(s) - Smooth repair work



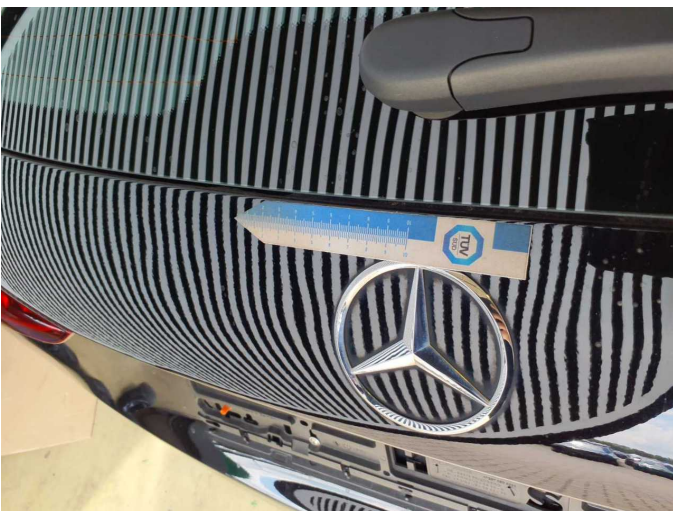
Damage 6: Boot lid / rear door: Boot lid - dent(s) - Smooth repair work



Damage 6: Boot lid / rear door: Boot lid - dent(s) - Smooth repair work



Damage 6: Boot lid / rear door: Boot lid - dent(s) - Smooth repair work



Damage 6: Boot lid / rear door: Boot lid - dent(s) - Smooth repair work



Damage 7: 2nd wheel set: 1 alloy rim - Scratched - Loss in value



Damage 7: 2nd wheel set: 1 alloy rim - Scratched - Loss in value



Damage 8: 2nd wheel set: 1 alloy rim - Scratch(es) - Loss in value



Damage 8: 2nd wheel set: 1 alloy rim - Scratch(es) - Loss in value



Damage 8: 2nd wheel set: 1 alloy rim - Scratch(es) - Loss in value



Damage 8: 2nd wheel set: 1 alloy rim - Scratch(es) - Loss in value



Damage 8: 2nd wheel set: 1 alloy rim - Scratch(es) - Loss in value



Damage 9: 2nd wheel set: 1 alloy rim - Damaged - Replace



Damage 9: 2nd wheel set: 1 alloy rim - Damaged - Replace



Damage 10: 2nd wheel set: 1 alloy rim - Scratched - Replace



Damage 10: 2nd wheel set: 1 alloy rim - Scratched - Replace



Damage 10: 2nd wheel set: 1 alloy rim - Scratched - Replace



Damage 10: 2nd wheel set: 1 alloy rim - Scratched - Replace



Damage 10: 2nd wheel set: 1 alloy rim - Scratched - Replace



Damage 11: Rear bumper: Rear bumper - Scratch(es) - Paint



Damage 11: Rear bumper: Rear bumper - Scratch(es) - Paint



Damage 11: Rear bumper: Rear bumper - Scratch(es) - Paint



Damage 11: Rear bumper: Rear bumper - Scratch(es) - Paint



Damage 11: Rear bumper: Rear bumper - Scratch(es) - Paint



Damage 11: Rear bumper: Rear bumper - Scratch(es) - Paint



Damage 11: Rear bumper: Rear bumper - Scratch(es) - Paint



Damage 12: Front bumper: Front bumper - Scratch(es) - Paint



Damage 12: Front bumper: Front bumper - Scratch(es) - Paint



Damage 12: Front bumper: Front bumper - Scratch(es) - Paint