

Expertise

Protocol number: 46253947
Order No. / Reference: 26461376
Inspection date: 24 Jun 2026

Manufacturer: Skoda

Model: Kodiaq 2.0 TDI 4x4 DSG Sportline

VIN: TMBLN7NS5P8046341



Vehicle details

Manufacturer / Type / Model / Equipment

Skoda Kodiaq 2.0 TDI 4x4 DSG Sportline

Vehicle Identification number TMBLN7NS5P8046341

Mileage (Read) 146,120 km

First registration 28 Apr 2023

Number of holders 1

Power / Engine displacement 147 kw / 1,968 ccm

Fuel type / Cylinder Diesel / 4

Gearbox / Number of gears Automatic / 7

Type of drive All-wheel drive

Type of vehicle SUV

Colour / colour code stahlgrau

Doors / Seats 5 / 5

Upholstery type Alcantara / Leather

Colour of upholstery Anthracite-Grey



Vehicle details

Maintenance booklet / proof	digital proof / complete	Next maintenance in	6,800 km
Last service on / at	11/2025 at 122,836 km		
Key is / should be	2 / 2	FZG documents	ZB#2 (B) was available (copy), ZB#1 (S) was not available.
		Letter No.	GQ567483
Previous damage / Accident	Detectable	Repainting	Detectable
Inspection conditions	sufficient	Lifting equipment / pit	No
Test drive	Not performed	Engine function test	Performed
Manufacturer key number/ type code number	8004 / AVW 00647		
Emission standard	EURO6;WLTP;AP;PI/CI; M, N1 I	fine dust sticker	
Permitted total weight	2,410 kg	Empty weight	

Tyres

Mounted tyres

#	Tyre size	Type of tyre	Manufacturer	Tread depth
1)	235/50 R19 99V	Summer tyres on Light alloy	Hankook	4mm / 4mm
2)	235/50 R19 99V	Summer tyres on Light alloy	Hankook	6mm / 6mm

Additional tyres

#	Tyre size	Type of tyre	Manufacturer	Tread depth
1)	235/50 R19 99H	Winter tyres on Light alloy	Bridgestone	6mm / 6mm
2)	235/50 R19 99H	Winter tyres on Light alloy	Bridgestone	7mm / 7mm

Replacement

Typ	Tyre size	Type of tyre	Manufacturer	Tread depth
	Tirefit	Expiration date 02/2027		

Legend: Tread depth information for the left tire is listed first, for the right tire it is listed second on the axle in the direction of travel.

TÜV SÜD Auto Partner GmbH
Wiesenring 2
04159 Leipzig

Inspection location
Hartmann Fleet Professionals GmbH
Leerenstraße 25
29683 Bad Fallingbommel



Equipment



Standard equipment

- 12V socket in the center console and in the trunk
- Storage compartments behind the wheel arches in the trunk
- Airbag, driver's knee airbag
- Airbag, head airbags
- Allergen filter
- Anti-lock braking system (ABS)
- Dashboard in black / black, door trim in black with microfiber inlay
- Electrically adjustable and heated exterior mirrors with integrated side indicators
- Care Connect: Proactive services (10-year term) (Remote Access (1-year term))
- Dark Carbon decorative inlay
- Digital Cockpit (8")
- Third brake light (in the rear spoiler (LED))
- eCall (automatic emergency call function in case of an accident with airbag deployment)
- ESC Electronic Stability Control
- Driving profile selection
- Chassis: Adaptive chassis DCC including driving profile selection (including off-road assistant for 4x4 drive)
- High Beam Assist (Light Assist)
- front and rear floor mats
- Front and rear footwell lighting
- Cruise control
- Tinted windows
- Isofix anchorage on the outer rear seats including top tether
- Paint finish: Special paint finish, solid color
- LED ambient lighting (decorative strips in the door panels with selectable color climate, LED reading lights in the front, LED lighting for the make-up mirrors in the sun visors)
- Steering wheel: Sport leather steering wheel with multifunction buttons including paddle shifters (height and reach adjustable)
- Engine drag torque control (MSR)
- Fog lights with integrated LED daytime running lights
- Upholstery: Microfiber Sport-Black
- Radio: Bolero infotainment system (Bolero music system - 8" capacitive color display - voice control)
- Radio accessories: Wireless SmartLink
- Wheels: 19" alloy wheels Triglav anthracite polished (7Jx19 tires 235/50 R19 99V ET43)
- Heated windshield washer nozzles, front
- Electromechanical power steering
- Seats: Heated front and outer rear seats
- Seats: Adjustable lumbar support in the front seats
- Seats: Electrically adjustable front seats with memory function
- Seats: Remote release of the rear seat backrests (2nd row) in the boot
- Sun visor on driver and passenger side with illuminated vanity mirror
- Speed limiter
- Bumpers painted in body color
- Storage compartment on the left wheel arch
- front aero windshield wipers
- Airbag for driver and front passenger (passenger airbag can be deactivated)
- Airbag, front side airbags
- Permanent all-wheel drive
- Traction control (ASR)
- Electrically folding exterior mirrors including interior and driver's side mirrors with automatic dimming
- Hill start assist
- Hydraulic brake assist (HBA)
- Black headliner
- Roof rails, black
- Diesel particulate filter
- Tachometer
- Easy Start (start-stop button)
- Electronic parking brake including auto-hold function
- Electronic transverse differential lock (XDS+)
- Driving light assistant and rain sensor ((tunnel light, coming and leaving home function))
- Electric windows front and rear (including anti-pinch protection and child safety lock)
- Front radar assistant including city emergency braking function with pedestrian detection
- Closed storage compartment on the driver's side
- Transmission: 7-speed dual-clutch transmission (DSG)
- Illuminated glove compartment
- Boot cover, roll-up and removable
- Front headrests are fixed, rear headrests are height-adjustable.
- LED matrix headlights and dynamic high beam assist (Light Assist)
- LED taillights in crystal glass look with animated turn signals
- Reading lights at the front of the headliner
- Rear center armrest with cup holders
- Front center armrest, including storage compartment
- Multi-collision brake
- Stainless steel pedal design
- Progressive steering
- Radio accessories: 8 speakers
- Radio accessories: Digital radio reception DAB+
- Tire pressure monitoring
- Rear seat backrest split 60:40, foldable, longitudinally adjustable, backrest angle adjustable
- Headlights washer / wiper system
- Kodiaq safety belts (Height-adjustable three-point seat belts in the front, with belt tensioners - Three three-point seat belts in the rear - Belt fastening indicator in the front and in the second row of seats)
- Seats: Height-adjustable front seats



- Sunset (rear window and rear side windows tinted dark)
- Telephone: Comfort hands-free telephone system including phone box (with inductive charging function (connection via external antenna))
- Variable fastening concept in the trunk
- Immobiliser

- Skoda Care Connect (SOS emergency call function (eCall, including automatic activation in the event of an accident with airbag deployment) - Mobility service (connection for rapid assistance in case of breakdown) - Information service (connection to the hotline for all questions regarding vehicle functions) - Free remote vehicle access for one year with access to vehicle data/functions via smartphone, e.g., parking position, activating hazard warning lights, current fuel level, etc.)
- Front door sill trims
- Lashing eyes in the trunk
- Central locking with remote control (two vehicle keys)

Extra equipment

- Swiveling trailer hitch (with electric release, including trailer stabilization)
- Climatronic air conditioning (3-zone) (fully automatic, separately adjustable for driver, front passenger and rear seats, including humidity sensor and odor and allergen filter)
- Package: Family (Removable waste bin for the door panel - Sunshades for the rear side windows - Door edge protectors)
- Package: Sleeping package (Ambition, Style, Sportline) (Outer headrests in the 2nd row of seats with sleeping function - sleeping blanket - Lounge Step comfort floor mats - sunshades for the rear side windows)
- Front and rear parking sensors
- Variable loading floor in the trunk

- Traveller assistance system (DSG) (Predictive Adaptive Cruise Control pACC (control range up to 210 km/h) - Lane Assist - Adaptive Lane Guidance - Traffic Jam and Emergency Assist - Traffic Sign Recognition)
- Package: Business Columbus (Sportline) (Dynamic radio navigation system Columbus - 9.2" capacitive color display - Digital Cockpit Plus (10") - Driver fatigue detection - 230V socket and a USB charging port (Type-C) on the back of the front center armrest - KESSY keyless entry - Electric tailgate operation including comfort opening - Luggage net partition - Infotainment Online (3-year subscription))
- Electric panoramic sunroof including sunshade (no glasses compartment in the headliner)
- Rear view camera
- Windscreen, wirelessly heated

Brief expert findings

Documents submitted	At the time of the inspection, the vehicle registration certificate Part 2 (title) was available, but the vehicle registration certificate Part 1 (document) was not. (Copy)
VIN comparison	The vehicle identification number (VIN) was read from the vehicle and its conformity with the submitted documents was confirmed by the undersigned during the inspection.
Inspection	The inspection conditions were sufficient for the assessment of the vehicle. No lifting equipment or pit was available for inspecting the vehicle. Therefore, inspection of the vehicle's underside was only possible to a limited extent.
Test drive	No test drive/shunting maneuver was carried out during the inspection of the vehicle.
Engine function test	An engine test run was performed.

Value reducing factors

No.	Component group	Description
1	Misc.	Inspection / maintenance (Verspätet Durchgeführt) - No deduction
2	Wing mirror - left side	Cap - Scratch(es) - Smart repair
3	Boot lid / rear door	Boot lid - Glued / labelled - De-glue / neutralise
4	Roof	Roof - dent(s) - Smooth repair work
5	Door - front right side	Brightware - lower - Scratch(es) - Smart repair



Wear and tear

No.	Component group	Description
1	Boot lid / rear door	Boot lid - dent(s) - No deduction
2	Vehicle glazing	Windscreen - Stone chips - No deduction
3	Bonnet	Bonnet - Stone chips - No deduction
4	Front bumper	Front bumper - Stone chips - No deduction
5	Rear bumper	Rear bumper - Scratch(es) - No deduction

The vehicle shows signs of wear and tear commensurate with its age and use.

Previous damages

No.	Previous damage	Extent of damage (Net)
1	Side right, Provided by user / customer, from 27 Feb 2026	1.791,77 €

Paint coat thickness measurement

Side panel - rear right side	219 µm	Door - rear right side	463 µm
Door - front right side	238 µm		

Order/Scope of Order

An order was placed to prepare a sales report for the described vehicle. This report includes the following:

- Description of key vehicle information
- Documentation of equipment features
(Delivery by third-party service providers)
- Documentation of damage, defects, missing parts
- Documentation of prior damage, unrepaired prior damage, repainting
- A brief visual or functional inspection of the equipment details, if possible.
(Functional testing of driver assistance systems is not included in the scope of services!)
- a photographic documentation of the vehicle

Basis for the order

This product is based on the guidelines for vehicle returns and valuations published by Alphabet Fleet GmbH. The expert makes the specific findings in each individual case objectively, within the framework of the prescribed standards, based on their own expertise.

The vehicle inspection takes place in a fully assembled, unassembled state.

Damage or defects that can only be detected during disassembly/diagnostic work or through further investigation remain within the realm of prognostic risk. An increased risk exists due to concealed defects caused by fraudulent misrepresentation and which were not identifiable by the expert.

Damage or defects resulting from normal use or wear and tear of the vehicle will be accepted in accordance with the applicable standard.

There was no explicit identification or monetary consideration of the expected features within the product.

Features which, in their nature and extent, slightly exceed normal use but do not constitute unacceptable damage, will be documented and indicated as signs of wear, if applicable.

Damage or defects that, according to the applicable standard, can no longer be attributed to normal use or wear and tear are listed under "Value Reducing Factors" in the product description.

Depending on the product specification, a monetary ID can be provided. If this takes place, the costs can be 100% d or pro rata depending on the vehicle's age and mileage.



Previous damages

According to available information previous damages were repaired at the vehicle. Traces of repairs, which allow conclusions about the area of repair, were not recognizable during the inspection.

Comments

- Der beiliegende Winterradsatz ist kein Bestandteil des Auslieferungsumfangs.



Figure 1: Diagonal front (left)



Figure 2: Diagonal front (right)



Figure 3: Diagonal rear (left)



Figure 4: Diagonal rear (right)



Figure 5: Interior - front



Figure 6: Interior - rear



Figure 7: Instrument cluster



Figure 8: Instrument panel



Figure 9: Interior 360° view



Figure 10: Cargo area



Figure 11: VIN



Figure 12: Mounted tyres



Figure 19: Misc.



Figure 20: Misc.



Figure 21: Misc.



Figure 22: Misc.



Figure 23: Misc.

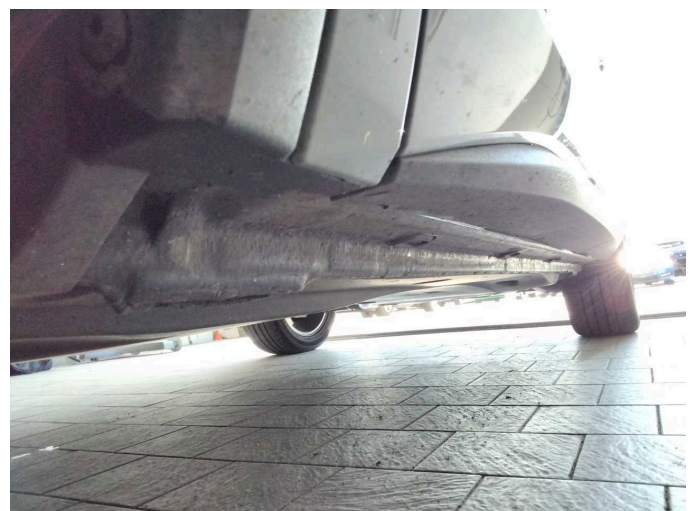


Figure 24: Misc.



Figure 25: Misc.



Figure 26: Misc.



Figure 27: Misc.



Figure 28: Misc.

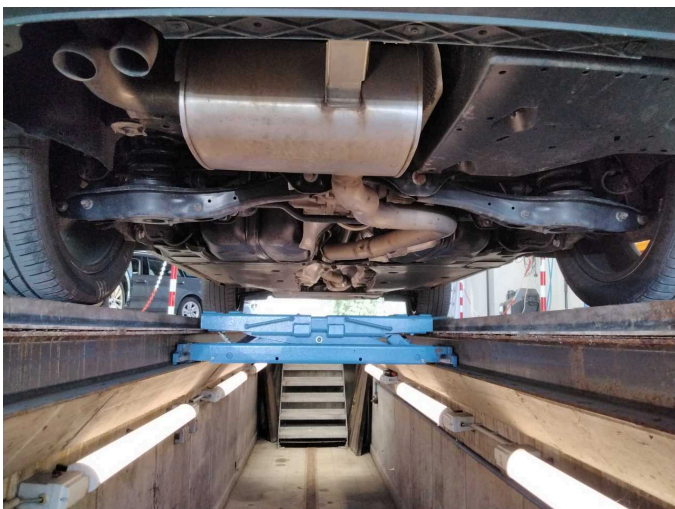


Figure 29: Misc.



Figure 30: Misc.



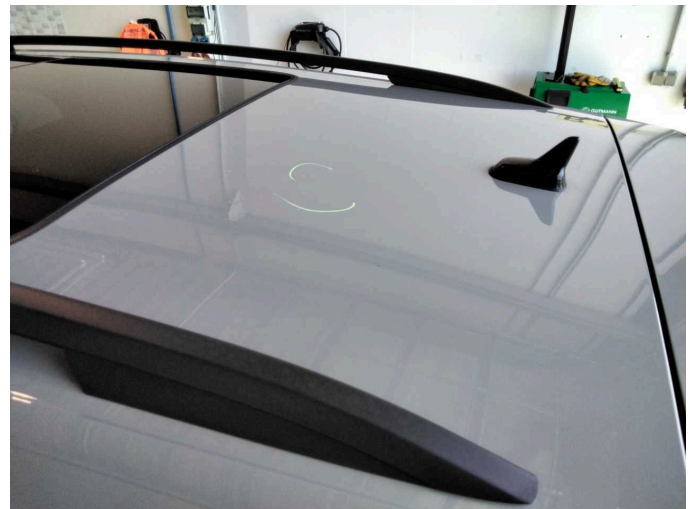
Damage 2: Wing mirror - left side: Cap - Scratch(es) - Smart repair



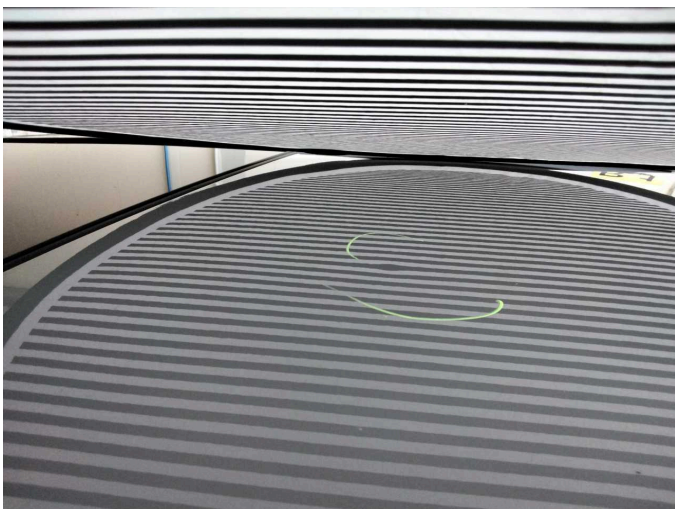
Damage 2: Wing mirror - left side: Cap - Scratch(es) - Smart repair



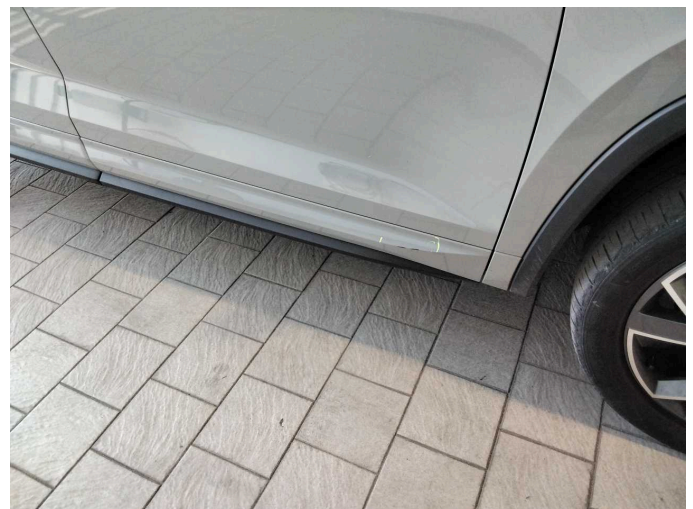
Damage 3: Boot lid / rear door: Boot lid - Glued / labelled - De-glu / neutralise



Damage 4: Roof: Roof - dent(s) - Smooth repair work



Damage 4: Roof: Roof - dent(s) - Smooth repair work



Damage 5: Door - front right side: Brightware - lower - Scratch(es) - Smart repair



Damage 5: Door - front right side: Brightware - lower - Scratch(es) - Smart repair



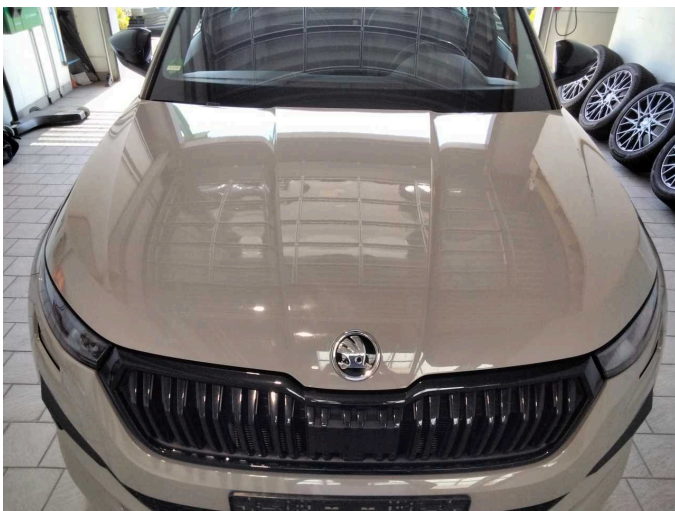
Wear and tear 1: Boot lid / rear door: Boot lid - dent(s) - No deduction



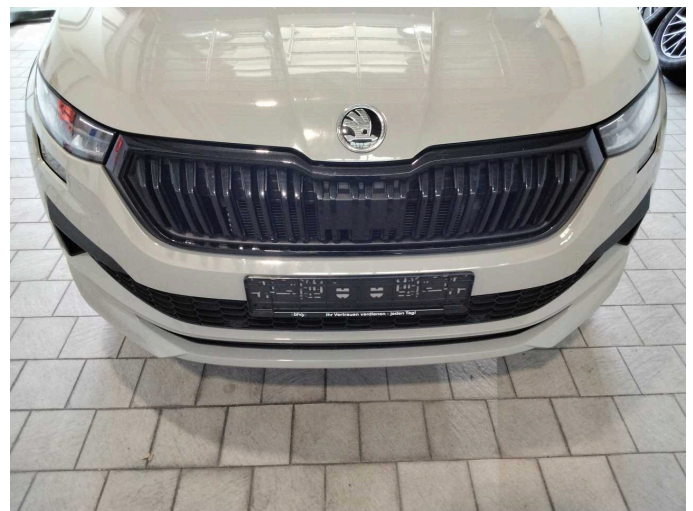
Wear and tear 1: Boot lid / rear door: Boot lid - dent(s) - No deduction



Wear and tear 2: Vehicle glazing: Windscreen - Stone chips - No deduction



Wear and tear 3: Bonnet: Bonnet - Stone chips - No deduction



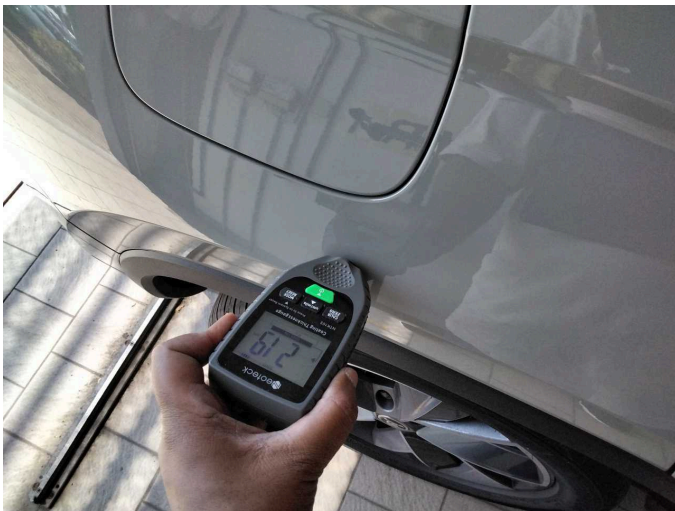
Wear and tear 4: Front bumper: Front bumper - Stone chips - No deduction



Wear and tear 5: Rear bumper: Rear bumper - Scratch(es) - No deduction



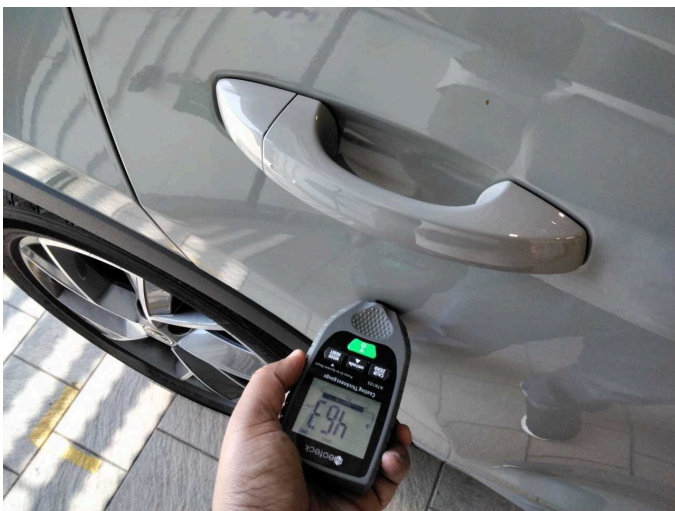
Wear and tear 5: Rear bumper: Rear bumper - Scratch(es) - No deduction



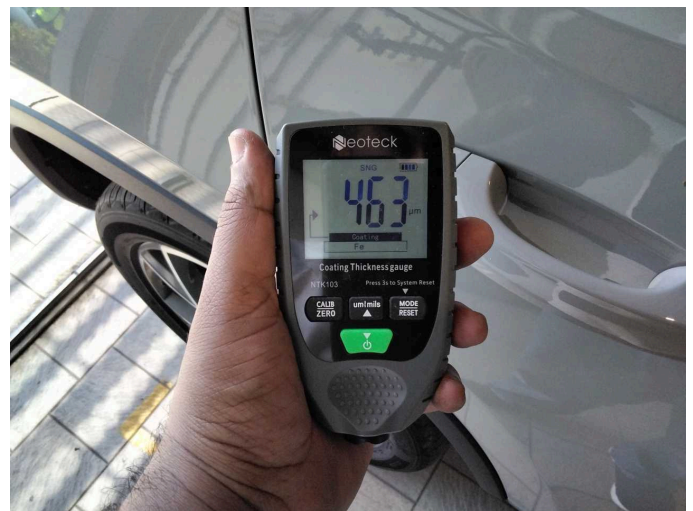
Side panel - rear right side: 219 µm



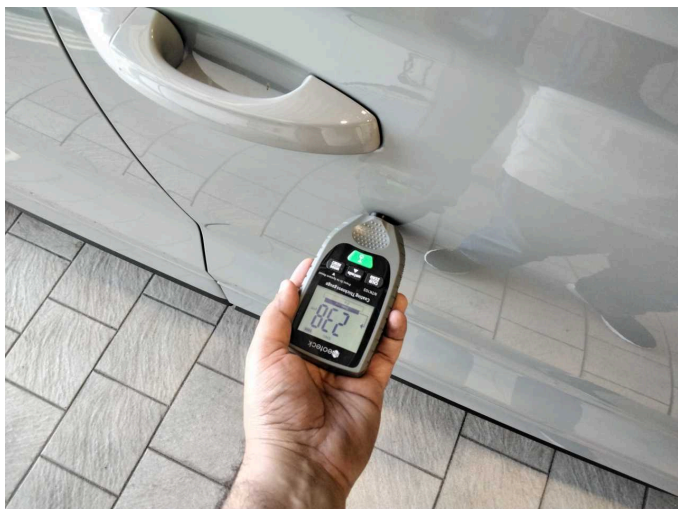
Side panel - rear right side: 219 µm



Door - rear right side: 463 µm



Door - rear right side: 463 µm



Door - front right side: 238 µm



Door - front right side: 238 µm



Wartungshistorie

(gemäß Auftraggeber Informationen)

Fahrgestellnummer: TMBLN7NS5P8046341
Hersteller / Modell: SKODA SKODA Kodiaq 2.0 TDI 4x4 DSG Sportline

Datum	KM-Stand	Beschreibung
04.05.2026	141.933	AU
06.11.2025	122.836	Bremse Sonstiges; Bremsflüssigkeit; Bremsflüssigkeit ern; Bremsklötze hinten; Bremsklötze vorne; Bremsscheiben + Klötze h; Bremsscheiben + Klötze v; Bremsscheiben hinten; Bremsscheiben vorne; Getriebeöl ern/ prüfen; Motoröl b. Wartung; Ölfilter ern; Ölwechsel - Hinterachse; Regelwartungsdienst; Reparatur Sonstiges; Wartung Sonstiges
30.04.2025	93.028	Kraftstofffilter ern; Luftfiltereinsatz ern; Motoröl b. Wartung; Ölfilter ern; Regelwartungsdienst; Systemtest/Eigendiagnose; Wartung Sonstiges
26.08.2024	62.159	Bremse Sonstiges; Bremsklötze hinten; Bremsklötze vorne; Bremsscheiben hinten; Bremsscheiben vorne; Motoröl b. Wartung; Ölfilter ern; Regelwartungsdienst; Wartung Sonstiges
18.12.2023	29.957	Motoröl b. Wartung; Ölfilter ern; Regelwartungsdienst; Wartung Sonstiges