

## Expertise

Protocol number: 45517102  
Order No. / Reference: 26366638  
Inspection date: 7 May 2026

Manufacturer: Opel

Model: Astra Sports Tourer 1.5 D Automatik Business Elegance

VIN: VXKFCYHZTP1075925



### Vehicle details

#### Manufacturer / Type / Model / Equipment

Opel Astra Sports Tourer 1.5 D Automatik Business Elegance

**Vehicle Identification number** VXKFCYHZTP1075925

**Mileage (Read)** 67,695 km

**First registration** 5 Dec 2023

**Number of holders** 1

**Next periodical technical inspection** 12/2026

(Report not on hand)

**Power / Engine displacement** 96 kw / 1,499 ccm

**Fuel type / Cylinder** Diesel / 4

**Gearbox / Number of gears** Automatic / 8

**Type of drive** Front drive

**Type of vehicle** Station wagon

**Colour / colour code** Kobalt Blau Metallic

**Doors / Seats** 5 / 5

**Upholstery type** Cloth / leather combination

**Colour of upholstery** Black-Anthracite

**Re-import** no

**Vehicle with smoke odor** no

**readiness to drive** Roadworthy



## Vehicle details

<b>Maintenance booklet / proof</b>	Available / complete	<b>Next maintenance in</b>	11 Monat(e)
<b>Last service on / at</b>	09/2025 at 51,315 km		
<b>Key is / should be</b>	2 / 2	<b>FZG documents</b>	ZB#2 (B) was available (copy), ZB#1 (S) was not available.
		<b>Letter No.</b>	GY750980
<b>Previous damage / Accident</b>	None detectable	<b>Repainting</b>	Detectable
<b>Inspection conditions</b>	sufficient	<b>Lifting equipment / pit</b>	yes
<b>Test drive</b>	short drive on the company premises	<b>Engine function test</b>	Performed
<b>readiness to drive</b>	Roadworthy		
<b>Manufacturer key number/ type code number</b>	1889 / AEY 00087		
<b>Emission standard</b>	EURO6;WLTP;AP;PI/CI; M, N1 I	<b>fine dust sticker</b>	
<b>Permitted total weight</b>	1,980 kg	<b>Empty weight</b>	

## Tyres

### Mounted tyres

#	Tyre size	Type of tyre	Manufacturer	Tread depth
1)	225/45 R17 94V	Winter tyres on Light alloy	Falken	5mm / 5mm
2)	225/45 R17 94V	Winter tyres on Light alloy	Falken	5mm / 5mm

### Additional tyres

#	Tyre size	Type of tyre	Manufacturer	Tread depth
1)	225/45 R17 94V	Summer tyres on Light alloy	Michelin	5mm / 5mm
2)	225/45 R17 94V	Summer tyres on Light alloy	Michelin	6mm / 6mm

### Replacement

Typ	Tyre size	Type of tyre	Manufacturer	Tread depth
Tirefit		Expiration date 09/2028		

**Legend:** Tread depth information for the left tire is listed first, for the right tire it is listed second on the axle in the direction of travel.



## Equipment

### Standard equipment

- Storage compartments
- Airbag: Front airbags, driver and front passenger
- Airbag: Front and rear outer head airbags
- Automatic activation of the hazard warning lights
- Exterior mirror housings in black
- On-board computer
- Roof rails
- Tachometer
- Electronic Stability Program (ESP) and Traction Control with engine and brake intervention (TCPlus)
- Transmission: 8-speed automatic transmission
- rear window wiper
- Wiring harness for trailer hitch
- Dual-zone automatic climate control
- Paintwork: Roof in car color
- LED interior lighting
- Steering wheel: Leather steering wheel, flattened, perforated, with steering wheel remote control and paddle shifters
- Navigation system
- Electric parking brake
- Tire pressure monitoring system
- 180-degree reversing camera
- Keyless locking and starting system Keyless Open & Start
- safety net
- Heated seats, driver and passenger
- Solar Protect thermal insulation glazing
- 12V power outlet in the center console
- Electronic immobilizer
- Central locking with remote control
- Airbag: Chest-pelvis-side airbags, driver and front passenger
- Anti-lock braking system (ABS)
- Exterior mirrors, electrically adjustable, heated and folding
- Hill Start Assist
- third brake light
- Diesel particulate filter (DPF) maintenance-free
- Electronic brake force distribution (EBD)
- Electric windows front and rear
- Front collision warning system
- Back window, heater
- Interior rearview mirror, automatically dimming
- Air conditioning: Intelli-Air air quality system "Clean Cabin"
- Front headrests and 3 rear headrests, height adjustable
- LED ambient lighting
- LED headlights
- Steering wheel heating
- Illuminated makeup mirrors in both sun visors
- Center armrest, front and rear
- Fog light
- Tire repair kit
- Wheels: Alloy wheels 7.5 J x 17 (5 spokes) in silver/black
- Rear seat backrest folds forward in a 40:20:40 split
- Seat belts: Three-point seat belts in all seats
- Seats: Ergonomic active driver's seat, fabric/premium leatherette Isabella
- Start/Stop System
- Pre-wiring for ISOFIX child seat mounting system
- Wireless Charging

### Extra equipment

- Electric tailgate, sensor-controlled (self-opening and self-closing via foot gesture)
- Heated windscreen, ThermaTec
- Paint finish: Roof in carbon black
- Paint finish: Metallic Cobalt Blue

## Brief expert findings

Documents submitted	At the time of the inspection, the vehicle registration certificate Part 2 (title) was available, but the vehicle registration certificate Part 1 (document) was not. (Copy)
VIN comparison	The vehicle identification number (VIN) was read from the vehicle and its conformity with the submitted documents was confirmed by the undersigned during the inspection.
Inspection	The inspection conditions were sufficient for the assessment of the vehicle. Lifting equipment and/or a pit were available for examining the vehicle.
Test drive	A short maneuvering and shunting exercise was carried out on the company premises.
Engine function test	An engine test run was performed.
readiness to drive	The vehicle was roadworthy at the time of inspection.



## Value reducing factors

No.	Component group	Description
1	Trim / covers	Floor mats - Holes - Replace
2	Side panel - rear left side	Side panel - dent(s) - Smart repair
3	2nd wheel set	1 alloy rim - Scratch(es) - Loss in value
4	2nd wheel set	1 alloy rim - Scratched - Loss in value
5	Side panel - rear left side	Sill - Scratch(es) - Smart repair
6	Boot lid / rear door	Boot lid - Scratch(es) - Smart repair
7	Side panel - rear right side	Side panel - Scratch(es) - Smart repair
8	2nd wheel set	1 tyre - Broken / torn - Replace
9	2nd wheel set	1 alloy rim - Scratched - Replace
10	Rear bumper	Rear bumper - Scratch(es) - Paint

## Wear and tear

No.	Component group	Description
1	Wheel / tyres	Alloy rim - front left side - Scratched - No deduction
2	Wheel / tyres	Alloy rim - rear right side - Scratched - No deduction
3	Wheel / tyres	Alloy rim - front right side - Scratched - No deduction
4	Door - front left side	Door - Scratch(es) - No deduction
5	Front bumper	Front bumper - Scratch(es) - No deduction
6	Roof	Roof - dent(s) - No deduction
7	Door - front left side	Door edge - Scratch(es) - No deduction

The vehicle shows signs of wear and tear commensurate with its age and use.

## Repainting

### No. Repainting

- 1 Mudguard - right side, Professionally carried out, Invoice of repair done Non-existent
- 2 Door - front right side, Professionally carried out, Invoice of repair done Non-existent

## Paint coat thickness measurement

Mudguard - right side 192 µm | Door - front right side 187 µm

## Order/Scope of Order

An order was placed to prepare a sales report for the described vehicle. This report includes the following:

- Description of key vehicle information
- Documentation of equipment features  
*(Delivery by third-party service providers)*
- Documentation of damage, defects, missing parts
- Documentation of prior damage, unrepaired prior damage, repainting
- A brief visual or functional inspection of the equipment details, if possible.  
*(Functional testing of driver assistance systems is not included in the scope of services!)*
- a photographic documentation of the vehicle



## Basis for the order

This product is based on the guidelines for vehicle returns and valuations published by Alphabet Fleet GmbH. The expert makes the specific findings in each individual case objectively, within the framework of the prescribed standards, based on their own expertise.

The vehicle inspection takes place in a fully assembled, unassembled state.

Damage or defects that can only be detected during disassembly/diagnostic work or through further investigation remain within the realm of prognostic risk. An increased risk exists due to concealed defects caused by fraudulent misrepresentation and which were not identifiable by the expert.

Damage or defects resulting from normal use or wear and tear of the vehicle will be accepted in accordance with the applicable standard.

There was no explicit identification or monetary consideration of the expected features within the product.

Features which, in their nature and extent, slightly exceed normal use but do not constitute unacceptable damage, will be documented and indicated as signs of wear, if applicable.

Damage or defects that, according to the applicable standard, can no longer be attributed to normal use or wear and tear are listed under "Value Reducing Factors" in the product description.

Depending on the product specification, a monetary ID can be provided. If this takes place, the costs can be 100% d or pro rata depending on the vehicle's age and mileage.

## Previous damages

No apparent prior damage that had been repaired could be found on the vehicle.

## Comments

- Für den montierten Radsatz wurde kein Nachweis erbracht.

- Winterradsatz ist kein Bestandteil des Auslieferungsumfangs.



Figure 1: Diagonal front (left)



Figure 2: Diagonal front (right)



Figure 3: Diagonal rear (left)



Figure 4: Diagonal rear (right)



Figure 5: Interior - front



Figure 6: Interior - rear



Figure 7: Instrument cluster



Figure 8: Instrument panel



Figure 9: Interior 360° view



Figure 10: Cargo area

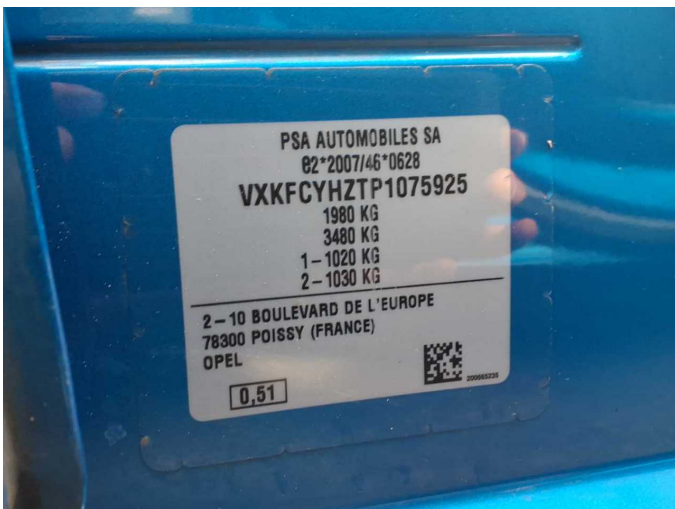


Figure 11: VIN



Figure 12: Mounted tyres



Figure 13: Documents

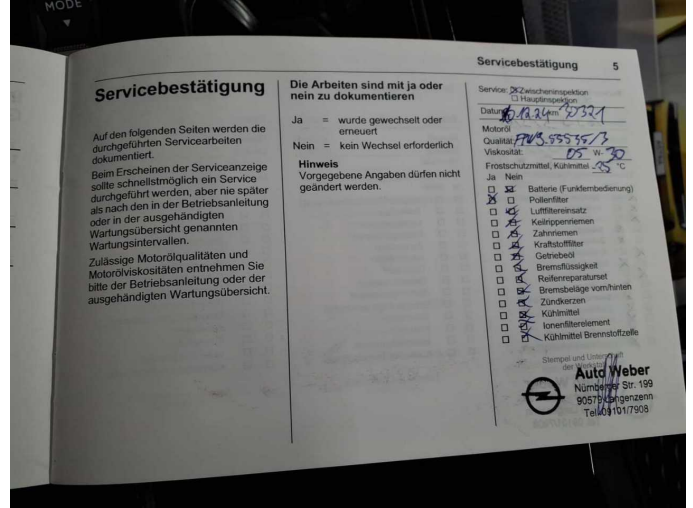


Figure 14: Documents



Figure 15: Documents

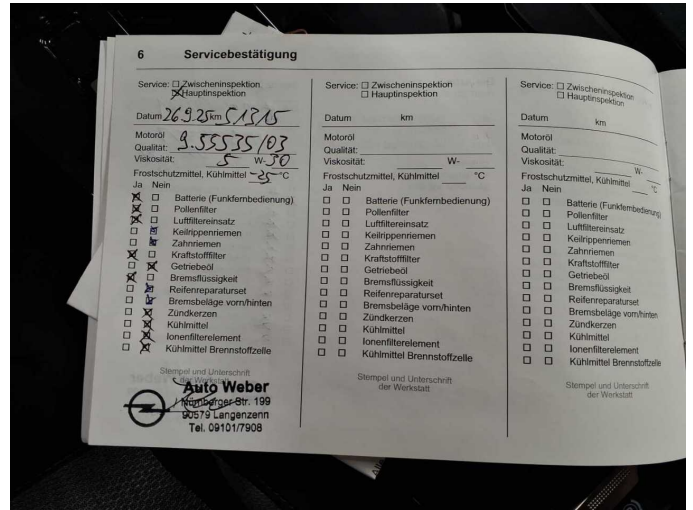


Figure 16: Documents



Figure 17: Additional tyres



Figure 18: Navigation



Figure 19: Misc.



Figure 20: Misc.



Figure 21: Misc.



Figure 22: Misc.



Figure 23: Misc.



Figure 24: Misc.



Figure 25: Misc.



Figure 26: Misc.



Figure 27: Misc.



Figure 28: Misc.



Figure 29: Misc.

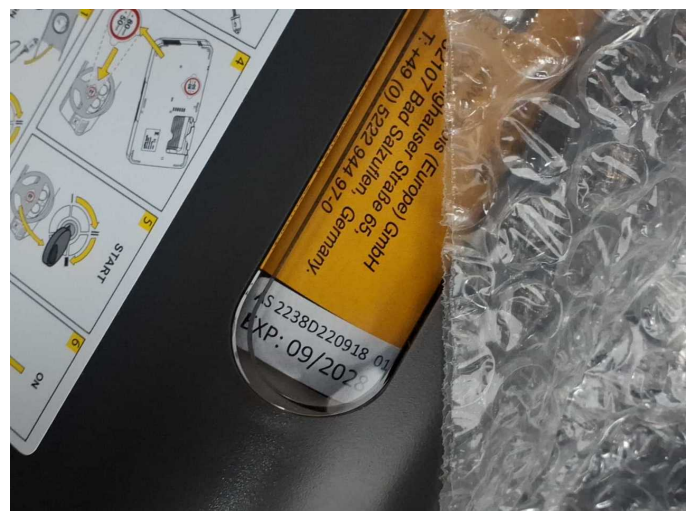
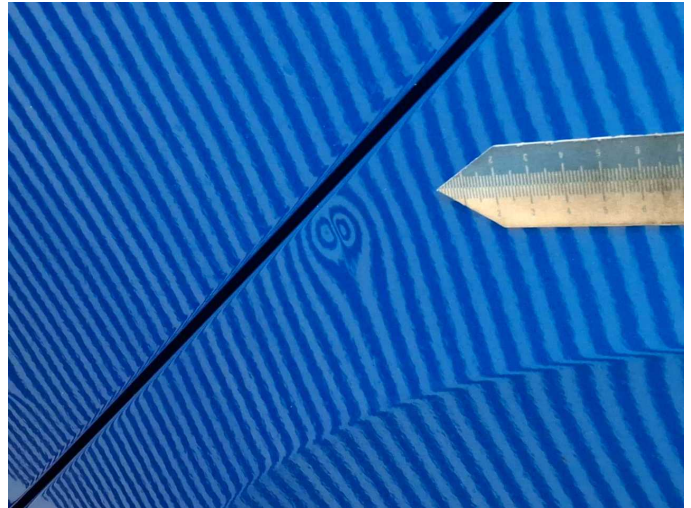


Figure 30: Misc.



**Damage 2:** Side panel - rear left side: Side panel - dent(s) - Smart repair



**Damage 2:** Side panel - rear left side: Side panel - dent(s) - Smart repair



**Damage 3:** 2nd wheel set: 1 alloy rim - Scratch(es) - Loss in value



**Damage 3:** 2nd wheel set: 1 alloy rim - Scratch(es) - Loss in value



**Damage 3:** 2nd wheel set: 1 alloy rim - Scratch(es) - Loss in value



**Damage 4:** 2nd wheel set: 1 alloy rim - Scratched - Loss in value



**Damage 4:** 2nd wheel set: 1 alloy rim - Scratched - Loss in value



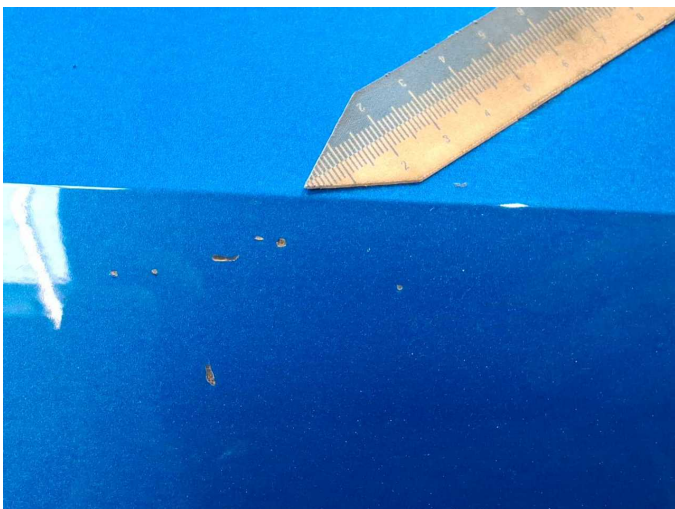
**Damage 5:** Side panel - rear left side: Sill - Scratch(es) - Smart repair



**Damage 5:** Side panel - rear left side: Sill - Scratch(es) - Smart repair



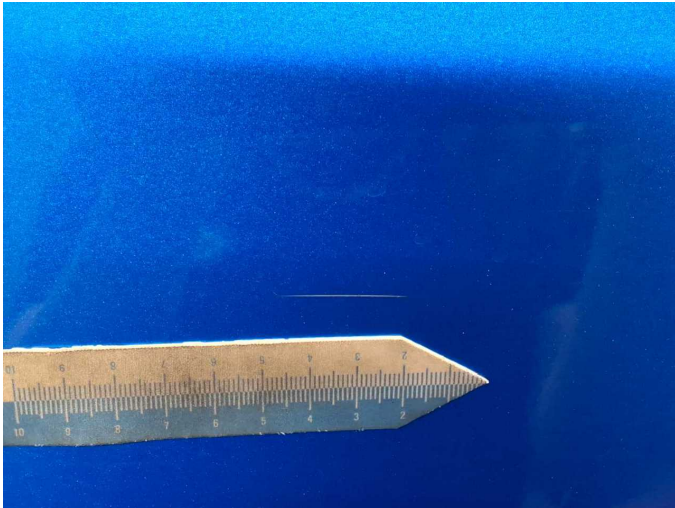
**Damage 6:** Boot lid / rear door: Boot lid - Scratch(es) - Smart repair



**Damage 6:** Boot lid / rear door: Boot lid - Scratch(es) - Smart repair



**Damage 7:** Side panel - rear right side: Side panel - Scratch(es) - Smart repair



**Damage 7:** Side panel - rear right side: Side panel - Scratch(es) - Smart repair



**Damage 8:** 2nd wheel set: 1 tyre - Broken / torn - Replace



**Damage 8:** 2nd wheel set: 1 tyre - Broken / torn - Replace



**Damage 9:** 2nd wheel set: 1 alloy rim - Scratched - Replace



**Damage 9:** 2nd wheel set: 1 alloy rim - Scratched - Replace



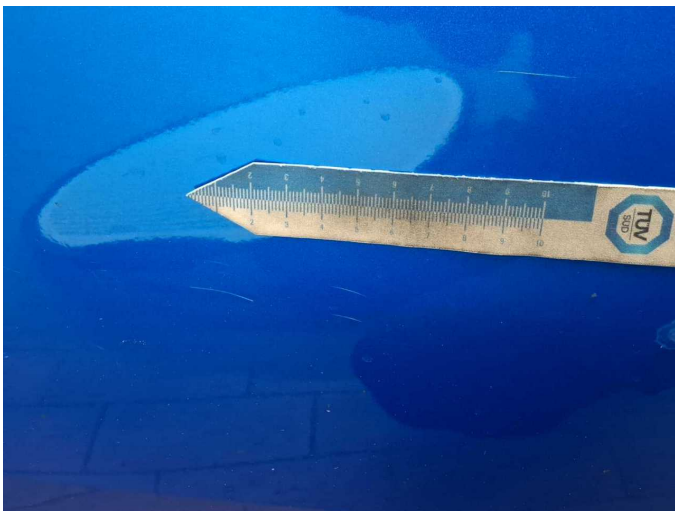
**Damage 9:** 2nd wheel set: 1 alloy rim - Scratched - Replace



**Damage 9:** 2nd wheel set: 1 alloy rim - Scratched - Replace



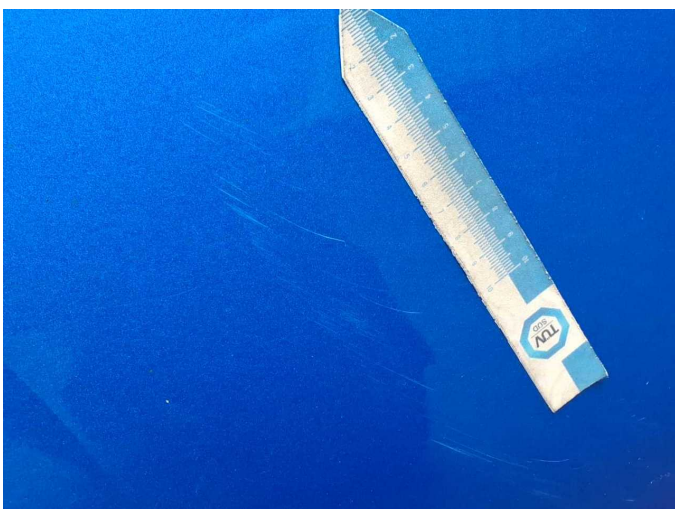
**Damage 10:** Rear bumper: Rear bumper - Scratch(es) - Paint



**Damage 10:** Rear bumper: Rear bumper - Scratch(es) - Paint



**Damage 10:** Rear bumper: Rear bumper - Scratch(es) - Paint



**Damage 10:** Rear bumper: Rear bumper - Scratch(es) - Paint



**Wear and tear 6:** Roof: Roof - dent(s) - No deduction



**Repainting 1:** Mudguard - right side



**Repainting 2:** Door - front right side