



Assessment

- Vehicle Inspection Report -

Number: 10215347
From: 12.03.2026

» Overview

Order number: 1002361188
Order completed: 12.03.2026 14:32
Report number: 10215347
VIN: WVVZZZ3CZPE037991



Front Left 3/4



Rear Right 3/4



Mileage



Assessment

- Vehicle Inspection Report -

Number: 10215347
From: 12.03.2026

» Vehicle Data

Vehicle category:	Passenger Car
Vehicle type:	EstateCar
Make:	Volkswagen
Model:	Passat
Manufacturers and type code:	0603 / COP
Date of first registration:	07.03.2023
Mileage:	46,167 km
Proof of mileage:	ReadOff
Exterior colour:	Scale Silver Metallic
Roof colour:	Scale Silver Metallic
Propulsion:	4 Wheel-drive
Fuel:	Diesel
Engine size (cc):	2,000 ccm
Performance:	147 kW (200 PS)
Length:	
Height:	
Width:	
Permitted total weight:	
Wheelbase:	
Number of powered axles:	2
Cylinders:	4
Euronorm:	Euro 6
Number of doors:	4
Number of seats:	5
Gearbox:	Automatic 7-speed
Upholstery type:	Lining fabrics
Interior colour:	Titanschwarz/Titanschwarz/Titanschwarz
Number of keys:	2

» Documents & Maintenance

Statutory inspection date:	03.2026
Registration certificate available:	Yes
Registration certificate received:	Yes
License plate:	Both
Maintenance book:	Digital
Maintenance:	Not testable
Maintenance last date:	
Maintenance last mileage:	
Remainder until next maintenance:	13,800 KM



Assessment

- Vehicle Inspection Report -

Number: 10215347
From: 12.03.2026

"Business Premium" package incl. navigation system	Decorative inserts "Piano Black" for center console
12-V outlet in center console rear and in luggage compartment	Digital radio reception DAB+
2 beverage holders in front with cover	Disc brakes in front
2 USB-C ports in the front, 1 USB-C charging socket on the center console in rear, charging capacity up to 45 W	Disc brakes in rear
230-V outlet in center console in rear	Diversity antenna for FM reception
3 head restraints in rear	Door and side trim panel in foam film and woven fabric
3-point seat belt for center rear seat	Driver alert system
3-point seat belts for outer rear seats	Driver and front passenger airbag with front passenger airbag deactivation
3-point seat belts in front with height adjustment and seat belt pretensioners	Driving on the right
4 alloy wheels "Istanbul" 7J x 17, painted in Sterling Silver	Dual-clutch transmission DSG DQ381
4-cylinder diesel engine 2.0 l	Dynamic Road Sign Display
4-cylinder diesel engine 2.0 l TDI, 147 kW	Electric auxiliary air heater
7-speed automatic transmission or dual-clutch transmission DSG for four-wheel drive, note: PR family EDF	Electromechanical parking brake with Auto Hold function
8 speakers	Electromechanical speed-sensitive power steering
Adaptive Cruise Control ACC stop & go incl. speed limiter	Electronic engine sound
Air Care Climatronic 3 zone automatic climate control w/ allergen filter, enhanced air filter a. controls in rear	Electronic immobilizer
AirStop® tires 215/55 R17	Electronic Stability Control and electromechanical brake booster
Alternator 140 A	Elimination of nameplate for engine designation on luggage compartment lid
App-Connect incl. App-Connect Wireless for Apple CarPlay and Android Auto	Elimination of Tire Mobility Set
Aspherical exterior mirror on driver side	Emergency call service; no registration required, service is activated upon delivery
Aut. headlight control w/ separate daytime running light, Leaving Home and manual Coming Home feature	Emission standard EU6 AP
Auto-dimming interior rearview mirror	Equipment options subset for Germany
Automatically-heated washer nozzles in front	Exterior mirrors, power-adjustable and heated, surround lighting, auto-dimming on driver side
Autonomous Emergency Braking Front Assist (for Adaptive Cruise Control ACC up to 210 km/h)	First aid kit, warning triangle and safety vest
Basic equipment variant	Folding luggage compartment floor
Battery 420 A (70 Ah)	Four-wheel drive 4MOTION
Black roof rails	Front center armrest, height- and longitudinally adjustable, w/ storage comp., 2 vents w/ chrome louvers in rear
Body-colored lower side trims	Front seats with height adjustment, ergoComfort seat on driver side, with electrical backrest adjustment
Bumpers with body-colored decorative trims	Front vent and rotary light switch illuminated, with chrome bezel
Business	Fuel system for diesel engine
Carpet mats in front and rear	Fuel tank with a volume of 66 l
Carrier frequency 433.92 MHz-434.42 Mhz	Gearshift knob in leather
Category 0	Headlight range control
Child safety lock	Heated front seats
Chrome trims on the side windows	High-beam control Light Assist
Comfort seats in front	Hill Start Assist
Curtain airbag system for front and rear passengers incl. side airbags in front	Illuminated vanity mirror in sun visors, extractable sun visors
Decorative inserts "Cross Hatch" for dashboard and door trim panels	Initial standard fuel filling
	Inserts of front seats and outer rear seats in fabric "Business"



Assessment

- Vehicle Inspection Report -

Number: 10215347
From: 12.03.2026

Instrument cluster with electronic speedometer, odometer and trip odometer, tachometer	Radio
Interior lights with switch-off delay and dimmer, 2 LED reading lights in front and 2 in rear	Rain sensor
ISOFIX anchorage points for mounting 2 child seats on rear seats, also for i-Size child seats	Rear exhaust tailpipe (standard)
Keyless Start without SAFELOCK	Rear fog light on one side, back-up light on both sides
Laminated safety glass windshield, heat- and sound-insulating	Rear suspension with fully automatic self-leveling suspension system
Leather-wrapped multi-function steering wheel with shifting paddles	Rear view camera system
LED entry/warning lights in front doors	Refrigerant R1234yf
LED front fog lamps and cornering light	Regional code " ECE " for radio
LED headlamps with LED separate daytime running light	Remote unlocking for tailgate/trunk lid
LED light unit in front footwell	Right exterior mirror, convex
LED rear combination lamps	Safety-optimized front head restraints, longitudinally and height adjustable
Left-hand drive	Semi-automated driving assistance TravelAssist and lane keeping system Lane Assist
License plate carrier in front and rear (ECE)	Service indicator 30 000 km or 2 years (variable)
LongLife Service Regime	Shock absorption in front
Luggage compartment cover extractable and removable	Small navigation system M&I (Media & Internet package)
Lumbar supports in front, power- adjustable on driver side, massage feature on driver side	Special identification label for EC for M1 passenger vehicles
Manual in German (Germany)	Standard battery/alternator capacity
Mass damper for steering wheel, 36 Hz	Standard climatic zones
Mistral Gray headliner	Standard engine starter
Mobile phone interface "Comfort" with inductive charging feature	Standard manufacturing sequence
Model update, week 45	Standard paint coating
Multifunction camera	Standard pedal cluster
Multi-function display "Premium" with multi-color display	Standard wheel bolts
Navigation system "Discover Media" incl. Streaming & Internet	Start-stop system with regenerative braking
Net partition	Suspension range 35 installation control only, no requirement forecast
No special edition	Textile luggage compartment lining
No special purpose vehicle, standard equipment	Tire Pressure Monitoring System
Non-folding front passenger seat backrest	Tires without specification of tire brand
Non-smoker's package: Storage compartment and 12-V outlet in front	Tool kit
Not hot country	Transport protection film (minimum protection) with additional transport protection measures
Online service, with OCU, with head unit coding, without engine immobilizer interconnection	Two-tone horn
Operating permit, alteration	Type approval country Germany
Park Distance Control - warning signals for obstacles in the front and rear	Unsplit rear bench seat, asymmetric folding backrest, center armrest with storage comp. and load-through hatch
Part set without country-specific prescriptive standard	Vehicle class differentiation -3G0-
Pedestrian monitoring	Vehicles with special upgrade measures
Plastic loading edge protection	Wagon
Plastic scuff plates in door apertures	Warning signal and warning light for front and rear seat belts not fastened
Preparation for We Connect and We Connect Plus	Weight range 6 installation control only, no requirement forecast
Privacy glass for rear side windows and rear window	Wheelbase
Proactive passenger protection system in combination with Front Assist	With electronic steering column lock



Assessment

- Vehicle Inspection Report -

Number: 10215347
From: 12.03.2026

Without activated carbon canister with SCR
Without Adaptive Chassis Control
Without add. lights (interior lighting)
Without additional front underbody guard
Without additional tires
Without alternative drive system
Without auxiliary heater/parking heater
Without CD/DVD for navigation
Without charging cable
Without child seat
Without clock
Without delivery equipment
Without differential lock
Without ECO function
Without electric motor (hybrid)
Without fire extinguisher
Without front passenger seat control
Without garage door opener
Without headlamp washer system
Without head-up display
Without integrated toll system
Without lane change assist
Without locking and starting systems
Without preparation for rotating beacon/siren combination
Without preparation for two-way radio installation
Without preparation for VTS (vehicle tracking system)
Without rear spoiler
Without roll-up sunshade
Without roof insert (standard roof)
Without seat ventilation/massage seat
Without second battery
Without special body measures
Without tie down straps/net/pocket
Without trailer hitch
Without vehicle inlet
Without voice control



Assessment

- Vehicle Inspection Report -

Number: 10215347
From: 12.03.2026

» Tyres

MOUNTED TYRES

There are currently one or more wheel sets on/in the vehicle that are not included in the scope of delivery.

Make	Location	Position	Type	Rim	Dimensions	Profile depth
Continental	Front	Left	Winter	Steel	215/60 R 16 99 H	5.0 mm
Continental	Front	Right	Winter	Steel	215/60 R 16 99 H	5.0 mm
Continental	Rear	Left	Winter	Steel	215/60 R 16 99 H	6.0 mm
Continental	Rear	Right	Winter	Steel	215/60 R 16 99 H	6.0 mm

Permitted: Yes**Roadworthy:** Yes

UNMOUNTED TYRES

Make	Location	Position	Type	Rim	Dimensions	Profile depth
Pirelli			Summer	Aluminium	215/55 R 17 94 W	6.0 mm
Pirelli			Summer	Aluminium	215/55 R 17 94 W	6.0 mm
Pirelli			Summer	Aluminium	215/55 R 17 94 W	6.0 mm
Pirelli			Summer	Aluminium	215/55 R 17 94 W	6.0 mm

Permitted: Yes**Roadworthy:** Yes

SPARE/EMERGENCY TYRE & ACCESSORIES

Toolkit present: Yes



Assessment

- Vehicle Inspection Report -

Number: 10215347
From: 12.03.2026

» Devaluation Factors

Nr	Location	Damage type	Repair type
1	Tailgate / Boot	Dent(s)	Paintless dent repair
2	Bumper R	Scratch(es)	Smart repair

» Usage Damages

Nr	Location	Damage type	Repair type
1	Internal boot lining R	Scratch(es)	Acceptable
2	Boot lid covering R	Scratch(es)	Acceptable
3	Door FR	Dent(s)	Acceptable
4	Roof pillar R	Dent(s)	Acceptable



Assessment

- Vehicle Inspection Report -

Number: 10215347
From: 12.03.2026

» Commercial devaluation

Known previous damages:	No
Previous damages detectable:	Yes
Repainting present:	Yes
Repainting professionally executed:	Yes
Paint thickness measurement performed:	Yes - with abnormalities/deviations

PAINTTHICKNESS MEASUREMENT RESULTS

Part	Paint (µm)
Paint thickness Wing FL (µm)	188.0
Paint thickness Door FL (µm)	179.0
Paint thickness Door RL (µm)	196.0
Paint thickness Bonnet (µm)	227.0

At least 3 measurements were carried out per component.



Assessment

Number: 10215347
From: 12.03.2026

- Vehicle Inspection Report -

» Notes On The Assessment

Details of the assignment and the scope of the assessment:

The order was placed to prepare a condition report on the described vehicle.

The vehicle condition assessment was carried out in accordance with the order on the basis of the standards for vehicle assessments specified by the client. The expert makes the findings in the individual case on the basis of his own expertise and at his own expert discretion.

Vehicle identification:

WVWZZZ3CZPE037991

VIN checked and matches documentation

Vehicle condition:

Well maintained general condition

Inspection condition:

Sufficient

Lifting platform/lifting equipment used:

Yes

Testdrive carried out:

No

Engine test carried out:

Yes



Assessment

- Vehicle Inspection Report -

Number: 10215347
From: 12.03.2026

» Remarks

This copy was generated electronically. It is valid without an original signature.

Additional notes on the condition report:

(12.03.2026 14:32) Nachlackierte Bauteile weisen leichte Fehlstellen auf.



Assessment

- Vehicle Inspection Report -

Number: 10215347
From: 12.03.2026

» Commercial Pictures



Front Left 3/4



Front Right 3/4



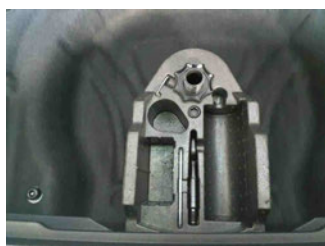
Rear Left 3/4



Rear Right 3/4



Mileage



Tools



Sill outer L



Sill outer R



Chassis nr



Wheel FL



Wheel FR



Wheel RL



Wheel RR



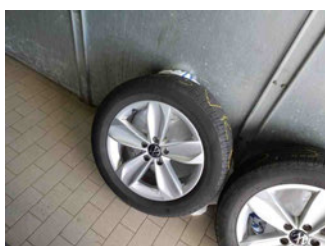
Additional wheel 1



Additional wheel 2



Additional wheel 3



Additional wheel 4



Central console



Engine compartment



Documents



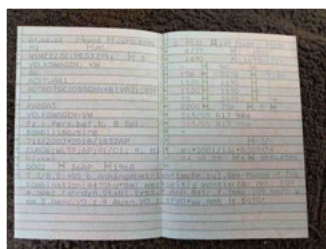
Assessment

- Vehicle Inspection Report -

Number: 10215347
From: 12.03.2026



Interior arrangement



Registration Certificate



Tyres in vehicle



Paint thickness Door RL



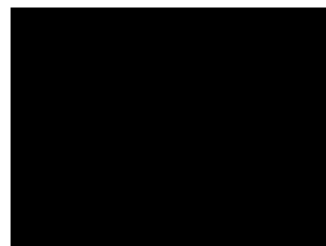
Paint thickness Door FL



Paint thickness Bonnet



Paint thickness Wing FL



History Maintenance



Interior - front



Interior - rear



GPS/Radio



Assessment

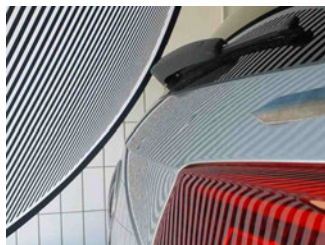
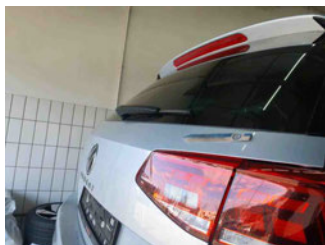
- Vehicle Inspection Report -

Number: 10215347
From: 12.03.2026

» Devaluation Damages

DEVALUATION FACTORS

1 - Tailgate / Boot - Dent(s) - Paintless dent repair



2 - Bumper R - Scratch(es) - Smart repair



USAGE DAMAGES

1 - Internal boot lining R - Scratch(es) - Acceptable



2 - Boot lid covering R - Scratch(es) - Acceptable





Assessment

- Vehicle Inspection Report -

Number: 10215347
From: 12.03.2026

3 - Door FR - Dent(s) - Acceptable



4 - Roof pillar R - Dent(s) - Acceptable

