

Expertise

Protocol number: 46183626
Order No. / Reference: 26574349
Inspection date: 29 Jun 2026

Manufacturer: Opel

Model: Astra 1.5 D Automatik Business Elegance

VIN: VXKFBYHZTP1029790



Vehicle details

Manufacturer / Type / Model / Equipment

Opel Astra 1.5 D Automatik Business Elegance

Vehicle Identification number VXKFBYHZTP1029790

Mileage (Read) 147,660 km

First registration 5 Jun 2023

Number of holders 1

Power / Engine displacement 96 kw / 1,499 ccm

Fuel type / Cylinder Diesel / 4

Gearbox / Number of gears Automatic / 8

Type of drive Front drive

Type of vehicle Station wagon

Colour / colour code Vulkan Grau Metallic

Doors / Seats 5 / 5

Upholstery type Cloth / leather combination

Colour of upholstery Black-Light grey



Vehicle details

Maintenance booklet / proof	digital proof / complete	Next maintenance in	6 Monat(e)
Last service on / at	12/2025 at 132,248 km		
Key is / should be	2 / 2	FZG documents	ZB#2 (B) was available (copy), ZB#1 (S) was not available.
		Letter No.	GS832742
Previous damage / Accident	None detectable	Repainting	None detectable
Inspection conditions	sufficient	Lifting equipment / pit	yes
Test drive	Not performed	Engine function test	Performed
Manufacturer key number/ type code number	1889 / AES 00087		
Emission standard	EURO6;WLTP;AP;PI/CI; M, N1 I	fine dust sticker	
Permitted total weight	1,940 kg	Empty weight	

Tyres

Mounted tyres				
#	Tyre size	Type of tyre	Manufacturer	Tread depth
1)	205/55 R16 91H	Winter tyres on Steel	Uniroyal	4mm / 4mm
2)	205/55 R16 91H	Winter tyres on Steel	Uniroyal	7mm / 7mm

Additional tyres				
#	Tyre size	Type of tyre	Manufacturer	Tread depth
1)	225/45 R17 94V	Summer tyres on Light alloy	Toyo	5mm / 5mm
2)	225/45 R17 94V	Summer tyres on Light alloy	Toyo	6mm / 5mm

Replacement				
Typ	Tyre size	Type of tyre	Manufacturer	Tread depth
	Tirefit	Expiration date 07/2028		

Legend: Tread depth information for the left tire is listed first, for the right tire it is listed second on the axle in the direction of travel.



Equipment

Standard equipment

- Storage compartments
- Airbag: Front airbags, driver and front passenger
- Airbag: Front and rear outer head airbags
- Automatic activation of the hazard warning lights
- Exterior mirror housings in black
- On-board computer
- Diesel particulate filter (DPF) maintenance-free
- Electronic brake force distribution (EBD)
- Electric windows front and rear
- Front collision warning system
- Back window, heater
- Interior rearview mirror, automatically dimming
- Air conditioning: Intelli-Air air quality system "Clean Cabin"
- Front headrests and 3 rear headrests, height adjustable
- LED ambient lighting
- LED headlights
- Steering wheel heating
- Illuminated makeup mirrors in both sun visors
- Center armrest, front and rear
- Fog light
- Tire repair kit
- Wheels: Alloy wheels 7.5 J x 17 (5 spokes) in silver/black
- Rear seat backrest folds forward in a 60:40 split
- Seat belts: Three-point seat belts in all seats
- Heated seats, driver and passenger
- Solar Protect thermal insulation glazing
- 12V power outlet in the center console
- Electronic immobilizer
- Central locking with remote control

Extra equipment

- Paint finish: Metallic

- Airbag: Chest-pelvis-side airbags, driver and front passenger
- Anti-lock braking system (ABS)
- Exterior mirrors, electrically adjustable, heated and folding
- Hill Start Assist
- third brake light
- Tachometer
- Electronic Stability Program (ESP) and Traction Control with engine and brake intervention (TCPlus)
- Transmission: 8-speed automatic transmission
- rear window wiper
- Wiring harness for trailer hitch
- Dual-zone automatic climate control
- Paintwork: Roof in car color
- LED interior lighting
- Steering wheel: Leather steering wheel, flattened, perforated, with steering wheel remote control and paddle shifters
- Navigation system
- Electric parking brake
- Tire pressure monitoring system
- 180-degree reversing camera
- Keyless locking and starting system Keyless Open & Start
- Seats: Ergonomic active driver's seat, fabric/premium leatherette Isabella
- Start/Stop System
- Pre-wiring for ISOFIX child seat mounting system
- Wireless Charging

- Seats: Ergonomic active seats for driver and front passenger, fabric/premium leatherette Isabella (certified by the German Campaign for Healthy Backs (AGR) - adjustable length, height, tilt, backrest angle, and seat cushion angle - electro-pneumatically adjustable lumbar support (height and length) - extendable thigh support - pockets on the backs of the front seats, driver and front passenger - fabric/premium leatherette Isabella, black - heated front seats and heated steering wheel)



Brief expert findings

Documents submitted	At the time of the inspection, the vehicle registration certificate Part 2 (title) was available, but the vehicle registration certificate Part 1 (document) was not. (Copy)
VIN comparison	The vehicle identification number (VIN) was read from the vehicle and its conformity with the submitted documents was confirmed by the undersigned during the inspection.
Inspection	The inspection conditions were sufficient for the assessment of the vehicle. Lifting equipment and/or a pit were available for examining the vehicle.
Test drive	No test drive/shunting maneuver was carried out during the inspection of the vehicle.
Engine function test	An engine test run was performed.

Value reducing factors

No.	Component group	Description
1	Seat - rear	Back seat (Sitze) - Soiled - Clean
2	Body	Body - Glued / labelled - De-glue / neutralise
3	2nd wheel set	1 alloy rim - Scratched - Replace
4	2nd wheel set	1 alloy rim - Scratched - Replace
5	2nd wheel set	1 alloy rim - Scratched - Replace
6	Braking system	Brake discs and pads - rear - Corrosion - Replace
7	Braking system	Brake discs and brake pads - front (Korrosion und) - Worn - Replace
8	Vehicle glazing	Windscreen - Stone chips - Replace

Wear and tear

No.	Component group	Description
1	Wheel / tyres	Tyre - front - Does not meet the leasing specifications - No deduction
2	2nd wheel set	1 alloy rim - Scratch(es) - No deduction

The vehicle shows signs of wear and tear commensurate with its age and use.

Order/Scope of Order

An order was placed to prepare a sales report for the described vehicle. This report includes the following:

- Description of key vehicle information
- Documentation of equipment features
(*Delivery by third-party service providers*)
- Documentation of damage, defects, missing parts
- Documentation of prior damage, unrepaired prior damage, repainting
- A brief visual or functional inspection of the equipment details, if possible.
(*Functional testing of driver assistance systems is not included in the scope of services!*)
- a photographic documentation of the vehicle



Basis for the order

This product is based on the guidelines for vehicle returns and valuations published by Alphabet Fleet GmbH. The expert makes the specific findings in each individual case objectively, within the framework of the prescribed standards, based on their own expertise.

The vehicle inspection takes place in a fully assembled, unassembled state.

Damage or defects that can only be detected during disassembly/diagnostic work or through further investigation remain within the realm of prognostic risk. An increased risk exists due to concealed defects caused by fraudulent misrepresentation and which were not identifiable by the expert.

Damage or defects resulting from normal use or wear and tear of the vehicle will be accepted in accordance with the applicable standard.

There was no explicit identification or monetary consideration of the expected features within the product.

Features which, in their nature and extent, slightly exceed normal use but do not constitute unacceptable damage, will be documented and indicated as signs of wear, if applicable.

Damage or defects that, according to the applicable standard, can no longer be attributed to normal use or wear and tear are listed under "Value Reducing Factors" in the product description.

Depending on the product specification, a monetary ID can be provided. If this takes place, the costs can be 100% d or pro rata depending on the vehicle's age and mileage.

Previous damages

No apparent prior damage that had been repaired could be found on the vehicle.

Comments

- Winterradsatz ist kein Bestandteil des Auslieferungsumfangs.



Figure 1: Diagonal front (left)



Figure 2: Diagonal front (right)



Figure 3: Diagonal rear (left)



Figure 4: Diagonal rear (right)



Figure 5: Interior - front

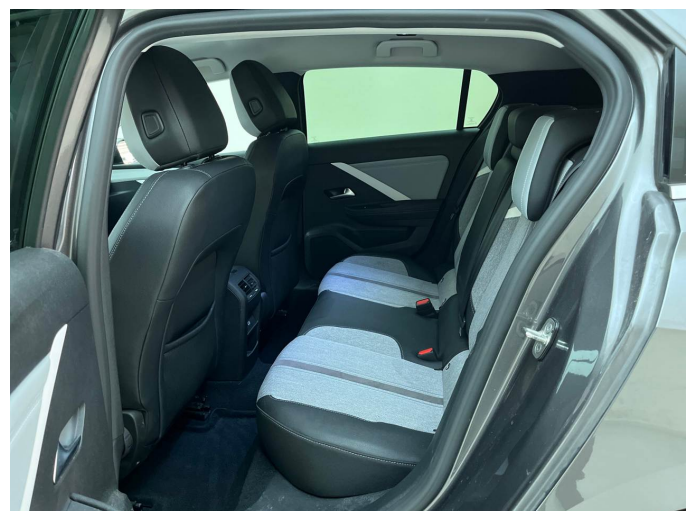


Figure 6: Interior - rear

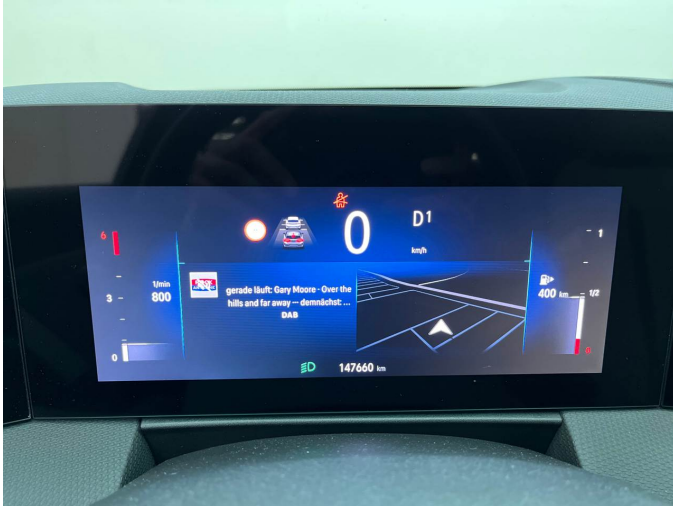


Figure 7: Instrument cluster



Figure 8: Instrument panel



Figure 9: Interior 360° view



Figure 10: Cargo area



Figure 11: VIN



Figure 12: Mounted tyres



Figure 13: Documents



Figure 14: Documents



Figure 15: Documents



Figure 16: Documents



Figure 17: Documents



Figure 18: Additional tyres



Figure 19: Navigation



Figure 20: Misc.



Figure 21: Misc.

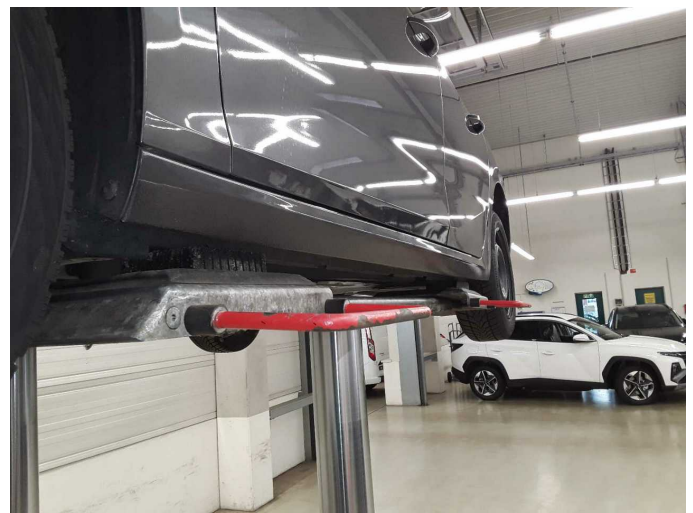


Figure 22: Misc.

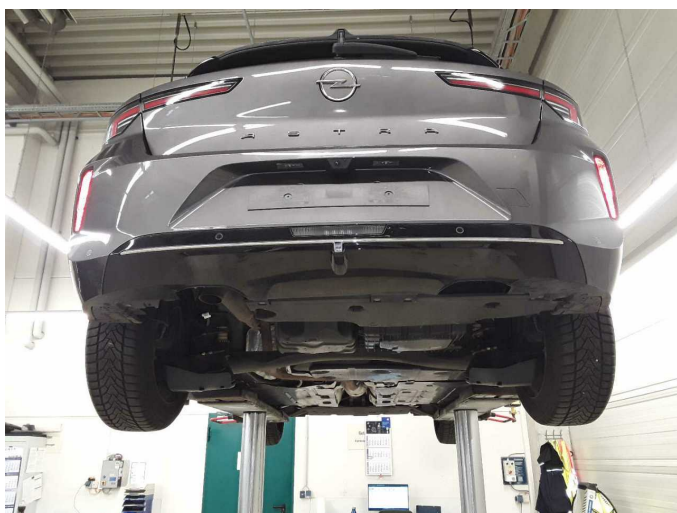


Figure 23: Misc.

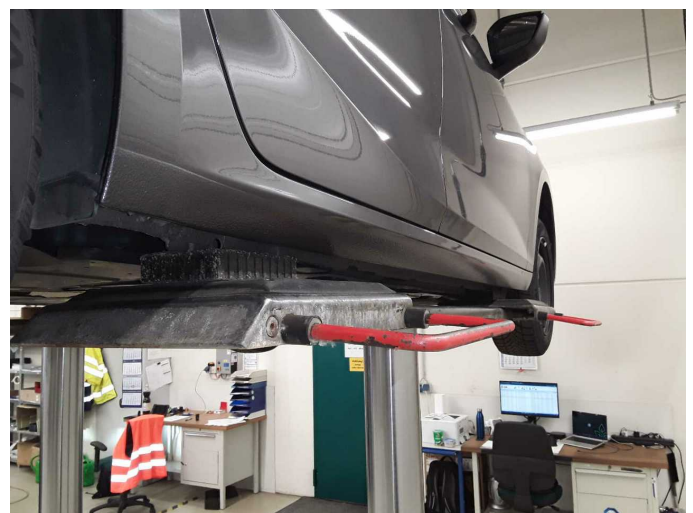


Figure 24: Misc.



Figure 25: Misc.



Figure 26: Misc.

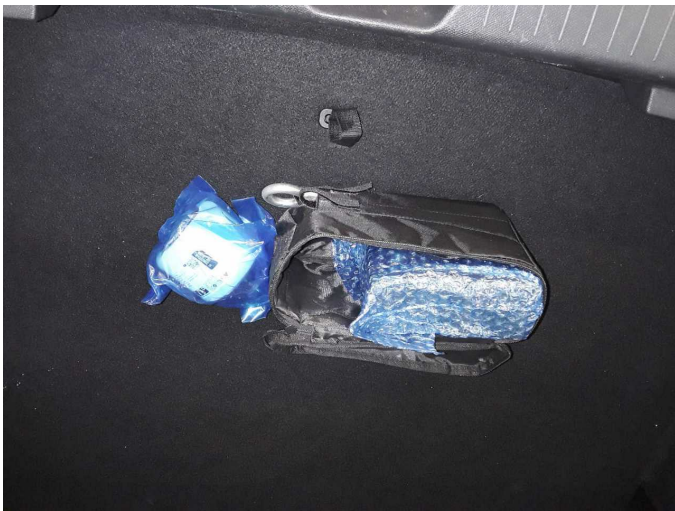


Figure 27: Misc.



Figure 28: Misc.



Damage 1: Seat - rear: Back seat (Sitze) - Soiled - Clean



Damage 1: Seat - rear: Back seat (Sitze) - Soiled - Clean



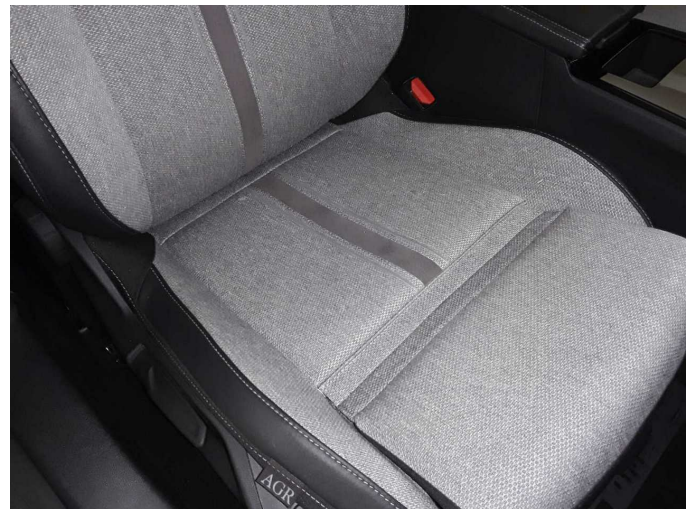
Damage 1: Seat - rear: Back seat (Sitze) - Soiled - Clean



Damage 1: Seat - rear: Back seat (Sitze) - Soiled - Clean



Damage 1: Seat - rear: Back seat (Sitze) - Soiled - Clean



Damage 1: Seat - rear: Back seat (Sitze) - Soiled - Clean



Damage 2: Body: Body - Glued / labelled - De-glue / neutralise



Damage 2: Body: Body - Glued / labelled - De-glue / neutralise



Damage 2: Body: Body - Glued / labelled - De-glove / neutralise



Damage 2: Body: Body - Glued / labelled - De-glove / neutralise



Damage 3: 2nd wheel set: 1 alloy rim - Scratched - Replace



Damage 3: 2nd wheel set: 1 alloy rim - Scratched - Replace



Damage 4: 2nd wheel set: 1 alloy rim - Scratched - Replace



Damage 4: 2nd wheel set: 1 alloy rim - Scratched - Replace



Damage 4: 2nd wheel set: 1 alloy rim - Scratched - Replace



Damage 4: 2nd wheel set: 1 alloy rim - Scratched - Replace



Damage 5: 2nd wheel set: 1 alloy rim - Scratched - Replace



Damage 5: 2nd wheel set: 1 alloy rim - Scratched - Replace



Damage 5: 2nd wheel set: 1 alloy rim - Scratched - Replace



Damage 6: Braking system: Brake discs and pads - rear - Corrosion - Replace



Damage 6: Braking system: Brake discs and pads - rear - Corrosion - Replace



Damage 6: Braking system: Brake discs and pads - rear - Corrosion - Replace



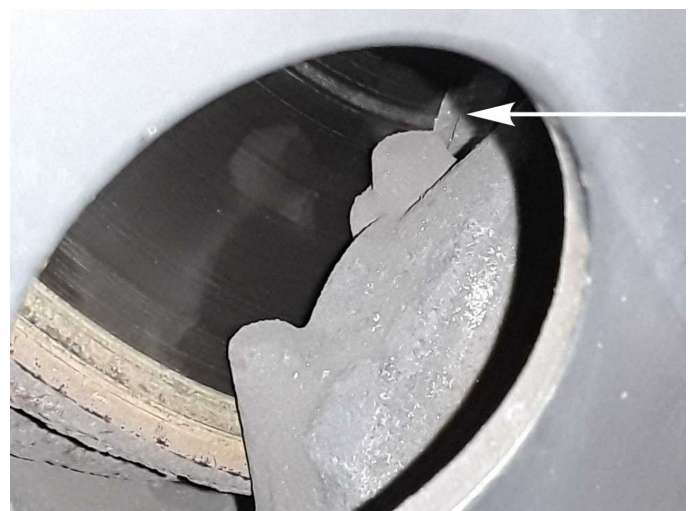
Damage 6: Braking system: Brake discs and pads - rear - Corrosion - Replace



Damage 6: Braking system: Brake discs and pads - rear - Corrosion - Replace



Damage 6: Braking system: Brake discs and pads - rear - Corrosion - Replace



Damage 7: Braking system: Brake discs and brake pads - front (Korrosion und) - Worn - Replace



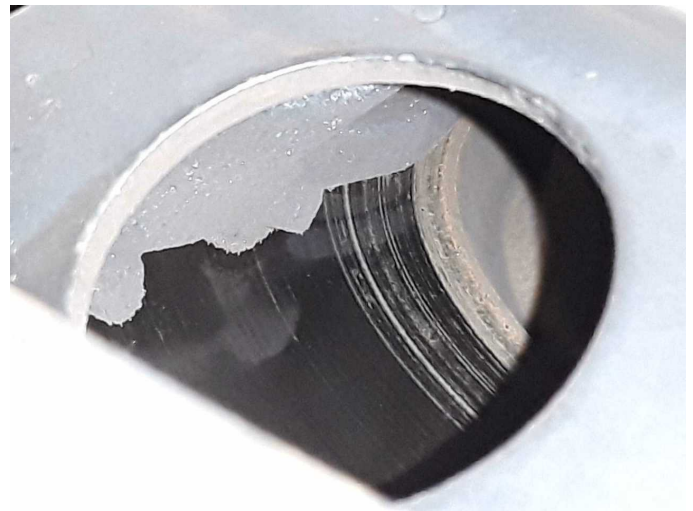
Damage 7: Braking system: Brake discs and brake pads - front (Korrosion und) - Worn - Replace



Damage 7: Braking system: Brake discs and brake pads - front (Korrosion und) - Worn - Replace



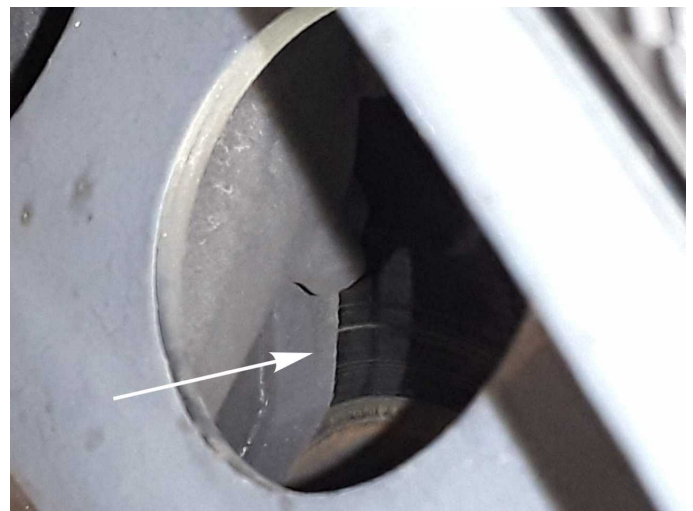
Damage 7: Braking system: Brake discs and brake pads - front (Korrosion und) - Worn - Replace



Damage 7: Braking system: Brake discs and brake pads - front (Korrosion und) - Worn - Replace



Damage 7: Braking system: Brake discs and brake pads - front (Korrosion und) - Worn - Replace



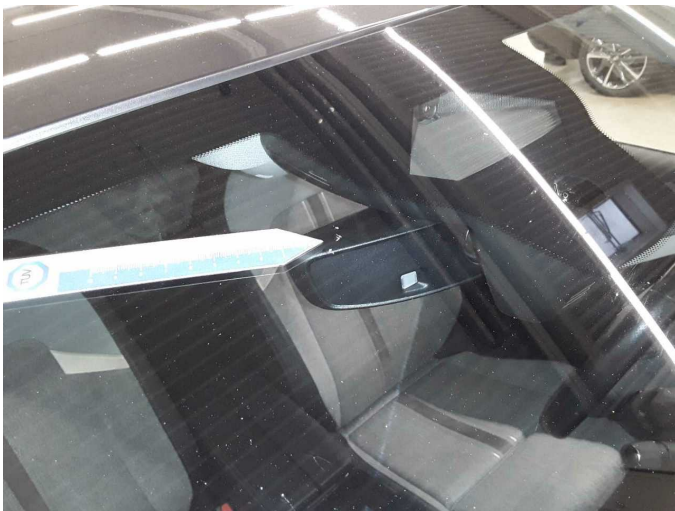
Damage 7: Braking system: Brake discs and brake pads - front (Korrosion und) - Worn - Replace



Damage 8: Vehicle glazing: Windscreen - Stone chips - Replace



Damage 8: Vehicle glazing: Windscreen - Stone chips - Replace



Damage 8: Vehicle glazing: Windscreen - Stone chips - Replace



Damage 8: Vehicle glazing: Windscreen - Stone chips - Replace



Wear and tear 2: 2nd wheel set: 1 alloy rim - Scratch(es) - No deduction



Wear and tear 2: 2nd wheel set: 1 alloy rim - Scratch(es) - No deduction



Wartungshistorie

(gemäß Auftraggeber Informationen)

Fahrgestellnummer: VVKFBYHZTP1029790

Hersteller / Modell: OPEL OPEL Astra 1.5 D Automatik Business Elegance

Datum	KM-Stand	Beschreibung
22.12.2025	132.248	Keilrippenriemen; Kraftstofffilter ern; Luftfiltereinsatz ern; Motoröl b. Wartung; Ölfilter ern; Regelwartungsdienst; Wartung Sonstiges
03.07.2025	105.749	Bremsflüssigkeit; Bremsflüssigkeit ern; Motoröl b. Wartung; Ölfilter ern; Regelwartungsdienst; Systemtest/Eigendiagnose; Wartung Sonstiges
18.01.2025	77.913	Motoröl b. Wartung; Ölfilter ern; Regelwartungsdienst; Wartung Sonstiges
09.11.2024	69.693	Bremsklötze vorne
11.07.2024	53.081	Kraftstofffilter ern; Luftfiltereinsatz ern; Motoröl b. Wartung; Ölfilter ern; Regelwartungsdienst; Wartung Sonstiges
11.01.2024	26.223	Motoröl b. Wartung; Ölfilter ern; Regelwartungsdienst; Wartung Sonstiges