

Expertise

Protocol number: 45530743
Order No. / Reference: 26277009
Inspection date: 7 May 2026

Manufacturer: Ford

Model: Focus Turnier 1.5 EcoBlue Start-Stopp-System Aut. TITANIUM
STYLE

VIN: WF0PXXGCHPNT51419



Vehicle details

Manufacturer / Type / Model / Equipment

Ford Focus Turnier 1.5 EcoBlue Start-Stopp-System Aut. TITANIUM
STYLE

Vehicle Identification number	WF0PXXGCHPNT51419
Mileage (Read)	142,890 km
First registration	27 Dec 2022
Number of holders	1
Next periodical technical inspection	12/2027
(Report on hand)	

Power / Engine displacement	88 kw / 1,499 ccm
------------------------------------	-------------------

Fuel type / Cylinder	Diesel / 4
-----------------------------	------------

Gearbox / Number of gears	Automatic / 8
----------------------------------	---------------

Type of drive	Front drive
----------------------	-------------

Type of vehicle	Station wagon
------------------------	---------------

Colour / colour code	Moondust Silver Metallic
-----------------------------	--------------------------

Doors / Seats	5 / 5
----------------------	-------

Upholstery type	Cloth
------------------------	-------

Colour of upholstery	Anthracite
-----------------------------	------------

Vehicle with smoke odor	no
--------------------------------	----



Vehicle details			
Maintenance booklet / proof	digital proof / complete	Next maintenance in	142,890 km
Last service on / at	03/2026 at 141,635 km		
Key is / should be	2 / 2	FZG documents	ZB#2 (B) was available (copy), ZB#1 (S) was not available.
		Letter No.	GP492704
Previous damage / Accident	None detectable	Repainting	Detectable
Inspection conditions	sufficient	Lifting equipment / pit	yes
Test drive	Not performed	Engine function test	Performed
Manufacturer key number/ type code number	8566 / BPV 00636		
Emission standard	EURO6;WLTP;AP;PI/CI; M, N1 I	fine dust sticker	
Permitted total weight	2,035 kg	Empty weight	

Tyres

Mounted tyres				
#	Tyre size	Type of tyre	Manufacturer	Tread depth
1)	205/60 R16 92V	Summer tyres on Steel rim with wheel cover	Goodyear	6mm / 6mm
2)	205/60 R16 92V	Summer tyres on Steel rim with wheel cover	Goodyear	6mm / 6mm
Replacement				
Typ	Tyre size	Type of tyre	Manufacturer	Tread depth
	Tirefit	Expiration date 05/2026		

Legend: Tread depth information for the left tire is listed first, for the right tire it is listed second on the axle in the direction of travel.

TÜV SÜD Auto Partner GmbH
Wiesenring 2
04159 Leipzig

Inspection location
Mosolf SE & Co.KG
Faberweg 25
73230 Kirchheim unter Teck



Equipment



Standard equipment

- Airbag: Passenger airbag deactivation
- Anti-lock braking system (ABS) with electronic brake force distribution (EBD)
- Tires: 6.5 J x 16 design wheels (4) with 205/60 R16 tires (in 10-spoke design, in black-silver)
- Fabric headliner
- Roof spoiler painted in car color
- Tachometer
- Electronic shifter - rotary switch for automatic transmissions
- Driver information system with on-board computer, color (10.7 cm screen diagonal)
- Electric parking brake with auto-hold function
- Ford Easy Fuel (comfortable fuel filler cap and misfuelling protection)
- Ford Power Start function (with Ford Key Free system - keyless locking/unlocking)
- Speed limiter (Intelligent speed limiter with speed limit display)
- Illuminated glove compartment
- rear window wiper
- Interior mirror automatically dimming
- Intelligent safety system (front airbag for driver and front passenger - front and rear head and shoulder airbags - side airbag for driver and front passenger - seat belt tensioners and force limiters in the front and on the outer seats of the 2nd row - 3-point seat belts on all seats, height-adjustable in the front - safety pedal assembly)
- Radiator grille in titanium design
- LED headlights (LED low beam - LED high beam - LED daytime running lights incl. integrated LED turn signals at the front - LED cornering lights, static, incl. integrated LED fog light function and maneuvering light)
- Make-up mirrors in driver and passenger sun visors
- MyKey key system (individually programmable second key)
- Navigation: Ford SYNC 3 with AppLink, 8" touchscreen and DAB/DAB+ (Ford navigation system with AppLink, 8" touchscreen (20.3 cm screen diagonal) - 6 speakers - Android Auto and Apple CarPlay - Bluetooth hands-free system and audio streaming - Steering wheel controls - Radio player - USB port - Voice control via audio and telephone - Acoustic and visual route guidance, dynamic navigation with enhanced traffic information system, lane guidance and road map for Europe)
- Pre-Collision Assist (Forward Alert system with pedestrian and bicycle detection)
- Tire repair kit (for use at a maximum speed of 80 km/h)
- Tire Pressure Monitoring System (TPMS)
- paddle shifters on the steering wheel
- Headlight dipped beam (with switch-off delay)
- Selective driving mode switch (including 3 selectable driving modes: Normal, Sport and Eco)
- Seats: Passenger seat height adjustment, manual (with adjustable lumbar support)
- Seats: Driver's seat manually height-adjustable
- Ambient lighting, front
- Electrically folding exterior mirrors
- Attachment points behind the second row of seats for mounting the safety partition net
- Hill start assist
- Roof rails, aluminum
- Diesel particulate filter (DPF)
- Third brake light
- Electronic Stability Program (ESP) (with Emergency Brake Assist (EBA) and Traction Control System (TCS))
- Lane keeping assist including lane keeping assist
- Electric front and rear windows (with all-around closing function)
- Ford EcoCoach (efficiency indicator for environmentally friendly driving style)
- FordPass Connect including eCall and Wi-Fi hotspot
- luggage compartment cover
- Cruise control
- Transmission: 8-speed automatic transmission
- Back window, heater
- Interior lighting with LED technology (front and rear and map reading lights at the front)
- Isofix mounting (including top tether attachment points on the outer seats of the 2nd row)
- Air conditioning with automatic temperature control (separately adjustable for driver and passenger side (2-zone automatic climate control))
- Headrests (5) (height adjustable, rear ones retractable)
- LED taillights
- Steering wheel: 3-spoke design steering wheel (in Sensico leather look)
- Steering wheel: Steering column, adjustable in height and reach
- Front center console "Premium" (sliding armrest - cup holders - storage compartments - 12-volt and USB connection)
- Emergency brake light (pulsating illumination of the brake lights during hard braking)
- Front and rear parking pilot system
- Upholstery: Cloth
- Post-Collision Assist (In the event of a severe collision, which would also deploy the airbag and in which the driver might be incapacitated, this system initiates the braking process. This reduces the risk of colliding with further obstacles and road users after the initial collision. The driver can intervene and operate the accelerator or brake pedal manually throughout the entire process.)
- Rear seat backrest, foldable, 60:40 split
- Windscreen wipers with rain sensor (sensitivity adjustable)
- Headlight assistant with day/night sensor
- Electro-mechanical speed-dependent power steering (EPAS - Electric Power Assisted Steering)
- Seats: Driver and front passenger seat backrests with map mesh
- Seats: Driver's seat with adjustable lumbar support



- Seats: Front sports seats (with enhanced lateral support)
- 12-volt power outlet in the luggage compartment
- Variable radiator air intake
- Warning system for unfastened seat belts for the 1st and 2nd rows of seats

- Start-stop system
- Carpet floor mats in the front
- Lashing eyes in the luggage compartment
- Immobiliser
- Central locking with remote control and remote luggage compartment release

Extra equipment

- Delivery package
- SIG loading sill protection strip
- Safety partition net for luggage compartment
- Paint finish: Metallic
- Package: Winter (heated windscreen - heated steering wheel - individually and variably heated front seats)

Brief expert findings

Documents submitted	At the time of the inspection, the vehicle registration certificate Part 2 (title) was available, but the vehicle registration certificate Part 1 (document) was not. (Copy)
VIN comparison	The vehicle identification number (VIN) was read from the vehicle and its conformity with the submitted documents was confirmed by the undersigned during the inspection.
Inspection	The inspection conditions were sufficient for the assessment of the vehicle. Lifting equipment and/or a pit were available for examining the vehicle.
Test drive	No test drive/shunting maneuver was carried out during the inspection of the vehicle.
Engine function test	An engine test run was performed.

Value reducing factors

No.	Component group	Description
1	Engine	Engine cover - Damage caused by marten / rodent - Replace
2	Side panel - rear right side	Sill - Scratch(es) - Smart repair
3	Boot lid / rear door	Boot lid - dent(s) - Smart repair

Wear and tear

No.	Component group	Description
1	Steering system	Steering wheel - Abrasion - No deduction
2	Sill - right side	Sill - Scratch(es) - No deduction
3	Front bumper	Front bumper - Stone chips - No deduction

The vehicle shows signs of wear and tear commensurate with its age and use.

Repainting

No.	Repainting
1	Mudguard - left side, Side panel - rear right side, Door - rear right side, Professionally carried out, Invoice of repair done Non-existent

Paint coat thickness measurement

Mudguard - left side	202 µm	Side panel - rear right side	180 µm
Door - rear right side	199 µm		



Order/Scope of Order

An order was placed to prepare a sales report for the described vehicle. This report includes the following:

- Description of key vehicle information
- Documentation of equipment features
(Delivery by third-party service providers)
- Documentation of damage, defects, missing parts
- Documentation of prior damage, unrepaired prior damage, repainting
- A brief visual or functional inspection of the equipment details, if possible.
(Functional testing of driver assistance systems is not included in the scope of services!)
- a photographic documentation of the vehicle

Basis for the order

This product is based on the guidelines for vehicle returns and valuations published by Alphabet Fleet GmbH. The expert makes the specific findings in each individual case objectively, within the framework of the prescribed standards, based on their own expertise.

The vehicle inspection takes place in a fully assembled, unassembled state.

Damage or defects that can only be detected during disassembly/diagnostic work or through further investigation remain within the realm of prognostic risk. An increased risk exists due to concealed defects caused by fraudulent misrepresentation and which were not identifiable by the expert.

Damage or defects resulting from normal use or wear and tear of the vehicle will be accepted in accordance with the applicable standard.

There was no explicit identification or monetary consideration of the expected features within the product.

Features which, in their nature and extent, slightly exceed normal use but do not constitute unacceptable damage, will be documented and indicated as signs of wear, if applicable.

Damage or defects that, according to the applicable standard, can no longer be attributed to normal use or wear and tear are listed under "Value Reducing Factors" in the product description.

Depending on the product specification, a monetary ID can be provided. If this takes place, the costs can be 100% d or pro rata depending on the vehicle's age and mileage.

Previous damages

No apparent prior damage that had been repaired could be found on the vehicle.

Comments

Marder Spuren sind im Motorraum, weitere Schäden sind möglich.



Figure 1: Diagonal front (left)



Figure 2: Diagonal front (right)



Figure 3: Diagonal rear (left)



Figure 4: Diagonal rear (right)

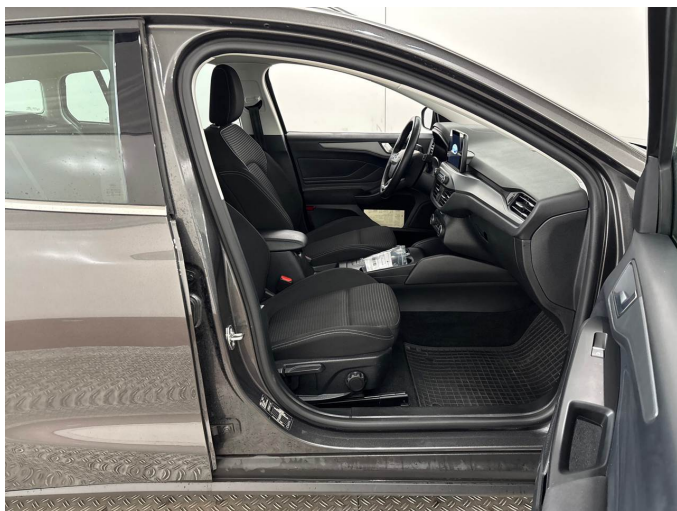


Figure 5: Interior - front



Figure 6: Interior - rear



Figure 7: Instrument cluster



Figure 8: Instrument panel



Figure 9: Interior 360° view



Figure 10: Cargo area



Figure 11: VIN



Figure 12: Mounted tyres



Figure 13: Documents



Figure 14: Documents

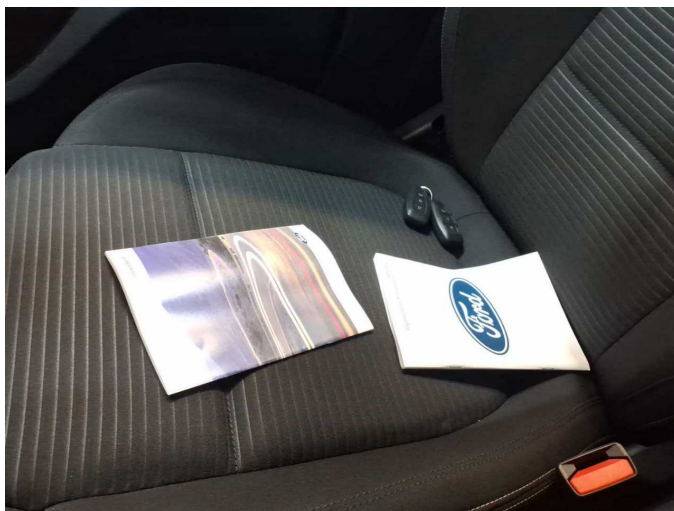


Figure 15: Documents



Figure 16: Navigation



Figure 17: Misc.



Figure 18: Misc.



Figure 19: Misc.



Figure 20: Misc.



Figure 21: Misc.



Figure 22: Misc.

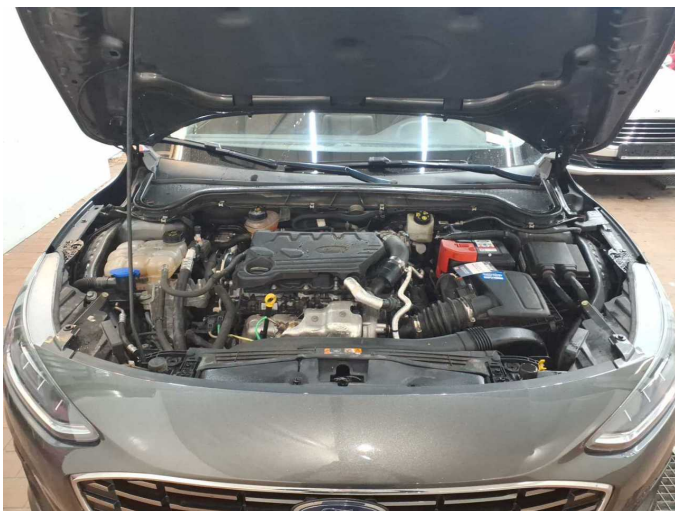


Figure 23: Misc.



Figure 24: Misc.



Figure 25: Misc.



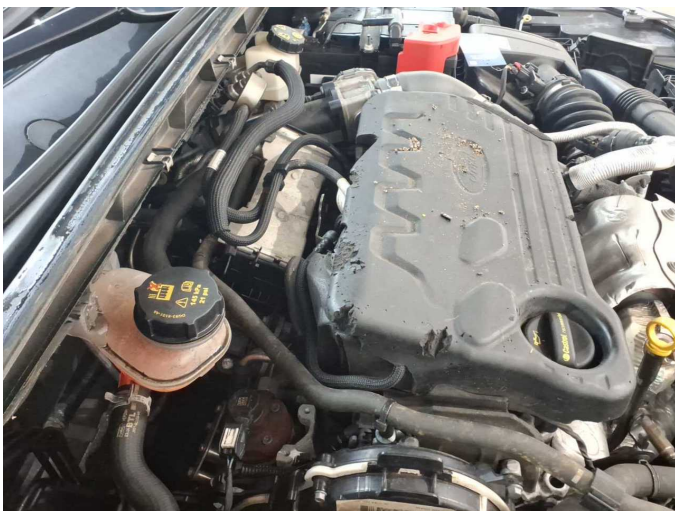
Figure 26: Misc.



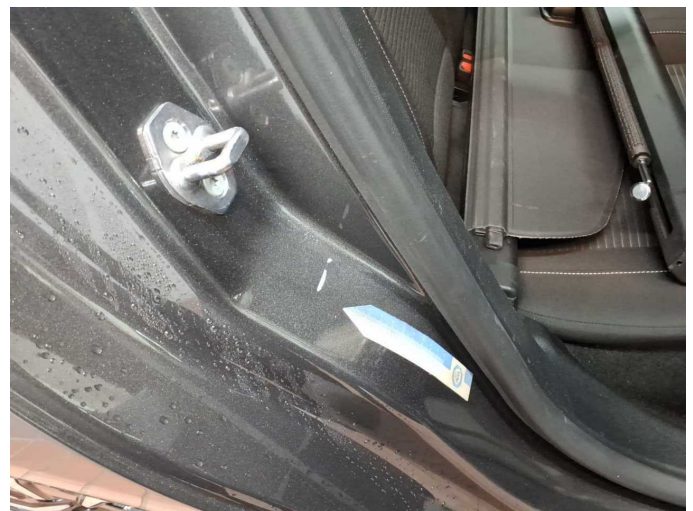
Figure 27: Misc.



Damage 1: Engine: Engine cover - Damage caused by marten / rodent - Replace



Damage 1: Engine: Engine cover - Damage caused by marten / rodent - Replace



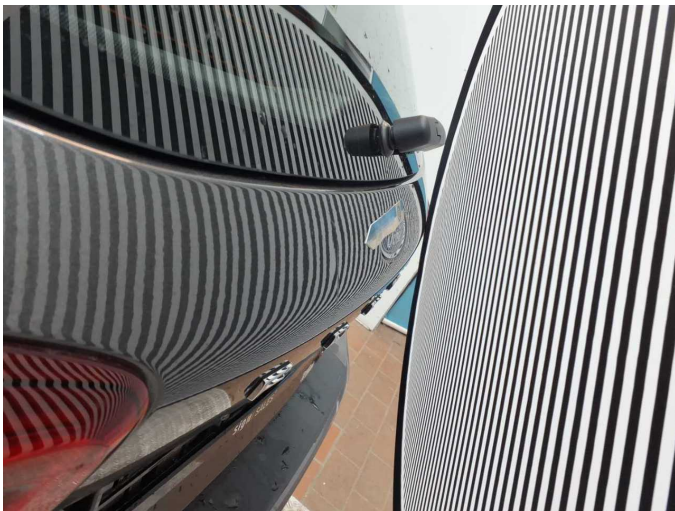
Damage 2: Side panel - rear right side: Sill - Scratch(es) - Smart repair



Damage 2: Side panel - rear right side: Sill - Scratch(es) - Smart repair



Damage 3: Boot lid / rear door: Boot lid - dent(s) - Smart repair



Damage 3: Boot lid / rear door: Boot lid - dent(s) - Smart repair



Repainting 1: Mudguard - left side, Side panel - rear right side, Door - rear right side



Repainting 1: Mudguard - left side, Side panel - rear right side, Door - rear right side



Repainting 1: Mudguard - left side, Side panel - rear right side, Door - rear right side



Repainting 1: Mudguard - left side, Side panel - rear right side, Door - rear right side



Repainting 1: Mudguard - left side, Side panel - rear right side, Door - rear right side



Repainting 1: Mudguard - left side, Side panel - rear right side, Door - rear right side



Wartungshistorie

(gemäß Auftraggeber Informationen)

Fahrgestellnummer: WF0PXXGCHPNT51419
Hersteller / Modell: FORD FORD Focus Turnier 1.5 EcoBlue Start-Stopp-System Aut.
TITANIUM STYLE

Datum	KM-Stand	Beschreibung
20.03.2026	141.635	Ladeluftschlauch ern; Motoröl b. Wartung; Ölfilter ern; Regelwartungsdienst; Wartung Sonstiges
16.03.2026	140.470	Batterie ern; Systemtest/Eigendiagnose
09.12.2025	132.238	AU; Bremse Sonstiges; Bremsklötze hinten; Bremsscheiben + Klötze h; Bremsscheiben hinten; Reparatur Sonstiges; Wasserpumpe ern
02.08.2025	115.836	Kraftstofffilter ern; Luftfiltereinsatz ern; Motoröl b. Wartung; Ölfilter ern; Regelwartungsdienst; Wartung Sonstiges
20.01.2025	92.824	Systemtest/Eigendiagnose
06.12.2024	87.458	Bremsflüssigkeit; Bremsflüssigkeit ern; Bremsklötze vorne; Motoröl b. Wartung; Ölfilter ern; Regelwartungsdienst; Wartung Sonstiges
17.04.2024	57.111	Kraftstofffilter ern; Luftfiltereinsatz ern; Motoröl b. Wartung; Ölfilter ern; Regelwartungsdienst; Wartung Sonstiges
22.08.2023	28.871	Motoröl b. Wartung; Ölfilter ern; Regelwartungsdienst; Wartung Sonstiges