

## Expertise

Protocol number: 46318992  
Order No. / Reference: 26577580  
Inspection date: 3 Jul 2026

Manufacturer: Mercedes-Benz

Model: EQA 250 Progressive

VIN: W1N9N0BB2PJ074072



### Vehicle details

#### Manufacturer / Type / Model / Equipment

Mercedes-Benz EQA 250 Progressive

**Vehicle Identification number** W1N9N0BB2PJ074072

**Mileage (Read)** 32,053 km

**First registration** 8 May 2023

**Number of holders** 1

**Next periodical technical inspection** 05/2026  
(Report not on hand)

**Power / Engine displacement** 111 kw /

**Fuel type / Cylinder** Electric / 0

**Gearbox / Number of gears** Direct drive / 1

**Type of drive** Front drive

**Type of vehicle** SUV

**Colour / colour code** Digitalweiß Metallic

**Doors / Seats** 5 / 5

**Upholstery type** Leather

**Colour of upholstery** Black



## Vehicle details

<b>Maintenance booklet / proof</b>	digital proof / complete	<b>Next maintenance in</b>	0 km
<b>Last service on / at</b>	06/2025 at 18,096 km		
<b>Key is / should be</b>	2 / 2	<b>FZG documents</b>	ZB#2 (B) was available (copy), ZB#1 (S) was not available.
		<b>Letter No.</b>	GS720308
<b>Previous damage / Accident</b>	None detectable	<b>Repainting</b>	None detectable
<b>Inspection conditions</b>	sufficient	<b>Lifting equipment / pit</b>	yes
<b>Test drive</b>	Not performed	<b>Engine function test</b>	Performed
<b>Manufacturer key number/ type code number</b>	2222 / BJW 00007		
<b>Emission standard</b>	2017/1151;WLTP;reine Elektrofz	<b>fine dust sticker</b>	
<b>Permitted total weight</b>	2,470 kg	<b>Empty weight</b>	

## Tyres

### Mounted tyres

#	Tyre size	Type of tyre	Manufacturer	Tread depth
1)	235/50 R19 103T	Summer tyres on Light alloy	Continental	4mm / 4mm
2)	235/50 R19 103T	Summer tyres on Light alloy	Continental	4mm / 4mm

### Replacement

Typ	Tyre size	Type of tyre	Manufacturer	Tread depth
Tirefit		Expiration date 06/2028		

**Legend: Tread depth information for the left tire is listed first, for the right tire it is listed second on the axle in the direction of travel.**



## Equipment

### Standard equipment

- Storage compartment in center console with roller blind
- Airbag for driver and front passenger
- Airbag: Side airbag for driver and front passenger
- Active Brake Assist
- Acoustic environmental protection
- Anti-lock braking system (ABS)
- ATTENTION ASSIST
- outdoor thermometer
- Roof rails in polished aluminum
- Third brake light in LED technology
- EASY-Pack tailgate with electric operation for opening and closing
- Velour floor mats in black
- Speed Limit Assistant
- rear window wiper
- Climate: THERMATIC automatic climate control
- Headrests (5)
- Charging cable for wallboxes and public charging stations, 5m, smooth
- Charging system: Alternating current charging system (AC charging) up to 11 kW (3-phase)
- Mercedes-Benz emergency call system
- Navigation accessories: Pre-installation for Live Traffic Information
- Navigation: Hard disk navigation
- Package: Light and Visibility Package
- Radio: MBUX multimedia system
- Radio accessories: Touchpad
- Remote and Charging Services Premium
- Windscreen wipers with rain sensor
- Seats: Comfort seats
- Power outlet: 12V socket in the luggage compartment
- TIREFIT with tire inflation compressor
- Immobiliser
- Decorative elements spiral look
- Adaptive Highbeam Assist
- Airbag: Kneebag for driver
- Airbag: Windowbags
- Active Lane Keeping Assist
- Ambient lighting
- Rear armrest
- Electrically adjustable exterior mirrors
- Color glass
- Double cup holder
- DYNAMIC SELECT
- Chassis: Comfort chassis with lowered suspension
- Electric windows, front and rear
- Luggage net on driver and passenger seatbacks
- Transmission: Direct drive
- Black fabric headliner
- Communication module (LTE) for the use of Mercedes me connect services
- Chrome-look loading sill protector
- Charging system: Direct current charging system (DC charging)
- LED High Performance Headlights
- Navigation accessories: Extended MBUX functions
- Navigation accessories: Pre-installation for remote and navigation services
- Package: Cargo space
- Package: Seating comfort
- Radio accessories: Digital radio
- Tire pressure monitoring system
- Rear view camera
- Seats: 4-way lumbar support for driver and front passenger
- Seats: Rear seat backrests foldable
- Cruise control
- High-visibility vest for drivers
- Central locking



### Extra equipment

- Towbar with ESP trailer stabilization
- Chassis: Comfort chassis
- Steering wheel: Steering wheel heating
- Package: Advanced Plus (Fully digital instrument display, high resolution 10.25" - CENTRAL MEDIA DISPLAY 10.25" - Mirror package: interior and exterior mirrors automatically dimming, exterior mirrors electrically folding, ambient lighting for the exterior mirrors to illuminate the entry area - Parking package with reversing camera - Active Park Assist with PARKTRONIC - THERMOTRONIC automatic climate control - KEYLESS-GO Comfort package: KEYLESS-GO function, EASY-PACK tailgate - Wireless charging system for mobile devices in the front - Advanced sound system - 10 speakers, 225 W, Blind Spot Assist)
- Wheels: 48.3 cm (19") alloy wheels, 4-spoke design (aerodynamically optimized, painted black with energy blue decorative elements and polished finish with 235/50 R 19 tires on 7.5 J x 19 ET 53.5)
- Heated seats for driver and front passenger
- Blind spot assist (visual and acoustic warning system)
- Traffic Sign Assist (driver assistance system for recognizing speed limits, entry and overtaking prohibitions, and their cancellation; detection of traffic signs via multifunction camera and display in the instrument cluster in real time and comparison with navigation data; helps the driver to comply with traffic regulations, increases driving safety; wrong-way driving warning function: with corresponding signage, visual and acoustic warning signal when entering a road against the prescribed direction of travel)
- Exit warning function
- Paint finish: Metallic
- Steering wheel: Multifunction sports steering wheel in Nappa leather (The multifunction sports steering wheel in Nappa leather with black control panels will delight you with every glance and every touch. The soft Nappa leather is of exquisite quality. The steering wheel thus conveys a passion for high-quality automotive details at all times.)
- Package: Business Package
- Package: Connectivity Package Navigation (Hard drive navigation - pre-installation for navigation services)
- Upholstery: ARTICO black leatherette
- Radio accessories: Advanced sound system (with 10 speakers and 225 watts system power)
- Sunroof: Panoramic sunroof (electrically operated in glass design with comfort and automatic rain closing - electric sunshade - anti-pinch protection and PRE-SAFE closing function)
- Smartphone integration (consisting of Apple CarPlay and Android Auto)
- Pre-installation for digital key handover (Share your vehicle with friends and family members more easily than ever before – no matter where you are. You retain full control and decide conveniently via app whether you consent to its use. You can also unlock your vehicle remotely via the mobile application. Only then will a stored key be activated. Service is free of charge for 3 years from activation.)
- Heat-insulating dark tinted glass (all around from the B-pillar)

### Brief expert findings

Documents submitted	At the time of the inspection, the vehicle registration certificate Part 2 (title) was available, but the vehicle registration certificate Part 1 (document) was not. (Copy)
VIN comparison	The vehicle identification number (VIN) was read from the vehicle and its conformity with the submitted documents was confirmed by the undersigned during the inspection.
Inspection	The inspection conditions were sufficient for the assessment of the vehicle. Lifting equipment and/or a pit were available for examining the vehicle.
Test drive	No test drive/shunting maneuver was carried out during the inspection of the vehicle.
Engine function test	An engine test run was performed.

### Value reducing factors

No.	Component group	Description
1	Boot lid / rear door	Boot lid - dent(s) - Smooth repair work
2	Misc.	Inspection / maintenance - Due - Perform

### Wear and tear

No.	Component group	Description
1	Front bumper	Front bumper - Stone chips - No deduction
2	Vehicle glazing	Windscreen - Stone chips - No deduction

The vehicle shows signs of wear and tear commensurate with its age and use.



## Order/Scope of Order

An order was placed to prepare a sales report for the described vehicle. This report includes the following:

- Description of key vehicle information
- Documentation of equipment features  
*(Delivery by third-party service providers)*
- Documentation of damage, defects, missing parts
- Documentation of prior damage, unrepaired prior damage, repainting
- A brief visual or functional inspection of the equipment details, if possible.  
*(Functional testing of driver assistance systems is not included in the scope of services!)*
- a photographic documentation of the vehicle

## Basis for the order

This product is based on the guidelines for vehicle returns and valuations published by Alphabet Fleet GmbH. The expert makes the specific findings in each individual case objectively, within the framework of the prescribed standards, based on their own expertise.

The vehicle inspection takes place in a fully assembled, unassembled state.

Damage or defects that can only be detected during disassembly/diagnostic work or through further investigation remain within the realm of prognostic risk. An increased risk exists due to concealed defects caused by fraudulent misrepresentation and which were not identifiable by the expert.

Damage or defects resulting from normal use or wear and tear of the vehicle will be accepted in accordance with the applicable standard.

There was no explicit identification or monetary consideration of the expected features within the product.

Features which, in their nature and extent, slightly exceed normal use but do not constitute unacceptable damage, will be documented and indicated as signs of wear, if applicable.

Damage or defects that, according to the applicable standard, can no longer be attributed to normal use or wear and tear are listed under "Value Reducing Factors" in the product description.

Depending on the product specification, a monetary ID can be provided. If this takes place, the costs can be 100% or pro rata depending on the vehicle's age and mileage.

## Previous damages

No apparent prior damage that had been repaired could be found on the vehicle.

## Comments

Wartungshistorie gemäß Auftraggeber Informationen.



Figure 1: Diagonal front (left)



Figure 2: Diagonal front (right)



Figure 3: Diagonal rear (left)



Figure 4: Diagonal rear (right)

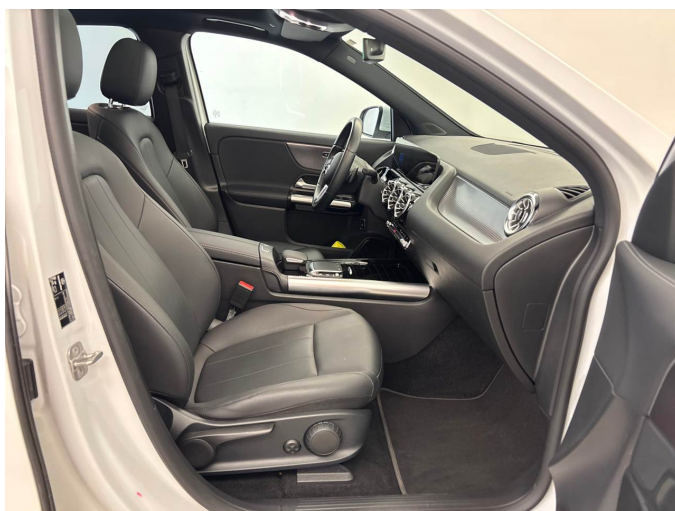


Figure 5: Interior - front



Figure 6: Interior - rear



Figure 7: Instrument cluster



Figure 8: Instrument panel



Figure 9: Interior 360° view



Figure 10: Cargo area



Figure 11: VIN



Figure 12: Mounted tyres



Figure 13: Documents



Figure 14: Navigation



Figure 15: Misc.



Figure 16: Misc.



Figure 17: Misc.

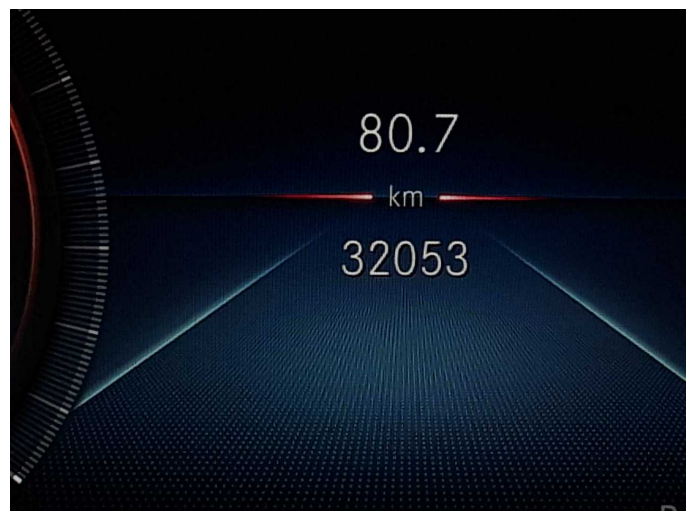


Figure 18: Misc.



Figure 19: Misc.



Figure 20: Misc.

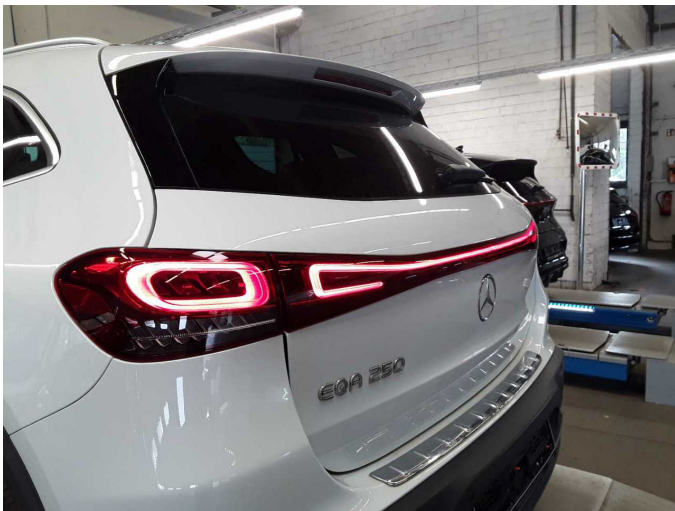


Figure 21: Misc.



Figure 22: Misc.



Figure 23: Misc.



Figure 24: Misc.



Figure 25: Misc.



Figure 26: Misc.



Figure 27: Misc.



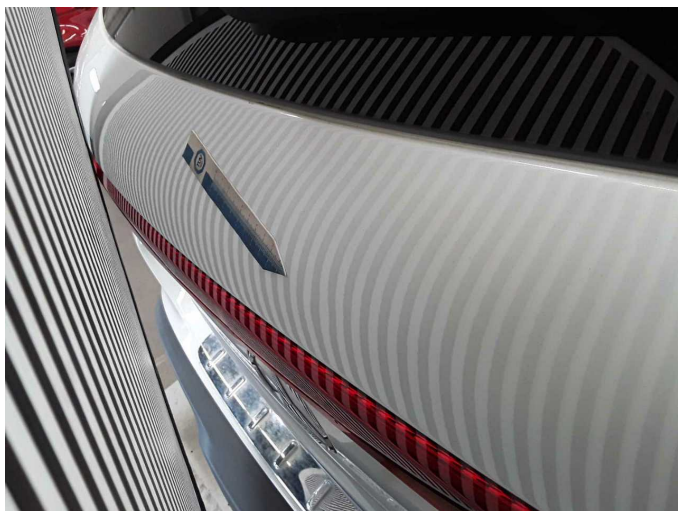
Figure 28: Misc.



Figure 29: Misc.



Damage 1: Boot lid / rear door: Boot lid - dent(s) - Smooth repair work



**Damage 1:** Boot lid / rear door: Boot lid - dent(s) - Smooth repair work



**Damage 2:** Misc.: Inspection / maintenance - Due - Perform



# Wartungshistorie

(gemäß Auftraggeber Informationen)

Fahrgestellnummer: W1N9N0BB2PJ074072

Hersteller / Modell: MERCEDES-BENZ MERCEDES-BENZ EQA 250 Progressive

Datum	KM-Stand	Beschreibung
16.06.2025	18.096	Regelwartungsdienst
17.04.2024	7.440	Regelwartungsdienst