

Expertise

Protocol number: 45802676
Order No. / Reference: 26153469
Inspection date: 2 Jun 2026

Manufacturer: Mercedes-Benz

Model: 319 CDI Sprinter 4x4 Standard 9G-TRONIC PRO

VIN: W1V3MBTZ7TP848968



Vehicle details

Manufacturer / Type / Model / Equipment

Mercedes-Benz 319 CDI Sprinter 4x4 Standard 9G-TRONIC PRO

Vehicle Identification number W1V3MBTZ7TP848968

Mileage (Read) 9,512 km

First registration 28 Jul 2025

Number of holders 1

Next periodical technical inspection 07/2026

(Report not on hand)

Power / Engine displacement 140 kw / 1,950 ccm

Fuel type / Cylinder Diesel / 4

Gearbox / Number of gears Automatic / 9

Type of drive All-wheel drive

Type of vehicle Van

Colour / colour code TENORITGRAU

Doors / Seats 4 / 3

Upholstery type Cloth

Colour of upholstery Black-Anthracite

Re-import no

Type of use rental car

readiness to drive Roadworthy



Vehicle details

Maintenance booklet / proof	Non-existent	Next maintenance in	399 Tag(e)
Key is / should be	1 / 2	FZG documents	ZB#2 (B) was available (copy), ZB#1 (S) was not available.
		Letter No.	HN435279
Previous damage / Accident	None detectable	Repainting	None detectable
Inspection conditions	sufficient	Lifting equipment / pit	yes
Test drive	Not performed	Engine function test	Performed
readiness to drive	Roadworthy		
Manufacturer key number/ type code number	2222 / BFK 01915		
Emission standard	EUROVI; E; M, N	fine dust sticker	
Permitted total weight	3,500 kg	Empty weight	

Tyres

Mounted tyres

#	Tyre size	Type of tyre	Manufacturer	Tread depth
1)	225/75 R16 120R	Winter tyres on Steel rim with wheel cover	Continental	8mm / 8mm
2)	225/75 R16 120R	Winter tyres on Steel rim with wheel cover	Continental	9mm / 9mm

Legend: Tread depth information for the left tire is listed first, for the right tire it is listed second on the axle in the direction of travel.

TÜV SÜD Auto Partner GmbH
Wiesenring 2
04159 Leipzig

Inspection location
ARS Altmann AG Automobillogistik
Lilienthalstraße 2
29693 Hodenhagen



Equipment



Standard equipment

- Storage compartment above windshield
- Rear towing eye
- ADAPTIVE ESP (latest generation) with load- and speed-dependent driving dynamics control
- Active Lane Keeping Assist
- ATTENTION ASSIST
- Electrically folding exterior mirrors
- Outdoor temperature display
- Hill start assist
- Front side indicator lights
- third brake light
- COC documents
- Ceiling light in the cargo/passenger compartment
- Digital operating instructions
- Entry handle on rear right corner pillar
- Driving light assistant
- Electric window regulator for driver and passenger door
- Noise measures
- Seatbelt warning device for front passenger seat
- Grab handle for entry to the cargo area sliding door on the partition wall
- Rear lights with partial LED technology
- Intelligent speed assistant
- Tempmatic controlled air conditioning
- Headrests (2), front
- Cable duct at rear portal
- Steering wheel adjustable for tilt and height
- Headlight range control
- Marker lights, side
- Navigation: Navigation pre-installation
- Package: Acoustics
- Upholstery: Cloth
- Radio: MBUX multimedia system
- Rain sensor
- Tires: Tires without specified make
- Tire pressure monitoring
- Wheels: Premium complete wheel protection
- Rear view camera
- Sliding door on the right, cargo/passenger compartment
- Power steering
- Seats: Driver's seat
- Jump-start contact
- Speedometer km/h
- Blind Spot Assist
- First aid kit
- Pre-installation for Remote Services Plus
- Immobiliser
- Parking light removed
- Central locking with radio remote control
- Storage compartment under cockpit
- Axle ratio $i = 3.923$
- Passenger side airbag
- Driver's side airbag
- 4x4 all-wheel drive with torque-on-demand
- Electrically adjustable and heated exterior mirrors, left and right
- Battery: fleece battery 12 V / 92 Ah
- Reference mass of at least 2381 kg is necessary
- Brake assist, active
- Brake lights, adaptive
- Roof: High roof
- Diesel particulate filter and SCR
- Tachometer
- Electrical components for trailer socket
- HVO-capable vehicle
- Generator 14 V / 250 A
- Transmission: 9G-TRONIC
- Seatbelt warning device for driver's seat
- Grab handle for entry of driver and passenger
- Main tank 93 liters
- HOLD function
- Clothes hooks in the driver's cab
- Instrument cluster with color display
- Paint finish: Solid color paint
- Cable duct on side wall
- Steering wheel: Multifunction steering wheel
- Longitudinal beam reinforcement
- Mercedes-Benz emergency call system
- Without weight increase/decrease: 3,500 kg
- Breakdown management
- Radio: Digital Radio DAB
- Radio accessories: Communication module (LTE) for digital services
- Tires: Summer tires
- Wheels: Tires 225/75 R16 C
- Wheels: Steel rims 6.5 J x 16
- Reversing light under bumper corner
- Crosswind Assist
- Seats: Passenger seat, two-seater
- Start-stop function
- USB 5V socket
- Cruise control
- continuous partition wall
- Lashing eyes
- Warning triangle
- Elimination of ECO start/stop function
- Heat-insulating glass with band filter on the windshield
- Registration certificate, Part II



Extra equipment

- Storage for smartphones including wireless charging
- 13-pin trailer socket in conjunction with a 14V/250A generator
- Double passenger seat
- Interior lining of cargo area up to roof height, washable
- Paintwork: Special paintwork
- LED High Performance Headlights
- LED light strip in the cargo area
- Package: Winter package in conjunction with passenger seat, two-seater (WET WIPER SYSTEM - heated passenger seat - heated driver seat)
- Tires: M+S tires
- Tires: Tire brand, special request
- Seats: Driver's seat box, low
- Phone: Smartphone integration package
- Towbar (for increased towing capacity 2.8 t / 3.0 t)
- Exterior mirrors without turn signals
- Battery: fleece battery 12 V / 70 Ah
- Wooden floor (cargo area)
- Hinged lid for storage compartment
- Load securing: Lashing rails on the side wall to the side railing.
- Package: Parking package with 360° camera (Parking Assistant Rear Cross Traffic Alert Drive Away Assist)
- Cross member for trailer hitch (trailer load up to 2 t)
- Wheel arch loadable
- Tires: Continental brand
- Seats: Driver's seat armrest
- Seats: Suspension seat comfort version, driver's seat
- Long-throw nozzles in I-panel

Brief expert findings

Documents submitted	At the time of the inspection, the vehicle registration certificate Part 2 (title) was available, but the vehicle registration certificate Part 1 (document) was not. (Copy)
VIN comparison	The vehicle identification number (VIN) was read from the vehicle and its conformity with the submitted documents was confirmed by the undersigned during the inspection.
Inspection	The inspection conditions were sufficient for the assessment of the vehicle. Lifting equipment and/or a pit were available for examining the vehicle.
Test drive	No test drive/shunting maneuver was carried out during the inspection of the vehicle.
Engine function test	An engine test run was performed.
readiness to drive	The vehicle was roadworthy at the time of inspection.

Value reducing factors

No.	Component group	Description
1	Side panel - rear right side	Interior trim - Scratched - Loss in value
2	Side panel - rear left side	Side panel - dent(s) - Smooth repair work
3	Boot lid / rear door	Rear door - right side - Scratch(es) - Smart repair
4	Sliding door, right	Sliding door - dent(s) - Smart repair

Wear and tear

No.	Component group	Description
1	Vehicle glazing	Windscreen - Stone chips - No deduction
2	Boot lid / rear door	Boot lid - Dent / paintcoat damage - No deduction
3	Trim / covers	Boot lid - interior trim - Scratch(es) - No deduction
4	Interior	Cargo area floor - Scratch(es) - No deduction
5	Wing mirror - left side	Mirror housing - Scratch(es) - No deduction
6	Wing mirror - right side	Mirror housing - Scratch(es) - No deduction
7	Rear bumper	Rear bumper - Scratch(es) - No deduction

The vehicle shows signs of wear and tear commensurate with its age and use.



Missing parts

Description

Equipment - Vehicle key (1 Schlüssel vorhanden)

Paint coat thickness measurement

Roof	115 µm	Roof rail - left side	165 µm
Roof rail - right side	184 µm	Boot lid / rear door	173 µm
Mudguard - left side	202 µm	Mudguard - right side	205 µm
Bonnet	171 µm	Side panel - rear left side	182 µm
Side panel - rear right side	168 µm	Door - rear left side	191 µm
Door - rear right side	178 µm	Door - front left side	210 µm
Door - front right side	189 µm		

Order/Scope of Order

An order was placed to prepare a sales report for the described vehicle. This report includes the following:

- Description of key vehicle information
- Documentation of equipment features
(*Delivery by third-party service providers*)
- Documentation of damage, defects, missing parts
- Documentation of prior damage, unrepaired prior damage, repainting
- A brief visual or functional inspection of the equipment details, if possible.
(*Functional testing of driver assistance systems is not included in the scope of services!*)
- a photographic documentation of the vehicle

Basis for the order

This product is based on the guidelines for vehicle returns and valuations of light commercial vehicles published by Alphabet Fleet Management GmbH. The expert makes the specific findings in each individual case objectively, within the framework of the prescribed standards, based on their own expertise.

The vehicle inspection takes place in a fully assembled, unassembled state.

Damage or defects that can only be detected during disassembly/diagnostic work or through further investigation remain within the realm of prognostic risk. An increased risk exists due to concealed defects caused by fraudulent misrepresentation and which were not identifiable by the expert.

Damage or defects resulting from normal use or wear and tear of the vehicle will be accepted in accordance with the applicable standard.

There was no explicit identification or monetary consideration of the expected features within the product.

Features which, in their nature and extent, slightly exceed normal use but do not constitute unacceptable damage, will be documented and indicated as signs of wear, if applicable.

Damage or defects that, according to the applicable standard, can no longer be attributed to normal use or wear and tear are listed under "Value Reducing Factors" in the product description.

Depending on the product specification, a monetary ID can be provided. If this takes place, the costs can be 100% d or pro rata depending on the vehicle's age and mileage.

Previous damages

No apparent prior damage that had been repaired could be found on the vehicle.



Comments

- Ex STAR CAR Mietfahrzeug.
- Es wurde keine Ausstattungsliste übermittelt.



Figure 1: Diagonal front (left)



Figure 2: Diagonal front (right)



Figure 3: Diagonal rear (left)



Figure 4: Diagonal rear (right)

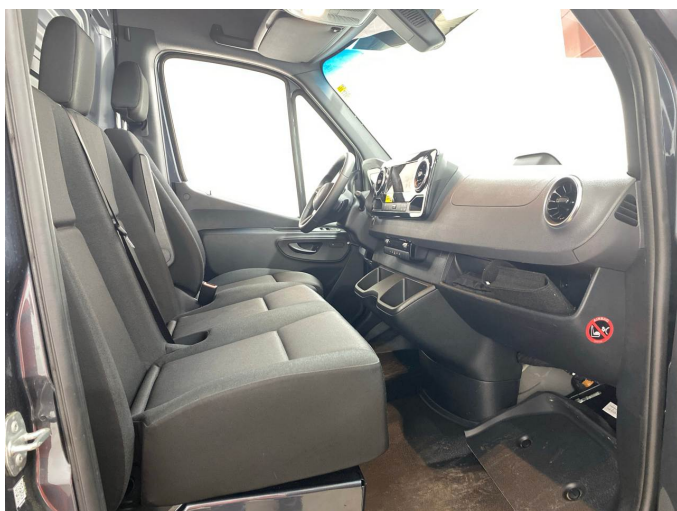


Figure 5: Interior - front



Figure 6: Interior - rear



Figure 7: Instrument cluster



Figure 8: Instrument panel



Figure 9: Interior 360° view



Figure 10: Cargo area



Figure 11: VIN



Figure 12: Mounted tyres



Figure 13: Documents



Figure 14: Misc.



Figure 15: Misc.



Figure 16: Misc.

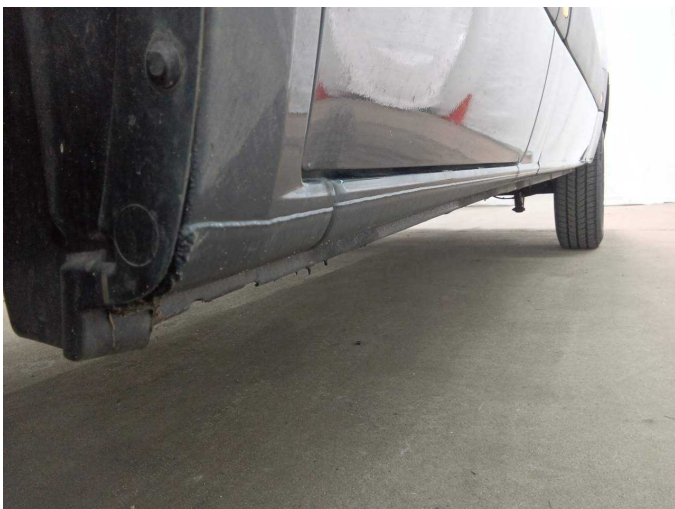


Figure 17: Misc.



Figure 18: Misc.



Figure 19: Misc.



Figure 20: Misc.



Figure 21: Misc.



Figure 22: Misc.



Figure 23: Misc.



Figure 24: Misc.



Figure 25: Misc.



Figure 26: Misc.



Figure 27: Misc.



Figure 28: Misc.

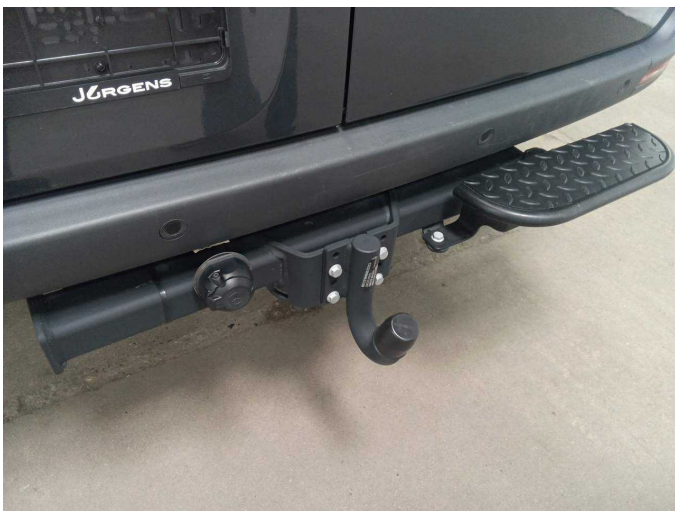


Figure 29: Misc.



Figure 30: Misc.



Figure 31: Misc.



Figure 32: Misc.

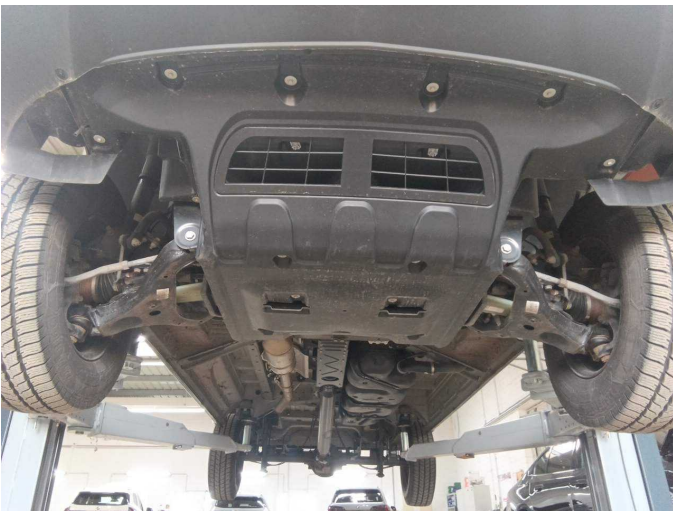


Figure 33: Misc.



Figure 34: Misc.



Damage 1: Side panel - rear right side: Interior trim - Scratched - Loss in value



Damage 1: Side panel - rear right side: Interior trim - Scratched - Loss in value



Damage 2: Side panel - rear left side: Side panel - dent(s) - Smooth repair work



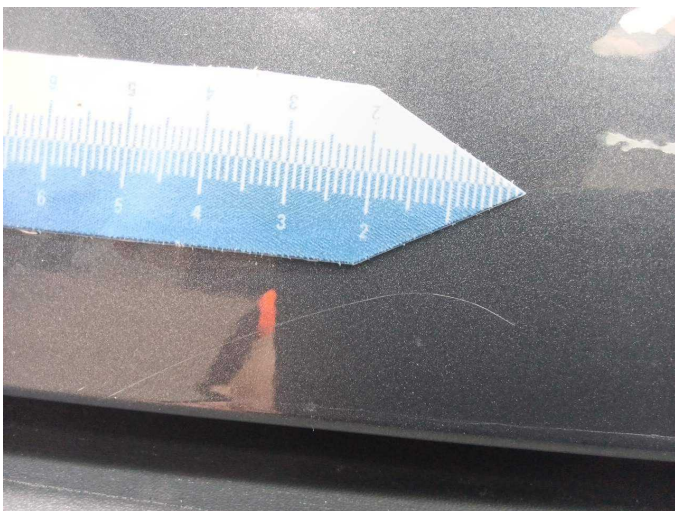
Damage 2: Side panel - rear left side: Side panel - dent(s) - Smooth repair work



Damage 3: Boot lid / rear door: Rear door - right side - Scratch(es) - Smart repair



Damage 3: Boot lid / rear door: Rear door - right side - Scratch(es) - Smart repair



Damage 3: Boot lid / rear door: Rear door - right side - Scratch(es) - Smart repair



Damage 3: Boot lid / rear door: Rear door - right side - Scratch(es) - Smart repair



Damage 3: Boot lid / rear door: Rear door - right side - Scratch(es) - Smart repair



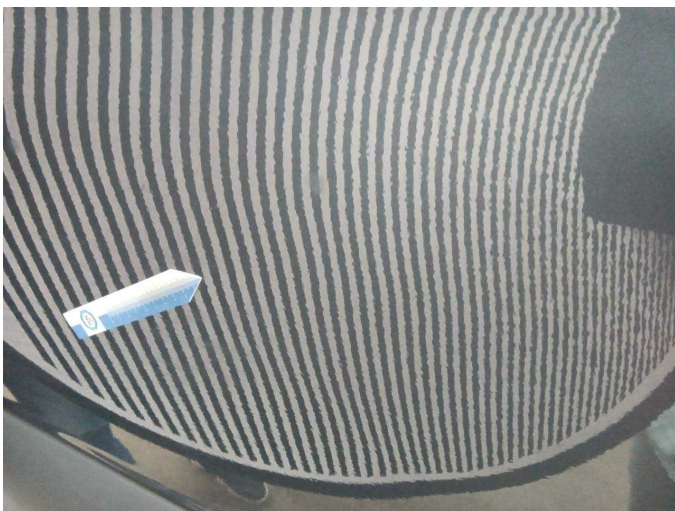
Damage 4: Sliding door, right: Sliding door - dent(s) - Smart repair



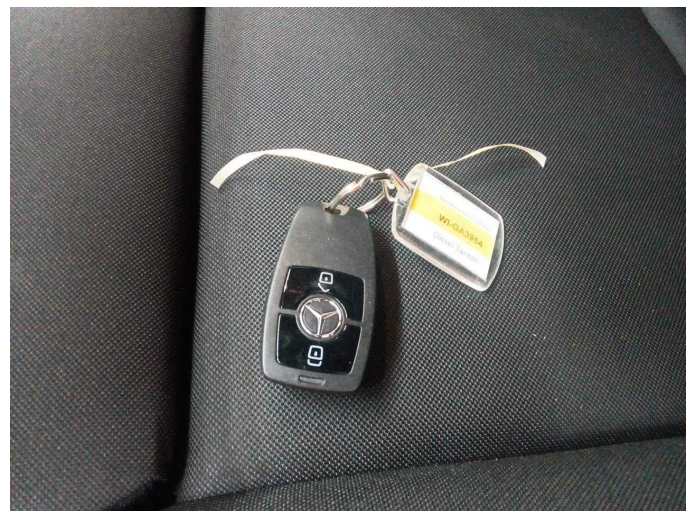
Damage 4: Sliding door, right: Sliding door - dent(s) - Smart repair



Damage 4: Sliding door, right: Sliding door - dent(s) - Smart repair



Damage 4: Sliding door, right: Sliding door - dent(s) - Smart repair



Missing part 1: Equipment: Vehicle key (1 Schlüssel vorhanden) - Missing - Perform