

Expertise

Protocol number: 45487585
Order No. / Reference: 26275917
Inspection date: 15 May 2026

Manufacturer: Skoda

Model: Kodiaq 2.0 TDI 4x4 DSG L&K

VIN: TMBLN7NS0R8502622



Vehicle details

Manufacturer / Type / Model / Equipment

Skoda Kodiaq 2.0 TDI 4x4 DSG L&K

Vehicle Identification number TMBLN7NS0R8502622

Mileage (Read) 160,083 km

First registration 6 Sept 2023

Number of holders 1

Power / Engine displacement 147 kw / 1,968 ccm

Fuel type / Cylinder Diesel / 4

Gearbox / Number of gears Automatic / 7

Type of drive All-wheel drive

Type of vehicle SUV

Colour / colour code Black Magic Perleffekt

Doors / Seats 5 / 5

Upholstery type Leather

Colour of upholstery Black



Vehicle details			
Maintenance booklet / proof	digital proof / complete	Next maintenance in	8,200 km
Last service on / at	09/2025 at 138,195 km		
Key is / should be	2 / 2	FZG documents	ZB#2 (B) was available (copy), ZB#1 (S) was not available.
		Letter No.	GT128237
Previous damage / Accident	Detectable	Repainting	Detectable
Inspection conditions	sufficient	Lifting equipment / pit	yes
Test drive	Not performed	Engine function test	Performed
Manufacturer key number/ type code number	8004 / AVW 00747		
Emission standard	EURO6;WLTP;AP;PI/CI; M, N1 I	fine dust sticker	
Permitted total weight	2,410 kg	Empty weight	

Tyres

Mounted tyres				
#	Tyre size	Type of tyre	Manufacturer	Tread depth
1)	235/55 R18 104H	Winter tyres on Light alloy	Pirelli	4mm / 4mm
2)	235/55 R18 104H	Winter tyres on Light alloy	Pirelli	6mm / 6mm
Additional tyres				
#	Tyre size	Type of tyre	Manufacturer	Tread depth
1)	235/50 R19 99V	Summer tyres on Light alloy	Hankook	4mm / 4mm
2)	235/50 R19 99V	Summer tyres on Light alloy	Hankook	6mm / 6mm
Replacement				
Typ	Tyre size	Type of tyre	Manufacturer	Tread depth
E	145/85 R18 103M	Summer tyres on Steel	Sonstige	3 mm

Legend: Tread depth information for the left tire is listed first, for the right tire it is listed second on the axle in the direction of travel.

TÜV SÜD Auto Partner GmbH
Wiesenring 2
04159 Leipzig

Inspection location
Hartmann Fleet Professionals GmbH
Leerenstraße 25
29683 Bad Fallingbommel



Equipment



Standard equipment

- 12V socket in the center console and in the trunk
- Storage compartments behind the wheel arches in the trunk
- front aero windshield wipers
- Airbag, driver's knee airbag
- Airbag, head airbags
- Allergen filter
- Anti-lock braking system (ABS)
- Dashboard in black / black, door trim in black
- Electrically adjustable and heated exterior mirrors with integrated side indicators
- Hydraulic brake assist (HBA)
- Grey headliner
- Roof rails, anodized (including chrome trim strips on the side windows)
- Digital Cockpit (8")
- Third brake light (in the rear spoiler (LED))
- eCall (automatic emergency call function in case of an accident with airbag deployment)
- Electronic transverse differential lock (XDS+)
- Driving light assistant and rain sensor ((tunnel light, coming and leaving home function))
- High Beam Assist (Light Assist)
- front and rear floor mats
- rear footwell lighting
- Closed storage compartment on the driver's side
- Transmission: 7-speed dual-clutch transmission (DSG)
- Illuminated glove compartment
- Kessy - keyless entry and start-stop system
- Boot cover, roll-up and removable
- Paint finish: Metallic / Pearl effect
- LED matrix headlights and dynamic high beam assist (Light Assist)
- LED taillights in crystal glass look with animated turn signals
- Reading lights at the front of the headliner
- Rear center armrest with cup holders
- Front center armrest, including storage compartment
- Multi-collision brake
- Stainless steel pedal design
- Progressive steering
- Wheel arch cover (front and rear, made of plastic, black textured)
- Radio accessories: CANTON sound system (11 speakers, 1 subwoofer, digital equalizer, 575W)
- Radio accessories: Wireless SmartLink
- Wheels: 18" steel spare wheel, space-saving (tire 145/85 R18 incl. jack, wheel bolt wrench, load floor cover replaces tire mobility kit)
- Heated windshield washer nozzles, front
- Headlights washer / wiper system
- Kodiaq safety belts (Height-adjustable three-point seat belts in the front, with belt tensioners - Three three-point seat belts in the rear - Belt fastening indicator in the front and in the second row of seats)
- Storage compartment on the left wheel arch
- Adaptive Cruise Control (ACC) (control range up to 210 km/h) (replaces cruise control)
- Airbag for driver and front passenger (passenger airbag can be deactivated)
- Airbag, front side airbags
- Permanent all-wheel drive
- Traction control (ASR)
- Electrically folding exterior mirrors including interior and driver's side mirrors with automatic dimming
- Hill start assist
- Care Connect: Proactive services (10-year term) (Remote Access (1-year term))
- Decorative inlay Piano-Black L&K
- Diesel particulate filter
- Tachometer
- Easy Start (start-stop button)
- Electric tailgate operation
- Electronic parking brake including auto-hold function
- ESC Electronic Stability Control
- Electric windows front and rear (including anti-pinch protection and child safety lock)
- Front radar assistant including city emergency braking function with pedestrian detection
- Front footwell lighting
- Cruise control
- Tinted windows
- Isofix anchorage on the outer rear seats including top tether
- Front and rear headrests are height-adjustable.
- LED ambient lighting (decorative strips in the door panels with selectable color climate, LED reading lights in the front, LED lighting for the make-up mirrors in the sun visors)
- Steering wheel: Leather steering wheel with multifunction buttons including paddle shifters (height and reach adjustable)
- Engine drag torque control (MSR)
- Front and rear parking sensors
- Upholstery: Leather interior L&K with ventilated front seats (leather seat surfaces combined with high-quality materials)
- Radio: Bolero infotainment system (Bolero music system - 8" capacitive color display - voice control)
- Radio accessories: Digital radio reception DAB+
- Tire pressure monitoring
- Wheels: 19" Sirius alloy wheels, diamond-cut finish (7Jx19, tires 235/50 R19 99V ET43)
- Rear seat backrest split 60:40, foldable, longitudinally adjustable, backrest angle adjustable
- Electromechanical power steering
- Seats: Adjustable lumbar support in the front seats
- Seats: Electrically adjustable front seats with memory function
- Seats: Height-adjustable front seats



- Seats: Remote release of the rear seat backrests (2nd row) in the boot
- Sun visor on driver and passenger side with illuminated vanity mirror
- Speed limiter
- Lane Assist, Blind Spot Detection and Parking Assist
- Sunset (rear window and rear side windows tinted dark)
- Telephone: Comfort hands-free telephone system including phone box (with inductive charging function (connection via external antenna))
- 360° surround view camera (area view) including reversing camera
- Immobiliser

- Skoda Care Connect (SOS emergency call function (eCall, including automatic activation in the event of an accident with airbag deployment) - Mobility service (connection for rapid assistance in case of breakdown) - Information service (connection to the hotline for all questions regarding vehicle functions) - Free remote vehicle access for one year with access to vehicle data/functions via smartphone, e.g., parking position, activating hazard warning lights, current fuel level, etc.)
- Front door sill trims
- Variable fastening concept in the trunk
- Lashing eyes in the trunk
- Central locking with remote control (two vehicle keys)

Extra equipment

- Swiveling trailer hitch (with electric release, including trailer stabilization)
- Package: Business Columbus (L&K) (Dynamic radio navigation system Columbus - 9.2" capacitive color display - Digital Cockpit Plus (10") - Driver fatigue detection - 230V socket and one USB charging port (Type-C) - Acoustic glazing in the front doors - Luggage net partition - Infotainment Online (3-year subscription))
- Climatronic air conditioning (3-zone) (fully automatic, separately adjustable for driver, front passenger and rear seats, including humidity sensor and odor and allergen filter)
- Seats: Heated front and outer rear seats

Brief expert findings

Documents submitted	At the time of the inspection, the vehicle registration certificate Part 2 (title) was available, but the vehicle registration certificate Part 1 (document) was not. (Copy)
VIN comparison	The vehicle identification number (VIN) was read from the vehicle and its conformity with the submitted documents was confirmed by the undersigned during the inspection.
Inspection	The inspection conditions were sufficient for the assessment of the vehicle. Lifting equipment and/or a pit were available for examining the vehicle.
Test drive	No test drive/shunting maneuver was carried out during the inspection of the vehicle.
Engine function test	An engine test run was performed.

Value reducing factors

No.	Component group	Description
1	Documents	Service book (30000er, 60000er, 90000er & 120000er Insp überzogen) - Incomplete
2	2nd wheel set	1 tyre - Porous / cracked - Replace
3	Vehicle glazing	Door glass - front left side - Broken / torn - Replace
4	Boot lid / rear door	Boot lid - Corrosion - Paint
5	Rear bumper	Rear bumper - Scratch(es) - Paint
6	Bonnet	Bonnet - Dent / paintcoat damage - Paint
7	Door - rear left side	Door - Dent / paintcoat damage - Repair and paint
8	Side panel - rear right side	Side panel - Dent / paintcoat damage - Repair and paint
9	Front bumper	Front bumper - Scratch(es) - Paint



Wear and tear

No.	Component group	Description
1	2nd wheel set	2nd wheel set - Soiled - No deduction
2	Door - front right side	Door - dent(s) - No deduction
3	Door - rear right side	Door - Dent / paintcoat damage - No deduction
4	Roof	Roof - dent(s) - No deduction
5	Side panel - rear left side	Side panel - Scratch(es) - No deduction
6	Door - front left side	Door (Vogeldreck) - Soiled - No deduction
7	Vehicle glazing	Windscreen - Stone chips - No deduction
8	Side panel - rear left side	Sill - Dent / paintcoat damage - No deduction
9	Wheel / tyres	Tyre - front - Does not meet the leasing specifications - No deduction

The vehicle shows signs of wear and tear commensurate with its age and use.

Missing parts

Description

Documents - Service book (Digitaler Ausdruck)

Previous damages

No.	Previous damage	Extent of damage (Net)
1	Side right, Provided by user / customer, from 30 Aug 2024	726,08 €

Accident damages

No. Accident

1 Side - left

Repainting

No. Repainting

1 Door - rear right side, Professionally carried out, Invoice of repair done Non-existent

Paint coat thickness measurement

Door - rear right side 224 µm |

Order/Scope of Order

An order was placed to prepare a sales report for the described vehicle. This report includes the following:

- Description of key vehicle information
- Documentation of equipment features
(*Delivery by third-party service providers*)
- Documentation of damage, defects, missing parts
- Documentation of prior damage, unrepaired prior damage, repainting
- A brief visual or functional inspection of the equipment details, if possible.
(*Functional testing of driver assistance systems is not included in the scope of services!*)
- a photographic documentation of the vehicle



Basis for the order

This product is based on the guidelines for vehicle returns and valuations published by Alphabet Fleet GmbH. The expert makes the specific findings in each individual case objectively, within the framework of the prescribed standards, based on their own expertise.

The vehicle inspection takes place in a fully assembled, unassembled state.

Damage or defects that can only be detected during disassembly/diagnostic work or through further investigation remain within the realm of prognostic risk. An increased risk exists due to concealed defects caused by fraudulent misrepresentation and which were not identifiable by the expert.

Damage or defects resulting from normal use or wear and tear of the vehicle will be accepted in accordance with the applicable standard.

There was no explicit identification or monetary consideration of the expected features within the product.

Features which, in their nature and extent, slightly exceed normal use but do not constitute unacceptable damage, will be documented and indicated as signs of wear, if applicable.

Damage or defects that, according to the applicable standard, can no longer be attributed to normal use or wear and tear are listed under "Value Reducing Factors" in the product description.

Depending on the product specification, a monetary ID can be provided. If this takes place, the costs can be 100% d or pro rata depending on the vehicle's age and mileage.

Previous damages

Non-repaired previous damages were found at the vehicle. The necessary repair costs are listed in the expert report or if necessary, are listed in detail in a separately enclosed repair cost calculation.

Comments

-Der montierte Winterradsatz ist kein Bestandteil des Auslieferungsumfangs.



Figure 1: Diagonal front (left)



Figure 2: Diagonal front (right)



Figure 3: Diagonal rear (left)



Figure 4: Diagonal rear (right)

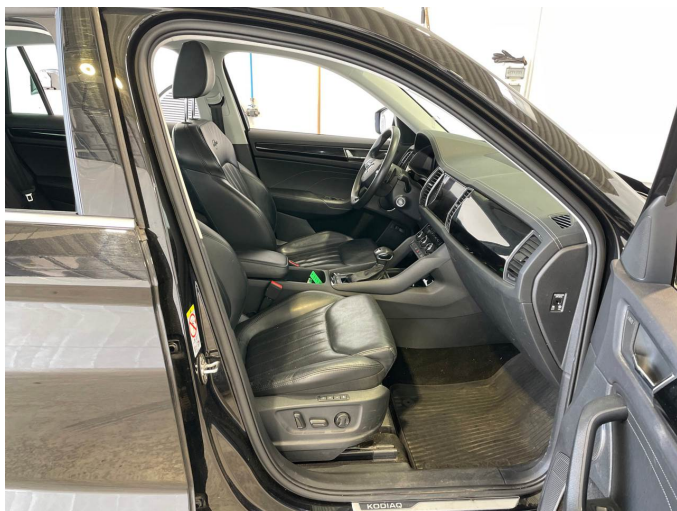


Figure 5: Interior - front



Figure 6: Interior - rear



Figure 7: Instrument cluster



Figure 8: Instrument panel



Figure 9: Interior 360° view



Figure 10: Cargo area

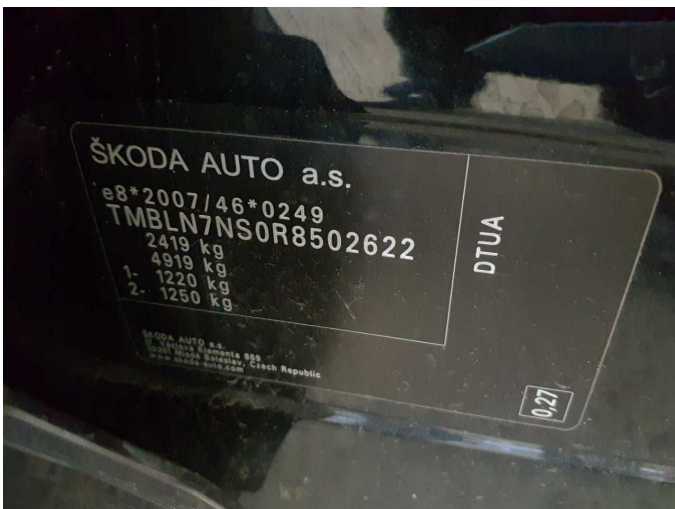


Figure 11: VIN



Figure 12: Mounted tyres



Figure 13: Documents



Figure 14: Additional tyres

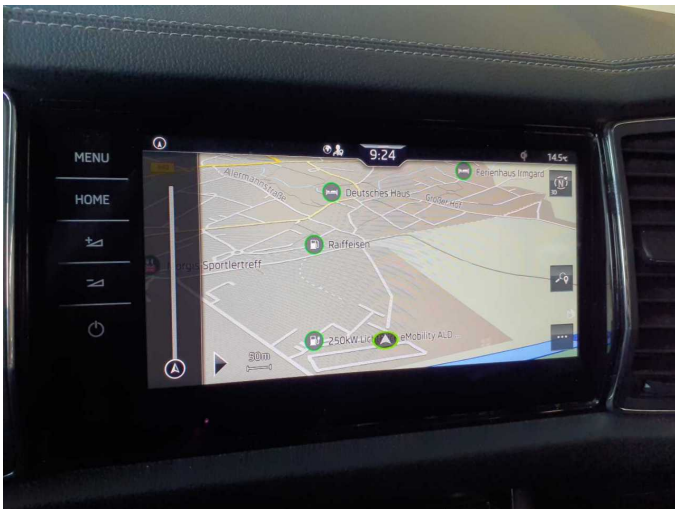


Figure 15: Navigation



Figure 16: Misc.



Figure 17: Misc.

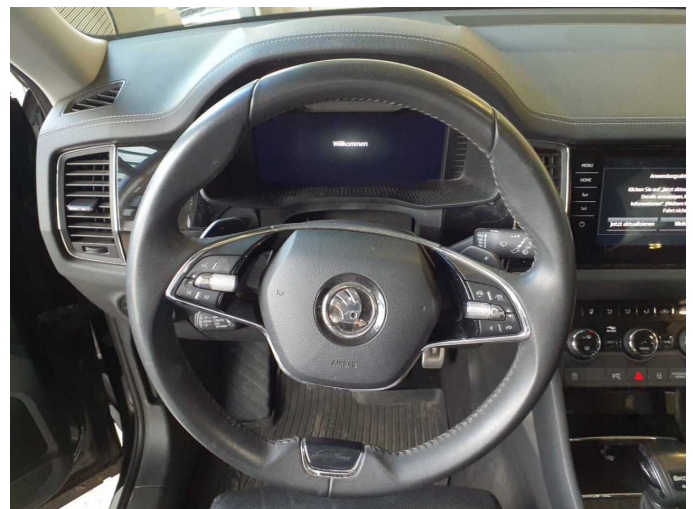


Figure 18: Misc.



Figure 19: Misc.



Figure 20: Misc.



Figure 21: Misc.



Figure 22: Misc.



Figure 23: Misc.



Figure 24: Misc.



Figure 25: Misc.



Figure 26: Misc.



Figure 27: Misc.



Figure 28: Misc.



Figure 29: Misc.



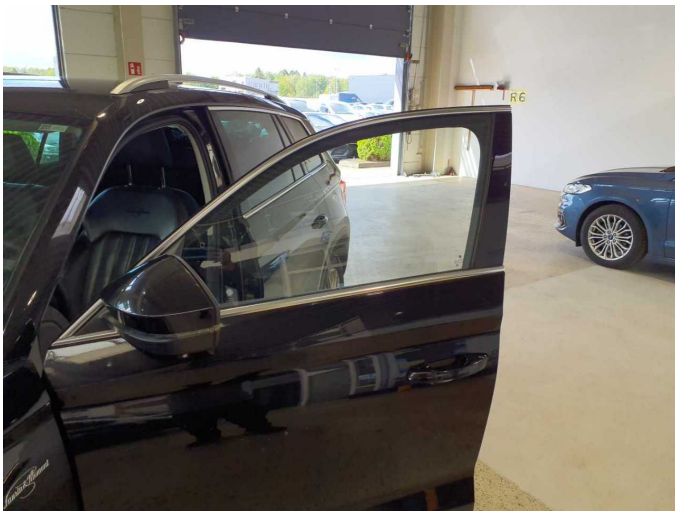
Figure 30: Misc.



Damage 2: 2nd wheel set: 1 tyre - Porous / cracked - Replace



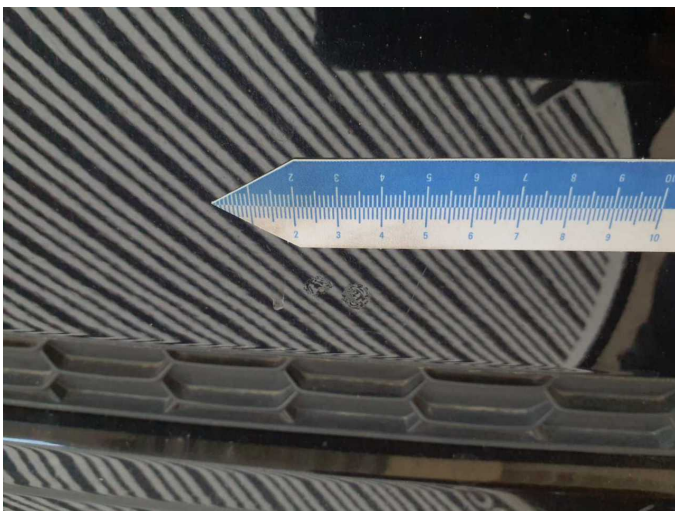
Damage 2: 2nd wheel set: 1 tyre - Porous / cracked - Replace



Damage 3: Vehicle glazing: Door glass - front left side - Broken / torn - Replace



Damage 3: Vehicle glazing: Door glass - front left side - Broken / torn - Replace



Damage 4: Boot lid / rear door: Boot lid - Corrosion - Paint



Damage 4: Boot lid / rear door: Boot lid - Corrosion - Paint



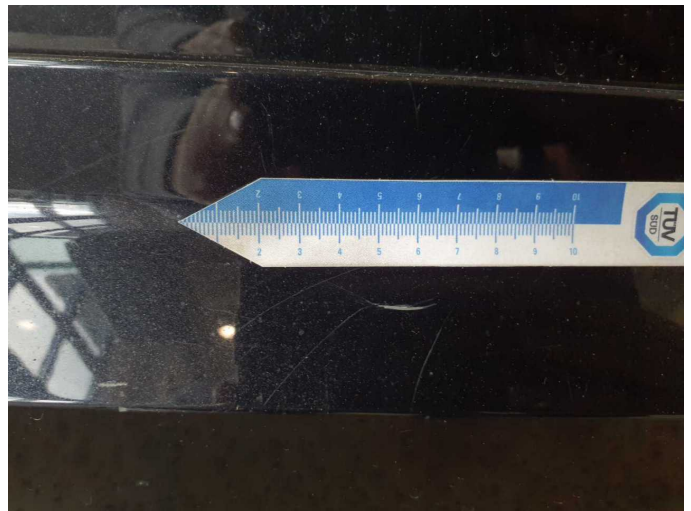
Damage 5: Rear bumper: Rear bumper - Scratch(es) - Paint



Damage 5: Rear bumper: Rear bumper - Scratch(es) - Paint



Damage 5: Rear bumper: Rear bumper - Scratch(es) - Paint



Damage 5: Rear bumper: Rear bumper - Scratch(es) - Paint



Damage 5: Rear bumper: Rear bumper - Scratch(es) - Paint



Damage 5: Rear bumper: Rear bumper - Scratch(es) - Paint



Damage 6: Bonnet: Bonnet - Dent / paintcoat damage - Paint



Damage 6: Bonnet: Bonnet - Dent / paintcoat damage - Paint



Damage 6: Bonnet: Bonnet - Dent / paintcoat damage - Paint



Damage 6: Bonnet: Bonnet - Dent / paintcoat damage - Paint



Damage 7: Door - rear left side: Door - Dent / paintcoat damage - Repair and paint



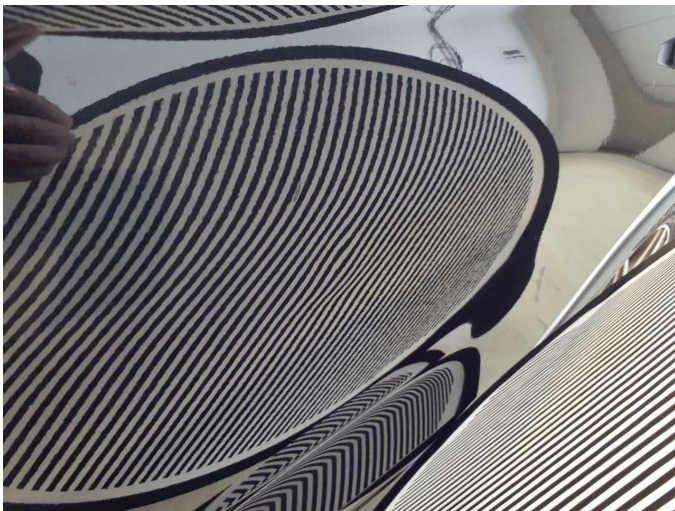
Damage 7: Door - rear left side: Door - Dent / paintcoat damage - Repair and paint



Damage 7: Door - rear left side: Door - Dent / paintcoat damage - Repair and paint



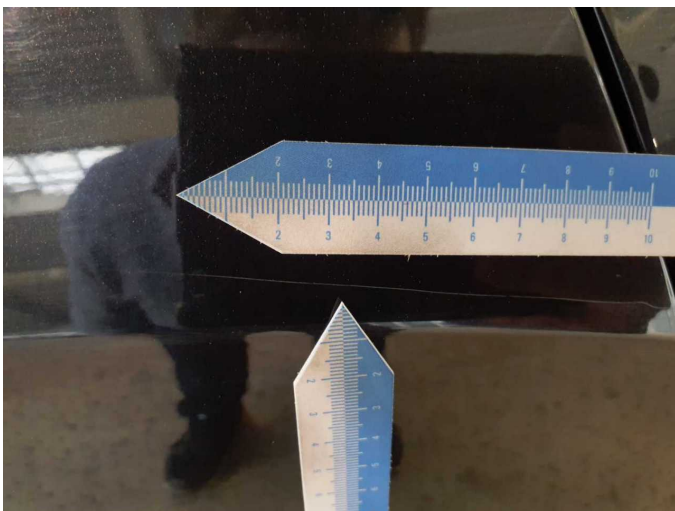
Damage 7: Door - rear left side: Door - Dent / paintcoat damage - Repair and paint



Damage 7: Door - rear left side: Door - Dent / paintcoat damage - Repair and paint



Damage 8: Side panel - rear right side: Side panel - Dent / paintcoat damage - Repair and paint



Damage 8: Side panel - rear right side: Side panel - Dent / paintcoat damage - Repair and paint



Damage 8: Side panel - rear right side: Side panel - Dent / paintcoat damage - Repair and paint



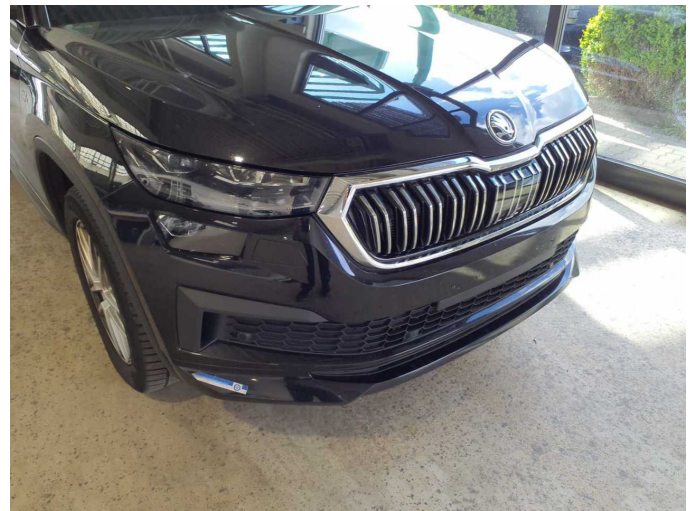
Damage 8: Side panel - rear right side: Side panel - Dent / paintcoat damage - Repair and paint



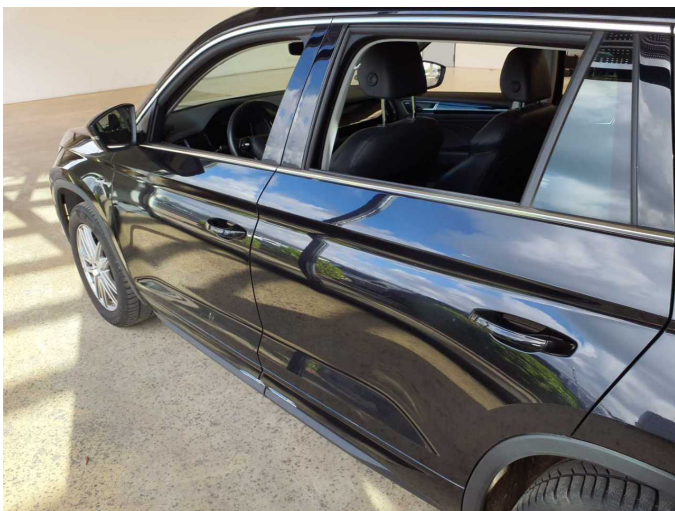
Damage 8: Side panel - rear right side: Side panel - Dent / paintcoat damage - Repair and paint



Damage 9: Front bumper: Front bumper - Scratch(es) - Paint



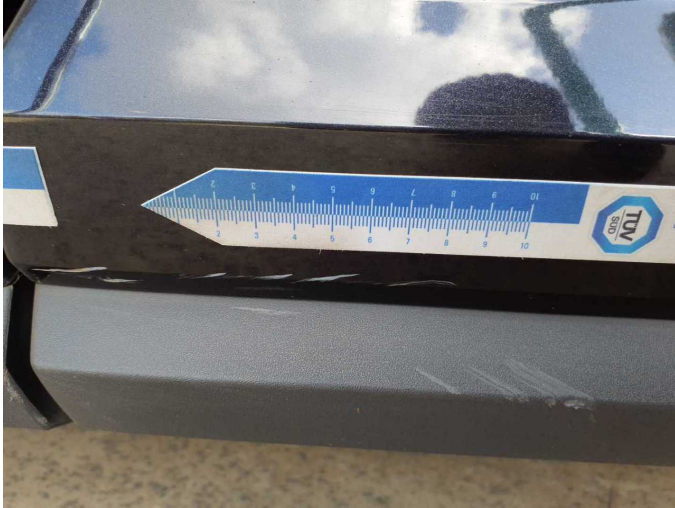
Damage 9: Front bumper: Front bumper - Scratch(es) - Paint



Accident 1: Side - left



Accident 1: Side - left



Accident 1: Side - left



Accident 1: Side - left



Repainting 1: Door - rear right side



Repainting 1: Door - rear right side



Wartungshistorie

(gemäß Auftraggeber Informationen)

Fahrgestellnummer: TMBLN7NS0R8502622
Hersteller / Modell: SKODA SKODA Kodiaq 2.0 TDI 4x4 DSG L&K

Datum	KM-Stand	Beschreibung
22.09.2025	138.195	Bremse Sonstiges; Bremsflüssigkeit; Bremsflüssigkeit ern; Bremsklötze hinten; Bremsklötze vorne; Bremsscheiben hinten; Bremsscheiben vorne; Getriebeöl ern/prüfen; Motoröl b. Wartung; Ölfilter ern; Ölwechsel - Hinterachse; Regelwartungsdienst; Reparatur Sonstiges; Wartung Sonstiges
04.03.2025	99.179	Kraftstofffilter ern; Luftfiltereinsatz ern; Motoröl b. Wartung; Ölfilter ern; Regelwartungsdienst; Systemtest/Eigendiagnose; Wartung Sonstiges
05.09.2024	67.643	Bremse Sonstiges; Bremsklötze hinten; Bremsklötze vorne; Bremsscheiben hinten; Bremsscheiben vorne; Motoröl b. Wartung; Ölfilter ern; Regelwartungsdienst; Wartung Sonstiges
23.02.2024	31.113	Motoröl b. Wartung; Ölfilter ern; Regelwartungsdienst; Wartung Sonstiges