

Expertise

Protocol number: 46238684
Order No. / Reference: 26577926
Inspection date: 29 Jun 2026

Manufacturer: Volkswagen

Model: Passat Variant 1.4 TSI Plug-In-Hybrid DSG GTE

VIN: WVVZZZ3CZPE009624



Vehicle details

Manufacturer / Type / Model / Equipment

Volkswagen Passat Variant 1.4 TSI Plug-In-Hybrid DSG GTE

Vehicle Identification number WVVZZZ3CZPE009624

Mileage (Read) 95,769 km

First registration 4 Oct 2022

Number of holders 1

Next periodical technical inspection 10/2025

Power / Engine displacement 115 kw / 1,395 ccm

Fuel type / Cylinder Hybr.B/E ext.auf / 4

Gearbox / Number of gears Automatic / 6

Type of drive Front drive

Type of vehicle Station wagon

Colour / colour code Mondsteingrau

Doors / Seats 5 / 5

Upholstery type Cloth

Colour of upholstery Grey-Black

readiness to drive Roadworthy



Vehicle details			
Maintenance booklet / proof	digital proof / complete	Next maintenance in	8,900 km
Last service on / at	03/2026 at 89,652 km		
Key is / should be	2 / 2	FZG documents	ZB#2 (B) was available (copy), ZB#1 (S) was not available.
		Letter No.	GM698919
Previous damage / Accident	Detectable	Repainting	None detectable
Inspection conditions	sufficient	Lifting equipment / pit	No
Test drive	Not performed	Engine function test	Performed
readiness to drive	Roadworthy		
Manufacturer key number/ type code number	0603 / BRZ 00125		
Emission standard	EURO6;WLTP;AP;PI/CI; M, N1 I	fine dust sticker	
Permitted total weight	2,270 kg	Empty weight	

Tyres

Mounted tyres				
#	Tyre size	Type of tyre	Manufacturer	Tread depth
1)	215/55 R17 94H	Winter tires (with run-flat tires) on Light alloy	Continental	3mm / 3mm
2)	215/55 R17 94H	Winter tires (with run-flat tires) on Light alloy	Continental	6mm / 6mm
Additional tyres				
#	Tyre size	Type of tyre	Manufacturer	Tread depth
1)	215/55 R17 94V	Summer tires (with run-flat tires) on Light alloy	Continental	4mm / 4mm
2)	215/55 R17 94V	Summer tires (with run-flat tires) on Light alloy	Continental	6mm / 5mm

Legend: Tread depth information for the left tire is listed first, for the right tire it is listed second on the axle in the direction of travel.

TÜV SÜD Auto Partner GmbH
Wiesenring 2
04159 Leipzig

Inspection location
Hartmann Fleet Professionals GmbH
Leerenstraße 25
29683 Bad Fallingbommel



Equipment



Standard equipment

- Airbag for driver and front passenger (airbag deactivation switch on the passenger side)
- Anti-lock braking system (ABS)
- Adaptive Cruise Control (ACC) "stop & go", including speed limiter
- Electrically adjustable and heated exterior mirrors, ambient lighting (automatically dimming on the driver's side)
- Chrome trim on the side windows
- black roof rails
- e-Sound (artificially generated engine noise to inform other road users about the approach of the e-vehicle)
- Entry/warning lights in LED technology in the front doors
- Automatic headlight control (with daytime running lights, "Leaving home" function and manual "Coming home" function)
- Pedestrian detection
- Transmission: 6-speed DSG (6-speed dual-clutch transmission DSG)
- Interior mirror automatically dimming
- Cable for AC charging station (incl. standard mains charging cable for household socket)
- Rear headrests (3)
- Front headrests (safety-optimized, longitudinally and height-adjustable)
- LED headlights with daytime running lights
- Headlight range control
- Front center armrest, height and length adjustable, with storage box (2 rear air vents with chrome slats)
- Fatigue detection (detects signs of possible driver fatigue based on characteristic steering behavior, time of day and driving duration and issues a visual and audible warning)
- Navigation system "Discover Media" incl. "Streaming & Internet" (4x20 watts, user interface with proximity sensor, dual tuner with phase diversity, vehicle menu, speed, volume adjustment, map, 2D display, tone control, 3-way TFT display with touchscreen operation, navigation "Discover Media" incl. "Streaming & Internet", MP3 radio, telephone contact addresses for navigation, telephone interface, 2 USB ports also for iPod/iPhone, traffic sign recognition "VW Media Control", We Connect Plus, 3 years, incl. We Connect route guidance, dynamic RDS, TMC tuner)
- Package: Light and Sight Package "Plus" (LED lights in the front footwell - Electrically adjustable and heated exterior mirrors, automatically dimming on the driver's side - Entry/warning lights in the front doors, in LED technology - Automatic headlight control, with daytime running lights, "Leaving Home" function and manual "Coming Home" function - Interior light with delayed shut-off and dimming function, 2 LED reading lights each in the front and rear - Automatically dimming interior mirror - Illuminated vanity mirrors - Extendable sun visors - Rain sensor)
- Tire pressure monitoring system (passive)
- Wheels: 4 "Montpellier" 7 J x 17 alloy wheels in black, polished surface (low rolling resistance - AirStop tires 215/55 R 17 - wheel locks with enhanced theft protection)
- Airbag, head airbag system for front and rear passengers (including front side airbags)
- App-Connect Wireless (Volkswagen offers three interfaces for connecting smartphones with numerous possibilities: - Apple CarPlay - Android Auto from Google - MirrorLink)
- Cup holders (2) front
- Hill start assist
- third brake light
- Headliner in Mistral Grey
- Tachometer
- Parking aid - warning signals for obstacles in the front and rear area
- Electronic parking brake including auto-hold function
- Remote release for luggage compartment lid
- Windscreen made of laminated safety glass, heat and sound insulating
- Adjustable luggage compartment floor
- Interior lights with delayed shut-off and dimming function (2 LED reading lights each at the front and rear)
- ISOFIX mounting points (for attaching 2 child seats to the rear seats, also for i-Size child seats)
- Air conditioning system "Air Care Climatronic" with 3-zone temperature control and active combination filter
- Paint finish: Solid
- LED taillights
- Steering wheel: Multifunction sports steering wheel in leather, with paddle shifters (gearshift knob in leather)
- Multifunction display "Premium" with multi-color display (showing, among other things: - Outside temperature - Average consumption - Average speed - Trip distance - Trip time - Gear recommendation - Speed warning - Comfort - Current consumption - Range - Service - Time with extended display options, e.g.: - Digital speedometer - Digital oil temperature display - Lights & visibility - Language - Auxiliary heater - Winter tires)
- Mains charging cable for household socket
- Mesh partition
- Non-smoking version (storage compartment and 12V socket at the front)
- Emergency braking assistant "Front Assist" (for automatic distance control ACC up to 210 km/h)
- Emergency call service (no registration required, service is activated upon delivery)
- Upholstery: Fabric "Business" (seat center panels of the front seats and the outer rear seats in fabric "Weave")
- Proactive occupant protection system in conjunction with "Front Assist" (detects critical traffic situations with increased accident potential - prepares vehicle occupants and the vehicle for a possible accident by tightening the front, fastened seat belts and securing the driver and front passenger, and closing open windows and the sunroof except for a gap)



- Rear bench seat undivided, backrest asymmetrically split and foldable, with center armrest (and pass-through option)
- Seat belts: Three-point automatic seat belt (seat belt for middle rear seat - seat belts for outer rear seats - front seat belts with height adjustment and belt tensioner)
- Seats: Front seats height-adjustable (ergoComfort seat on the driver's side - with electric backrest adjustment)
- Start-stop system (with brake energy recuperation)
- Bumpers in body color
- Telephone interface
- First aid kit, warning triangle and high-visibility vest
- Electronic immobilizer

Extra equipment

- Anti-theft alarm system (interior monitoring, backup horn and tow-away protection - illuminated make-up mirror in the sun visors, extendable sun visors)
- Package: "Business Premium" package incl. navigation (from Business trim level) (2 USB-C ports in the front, USB-C charging socket in the rear, 230V socket, App-Connect incl. wireless, Apple CarPlay, Android Auto, "Travel Assist" driver assistance system and "Lane Assist" lane keeping assist system, Air Care Climatronic with 3-zone temperature control, active combination filter and rear controls, lumbar support in the front, electric on the driver's side, massage function on the driver's side, "Rear View" reversing camera, heated windshield washer nozzles, Comfort telephone interface, inductive charging function, heated front seats)
- Surround view "Area View" including reversing camera "Rear View" (displays the vehicle's surroundings in real time on the radio/navigation system display - assists when exiting blind driveways or side streets, when parking in and out of parking spaces, when maneuvering with a trailer or when driving off-road)

- Radio accessories: Digital radio reception DAB+ (reception of digitally broadcast radio stations and traffic information in addition to the analog station offering - reception depends on the local availability of digital networks - expanded range of radio programs - improved reception performance)
- Keyless start system without safe locking
- Power steering (electromechanical, speed-dependent)
- Seats: Comfort seats in the front
- Seats: Lumbar support in the front (driver's side electrically adjustable)
- Lane Assist (warns with a corrective steering intervention if the vehicle unintentionally leaves the lane)
- 12V power outlet on the rear center console (and in the luggage compartment)
- Textile floor mats (front and rear)
- Warning tone and light for unfastened seat belts front and rear

- Exterior mirrors with ambient lighting and passenger-side mirror lowering function (foldable and heated - dimming on the driver's side)
- Navigation system "Discover Pro" incl. "Streaming & Internet" (4x20 Watt App-Con. Wireless Digital Cockpit. Operation with proximity sensor. Dual tuner with phase differentiation. DAB. Vehicle menu. Speed. Volume adjustment. Gestures. 32 GB SSD hard drive. Map 2D display. Tone control. 3-way TFT display with touchscreen. MP3. Navigation for Europe. Voice control. Telephone contact. Address. Telephone interface. "Comfort" with inductive charging. 2 USB iPod/iPhone. Traffic sign recognition. "We Connect Plus" incl. "We Connect". Dynamic route guidance. RDS. TMC tuner. Mobile key pre-activation, vehicle via smartphone.)
- Towbar, foldable (with electric release)
- Wheels: Tire pressure monitoring system for road tires (road tires with sensors for the tire pressure monitoring system)

Brief expert findings

Documents submitted	At the time of the inspection, the vehicle registration certificate Part 2 (title) was available, but the vehicle registration certificate Part 1 (document) was not. (Copy)
VIN comparison	The vehicle identification number (VIN) was read from the vehicle and its conformity with the submitted documents was confirmed by the undersigned during the inspection.
Inspection	The inspection conditions were sufficient for the assessment of the vehicle. No lifting equipment or pit was available for inspecting the vehicle. Therefore, inspection of the vehicle's underside was only possible to a limited extent.
Test drive	No test drive/shunting maneuver was carried out during the inspection of the vehicle.
Engine function test	An engine test run was performed.
readiness to drive	The vehicle was roadworthy at the time of inspection.



Value reducing factors

No.	Component group	Description
1	Misc.	Main inspection - No evidence - No deduction
2	2nd wheel set	1 alloy rim - Scratch(es) - Loss in value
3	Bonnet	Bonnet - dent(s) - Smooth repair work
4	2nd wheel set	1 alloy rim - Scratch(es) - Loss in value
5	Boot lid / rear door	Boot lid - dent(s) - Smooth repair work
6	Boot lid / rear door	Trim - standard - lower (Abdeckkappe re.) - Deformed - Replace
7	Rear bumper	Rear bumper - Scratch(es) - Paint
8	Side panel - rear right side	Side panel - Dent / paintcoat damage - Repair and paint

Wear and tear

No.	Component group	Description
1	Wheel / tyres	Alloy rim - front right side - Scratch(es) - No deduction
2	Wheel / tyres	Alloy rim - rear right side - Scratch(es) - No deduction
3	Side panel - rear left side	Side panel - Scratch(es) - No deduction
4	Vehicle glazing	Windscreen - Stone chips - No deduction

The vehicle shows signs of wear and tear commensurate with its age and use.

Previous damages

No.	Previous damage	Extent of damage (Net)
1	Front, Provided by user / customer, from 24 Apr 2026	3.264,74 €

Order/Scope of Order

An order was placed to prepare a sales report for the described vehicle. This report includes the following:

- Description of key vehicle information
- Documentation of equipment features
(*Delivery by third-party service providers*)
- Documentation of damage, defects, missing parts
- Documentation of prior damage, unrepaired prior damage, repainting
- A brief visual or functional inspection of the equipment details, if possible.
(*Functional testing of driver assistance systems is not included in the scope of services!*)
- a photographic documentation of the vehicle



Basis for the order

This product is based on the guidelines for vehicle returns and valuations published by Alphabet Fleet GmbH. The expert makes the specific findings in each individual case objectively, within the framework of the prescribed standards, based on their own expertise.

The vehicle inspection takes place in a fully assembled, unassembled state.

Damage or defects that can only be detected during disassembly/diagnostic work or through further investigation remain within the realm of prognostic risk. An increased risk exists due to concealed defects caused by fraudulent misrepresentation and which were not identifiable by the expert.

Damage or defects resulting from normal use or wear and tear of the vehicle will be accepted in accordance with the applicable standard.

There was no explicit identification or monetary consideration of the expected features within the product.

Features which, in their nature and extent, slightly exceed normal use but do not constitute unacceptable damage, will be documented and indicated as signs of wear, if applicable.

Damage or defects that, according to the applicable standard, can no longer be attributed to normal use or wear and tear are listed under "Value Reducing Factors" in the product description.

Depending on the product specification, a monetary ID can be provided. If this takes place, the costs can be 100% d or pro rata depending on the vehicle's age and mileage.

Previous damages

According to available information previous damages were repaired at the vehicle. Traces of repairs, which allow conclusions about the area of repair, were not recognizable during the inspection.



Figure 1: Diagonal front (left)



Figure 2: Diagonal front (right)



Figure 3: Diagonal rear (left)



Figure 4: Diagonal rear (right)



Figure 5: Interior - front



Figure 6: Interior - rear



Figure 7: Instrument cluster



Figure 8: Instrument panel



Figure 9: Interior 360° view



Figure 10: Cargo area

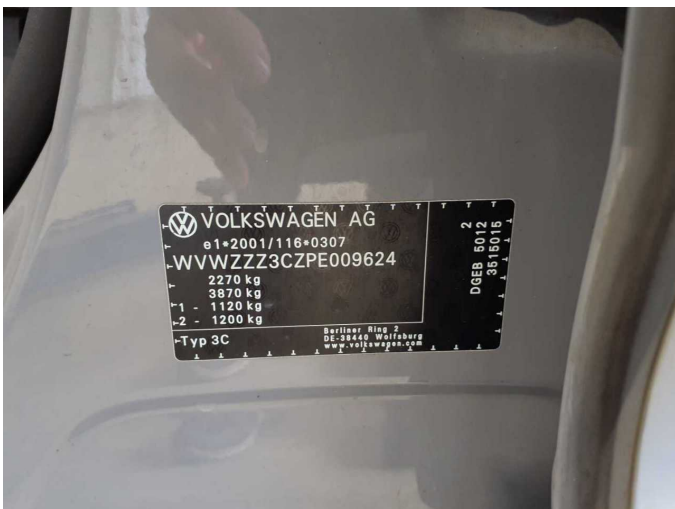


Figure 11: VIN



Figure 12: Mounted tyres



Figure 25: Misc.



Figure 26: Misc.



Figure 27: Misc.



Figure 28: Misc.



Figure 29: Misc.



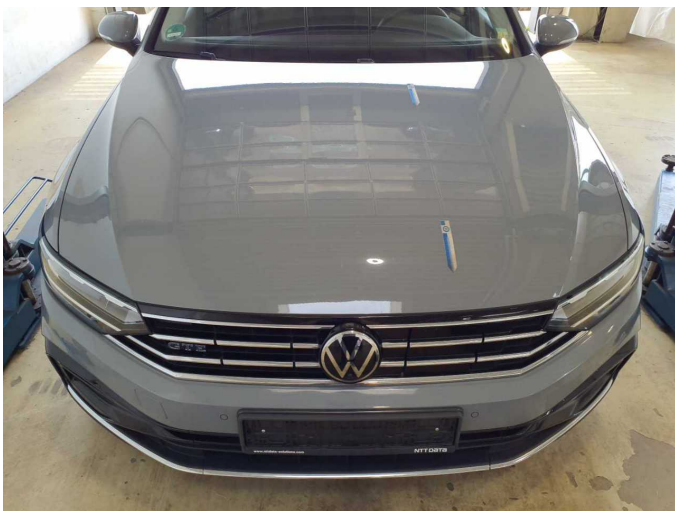
Figure 30: Misc.



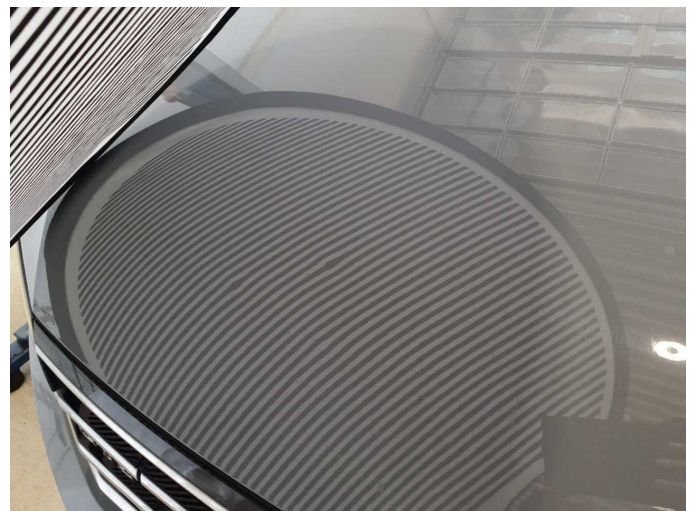
Damage 2: 2nd wheel set: 1 alloy rim - Scratch(es) - Loss in value



Damage 2: 2nd wheel set: 1 alloy rim - Scratch(es) - Loss in value



Damage 3: Bonnet: Bonnet - dent(s) - Smooth repair work



Damage 3: Bonnet: Bonnet - dent(s) - Smooth repair work



Damage 3: Bonnet: Bonnet - dent(s) - Smooth repair work



Damage 3: Bonnet: Bonnet - dent(s) - Smooth repair work



Damage 4: 2nd wheel set: 1 alloy rim - Scratch(es) - Loss in value



Damage 4: 2nd wheel set: 1 alloy rim - Scratch(es) - Loss in value



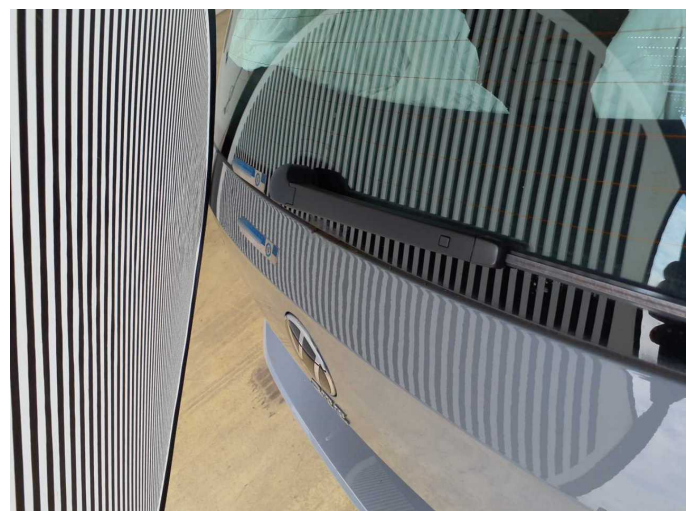
Damage 5: Boot lid / rear door: Boot lid - dent(s) - Smooth repair work



Damage 5: Boot lid / rear door: Boot lid - dent(s) - Smooth repair work



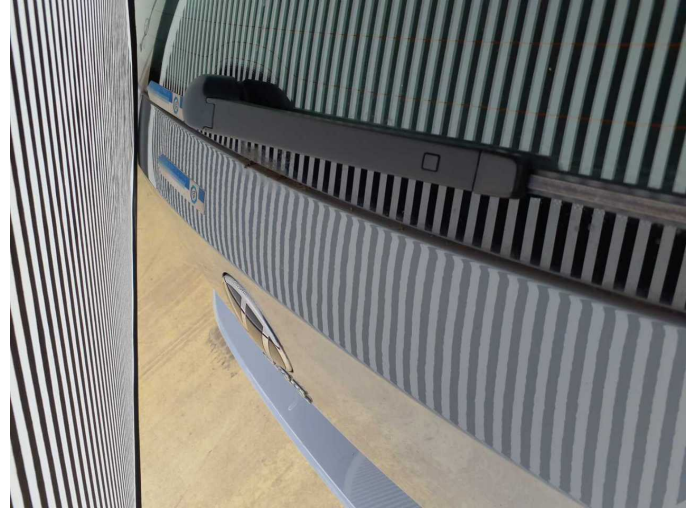
Damage 5: Boot lid / rear door: Boot lid - dent(s) - Smooth repair work



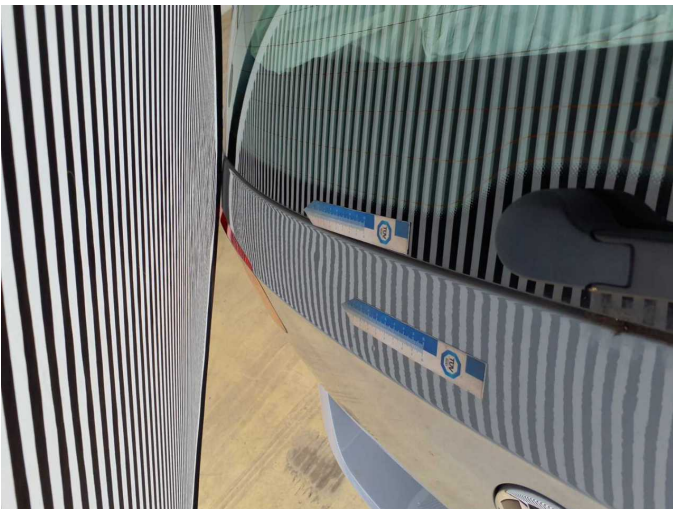
Damage 5: Boot lid / rear door: Boot lid - dent(s) - Smooth repair work



Damage 5: Boot lid / rear door: Boot lid - dent(s) - Smooth repair work



Damage 5: Boot lid / rear door: Boot lid - dent(s) - Smooth repair work



Damage 5: Boot lid / rear door: Boot lid - dent(s) - Smooth repair work



Damage 6: Boot lid / rear door: Trim - standard - lower (Abdeckkappe re.)
- Deformed - Replace



Damage 6: Boot lid / rear door: Trim - standard - lower (Abdeckkappe re.)
- Deformed - Replace



Damage 7: Rear bumper: Rear bumper - Scratch(es) - Paint



Damage 7: Rear bumper: Rear bumper - Scratch(es) - Paint



Damage 7: Rear bumper: Rear bumper - Scratch(es) - Paint



Damage 8: Side panel - rear right side: Side panel - Dent / paintcoat damage - Repair and paint



Damage 8: Side panel - rear right side: Side panel - Dent / paintcoat damage - Repair and paint



Damage 8: Side panel - rear right side: Side panel - Dent / paintcoat damage - Repair and paint



Damage 8: Side panel - rear right side: Side panel - Dent / paintcoat damage - Repair and paint



Damage 8: Side panel - rear right side: Side panel - Dent / paintcoat damage - Repair and paint



Damage 8: Side panel - rear right side: Side panel - Dent / paintcoat damage - Repair and paint